

# Complex Health Needs Newsletter Jan 2012

[www.rbkc.gov.uk/healthandsocialcare](http://www.rbkc.gov.uk/healthandsocialcare)



**Richard Holden**

*Head of Complex Health  
Needs and Disabilities*

In the back of this newsletter there is a section of data collected for the last financial year. The fact that it has taken this long to get this information out reflects the number of changes affecting the Council at the moment as the people preparing this information got diverted elsewhere.

As we enter 2012, I'm reflecting back on 2011 which was a busy year. Despite considerable financial constraints impacting on the Council we have, I believe, successfully been able to maintain our levels of service to disabled children and in some areas extend what we have been doing.

In order to achieve this we did have a plan and we have been carrying it out. Basically the plan has been to expand the range and effectiveness of day services in order to reduce demand for overnight services, and to reduce bureaucracy and make the very best use of our staff.

## So what have we done?

### Reducing Bureaucracy

- At the beginning of the year we simplified the process for getting a care package agreed, and significantly reduced the number of Panels held.
- We introduced the idea of the core offer which allows families to access services at St Quintin without a big assessment.
- We quickly implemented new regulations which enabled us to provide overnight care for children without having them "looked after" and having to do all the paperwork that went with that.
- We introduced a new much simplified recording system for use by social care workers, OT and key workers.

*Cont'd pg 2 >>*



THE ROYAL BOROUGH OF  
**KENSINGTON  
AND CHELSEA**

## Expanding the range and effectiveness of day services in order to reduce demand for overnight services

- We have increased the holidays away from home during the summer fourfold.
- We have increased the range of services on offer at St Quintin, with more daytime groups, more trips out, and more activities.
- We have set up arrangements for families to easily access help in an emergency.

## Making the best use of our staff

- We have reconfigured the staffing at St Quintin so that Tracy now has a proper deputy. There is also a full time social worker attached, and the key workers will be based there.
- We have also been working behind the scenes to try to improve transition arrangements. We now have an “adults” worker who works half time in the children’s team and a “children’s” worker who works half time in an adult’s transitions team. We believe this has already made a difference and provides everyone with more certainty and continuity.

## Other developments

In addition to this we have significantly updated the Children with Disabilities section of the Council’s website and of course developed and launched the St Quintin website, making it easy for families to see what activities are planned and enabling families to book things online.

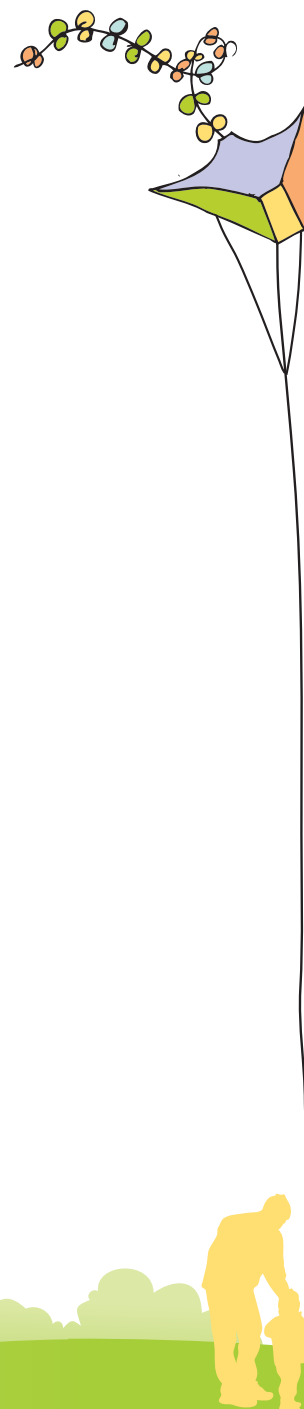
In the summer we held two big consultation meetings about the Short Breaks Statement (which is now on our website). The evening session was particularly well attended and not only very useful in terms of getting your views but also very enjoyable with a lovely BBQ and a steel band for our entertainment.

From this meeting we agreed to develop plans to:

- monitor the take-up of the core offer to ensure fairness
- develop more services in the south of the borough
- clarify and improve access to transport for those who need it
- provide more services suitable for wheelchair users
- continue to develop the websites while keeping other forms of communication going, and

- continue to develop and try out new services in response to families and children’s wishes.

Looking forward, I anticipate further collaboration with Hammersmith & Fulham and Westminster, probably around training, and the commissioning of play and other services from the voluntary sector.



# Looking back over the year

## Highlights from St Quintin

The St Quintin core offer has expanded over the last year. We now provide alternate Saturdays as core offer and a variety of afterschool activities and holiday activities. New for this year was the use of the Hydro pool at Jack Tizzard School and Companion cycling at the bike works based at Wormwood scrubs. In the summer our family days out were extremely popular

and included trips to the seaside and Drucillas.

This summer, 13 young people went on holiday with St Quintin. For many it was their first trip away from home. We went camping at a festival and caving in the Lake District. We are already looking at new places for next summer.

The St Quintin caravan was fully booked every week of

the school holiday and most weekends from May to September. We have taken on board everyone's helpful comments and hope to see an improved service on the change over days. In January we will continue to have our popular pampering sessions on Friday mornings with two new therapists starting. These can be booked direct through the centre or over the phone.

**Tracy**

## Highlights from the Children with Disabilities team

Best wishes for the New Year from the Children with Disabilities Team. There have been a few changes in the team. Lynda Fox has returned as senior social worker alongside Jowita Poniewska. Sarel Eloff, who was running the shared care volunteer scheme, has moved on to become the social worker based at St Quintin. Nicola Campbell has joined Rita Perl to continue providing an excellent occupational therapy service.

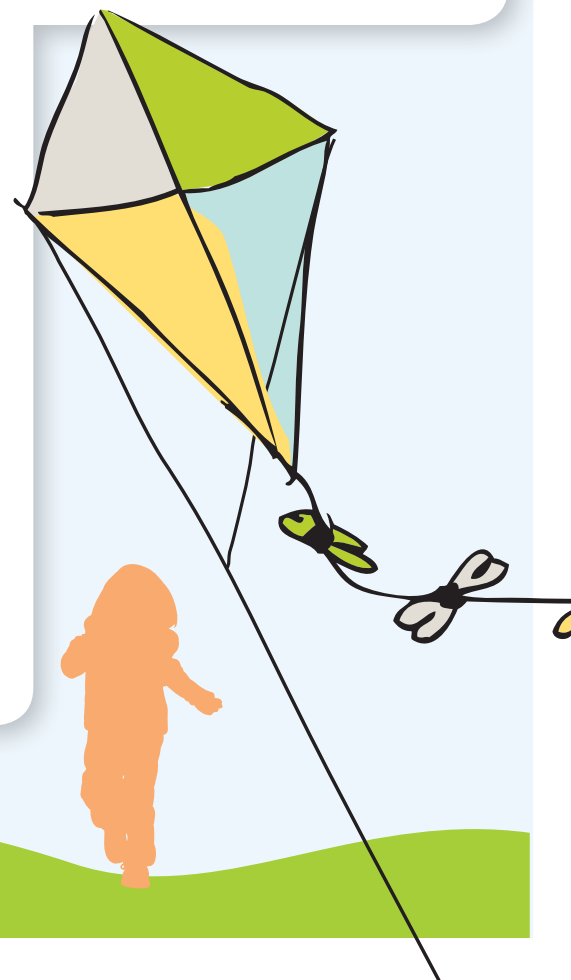
Mostly the staff group has remained the same and I hope that this continuity has helped you to get an efficient

and responsive service from us. I'd like to say a particular thank you to Paula Ellery, our longest serving team member, for her contribution to this as our Respite Service Coordinator.

If you receive Direct Payments you will have had a request from Paula to send in some details. As there has been a bit of confusion about the rules, I'll be sending out a letter to parents to clarify some issues that have arisen.

The Children with Disability Panel process has been simplified. This is helpful. We have looked at over 170 requests for individual packages of support in the past 12 months.

I've really appreciated having a partnership with the St Quintin Centre and the way they can help us when we need to come up with support for a family at short notice.



The new way of reviewing overnight respite care with less bureaucracy is now up and running. CWDT staff are continuing to visit children and young people at the Haven or their school setting to make sure everything is alright for them. I'm enjoying chairing some of the reviews and having an opportunity to meet with you and the placement at least once a

year to discuss how things are going.

The arrangement of having a transition worker continuing to work with young people beyond 18 is working well. It's helping us all get a better understanding of the different rules and procedures that the adult teams work with and to plan ahead better for families.

The shared care scheme where families were linked with a volunteer has come to an end. All the volunteers who want to continue have been linked into St Quintin's pool of sessional workers so they can continue to support their families.

**Peter**

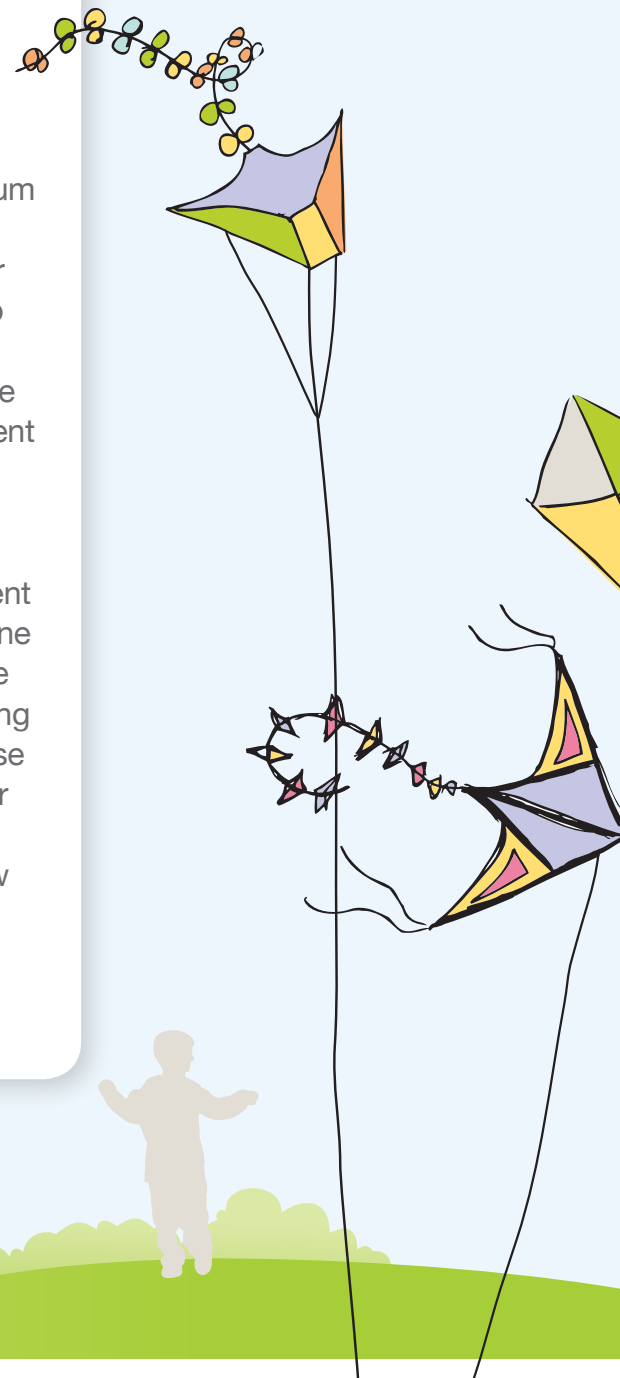
### **Highlights from BFST**

The BFST has continued to offer a specialist CAMH Service to children with moderate-severe learning disabilities and/or autistic spectrum disorder where there are concerns about their behaviour or emotional wellbeing. Following lots of staff changes in 2010, there has been a stable staff group over the past year, with Kate Doherty, Clinical Psychologist, joining the service in January 2011. We were also pleased to be allocated a trainee Clinical Psychologist once again from UCL who will be with us until next summer.

Our annual audit revealed a return to more usual rates of referral after a busy year in 2009/2010, with two thirds

of these cases being re-referrals, returning from more input as new issues arise. Over two thirds of the children referred had a diagnosis of autistic spectrum disorder. There was a slight increase in waiting times for the service which is likely to reflect gaps in staffing for the last months of 2010. The average length of involvement for each referral was 15 months, with 83 per cent of difficulties presented at referral showing improvement at the point of discharge. One issue for the team is that we have consistently been taking on more cases than we close year on year, leading to ever increasing caseloads and less time to dedicate to new cases.

**Carolina/ Tamsin**



## Other Highlights

### Re-launch of the Way Ahead register

All local authorities are required to maintain a register of children with a disability living in their area for the purpose of service planning to meet their needs, and those of their families under The Children Act (1989). Our own register, Way Ahead, is shared across Hammersmith & Fulham, Kensington and Chelsea and Westminster and has been in place since 1992. In June of this year we re-launched the register as we wanted to reach many more families in the area who have a child with special needs. The register was promoted in a number of ways in order to make it much more visible and accessible.

Information was made available via all three council websites, a Tri-borough Summer in the City brochure, through health partners and GP surgeries, parent participation groups, local leisure centres and other local partners.

A new membership card was also introduced for the distinct purpose of identifying that the child is known to the register. This card is not tied in to or linked to any other form of disability card or benefit, but came about as some parents had expressed that they felt a membership card could be beneficial to them in certain situations to identify that their child was known to the register as they have a special need or disability.

The use of this card is completely voluntary, and some parents / carers may find it useful in getting assistance and understanding for their child in many different situations.

For more information click on the following link:

**[www.rbkc.gov.uk/educationandlearning/familyinformationservice/childrenwithdisabilities/wayaheadregister.aspx](http://www.rbkc.gov.uk/educationandlearning/familyinformationservice/childrenwithdisabilities/wayaheadregister.aspx)**

**Jenny Mowbray**  
**Quarterly Report Data**

**Richard Holden**  
**Head of Health Needs and Disabilities**





## Team-based statistics

The tables below show an overview of services provided to children and families by the Children with Disabilities team, Health Link Team and the Keyworker Service during the year. This information has been taken from the Children in Need Census which is an annual statutory return made to the Department for Education; it is a profile of all children referred to and receiving a service from the Council's Family and Children's Services during the 2010/11 year.

### Children with Disabilities Team

#### Children Looked After 2010-11

Number of children looked after as at 31st March 2011	8
Number of children looked after (respite only) as at 31st March 2011	18

#### Child Protection 2010-11

Number of Section 47 investigations	27
Number of children with a Child Protection Plan on 31st March 2011	0
Total number of Child Protection Plans in the year	5

#### Referrals and Assessments during 2010-11

Number of referrals to team	24
Number of Initial Assessments completed	18
Number of Core Assessments completed	58

#### Number of children worked with during 2010-11

Children with a disability	166
Non disabled siblings	113
Families	138

### Healthlink Team

#### Children Looked After 2010-11

Number of children looked after as at 31st March 2011	2
Number of children looked after (respite only) as at 31st March 2011	0

#### Child Protection 2010-11

Number of Section 47 investigations	25
Number of children with a Child Protection Plan on 31st March 2011	5
Total Number of Child Protection Plans in the year	10

#### Referrals and Assessments during 2010-11

Number of referrals to team	214
Number of Initial Assessments completed	178
Number of Core Assessments completed	56

#### Number of children worked with during 2010-11

Children	273
----------	-----

### Keyworker Service

#### March 2011

Number of children referred for a service from a Keyworker	75
--	----

#### Disability Issues - Areas Affected by Disability

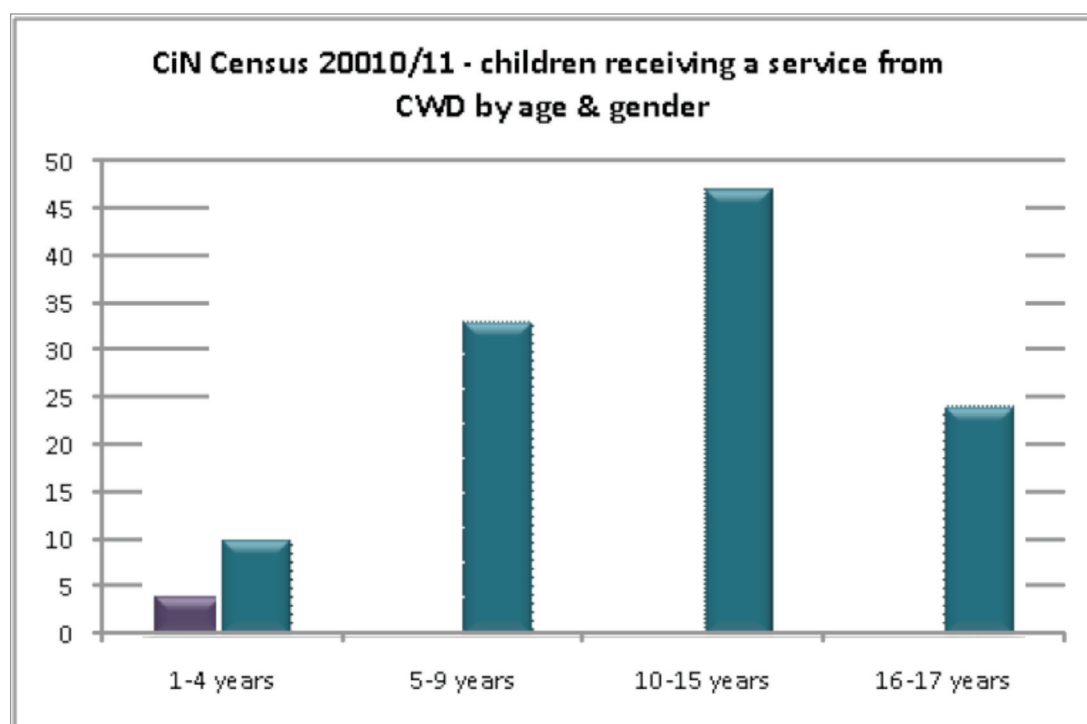
Autism	23
Chronic Condition	15
Communication Difficulties	42
Hearing Impairment	4
Learning Difficulty	48
Physical Disability	22
Visual Impairment	6

#### Age of children accessing Keyworker Service

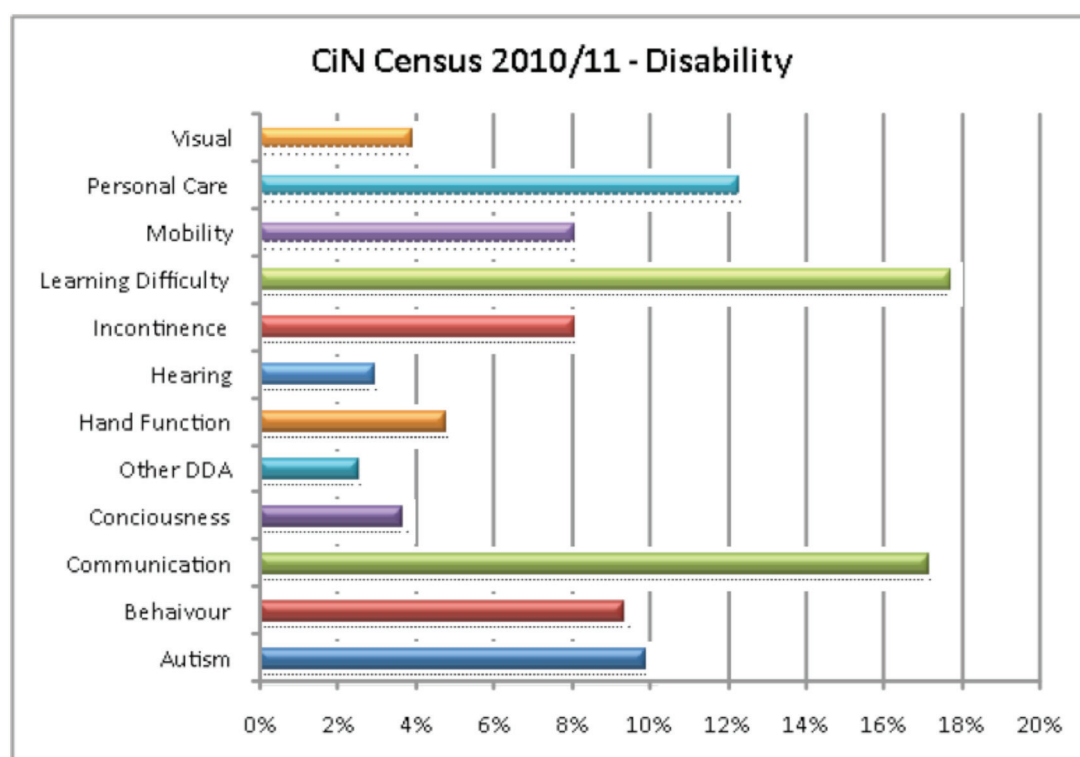
Under 1 year	2%
1 year old	6.9%
2 years old	17.8%
3 years old	21.8%
4 years old	21.8%
5 years olds	13.9%
6 years old and over	15.9%

## Statistics from the CiN Census

The graph below shows a breakdown of the children identified as having a disability who received a service via CWDT during the year by their age and gender.

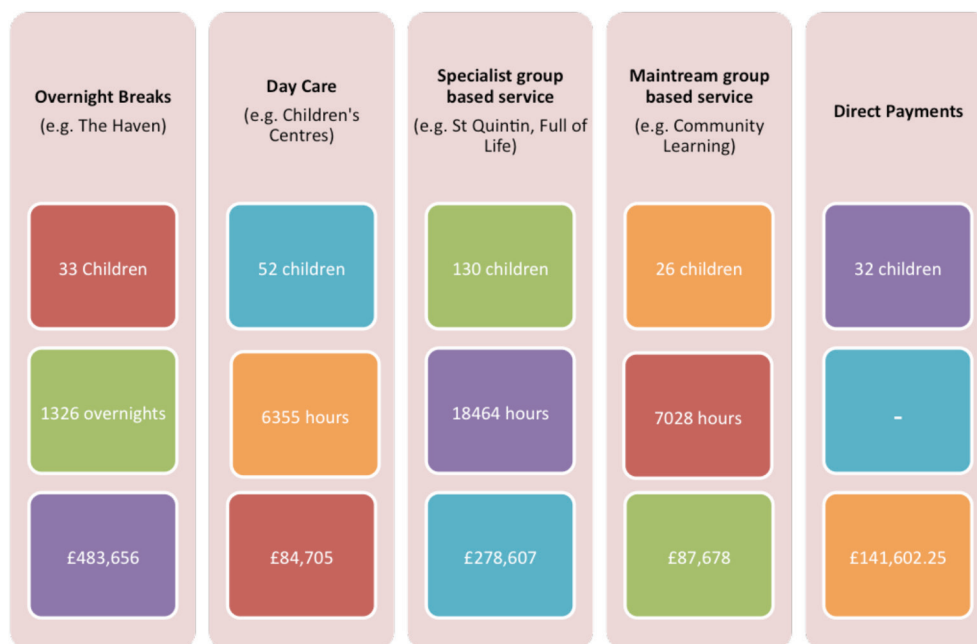


The table below shows the type of disabilities identified which affect the children who have received a service via CWDT during 2010/11.



# Statistics you might find interesting about short breaks...

The following is a breakdown of our Short Breaks provision for 2010/11



A total of **182** children received a short break service during the year.

We no longer make a LAIMP return to Together for Disabled Children but we have decided to continue to collect the data about our Short Break provision as this is still useful.

## The Shared Disability Register

The Shared Disability Register is a voluntary register of residents with a disability. Kensington and Chelsea shares its register with Hammersmith & Fulham and Westminster, and it is a joint register with the PCT's.

