

Housing Legacy Fund

Analysis of stakeholder consultation

May 2021

Putting Communities First Team
The Royal Borough of Kensington and Chelsea
consult@rbkc.gov.uk



THE ROYAL BOROUGH OF
KENSINGTON
AND CHELSEA

Introduction

What is the Housing Legacy Fund?

The Council has set aside £1m over the next three years for the creation of a new Housing Legacy Fund. The funding comes from the ringfenced Grenfell Recovery budget that was previously used to support temporary accommodation costs for those affected by the tragedy. It is separate from mainstream Council funding and is specifically for initiatives that seek to build a positive local legacy from the Grenfell tragedy that is meaningful to local people.

Who is Housing Legacy Fund for?

This initiative is for residents living in a Council owned property in the ward of Notting Dale, this includes both properties that are part of estates as well as non-estate properties. Residents that are in temporary accommodation in the Notting Dale ward will also form part of this initiative.

As such we will be allocating funding on a per property basis and properties will then be grouped together. For those living on estates, the estates will form the natural 'group', and the consultation had some questions for residents of small blocks, street properties and temporary accommodation as how best they could be grouped.

Why we consulted

We want to ensure that local people can influence the support that is available to them and that they are at the heart of decision making. Within each group, residents will have the opportunity to put forward their ideas for projects and will be able to decide which ones are funded.

We have spoken to Residents' Associations across the Notting Dale ward about the fund and have incorporated their feedback into the current proposals. We wanted to hear from a wider group of residents on the following three areas:

- What kinds of projects would you like to see supported by the fund?
- How can we ensure the process for selecting proposals is fair, inclusive and accessible?
- What kind of support can we provide to residents to put forward proposals?

We will use the feedback to guide the criteria that proposals will need to meet. Residents will then be able to put forward ideas for specific projects before deciding which ones are funded.



Introduction

Consultation methodology

On 29 March 2021 the Council launched an online survey to gather tenants' views on the Housing Legacy Fund. All tenants in the Notting Dale ward were written to, encouraging them to complete an online survey. The online survey was accessible via a private link, to restrict responses to tenants from the Notting Dale Ward. Paper copies of the survey were also available on request

Report

A total of 121 surveys were returned by the closing date of 9 May 2021. This report contains an analysis of survey responses. Where graphs are shown, percentage figures are used; where percentages do not total 100 per cent this may be because respondents have been able to select more than one answer or respondents may have chosen not to answer a specific question. A separate appendix report is also available on request, containing data tables and all comments made by respondents to the survey.

Acknowledgements

The Council would like to thank all tenants that took the time to feedback their views.



Results at a glance

Projects the fund should cover

- From a list, respondents were asked what kind of housing related projects the fund should cover. The most popular choices were:
 - ***'Projects that increase economic opportunities for residents'*** (70 per cent supported this)
 - ***'Community safety projects'*** (67 per cent supported this)
- Respondents were asked for other suggestions they felt projects should focus on. Suggestions included ***'environmental projects/green spaces'***, ***'investing in housing stock/estates'***, ***'sports/fitness'*** and ***'activities for children/young people'***.

Support to submit a proposal

- When asked about what kind of support they might need if submitting a proposal, the most common themes were in relation to ***'general support from the Council/experienced person'*** (seven comments) and ***'proposal/bid writing support'*** (seven comments).

Encouraging residents to submit a proposal or get involved

- Respondents were asked what would encourage residents to submit a proposal or get involved. The most commented on themes were in relation to ***'writing to residents/leaflets'*** (12 comments) and ***'meetings'*** (11 comments).

Decision making processes

- Respondents were asked which decision making processes they would feel comfortable with.
- Over half (52 per cent) would be comfortable with an ***'online/paper survey'***.
- A similar percentage (51 per cent) would be comfortable with ***'live or online voting process with proposals being pitched'***.

Possibility of joint projects

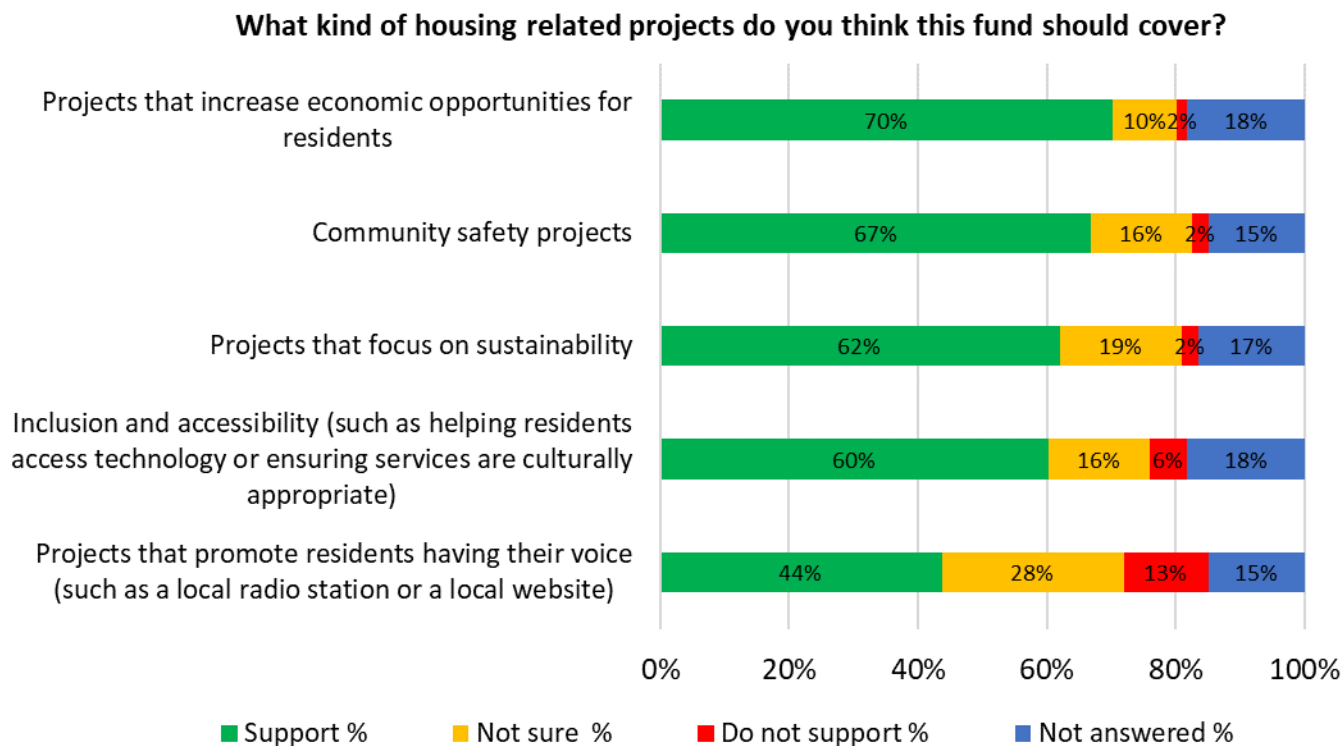
- Respondents were asked if they would support estates/groups being able to come together to develop joint projects and if they had views on how they could be managed. The most commented on theme was in relation to ***'supporting estates/groups coming together to develop joint projects'*** (43 comments).



Projects the fund should cover

Respondents were asked what kind of housing related projects the fund should cover.

- A total of 70 per cent of respondents supported '**projects that increase economic opportunities for residents**'.
- Two-thirds (67 per cent) of respondents supported '**community safety projects**'.
- Six in ten or more supported '**projects that focus on sustainability**' (62 per cent) and '**inclusion and accessibility projects**' (60 per cent).
- From the list, the least supported projects were '**projects that promote residents having their voice**' (44 per cent).



Base: All responses (121)



Other suggestions

Respondents were given the opportunity to make other suggestions. Comments made have been themed and the themes with two or more comments are summarised in the table below. Examples of comments made can be seen overleaf, with the full list of themes and comments made can be found in appendix two.

The most commented on themes were in relation to '**environmental projects/green spaces**' (12 comments) and '**invest in housing stocks/estates**' (eight comments).

Theme*	Comments
Environmental projects/green spaces	12
Invest in housing stock/estates	8
Activities for children and young people	6
Community engagement/community activities	3
Communication	2
Employment opportunities	2
New housing/access to housing	2
Services for disabled/vulnerable residents	2

**Themes shown with two or more mentions*



Other suggestions

“Lead the way with green ideas such as solar power panels fitted on our block. More planting and benches in Notting Dale.”

Environmental projects/green spaces

“Community farms / gardens.”

Environmental projects/green spaces

“More green spaces, we have very little in Notting Dale.”

Environmental projects/green spaces

“Activities or children - music and spaces.”

Activities for children and young people



“Support for employment of young people.”

Employment opportunities

“Council should be investing into the stock, fixing windows etc.”

Invest in housing stock/estates

“What we NEED is a well overdue upgrade in both the internal and external structure of the buildings in Silchester Estate!”

Invest in housing stock/estates

“Community engagement - introduction to local community support officers, local police and schools - bringing together the whole infrastructure (ecosystem) of residents, tenants, youth and local agencies. Let's get to know one another on more meaningful level.”

Community engagement/community activities



THE ROYAL BOROUGH OF
KENSINGTON
AND CHELSEA

Other projects the fund could cover

Respondents were given the opportunity to suggest other ideas for projects the fund could cover. Comments made have been themed and the themes with three or more comments are summarised in the table below. Examples of comments made can be seen overleaf, with the full list of themes and comments made can be found in appendix two.

The most commented on theme was in relation to ***‘investing in housing stock/estates’*** (13 comments).

Theme*	Comments
Invest in housing stock/estates	13
Sports/fitness	12
Environmental projects/green spaces	10
Activities for children/young people	9
Services/support for disabled/elderly/vulnerable residents	9
Community centre/venue	5
Community safety	3
Education support	3
Employment opportunities	3
Memorial to Grenfell Tower tragedy	3
Training	3

**Themes shown with three or more mentions*



Other projects the fund could cover

“Improvement in general and fire safety of buildings and repairs as well!”

Invest in housing stock/estates

“Repairs to homes, make homes healthier and safer.”

Invest in housing stock/estates

“Outdoor gym.”

Sports/fitness

“Sport facilities for only women.”

Sports/fitness

“Run workshops on drugs awareness and knife crimes for children from the age of 7-16.”

Activities for children/young people



“Environmental sustainability and greener parks.”

Environmental projects/green spaces

“Outings for older residents, such as a show, museums, London eye or a trip out of London. Community BBQ or picnic.”

Services/support for disabled/elderly/vulnerable residents

“Fund the Curve community centre.”

Community centre/venue

“Roof top memorial garden on top of Grenfell Tower and the building used for community use. “

Memorial to Grenfell Tower tragedy



Support to submit a proposal

Respondents were asked, if they were thinking about submitting a proposal, what kind of support would be helpful to do so. Comments made have been themed and the themes with four or more comments are summarised in the table below. Examples of comments made can be seen overleaf, with the full list of themes and comments made can be found in appendix two.

The most commented on themes were in relation to **'general support from the Council/experienced person'** (seven comments) and **'proposal/bid writing support'** (seven comments).

Theme*	Comments
General support from Council/experienced people	7
Proposal/bid writing support	7
Communication/information	6
Not looking to submit a proposal	6
Don't know	5
Consultation/community engagement	4
Easy, accessible process	4
Group/community support	4

**Themes shown with four or more mentions*



Support to submit a proposal

“Support by people that know what they are doing in RBKC.”

General support from Council/experienced people

“Support in engaging other residents to get involved.”

Consultation/community engagement

“Everything needs to be simple due to the varying levels of education in the area. An email and phone hotline for people to use for help would be good.”

Easy, accessible process

“Group support.”

Group/community support

“I am unlikely to submit a proposal.”

Not looking to submit a proposal



“How to develop an idea into a fully developed project.”

Proposal/bid writing support

“Support in writing proposals.”

Proposal/bid writing support

“Help us draw up plans and write to residents.”

Communication/information



THE ROYAL BOROUGH OF
KENSINGTON
AND CHELSEA

Encouraging residents to submit a proposal or get involved

Respondents were asked, if they were thinking about submitting a proposal, what kind of support would be helpful to do so. Comments made have been themed and the themes with three or more comments are summarised in the table below. Examples of comments made can be seen overleaf, with the full list of themes and comments made can be found in appendix two.

The most commented on themes were in relation to **'writing to residents/leaflets'** (12 comments) and **'meetings'** (11 comments).

Theme*	Comments
Write to residents/leaflets	12
Meetings	11
No suggestions/not applicable	10
Email/online	7
Door knocking/door to door	6
Ideas for projects/proposals	5
Ensure changes will happen as a results of proposals/projects	3
Incentives/awards	3
Make it easy to apply	3
On street/face to face discussions on the estate	3

**Themes shown with three or more mentions*



Encouraging residents to submit a proposal or get involved

“Sending out letters from Lancaster West estate office will help and inviting most residents to be involved in the process.”

Write to residents/leaflets

“Write out letters to everyone.”

Write to residents/leaflets

“Face to face meetings. I do not have Zoom so will not be able to participate in any meetings. (I am sure all meetings will be taking place online.) This excludes people who do not own a computer, lack internet access or cannot use the technology.”

Meetings

“Email is the best way. No one has time for zoom meetings or care about leaflets.”

Email/online



“Door knocking. As some residents are not computer literate, some have English as their second language and some don't communicate with Resident's Association.”

Door knocking/door to door

“Offer them £25 voucher each and they will be more than happy to participate.”

Incentives/awards

“Keep the process as simple as possible.”

Make it easy to apply

“Yes by showing RBKC is intent on listening to its residents (always necessary on all issues).”

Ensure changes will happen as a results of proposals/projects

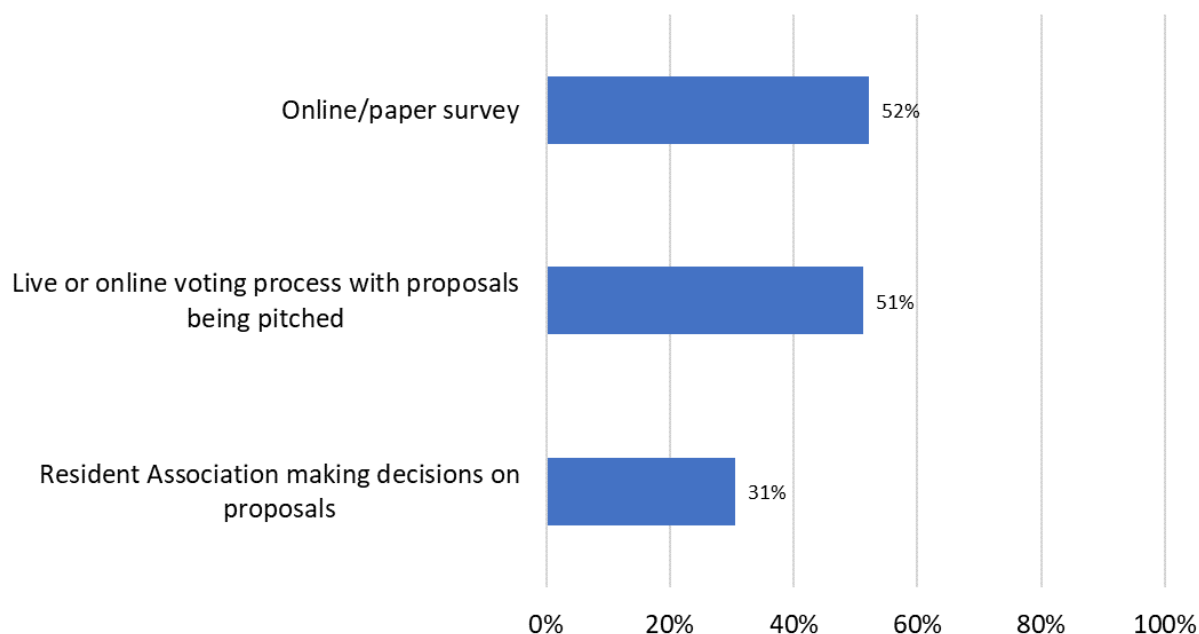


Decision making processes

Decisions on which proposals to follow will be taken at an estate/group level. Respondents were asked which decision making processes they would feel comfortable with. Respondents were able to select as many options as they wished.

- Over half (52 per cent) would be comfortable with an ***'online/paper survey'***.
- A similar percentage (51 per cent) would be comfortable with ***'live or online voting process with proposals being pitched'***.
- Just under a third (31 per cent) felt comfortable with a ***'resident association making decisions on proposals'***.

Decisions on which proposals to follow will be taken at an estate/group level. Which of the following decision-making processes would you feel comfortable with?



Base: All responses (121)



Other suggestions on the decision making process

Respondents were asked if they had other suggestions on how the decision making process could take place. Comments made have been themed and the themes with three or more comments are summarised in the table below. Examples of comments made can be seen overleaf, with the full list of themes and comments made can be found in appendix two.

The most commented on themes were in relation to **'no suggestions'** (14 comments) and **'voting (by text, online or in person)'**.

Theme*	Comments
No suggestions	14
Voting (by text, online, postal or in person)	9
Other/unrelated to decision making processes	7
Meetings/presentations	4
Door to door	3
Independent process/panel	3
Online meetings	3
Survey	3

**Themes shown with three or more mentions*



Other suggestions on the decision making process

“Via online voting.”

Voting (by text, online, postal or in person)

“Via text/SMS service for voting.”

Voting (by text, online, postal or in person)

“Please provide us with the option to vote online and on paper and decide to any suggestions or decisions you are likely to take in the future.”

Voting (by text, online, postal or in person)

“Provide as many ways possible for all residents’ voices to be heard!! Online, telephone, door to door, paper survey. RAs are too exclusive.”

Online meetings

“Dragon Den style pitch.”

Meetings/presentations

“Out of borough suggestions to make process 'fair' i.e. impartial chair/panel.”

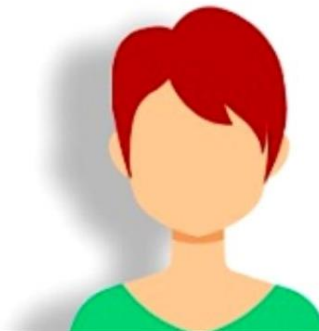
Independent process/panel

“Door to door or community meetings.”

Door to door

“As you do now with postal service (paper survey).”

Survey



Possibility of joint projects

Respondents were asked if they would support estates/groups being able to come together to develop joint projects and if they had views on how they could be managed. Comments made have been themed and the themes with two or more comments are summarised in the table below. Examples of comments made can be seen overleaf, with the full list of themes and comments made can be found in appendix two.

The most commented on theme was in relation to '**supporting estates/groups coming together to develop joint projects**' (43 comments).

Theme*	Comments
Support estates/groups coming together to develop joint projects	43
Do not support joint proposals/estate by estate	14
How process could be managed/organised	14
Unsure	5
Other/not related to joint projects	4
No views on this	2
One pot of money	2

**Themes shown with two or more mentions*



Possibility of joint projects

“Yes, groups from Lancaster West Estate if we have similar ideas.”

Support estates/groups coming together to develop joint projects

“I don't know how this would work as it's difficult enough to get people to come together in one estate, so probably not.”

Do not support joint proposals/ estate by estate

“Yes. this is a way to ensure we become a real community.”

Support estates/groups coming together to develop joint projects



“Separate pot for each.”

Do not support joint proposals/ estate by estate

“Yes joint projects is a brilliant idea when all residents come together to work as equal partners.”

Support estates/groups coming together to develop joint projects

“Yes, but only when the projects have been voted by the residents and chosen by a majority vote.”

How process could be managed/organised

“Yes estates could come together.”

“Yes - managed through a joint committee or residents association.”

Support estates/groups coming together to develop joint projects

How process could be managed/organised

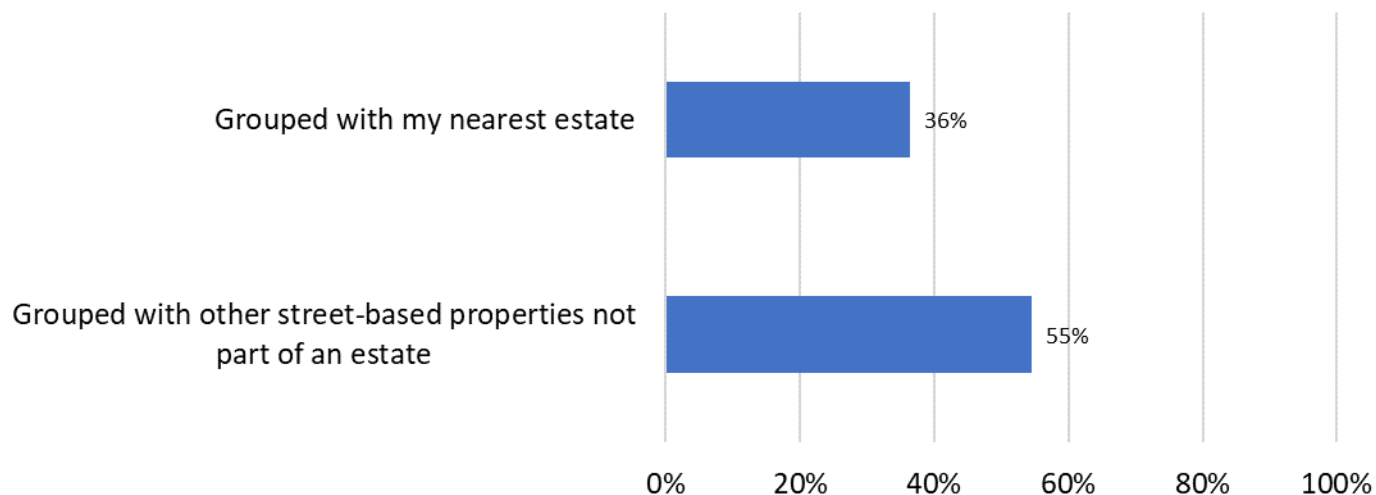


Street based properties

Residents living within estates will have their funding grouped by estate, this is because of the geographical ease of accessing services. Those respondents living in street based properties (11) were asked how they would prefer their funding allocation to be grouped. This question was only open to respondents living in street based properties, as only 11 respondents fell into this category, the results below should be treated with caution.

- Over half (55 per cent) of respondents would like their funding allocation to be ***'grouped with other street based properties, not part of an estate'***.
- Just over a third (36 per cent) would like their funding allocation ***'grouped with their nearest estate'***.

If you live in a street-based property, please tell us how you would prefer your funding allocation to be grouped?

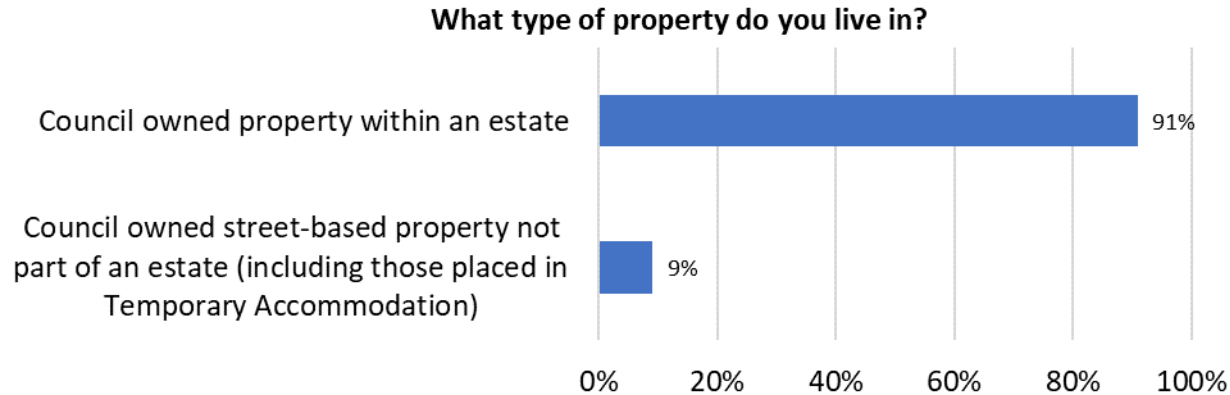


Base: Those living in street properties (11)

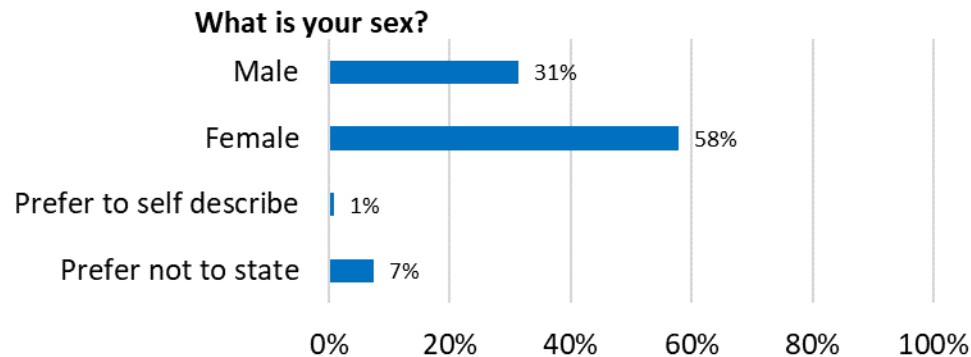


Profile of respondents

Respondents were asked a series of questions about themselves, to understand who had responded to the consultation.



Base: All responses (121)

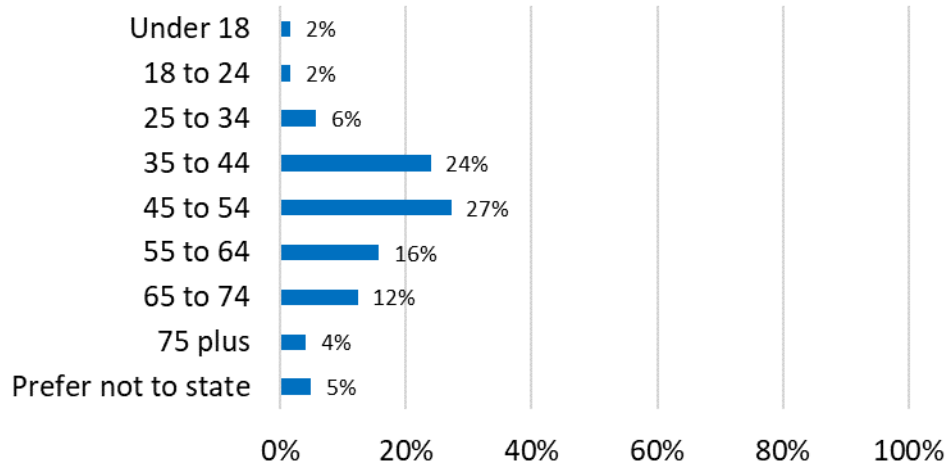


Base: All responses (121)



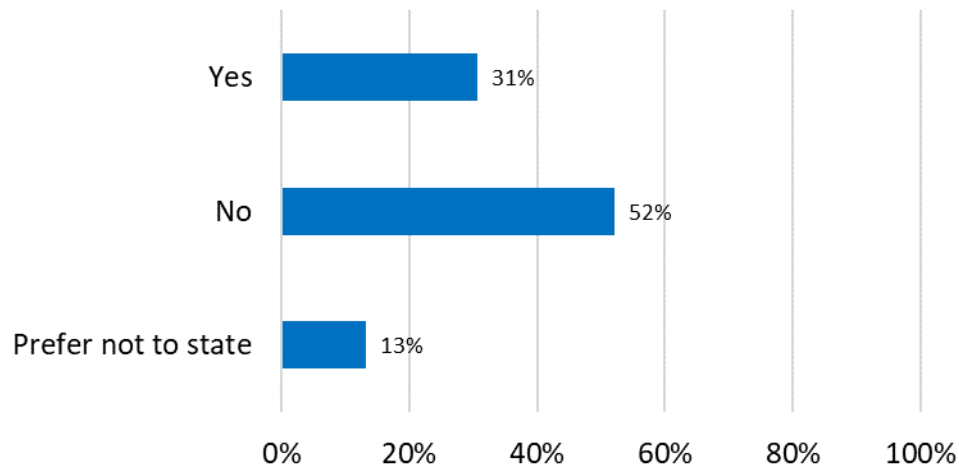
Profile of respondents

Which age group do you belong to?



Base: All responses (121)

Do you have a long-term illness, health problem or disability which limits your daily activities?

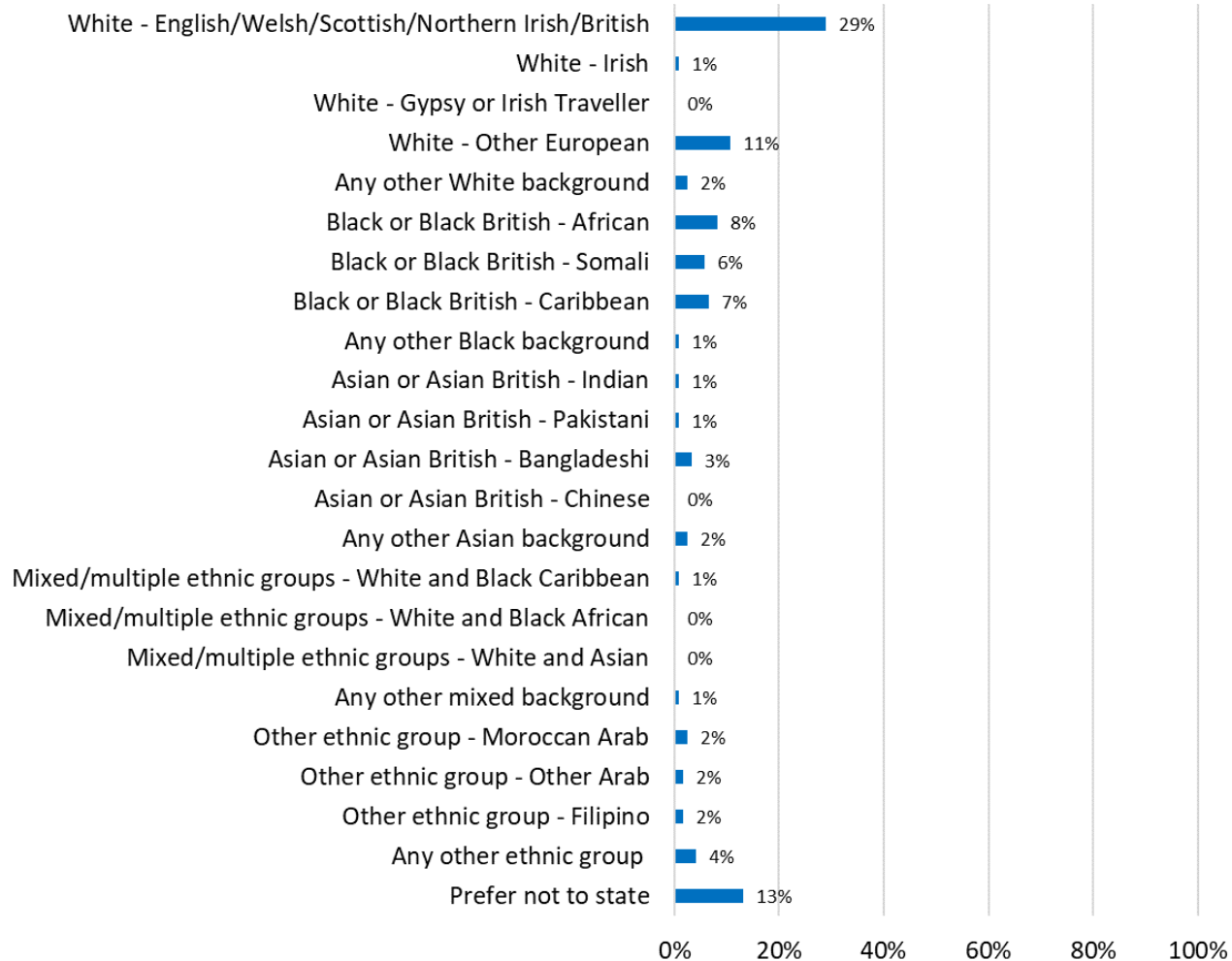


Base: All responses (121)



Profile of respondents

How do you describe your ethnic origin?

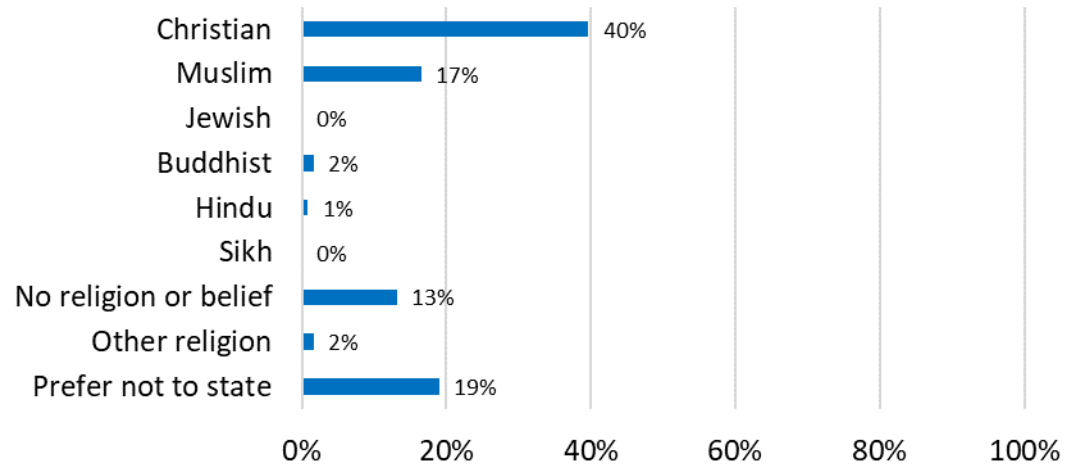


Base: All responses (121)



Profile of respondents

What is your religion or belief?



Base: All responses (121)



Postcode analysis

Respondents were asked to supply their postcode, analysis of where responses have come from are displayed below.

