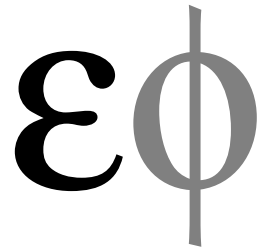


LONDON BOROUGH OF SUTTON

**ROYAL BOROUGH OF KENSINGTON AND CHELSEA AND
THE LONDON BOROUGH OF SUTTON JOINT SCRUTINY
COMMITTEE - ROYAL MARSDEN NHS FOUNDATION TRUST**

MONDAY, 9TH MARCH, 2009



7.30 pm at the

Civic Offices, St Nicholas Way, SUTTON, SM1 1EA

To all members of the Royal Borough of Kensington and Chelsea and the London Borough of Sutton Joint Scrutiny Committee - Royal Marsden NHS Foundation Trust:

Chair: Councillor Christopher Buckmaster
Vice-Chair Councillor Jayne McCoy
Councillors:
LB Sutton Councillors Cliff Carter and Myfanwy Wallace.

RB Kensington & Chelsea Councillors Timothy Coleridge (Vice Chair OSC), Marianne Alapini, Terence Buxton, Maighread Condon-Simmonds, Robert Freeman, Dr Iain Hanham, Pat Mason, Julie Mills and Matthew Palmer.

*Paul Martin
Chief Executive
Civic Offices
St Nicholas Way
SUTTON
SM1 1EA*

27 February 2009

Enquiries to: Angela Guest, Democratic Services Tel: 020 8770 5122 Email: angela.guest@sutton.gov.uk

Copies of reports are available in large print on request

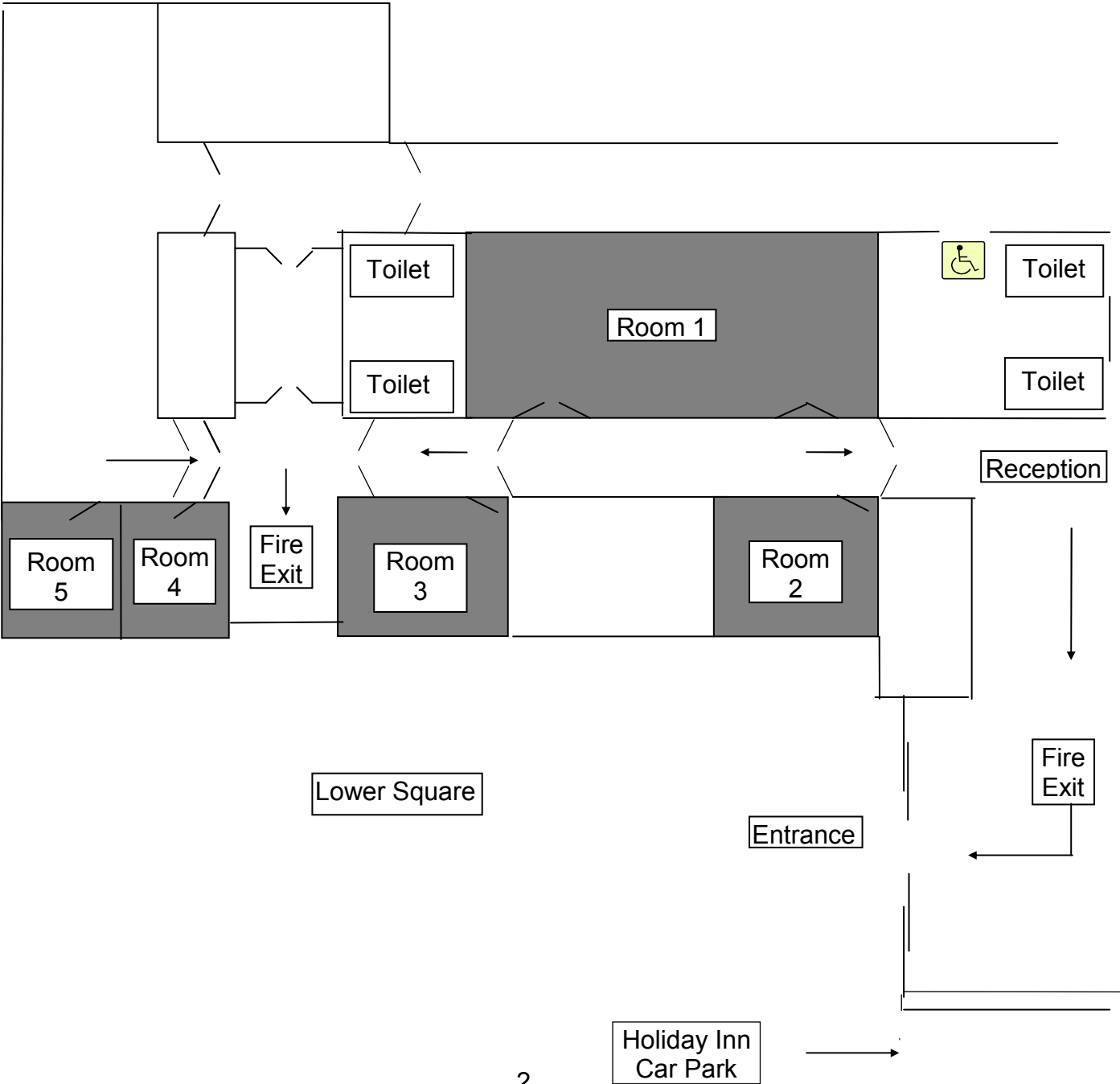
PARKING FOR THIS VENUE IS VIA GIBSON ROAD

**CIVIC OFFICES, SUTTON
GROUND FLOOR MEETING ROOMS**

FIRE PRECAUTIONS

If there is a FIRE in the building the fire alarm will sound continuously. Leave the building immediately by the most direct route, either back through reception or the fire exit into Lower Square. Take your coat and any bags with you. Assemble in the car park in front of the Holiday Inn.

First Aid can be obtained from Civic Security in reception.



Reminder – Declaration of Interests

Members should consider the following interests and whether they have any they should declare.

Personal interests:

Where it might reasonably be regarded that a matter will affect the well-being or financial position of you, a member of your family, any person with whom you have a close association, or any person or body with which you or they are involved or in which they have a relevant beneficial interest, to a greater extent than the majority of people affected by the decision.

In this case you should declare the interest and state the nature of it.

Personal and Prejudicial Interests:

Where a personal interest is thought to be so significant that a member of the public, with knowledge of the facts, would consider it likely to prejudice the member's judgment of the public interest.

In this case you should declare the interest, state the nature of it, and leave the meeting room.

Further information can be found in the Council's Code of Conduct and Protocol. If you are in any doubt as to whether you have an interest you should seek advice before the Committee meeting. If, during the course of the Committee meeting, you consider you may have an interest you should always declare it.

AGENDA

- 1. WELCOME AND INTRODUCTIONS**
- 2. MEMBERS' DECLARATION OF INTERESTS**
- 3. ROYAL MARSDEN NHS FOUNDATION TRUST (Pages 1 - 106)**
 - Presentation by Trust – 10 minutes
 - a) Annual Review 2007/08 – pages 1-48
 - b) Integrated Governance Monitoring Report – pages 49-106
 - Question and answer session from committee members – 40 minutes
 - Question and answer session with invited members of other interested councils – 10 minutes
- 4. ANY URGENT BUSINESS**