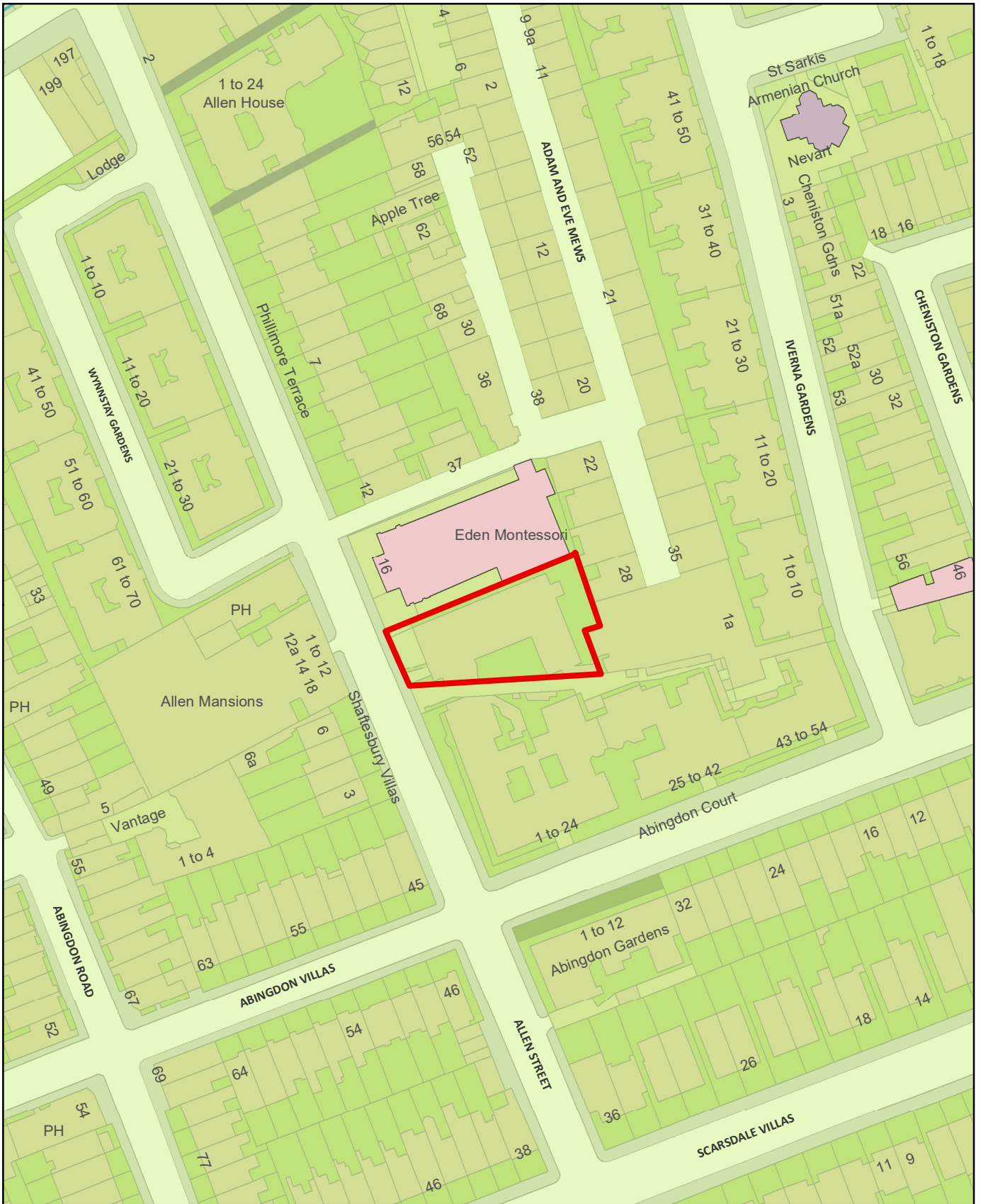


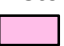






# Avon House, Allen Street, LONDON, W8 6BL



	1:1,250	 Conservation Areas	 Grade II
	@ A4	 Ward Boundaries	 Grade II*
© Crown copyright and database rights 2022 OS 100021668			<b>Listed Buildings</b>  Grade I
<b>Planning Support</b> The Royal Borough of Kensington and Chelsea The Town Hall, Hornton Street, London, W8 7NX +44 (020) 7937 5464		 THE ROYAL BOROUGH OF KENSINGTON AND CHELSEA	