



Family and Children's Services



Stronger families programme

Anne Marie Carrie, Executive Director
for Family and Children's Services

A large, stylized yellow arrow graphic pointing to the right, with a circular hole at its tail. The text "Stronger Families" is written in white on a yellow rectangular background that is part of the arrow's tail.

Stronger Families

FCS Stronger Families programme: 4 key messages

- 1 Brief history of Family and Children's Services
- 2 Recession and impact on public services
- 3 Our option for change – Stronger Families
- 4 Supporting each other through change



Stronger Families

Look back over the last few years

- Formation of FCS in 2006
- Implementing Every Child Matters
- Our local approach of "strong families"
- Joint Area Review inspection results (2007)
- Annual Performance Assessment (harder test)
- Partnerships - Children's Trust arrangements and Board
- Reshaped commissioning of third sector partners
- Responding to government / legislation
- Politically stable and nationally vocal



Stronger Families

But....

- High quality / high cost?
- Often unaware of true costs
- Duplication
- Too much intervention, for too long
- Too paternal – too caring - do we stifle families?



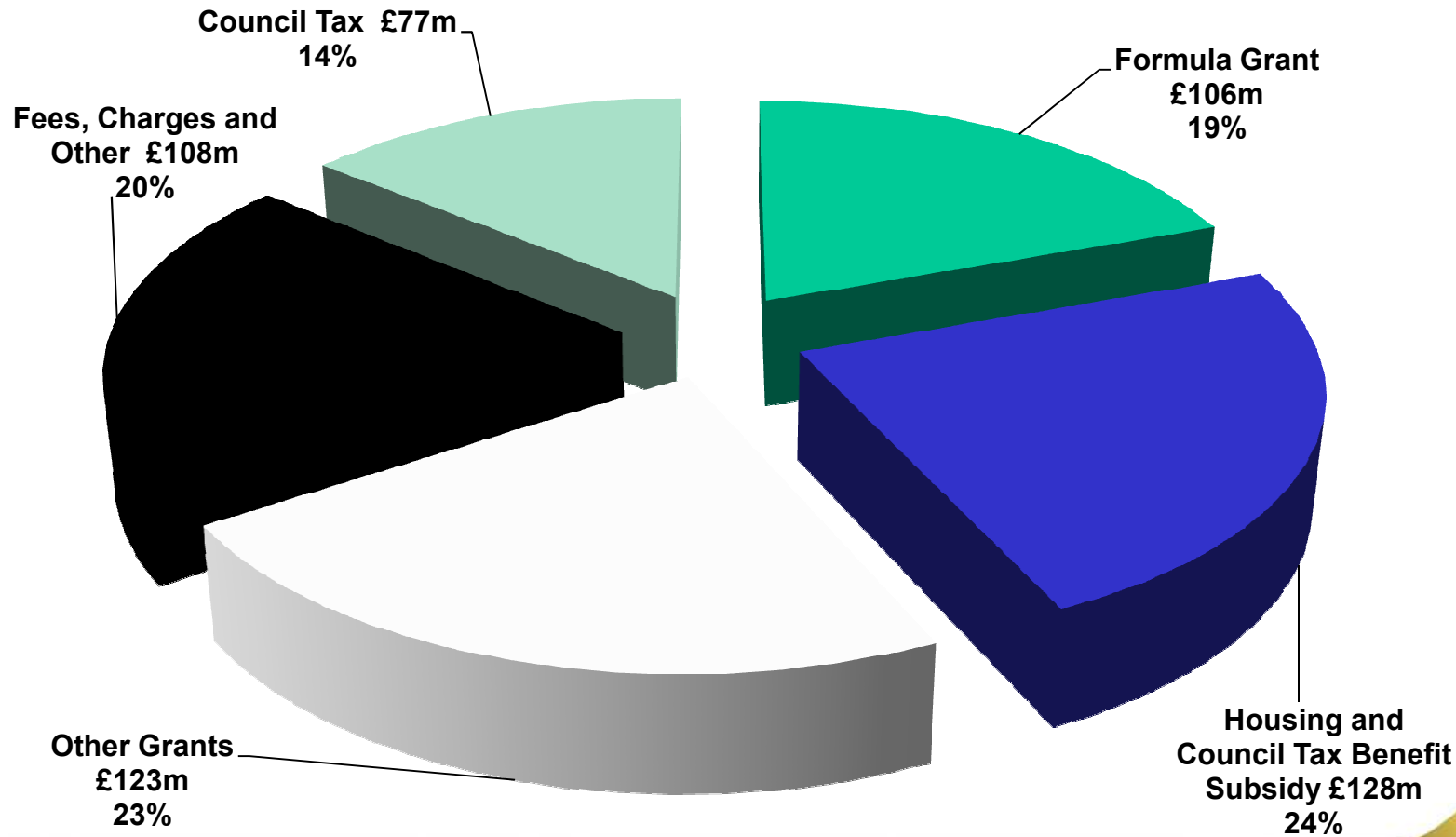
Stronger Families

Changing events

- Credit crunch
- Recession
- Bank bailouts
- National debt
- Bureaucracy
- Change of government
- Government budget 22 June
- Reduction in public finances

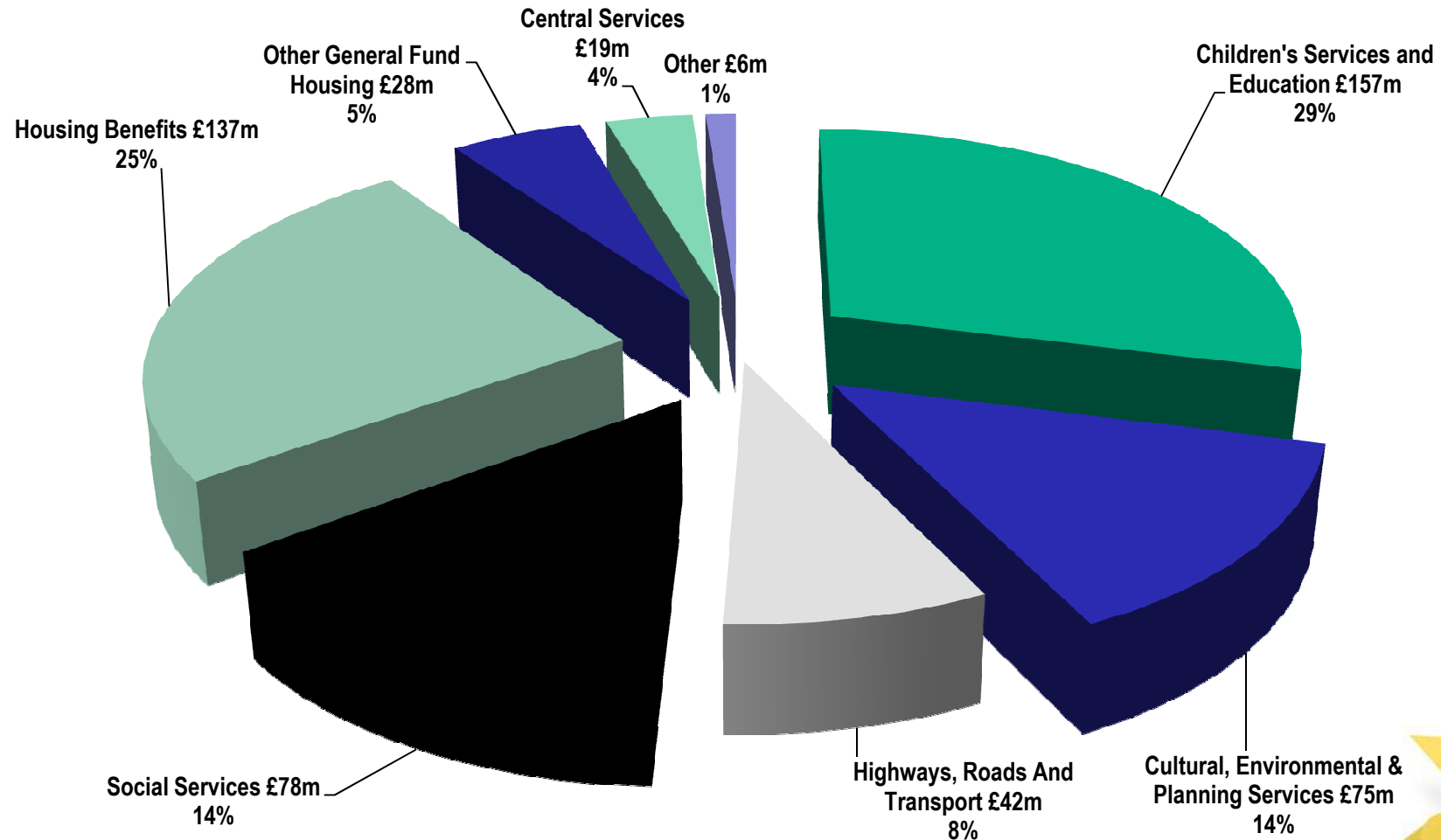


Where the Council gets its money



Stronger Families

Family and Children's Services



Stronger Families



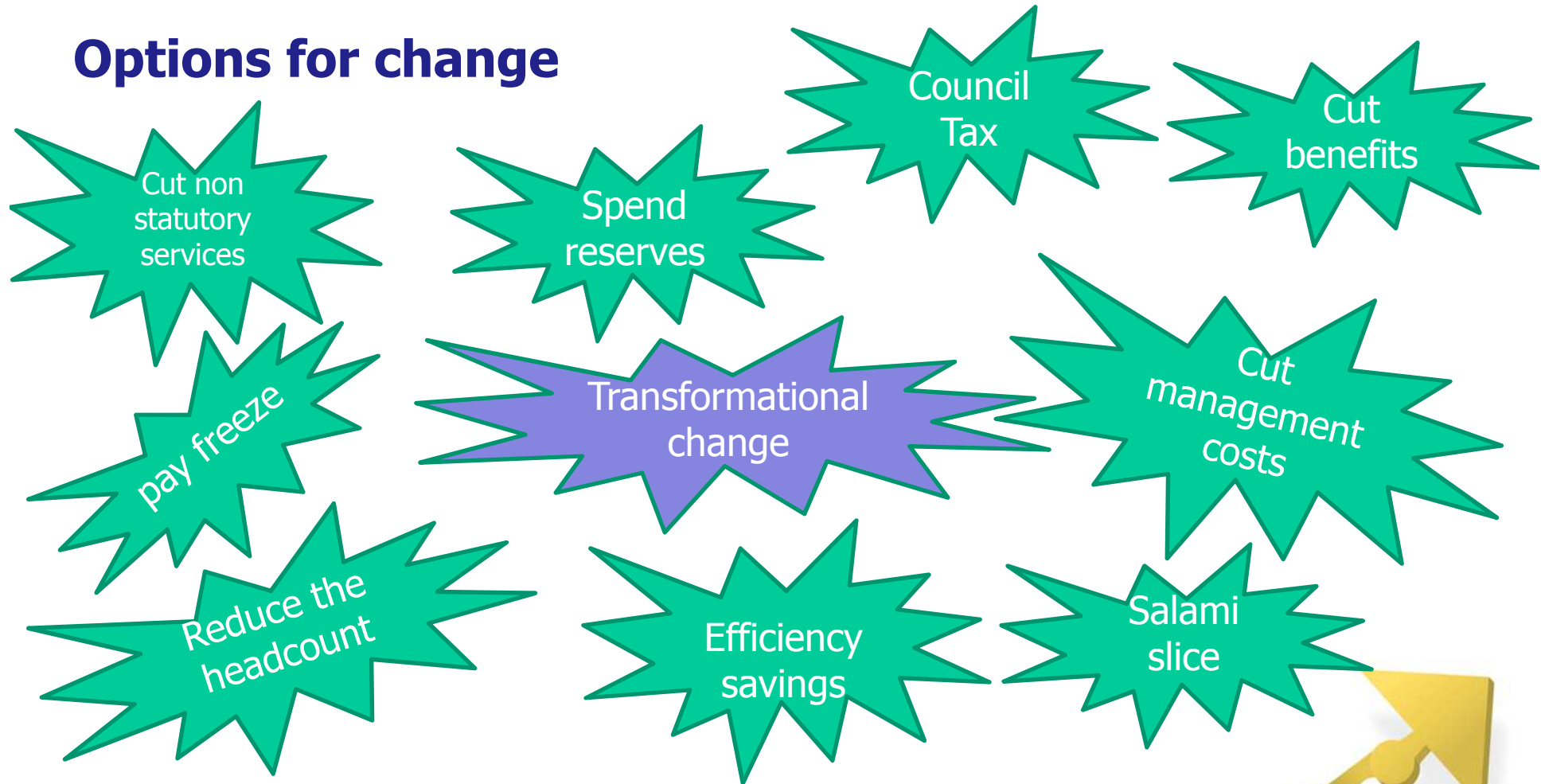
Royal Borough
Smartest Council

Family and Children's Services



THE ROYAL BOROUGH OF
KENSINGTON
AND CHELSEA

Options for change



Stronger Families

The case for a transformational change programme:

- "Smartest Council" ambition
- Programme management for transformational change
- Thoughtful, considered and planned
- Separate structure and dedicated time to deliver change
- Stronger Families as one of six programmes across the Council



Stronger Families

Why have a “Stronger Families” programme?

- ✓ Stronger Families as a vision and constant theme - Importance of family in childrens' lives
- ✓ Families enabled to make informed choices and consider their own needs - regardless of how we are organised
- ✓ Service transformation and redesign
- ✓ Future service offer – looking at thresholds, charges, subsidies
- ✓ Plan sustainable services and deliver substantial savings

Stronger Families programme

- ✓ Proactive approach - avert escalation of potential issues
- ✓ Access to information and services - as families prefer
- ✓ Efficient and effective
- ✓ First savings identified by July 2010
- ✓ Tough savings targets to be delivered **by the programme:**

2010/11	2011/12	2012/13	2013/14	2014/15
£0.0	£2.0m	£2.0m	£2.5m	£2.5m

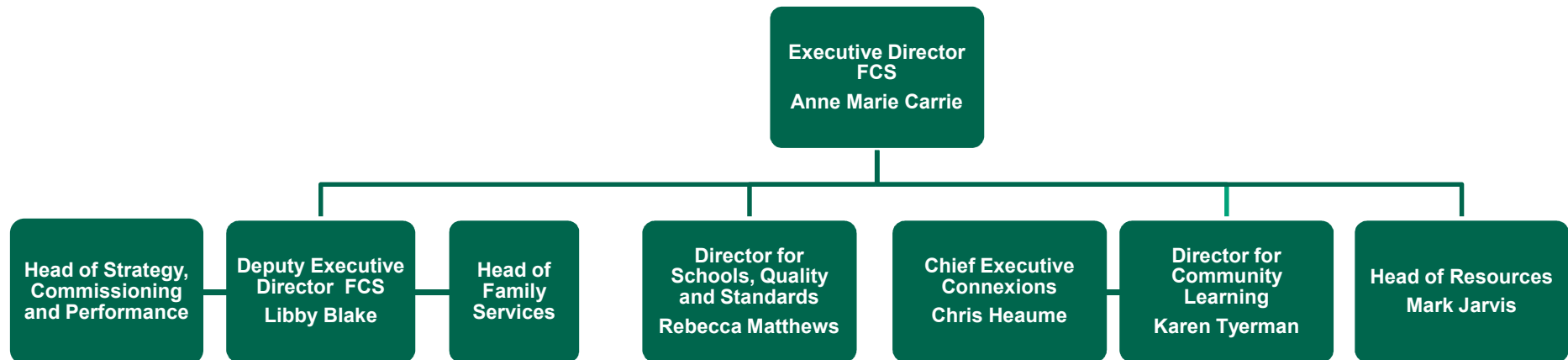
Cumulative £21.5 million saving over 4 years from 2011/12

Stronger Families

What is in the programme?

- Commissioning in planning our service offer
- Reviewing thresholds and access to our services
- Focus on early intervention and targeted prevention
- Phased implementation – some specific projects
- Harnessing and using technology better
- Reduce bureaucracy
- Likely to include high cost activities
- Includes managing demand (better?)
- Charges and income
- Family-centred / customer approach, not organisational

Interim Business Group structure



Stronger Families

Communicating change

- Staff engagement sessions (May and early June)
- Children's Trust Board briefing April 2010
- Chairs of Governors briefed May 2010
- Scrutiny briefing June 2010
- Change network forming
- RBKC Intranet site
- Dedicated email address



Family and Children's Services



More info / contact

strongerfamilies@rbkc.gov.uk

Stronger Families