



Scrutiny Report

2008/09



THE ROYAL BOROUGH OF
KENSINGTON
AND CHELSEA

Scrutiny Reports Completed during 2008/09

Cabinet and Corporate Services

- Scrutiny of Equalities
 - Reports on the scrutiny of Lancaster Youth Centre, the Town Hall Customer Service Centre, Whistler Walk Children's Home and Portobello Road Market Office

Housing, Environmental Health and Adult Social Care

- Older People's Accommodation in the Royal Borough
- Charging for Adult Social Care Services

Public Realm

- Wornington Green Estate
 - Examining the Case for Redevelopment

Health

- Health Checks on Kensington and Chelsea Primary Care Trust, Chelsea and Westminster Foundation Trust and Imperial College NHS Trust
- Pan London Review of Trauma and Stroke Provision

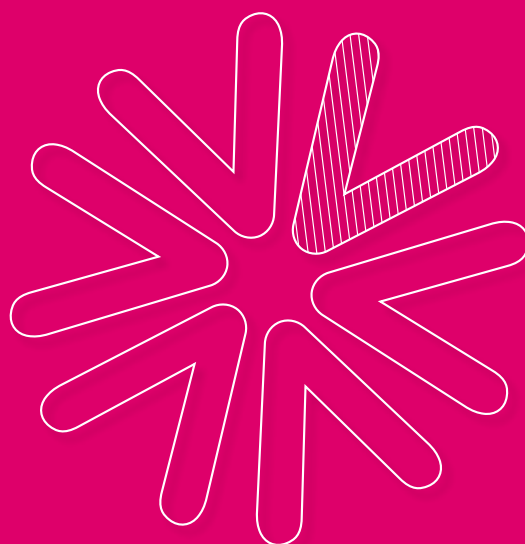
Family and Children's Services

- Secondary Provision in North Kensington
- Youth Provision
- Recruitment, Retention and Reward of School Leaders



Table of contents

Chairman’s Foreword	4
Cabinet and Corporate Services.....	6
Health.....	10
Housing, Environmental Health and Adult Social Care	14
Family and Children’s Services	18
Public Realm.....	22
Committee Membership.....	26
Contacts.....	28



Chairman's foreword



Councillor Christopher Buckmaster

>> **Chairman:** *Scrutiny Steering Group*

What is Scrutiny?

After eight years we still have to pose the question, as understanding of this crucial role still remains unclear for many of our residents. We used to be called Overview and Scrutiny, but this was such a mouthful that people's eyes glazed over before the title had even been completed.

Thus we now have the shorter title of Scrutiny, but our responsibilities and activities remain unchanged. These are best summed up in our strap line "Robust Review, Constructive Challenge".

Every democratic body needs to be scrutinised, as a check on what the Executive, in this case the Cabinet of the Royal Borough, is doing and to help make recommendations for future decisions.

The five Scrutiny Committees (SCs) of the Council are not controlled by the Executive, nor whipped by the political parties. Members on our committees or working groups work together, regardless of political affiliations. We

may criticise the Leader and Cabinet, although I like to think constructively and not destructively. Our ideas for future action are rigorously checked before we publicise them. They are not ignored. Many of our ideas are welcomed and then implemented.

Some examples of our work which have been recently accepted by Cabinet and implemented are listed below.

- **New secondary school in the North of the borough:** Following an earlier report on the need for a new school, the Academy funding route has been agreed and the size of the new school accepted.
- **Youth provision:** Greater priority is to be given to increasing weekend opening, and services to Looked After Children have been extended to age 24.
- **Retention and reward of school leaders:** A package of measures to welcome newly qualified teachers and encourage the development of new leaders in our schools has been accepted.

- **Equalities:** A rolling review of enhancing equality across Council activities has been undertaken, which has already led to substantial improvements in developing the Equality agenda.
- **Economy, efficiency and effectiveness:** The Cabinet and Corporate Services SC has established a working group which is seen as a ‘ginger’ group to deliver further value for money opportunities.
- **Worlington Green redevelopment:** Examination of proposals for the redevelopment of this estate, including a public meeting for residents to express their views and concerns.
- **Older people’s accommodation:** The report from this working group has been recognised as an imaginative response to the problems facing older people in the borough, with its findings being incorporated in the Council’s new housing strategy for older people.

We have a large and extensive programme for

study in the year ahead. It covers a very wide range of Council and Community activities. We are always ready to listen to members of the public for ideas or areas to be studied. We welcome fresh ideas. Qualified persons can be asked either to give evidence or to sit on one of our working groups.

We have an ever-open door and welcome public participation.

Ideas for new subjects to be scrutinised can be sent to us by letter, email, or via the Royal Borough’s website www.rbkc.gov.uk/scrutiny

We live up to “Robust Review, Constructive Challenge”. We provide the grist to the democratic process in the Royal Borough, with a continuing flow of new ideas for the benefit of all our residents.

Thanks are due to the Scrutiny Officers who support our work with dedication and great efficiency. Without them, little would be achieved.

“We live up to “Robust Review, Constructive Challenge””

>> Cllr Christopher Buckmaster



>> **Chairman:** *Councillor
Keith Cunningham*

Cabinet and Corporate Services Scrutiny Committee

“ The Working Group will continue to provide scrutiny and challenge in identifying further value for money opportunities across the Council... ”

Holding the Executive to account

The Scrutiny Committee (SC) does this in a number of ways. In the first instance, Cabinet Members for Service Improvement and Regeneration and for Corporate Services (Councillors Tim Ahern and Barbara Campbell respectively) regularly attend and submit reports to SC meetings.

Regeneration is a recent addition to Councillor Ahern's remit and he spelled out his current and future intentions in this area at the July 2009 SC meeting. By attending and presenting reports, members of the SC have the opportunity to question them on work undertaken in the past or plans they might have for the future.

Similarly, the Chief Executive and Town Clerk,

the Executive Director for Finance, Information Services and Property, and the Director for Strategy and Service Improvement also attend meetings, as does the Borough Commander (the latter on an annual basis).

Other ways in which this SC holds the Executive to account include regular scrutiny of:

- the Corporate Services Business Group's Outturn
- Corporate Services Revenue and Capital budgets
- the Corporate Annual Health report
- Performance Management information
- the Annual Cabinet Business Plan.

Working groups

A substantial amount of the work the SC carries out is

done by its working groups. A report of their activities is included below.

Scrutiny of Equalities

About 18 months ago the Council decided to pilot an innovative way of scrutinising its performance in relation to the equality agenda. In order to make the issue more meaningful and exciting, it was decided that a list of service priorities would be identified annually and SC Members would visit frontline services to test whether equalities issues were being addressed effectively.

Two Councillors undertake each review, having been given the background and information relating to the relevant service and advice on equalities. Following each review, a report is written and any concerns or recommendations are highlighted. These are considered at an SC meeting and agreed recommendations are raised with the relevant Cabinet Member. The recommendations are also fed back to the service manager and are either incorporated into the relevant service plan or implemented immediately.

A variety of services have been reviewed by Councillors including Holland Park and the Parks Police, North Kensington Leisure Centre, Lancaster Youth Centre,



Housing Advice Services Kensington and Chelsea, the Town Hall Customer Service Centre, Whistler Walk Children's Home and Portobello Road Market Office.

Some of the scrutiny work revealed excellent services with little or nothing to report by way of findings relevant to equalities, whereas others – notably the Scrutiny of the Lancaster Youth Centre, the Customer Services Centre, Whistler Walk Children's Home and the Portobello Market Office – resulted in recommendations for service enhancement being reported to the SC and the Executive.

This work has resulted in some significant achievements. For example, the recommendations relating to the scrutiny of Whistler's Walk Children's Centre were substantial enough for the matter to be proposed as an in-depth scrutiny by the Family and Children's Services SC. Following the Scrutiny of the Lancaster Youth Centre, the offer to Looked After Children and care leavers was expanded. Previously, the cut-off point for access to youth services was 19 years, the same as for all other young people. This has now been extended to match the age limit for young people with disabilities, 24 years.

Scrutiny of the Customer Service Centre has resulted in improved signage inside the building and more family-friendly waiting facilities. Those Customer Services Centre staff wishing to do so now wear a small flag designating their proficiency in languages other than English, leading to a more efficient delivery of services.

Given the success of the pilot scheme, it has been agreed that this approach to the scrutiny of equalities will be continued. Other London councils are now showing interest in this pioneering work.

Rape Prosecution

A working group comprising Councillors Blakeman, Atkinson, Borwick, Dr. Hanham, and Lamont has been working on this. Given the appointment of a new borough Crown Prosecutor, the working group has decided to postpone its final report to the September 2009 meeting which will give it enough time to meet the new Prosecutor.

Economy, Efficiency and Effectiveness

The group, consisting of Councillors Cunningham, Cox and Dalton met three times between April 2008 and March 2009. It has

reviewed key themes in the Council's agenda to maximise value for money. It was agreed that the group would be a 'ginger' group for the Smartest Council work being undertaken and has reviewed two presentations from the Town Clerk and Chief Executive.

It has also reviewed a presentation on the Space Programme (a programme related to the work environment and using space more effectively along with other improvements) and Business Process Improvement work (work which looks at systems and practices in detail and recommends more efficient ways of working) being undertaken by the Finance, Information Systems and Property Business Group. It has also examined the comments of the external auditors 2008 Use of Resources assessment and submissions on the Council's Annual Efficiency Statement and National Indicator 179 (Efficiency gains).

The working group will continue to provide scrutiny and challenge in identifying further value for money opportunities across the Council, ensuring both delivery of these and that the Council measures the value for money activities undertaken.



Economic Regeneration

This SC established a sub-group on Regeneration in September 2007 with a view to making recommendations to the Cabinet Member. To date, it has concerned itself with employment and training opportunities for local people. It regularly receives reports from officers with regard to local unemployment rates, training providers and a range of initiatives to stimulate employment and training. Its work is timely, given the recession and its impact in Kensington and Chelsea.

A recent report was tabled by the Town Centre Manager with particular regard to the local retail sector. It is planned to continue the work of the sub-group in 2009/10.

The Committee's future plans

Three working groups will continue their work next year. They are:

- Scrutiny of Equalities
- Economy, Efficiency and Effectiveness
- Economic Regeneration.

Possible working groups for 2009/10 include:

- Scrutiny of the Council's complaints procedure
- Scrutiny of the effectiveness of partnerships
- Scrutiny of two areas the Council did less well than it liked in the Place Survey:
 - The proportion of people who feel they can influence the Council is low
 - Emergency planning
- Scrutiny of the Policing Pledge (January to March 2010).

These possible areas for future scrutiny are subject to further consideration and the final list will be agreed by September. Residents have also been asked to submit ideas during the process via the Royal Borough newsletter and the Council's website.



>> **Chairman:** *Councillor
Christopher Buckmaster*

Health Scrutiny Committee

“ With great changes in healthcare across London, scrutiny has never been more important. ”



What the Committee did in 2008/09

This has been a busy year for Health scrutiny, dominated by the creation of the pan London Joint Health Overview and Scrutiny Committee (JHOSC), which I had the privilege of chairing. The purpose of the JHOSC was to consider the proposals from Healthcare for London to improve services for major trauma and stroke patients in the Capital by establishing specialist 24/7 centres – four for trauma and eight for strokes.

At the outset, the JHOSC successfully lobbied for the creation of four rather than three trauma centres, which should ensure that patients in North and West London will not have to go south of the river, to either Kings or St George's hospitals for treatment.

Over a three month period, the JHOSC interviewed 53 witnesses and the final report ran to 311 pages. The JHOSC approved the direction of travel, but had reservations over implementation of the proposals and their failure

adequately to address the whole of the care pathway, from immediate treatment through local hospitals and then into rehabilitation.

While these developments in pan London specialist care were being proposed, scrutiny of our local NHS has not stood still. Over the course of the year the Committee scrutinised plans by NHS Kensington and Chelsea (Primary Care Trust or PCT) to set up new vehicles for both the commissioning and the delivery of many local NHS services. A Commissioning



Alliance was originally proposed, made up of PCTs in Kensington & Chelsea, Hammersmith & Fulham, and Westminster. This has now been extended to cover all eight PCT areas in NW London.

The Committee was concerned that while the local PCT will still retain control over the local commissioning strategy and budgets, with local GPs remaining as budget holders for acute commissioning, the primary responsibility of the Commissioning Alliance could be to fulfil national commissioning requirements and meet national targets.

The Committee made known its concerns that benefits to our patients and residents were unclear and might jeopardise integration at a local level between our PCT and the Royal Borough.

Another proposal considered by the Committee was the creation of a Provider Alliance covering all activities of the Primary Care Trusts in the Royal Borough, Hammersmith & Fulham, and Westminster, other than commissioning e.g. home nurses and speech therapy etc.

In November 2008, the Committee received a presentation on the

operation of Practice Based Commissioning in the borough and the impact on patients of the resulting clinical developments. In May 2009, the Committee was consulted on the establishment of an Urgent Care Centre (UCC) at Chelsea and Westminster Hospital, which aims to improve the care received by people who need urgent but not emergency (or life threatening) care.

Our PCT will be getting a 10.6 per cent funding increase over two years, but it is unlikely that such increases can be expected in the future. The Committee

also discussed the PCT's Primary Care Strategy, which includes establishing the Urgent Care Centre at Chelsea and Westminster Hospital, a new primary care centre in Earl's Court, and the continuing redevelopment of St Charles Hospital.

The health of children and young people was a recurring feature in the Committee's deliberation. We are concerned over both the high levels of rising obesity in children – 12.4 per cent of children in our reception classes are classified as obese, with this number rising to 20.7 per cent at the age of 11 – and over the high levels of decayed, missing or filled teeth amongst children in the Royal Borough, which has one of the highest rates in London. In-depth studies into dentistry and childhood obesity have been established and will be reported on during 2009/10.

The Committee was pleased to note that the Local Information Network (LINK) has now been established and that LINK arrangements in the Royal Borough are considerably in advance

of many other boroughs. I was pleased to be able to welcome the Chairman of LINK to sit on the Health Scrutiny Committee.

The Committee also tracked the development of the Joint Strategic Needs Assessment (JSNA) over the course of the year, given its importance as a strategic tool for aligning health and social care services with the needs of borough residents. The Committee will act as a 'ginger group' to ensure that there will be a timetable for using the JSNA with a clear audit trail between

its findings and future commissioning decisions.

The Committee received an update on the progress being made in the Cabinet's Health Inequalities Action Plan and once again contributed to the Annual Health Check of NHS trusts in the borough, based on a survey of the Council's residents' panel. In its submission, the Committee made clear its unhappiness at the format of the Health Checks. We are pleased to learn that the decision has been taken to abolish the present Annual Health Checks.

What the Committee will do in 2009/10

The Committee will be keeping a close eye on NHS London's decision on stroke and trauma services and the implications this may have for the Royal Borough. The PCT has ambitious plans for creating new services, such as the local Urgent Care Centre and its new structures for commissioning and delivery. We will continue with our work on children's obesity and dentistry.



>> **Chairman:**
Councillor Mary Weale

Housing, Environmental Health and Adult Social Care Scrutiny Committee

“ The Committee has set up an in-depth review into illegal subletting of the Council's residential properties. ”

What the Scrutiny Committee did in 2008/09

Report on Older People's Accommodation in the Royal Borough

The Cabinet responded to this report, commending it as an imaginative response to the issues that older residents and their families had raised. In its response, the Cabinet undertook to:

- produce a housing strategy for older people
- develop a mixed economy of housing with support and care by reviewing the sheltered housing stock and developing extra care housing schemes which include housing for sale and shared ownership
- raise awareness of available services, housing and support options across all tenures.

Progress on the Procurement of Home Care Services

This was reported to the Scrutiny Committee in September 2008. The Committee praised Adult Social Care services for the calibre of communication

with service users about the proposed changes (particularly on the high quality of written communications). The Committee was briefed on the arrangements being made to support people on Individual Budgets to manage their own care.

The Mental Capacity Act 2005 and the Deprivation of Liberty Safeguards

The Committee received a report on the Council's preparations for taking on this significant new area of responsibility. The Act places additional duties on the local authority to ensure that adults in care homes who lack the mental capacity to consent to their treatment are additionally protected. The Committee heard that,

among other measures, the Council is planning to train social workers with a range of experience to become 'best interest assessors'.

Community Equipment and Minor Adaptations Service

The Committee congratulated this service on the positive results of its user survey. However, the Committee was disappointed to hear that recent guidance from the Department of Health may put a stop to the recycling of old equipment. The Committee expressed the hope that such recycling would continue to be encouraged and suggested that the service liaise with charities (including those working overseas) to try to prevent unnecessary waste.





Mental Health Day Services

In January 2009, the Committee discussed the Cabinet's proposals for changes to those mental health services which are directly provided and urged the service to consult service users more fully before finalising the proposals. As a result, a revised set of proposals were brought before the Committee later in the year. The Committee invited a representative from a local advocacy group to give his views, and asked to be kept informed about how these services evolved in the future.

Tenant Management Organisation

The Committee took an interest in developments at the Tenant Management Organisation (TMO) following a difficult year for the organisation.

The performance of the responsive repairs service and the TMO's improvement plan were scrutinised. In June 2009, the Committee welcomed Robert Black as the new Chief Executive, and expressed its appreciation of his determination to improve the performance of the TMO on all fronts – including repairs, voids, and rent arrears.

Review Group on Charging

The Review Group on Charging reported its findings and recommendations to the Committee in June 2009. The Review Group approached its work in the context of the Government's Personalisation agenda.

The Committee endorsed the Review Group's conclusions that service users should be required to make a contribution towards their personal budget (subject to a financial assessment) and that the contribution rate should be set at 100 per cent.

However, the Review Group had also presented some options for additional assistance to residents and suggested that consideration should be given to either:

- setting a weekly limit to the level of contribution, e.g. £400 a week
- increasing the Capital limit from £35,000 within the financial assessment
- amending the financial assessment to allow service users a greater allowance resulting in a higher level of income being retained by the service user.

The Committee agreed to take a continuing interest in designing a consultation strategy with service users on these proposals.

Review Group on Illegal Subletting

The Committee has set up an in-depth review into illegal subletting of the Council's residential properties. The Review Group has been working closely with the Council's Investigations Team to test different ways

of identifying properties that have been illegally sublet. It has also been looking at how evidence is collected to establish unauthorised occupancy of Council properties and how it is used in subsequent proceedings. The review is expected to report by the end of 2009.

Housing Allocation Scheme

The Committee had contributed to the development of the Royal Borough's current Housing Allocation Scheme, which was implemented from July 2007. A scoping report on a review of this scheme was brought before the Committee in January

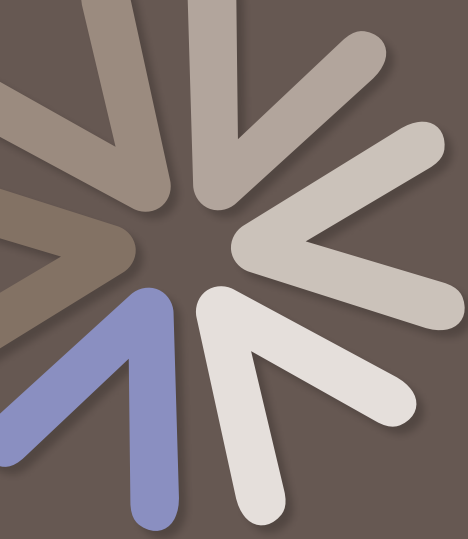
2009 and the Committee expressed the view that the importance of local residents' points should not be diminished.

Stock Options Review

The Committee was updated by the Deputy Leader of the Council on progress with the Housing Stock Options Review. The Committee was informed that the formal consultation process on the options was concluded and that three feasibility studies were being undertaken to inform the estate regeneration option under consideration. The Committee agreed to return to this subject when the review is complete.

What the Scrutiny Committee will be doing in 2009/10

The Committee will continue to monitor the performance of the Tenant Management Organisation and take an interest in the delivery of its Improvement Plan. The work of the Review Groups on Illegal Subletting, the Taxi Card Scheme, and on Information for Social Service clients will be reported to the Committee. The progress of the Housing Options Review will continue to be tracked.



>> **Chairman:**
Councillor Elizabeth Campbell

Family and Children's Services Scrutiny Committee

“ ...the Working Group considered whether a new school should be developed, and if so, the type of school envisaged, its location and how it would be funded. ”

I became Chairman of this committee in May 2009 and, as a result, this section of the Scrutiny Annual Report reflects the achievements of my predecessor, Councillor John Cox, who chaired this committee for the last three years. I set out some of my plans for the next year at the end of this section.

Holding the Executive to account

The Family and Children's Services Scrutiny Committee (FCS SC) does this in a number of ways. Cabinet Members for Family and Children's Services and for Education and Libraries (Councillors Shireen Ritchie and James Husband respectively) regularly submit reports to and attend SC meetings.

Members of the SC question them on work undertaken in the past or plans they might have for the future. Similarly, the Executive Director for Family and Children's Services also regularly attends SC meetings.

Other ways in which this SC holds the Executive to account include regular scrutiny of:

- the Family and Children's Services Business Group's Outturn, Revenue

and Capital budgets in November and February

- Performance Management information
- the Annual Cabinet Business Plan
- the Annual Performance Assessment of Services for Children and Young People.

Examples of other matters which the SC kept an eye on:

- the Parenting Strategy
- placement stability of Looked After Children
- Chelsea Academy
- the shielding of child records in Contactpoint.

In light of the recent tragic death of a child in the London Borough of Haringey, the SC reviewed a report which set out the Royal Borough's approach to child protection, what standards it expected and what fail-safe mechanisms were in place for child protection.

A summary of the work done by the SCs working groups is included below:

Secondary Provision in North Kensington

This working group was made up of Councillors Johnson (Chairman), Atkinson, Campbell and Levitt, as well as Mr Taylor (one of the co-opted members of the SC), and considered the development of a new school in the North of the borough.

This subject was chosen because the currently unbalanced and inadequate pattern of secondary provision in the Royal Borough means that over half of the borough's children do not get their first choice of schooling. (Nationally over 90 per cent get their first choice.) Furthermore, of the 660 resident pupils in the secondary transfer each year, only about 300 of these (45 per cent) get a school place in the Royal Borough at all.





In light of this, the working group considered whether a new school should be developed, and if so, the type of school envisaged, its location and how it would be funded. Cabinet agreed with the working group's recommendations that the Council should sponsor an Academy and that it should look for an appropriate academic co-sponsor. Cabinet also agreed that Building Schools for the Future funding should be used to fund the process and the application for the initial money should be made as soon as possible.

The SC will follow the progress of the new school in the North of the borough closely, as the Council obtains government approval for the initial funding and as it settles on a suitable co-sponsor.

Youth Provision

Following a motion to full Council in April 2008 which

called into question the funding and performance of youth support services within the Royal Borough, a working group was formed to examine the workings of the Royal Borough's Youth Support and Development Service (YSDS).

It comprised Councillor David Lindsay (Chairman), Councillor Catherine Atkinson, Mr John O'Donnell and Mr Zino Benatia. The working group undertook a review of the policy, practice and effectiveness of YSDS, as well as its financial underpinning.

Cabinet agreed the working group's recommendations that the impact and risks of projected funding shortfalls should be set out and that the process of applying to the Council for funding should be further streamlined.

YSDS should make opening at weekends a priority and it should look at the activities

open to ten to 13 year olds. Services that can be accessed by Looked After Children should be extended to age 24.

Recruitment, Retention and Reward of School Leaders

This working group, comprising Councillors Mills (Chairman), Borwick, Professor Coates, Condon-Simmonds, Daley (Lead Member) and Lasharie, as well as co-opted members Dr Al Zaher and Mr Parsons, submitted its final report to this SC and Cabinet during June/July 2009.

Some of the recommendations contained in the report are already being implemented. A 'welcome' event for all new school staff has been planned for September; a booklet will be produced describing current benefits; and Newly Qualified teachers will be invited to the Mayor's Parlour on an annual basis.

Pupil Referral Unit/Latimer Education Centre and alternative provision

Chaired by Councillor Cox and comprising Councillors Dalton and Lasharie as well as Mr O'Donnell, a co-opted member of the SC, this working group will continue its work next year.

Libraries Transformation Programme – Joint Cabinet/SC

This is a joint working group, made up as follows:

- **Cabinet-side:** Councillors Husband (Chairman), Campion and Lightfoot
- **SC-side:** Councillors Campbell, Cox and Cunningham.

It continues to monitor the progress of the Libraries Service Transformation Programme, the

improvements made to the service offer, and the impact on performance and use.

Other work groups

Members of the FCS SC also participated on two of the Health SC working groups – Councillor Professor Coates served on the Dentistry working group and Councillor Condon-Simmonds served on the Obesity working group.

The way forward: Plans for 2009/10

Some of the topics which the SC might look at more closely next year include:

- assessing children's homes and their resourcing
- assessing the possible impact of funding cuts (as a follow up to the youth provision working group)
- conducting a service mapping exercise to identify unit costs and compare costs with services in other boroughs
- reviewing the actual outcomes of extended schools.

As well as taking an in-depth look at some of the issues listed above, the scrutiny role of the committee will be further strengthened by a more efficient use of its time. Themed meetings could provide a stronger emphasis on focus and analysis:

- September's meeting – the Children and Young People's Plan
- November's meeting – performance results from schools and the budget
- January's meeting – budget papers and annual corporate performance
- March's meeting – Safeguarding Board and Children's Trust issues.

Themed meetings would not preclude discussion of other pressing matters unrelated to the theme.

Finally, Holland Park School still requires this committee's close attention and a special meeting will be held on the 19 October 2009 to consider a major Cabinet report. This is the point at which all the main decisions will be taken on the future of the project: construction of the new school, appointment of the contractor, sale of the southern site to a particular developer, and the method of procurement of the affordable housing. The SC will need to take a close look at these matters.



>> **Chairman:**
Councillor Mrs. Frances Taylor

Public Realm **Scrutiny Committee**

“ ...the SC also scrutinised the Opera Holland Park, Notting Hill Carnival and the Exhibition Road and South Kensington projects. ”

Holding the Executive to account

The Scrutiny Committee (SC) does this in a number of ways. In the first instance, Councillor Daniel Moylan, Deputy Leader and Cabinet Member for Planning Policy and Housing Policy, and Councillor Nicholas Paget-Brown, Cabinet Member for Transportation, Environment and Leisure, regularly submit reports to and attend SC meetings. In this way, members of the SC question Cabinet Members on work undertaken in the past, or plans they might have for the future. Similarly, the Executive Directors for Transport, Environment and Leisure Services and for Planning and Borough Development also attend SC meetings.

Other ways in which this SC holds the executive to account include regular scrutiny of:

- the Transport, Environment and Leisure Services and Planning and Borough Development Business Group's Outturn, as well as their Revenue and Capital budgets

- Performance Management information
- the Annual Cabinet Business Plan.

Besides the regular items mentioned above, the SC also scrutinised the Opera Holland Park, Notting Hill Carnival and the Exhibition Road and South Kensington projects.

Much of the work done by SCs is done in smaller working groups and the work which this SC has done during the course of this year is summarised below.

Working groups

Wornington Green Estate – examining the case for redevelopment

Plans to redevelop the Wornington Green Estate in North Kensington were exhaustively considered by my SC. In order to do the matter justice, a sub-committee which I chaired, comprising Councillors Paul Warrick, Rock Feilding-Mellen and Judith Blakeman, was formed.

A public meeting was held in November 2008, giving the sub-group an opportunity to listen to residents' views on the proposals, as well as take evidence from the trust and an independent financial consultant appointed by the Council.

That meeting and a previous consultation with residents led to the sub-group producing a number of





recommendations which were considered by the full SC at the end of January 2009. The recommendations included suggesting that the Council made available some of its own land to cut the time it would otherwise take to redevelop the area.

In my capacity as Chairman of the working group and the SC, I addressed Cabinet and advised that, with the exception of Councillor Blakeman, all members of the Public Realm SC were in agreement with the recommendations in the report.

Cabinet accepted these recommendations, agreeing that the Council enter into negotiations with Kensington Housing Trust and the Venture Community Association, (taking into account the principles set out in paragraph six of the sub-group's report), and that heads of terms be agreed for the disposal and acquisition of land and buildings to relocate the Council's freehold interest in Athlone Gardens and the Venture Centre.

The SC will continue to keep a watchful eye over future developments.

Leighton House

This working group was established to investigate the quality of work done as part of the second phase of works to Leighton House. It comprises myself as Chairman of the SC, Councillors Corbet-Singleton, Feilding-Mellen and O'Neill, and is chaired by Councillor Lamont.

Given the extensive workload of the SC as a whole, this working group has only recently begun its work and it will form part of next year's work programme. Following a first meeting to scope

the work, it is envisaged that it will produce an interim report to the SC and a final opinion once the works are completed.

At this stage, a subsequent, open meeting for the Friends of Leighton House is envisaged to afford them the opportunity to express their ambitions and wish list for phase three of the project. It is also envisaged that at least one further meeting will be needed to consider the views of any other groups who have an interest in the museum, such as the Kensington and Chelsea Music Society; representatives from groups supporting the disabled; the Council's Education Department; and catering companies.

Following this, the working group will be in a position to submit a final report.

Other notable activity

Climate Change Seminar

In a bid to ensure the Council is tackling environment issues head-on, I chaired a SC seminar which gave Members the opportunity to question top science specialist, Dr Stephan Harrison, on green issues and climate change topics.

It was an opportunity for the SC to question the expert, whose interests lie in mountain geomorphology and business responses to and understandings of, climate change, to ensure that the SC remains fully aware of anything which could affect the services the Council delivers.

The meeting was very well-attended by Councillors, officers and other interested parties, leading to a lively debate on the causes and impact of climate change more generally and also what impact could be expected on London and the Royal Borough.

The debate clarified a number of issues relating to the Council's Climate Change

Strategy, all of which will stand it in good stead as the SC monitors its progress and development.

Webcasting

Following the success of the first webcast of a Scrutiny public meeting which I chaired to consider flooding in the Royal Borough, the public meeting on the Wornington Green redevelopment was also webcast. This can be viewed on the Council's website at www.rbkc.gov.uk/scrutiny

It is my intention to ensure that, wherever feasible, this committee's public meetings be webcast in order to ensure increased public access to the discussions.

Plans for the future

At present, my committee has plans to consider the position of post offices along with the sorting offices in the Royal Borough, as well as the legacy of the 2012 Olympics around sports and physical activity and the festival on Exhibition Road.

Scrutiny Committee membership

Scrutiny Steering Group

Councillors:

- Christopher Buckmaster (Chairman)
- Elizabeth Campbell
- Keith Cunningham
- Frances Taylor
- Mary Weale

Cabinet and Corporate Services

Councillors:

- Judith Blakeman
- Fiona Buxton
- David Campion
- Keith Cunningham (Chairman)
- Ian Donaldson
- Priscilla Frazer
- Baroness Hanham
- David Lindsay
- Barry Phelps (Vice Chairman)

Health

Councillors:

- Christopher Buckmaster (Chairman)
- Terence Buxton (Vice Chairman)
- Maighread Condon-Simmonds
- John Cox
- Emma Dent-Coad
- Robert Freeman
- Dr. Iain Hanham
- Pat Mason
- Matthew Palmer

Family and Children's Services

Councillors:

- Catherine Atkinson
- Victoria Borwick
- Elizabeth Campbell (Chairman)
- Sir Anthony Coates (Vice Chairman)
- Maighread Condon-Simmonds
- Andrew Dalton
- Dominic Johnson
- Mushtaq Lasharie
- Bryan Levitt

Co-opted voting members:

- Dr. Samar Al-Zaher (parent governor)
- John O'Donnell (Roman Catholic Diocesan Board of Education) and
- The Reverend William Taylor (London Diocesan Board for Schools)

Co-opted non-voting members:

- Keiran Parsons (teacher)
- Kathleen Williams (head teacher)

Housing, Environmental Health and Adult Social Care

Councillors:

- Christopher Buckmaster
- James Cecil
- Emma Dent-Coad
- Jeremy Edge
- Bridget Hoier
- Tony Holt (Vice Chairman)
- Quentin Marshall
- Matthew Palmer
- Mary Weale (Chairman)
- Charles Williams

Public Realm

Councillors:

- Judith Blakeman
- John Corbet-Singleton
- Mark Daley
- Rock Feilding-Mellen
- Andrew Lamont
- Dez O'Neill
- Frances Taylor (Chairman)
- Paul Warrick (Vice Chairman)
- Doreen Weatherhead

Contacts

This report and more information about all aspects of the work of Scrutiny can be found at www.rbkc.gov.uk/scrutiny or by contacting:

- **Clive Mentzel**
Scrutiny Development Manager
(Cabinet and Corporate Services, Family and Children's Services and Public Realm SCs)
Telephone: 020 7361 3494
Email: clive.mentzel@rbkc.gov.uk
- **Ahmed Farooqui**
Scrutiny Development Manager
(Health and Housing, Environmental Health and Adult Social Care SCs)
Telephone: 020 7361 2987
Email: ahmed.farooqui@rbkc.gov.uk
- **Address for correspondence**
Royal Borough of Kensington and Chelsea
Policy and Partnerships Unit
Room 248
Hornton Street
London W8 7NX
- **Website**
www.rbkc.gov.uk/scrutiny

