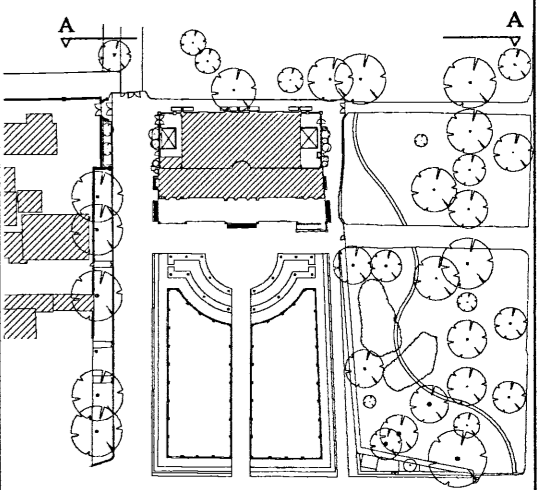
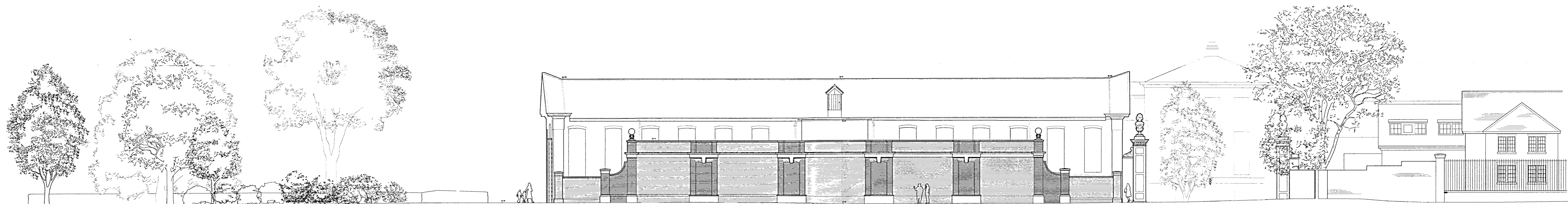


NOTES:



KEY PLAN



PROPOSED ELEVATION OF SITE FROM NORTH (TREES IN FRONT NOT SHOWN)

STATUS: PLANNING

REV DATE AMENDMENT

CLIENT:

HISTORIC ROYAL PALACES

PROJECT:

KENSINGTON PALACE  
ORANGERY YARD

LIAM O'CONNOR  
ARCHITECTS  
AND PLANNING CONSULTANTS

75 COWCROSS STREET  
LONDON EC1M 6EL

TEL.NO: 0207 250 1983  
FAX.NO: 0207 251 6310

E-MAIL: info@liamoconnor.com

DRAWING TITLE:

PROPOSED SITE ELEVATIONS,  
NORTH

SCALE: 1:200@A1 DATE: 16.12.2016 DRAWN: CHECKED:

DRAWING NUMBER: KPO-PL-13.3 REVISION: -

