

Drawing based upon measured survey information provided by Meon Survey Partnership. The design and associated areas are subject to change following receipt of more detailed site information and consultant input.

Internal layouts and areas noted are indicative only. They are subject to detailed design development by consultants, subcontractors elemental design, site construction and site tolerance.

The final areas can only be checked by a surveyor appointed by the client upon completion of construction.

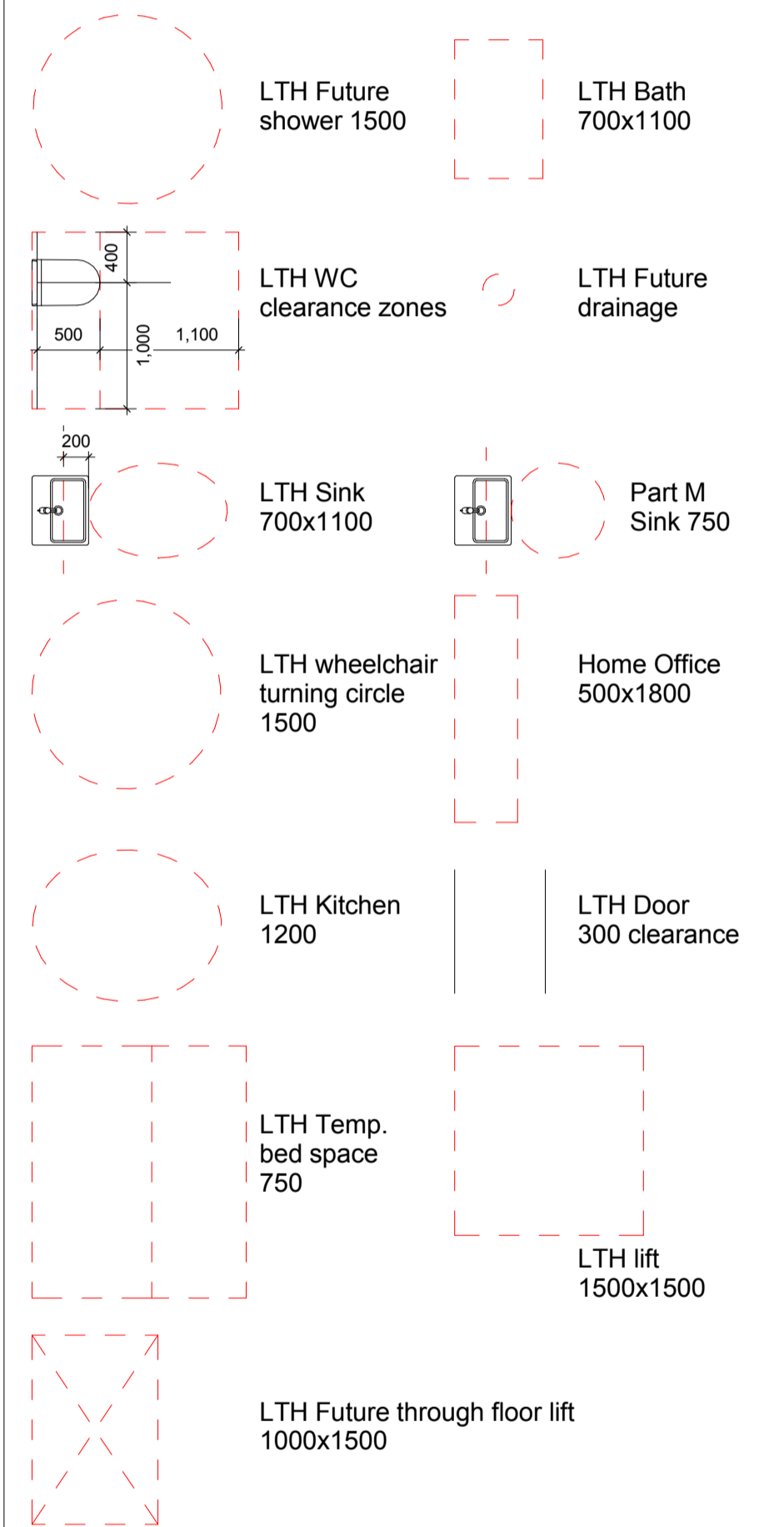
Lifetime Homes (LTH) compliance is shown in red.



LEGEND:

- Existing Fabric
- Proposed Fabric

CLEARANCE ZONES:



KEY PLAN - NOT TO SCALE

