

NOTE:

Drawing based upon measured survey information provided by Meon Survey Partnership. The design and associated areas are subject to change following receipt of more detailed site information and consultant input.

Internal layouts and areas noted are indicative only. They are subject to detailed design development by consultants, subcontractors elemental design, site construction and site tolerance.

The final areas can only be checked by a surveyor appointed by the client upon completion of construction.

Lifetime Homes (LTH) compliance is shown in red.

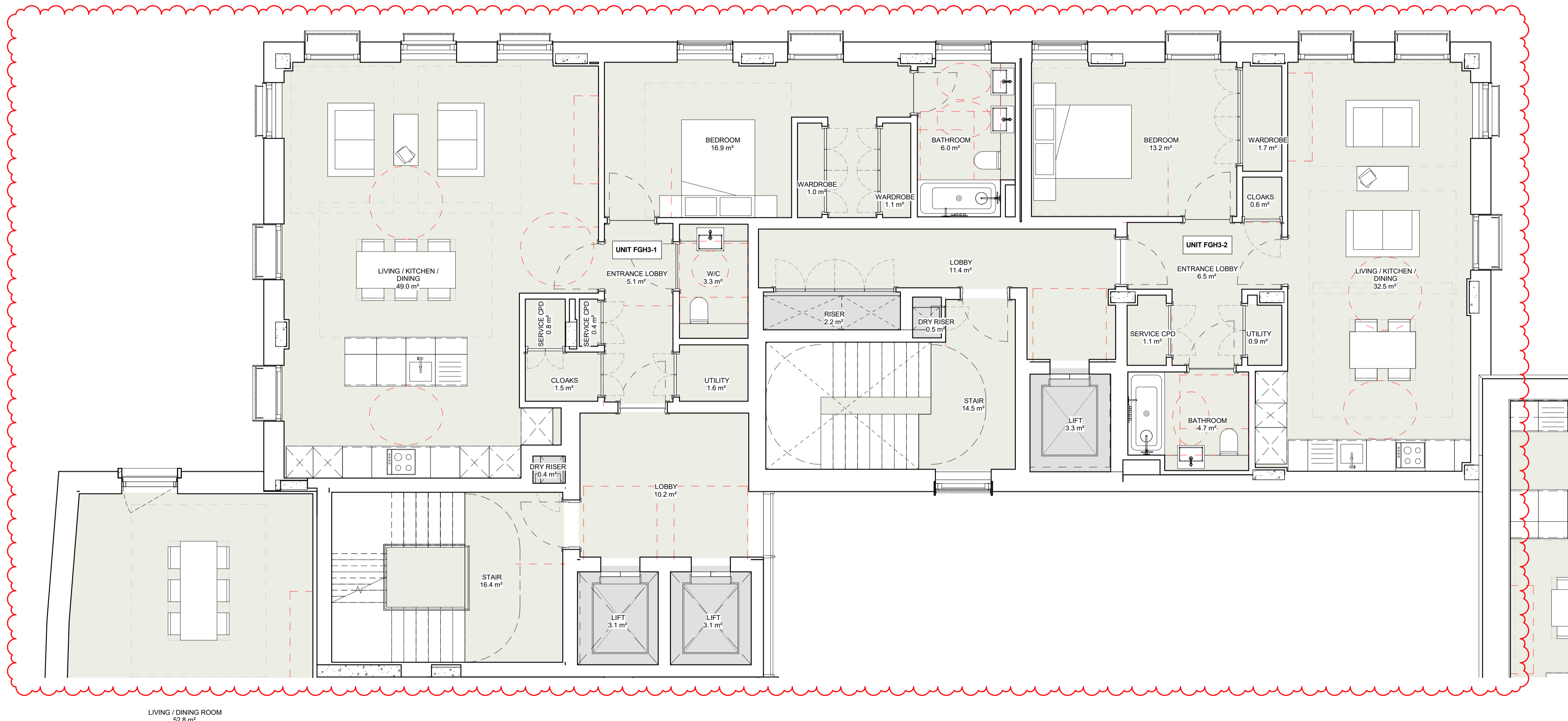
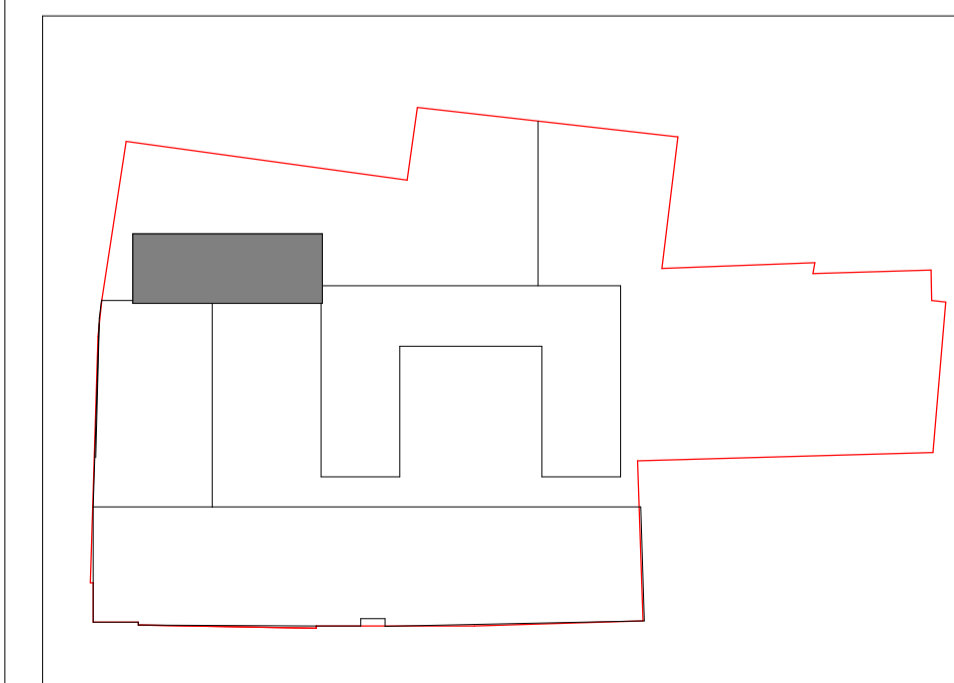
LEGEND:

- Existing Fabric
- Proposed Fabric

CLEARANCE ZONES:

- LTH Future shower 1500
- LTH Bath 700x1100
- LTH WC clearance zones
- LTH Future drainage
- LTH Sink 700x1100
- Part M Sink 750
- LTH wheelchair turning circle 1500
- Home Office 500x1800
- LTH Kitchen 1200
- LTH Door 300 clearance
- LTH Temp. bed space 750
- LTH lift 1500x1500
- LTH Future through floor lift 1000x1500

KEY PLAN - NOT TO SCALE



LIVING / DINING ROOM
52.8 m²