



**NOTE:**

Drawing based upon measured survey information provided by Meon Survey Partnership. The design and associated areas are subject to change following receipt of more detailed site information and consultant input.

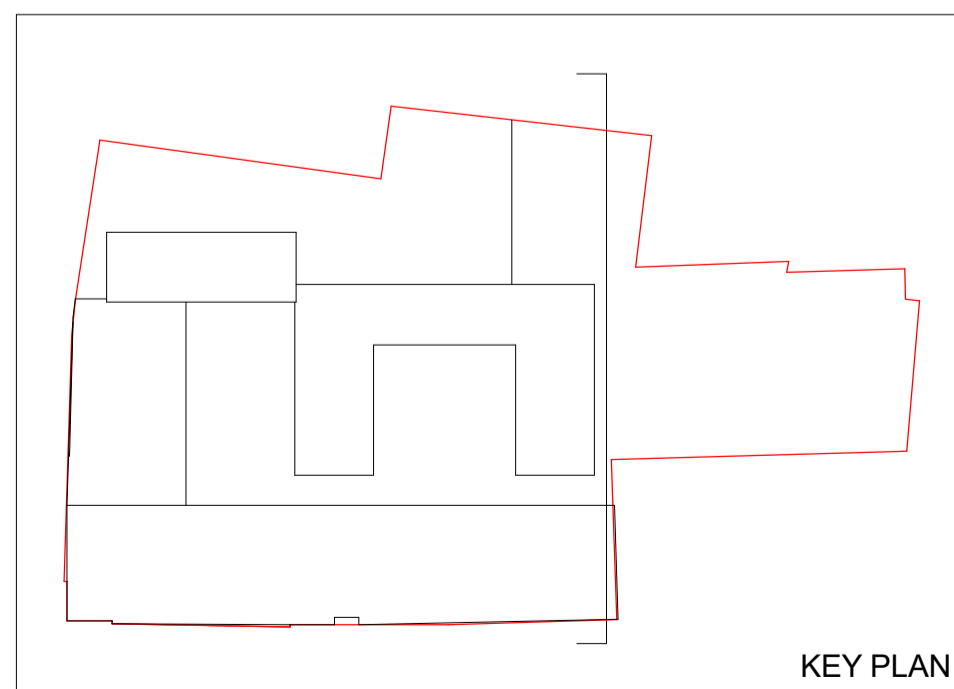
Internal layouts and areas noted are indicative only. They are subject to detailed design development by consultants, subcontractors elemental design, site construction and site tolerance. The final areas can only be checked by a surveyor appointed by the client upon completion of construction.

Materials and details shown are for indicative purposes only. Details of materials and colours are subject to planning condition discharge.

**LEGEND:**

- Existing Fabric
- Proposed Fabric

- 1 Existing stone and detailing to be cleaned and repaired as necessary
- 2 Stone facade at ground floor to be replaced with new Portland stone cladding
- 3 Reconstituted stone plinth block.
- 4 Rendered white insulated wall
- 5 Existing canopy to be replaced with new anodised aluminium cladding to shopfront canopy
- 6 Existing wall to be over-clad and re-aligned to match building line above
- 7 Existing windows to be replaced with new metal tilt and turn windows
- 8 Existing windows replaced to match existing
- 9 Opaque panel within new glazing frame
- 10 Powder Coated metal framed glazing with art deco detailing, bottom 2 no. horizontal panels to be opaque
- 11 Brickwork facing - grey/black speckled brick
- 12 Brickwork facing - multicoloured red brick
- 13 Brickwork facing - multicoloured buff brick
- 14 Glazed brick facing - dark grey in colour Stone banding to section above shopfront.
- 15 Glazed brick facing - coloured bricks to approval. Stone banding to section above shopfront
- 16 Rendered white facade to brick substrate
- 17 Portland stone parapet
- 18 Decorative Portland stone panel - final design to RBKC approval
- 19 Glass balustrading
- 20 Retractable fabric awning - plain solid coloured
- 21 Anodised aluminium briese soleil
- 22 Entrance canopy - anodised aluminium
- 23 Glazing - powder coated metal framed commercial glazing
- 24 Glazing - powder coated metal framed residential glazing
- 25 Glazing - timber frame with decorative Portland stone reveal, head and cill detail
- 26 Glazing - metal frame with decorative Portland stone reveal, head and cill detail
- 27 Glazing - metal frame with decorative Portland stone reveal, head and cill detail
- 28 Glazing - shop fronts, refer to shopfront strategy document
- 29 Glazing - anodised aluminium curtain walling, opaque panels at each floor level
- 30 Decorative panel - stone
- 31 Decorative panel - metal
- 32 Decorative panel - metal with Gaumont Palace motif
- 33 Glazing - anodised metal framing with vertical louvres
- 34 Metal cladding - horizontal profile, terre coated stainless steel or similar
- 35 Metal cladding - vertical profile with traditional lead detailing
- 36 Metal cladding - lead window surround
- 37 Plant - acoustic louvre plant enclosure (beyond) powder coated
- 38 Line of proposed elevation shown dotted behind
- 39 Brickwork facing - soft grey speckled brick
- 40 Decorative shopfront ventilation grille with Gaumont Palace motif
- 41 Glazing - anodised aluminium curtain walling
- 42 Glazing - metal clad roof lights, turn coated steel or similar
- 43 Glazed entrance doors and side/top lights within Portland stone surround
- 44 Entrance to rooftop bar/restaurant within stone surround
- 45 Blind window with decorative Portland stone reveal, head and cill detail
- 46 Portland stone rainscreen clad facade
- 47 Decorative metal railings
- 48 Flues
- 49 New metal tilt and turn windows to match existing
- 50 Anodised aluminium protruding window surround
- 51 Solid doorset



KEY PLAN