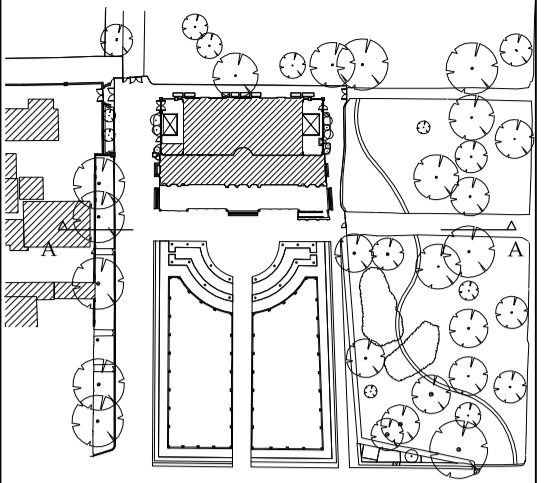
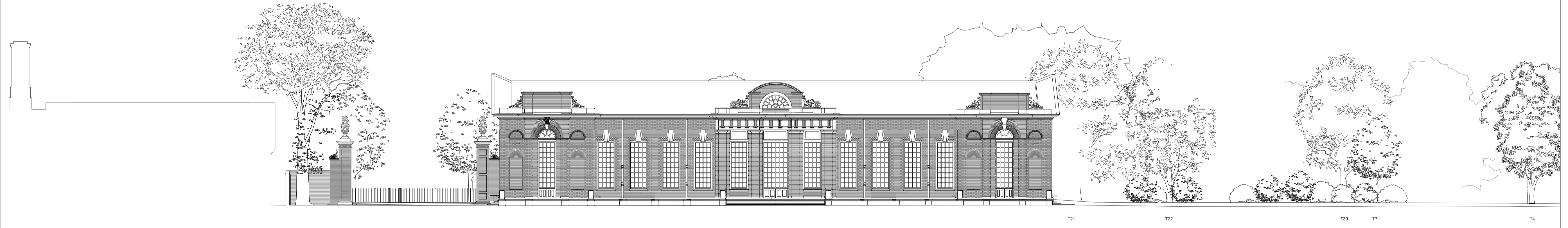


NOTES:

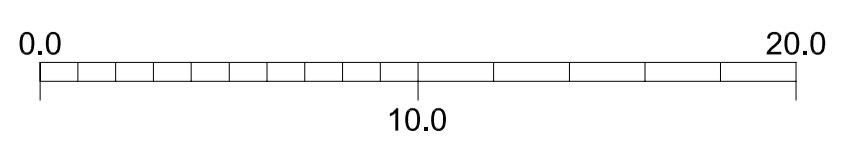


KEY PLAN



T21 T22 T39 T7 T4

PROPOSED ELEVATION OF SITE FROM SOUTH



STATUS: PLANNING

REV	DATE	AMENDMENT

CLIENT:  
HISTORIC ROYAL PALACES

PROJECT:  
KENSINGTON PALACE  
ORANGERY YARD

**LIAM O'CONNOR**  
ARCHITECTS  
AND PLANNING CONSULTANTS

75 COWCROSS STREET  
LONDON EC1M 6EL

TEL.NO: 0207 250 1983  
FAX.NO: 0207 251 6310  
E-MAIL: info@liamoconnor.com

DRAWING TITLE:  
PROPOSED SITE ELEVATION  
SOUTH

SCALE:	DATE:	DRAWN:
1:200@A1 1:400@A3	16.12.2016	CHECKED:

DRAWING NUMBER:	REVISION:
KPO-PL-13.1	-