



**BIKES PARKING**

BASEMENT 1: 68 STANDARD CYCLE SPACES  
 BASEMENT 2: 62 BIKE AND 6 ACCESSIBLE BIKE SPACES  
 136 TOTAL

**SCOOTERS PARKING**

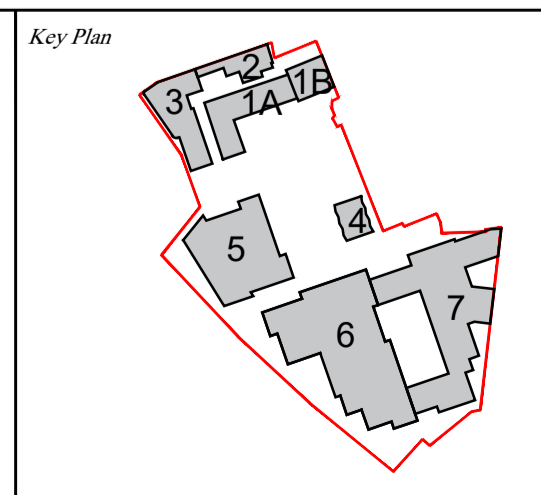
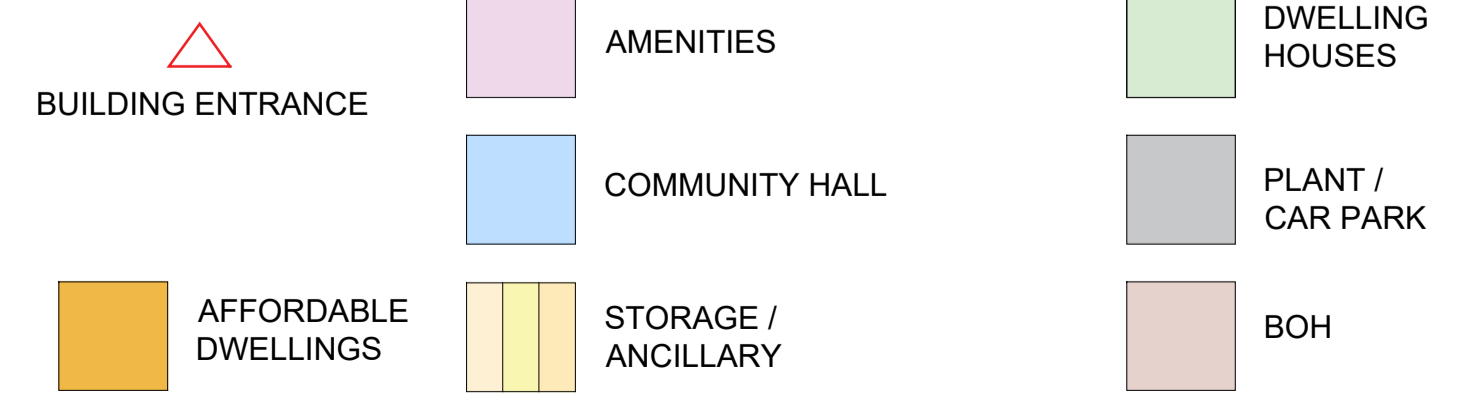
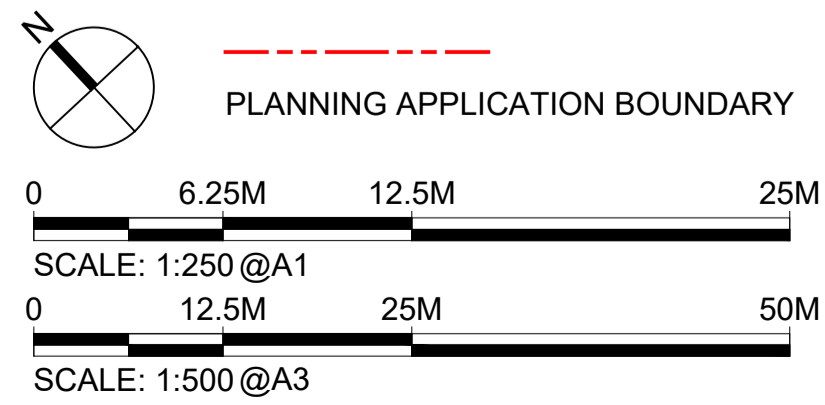
BASEMENT 1: 2 ACCESSIBLE SCOOTER SPACES  
 BASEMENT 2: 26 ACCESSIBLE SCOOTER SPACES  
 28 TOTAL

**CAR PARKING**

27 CAR PARKING SPACES (20 ACCESSIBLE AND 7 STANDARD) IN B2



Use of Kohn Pedersen Fox Associates' files ("Files") is subject to acceptance of the following disclaimer. Users must not scale drawings; written dimensions govern. All dimensions are in millimetres unless otherwise stated. Files are provided for users' reference only and revisions to Files may be issued from time to time. KPF makes no warranty of any kind, express or implied, with respect to the Files. Files must be independently checked by users to ensure adequacy for any particular purpose. Users must immediately notify KPF in writing of any discrepancies. KPF does not accept any duty of care to users and excludes all liability due to their use of Files. Users agree to indemnify KPF against any loss arising from their use of Files.



No.	Issue	Date
0	PLANNING APPLICATION	SEP /2018

**Kohn Pedersen Fox Associates (International) PA**  
 Architects and Planning Consultants

7A Langley Street  
 London WC2H 9JA England  
 T: +44 (0) 20 3119 5300  
 F: +44 (0) 20 7497 1175  
<http://www.kpf.com>

Proj. No.	2648	Project	HEYTHROP COLLEGE
Scale	1:250 @ A1 1:500 @ A3	Drawn by	KPF
Checked by	PF		
Drawing Title	PROPOSED BASEMENT 1 PLAN		
No.	<b>PA-099</b>	Rev.	0

© 2018 KOHN PEDERSEN FOX ASSOCIATES PC. All rights reserved.