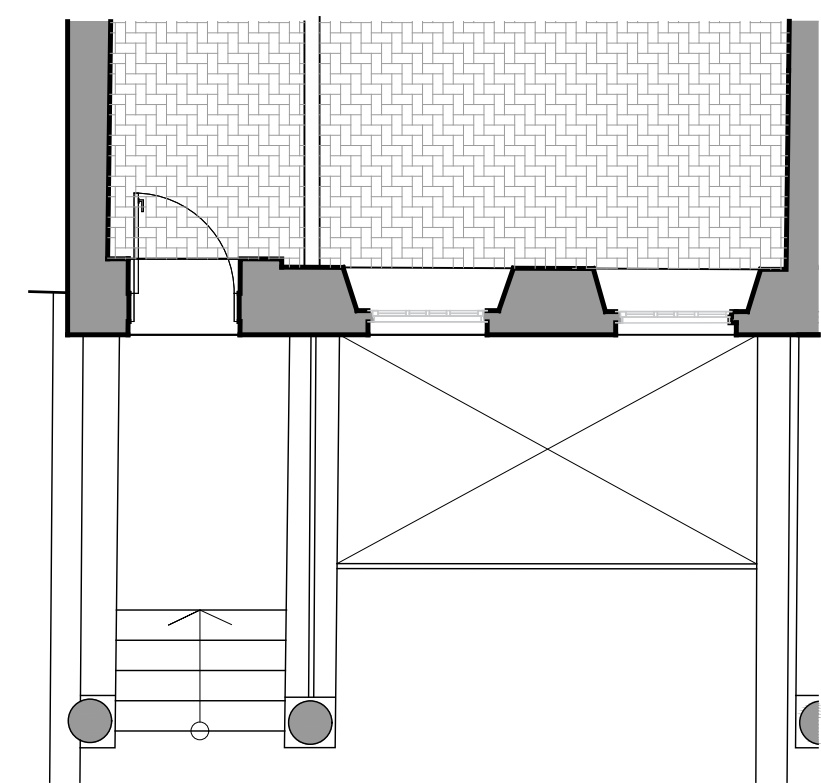
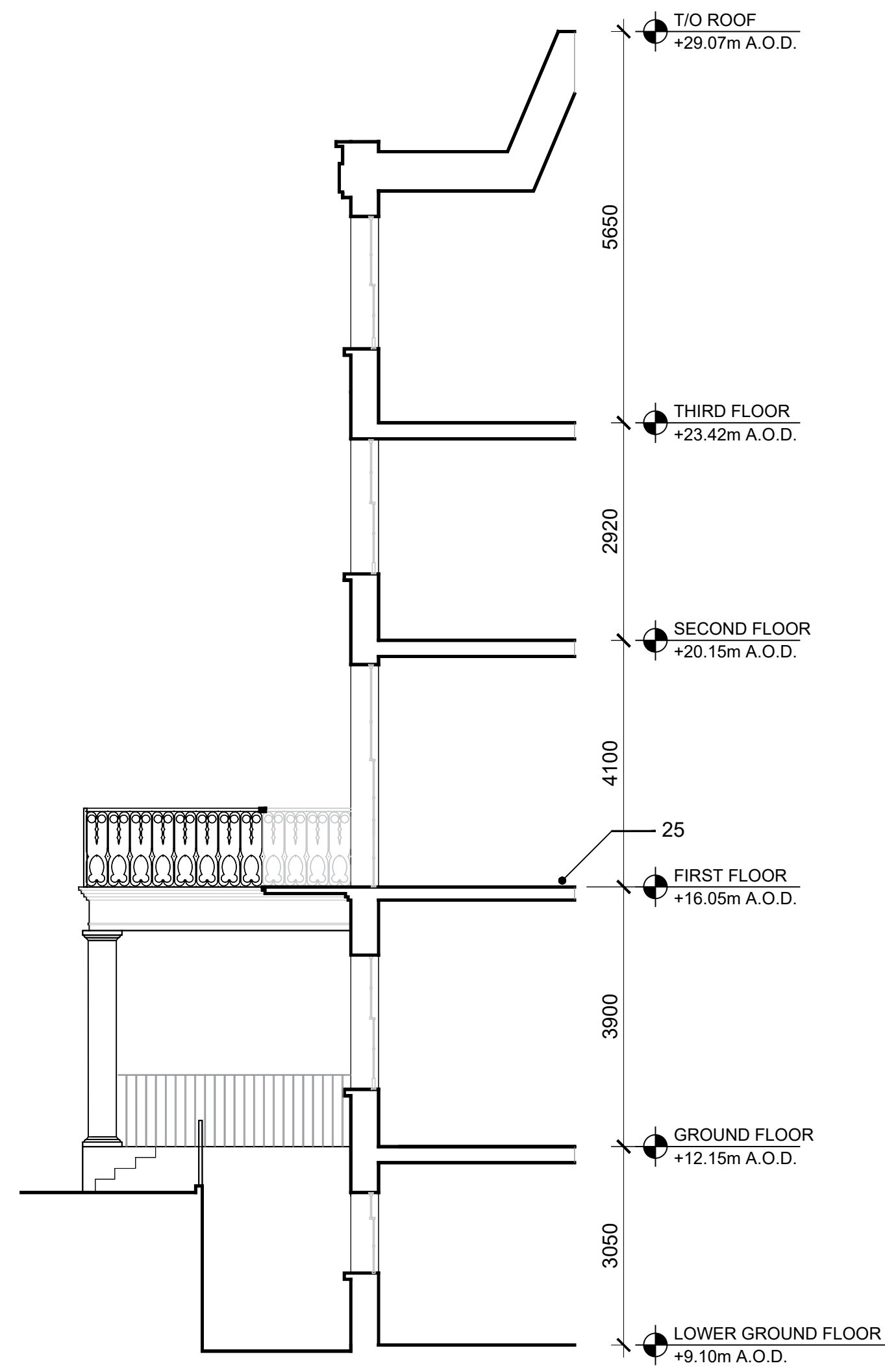


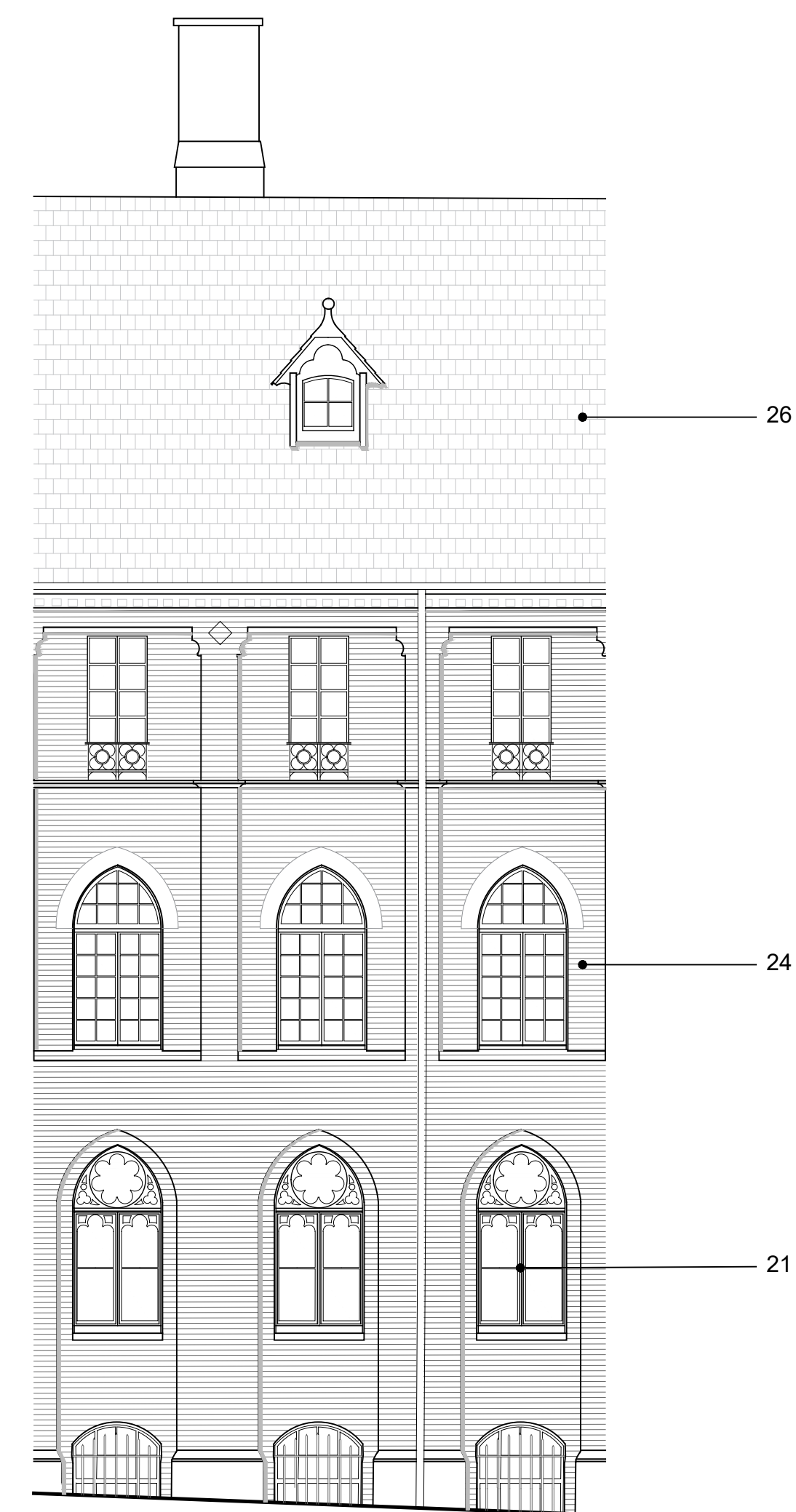
1 BUILDING 1B ELEVATION
SCALE: 1:75



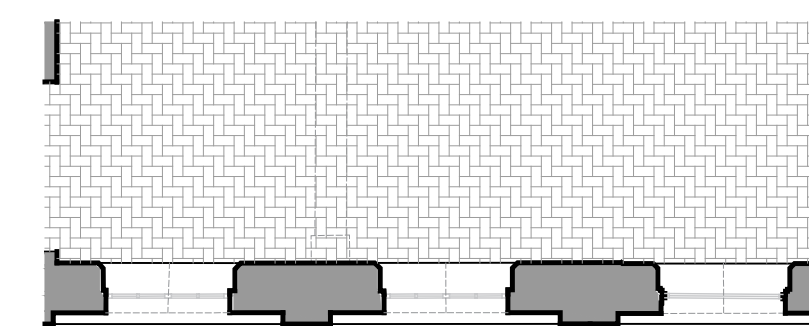
2 BUILDING 1B GROUND PLAN
SCALE: 1:75



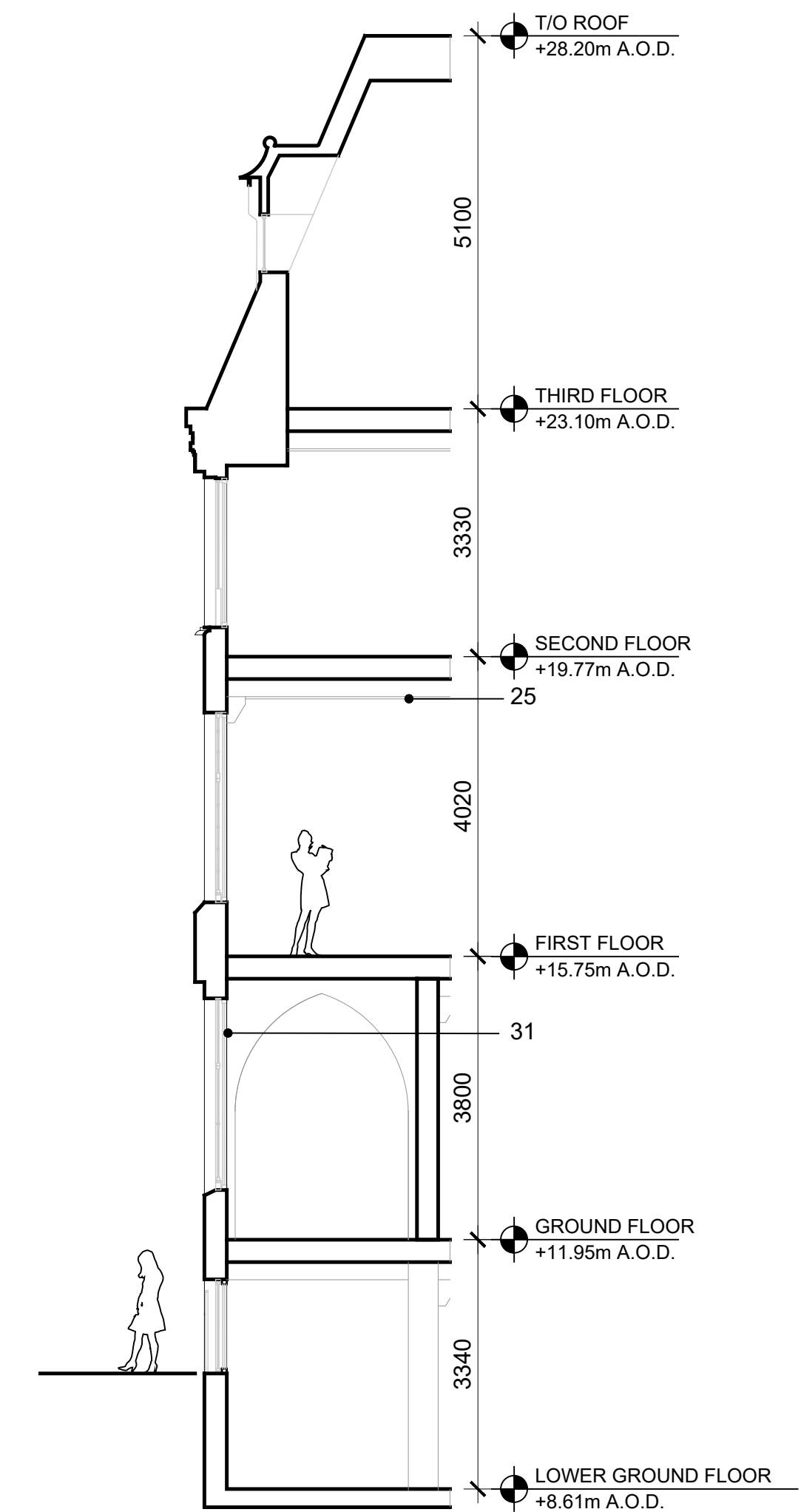
3 BUILDING 1B SECTION
SCALE: 1:75



4 BUILDING 1A ELEVATION
SCALE: 1:75



5 BUILDING 1A TYPICAL PLAN
SCALE: 1:75



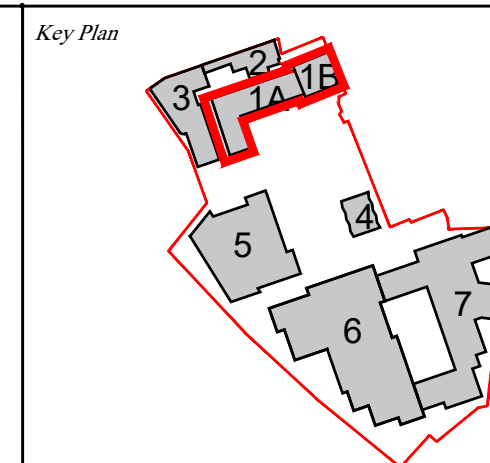
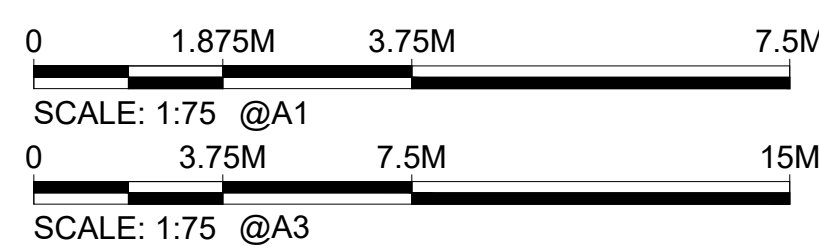
6 BUILDING 1A SECTION
SCALE: 1:75

MATERIAL KEY

- | | |
|--|---|
| 1. Handmade clay facing brickwork | 17. Angled handmade clay facing brick panel |
| 2. Recessed handmade clay facing brickwork | 18. Sawtooth textured brick panel |
| 3. Textured brickwork | 19. Projected texture brick panel |
| 4. Stone coping | 20. Restored and retained metal roof |
| 5. Stone lintels | 21. Original windows |
| 6. Dark metal spandrel panels | 22. White stucco finish |
| 7. Textured brick base | 23. Metal railing |
| 8. Metal shingle roof | 24. Original brickwork |
| 9. Dark framed metal windows | 25. Retained floor boards and timber beams |
| 10. Clear neutral glazing | 26. Slate roof |
| 11. Dark metal decorative balustrade | 27. Original mouldings retained |
| 12. Dark metal planter box | 28. Painted wooden door |
| 13. Dark metal dormer hood | 29. Bespoke ceramic tile |
| 14. Dark metal roof | 30. Metal panels |
| 15. Dark metal dormer | 31. Secondary glazing |
| 16. Smooth texture dark brick base | 32. New slate roof to match existing |

KPF

Use of Kohn Pedersen Fox Associates' files ("Files") is subject to acceptance of the following disclaimer. Users must not scale drawings; written dimensions govern. All dimensions are in millimetres unless otherwise stated. Files are provided for users' reference only and revisions to Files may be issued from time to time. KPF makes no warranty of any kind, express or implied, with respect to the Files. Files must be independently checked by users to ensure adequacy for any particular purpose. Users must immediately notify KPF in writing of any discrepancies. KPF does not accept any duty of care to users and excludes all liability due to their use of Files. Users agree to indemnify KPF against any loss arising from their use of Files.



No.	Issue	Date
0	PLANNING APPLICATION	SEP/2018

**Kohn Pedersen Fox Associates
(International) PA
Architects and Planning Consultants**

7A Langley Street
London WC2H 9JA England
T: +44 (0) 20 3119 5300
F: +44 (0) 20 7497 1175
<http://www.kpf.com>

Proj. No.	Project		
2648	HEYTHROP COLLEGE		
Scale	1:75 @ A1	Drawn by	Checked by
	1:150 @ A3	KPF	PF
Drawing Title			
PROPOSED			
DETAIL BAY BUILDING 1A & 1B			
No.	PA-300	Rev.	0