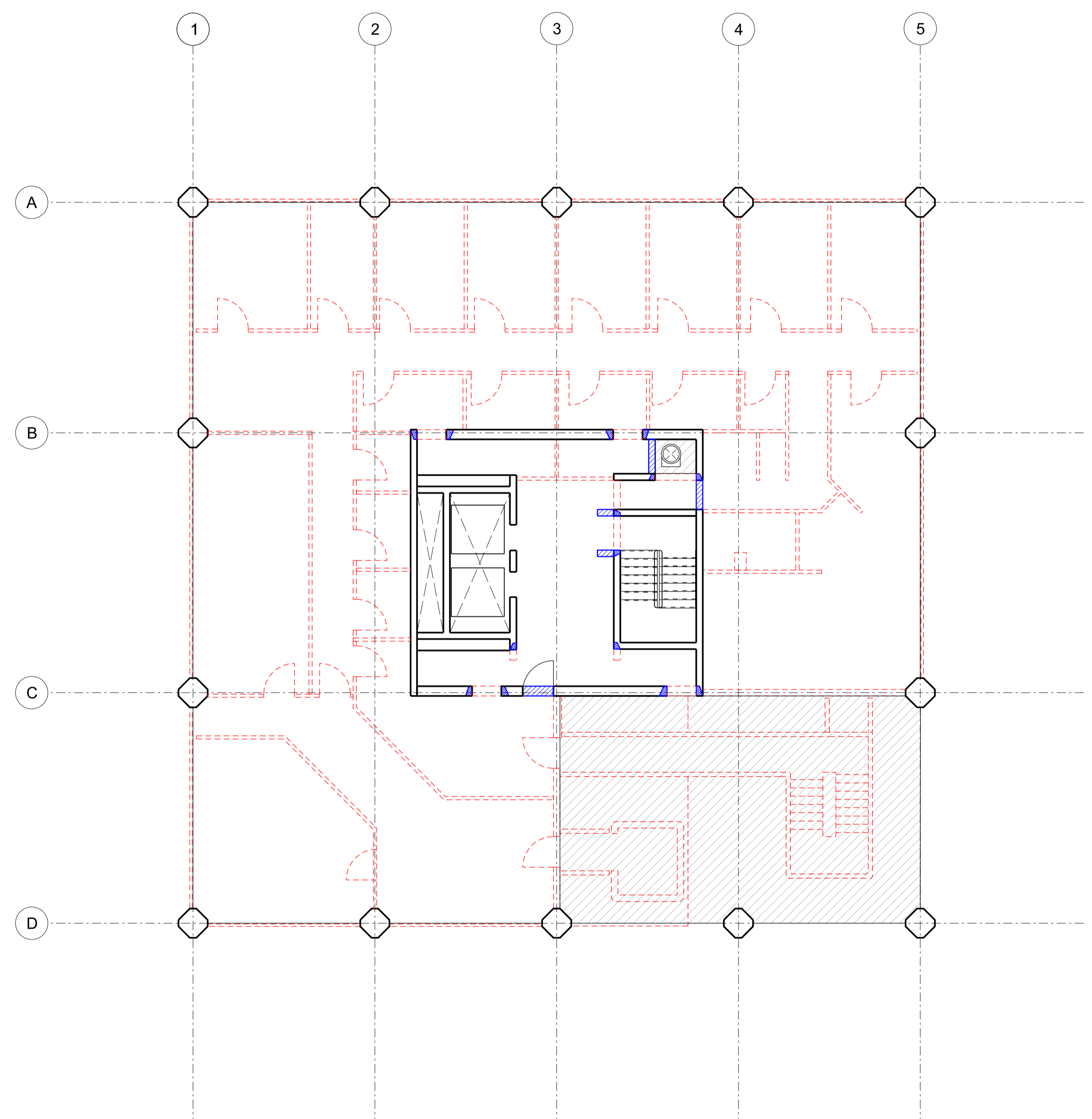


- NOTE
1. THIS DRAWING IS COPYRIGHT STUDIO E LLP.
 2. THE CONTRACTOR MUST NOT SCALE FROM THE DRAWING. ALL DIMENSIONS TO BE TAKEN FROM DIMENSION STRINGS.
 3. WHERE ANY DISCREPANCIES ARE FOUND BETWEEN DIMENSIONS THESE MUST BE BROUGHT TO THE ATTENTION OF THE ARCHITECTS FOR RESOLUTION.
 4. WHERE DISCREPANCIES EXIST BETWEEN REFERENCE OR ASSEMBLY DRAWINGS & DETAIL DRAWINGS, THE LATTER TAKE PREFERENCE.

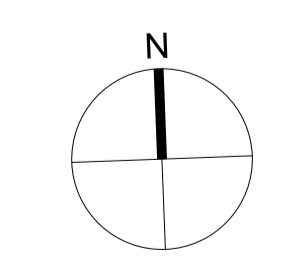
- Key
- Circulation
 - Community Use
 - New Residential
 - Community Use Office Space
 - Existing Removed



EXISTING FLOOR PLAN MODIFIED



PROPOSED FLOOR PLAN



PLANNING	
STUDIO E LLP Palace Wharf, Rainville Road, London, W8 9HN, Tel: 020 7385 7125 Fax: 020 7381 4995	
GRENfell TOWER REGENERATION PROJECT	
PROPOSED WALKWAY +1 (OFFICE) FLOOR PLAN DRAWING	
1:100@A1	10/09/12
SCALE	DATE
1279	PL114 00
DWG. NO.	REVISION CHECKED