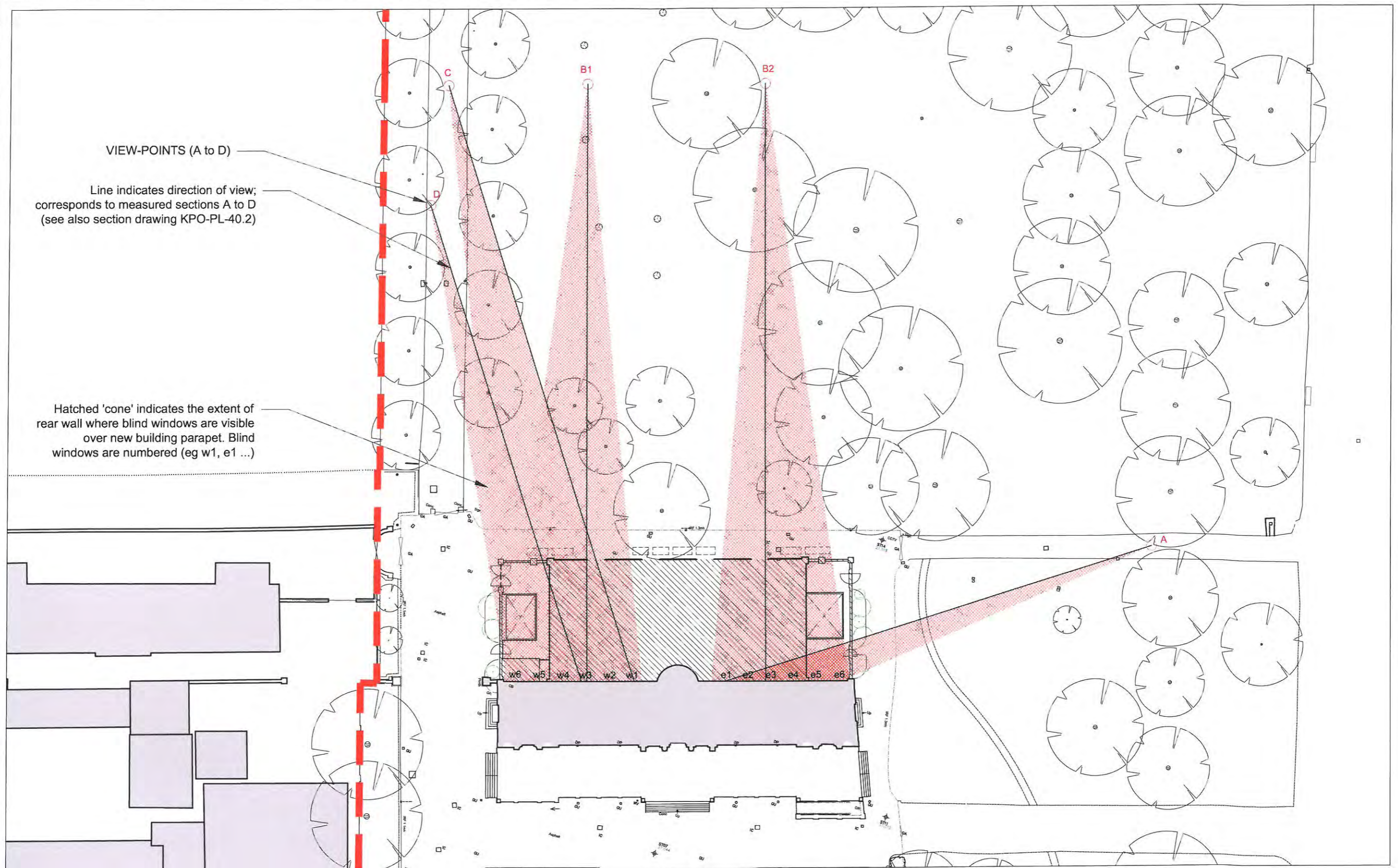


Appendix IX.

Analysis of views towards north elevation of the Orangery.

The following drawings indicate how all blind 'windows' of the north wall of the Orangery can be seen from the view points shown.



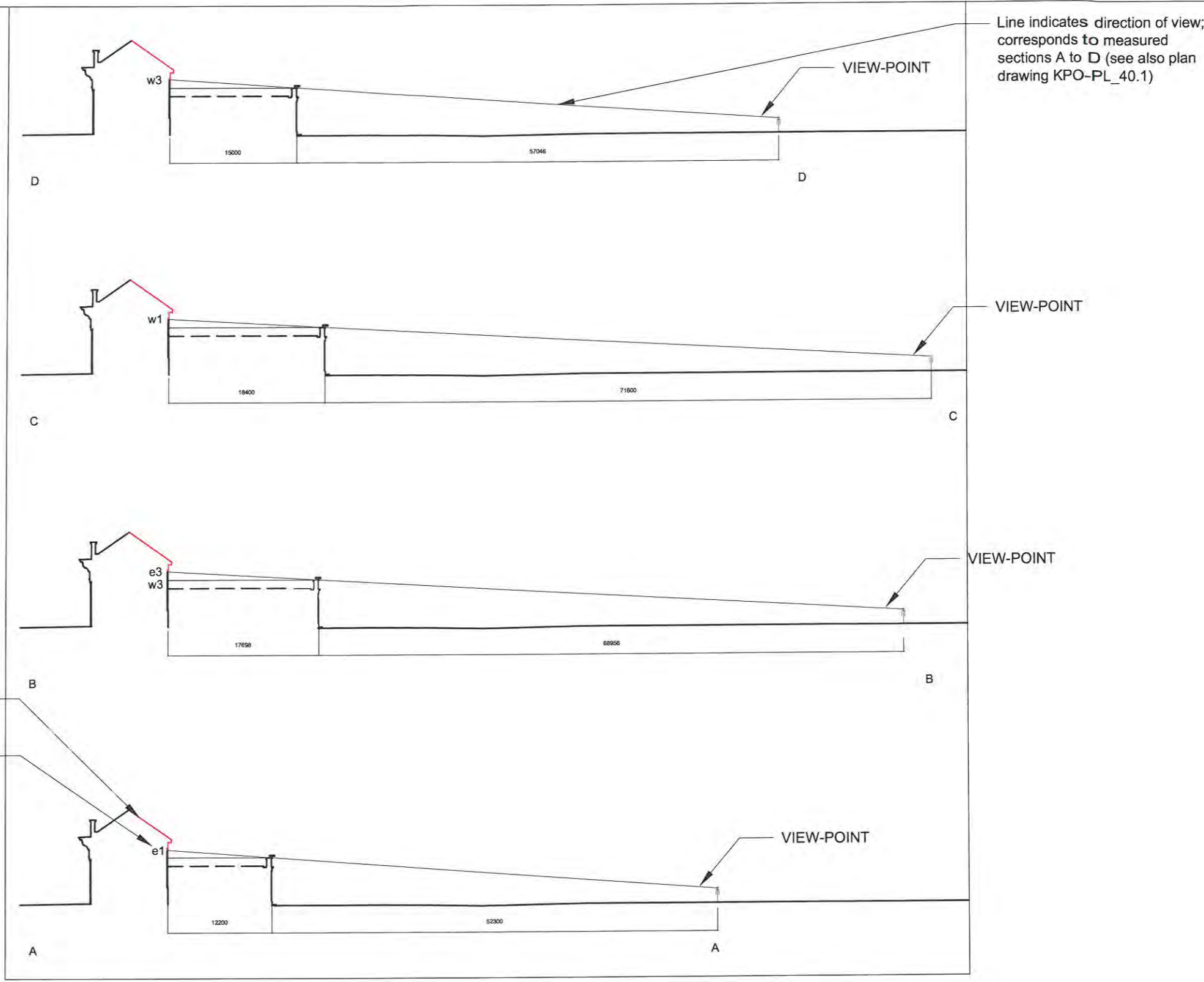
Liam O'Connor
Architects and Planning Consultants

75 Cowcross Street
London EC1M 6EL

Telephone: 020 7250 1983
Facsimile: 020 7251 6310
Email: info@liamconnor.com

Orangery Yard New Building
Plan showing viewable areas of Orangery blank windows above parapet of new building.

KPO-PL-DAS-40.1



Extent of visible fabric (in red).

References to blind windows
(see plan KPO-PL-40.1).

Liam O'Connor
Architects and Planning Consultants

75 Cowcross Street
London EC1M 6EL

Telephone: 020 7250 1983
Facsimile: 020 7251 6310
Email: info@liamoconnor.com

Orangery Yard New Building
Sections showing viewable areas of Orangery blank windows above parapet of new building.

KPO-PL-DAS-40.2