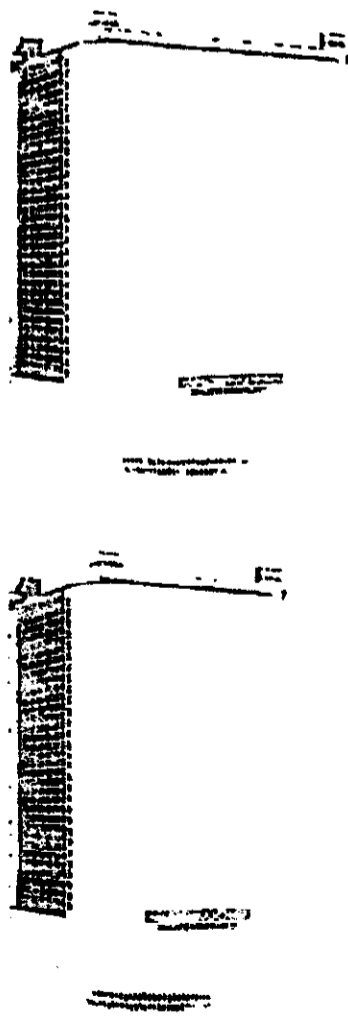


THE PHENE, 9 PHENE STREET, LONDON, CHELSEA, SW3

APPENDIX C  
HEAT PUMP INFORMATION FOR PROPERTY

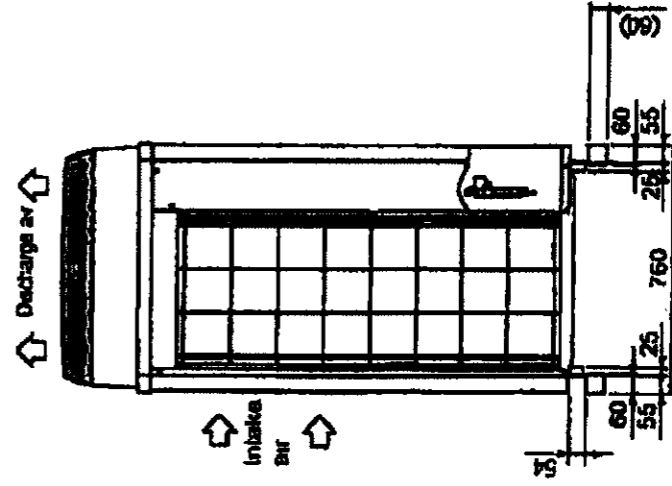
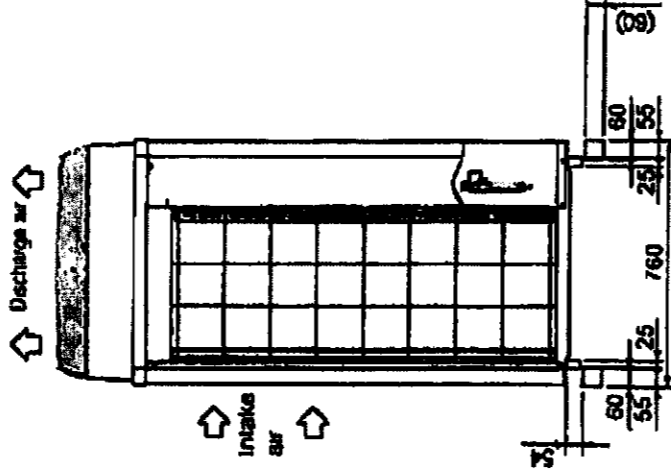
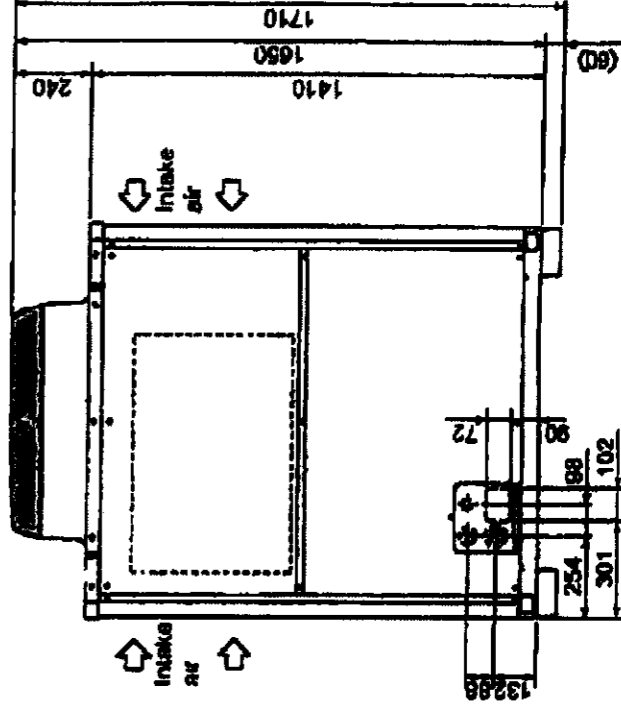
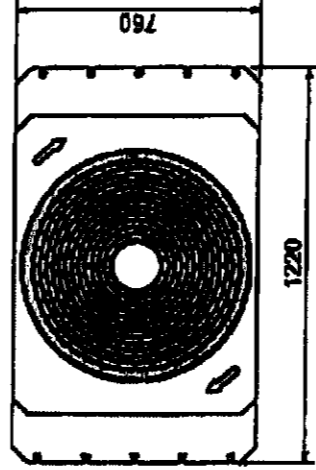
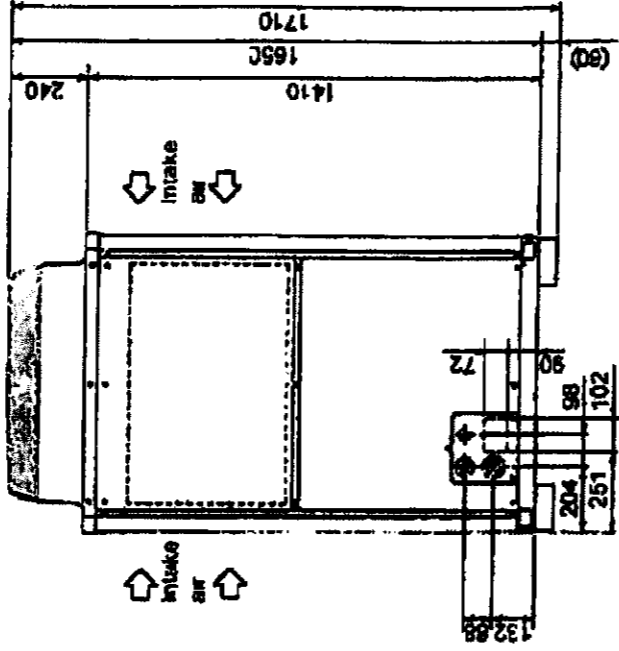
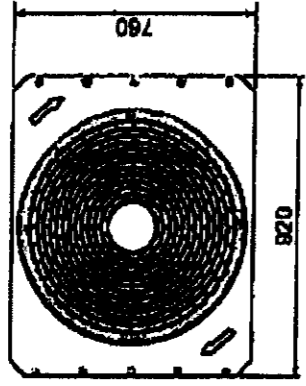
N N



MTSUBISHI PUHY-P250

Model No.	PUHY-P250H1-A	PUHY-P350H1-A	PUHY-P450H1-A	PUHY-P550H1-A
CAPACITY (kW)	21.5	27.5	33.5	40.0
Heating (nominal)	20.0	25.5	31.5	38.0
Cooling (nominal)	20.0	25.5	31.5	38.0
Heating (UK)	20.7	26.6	33.0	39.6
Cooling (UK)	20.7	26.6	31.5	37.6
POWER INPUT (kW)	7.83	9.39	12.09	13.47
Heating (nominal)	7.73	9.07	11.20	12.22
Cooling (nominal)	7.73	9.07	11.20	12.22
Heating (UK)	7.75	9.11	11.23	12.27
Cooling (UK)	7.75	9.11	11.23	12.27
COMPER (nominal)	4.02 / 3.62	3.99 / 3.69	3.72 / 3.27	3.71 / 3.40
MAX NO. OF CONNECTABLE INDOOR UNITS	21	26	30	34
AIRFLOW (m³/min)	185	185	225	225
High	185	185	225	225
NOISE (dBA)	57	59	60	61
WEIGHT (kg)	200	215	245	245
DIMENSIONS (mm)	Width 920, Depth 760, Height 1710	Width 920, Depth 760, Height 1710	Width 1220, Depth 760, Height 1710	Width 1220, Depth 760, Height 1710
ELECTRICAL SUPPLY	380-415V, 50Hz	380-415V, 50Hz	380-415V, 50Hz	380-415V, 50Hz
PHASE	3	3	3	3
STARTING CURRENT (A)	8	8	8	8
Heating (A)	12.1	14.5	18.6	20.8
Cooling (A)	11.9	14.8	17.3	20.4
FUSE RATING (NHCB type BS EN 60947-2) - (A)	20	25	32	32
MAINS CABLE No. Core	4 + earth	4 + earth	4 + earth	4 + earth
TOTAL PIPING LENGTH	1000m max	165m max	40m max	40m max
FURTHEST PIPING LENGTH	1000m max	165m max	40m max	40m max
FURTHEST PIPING LENGTH AFTER 1st BRANCH	1000m max	165m max	40m max	40m max
BETWEEN INDOOR AND OUTDOOR UNITS - HEIGHT	50m max (50m max if outdoor installed below)	50m max (50m max if outdoor installed below)	50m max (50m max if outdoor installed below)	50m max (50m max if outdoor installed below)
BETWEEN INDOOR AND INDOOR UNITS - HEIGHT	15m max	15m max	15m max	15m max

mitsubishi puhy-p250





THE PHENE, 9 PHENE STREET, LONDON, CHELSEA, SW3

**APPENDIX D**

HEAT PUMP INFORMATION FOR SWIMMING POOL

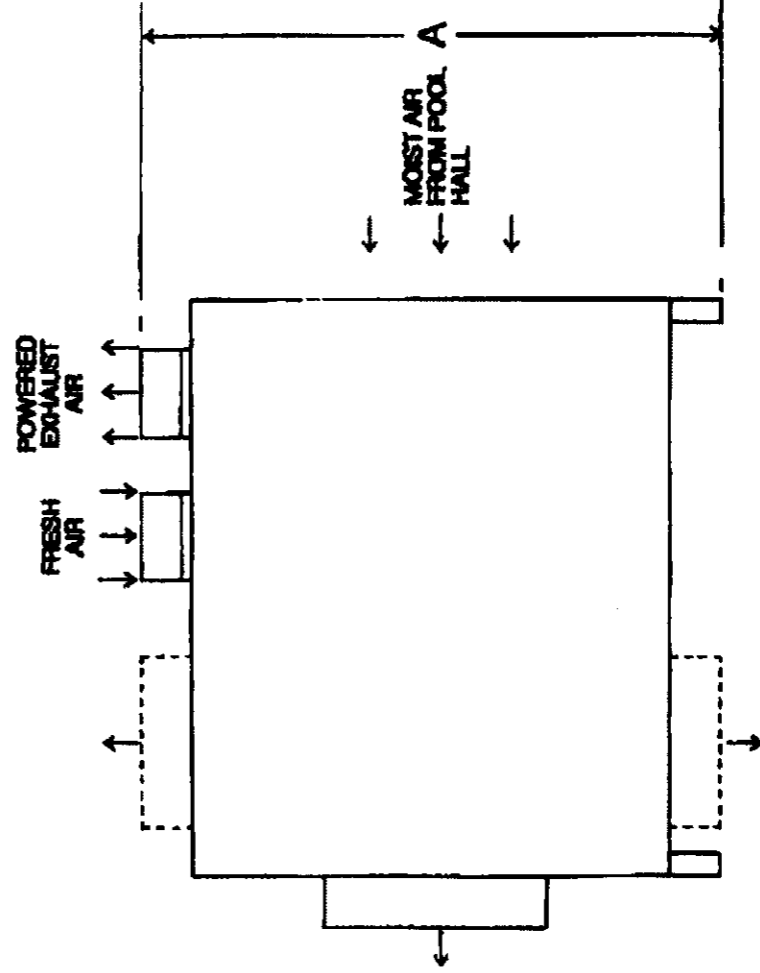
**SWIMMING POOL HEAT PUMP**

*Calorex DELTA Specifications*

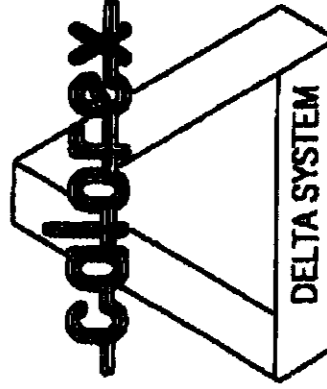
MODEL	1	2	4	6	8	10	12
POOL AIR RECIRCULATION FAN AIR FLOW M <sup>3</sup> /HR:-	2500	2600	3000	4000	5000	6000	7000
EXHAUST / FRESH AIR FAN AIR FLOW M <sup>3</sup> /HR (STEPPED CONTROL):-	120-1200	130-1300	150-1500	200-2000	250-2500	300-3000	350-3500
DEHUMIDIFICATION DUTY LITRES/HR @ 28deg C 60% RH TOTAL DUTY BY HEAT PUMP & FRESH AIR DILUTION:-	9.5	10.7	12.1	16.1	20.1	24.2	28.2
HEAT TO AIR KW							
VIA HEAT PUMP (MODE "A"):-	1.3	1.5	1.4	1.5	1.6	2	2.5
VIA HEAT PUMP (MODE "B"):-	3.85	4.9	5.1	6.6	8	10	12.1
VIA LPHW @ 80 deg C:-	20	22	25	30	35	38	42
MAX AVAILABLE (Mode B + LPHW):-	23.85	26.9	30.1	36.6	43	48	54.3
HEAT TO POOL WATER KW							
VIA HEAT PUMP (MODE "A"):-	4	5.5	5.8	8	10	12.5	15
VIA HEAT PUMP (MODE "B"):-	17	2.2	2.3	3	3.7	4.6	5.5
VIA LPHW @ 80 deg C:-	10	10	10	15	15	19	19
MAX AVAILABLE (Mode A + LPHW):-	14	15.5	15.8	23	25	31.5	34
COOLING DUTY (sensible) KW:-	-2*	-2.5*	-2.94	-3.85	-4.7	-5.9	-7.1
COOLING DUTY (TOTAL) KW:-	-3*	-4*	-4.2	-5.5	-6.7	-8.4	-10.1
* = Summer cooling in mode "A"							
RECOMMENDED BOILER CAPACITY KW:-	30	32	35	45	50	60	70
TOTAL POWER CONSUMED (nominal) KWH:-	3.18	3.84	3.94	5.12	6.25	7.8	9.35
RECOMMENDED POOL SIZE M <sup>2</sup> :-							
DOMESTIC USE (light):-	50	65	70	90	110	130	160
HOTEL/CLUB USE (medium):-	45	55	60	80	100	120	140
MUNICIPAL USE (heavy):-	40	50	55	70	90	110	130

FOR ACCURATE APPLICATION SIZING CONSULT THE PG GROUP HEAT PUMPS DIVISION

*Supply Air Options*



MODEL	1 & 2	4, 6 & 8	10 & 12
A	1735	1910	1855
B	1530	1620	1620
C	655	705	855



*Optional Equipment*

- Return Air Duct Spigot
- Return Air/Fresh Air Filter Kit
- Models 1-6 Single or Three Phase
- Models 8-12 Three Phase Only
- Supply Fan Outlet Options On Request

**A British product marketed by:**

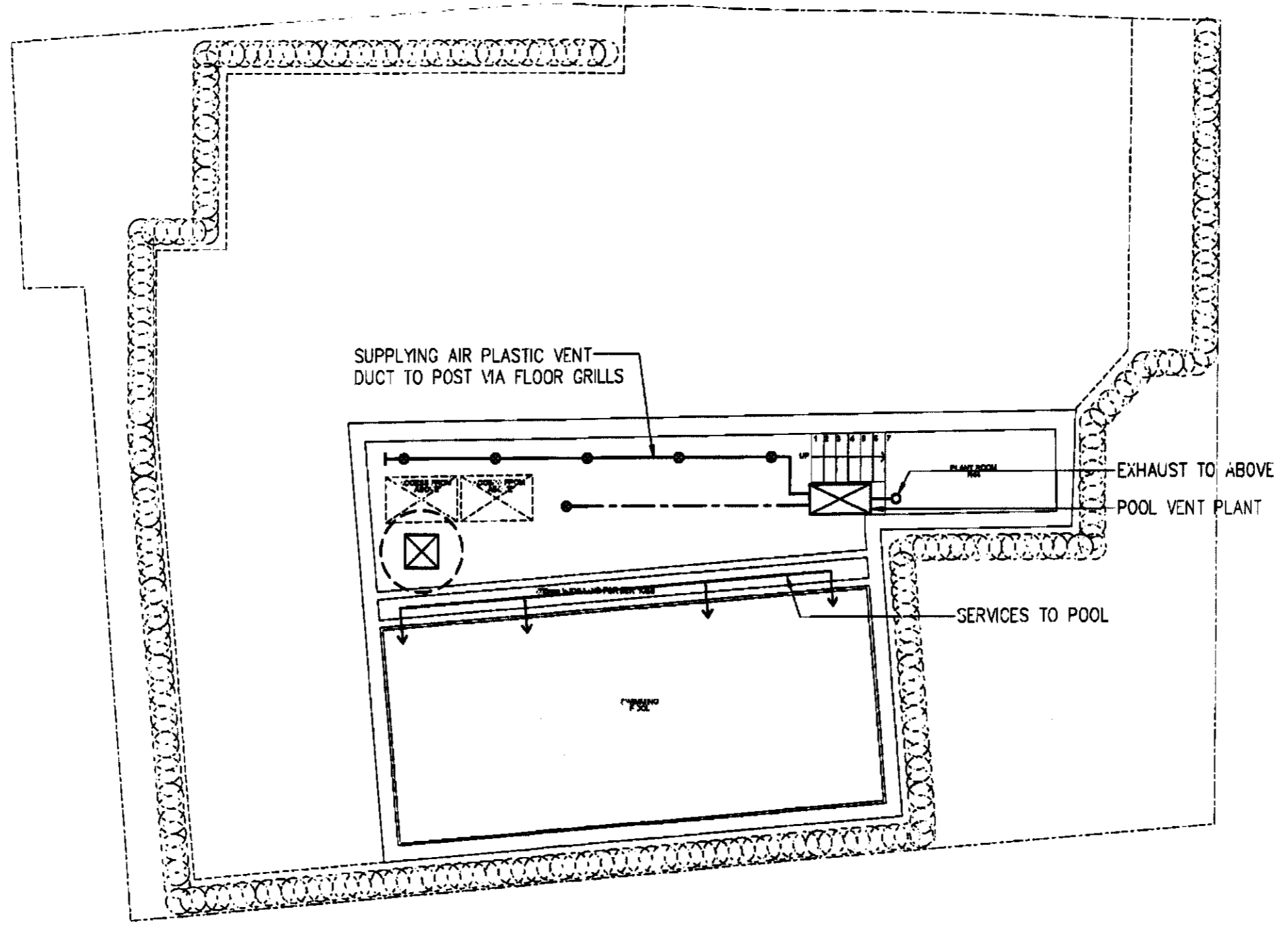
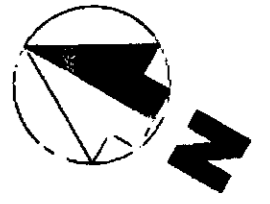
**POOL GBAR**

Unit 2 Wilton Park, Station Lane Ind. Est.,  
Witney, Oxon OX8 6FH

THE PHENE, 9 PHENE STREET, LONDON, CHELSEA, SW3

**APPENDIX E**

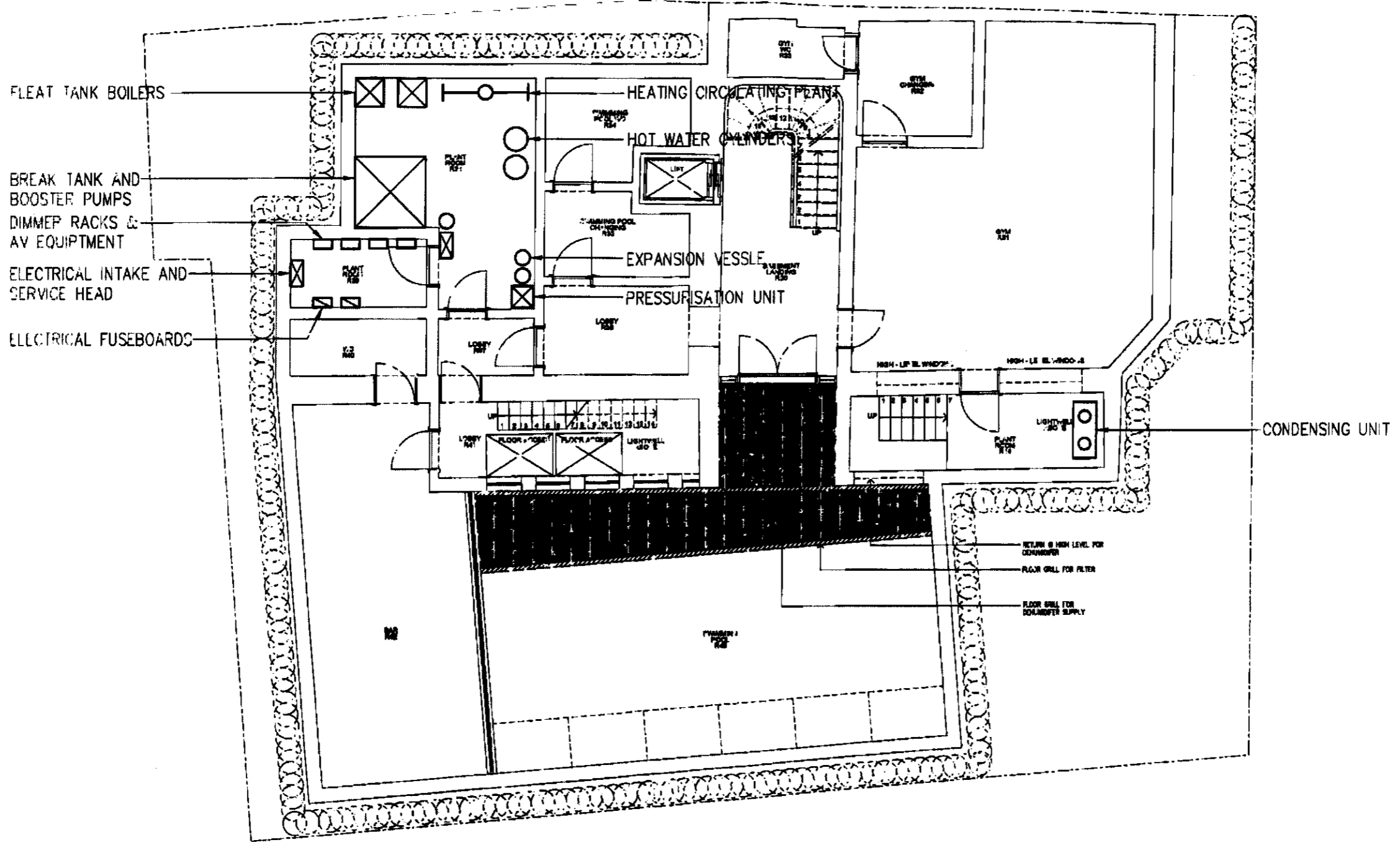
Drawing No's :  
5819/M/1P  
5819/M/2P  
5819/M/3P  
5819/M/4P  
5819/M/5P  
5819/M/6P  
5819/M/7P



The Kut Partnership  
 tel: +44(0)20 8348 5171  
 fax: +44(0)20 8340 8926  
 email: tkp@kut.co.uk  
 web: www.kut.co.uk

Description			<b>PLANNING - SUB BASEMENT PLAN</b>			ref. date	REVISIONS			
						P	PLANNING ISSUE			
Scale	A3@1:100	Drawn	PJ	Project			Project No.	Services	Dwg No.	Rev.
Date	July 2011	checked					5819	M	1	P

**THE PHENE, 9 PHENE STREET, LONDON, SW3**



The Kut Partnership  
 tel: +44(0)20 8348 5171  
 fax: +44(0)20 8340 8928  
 email: tkp@kut.co.uk  
 web: www.kut.co.uk

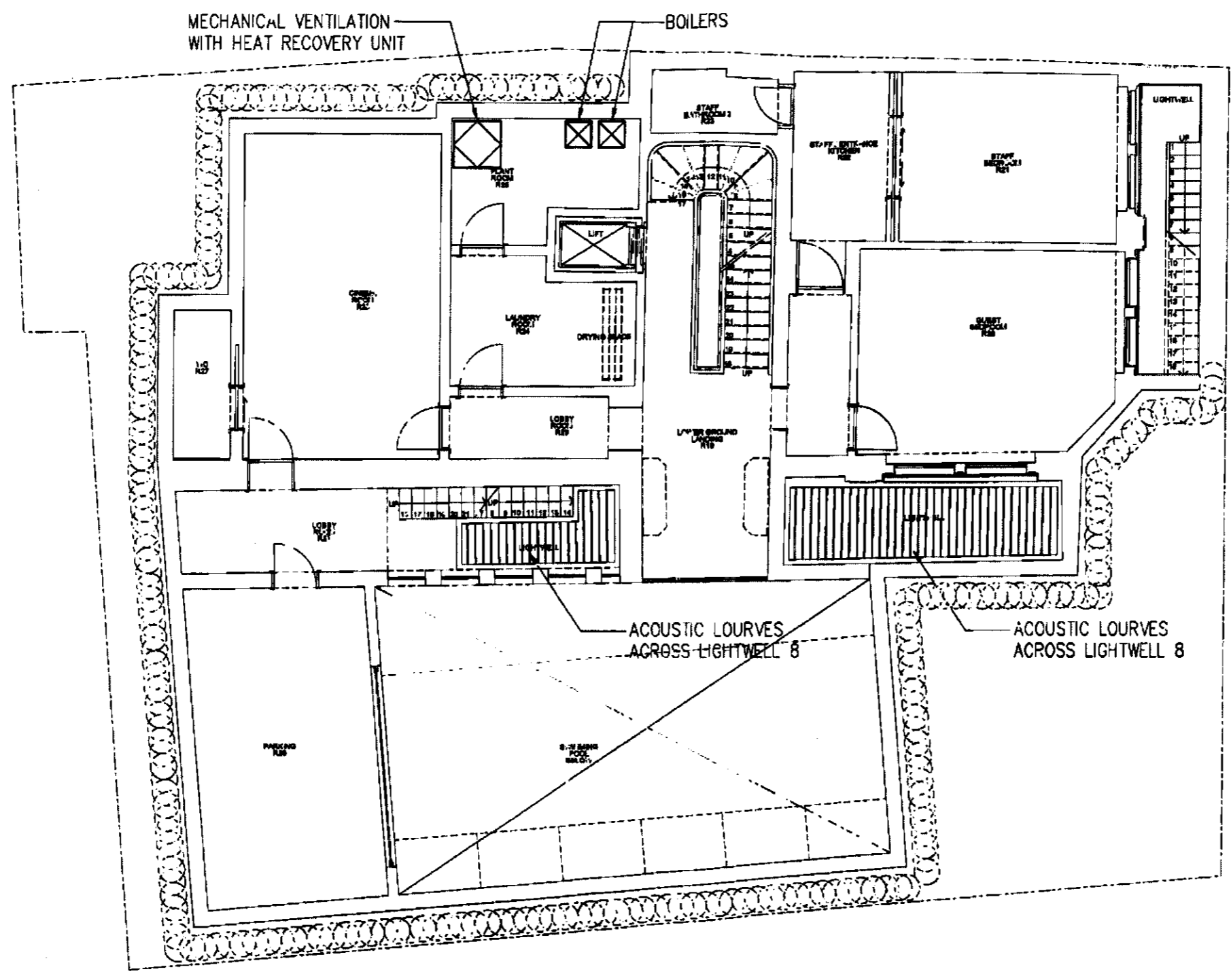
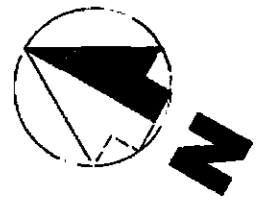
Description	
Scale A3@1:100	Drawn PJ
Date July 2011	Checked

**PLANNING - BASEMENT PLAN**

**THE PHENE, 9 PHENE STREET, LONDON, SW3**

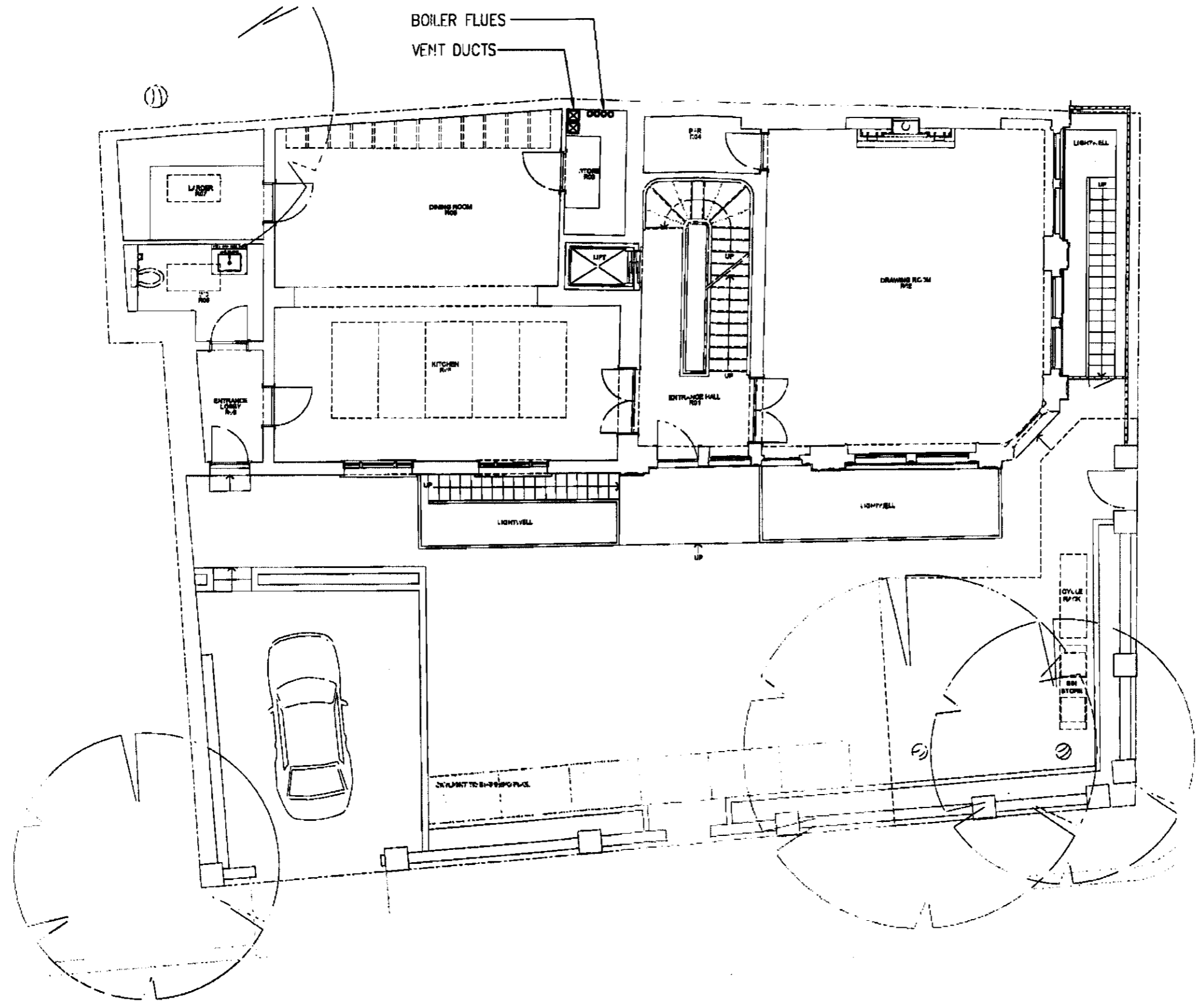
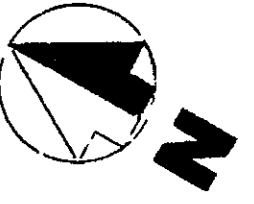
ref. date	REVISIONS		
P 06.07.11	PLANNING ISSUE		
Project No.	Service	Org. No.	Rev.
<b>5819</b>	<b>M</b>	<b>2</b>	<b>P</b>





The Kut Partnership  
 Tel: +44(0)20 8348 5171  
 Fax: +44(0)20 8340 8926  
 email: tkp@kut.co.uk  
 web: www.kut.co.uk

Description			<b>PLANNING - LOWER GROUND PLAN</b>				ref. date	REVISIONS		
			<b>THE PHENE, 9 PHENE STREET, LONDON, SW3</b>				P 06.07.11	PLANNING ISSUE		
Scale	A3@1:100	Drawn	PJ	Project			Project No.	Services	Dwg No.	Rev.
Date	July 2011	Checked					5819	M	3	P



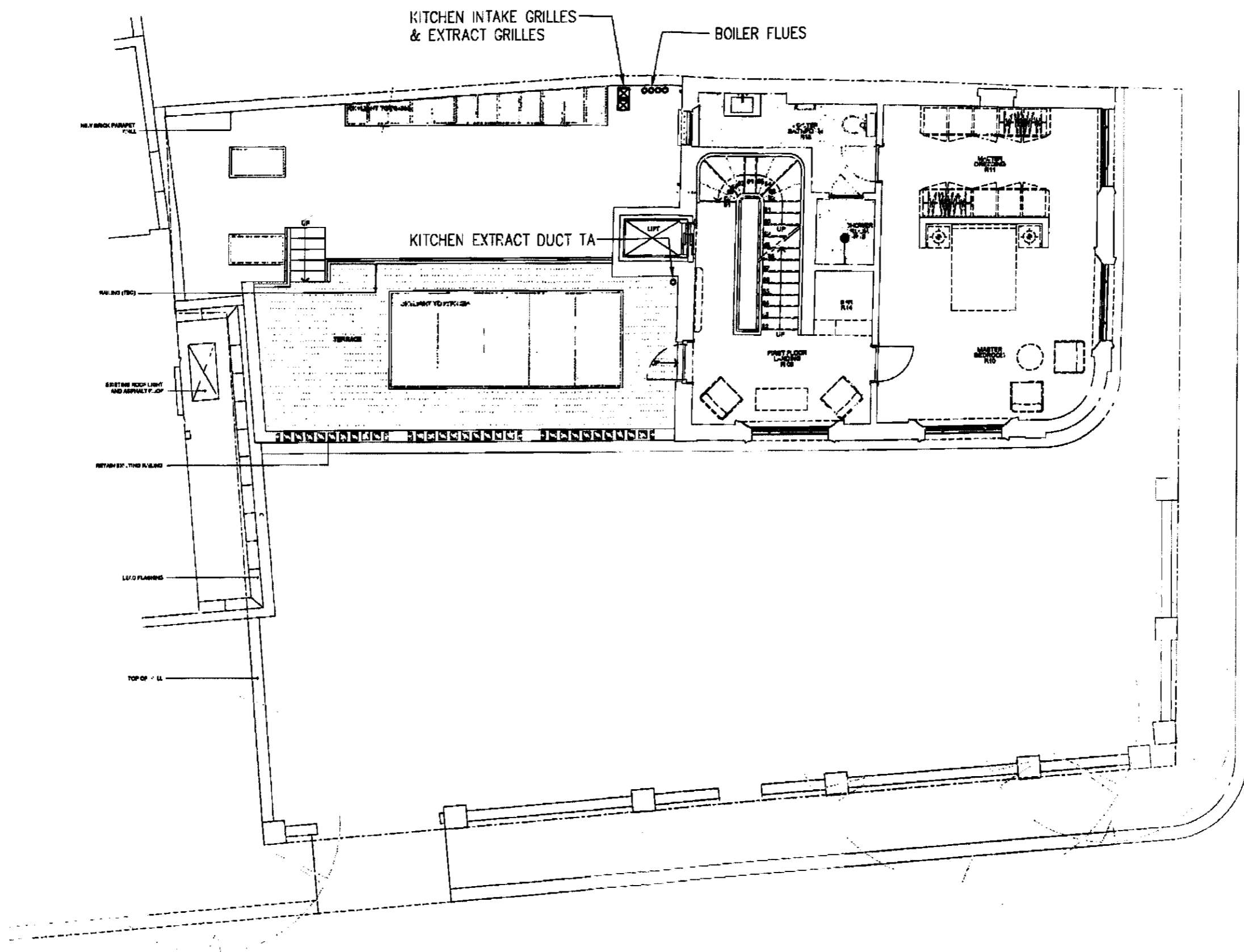
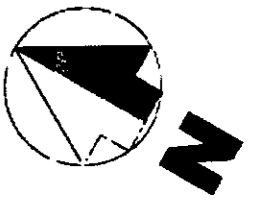
**PLANNING - GROUND FLOOR PLAN**

**THE PHENE, 9 PHENE STREET, LONDON, SW3**

**KUT**  
 The Kut Partnership  
 Tel: +44(0)20 8348 5171  
 Fax: +44(0)20 8340 8926  
 Email: tkp@kut.co.uk  
 Web: www.kut.co.uk

Description		Project	
Scale	Drawn	Project	
A3@1:100	PJ		
Date	Checked		
July 2011			

ref. date	REVISIONS		
P 06.07.11	PLANNING ISSUE		
Project No.	Services	Dwg No.	Rev.
5819	M	4	P



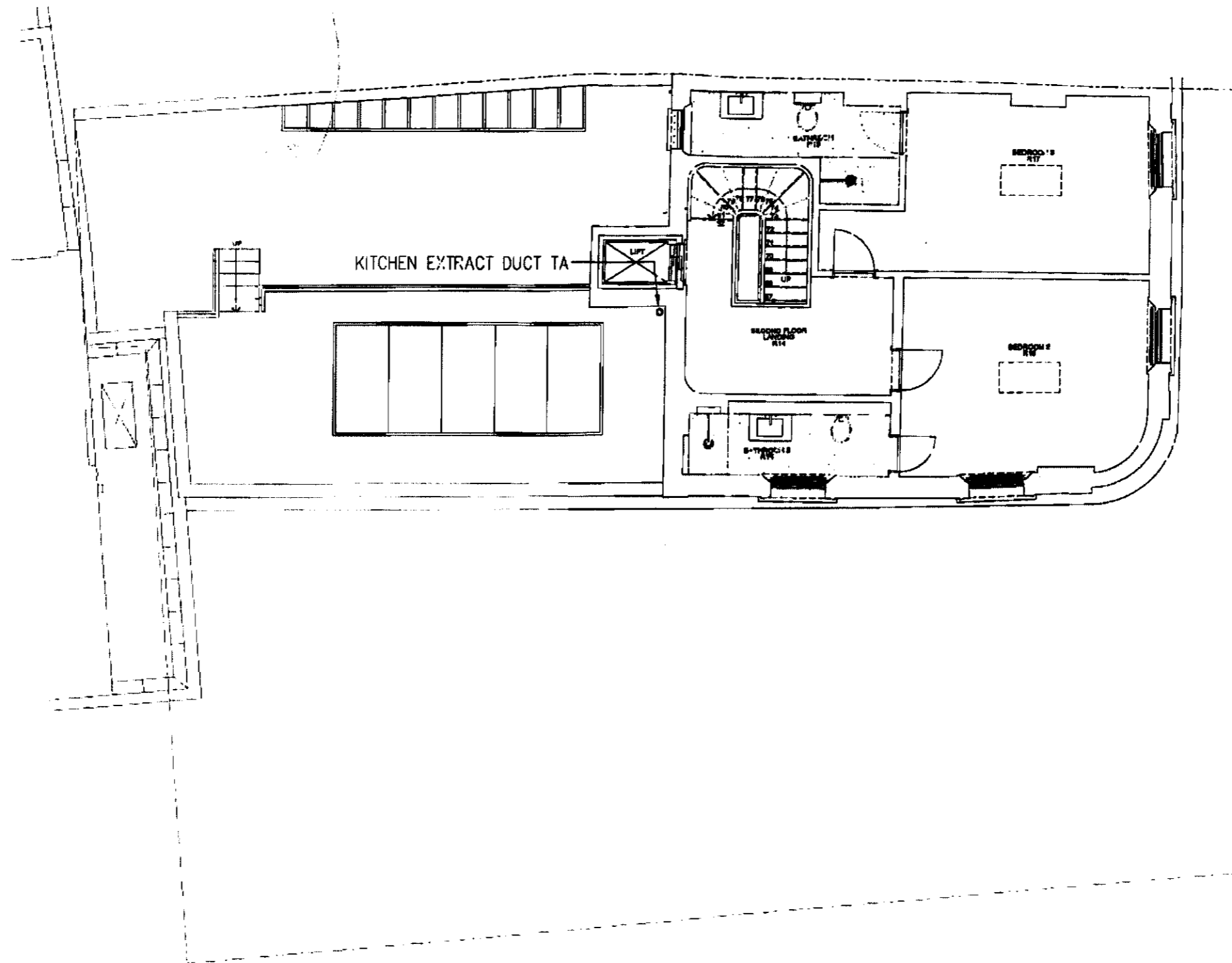
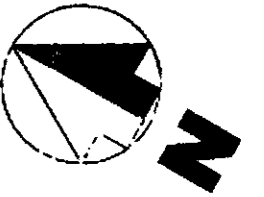
**PLANNING - FIRST FLOOR PLAN**

**THE PHENE, 9 PHENE STREET, LONDON, SW3**



The Joint Partnership  
 Tel: +44(0)20 8348 5171  
 Fax: +44(0)20 8340 8926  
 Email: [tkp@kut.co.uk](mailto:tkp@kut.co.uk)  
 Web: [www.kut.co.uk](http://www.kut.co.uk)

Description		ref./date		REVISIONS	
		P 06.07.11		PLANNING ISSUE	
Scale	Drawn	Project No.	Services	Dwg No.	Rev.
A3@1:100	PJ	5819	M	5	P
Date	Checked				
July 2011					



**KUT**

The Kut Partnership  
 Tel: +44(0)20 8348 5171  
 Fax: +44(0)20 8340 8928  
 Email: tkp@kut.co.uk  
 Web: www.kut.co.uk

Description

**PLANNING - SECOND FLOOR PLAN**

Scale A3@1:100

Drawn PJ

Project

Date July 2011

Checked

**THE PHENE, 9 PHENE STREET, LONDON, SW3**

ref. date  
 P  
 06.07.11

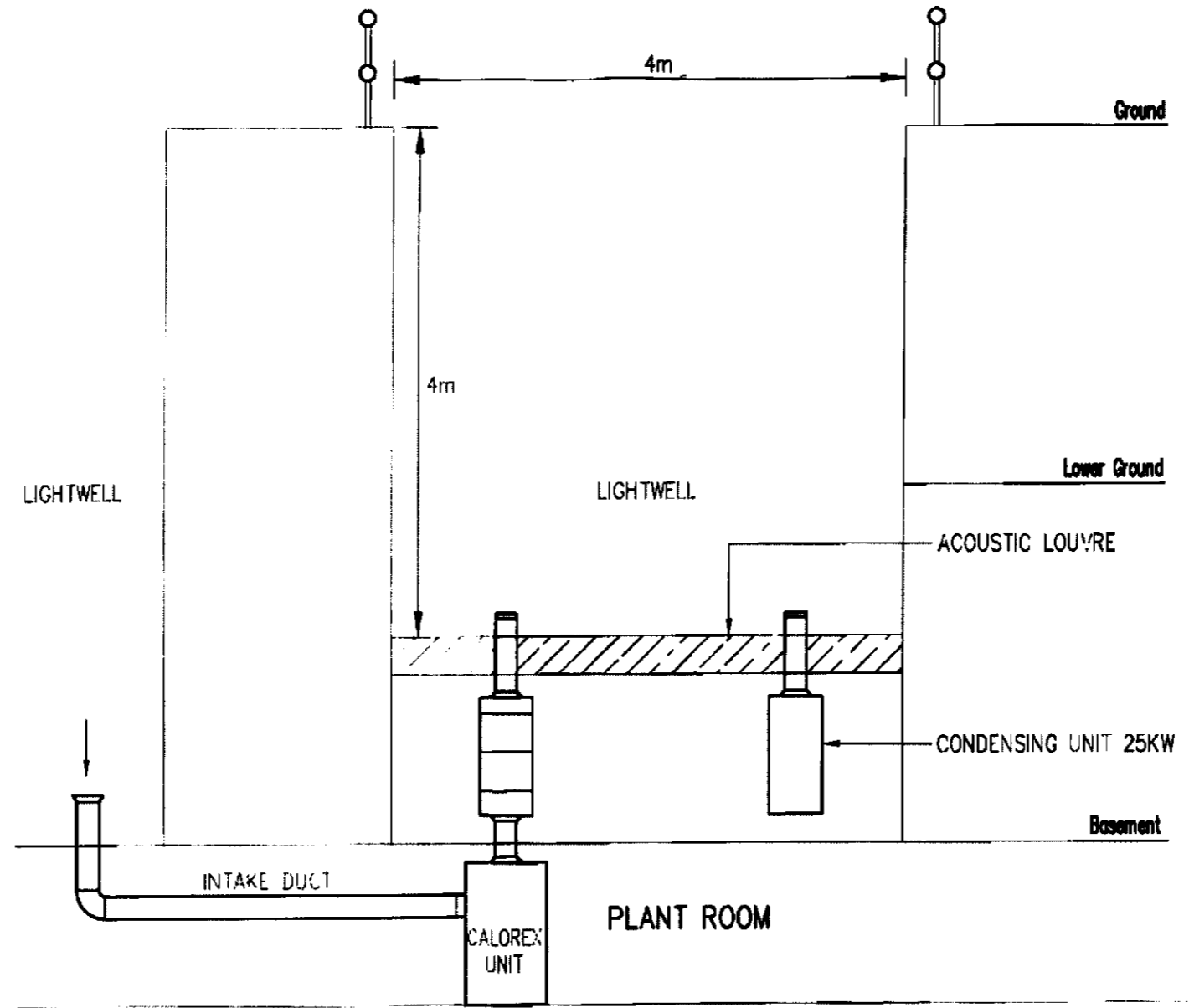
REVISIONS  
 PLANNING ISSUE

Project No.  
**5819**

Services  
**M**

Draw No.  
**6**

Rev.  
**P**



**KUT**

The Kut Partnership  
 Tel: +44(0)20 8348 5171  
 Fax: +44(0)20 8340 8828  
 Email: tkp@kut.co.uk  
 Website: www.kut.co.uk

Description			<b>PLANT ROOM SECTION</b>				ref./date	REVISIONS		
							P 06.07.11	PLANNING ISSUE		
Scale: A3@1:50	Drawn: PJ	Project:	<b>THE PHENE, 9 PHENE STREET, LONDON, SW3</b>				Project No.	Services	Dwg No.	Rev.
Date: July 2011	Checked:						5819	M	7	P