

# **Public Spaces Protection Order (PSPO)- Wildlife feeding**

**Analysis of stakeholder consultation**

**January 2025**

**Consultation and Participation Team  
The Royal Borough of Kensington and Chelsea  
[consult@rbkc.gov.uk](mailto:consult@rbkc.gov.uk)**



**THE ROYAL BOROUGH OF  
KENSINGTON  
AND CHELSEA**

# Introduction

## Background

Some residents are concerned that wildlife feeding can impact the cleanliness and appearance of the borough. Pigeon droppings, along with discarded food, can attract rats and insects, creating hygiene issues. Pigeon droppings deface buildings and can cause slippery pavements. Pigeon droppings are corrosive and can damage buildings over time.

The Council undertook a consultation to consider whether there is a need to introduce additional measures to manage a minority of people who choose to feed wildlife in those locations and other parts of the borough.

The results of the consultation highlighted a range of antisocial behaviour associated with wildlife feeding is experienced by Kensington and Chelsea residents. There was also strong support for the introduction of a Public Spaces Protection Order to prohibit wildlife feeding in the three specific locations:

1. The pavement outside South Kensington Station
2. The pavement outside Gloucester Road Station
3. The area outside Holland Park at the junction with Kensington High Street

This led to the development of a proposed PSPO, to which we have welcomed residents' views before a decision is made on whether to adopt the PSPO or not.

## Consultation methodology

An online survey was promoted via various avenues, including the Council's Consultation and Engagement Hub, e-newsletters and K&C Life. In total, 168 responded to the survey.

## Appendix

An appendices document is also available on request, containing data tables and all comments made by respondents to the survey.

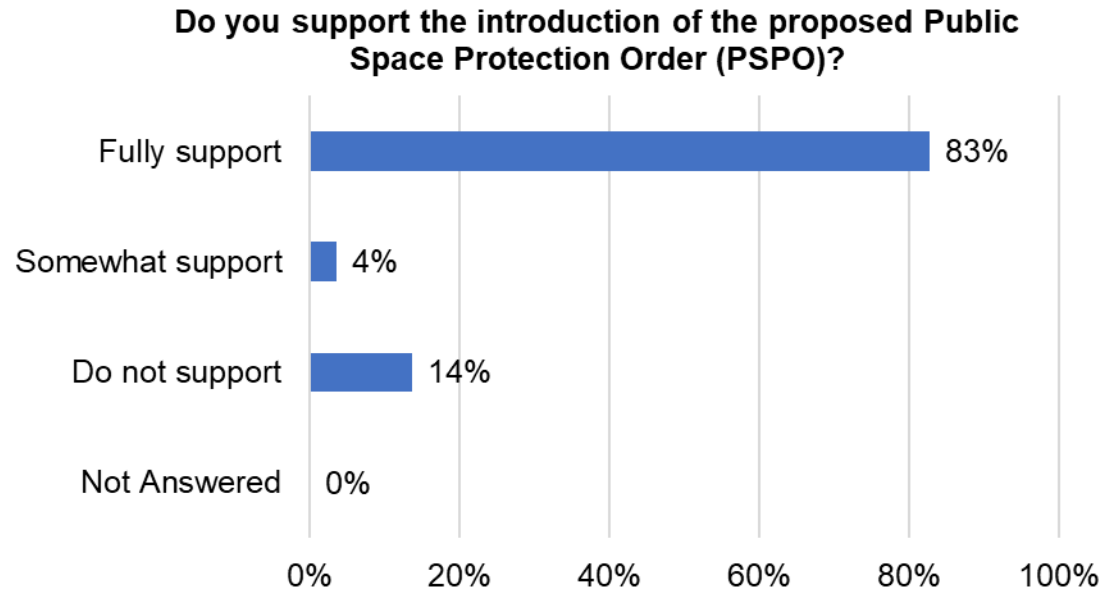
## Acknowledgements

The Council would like to thank all residents and stakeholders who took the time to provide feedback on the proposed PSPO implementation.

# Support for the PSPO

Respondents were asked if they support the introduction of the proposed Public Space Protection Order (PSPO).

- The **majority** of respondents '**fully support**' or '**somewhat support**' the introduction of the PSPO with **87 per cent** combined.
- '**Do not support**' was selected by **14 per cent** of respondents.



*Base: All respondents (168)*

# Support for the PSPO

Those that opposed the introduction of the PSPO were asked to explain why.

Comments made have been themed and are summarised in the table below. Examples of comments can also be seen on the next page, with the full list of themes and comments found in the appendices.

Theme	Count
Wildlife feeding is not an issue	9
Concerns for wildlife	7
Concerns for vulnerable people	4
Council should focus on different issues	2
Other	2
Wildlife feeding is a problem	2



# Comments - Support for the PSPO

*"It's not an issue, not a good use of time and hard to enforce."*

Wildlife feeding is not an issue

*"Only if you work to support the people who are feeding them as they may be doing this for mental health or spiritual reasons so need to be encouraged in a fair and considerate manner which would not be detrimental for them (which in the long run increases costs to the Council and NHS)."*

Concerns for vulnerable people

*"I am against it. It is bizarre that we are spending public money on making sure wildlife is NOT part of our environment."*

Concerns for wildlife



*"I think it's appalling to target kind people who are showing kindness to animals. Target the humans who are shoplifting and committing violence NOT the wonderful humans who are for caring for starving birds. I'm really shocked and disappointed by this cruel proposition."*

Council should focus on different issues

*"We are meant to care and share for other animals. It's becoming harder for them to have any space globally. Totally do not support this order and it would be better to educate people we share this planet. I mean why are humans feeling entitled to manage all the food and others starve"*

Wildlife feeding is not an issue

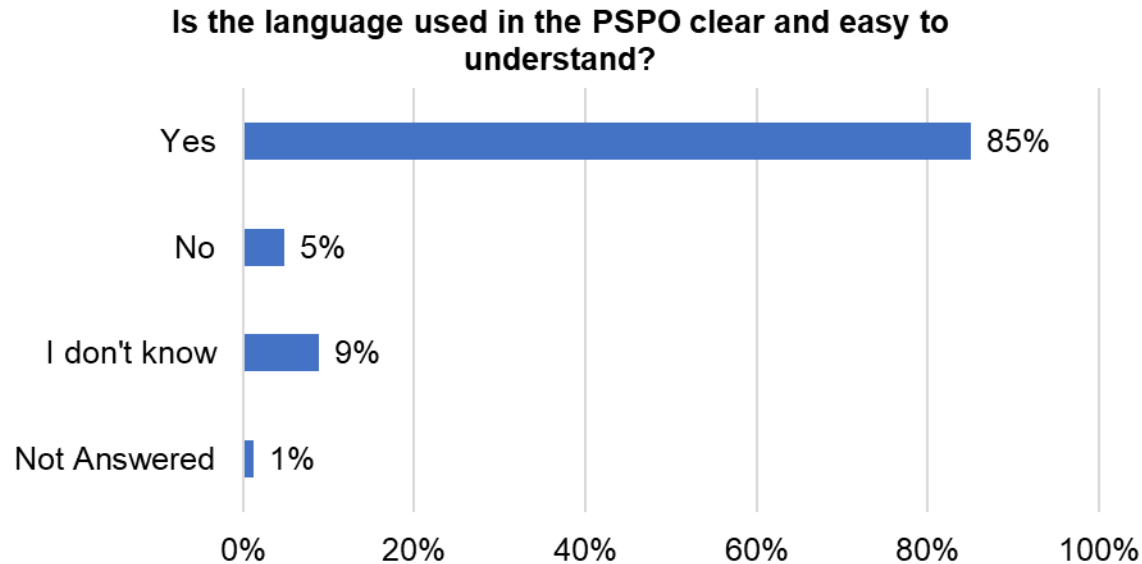


THE ROYAL BOROUGH OF  
KENSINGTON  
AND CHELSEA

# Language

Respondents were asked if the language used in the PSPO is clear and easy to understand.

- **Over three quarters** of respondents said that the language used in the PSPO is **clear and easy to understand** (85 per cent of respondents).
- The answer '**no**' was selected by **five per cent** of respondents, and **nine per cent** said '**I don't know**'.



*Base: All respondents (168)*

# Comments - Language

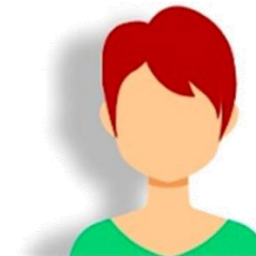
Respondents who said that the language of the PSPO was not clear were asked to explain their answer. There were seven comments to this question. Comments made have not been themed as they were various and not related to each other but they are summarised in the list below.

***“The language is clear but the statements aren’t evidenced.”***

***“I find initials hard to remember - what they mean.”***

***“Already decided and planned rules are not valid and are unjust for wildlife.”***

***“It’s a lot of words for such a small issue.”***



***“It sounds as if you are protecting the pigeons, squirrels and other vermin.”***

***“Made by stupid people.”***

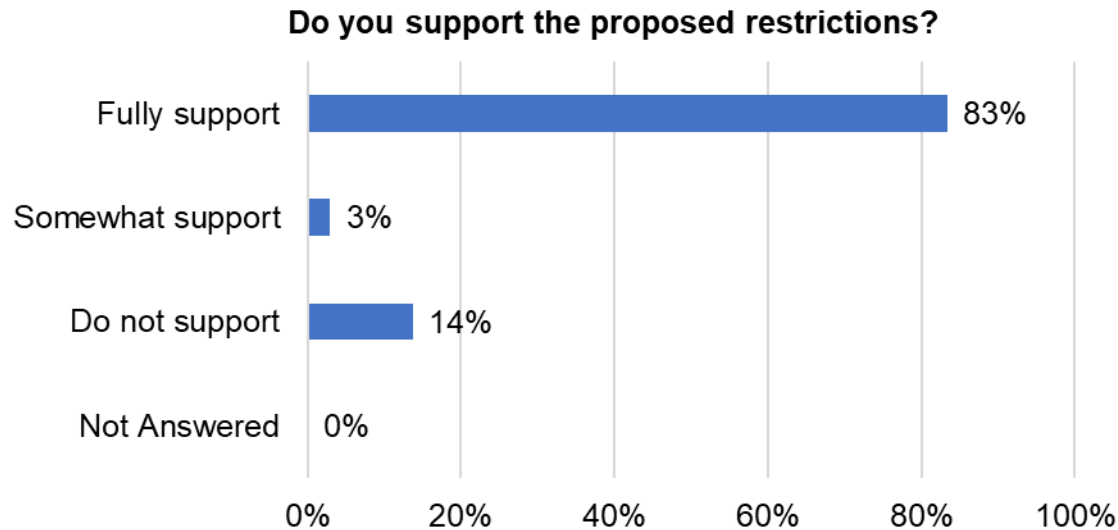
***“It's aggressive and unnecessary to go after some people probably elderly who take some comfort from feeding wildlife. Please spend your time and our money on far more important issues.”***



# Support for the proposed restrictions

Respondents were asked if they supported the proposed restrictions included in the PSPO.

- Most respondents said that they '**fully support**' or '**somewhat support**' the proposed restrictions, with **86 per cent** combined.
- Just over one in ten (14 per cent) stated they 'do not support' the restrictions proposed in the PSPO.



*Base: All respondents (168)*



# Comments on the proposed restrictions

Respondents were asked if they would like to comment on the proposed restrictions. There were 33 comments to this question. Comments made have been themed and are summarised in the table below.

Examples of comments can also be seen on the next page, with the full list of themes and comments found in the appendices.

Theme	Count
Extend to wider area/whole borough	8
Oppose	6
Concerns for wildlife	3
Concerns for vulnerable people	2
Focus on different issues	3
In favour	3
Strict enforcement needed	3
Other comment	3
Include more wildlife	2



# Comments on the proposed restrictions

*"It needs to cover the whole borough."*

Extend to wider area/whole borough

*"Not necessary."*

Oppose

*"The council should be dealing with the rise in shop lifting that is affecting our local shops not going after people who feed birds or squirrels in such a proposed aggressive manner."*

Focus on different issues

*"Leave the birds alone."*

Oppose



*"Essential."*

In favour

*"I would like many other animals included in this prohibition. Squirrels, rats, mice, foxes."*

Include more wildlife

*"Request to take consideration of the reasons behind why people are doing this. Please be humane and thoughtful when progressing this so these people are not further discriminated against, degraded and isolated. Take this as an opportunity to build the whole community for the better."*

Concerns for vulnerable people

*"You have to make sure it is strictly enforced."*

Strict enforcement needed



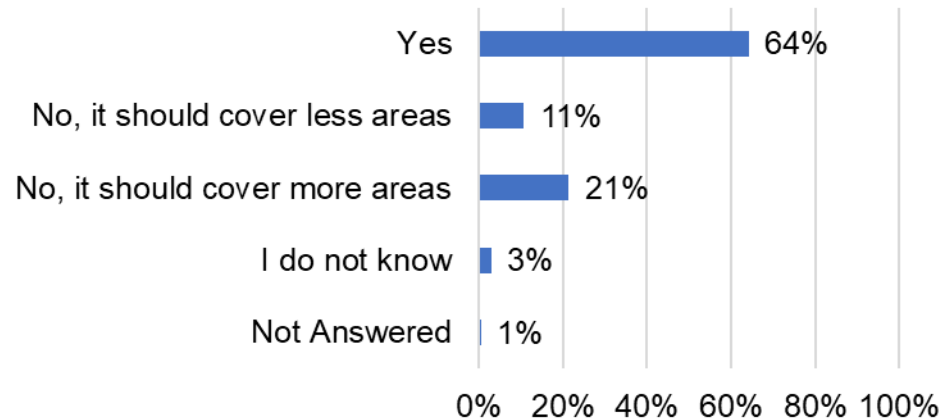
THE ROYAL BOROUGH OF  
KENSINGTON  
AND CHELSEA

# Area covered by the PSPO

Respondents were asked if they support the proposal of introducing the PSPO for the pavement outside South Kensington Station, the pavement outside Gloucester Road Station and the area outside Holland Park at the junction with Kensington High Street.

- **Almost two-thirds** of respondents, 64 per cent agreed that the PSPO should **cover the proposed areas**.
- **Over a fifth** of respondents (21 per cent) said that the PSPO should **cover more areas**
- However, **11 per cent** stated it should cover **less areas** and three per cent selected 'I do not know' for their answer.

**We propose introducing the PSPO for the pavement outside South Kensington Station, the pavement outside Gloucester Road Station and the area outside Holland Park at the junction with Kensington High Street. Do you support this approach?**



*Base: All respondents (168)*

# Locations of antisocial behaviour

After querying respondents about the PSPO areas coverage, the survey then asked whether there were any additional locations they wished to suggest to include. There were 87 comments to this question\*\*. Comments made have been themed by ward and type of location and are summarised in the tables below:

- **Streets** and **open spaces** such as piazzas, pedestrian areas etc. were the **most mentioned**.
- **Courtfield** is the ward with the **most comments**, followed by **Brompton and Hans Town**.

Ward of the location	Count
Courtfield	11
Brompton and Hans Town	8
Earl's court	5
Campden	5
Royal Hospital	5
Chelsea riverside	4
Colville	4
Pembridge	4
Redcliffe	4
Stanley	4
Holland	2
Norland	2
Notting Dale	2

Type of location	Count
Street	22
Open space (piazza-gardens-pedestrian areas-cemeteries etc)	21
Area	16
Park	10
Underground station	8
Whole borough	8
Outside borough	6

\*\* Please note, some comments counted in the Type of location table did not reference any wards, hence the comments count can appear incorrect



THE ROYAL BOROUGH OF  
KENSINGTON  
AND CHELSEA

# Any other comments on the PSPO

Respondents were asked if they had any other comments on the PSPO. There were 52 comments to this question.

Comments made have been themed and are summarised in the table below. Examples of comments can also be seen on the next page, with the full list of themes and comments found in the appendices.

Theme	Count
Happy with PSPO implementation	11
Different solutions proposed/to be found	11
Extend to wider area/whole borough	10
Enforcement/education on the issue crucial	10
Oppose	5
Extend to other wildlife/dog fouling	4
N/A	4
Council should be focusing on different issues	3
Concerns for vulnerable people	2
Specific case	1



# Any other comments

*"The PSPO should be introduced in more areas in RBKC; the square next to All Saints Church on Clydesdale Road."*

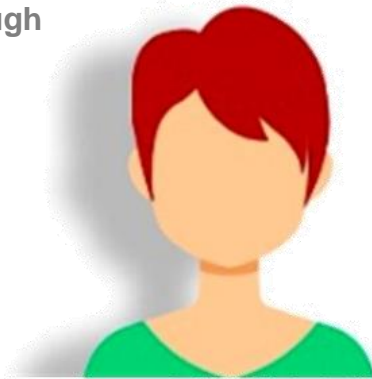
Extend to wider area/whole borough

*"Understanding and connecting with the people who are doing this is crucial to achieving this project. Some may see these pigeons as their only connection to any form of friendship as they may be very isolated, have mental health issues or be doing this for spiritual reasons. These people are a part of this community and will continue to exist (even if you do not want them to be)."*

Concerns for vulnerable people

*"There needs to be effective enforcement."*

Enforcement/education  
on the issue crucial



*"I am shocked by how much time and money you are proposing on spending on this issue when there are far more important matters the council should be addressing."*

Council should be focusing on different issues

*"Good to see RBKC are beginning to tackle this problem but it needs to go further."*

Happy with PSPO implementation

*"This proposal is a joke and should be stopped as soon as possible."*

Oppose

*"There is a difference between wildlife such as rabbits and wild birds such as blackbirds, thrushes etc. and VERMIN such as pigeons, squirrels and foxes. The former should never be fed white bread etc. scattered on the ground while the latter should be controlled by limiting their access to food."*

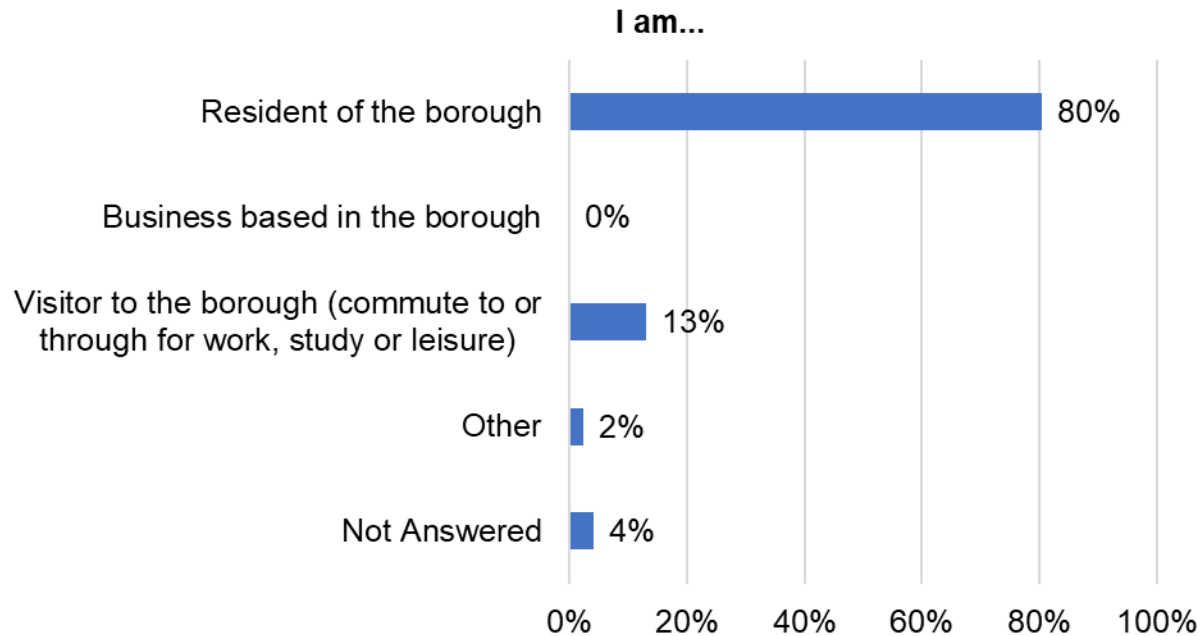
Different solution proposed/to be found



THE ROYAL BOROUGH OF  
KENSINGTON  
AND CHELSEA

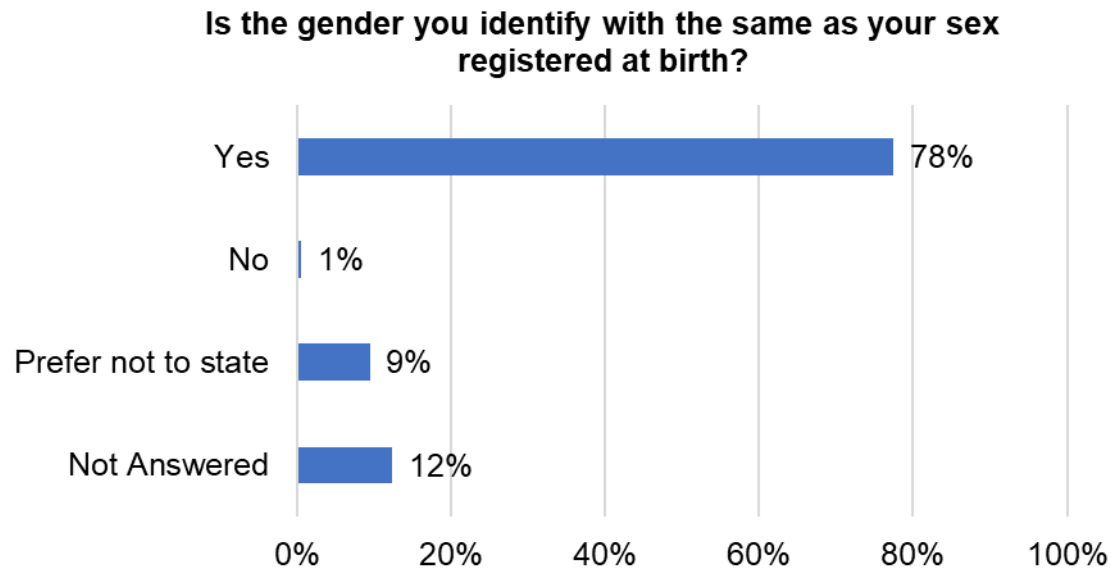
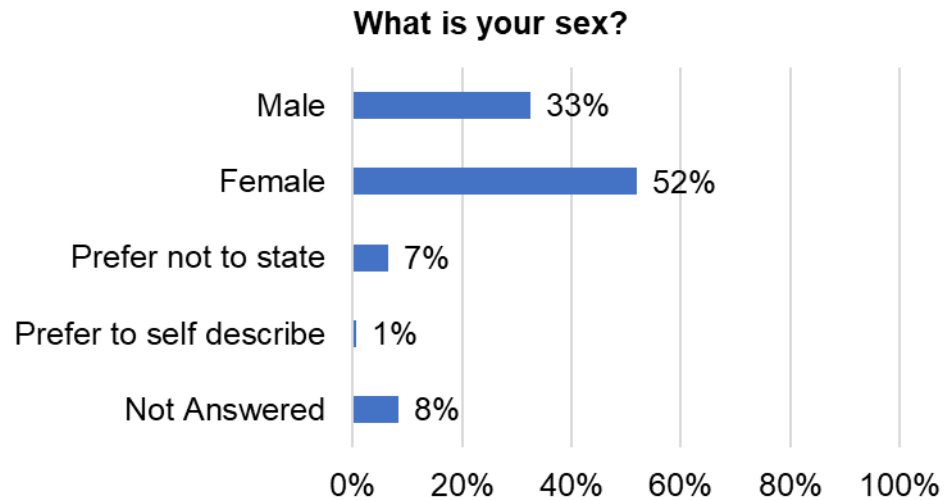
# Profile of respondents

Respondents were asked a series of questions about themselves, to understand who had responded to the consultation.



*Base: All respondents (168)*

# Profile of respondents

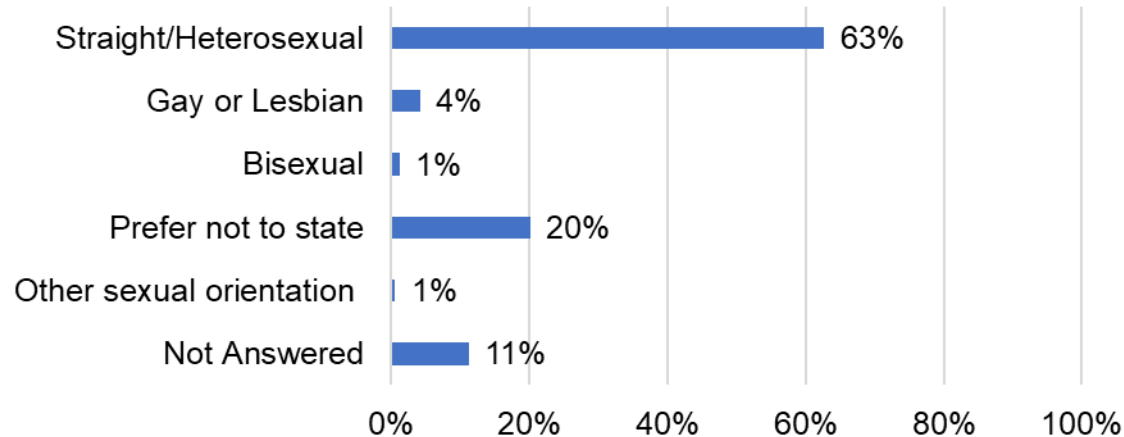


*Base: All respondents (168)*

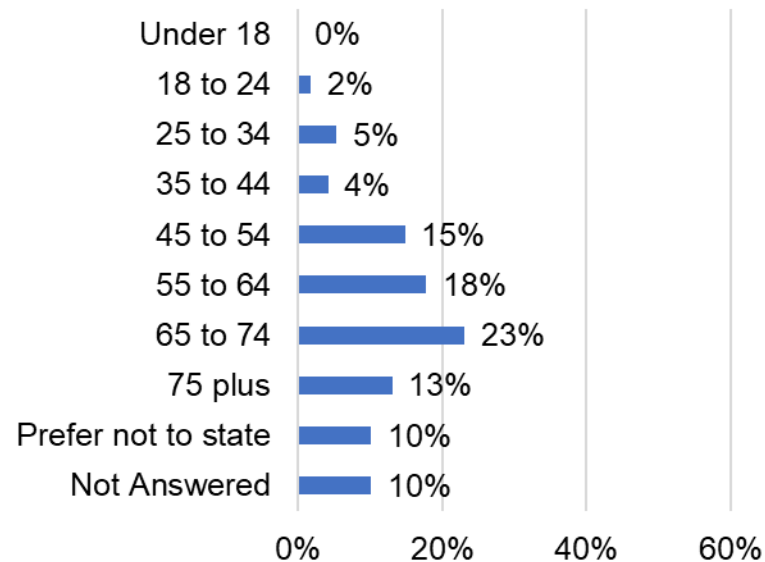


# Profile of respondents

Which of the following best describes your sexual orientation?



Which age group do you belong to?



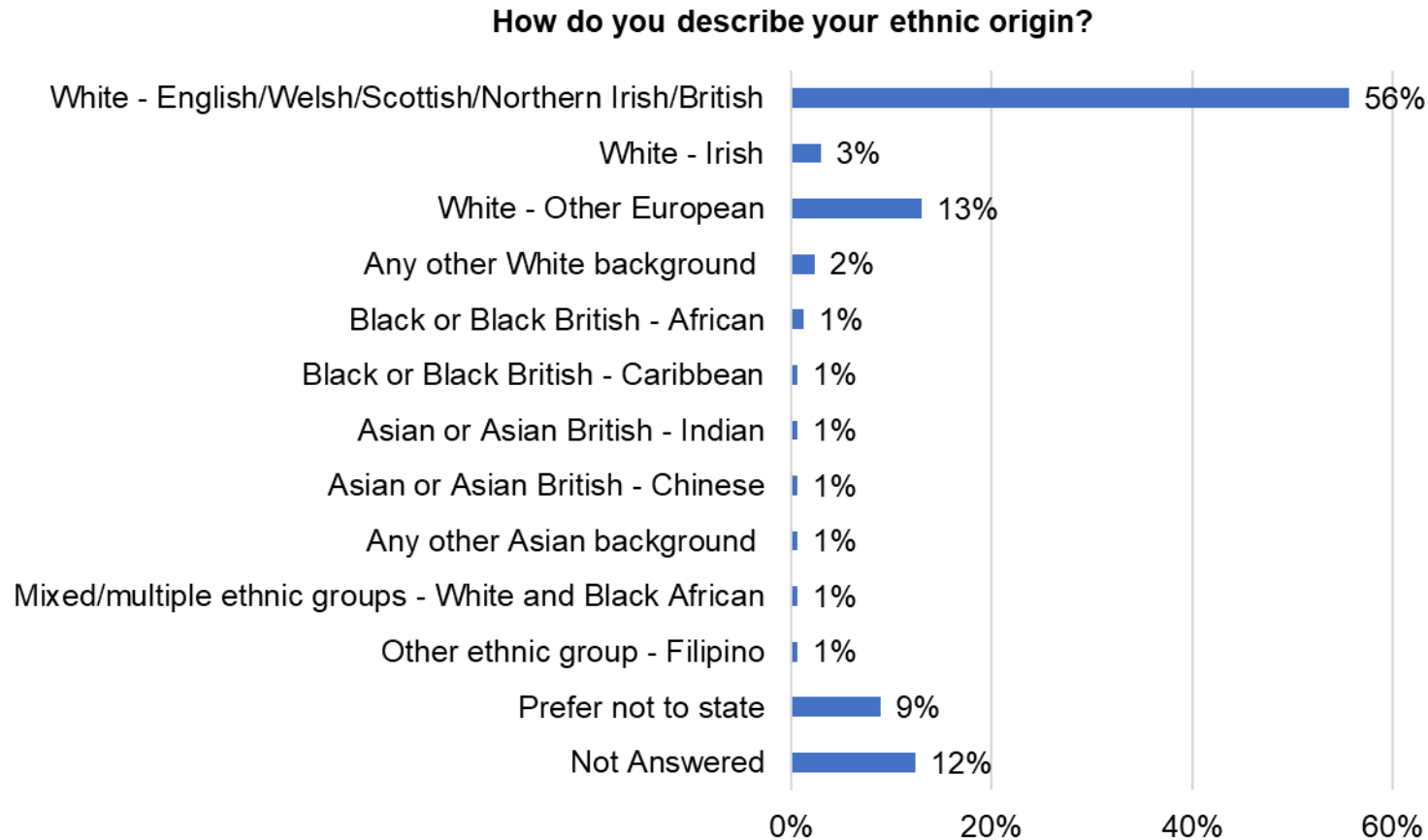
Base: All respondents  
(168)



THE ROYAL BOROUGH OF  
KENSINGTON  
AND CHELSEA

# Profile of respondents

Please note the graph below shows only ethnicities that were chosen by respondents.

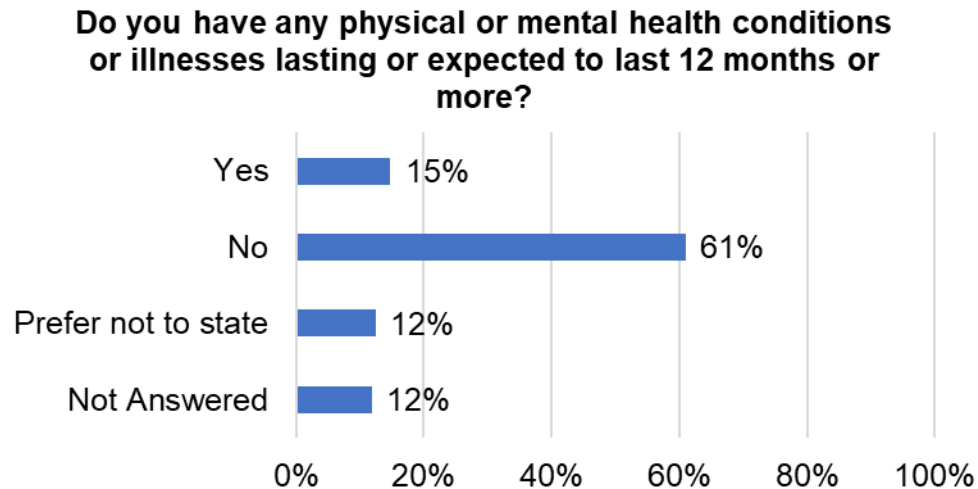
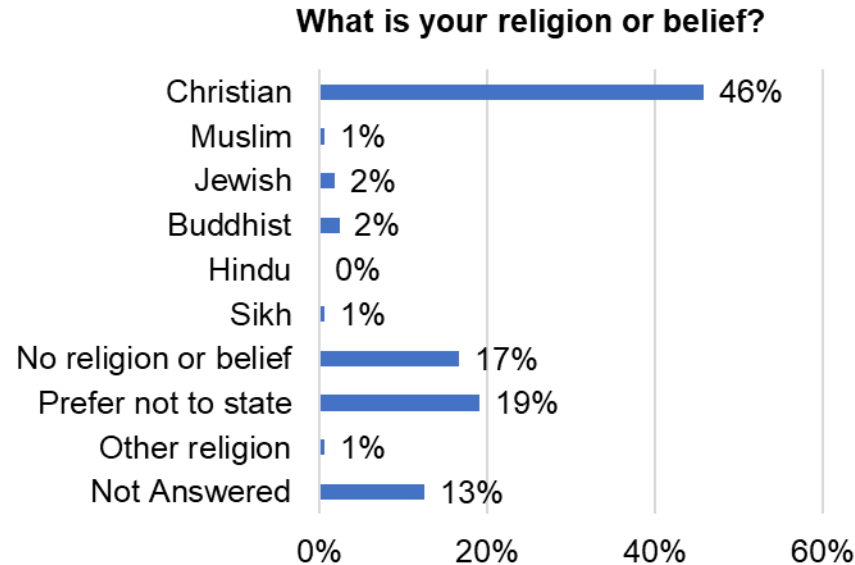


*Base: All respondents (168)*



THE ROYAL BOROUGH OF  
KENSINGTON  
AND CHELSEA

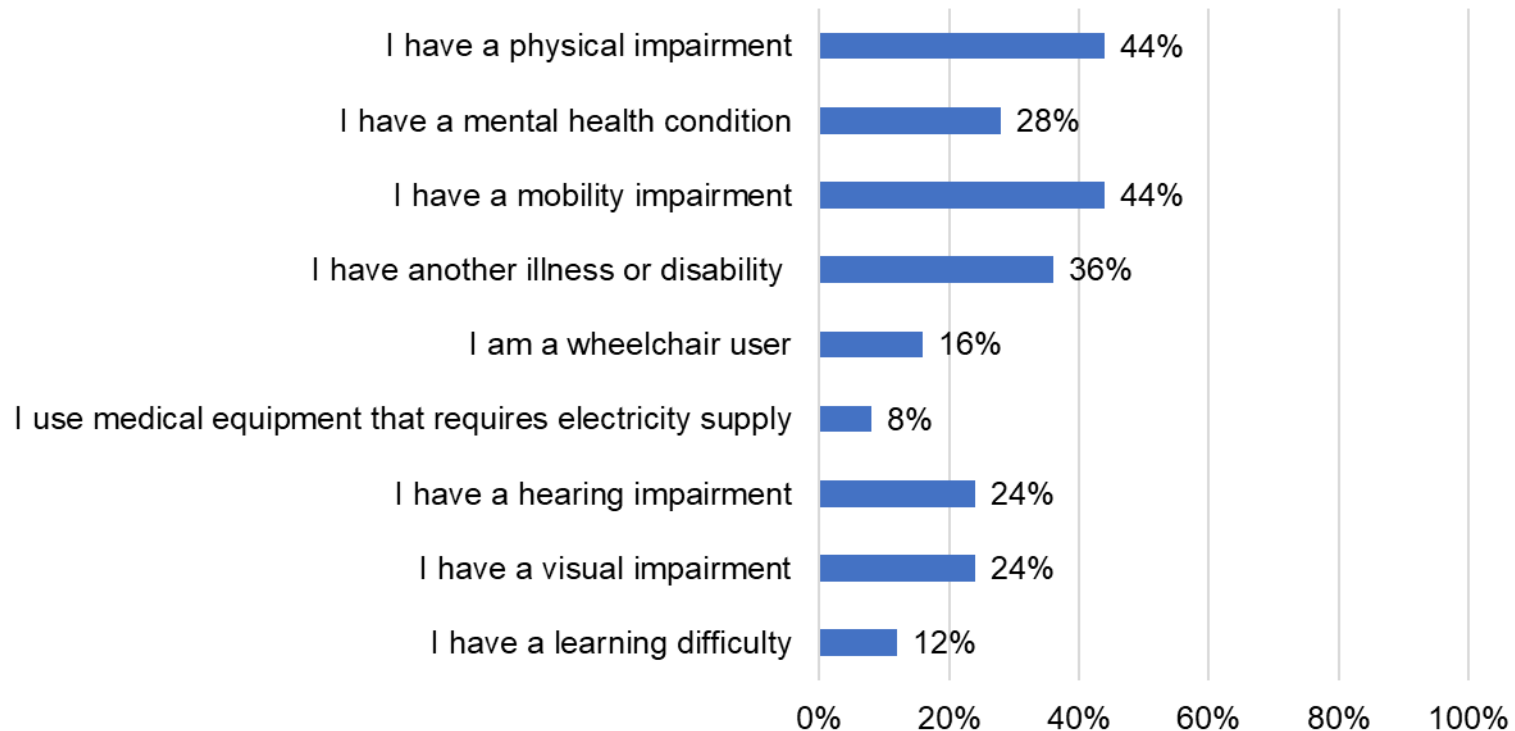
# Profile of respondents



Base: All respondents (168)

# Profile of respondents

**If yes, what is the nature of your physical or mental health condition or illness?**



*Base: Respondents that indicated as having a disability in the previous question (25)*



THE ROYAL BOROUGH OF  
KENSINGTON  
AND CHELSEA