

# Your choice for secondary education

A guide for parents with  
children transferring to  
secondary school in 2024



THE ROYAL BOROUGH OF  
KENSINGTON  
AND CHELSEA

Apply online:  
**[www.rbkc.gov.uk/  
school-admissions](http://www.rbkc.gov.uk/school-admissions)**

The Pan-London eAdmissions site  
opens on Friday 1 September 2023.

If your child was born between  
1 September 2012 and 31 August  
2013, you will need to apply for a  
secondary school place by  
Tuesday 31 October 2023.

# Contents

---

## Introduction

- 4 Welcome**
- 5 About secondary school admissions**
- 5 Introduction to Kensington and Chelsea's secondary schools
- 5 Contacting the Admissions Team
- 6 Pan-London system
- 7 Before you apply**
- 7 Gathering information
- 7 Considering the facts
- 8 Applying for schools outside Kensington and Chelsea
- 9 Key dates**

---

## The application process

- 11 The information you need**
- 11 Closing date for applications
- 11 Proof of address
- 11 Fraudulent applications
- 12 Change of address
- 12 Exceptional need
- 12 Additional forms to complete
- 13 Applications for children living abroad
- 13 Members of the UK Armed Forces and Crown Servants
- 13 Late applications
- 13 Change of preferences
- 13 Your personal information
- 14 Completing your application**
- 14 Guidance on completing your application (paper or online)
- 16 Apply online and save time
- 17 A step-by-step guide to applying online**
- 19 What will happen next**
- 19 How decisions are made
- 20 Notifying you of the outcome
- 21 Waiting lists
- 21 Appeal arrangements
- 21 Making final arrangements for starting school
- 23 Frequently asked questions**

---

## School information

- 26 Overview**
- 26 How to use this section
- 27 Common definitions
- 28 All Saints Catholic College**
- 32 The Cardinal Vaughan Memorial School**
- 36 Chelsea Academy**
- 41 Holland Park School**
- 46 Kensington Aldridge Academy**
- 51 St Thomas More Language College**

---

## Additional information

- 55 Support services**
- 55 In-year admissions
- 55 Fair access protocol
- 56 Educational Psychology Service
- 56 Support for school attendance
- 56 Children with Disabilities Team
- 56 Home-to-school travel
- 57 Special Educational Needs and Education, Health and Care needs assessments
- 58 Free school meals
- 59 14 to 19 education options**
- 59 Sixth form and post-16 education
- 60 Independent schools**
- 60 Independent fee-paying schools

---

## Locations and contacts

- 62 Other authorities**
- 62 Contact details for neighbouring boroughs
- 64 Contact details for diocesan authorities
- 65 The borough of Kensington and Chelsea**
- 65 Locations of Kensington and Chelsea's educational establishments
- 66 Map of Kensington and Chelsea's educational establishments
- 67 Privacy Notice**

# Welcome

### Dear Parents and Carers

Choosing a secondary school is a big decision for you and your child. The last two years has been unique and challenging for us all, so finding the perfect school for your child is as important as ever.

Enclosed in this brochure you will find helpful information on the admissions process and guidance on what you need to consider before you decide which schools to apply to.

You will also find information about the six secondary schools located in Kensington and Chelsea and their admission criteria for entry. You can of course find out much more by visiting the schools on the open days/evenings that they have arranged for you during September and October, and we would encourage you to go to these open days.

Exam results have seen the borough named one of the top both in London and nationally. In 2022, 65 per cent of borough pupils achieved Grades 9 to 5 in GCSE English and Mathematics, compared to 50 per cent nationally.

Kensington and Chelsea is also well above the national average for progress made throughout secondary education in English and in Mathematics.

The excellent reputation, fantastic Ofsted ratings and impressive exam results are all thanks to the hard work of our headteachers, staff and pupils.

I wish your child every success and happiness in their secondary education.



**Councillor Catherine Faulks**

Lead Member for Family and Children's Services  
The Royal Borough of Kensington and Chelsea



# About secondary school admissions

## Introduction to Kensington and Chelsea's secondary schools

This brochure is for parents of pupils aged between 11 and 16, focusing on issues for those with children transferring from primary to secondary school. It provides information about how and when to apply for a place, explains how admission decisions are made and gives information about each school to help parents decide which schools to apply for.

Parents have the option to apply for high-quality community places at three schools: Chelsea Academy, Holland Park School and Kensington Aldridge Academy. The demand for places at all three of these schools is very high. It is therefore important you read the admission criteria for each school to determine the likelihood of gaining a place.

Demand is also high for the three Catholic schools in the borough, All Saints College, St Thomas More and the Cardinal Vaughan Memorial School. Since 2018, All Saints College offers places for boys and therefore presents another school option for families in the north of the borough.

It is important to check the admission criteria for each school to assess whether your child is likely to be offered a place. You can also find information on the number of applications each school received for admission in September 2023. The higher the number of applications, the harder it will be to gain a place, so looking at each school's criteria becomes even more important. You need to be aware the outcome can be different each year depending on the number of applications submitted and the type of cohort that applies (e.g. the number of siblings). This information is therefore provided as a guide to help you to make an informed decision.

When considering your preferences, do not rely solely on what you may have heard about a school's reputation. Visit as many schools as possible on their open days or evenings. Take your son or daughter with you and, if you can, visit the school when it is at work.

Further details about each school can be found from page 25. Each school also issues its own prospectus, available directly from the school.

Many of the questions parents raise are answered in this brochure, but if you need further information, the Admissions Team will be pleased to help.



## Contacting the Admissions Team

The Kensington and Chelsea Admissions Team works in partnership with Westminster City Council as a joint service. The Admissions Team is based at Kensington Town Hall, Hornton Street, London W8 7NX.

✉ [school.admissions@rbkc.gov.uk](mailto:school.admissions@rbkc.gov.uk)

🌐 [www.rbkc.gov.uk/school-admissions](http://www.rbkc.gov.uk/school-admissions)

☎ 020 7745 6432/6433

Lines are open Monday to Friday, 9am to 2pm

# About secondary school admissions

## Pan-London system

All 33 London boroughs, together with councils bordering the capital, use a Pan London system to co-ordinate admissions to their secondary schools.

In 2023, 92,641 secondary school applications were submitted as part of the Pan-London coordinated system. There was a 0.03 per cent decrease in applications for London secondary schools.

This coordinated admissions system is fairer and means more parents are offered one of their preferred schools at an earlier stage and fewer parents receive no initial offer at all. It is also easier for parents to manage, reducing anxiety for you and your children.

## How the system works

Under the Pan-London Co-ordinated Admissions System (PLCAS), all parents must list the schools they want to apply for on their local authority's common application form, ranking them in order of preference. This is important, as potentially only one offer will be made and this will be for the highest-ranked school able to make the offer. This form (either paper or online) is returned to the local authority for the area in which the child lives.

The local authorities taking part in the coordinated system then use a secure computerised system to pass on details of the applications for schools in other areas. They will also co-ordinate the offer of places to make sure no child is offered more than one school place.

The decision on whether a place can be offered will continue to be made by the Admission Authority for each school. When a school receives more applications than places available (also referred to as oversubscribed), its published admissions criteria will be used to decide the order in which applicants will be offered places.

Schools will not be informed of where they are listed on the application form or other schools that have been applied for.

Where a child is eligible to be offered a place at more than one school, the local authority will hold the offer for the highest preference on the parents' form and release all other lower preference offers. These places can then be offered to other applicants. Potential offers are exchanged between local authorities until they are in a position to make the single best offer to parents using all available places. All offers will be made on the same day: **Friday 1 March 2024**.






## Before you apply

### Gathering information

To make an informed decision about which secondary schools to apply for, you are advised to read the information about the schools in this brochure and research the schools you are interested in applying to.


#### You are advised to:

- Contact schools you are interested in directly to ask for a copy of their prospectus which will provide you with detailed information.
- Visit schools' own websites to find out more detailed information. If you want to find out about Ofsted reports for Kensington and Chelsea schools visit [www.ofsted.gov.uk](http://www.ofsted.gov.uk) 
- Check how places were offered last year for schools that offer on distance by viewing the 'Distance maps' on the Council website: [www.rbkc.gov.uk/school-admissions](http://www.rbkc.gov.uk/school-admissions) 
- Arrange to attend schools' open days and evenings. These can be found in the individual school section of this brochure.
- Talk to your child's primary school headteacher. They will have experience of previous transfers.
- Contact the Admissions Team for advice if you are unclear as to how the system works on 020 7745 6432 or email [school.admissions@rbkc.gov.uk](mailto:school.admissions@rbkc.gov.uk) 

### Considering the facts

Many schools receive more applications than they have places (also referred to as oversubscribed). To avoid disappointment you should consider whether your child has a realistic chance of gaining a place at your preferred school/schools.

#### You are advised to consider the following:

- Look at how many applications were made for your preferred school/schools last year compared to how many places were available. This information can be found in the individual school section of this brochure. The same information can be found for schools in other boroughs in their equivalent brochure. It is important to note the pattern of admissions can vary from year to year. As an example, living within the distance in which places were offered in a previous year does not guarantee a place will be offered in this year or future years.
- As indicated above, you can also view the distance maps located on the Council website. Maps are also available for schools located in Westminster, visit [www.westminster.gov.uk/admissions](http://www.westminster.gov.uk/admissions) 
- You must read the admission criteria for the school/schools you would like to apply to. The criteria will determine the order of priority for each applicant. As an example, church schools will prioritise applicants who meet the respective faith criteria if that school receives more applications than places available.



# Before you apply

- Not all schools give priority to children with siblings already attending the school so you will need to check the admission criteria.
- All church schools (and some Academies and foundation schools outside the borough) have additional supplementary forms to complete, which are available directly from the schools. Supplementary information forms must be returned to the school. The schools in Kensington and Chelsea that require you to complete supplementary forms will be indicated in the school section.
- Within the schools section, you will see how many appeals were submitted for each school and the numbers that were successful, which will be very few. Be realistic: remember you can state up to six preferences. Even after you have researched the schools and you have decided where to apply, you should not assume your child will be offered a place. You should also consider other schools where you know you will have a good chance of gaining a place. Naming other schools will not affect your chances of being offered a place at a higher-preference school.
- Schools are not informed of other preferences you have made or the order you place them.
- The preferences you make are treated equally. This means no matter where you place a school in your list of preferences, it will be treated in the same way as all other applicants who also chose that school, regardless of where they have placed the school in their list.
- The reason it is so important to list the schools in your order of preference is that when results are returned to the Admissions Team, we may receive offers for more than one of your preferences. As only one offer can be made to your child, you will be offered the highest school possible from the list you provided. Any offers made lower in your list will be withdrawn and put back in the system. Take special care how you order your preferences.

## Applying for schools outside Kensington and Chelsea

You may also wish to consider schools outside the borough. Under the coordinated system, Kensington and Chelsea residents can apply for schools anywhere in London and this will need to be listed on your application.

Detailed information about schools outside of the borough will be available directly from the schools and the local authority for the area in which they are located.

The contact details for all London boroughs are provided from page 62. Please remember to check the admission criteria to assess whether your child is likely to be offered a place.





# Key dates

**From Friday 1 September 2023**

You will be able to apply online at:

**[www.rbkc.gov.uk/school-admissions](http://www.rbkc.gov.uk/school-admissions)** 

Paper applications will be available from the Admissions Team on request.

The *Your choice for secondary education* brochure will be available online from September.

**Tuesday 31 October 2023**

### **Closing date for applications.**

If you are applying online, you will have up until 11.59pm on Tuesday 31 October to submit your application.

If you are applying on a paper form you will need to ensure your application is received by the Admissions Team by 5pm on the closing date.

**Friday 1 March 2024**

### **National offer day.**

All resident applicants that applied online will receive an email notification during the evening if they applied online.

An outcome letter will be posted on Friday 1 March to all those that applied on a paper form and did not provide an email address.

**Friday 15 March 2024**

Deadline for successful applicants to accept or decline their school offer.

**From Friday 29 March 2024**

Waiting list positions for schools held by the Admissions Team will be available.

Further offers will be made as result of withdrawals and late applications for schools with vacancies from this date.

**May 2024**

Appeals to be submitted within three weeks of application outcome. Appeals will be heard over June-July.

**June/July 2024**

Appeals are managed by an independent service and are heard by an independent panel.


Voluntary aided, Academies and Free Schools will also arrange for appeals to be heard before the end of term.

# The application process



# The information you need

## Closing date for applications

**The closing date for secondary school applications is Tuesday 31 October 2023.** For all the reasons detailed on page 16 it is highly recommended you apply online at: [www.rbkc.gov.uk/school-admissions](http://www.rbkc.gov.uk/school-admissions) 

If you would prefer to complete a paper form, you must return it by the closing date to the address shown on the form. If you would like confirmation we have received your application, please indicate this when you submit the form. Make sure you use the correct postage if you return your form through the post. Incorrect postage may delay your application, preventing it from reaching the Admissions Team by the closing date.

## Proof of address

The address you provide on your application must be your child's permanent address on close of applications, **Tuesday 31 October 2023**. You must not use a business address, childminder's or relative's address, or any address other than your home address. Only in circumstances where the relative or carer has legal guardianship and is the main carer will a different address be considered as the main residence. Evidence will be requested to support this arrangement.

If you have a genuine 50/50 share care arrangement with your child's other parent, it will be for you to determine the address that will be used as the main address for your child's application. Only one address will be used throughout the application process. If you are unable to agree on which address to use, the address of the parent making the Child Benefit claim will be used for the purpose of the application. In the situation where there are ongoing Family Court proceedings, the Council will consider the approach to be taken for processing on a case by case basis.

You do not need to provide us with documentary evidence of your address. Your details will be cross-referenced with internal council databases, and if we are unable to verify your address we will contact you for more information. If you are not registered to pay council tax, either because you are not liable or have recently moved, you will be asked to provide one of more of the following:

- A mortgage statement/tenancy agreement.

- A recent utility bill or, if you have moved, your closure bill at your previous address.
- A Child Benefit/Inland Revenue document (if entitlement applies).
- For members of the UK Armed Forces and Crown Servants, an official letter confirming the address of your quarters. This can be provided before you have relocated to ensure your application is not disadvantaged.

If you own or rent more than one property, you should state this on your form. You will also need to provide proof of residence and occupancy for the address at which your child lives most of the time and is considered as the main family home. If you move into a second property for a temporary period purely for the purpose of trying to be nearer to a school, we will use your normal, permanent residence for the purpose of processing the application.

## Fraudulent applications

The Council takes very seriously any attempt to obtain a school place by fraud. All cases are fully investigated and the use of internal and external agencies has improved detection rates. Council officers will carry out unannounced address visits as appropriate.

If you know someone who intends to or has used a false address to get a school place, you can report this confidentially to the Admissions Team on 020 7745 6432 or email: [school.admissions@rbkc.gov.uk](mailto:school.admissions@rbkc.gov.uk) 

You do not need to give your name but please provide as much information as possible so that we can investigate the matter fully.

If we find a school place was obtained using a false address we will withdraw the offer, even after the child has started school, and re-offer to a child who was entitled to the place. If it is decided not to remove the offer, normally when the child has been on roll for more than one term, any future sibling link will not apply.

# The information you need

## Change of address

Any offer made to your child on **Friday 1 March 2024** is based on the address you indicated on your application. If you do not inform us of a change of address, any offer that is made to your child for a school that you would not have been eligible for will be withdrawn.

**You must notify the Admissions Team if you move address.** Your new address will not be updated until proof has been provided. If you move **after Tuesday 12 December 2023**, your address will not be updated as the process for allocating places would have already started. We are able to send you correspondence to your new address, but your application will be processed using the address you submitted at the close of applications.

## Exceptional need

All schools have experience in dealing with children with diverse needs. These may be educational, medical and/or social needs. However, in a very few exceptional cases there may be reasons why a child may need to attend a specific school. If you feel there are exceptional reasons for your child to be considered for a priority placement at a particular school, you must indicate this in the area provided in your application, giving reasons supporting your case. Please be aware not all schools have this criterion in their policy, so it is advised you check this first.

All requests for priority consideration must be supported by a professional, such as a doctor or social worker, who must clarify which school you are making a special case for, the reason why it is necessary for your child to attend this school in particular and the difficulties it will cause your child to attend another school.


It is for you to decide how to support your case and what documents to provide, but these must be submitted by the closing date **Tuesday 31 October 2023**. The Admissions Team is not responsible for contacting professionals for information about your case and any decision will be based on documents you submit by the closing date.

For own Admission Authority schools, and schools located in other areas, any additional documentation you provide will be passed on for the respective school's attention via the secure Pan-London system.

The notification date is **Friday 1 March 2024**. You will not be advised before this date whether your request for priority is agreed. If priority is not granted, your application will be considered against the remaining criteria for the requested school.

It is important to be aware that few cases are agreed under this category. The Admission Authority must be able to justify awarding priority for a child above other applicants. It will need to be agreed by those making the decision that the professional support provided clearly makes a case that the needs for the child can only be met at the school required as opposed to another local school.

## Additional forms to complete

All Kensington and Chelsea voluntary aided schools have additional Supplementary Information Forms (SIF) and/or a Priest Reference Form or Certificate of Catholic Practice (CCP) to complete, which are available directly from the schools or at [www.rbkc.gov.uk/school-admissions](http://www.rbkc.gov.uk/school-admissions) 

These forms are necessary for the school governors to determine whether applicants meet their faith requirements or other criteria. If you are applying for a place on religious grounds, you will be required to provide proof of your church attendance and/or religious commitment on the SIF.

The SIF and all additional documents required must be returned to the school. The same will apply for church schools located in neighbouring local authorities.

If you name the school on your application and do not complete a SIF, your child will be considered but it will reduce the chance of your child being offered a place. The school will not have any information to consider when judging your application against its admission criteria and, as such, your application will be ranked very low when decisions are made. It is therefore important you complete both forms.

# The information you need

## Applications for children living abroad

Applications submitted by resident families working or temporarily living abroad will be processed with all other applicants and must be submitted by the closing date.

The address where the child is living at the time of application, and at the closing date, will be used for the purpose of processing. The applicant must inform the Admissions Team on their return for the address to be updated. Proof of address and occupancy will be required.

## Members of the UK Armed Forces and Crown Servants

For families of service personnel (UK Armed Forces) and Crown Servants, the Council will ensure that your application to school is not disadvantaged if you are not living in the area at the time you are required to apply.

In order for your application to be processed alongside all other applicants, you will need to provide an official letter that declares a relocation date. Your application will be processed using the address at which your child will live when applying the school's oversubscription criteria, including the use of a Unit or Quartering address if requested. You will need to provide some evidence of the intended address. Further guidance is provided by the Department for Education in their publication **Admission of children of crown servants** [↗](#)

## Late applications

If you apply after the closing date without a valid reason, your application will only be considered after the offer date: **Friday 1 March 2024**. Your child's name will be added to waiting lists along with those unsuccessful applications considered in the initial allocation round.

If there is an exceptional reason for applying after the closing date and **by Tuesday 12 December 2023** (for example, you have just moved to the area), it may be possible to consider your application with those that were made on time. Other circumstances will be considered and each case decided on its own merit.

Examples of reasons that **would not** be accepted include failure of a primary school to remind a parent to apply, late return from a family holiday or non-receipt of an application form due to postal issues. You are advised to contact the Admissions Team as soon as possible if submitting an application after the closing date.

## Change of preferences

If you wish to change the order of preference of schools listed on your application form, and you applied online, you can log back in to your account to change/add/delete preferences up until the closing date.

If you did not apply online, you must email **school.admissions@rbkc.gov.uk** [↗](#) or write to the Admissions Team before the closing date.

It is not normally possible to accept any changes after the closing date. If you do want to add preferences or change your order of preferences after this date, you must inform the Admissions Team as indicated above. In most cases, new or changed preferences will be considered only after all other applications have been considered.

## Your personal information

The Council will handle information you have provided for school admission purposes in accordance with General Data Protection Regulations (GDPR).

Please refer to page 67 for the full Privacy Notice.

# Completing your application

## Guidance on completing your application (paper or online)

The online application is set out in a similar way to the paper form. The following guidance applies to both:

- Naming only the school you most want for your child will not increase his or her chance of being offered a place. It is therefore advised you name further preferences and ones you consider to be realistic options.
- If we receive more than one application for your child, the most recently dated application will be the one we process.
- Because of the demand for places at the most popular schools, your child may not be offered a place at your first preference.

### Your child's name

Please write your child's name clearly and use the same name you have registered with your child's primary school.

### Your child's date of birth

You should only be applying if your child is currently in Year 6 in primary school and their date of birth is between 1 September 2012 and 31 August 2013. If your child is in Year 6 and does not fall in this birth range, please speak to your primary school headteacher before completing the application.

### Your child's home address

The address you give must be your child's permanent address on the closing date for applications. Please see page 11 for more information.

### Your child's primary school

You must include the name of the primary school your child currently attends. If your child is being educated at home, please state this in the space provided.

### Details of parent or carer

This section needs to be completed by the parent or carer of the child, who will also need to indicate they have parental responsibility. Only one parent needs to complete this section but you can indicate the name of the other parent in the space provided if you wish.

### Relationship to child

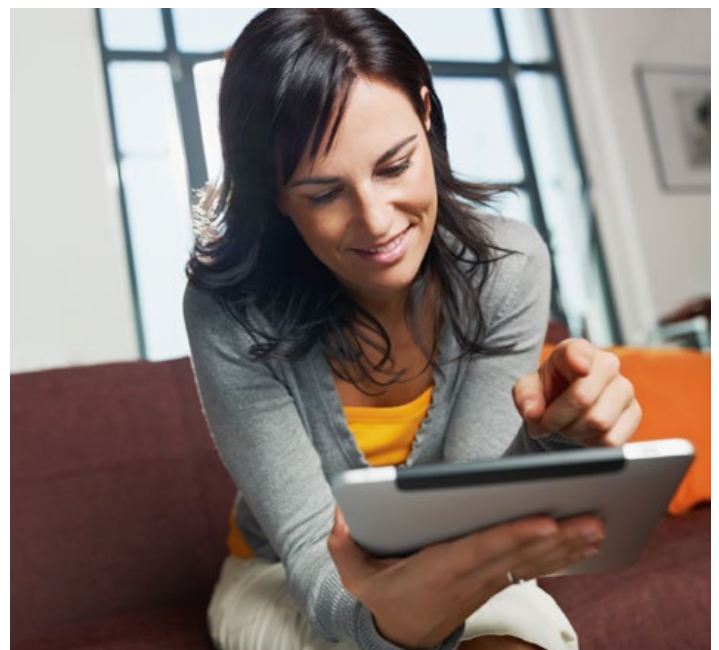
Please indicate your relationship to the child (e.g. mother, father, grandmother, foster carer).

### Children with an Education, Health and Care (EHC) plan

You do not need to complete this application if your child has an EHC plan as there is a separate process that is outlined on page 57 in this brochure. If your child is in the process of being assessed for an EHC plan, please complete this application and make us aware of the circumstances. Doing so will ensure the school that is eventually offered to your child is fully aware before admission and can plan accordingly to be able to meet your child's needs.

### Looked After Children

Looked After Children (also referred to as in "Public Care"), and children who have been adopted or made subject to a child arrangement order or a special guardianship order immediately after having been Looked After. The child's social worker/adoption agency must submit a letter to the Admissions Team confirming the legal status of the child and the local authority to which the child is/was in care, and quoting the child's full name and current address. This priority also applies to children that were in state care outside of England prior to being adopted.



# Completing your application

## Exceptional need

All schools have experience in dealing with children with diverse needs. These could be educational, medical and/or social needs. However, in very few exceptional cases, there may be reasons why a child may need to attend a specific school. Please refer to page 12 for further information.

## School preferences

You can list up to six state maintained schools, including any voluntary aided (church) schools, foundation schools, Free Schools and Academies, and any schools in neighbouring local authorities, in order of your preference. Please do not name independent/private fee-paying schools on this form – applications to these must be made separately.

You do not have to name six schools, but it is strongly advised you should name as many preferences as possible and include at least one school where you have a good chance of being offered a place.

You will need to read the admission criteria for the schools to determine the likelihood you have of gaining a place. Applying for only one school will not improve your chances of gaining a place at that school.



## Siblings (brothers or sisters)

If your child has a brother or sister who is currently on roll, and will continue to be so, at one of your preferred schools at the time of admission for the child you are applying for, you must include their details where requested. Relatives such as cousins, uncles and aunts are not considered as siblings, even if they are living at the same address. Please be aware the definition of sibling can vary, so you are strongly advised to check with relevant boroughs or schools for their definition and if the school gives priority to siblings.

## Siblings of former pupils

Some schools give priority to siblings of former pupils in their admission criteria. This does not apply to all schools, so check the criteria for the school you are applying to. If you are applying under this criterion please list the name and date of birth of the former sibling and the school they attended in the relevant box.

## Children of school staff

Some schools give priority in their admission criteria to children of staff. This does not apply to all schools, so check the criteria for the school you are applying to. Please indicate in the relevant section if you are applying under this criterion, naming the school you are applying for. You must also provide supporting evidence from the school.

## Reasons for preference

Please note schools can only use their published admission criteria to decide which children qualify for a place. It is therefore not necessary to give reasons for your preferences. If, however, there are medical or social reasons why your child should attend the school you have named, please indicate these, as outlined above.

## Declaration and signature of parent or carer

You must sign your application to certify you have parental responsibility for the child for whom you are applying and the address on the application is the main residence of the child. If you provide any false or misleading information on the application or in supporting papers, or withhold relevant information, it may render your application invalid and lead to the withdrawal of an offer of a place.

# Completing your application

## Apply online and save time

If you are a Kensington and Chelsea resident you must complete a Kensington and Chelsea common application to apply for a secondary school place. We recommend you apply online at:

[www.rbkc.gov.uk/school-admissions](http://www.rbkc.gov.uk/school-admissions) 

The Council will co-ordinate the admission process with the other 32 London boroughs and neighbouring authorities to ensure no child receives more than one offer of a place at a secondary school in London on **Friday 1 March 2024**. The one offer received will be for the highest preference school for which your child is eligible.

You will have the opportunity to express a preference for **up to** six secondary schools, Academies and Free Schools, including schools outside the borough. You must list them in order of preference. This means you should put your first preference (i.e. the school you most want your child to go to) at the top of the list, your second preference below and then continue adding any further preferences you would like to make. It is vital you put your school preferences in the order you would like them.

## Applying online can be done in five easy steps.

### Why apply online?

- It is quick and easy to do.
- You can log back on to change or delete preferences up until 11.59pm on the closing date (ensure you resubmit your application if making changes).
- You are able to attach additional documents.
- You can register your mobile phone number to receive reminder alerts.
- After validating your email address you will automatically receive a confirmation email once you submit your application.
- During the evening of **Friday 1 March 2024** you will receive an email informing you that your outcome is available. Please wait until you have received the email before logging onto the Pan-London eAdmissions website.
- You will be able to accept or decline an offer of a school place online.





# A step-by-step guide to applying online

To start your online application visit:

[www.eadmissions.org.uk](http://www.eadmissions.org.uk)

Or use the link from the Council's website:

[www.rbkc.gov.uk/school-admissions](http://www.rbkc.gov.uk/school-admissions)

## 1

- Click on **'Create a new account'** and enter your details. If you have previously applied using the online system you will be able to log in without the need for registration.
- You will be asked to create a password. Pick something secure but memorable. You will need to log in to the account to get the outcome of the application in March.
- You can then specify up to three security questions. This is optional, but will enable you to reset the account yourself if you forget your password.
- Read the Kensington and Chelsea terms and conditions/privacy notice and tick the box.

### New Account

Please enter your details below.

Title \*

Mr

First name \*

John

Last name \*

Smith

Postcode \* 

1 MY STREET  
LONDON  
W8 1XX

- Click **'Start Application'**.
- Make sure you enter your permanent address only. This will be verified against Council records.

## 2

## 3

- Enter your child's details. Make sure you enter the information accurately.
- Make sure that you only apply for a child born between 1 September 2012 and 31 August 2013.
- If you enter a date of birth outside of this range you will not be able to progress to the next step.
- If you have twins or triplets you must remember to create a separate application for each child.

### Child details

Child's name must be as it appears on their birth certificate

First Name \*

First Name

Middle Name

Middle Name

Last Name \*

Last Name

Date of Birth \* 

01

01

2013

# A step-by-step guide to applying online

## 4

- Add your school preferences by first selecting the local authority that each school falls within.
- **Make sure that you read the schools' admission criteria.** This will be a guide as to the likelihood of being offered a place at the school you are interested in.
- Select and add the schools you wish to apply for. You can apply for up to six schools.
- For each school selected you will be asked a number of questions (such as whether there is a sibling at the school). Make sure you answer the questions correctly.
- If you tick the social/medical box please ensure you provide additional documents either by attaching them to the application (after submitting) or by sending them to the Admissions Team.

### Add schools

Find schools to add to your application from:

- List of schools ⓘ  Map ⓘ  Keywords ⓘ

#### Select a Local Authority

Kensington and Chelsea ▾

#### Select a school

--- Please select --- ▲

Start typing a school name

All Saints Catholic College  
Chelsea Academy  
Holland Park School  
Kensington Aldridge Academy  
St. Thomas More Language College

## 5

- Check all of the details entered are correct.
- Read the declaration and tick the box to accept it.
- Click the **'Submit Application'** button.  
**You must click the submit button by the closing date of Tuesday 31 October 2023. If you do not do this, your application will not be processed.**
- Once you have submitted your application you will be able to attach documents.
- You will receive an email confirmation.

### Remember:

**If you apply online, you must not complete a paper application form.**

### By submitting this form I agree to the following:

- I have read the admissions guidance issued by the Local Authority for each school I have selected.
- I wish to apply for a place at each of the schools named above and have listed these in my order of preference.
- I will keep the Local Authority informed of **any** change of circumstances (e.g. change of address) and failure to do so may make this application invalid or lead to the offer of a place being withdrawn.
- I understand that the Local Authority may take steps to verify any information relating to this application.
- I understand that any false or deliberately misleading information given on this form and/or supporting information may make this application invalid or lead to the offer of a place being withdrawn.
- I understand that the Local Authority where I live is under a duty to protect the public funds it administers and may therefore share the information I have provided in this application within the Local Authority and with other bodies administering public funds, for the detection and prevention of fraud.

I have read and accepted the above declaration

I have read and accepted the The Royal Borough of Kensington and Chelsea [terms and conditions](#)

Submit application

# What will happen next

## How decisions are made

### The process

The Admissions Team will process any preferences you have made for Kensington and Chelsea schools and pass on your child's details to schools that are responsible for their own admissions. If you have applied for schools that are not located in the borough, your preference/preferences will be passed to the local authority that maintains those schools. At the same time, the Admissions Team will receive applications for Kensington and Chelsea schools from residents in other local authorities. All these operations will be carried out via the Pan-London Co-ordinated Admissions System.

The order of your preferences is not revealed to the schools. This information is only known by your home local authority and the authority where the schools are located.

If any school has more applicants than places available, the published admission criteria will be used to decide the order in which applicants will be offered places. The same process is carried out across London and decisions are made by all Admission Authorities by a common deadline and relayed back to the home local authority. This co-ordinated process eliminates multiple offers and will result in your child being offered the highest potential school you named in your list of preferences (if an offer can be made). Examples are shown in the tables below.

You need to be realistic when deciding your school preferences. The following are examples of why an offer may not be made to your child if a school is oversubscribed:

- Other applicants live closer to the school and distance is the tie-breaker.
- You applied for Church school/schools but other applicants met a higher faith category requirement which meant lower categories in the criteria were not reached.
- You live outside of a priority area for a school. Places can only be offered beyond the area if places are available.
- You live close to the school or met the faith criteria but the tie breaker used is random allocation (lottery).

A breakdown of last year's admissions to each Kensington and Chelsea school is included in the schools section of

this brochure. You will find this information is available for all schools in the respective local authority brochure, which can be accessed online (neighbouring London local authority website addresses and contact details can be found on page 62).

### Example 1

Preference rank	School	Potential offer?	Outcome
1st	School A	Yes	Place offered
2nd	School B	Yes	Withdrawn as higher offer met
3rd	School C	No	Withdrawn as higher offer met
4th	School D	Yes	Withdrawn as higher offer met
5th	School E	No	Withdrawn as higher offer met
6th	School F	Yes	Withdrawn as higher offer met

### Example 2

Preference rank	School	Potential offer?	Outcome
1st	School A	No	Placed on waiting list
2nd	School B	Yes	Place offered
3rd	School C	No	Withdrawn as higher offer met
4th	School D	Yes	Withdrawn as higher offer met
5th	No preference made	N/A	N/A
6th	No preference made	N/A	N/A

# What will happen next

## Notifying you of the outcome

If you made your application online, you will be able to log on to the eAdmissions site using your username and password during the evening of **Friday 1 March 2024** to view the outcome of your application and accept or decline any offer made. You will also be provided with a link to access a PDF version of your outcome letter. Letters will only be sent in the post to residents that completed the paper application form. These letters will be sent on Friday 1 March first class.

If you are not offered your first preference school, you will be provided with the following information:

- The name of the school that can offer you a place. If it has not been possible to offer any of the schools you applied for, the nearest alternative school will be offered to you, if there is one available.
- That any preferences for schools listed lower than the school offered have been withdrawn.
- How to accept the place you have been offered. You should not reject the place unless you have a place secured elsewhere and should indicate the name of the alternative school online (or on the paper reply slip).
- If you have not been offered one of your school preferences, the reason why and who to contact for further information\*.
- Waiting list and appeal information and who to contact for further details.
- The details of schools which have vacancies, if you did not receive an offer for any of your preferences and you do not want to accept the alternative school offered to you.



\*The notification letter does not go into the detail of why a place could not be offered and can only inform you that your child did not receive a high enough priority in the oversubscription criteria. You will be able to obtain more detailed information from the local authority where the school is located or the school itself if it is its own Admission Authority. Please contact the Admissions Team in the first instance. They will be able to advise you.

# What will happen next

## Waiting lists

Your child's name will automatically be added to the waiting list for any Kensington and Chelsea schools that could not be offered. Any schools you named as a lower preference than the school offered to your child would have been withdrawn under the co-ordinated arrangements. You will need to re-apply to these schools if you want your child to be included on a waiting list.

If you have not been offered a place at a school in another borough and require waiting list information, you will need to contact the school or the borough that maintains the school.

All waiting lists are ordered in accordance with the published admission criteria for each school and will be offered to children as vacancies arise with no differentiation between on-time or late applications.

Waiting list positions will be available from **Friday 29 March 2024** for All Saints Catholic College, Chelsea Academy, Holland Park and Kensington Aldridge. The Admissions Team are the first point of contact for waiting list positions for these four schools up until the end of the summer term. Each school will manage their own lists from **Sunday 1 September 2024**. Updates for Cardinal Vaughan and St Thomas More will need to be made directly with the school. Waiting lists for the remaining schools in the borough are the responsibility of the respective schools. You will need to contact the school directly for an update of your child's waiting list position.

As a result of vacancies arising, the governors or Admissions Team on behalf of the school will determine who is offered the next place/places in accordance with the published admission criteria and waiting list ranking. You will be notified of any offer that can be made by the Admissions Team from **Friday 29 March 2024**.

A child's position on the waiting list can go down as well as up. For example, if a new application is submitted and they meet a higher priority against the admission criteria for the school, the waiting list will need to be revised to include the new applicant. The offer of a place does not depend on the length of time your child's name has been on the waiting list and there can never be any guarantee a place will be offered.


You will be contacted at some point during the academic year to indicate continued interest to remain on the waiting list. If you do not respond, your child's name will be removed from the list unless you inform us otherwise. This exercise is carried out to ensure waiting lists only ever include children who would take up an offer for a school if it became available.

## Appeal arrangements

You can make an appeal to each school where your application has been unsuccessful. Appeals are heard by an independent panel. The school will explain to the panel why a place could not be allocated to your child. You will then be heard by the panel and will need to show the school's published admission arrangements were not correctly applied or there are special reasons why your child should be given a place even though the school is full.

More detailed information about admission appeals is available at [www.rbkc.gov.uk/school-admissions](http://www.rbkc.gov.uk/school-admissions) 

Guidance will also be provided with your appeal form should you decide to pursue this right.

If you would like to seek independent advice you may wish to contact the Child Law Advice Service which provides free legal information, advice and representation to children, their families and carers. Please see their website [www.childlawadvice.org.uk/school-admissions](http://www.childlawadvice.org.uk/school-admissions)  for further details or call **0300 330 5485**, Monday to Friday for advice.

## Making final arrangements for starting school

The headteacher of the secondary school where your child has been offered a place will invite you to visit the school before the end of the summer term 2023. You will have the opportunity to look around the school and to discuss questions such as school uniform, books, travel arrangements, midday meals and possible financial help.

By the start of the summer holidays, the arrangements for your child's transfer to a new school should have been completed so they can look forward to starting there in September.

## What will happen next

### **Vaccinations**

It is important that all students are up to date with their vaccinations prior to starting school. If you have missed a vaccination, or are not sure, you can ask at your GP practice and make an appointment. It is never too late to catch up on missed vaccinations.

We strongly recommend that all students receive the additional vaccinations that are offered during the school years to protect against cancers (HPV), meningitis (MenACWY) tetanus, diphtheria and polio (Td/IPV). These are usually offered through the school.

Vaccinating your child will protect them against serious infectious diseases and will also help to protect the other pupils and teachers at school as well as the wider community. This means pupils and teachers will have fewer days off due to sickness and they will not risk missing out on their education or exams.



# Frequently asked questions

## What does the law require?

### Of parents:

It is the duty of the parent of every child aged five to 16 to ensure the child receives efficient, full-time education, suitable to his or her age, ability or aptitude (and to any special need), either by regular attendance at school or otherwise.

### Of local authorities:

It is the duty of every local authority to ensure sufficient primary and secondary schools of appropriate character and with necessary equipment are available to provide all pupils in the area with education suitable to their different ages, abilities and aptitudes.

## Will a school know where I listed it in my application?

All applications are treated equally against each school's published admission criteria. Schools are not provided with the preference order as it has no relevance to the decision-making process.

## Does the law guarantee my child a place in the school of my choice?

You might not be offered one of your preferences, but to increase your chances of being offered one of your preferred schools, you must research the admission criteria for the schools you are interested in. You should include one school in your list where you are reasonably certain your child meets the criteria.

For example, this could be if there is a sibling already at the school and this is a priority indicated in the school's criteria. Also, if your nearest school offers the majority of places based on distance, then you are encouraged to add to your list of preferences. The law allows parents to appeal to an independent panel if their child is refused a place at a school of their preference. Please refer to the section on appeals on page 21 for further information.

## Do I have priority for a school place in the borough I live in?

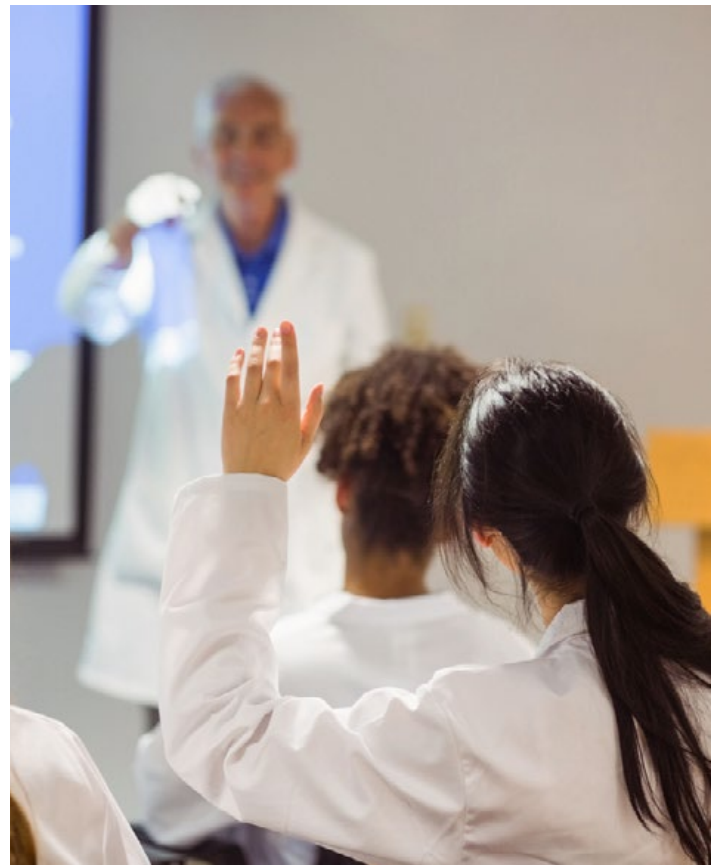
It is against the law for local authorities to give priority to their own residents.

## Can I change or withdraw my preferences after I have submitted my application?

Once you have submitted your application, you can change the order of your preferences and the schools you have listed up until the closing date. Changes cannot be made to your application after the closing date except in exceptional circumstances.

## The distance you have calculated from my home to the school is further away than the distance I have calculated on a measuring system I used on the internet. What do I do?

The local authority's geographical measuring system is used for calculating distances from home to school. Distances measured by other means (e.g. private car, pedometer or on the internet) are likely to be calculated on a different basis and should not be relied upon as evidence the local authority's distance calculation is incorrect. The local authority's measuring system is designed to be precise, reliable and consistent, and is used for all applications.



## Frequently asked questions

### **The school I have applied for has random allocation to decide who is offered a place. How does this work?**

Some schools use random allocation instead of distance in order to determine a rank number order when there are more applications than places available. This may also be referred to as a lottery or ballot. Schools can decide how they apply this method but it must be supervised by someone independent of the school. This can be an individual or an external organisation.

When places become available, random allocation must be used each time to determine the next offer. This will mean that there is no ordered waiting list for schools that use random allocation. Each time random allocation is applied, a record is kept that will show the rank number given to the applicants.

### **If I decide I prefer a school I listed lower than the school I was offered, can I be considered for a place?**

Any preferences that are listed lower than the school offered are automatically withdrawn, so any lower preferences will no longer exist. Any requests after offers have been made for lower preferences will be treated as a new late application. If the school has a vacancy, then it will be possible to offer your child a place and withdraw the original offer made to you. If the school is full your child's name will be added to the waiting list.





# School information



# Overview

## How to use this section

This section contains basic information for each school and a summarised version of the oversubscription admission criteria.

You are advised to read the full admission arrangements for each school you are interested in applying to. These can be obtained directly from the respective school, their website and the local authority's website.

As many Kensington and Chelsea residents apply for schools located in several London boroughs, you will be able to obtain the equivalent information about schools you may be interested in applying to. Contact details for all London boroughs can be found on page 62.

For voluntary aided (church) schools it is important you read the notes that apply to the religious affiliation. These can be found in each schools full admission policy and arrangements.



# Overview

## Common definitions

To avoid repetition, the following common definitions will apply to each school and Academy in this section (unless indicated otherwise in the school's criteria).

### **Please note:**

**For all schools included in this brochure, children with an Education, Health and Care (EHC) plan that names the school will be allocated a place before any other allocations are made. Further information can be found on page 57.**

### **Looked After Children (also referred to as in 'Public Care')**

Children in care of the local authority and children who have been adopted or made subject to a child arrangement or a special guardianship order immediately following having been Looked After. Internationally adopted previously looked after children who have been in state care outside of England and ceased to be in state care as a result of being adopted. The child's social worker/adoption agency must submit a letter to the Admissions Team confirming the legal status of the child and the local authority to which the child is/was in care, and quoting the child's full name and current address.

### **Siblings (brothers and sisters)**

Children already attending the school who will continue to do so on the date of admission of the applicant. This includes half-brothers or half-sisters, adopted brothers or sisters, stepbrothers or stepsisters or the children of the partner of the parent or carer, provided they live at the same address as the applicant.

### **Distance from home to school**

Where distance from home to school is used to determine the order of priority, each school will set out in its admission arrangements how these are calculated.

For schools that do use distance, these are calculated using a straight line (as the crow flies) measurement from the child's home "address point" (determined by Ordnance Survey data). The child living closest to the school will receive the highest priority; accessibility by car or public transport will be disregarded.

If applicants share the same address point (for example, those who live in the same block of flats or shared house), priority will either be decided by those who live closest to the ground floor, then by ascending flat number order, or by random allocation. Each school will set out the method used.

If, in the unlikely event two or more applicants live exactly the same distance from the school, the offer of a place will be decided by random allocation, which will be carried out independently of the school.

### **Exceptional need**

**If this priority forms part of the school's admission criteria**, the governors may, on an individual basis, give priority to applicants who can demonstrate admission to the school is necessary on the grounds of professionally supported educational, medical and/or social need and that only this school can meet this need. Parents/carers must supply details of any such special factors at the time of the original application, together with recent supporting documentation. Such applications will not be considered without professional support – such as a letter or report from a doctor, consultant or social worker. Further guidance can be found on page 12.

### **Children from multiple births (e.g. twins, triplets)**

Each school must set out in its admission arrangements how it considers applicants from multiple births when the admission limit may be exceeded to admit all children. In most cases, places will be offered to all children. You are, however, advised to check the full policy for the school/schools you are applying for if this is a concern for you as different rules may apply.

# All Saints Catholic College

75 St Charles Square  
London W10 6EL

☎ 020 8969 7111  
✉ [info@allsaintscc.org.uk](mailto:info@allsaintscc.org.uk)  
🌐 [www.allsaintscc.org.uk](http://www.allsaintscc.org.uk)

**Headteacher/principal**

Mr Andrew O'Neill

**Nearest Tube station**

Ladbroke Grove (Hammersmith  
& City and Circle Lines)

**Bus routes**

7, 23, 52, 295, 316, 328, 452

**Type of school**

Voluntary aided, Catholic, mixed

**Ages**

11 to 16

**DfE number**

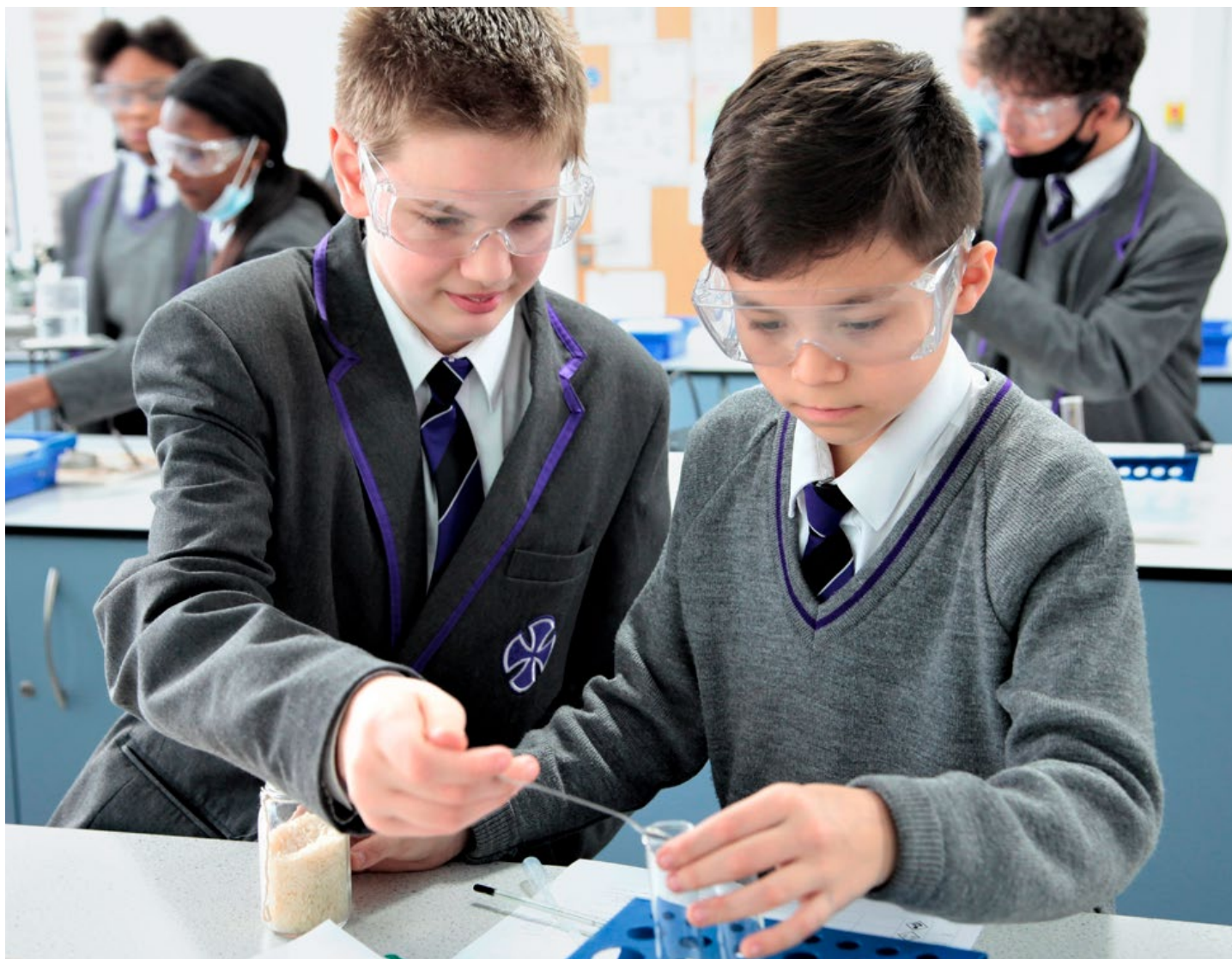
207 4801

**Number of pupils to be admitted  
in September 2024**

180

**Additional forms to complete**

Supplementary Information  
Form SIF) to be returned direct  
to school



# All Saints Catholic College

## About the school

All Saints Catholic College is an extremely successful and highly popular mixed secondary school in the heart of north Kensington. We pride ourselves on outstanding teaching and learning and a strong approach to discipline. Our results over the past few years have been extremely strong and have cemented our reputation as a high quality school.

We ensure that students feel valued within our Catholic community and forge strong relationships with a parent

body so that we can ensure success for all students. We have a wide ranging extra-curricular offer so that all students can develop new interests and skills that will help to prepare them for life beyond school – this has been hugely popular with our families.

Over the past few years All Saints Catholic College has become oversubscribed with applications due to this traditional approach that has yielded excellent exam results and a reputation of being a first class school.



For more detailed information about the school, please visit their website: [www.allsaintscc.org.uk](http://www.allsaintscc.org.uk)

Apply online: [www.rbkc.gov.uk/school-admissions](http://www.rbkc.gov.uk/school-admissions)

# All Saints Catholic College

## Admission criteria

The below criteria has been summarised and you will need to refer to the school's website for the full admission policy and arrangements: [www.allsaintscc.org.uk](http://www.allsaintscc.org.uk) 

You can also obtain further information by visiting the school on the dates set out below.

After the allocation of children with an EHC plan\*, the admission criteria will be applied in the following order of priority:

1. Catholic Looked After and previously Looked After Children\*.
2. Baptised Catholic children with a sibling\* at the school at the time of admission.
3. Baptised Catholic children.
4. Other Looked After and Previously Looked After Children\*.
5. Other children with a sibling at the school at the time of admission.
6. Catechumens and baptised children of Eastern/Orthodox Churches where the application is supported by either a certificate of baptism or a letter from the priest confirming membership of their faith community.
7. Children from where the application is supported by either a certificate of baptism or a letter from their minister of religion confirming membership of their faith community.
8. Children of other faiths where the application is supported by a letter from their minister of religion confirming membership of their faith community.
9. Any other children.

Should there be more applications than places available within any of the above categories, the governors will first allocate places to children on roll of the listed local feeder primary schools.

### Footnote

\*Common definitions can be found on page 27.

## Feeder schools

Ark Brunel, Avondale Park, Barlby, Bevington, Colville, Oratory, Our Lady of Dolours, Our Lady of Victories, Oxford Gardens, St Charles, St Francis of Assisi, St Joseph's, St Mary's Catholic, St Mary of the Angels, St Thomas CE and Thomas Jones School.

## Tie-break

Distance will be measured from the main entrance of the school to the applicant's home using the local authority's geographical measuring system. In the case of a number of addresses in a block with the same geographical reference, priority will be determined by random allocation.

## How places were offered in 2023 (on National Offer Day, 1 March 2023)

**Total applications:** 598

12 places allocated to pupils with a final Education, Health and Care Plan.

Criterion	Offers
Catholic LACs	2 offers
Baptised Catholic siblings	19 offers
Baptised Catholics	112 offers
Non-Catholic LACs	3 offers
Other Siblings	18 offers
Eastern/Orthodox Churches	8 offers
Other Christians	6 offers to those attending a feeder school up to a distance of 0.758 of a mile

## Appeals information

**2023:** Please contact the school

**2022:** 7 heard, 1 upheld

**2021:** 2 heard, none upheld

# All Saints Catholic College

## Visiting the school

### Open days and evenings

#### Open evening

Wednesday 13 September at 6pm to 8pm

#### Open mornings

Monday 18 September at 9am

Wednesday 20 September at 9am

Friday 22 September at 9am

#### Open afternoons

Tuesday 19 September at 1.30pm

Thursday 21 September at 1.30pm

# The Cardinal Vaughan Memorial School

89 Addison Road  
London W14 8BZ

☎ 020 7603 8478  
✉ [mail@cvms.co.uk](mailto:mail@cvms.co.uk)  
🌐 [www.cvms.co.uk](http://www.cvms.co.uk)

## Headteacher/principal

Paul Stubbings Esq.

## Nearest Tube stations

Holland Park (Central Line);  
Shepherd's Bush (Central Line  
and Overground)

## Bus routes

12, 49, 94, 220, 295

## Type of school

Academy, Catholic, boys  
(part of the Saint John Southworth  
Catholic Multi Academy Trust)

## Specialism

Maths, computing

## Ages

11 to 18

## DfE number

207 5402

## Number of pupils to be admitted in September 2024

128

## Additional forms to complete

Supplementary Information  
Form (SIF) to be returned direct  
to school. Deadline for school's  
supplementary information form  
to be returned direct to the school  
by Friday 20 October at 5pm.

Music aptitude application to  
be returned direct to school by  
Monday 25 September at 5pm





# The Cardinal Vaughan Memorial School

## About the school

Cardinal Vaughan Memorial School enjoys a position of national prominence in terms of the high performance of its pupils in public examinations: year after year the school tops national league tables, regularly outperforming many selective and fee-paying schools.

Its success is attributable to its unapologetically traditional outlook: we expect hard work from pupils and staff, and support from the parents. Regular homework in all subjects is set to support classwork. High standards of discipline are expected and enforced. This traditional approach, however, does not mean that the school looks backwards – on the contrary, pupils' learning

is supplemented by state-of-the-art technology. The Vaughan is, therefore, traditional in the best sense of the term: retaining the best of the old, it adopts the best of the new.

At the heart of the school's success, however, lies its Catholic ethos, which underpins all that it does. It is this ethos, to which all members of the school – staff, pupils and parents – subscribe, which binds us all together, creating a sense of unity. This unity of outlook leads to a clearly defined sense of purpose, which creates real momentum. The results of this are plain for all to see.



For more detailed information about the school, please visit their website: [www.cvms.co.uk](http://www.cvms.co.uk)

Apply online: [www.rbkc.gov.uk/school-admissions](http://www.rbkc.gov.uk/school-admissions)

# The Cardinal Vaughan Memorial School

## Admission criteria

The below criteria has been summarised and you will need to refer to the school's website for the full admission policy and arrangements: [www.cvms.co.uk/admissions](http://www.cvms.co.uk/admissions)

You can also obtain further information by visiting the school on the dates set out below.

After the allocation of children with an EHC plan\*, the admission criteria will be applied in the following order of priority:

There are 128 places in Year 7 split into three ability bands. There are 32 places in ability band 1 (above average ability), 64 in band 2 (average ability) and 32 in band 3 (below-average ability).

### Oversubscription criteria

- A. Catholic looked after and previously looked after boys, including boys adopted from state care outside England.
- B. Catholic boys with a Certificate of Catholic Practice in the following order of priority:
  1. Up to 12 boys eligible for a music aptitude place.
  2. Brothers of current or former pupils on the school roll.
  3. Boys whose parents/carers are members of staff at the school.
  4. Our Lady of Victories Catholic Primary School SW7 5AQ, St Augustine's Catholic Primary School W6 8QE, St John XXIII Catholic Primary School W12 7QT, St Joseph's Catholic Primary School SW3 2QT, St Joseph's Catholic Primary School W9 1DF, St Thomas of Canterbury Catholic Primary School SW6 7HB.
  5. Other boys.
- C. Other Catholic boys.
- D. Other looked after and previously looked after boys, including boys adopted from state care outside England.

E. Catechumens or members of an Eastern Christian Church.

F. Any other boys.

If there are more boys in any group than places available, remaining places will be offered by random allocation.

## Sixth form

Website address for details on the sixth form: [www.cvms.co.uk/about-the-sixth-form](http://www.cvms.co.uk/about-the-sixth-form)

## How places were offered in 2023 (on National Offer Day, 1 March 2023)

**Total applications:** 716

5 places allocated to children with an EHC plan.

Criterion	Band 1 (31 places)	Band 2 (61 places)	Band 3 (31 places)
Catholic LACs (A)	0 offers	0 offers	1 offer
Music places (B1)	3 offers	6 offers	3 offers
Siblings & former siblings (B2)	6 offers	13 offers	7 offers
Children of Staff (B3)	0 offers	0 offers	0 offers
Catholic Boys at Feeder School (B4)	3 offers	4 offers	4 offers
Catholic Boys (B5 – randomised)	19 offers	38 offers	16 offers

## Appeals information

**2023:** 14 heard, 1 upheld

**2022:** 17 heard, 2 upheld

**2021:** 30 heard, 2 upheld

**2020:** 30 heard, 3 upheld

**2019:** 56 heard, 3 upheld

**2018:** 48 heard, 5 upheld

### Footnote

\*Common definitions can be found on page 27.

# The Cardinal Vaughan Memorial School

## Visiting the school

Information will be made available on the school website from September: [www.cvms.co.uk/admissions](http://www.cvms.co.uk/admissions) 

### Open evenings and test dates

#### Open evenings

Thursday 14 September at 4.30pm and 6pm

Tuesday 19 September at 4.30pm and 6pm

(last tour at 6.15pm)

#### Ability banding test (all applicants)

Monday 30 October

#### Deadline for applying for music aptitude place

Monday 25 September at 5pm

#### Music aptitude test

During the week commencing Monday 2 October

(this is for music aptitude applicants only)

#### Music aptitude results to parents

Before 31 October

# Chelsea Academy

Lots Road  
London SW10 0AB

☎ 020 7376 3019  
✉ [admin@chelsea-academy.org](mailto:admin@chelsea-academy.org)  
🌐 [www.chelsea-academy.org](http://www.chelsea-academy.org)

## Headteacher/principal

Mariella Ardron

## Nearest Tube stations

Fulham Broadway (District Line);  
Imperial Wharf (Overground)

## Bus routes

C3, 391, 11, 22

## Type of school

Academy, Church of England,  
co-educational

## Specialism

Science

## Ages

11 to 18

## DfE number

207 6905

## Number of pupils to be admitted in September 2024

180

## Additional forms to complete

Supplementary Information  
Form (SIF) to be returned direct  
to school



# Chelsea Academy

## About the school

Chelsea Academy is a mixed Church of England Academy near Chelsea Harbour, which opened in 2009 in an award winning new building. Our vision is for a school that serves its local community and has a distinctive Christian ethos.

We are proud of our high academic standards but also that, through our Christian values, we develop the whole child into someone who will be successful in the real world. We are a happy and inclusive community and visitors always comment on the purposeful and welcoming atmosphere of the Academy.

Through our historic science specialism we offer a unique range of STEM opportunities from year 7 through to year 13, including an innovative Robotics programme, and visits to CERN in Switzerland and to National Maths

Challenge competitions. However we value the Arts and Humanities just as much, so that students flourish in all academic disciplines at the Academy.

Judged as outstanding by both Ofsted (2012) and SIAMS (2017), we hold the prestigious NACE Challenge award for high quality provision for more able students. We are particularly proud that since 2019 12 of our year 13 students have gone on to study at Oxford and Cambridge, with many more progressing to other super-selective universities.


For any young person who is passionate about learning and determined to achieve within the context of a Christian community, Chelsea Academy represents an unrivalled opportunity.



For more detailed information about the school, please visit their website: [www.chelsea-academy.org](http://www.chelsea-academy.org)

# Chelsea Academy

## Admission criteria

The below criteria has been summarised and you will need to refer to the school's website for the full admission policy and arrangements: [www.chelsea-academy.org/admissions](http://www.chelsea-academy.org/admissions) 

You can also obtain further information by visiting the school on the dates set out below.

After the allocation of children with an EHC plan\*, the admission criteria will be applied in the following order of priority:

- A. Looked After and previously Looked After Children\*.
- B. Exceptional need\*. If you would like your child to be considered under this criterion you must submit clear reasons why it is necessary for your child to attend Chelsea Academy rather than any other school. Your reasons should be exceptional, and **must** be supported by evidence from a professional, such as a doctor or social worker. The professional support provided must clearly make the case that your child's needs can best be met at Chelsea Academy rather than another local school.
- C. Children of staff where the member of staff has been employed by the Academy (i.e. those who have an employment contract with the Academy) for two or more years at the time of application or where the member of staff is recruited to fill a vacant post for which there is a demonstrable skill shortage.
- D. Siblings\* of students on roll at Chelsea Academy on 31 October 2023.


Admission under the categories above will be considered irrespective of any religious affiliation.

## Balance of foundation and community places

Of the remaining places per year, 50 per cent will be foundation (church) places and 50 per cent community (open) places. If either or both of these categories are oversubscribed then places will be allocated in the following order of priority:

### Foundation places

Foundation places are open to applicants who meet the criteria for foundation places. To ensure their application can be considered in full, applicants should complete Chelsea Academy's foundation Supplementary Information Form. Applicants who meet the criteria for foundation places will be allocated places in the following order of priority:

1. Children who regularly attend a Christian church or chapel **and** on the closing date for applications are attending a Church of England primary school in the Royal Borough of Kensington and Chelsea (a foundation feeder school)
2. Children who regularly attend a Christian church or chapel within the deaneries of Kensington, Chelsea, Hammersmith and Fulham or Westminster. Deanery maps are available on the Academy **website** 
3. Children who on the closing date for applications are attending a Church of England primary school in the Royal Borough of Kensington and Chelsea (a Foundation feeder school).

If there are more applications than places available in any category, priority will be given to children who live nearest the Academy as measured in a straight-line from the child's home address to the centre of the Academy building.

### Footnote

\*Common definitions can be found on page 27.

# Chelsea Academy

## Community places

Community places are open to all applicants. If there are more applications than places available places will be offered in the following order of priority:

1. To children who on the closing date for applications attend a community feeder school:
2. To children who do not attend a community feeder school.

If there are more applicants than places available in either category, priority will be given to children who live nearest the Academy as measured in a straight-line from the child's home address to the centre of the Academy building.

If two children have the same distance a tie-break decision will be made using random allocation. If a tie-break involves twins or triplets, Chelsea Academy will offer places over the published number to accommodate the children.

## List of foundation feeder schools

Name	Address
Christ Church C of E Primary School	1 Robinson Street, London SW3 4AA
Holy Trinity C of E Primary School	Sedding Street, London SW1X 9DE
St Barnabas and St Philip's C of E Primary School	58 Earl's Court Road, London W8 6EJ
St Clement and St James C of E Primary School	Penzance Place, London W11 4PG
St Cuthbert with St Matthias C of E Primary School	Warwick Road, London SW5 9HE
St Mary Abbots C of E Primary School	2 Kensington Church Court, London W8 4SP
St Thomas' C of E Primary School	Appleford Road, London W10 5EF

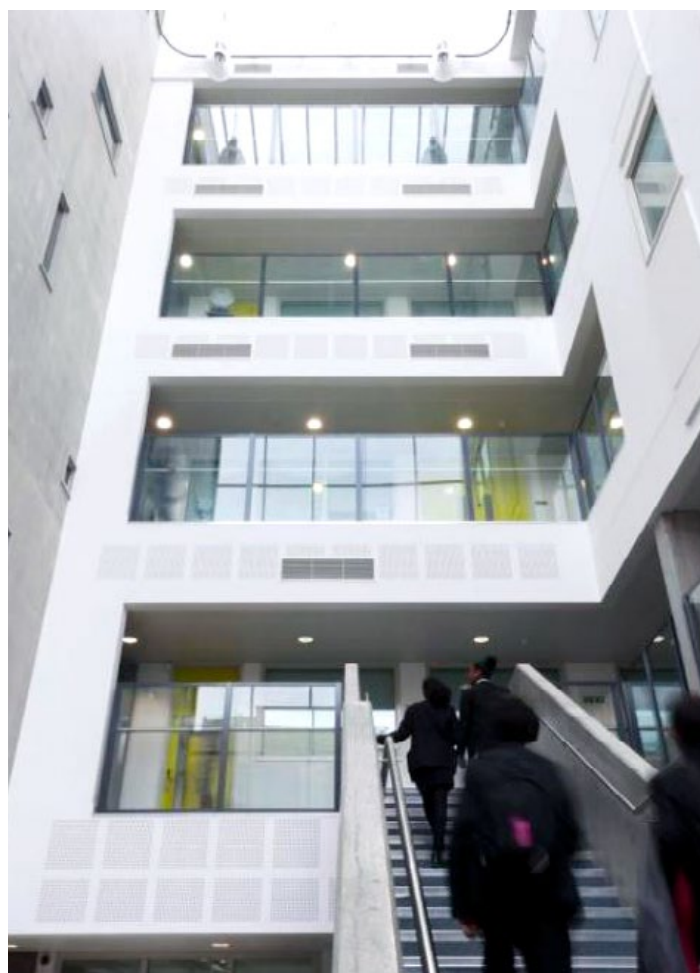
## List of community feeder schools

Name	Address
Ashburnham Community Primary School	17 Blantyre Street, London SW10 0DT
Bousfield Primary School	South Bolton Gardens, London SW5 0DJ
Marlborough Primary School	Draycott Avenue, London SW3 3AP
Park Walk Primary School	Park Walk, London SW10 0AY

## Sixth form

Please visit our website for details on how to apply for a sixth form place:

[www.chelsea-academy.org/sixth-form](http://www.chelsea-academy.org/sixth-form) 



# Chelsea Academy

## How places were offered in 2023 (on National Offer Day, 1 March 2023)

**Total applications:** 741

5 places allocated to children with an EHC plan.

Criterion	Offers
LAC/Social medical	4 offers
Children of Staff	1 offer
Sibling places	49 offers

Remaining places offered as follows:

Criterion	Offers
Foundation places	41 offers (all qualifying Foundation applicants offered)
Community places	80 offers (up to 0.880 mile straight-line distance – feeder school applicants only)

## Appeals information

**2023:** 2 heard, none upheld

**2022:** 3 heard, none upheld

**2021:** No appeals heard

**2020:** 4 heard, none upheld

**2019:** 3 heard, none upheld

**2018:** 6 heard, none upheld


## Visiting the school

### Open days and evenings

#### Open evening

Thursday 21 September at 5pm to 8pm

#### Academy tours for parents/carers only

Tours of the Academy for parents/carers will be available by appointment each morning at 9.10am from Monday 25 September to Friday 6 October. Please book via the Academy [website](#) 



# Holland Park School

**Airlie Gardens**  
London W8 7AF

☎ 020 7908 1000  
✉ [info@hollandparkschool.co.uk](mailto:info@hollandparkschool.co.uk)  
🌐 [www.hollandparkschool.co.uk](http://www.hollandparkschool.co.uk)

## Headteacher/principal

Steve Parsons

## Nearest Tube stations

Notting Hill Gate (Circle, District and Central Lines); High Street Kensington (Circle and District Lines)

## Bus routes

27, 28, 31, 52, 70, 94, 328 and 452 to Notting Hill

## Type of school

Academy, mixed comprehensive

## Specialism

English

## Ages

11 to 18

## DfE number

207 4001

## Number of pupils to be admitted in September 2024

240

## Additional forms to complete

Students wishing to apply under the Art Aptitude scheme must complete the Art Aptitude application form on the school's website by Monday 25 September 2023.

Students who are not taking part in the Art Aptitude test are not required to complete any additional application forms to the school



# Holland Park School

## About the school

Holland Park School is a successful, oversubscribed comprehensive secondary school in the heart of West London. The school is proud of its diversity – diversity in all respects. We endeavour at all times to ensure that school creates an open, well-balanced environment, a warm atmosphere in which people can feel appropriately challenged by high expectations and able to fulfill their widest human potential by feeling safe and contented. Our ambition is that people can capitalise on their individual potential: achievement is a relative term and success is found in a myriad of ways. We wish people to thrive as individuals whilst contributing to communal aspirations: a balance of the person and the institution.

A broad and balanced curriculum is balanced with a deep commitment to diverse extracurricular opportunities that, alongside the school's pastoral support, seeks to nourish the development of each individual. Career planning for staff and students is personalised, building on each person's strengths, aspirations and needs.

Very little at Holland Park happens by chance: this is a planned, well-articulated institution which relishes its responsibility for driving forward progress and is passionate about equality of opportunity and social justice.




For more detailed information about the school, please visit their website: [www.hollandparkschool.co.uk](http://www.hollandparkschool.co.uk)

Apply online: [www.rbkc.gov.uk/school-admissions](http://www.rbkc.gov.uk/school-admissions)

# Holland Park School

## Admission criteria

The below criteria has been summarised and you will need to refer to the school's website for the full admission policy and arrangements:

[www.hollandparkschool.co.uk/admissions/admissions-to-year-7](http://www.hollandparkschool.co.uk/admissions/admissions-to-year-7) 

You can also obtain further information by visiting the school on the dates set out below.

## Banding

All applicants must attend the school to take the banding test on Saturday 18 November 2023 in the morning. Failure to attend will mean your child will not be allocated to an ability band. As the school is always heavily oversubscribed, those not allocated to a band will not be offered a place, even if they have a sibling at the school or live very close to the school.

Holland Park School will write to you with arrangements for the test and the time your child needs to arrive at the school. If you do not receive communication from the school by Thursday 16 November 2023, you are advised to either contact the school on 020 7908 1000 or the Kensington and Chelsea Admissions Team on 020 7745 6432.

The school will have a list of all those who have named Holland Park School as a preference in their application. Even if you do not receive your letter, your child's name will be on the school's application list and they must turn up for the test. If there are exceptional reasons why your child cannot attend, you will need to contact the school for advice before the test date.

The test is used to ensure the intake to the school represents the ability range of the cohort applying so that the school remains truly comprehensive.

## The order of priority

After the allocation of children with an EHC plan\*, the admission criteria will be applied in the following order of priority:

A. Looked After and previously Looked After Children\*.

- B. A maximum of 24 places will be offered to applicants who can demonstrate an aptitude and capacity to succeed in the visual arts, especially art and design. Places offered under this criterion are made without reference to a child's score on the ability banding test and instead will be assessed by a separate aptitude test. Applicants for these places must complete a supplementary form. There will be an assessment by the school of applicants' potential. Priority will then be applied in descending order by aptitude test score to applicants with more than 20 points (from a possible 40). Applicants who are not offered a place on the grounds of aptitude will automatically be considered for a place within their ability band under the general admission criteria described below. The governors reserve the right to admit fewer than 24 children under this criterion if there are insufficient applicants reaching the required score, with any remaining places split equally across the four ability bands.
- C. Children of staff in either or both of the following circumstances:
- where the member of staff has been employed by the school for two or more years at the time at which the application for admission to the school is made, and/or;
  - the member of staff is recruited to fill a vacant post for which there is a demonstrable skill shortage.



## Footnote

\*Common definitions can be found on page 27.

# Holland Park School

The remaining places in each of the four bands will be offered in the following order of priority:

- D. Siblings\*. This applies when a sibling will be on roll when the new applicant starts school up to an including Year 11 only. Sibling connection does not apply to older siblings that will be attending the sixth form.
- E. Distance. Nearness to the school will be calculated using a straight line (as the crow flies) measurement from the child's home 'address point' determined by Ordnance Survey Data to the main entrance gate used by the school, and as determined by the Council using its computerised measuring system. The child living closest to the school will receive the highest priority. Accessibility by car or public transport will be disregarded. If applicants share the same address (for example, live in the same block of flats or shared house) priority will be determined by random allocation.

If in the unlikely event two or more applicants live exactly the same distance from the school, the offer of a place will be decided by random allocation.

### Tie-break


If, in any of the bands, there are more applicants than places available in a category, places will be offered to children living nearest the school as described in category E.

### Twins and triplets

If a tie-break involves twins or triplets in the same band, Holland Park School will offer places over its published admission number to accommodate the children.

### Sixth form

Website address for details on the sixth form:

[www.hollandparkschool.co.uk/admissions/sixth-form-admissions](http://www.hollandparkschool.co.uk/admissions/sixth-form-admissions) 

### Footnote

\*Common definitions can be found on page 27.

## How places were offered in 2023 (on National Offer Day, 1 March 2023)

**Total applications:** 942

14 places allocated to children with an EHC plan.

Criterion	Offers
Visual art aptitude	10% of the available places were offered to children who met the visual art aptitude category 24 offers were made to those children who scored 24 out of 40 or higher and by distance as the tie breaker for equal scores
Band A	25% – 54 offers: 0 LAC, 11 siblings, the remaining offered up to 1.091 miles straight-line under distance criterion
Band B	25% – 54 offers: 1 LAC, 17 siblings, the remaining offered up to 0.972 miles straight-line under distance criterion
Band C	25% – 54 offers: 0 LAC, 9 siblings, the remaining offered up to 1.384 miles straight-line under distance criterion
Band D	25% – 40 offers: 0 LAC, 13 siblings, the remaining offered up to 0.807 miles straight-line under distance criterion

## Appeals information

**2023:** Please contact the school

**2022:** 9 heard, 2 upheld

**2021:** 14 heard, 1 upheld

**2020:** 24 heard, none upheld

**2019:** 30 heard, 1 upheld

**2018:** 28 heard, 1 upheld

# Holland Park School

## Visiting the school

### Open days, open evenings and test dates

#### Open evenings

Wednesday 20 September at 5pm to 8pm

#### Open mornings

Thursday 21 September at 9am to 10.45am

Friday 22 September at 9am to 10.45am

#### Deadline for art aptitude applications

Monday 25 September by 8am

#### Art aptitude testing

Saturday 7 October.

Full details obtained from the school website

#### Art aptitude results to parents

You will be notified before the closing date (31 October) if your child's score meets the required threshold

#### Banding test

Saturday 18 November.

Please note that applicants will receive written confirmation of the date and time. If you have listed a preference for Holland Park School but do not receive a letter, you will need to make sure your child still attends in the morning. If your child fails to attend the test it will affect their chances of being offered a place in the school. Full details obtained from the school website.

# Kensington Aldridge Academy

1 Silchester Road  
London W10 6EX

☎ 020 7313 5800  
✉ info@kaa.org.uk  
🌐 kaa.org.uk

**Headteacher/principal**

David Benson

**Nearest Tube station**

Latimer Road (Hammersmith & City and Circle Lines); Ladbroke Grove (Hammersmith & City and Circle Lines)

**Bus routes**

7, 23, 52, 70, 228, 295, 316, 452

**Type of school**

Academy, mixed

**Specialism**

Performing and creative arts

**Ages**

11 to 19

**DfE number**

207 4000

**Number of pupils to be admitted in September 2024**

180



# Kensington Aldridge Academy

## About the school

KAA opened in September 2014 and has grown to become a well-established and high-performing academy. Our 2017 Ofsted report grades us as “outstanding” in all areas and describes standards as “exceptional”. In 2018, KAA was named TES Secondary School of the Year – a prestigious award reserved for the best schools nationally. GCSE and A Level results are strong, and half of all Year 13 students progress to Russell Group universities each year, with a small number to Oxbridge.

We operate a rich, varied curriculum at KS3 that balances core academic subjects with a range of practical and creative disciplines. Unlike other schools, we do not shorten KS3 or enter students early for GCSEs. Our unique partnerships with independent schools Godolphin &

Latymer and Charterhouse, and arts bodies LAMDA and the Royal Academy of Dance, bring a range of benefits (more details on our website). Students who are passionate about performing and creative arts can consider applying via our aptitude test, which parents can enter alongside the standard admissions route.

Strong results and an ambitious curriculum don't tell the whole story. KAA is also a caring, inclusive school which focuses on developing a love of learning in all our students. We proudly celebrate the diversity of our community and aim to achieve top results without undue pressure. We want students to be happy, healthy and kind, as well as academically successful, and this ambition informs everything we do.




For more detailed information about the school, please visit their website: [kaa.org.uk](http://kaa.org.uk)

Apply online: [www.rbkc.gov.uk/school-admissions](http://www.rbkc.gov.uk/school-admissions)

# Kensington Aldridge Academy

## Admission criteria

The below criteria has been summarised and you will need to refer to the school's website for the full admission policy and arrangements: [kaa.org.uk/admissions](http://kaa.org.uk/admissions) 

You can also obtain further information by visiting the school on the dates set out below.

After the allocation of children with an EHC plan\*, the admission criteria will be applied in the following order of priority:

- A. Looked After and previously Looked After Children\*.
- B. Up to eighteen children who successfully pass the PCA aptitude test, at least nine of whom will be students that qualify for the 'pupil premium'. Please see reference note for this criterion. **See note below.**
- C. Children who live in the defined priority area (see map on next page) who have a sibling\* at the academy at the time of admission.
- D. Children who live outside the defined priority area who have a sibling\* at the academy at the time of admission.
- E. Children who live within the defined priority area who live nearest to the academy. Distances\* will be calculated using a straight measurement from the home address to the centre point of the academy.
- F. Children who live outside the defined priority area who live nearest to the academy. Distances\* will be calculated using a straight measurement from the home address to the centre point of the academy.

### Criterion note B

Kensington Aldridge Academy also admits up to 18 students (10 per cent) of the annual Year 7 intake to students who are able to demonstrate an aptitude in Performing and Creative Arts (PCA) through an aptitude test. Applicants for these places will need to complete a supplementary form, available from the academy.

The first nine offers will be to students who qualify for the 'pupil premium'. This is a safeguard to ensure the socio-economic background of students coming via the aptitude route will reflect that of the wider school.

### Footnote

\*Common definitions can be found on page 27.

For families that apply through this route, proof of 'pupil premium' status will be required upon application.

Eligibility will be determined if families are in receipt of, or have previously been in receipt of (within the last six years), any of the following:

- Income Support
- Income-based Job Seekers Allowance
- Income-related Employment and Support Allowance
- Support under Part VI of the Immigration and Asylum Act 1999
- The guaranteed element of State Pension Credit
- Child Tax Credit (provided you're not also entitled to Working Tax Credit and have an annual gross income of no more than £16,190)
- Working Tax Credit run-on – paid for four weeks after you stop qualifying for Working Tax Credit
- Universal Credit

The second nine offers can be for pupil premium or non-pupil premium students – they will be offered on the basis of the score in the aptitude test. Further details can be found on the school's website.

### Tie-break

In the unlikely event that two or more applicants live at exactly the same distance from the school the offer of a place will be decided by random allocation. If a tie-break involves twins or triplets, the academy will offer places over the published number to accommodate the children.

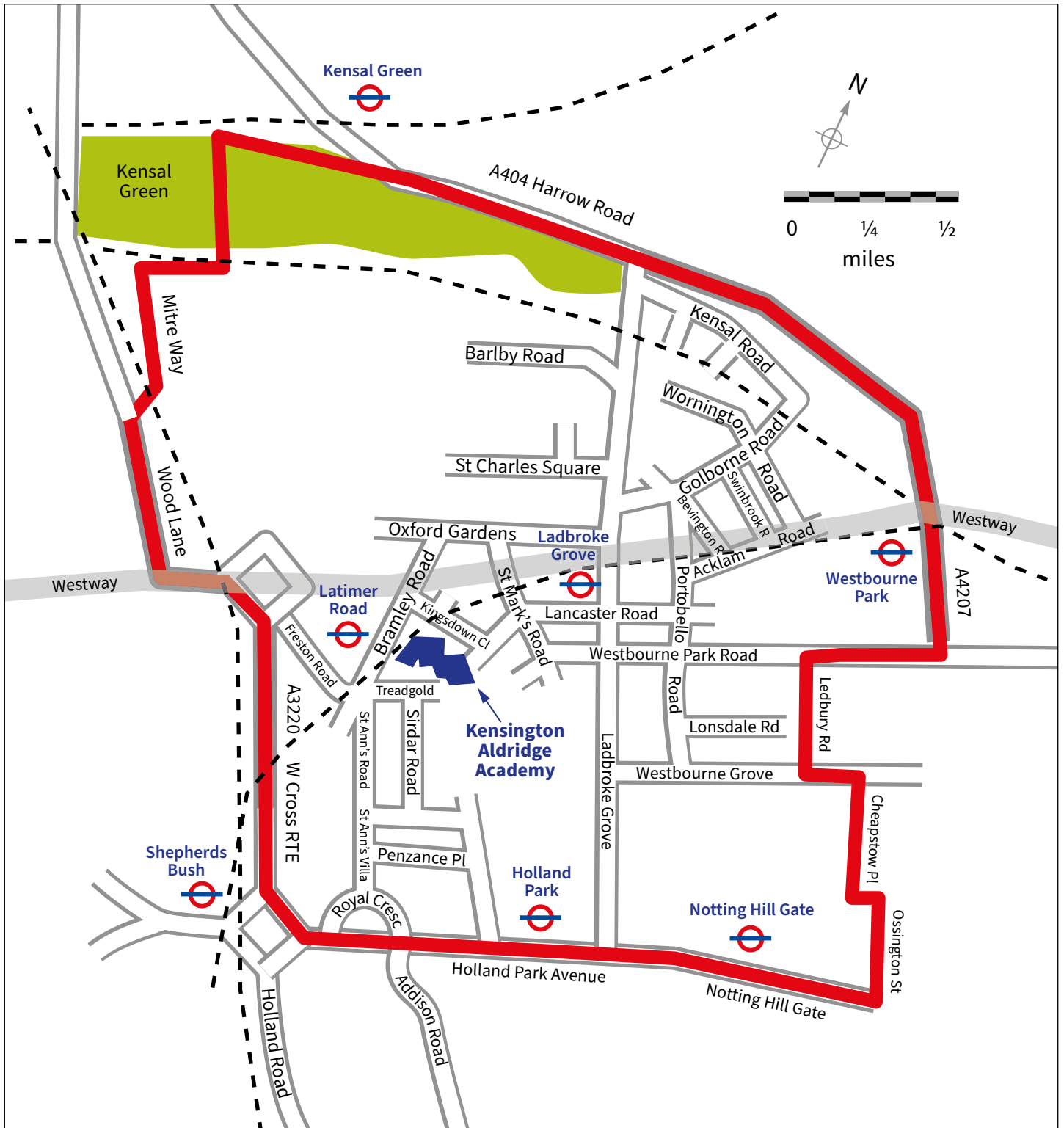




# Kensington Aldridge Academy

## Kensington Aldridge Academy priority area map

- The thick red line denotes the boundary of the admissions priority area.
- The site of Kensington Aldridge Academy is shown in dark blue towards the centre of the map.



# Kensington Aldridge Academy

## Sixth form

Website address for details on the sixth form:

[kaa.org.uk/sixth-form](http://kaa.org.uk/sixth-form) 

## How places were offered in 2023 (on National Offer Day, 1 March 2023)

**Total applications:** 696

10 places allocated to children with an EHC plan.

Criterion	Offers
Looked After Children	1 offer
Performing and Creative Arts (PCA) aptitude	17 offers (all PCA applicants with the minimum score of 40 out of 60 were offered)
Siblings	68 offers
Children living within the priority area	84 offers (up to 0.716 miles straight-line distance within priority area)
Children living outside the priority area	0 offers

## Appeals information

**2023:** 10 heard, none upheld

**2022:** 5 heard, none upheld

**2021:** No appeals heard

**2020:** 7 heard, none upheld

**2019:** 4 heard, none upheld

**2018:** No appeals heard

## Visiting the school

### Open days, open evenings and test dates

#### Open mornings

Wednesday 27 September, Friday 29 September, Monday 2 October and Tuesday 3 October at 9.15am (tour of school only). Please visit the school's website in advance to register for open morning events at [kaa.org.uk/admissions](http://kaa.org.uk/admissions) 

#### Open evening

Thursday 28 September at 5pm to 7.30pm

#### Deadline for Performing and Creative Arts (PCA) aptitude test applications

Tuesday 3 October at 5pm

#### PCA aptitude test

Saturday 14 October (one hour slot confirmed with parents after deadline closes). Results of PCA test will be received by Saturday 22 October

#### Sixth form open evening

Thursday 12 October at 5pm to 7.30pm

# St Thomas More Language College

42 Cadogan Street  
London SW3 2QS

☎ 020 7589 9734  
✉ [info@stm.rbkc.sch.uk](mailto:info@stm.rbkc.sch.uk)  
🌐 [www.stmlc.co.uk](http://www.stmlc.co.uk)

## Headteacher/principal

Dr T Papworth PhD, MBA, NPQH, MA

## Nearest Tube stations

Sloane Square (District and Circle Lines); South Kensington (District and Circle Lines)

## Bus routes

11, 19, 22, 137, 211, 265, 319, 360, C1, C10

## Type of school

Voluntary aided, Catholic, mixed

## Specialism

Languages

## Ages

11 to 16

## DfE number

207 4681

## Number of pupils to be admitted in September 2024

120

## Additional forms to complete

Supplementary Information Form (SIF) to be returned direct to school

## About the school

St Thomas More Language College (STMLC) is described by its students as a family. This is attributed to the fact that our students feel safe within a very strong community, which has developed as a result of our Catholic ethos. This means that the formation of faith and of the whole person is at the heart of all that we do. Every child is seen as having been created in the image and likeness of God, who has been given a unique purpose in life by God. We are here to help them discern that purpose by asking the question ‘what does God intend you to be’?

We are an inclusive, oversubscribed, mixed, multi-ethnic Catholic comprehensive school located in the heart of Chelsea. Our academic and pastoral focus results in us being academically successful, as we strive to meet the needs of our students through a creative curriculum which allows our students to flourish, with many achieving GCSE grades higher than their prior attainment would suggest.

The curriculum is also designed to encourage a love of learning and enable students to learn how to learn, thus giving them the skills and aspiration to become independent lifelong learners. We keep parents/carers fully engaged at all stages of student development and our non-teaching Pastoral and Academic Leaders add to our strength in this area.

STMLC has traditional high expectations in terms of conduct and uniform, and a clear focus on developing learning and relationships to help our students feel safe and become happy and successful in all that they do here. As well as academic achievement, we can also boast at being successful at putting our Faith into Action and delivering extracurricular activities such as the Duke of Edinburgh, team sport events, and performing arts. STMLC is recognised by Ofsted and the Diocese as being ‘Outstanding’ in all areas.

For more detailed information about the school, please visit their website: [www.stmlc.co.uk](http://www.stmlc.co.uk)

# St Thomas More Language College

## Admission criteria

The below criteria has been summarised and you will need to refer to the school's website for the full admission policy and arrangements: [www.stmlc.co.uk](http://www.stmlc.co.uk) 

You can also obtain further information by visiting the school on the dates set out below.

After the allocation of children with an EHC plan\*, the admission criteria will be applied in the following order of priority:

The Governors intend to admit the school's published admission number of 120 pupils in Year 7 each school year and, in doing so, will endeavour to preserve its comprehensive character by establishing a balanced intake across the ability range in the ratio 25 per cent, 50 per cent, 25 per cent. This will be achieved by the use of standardised verbal and non-verbal tests.

### Oversubscription criteria

1. Catholic Looked After and previously Looked After Children\*.
2. Catholic children with a Certificate of Catholic Practice from their parish priest of the parish or ethnic chaplain of the community in which the family attend Sunday Mass and a Baptismal Certificate.
3. Any other baptised Catholic applicants.
4. Other Looked After and previously Looked After Children\*.
5. Catechumens and members of an Orthodox Communion.
6. Children of other Christian denominations whose practice of their faith, and that of their parents/guardians, is supported by a written reference from their priest or minister in the community in which they regularly worship.
7. Any other applicants.

Should there be an oversubscription of children within a category, the governors will first allocate places in the following order of priority:

- Exceptional need\*.
- Sibling\*.
- Children attending our neighbouring school, St Joseph's Catholic Primary.
- Children whose parent is employed by St Thomas More Language College for two or more years at the time of application.
- Then to those pupils living nearest the school as measured by an electronic routing method administered by Hopewiser Limited, which measures distance "as the crow flies" from each individual property to the main entrance of the school. Should the distance be exactly the same, applicants will be placed in order by means of a lottery, which will take place in front of an independent witness – all applicants with matching distances are randomly selected via a tombola method and numbered in order of selection, the first applicant to be selected will precede the other applicant/applicants with the same distance. A child is deemed to be resident at a particular address when he/she resides there for 50 per cent or more of the school week.

### Applications from twins or multiple births

If the offer of places result in the admission of one pupil of a multiple birth/twin and not other, the governors reserve the right to offer places to all pupils of the same multiple birth/twin.

#### Footnote

\*Common definitions can be found on page 27.

# St Thomas More Language College

## How places were offered in 2023 (on National Offer Day, 1 March 2023)

**Total applications:** 437

No places allocated to children with an EHC plan.

All applicants who applied were offered a place.

## Appeals information

**2023:** No appeals lodged

**2022:** No appeals lodged

**2021:** 2 heard, none upheld

**2020:** 2 heard, neither upheld

**2019:** 9 heard, 9 upheld

**2018:** 9 heard, 1 upheld

## Visiting the school

### Open days, open evenings and test dates

#### Open days and evenings

Thursday 14 September at 4.15pm

Wednesday 20 September at 4.15pm

#### Banding test dates

Thursday 23 November (applicants will be contacted with an individual appointment date and time)

# Additional information



# Support services

## In-year admissions

📄 [www.rbkc.gov.uk/school-admissions](http://www.rbkc.gov.uk/school-admissions)

☎ 020 7745 6432

An in-year admission is when an application for a school place needs to be made outside the normal admission round (the first year of entry to a school). In most cases your reason for making an application will be that you have moved to a new address, moved from abroad or you would like to transfer your child from one school to another. There is a separate process for applying in-year for a school place.

## Fair access protocol

📄 [www.rbkc.gov.uk/school-admissions](http://www.rbkc.gov.uk/school-admissions)

☎ 020 7745 6432

Every school is committed to taking its share of vulnerable children who are hard to place in accordance with locally agreed protocols. Accordingly, outside the normal round of admissions, the school governing bodies are empowered to give absolute priority to a child whose admission is requested under the Council's fair access protocol, which carries the agreement of both the governing body and local authority for the current admission year. School governing bodies have this power even for cases when admitting such a child would cause the school to exceed its published admissions number.



# Support services

## Educational Psychology Service

☎ 020 7361 3311

Every school has a link to an educational psychologist (EP) – a specialist in how children, young people and young adults develop and learn.

Schools have a limited amount of free access to educational psychologists to support them and manage Special Educational Needs processes and systems. In addition schools can buy in school visits from their link educational psychologists. Help may be asked for when pupils show difficulties with their social-emotional development (including wellbeing/mental health), behaviour, learning or progress generally in school.

Educational psychologists can only directly work with a named pupil if parents/carers give informed consent. Parents/carers themselves may ask for their help through the school. Educational psychologists can also provide general consultative support and guidance for groups or school wide issues as well as research and training.

## Support for school attendance

☎ 020 7598 4608

☎ 020 7598 4601

After you have been allocated a school place, making sure your child attends school regularly and on time every day is really important, not only to make sure they have the best possible chance to get the most out of their education but also because children who are not in school are more likely to get into trouble outside school or be vulnerable.

Parents have a legal responsibility to get their children to school, but if you are having difficulties with this, it is important you talk to school staff, who are there to help you.

You or school staff may feel you need some extra help. Each borough has professional staff who work with families with children who are not attending school. They are based in the Early Help Team if you live in Kensington and Chelsea. This multi-disciplinary team will work with schools, children and parents to improve children's school attendance and reduce unnecessary absence and truancy.

## Children with Disabilities Team

☎ 020 7598 4921

This team offers information, advice, support and practical help to families with children who have a permanent and substantial disability or long-term illness that affects their everyday living.

The team offers advice on how to access services available for children and young people who have disabilities. The initial way to contact the team is through the duty social worker who is available on 020 7598 4921.

## Home-to-school travel

☎ 020 7361 3311

✉ [travelassistance@rbkc.gov.uk](mailto:travelassistance@rbkc.gov.uk)

The majority of children attending secondary school will either walk or cycle to school. You can visit the Council's **School Travel Initiative** [↗](#) for more information.

When applying for schools you will need to consider how your child will travel to and from school if you select schools that are a considerable distance from your home (over three miles). If the free travel concession are removed, it is unlikely that financial support will be provided if you did not apply for schools closer to your home address. For further information, please visit the Transport for London (TfL) website at [www.tfl.gov.uk](http://www.tfl.gov.uk) [↗](#)

There may be circumstances where travel assistance is required outside the scope of arrangements offered by TfL. In this instance, the Council will take account of the statutory requirements.

The full policy and application form are available from the **Travel Care and Support Service** [↗](#)



# Support services

## Special Educational Needs and Education, Health and Care needs assessments

📄 <https://bit.ly/3e0oldG>

☎ 020 7361 3311

Most children and young people with Special Educational Needs (SEN) and/or disabilities will have their needs met within local mainstream early years settings, schools or colleges. The local authority works with all settings to help them with identifying, assessing and making provision for pupils with SEN. All mainstream school and college settings have delegated funding so that they can meet the needs of pupils with SEN.

If you are applying to a new school and you think your child may have a special educational need, the first step is to talk with the headteacher and/or SENCO when you visit the school. They will be able to talk to you about the support they provide for children with learning needs and how they could meet your child's needs. They must also publish this information on their websites: this is usually called their SEN Information Report. The local authority expects all mainstream schools to support children with special educational needs, and to work with parents

to develop an SEN Support Plan: this will record what is happening to support your child, and the progress she/he is making as a result.

Some children and young people with SEN or disabilities may need support that cannot be provided from the resources of a mainstream school alone. Once all the resources and support in the school have been put into place and there has been time to see what the effect is, the school may then discuss the possibility of an Education, Health and Care Needs Assessment with you. This assessment is coordinated by the local authority and as well as education, it involves health and social care assessments. However, the school would discuss this in detail with you before requesting an assessment, and an assessment would only take place with your clear agreement.

If your child already has an EHC plan, the information relating to the application process set out in this brochure does not apply to you as the local authority needs to work with you to agree the best place for your child. To discuss these arrangements, please contact the Special Educational Needs Service on 020 7361 3311.



# Support services

## Free school meals

### Who is eligible for free school meals?

- Universal Credit with an annual net earned income of no more than £7,400
- Income Support
- Income-based Jobseeker's Allowance
- Income-related Employment and Support Allowance
- Support under Part 6 of the Immigration and Asylum Act 1999
- The guarantee element of Pension Credit
- Working Tax Credit run-on (paid for the four weeks after you stop qualifying for Working Tax Credit)
- Child Tax Credit (with no Working Tax Credit) with an annual income of no more than £16,190

In addition, the following pupils will be protected against losing their free school meals as follows:

Once Universal Credit is fully rolled out, any existing claimants that no longer meet the eligibility criteria at that point (because they are earning above the threshold or are no longer in receipt of Universal Credit) will continue to receive free school meals until the end of the current phase of education (i.e. primary or secondary).

Please remember that a pupil is only eligible to receive a free school meal when a claim has been made on their behalf, and their eligibility has been verified by the school or the local authority.

Please note that the Government could change the criteria for eligibility at any time.



# 14 to 19 education options

## Sixth form and post-16 education

Contact the sixth forms below directly to find out more about their courses, open events and enrolment procedures.

---

### Morley College London

Type of school: College, further education.

Chelsea Centre: Hortensia Road, London SW10 0QS

Kensington Centre: Wornington Road, London W10 5QQ

☎ Switchboard: 020 7450 1889 (9am to 5pm)

✉ [enquiries@morleycollege.ac.uk](mailto:enquiries@morleycollege.ac.uk)

🌐 [www.morleycollege.ac.uk](http://www.morleycollege.ac.uk)

---

### St Charles Catholic Sixth Form College

Type of school: Sixth form, mixed.

St Charles Square, London W10 6EY

☎ 020 8968 7755

✉ [enquiries@stcharles.ac.uk](mailto:enquiries@stcharles.ac.uk)

🌐 [www.stcharles.ac.uk](http://www.stcharles.ac.uk)



# Independent schools

## Independent fee-paying schools

A list of private or independent schools in Kensington and Chelsea is provided below. You will usually be required to pay fees to attend these schools but some may offer bursaries towards these fees. More detailed information is available from the Independent Schools' Council at [www.isc.co.uk](http://www.isc.co.uk) and the Independent Schools Directory and Resource at [www.independentschools.co.uk](http://www.independentschools.co.uk) or from the schools direct.

These schools do not form part of the Pan-London Admissions System and you must apply to them directly.

---

### Gems Hampshire School

15 Manresa Road, London SW3 6NB

☎ 020 7352 7077

✉ [info@thehampshireschoolchelsea.co.uk](mailto:info@thehampshireschoolchelsea.co.uk)

🌐 [www.thehampshireschoolchelsea.co.uk](http://www.thehampshireschoolchelsea.co.uk)

---

### Instituto Español Vicente Cañada Blanch

317 Portobello Road, London W10 5SZ

☎ 020 8969 2664

✉ [canada.blanch.uk@educacion.gob.es](mailto:canada.blanch.uk@educacion.gob.es)

🌐 <http://vicentecanadablanch.educalab.es/>

---

### Knightsbridge School

67 Pont Street, London SW1X 0BD

☎ 020 7590 9000

✉ [office@knightsbridgeschool.com](mailto:office@knightsbridgeschool.com)

🌐 [www.knightsbridgeschool.com](http://www.knightsbridgeschool.com)

### Lloyd Williamson School

12 Telford Road, London W10 5SH

☎ 020 8962 0345

✉ [admin@lws.org.uk](mailto:admin@lws.org.uk)

🌐 [www.lloydwilliamson.co.uk](http://www.lloydwilliamson.co.uk)

---

### More House School

22-24 Pont Street, London SW1X 0AA

☎ 020 7235 2855

✉ [office@morehousemail.org.uk](mailto:office@morehousemail.org.uk)

🌐 [www.morehouse.org.uk](http://www.morehouse.org.uk)

---

### Queen's Gate School

133 Queen's Gate, London SW7 5LE

☎ 020 7589 3587

✉ [info@queensgate.org.uk](mailto:info@queensgate.org.uk)

🌐 [www.queensgate.org.uk](http://www.queensgate.org.uk)

---

### Thomas's Preparatory and Lower School, Kensington

17-19 Cottessmore Gardens, London W8 5PR

☎ 020 7361 6500

✉ [kenregistrar@thomas-s.co.uk](mailto:kenregistrar@thomas-s.co.uk)

🌐 [www.thomas-s.co.uk](http://www.thomas-s.co.uk)

# Locations and contacts



# Other authorities

## Contact details for neighbouring boroughs

Detailed information about schools outside the Royal Borough of Kensington and Chelsea and Westminster is available directly from schools or the local authority in which they are situated.

Please remember to check the admission arrangements for your preferred schools to assess whether you are likely to be offered a place. You may also be required to complete a supplementary form.

If you live outside the Royal Borough of Kensington and Chelsea but wish to apply for a school in Kensington and Chelsea, you will need to apply on the common application form of the local authority where you live.

### Barking and Dagenham

- ☎ 020 8215 3004
- ✉ [admissions@lbbd.gov.uk](mailto:admissions@lbbd.gov.uk)
- 🌐 [www.lbbd.gov.uk/admissions](http://www.lbbd.gov.uk/admissions)

---

### Barnet

- ☎ 020 8359 7651
- ✉ [school.admissions@barnet.gov.uk](mailto:school.admissions@barnet.gov.uk)
- 🌐 [www.barnet.gov.uk/school-admissions](http://www.barnet.gov.uk/school-admissions)

---

### Bexley

- ☎ 020 8303 7777
- ✉ [schooladmissions@bexley.gov.uk](mailto:schooladmissions@bexley.gov.uk)
- 🌐 [www.bexley.gov.uk/admissions](http://www.bexley.gov.uk/admissions)



# Other authorities

## Brent

- ☎ 020 8937 3110
- ✉ [school.admissions@brent.gov.uk](mailto:school.admissions@brent.gov.uk)
- 🌐 [www.brent.gov.uk/admissions](http://www.brent.gov.uk/admissions)

## Bromley

- ☎ 020 8313 4044
- ✉ [school.admissions@bromley.gov.uk](mailto:school.admissions@bromley.gov.uk)
- 🌐 [www.bromley.gov.uk](http://www.bromley.gov.uk)

## Camden

- ☎ 020 7974 1625
- ✉ [admissions@camden.gov.uk](mailto:admissions@camden.gov.uk)
- 🌐 [www.camden.gov.uk/admissions](http://www.camden.gov.uk/admissions)

## City of London

- ☎ 020 7332 1002
- ✉ [fyi@cityoflondon.gov.uk](mailto:fyi@cityoflondon.gov.uk)
- 🌐 [www.cityoflondon.gov.uk](http://www.cityoflondon.gov.uk)

## Croydon

- ☎ 020 8726 6400
- ✉ [school.admissions@croydon.gov.uk](mailto:school.admissions@croydon.gov.uk)
- 🌐 [www.croydon.gov.uk](http://www.croydon.gov.uk)

## Ealing

- ☎ 020 8825 5511/5522
- ✉ [mainroundadmissions@ealing.gov.uk](mailto:mainroundadmissions@ealing.gov.uk)
- 🌐 [www.ealing.gov.uk](http://www.ealing.gov.uk)

## Enfield

- ☎ 020 8379 5501
- ✉ [esas@enfield.gov.uk](mailto:esas@enfield.gov.uk)
- 🌐 [www.enfield.gov.uk](http://www.enfield.gov.uk)

## Greenwich

- ☎ 020 8921 8043
- ✉ [school-admissions@royalgreenwich.gov.uk](mailto:school-admissions@royalgreenwich.gov.uk)
- 🌐 [www.royalgreenwich.gov.uk/admissions](http://www.royalgreenwich.gov.uk/admissions)

## Hackney

- ☎ 020 8820 7489/7501
- ✉ [admissions@learningtrust.co.uk](mailto:admissions@learningtrust.co.uk)
- 🌐 [www.learningtrust.co.uk/admissions](http://www.learningtrust.co.uk/admissions)

## Hammersmith & Fulham

- ☎ 020 8753 1085
- ✉ [school.admissions@lbhf.gov.uk](mailto:school.admissions@lbhf.gov.uk)
- 🌐 [www.lbhf.gov.uk/admissions](http://www.lbhf.gov.uk/admissions)

## Haringey

- ☎ 020 8489 1000
- ✉ [schooladmissions@haringey.gov.uk](mailto:schooladmissions@haringey.gov.uk)
- 🌐 [www.haringey.gov.uk/schooladmissions](http://www.haringey.gov.uk/schooladmissions)

## Harrow

- ☎ 020 8901 2620
- ✉ [schooladmissions@harrow.gov.uk](mailto:schooladmissions@harrow.gov.uk)
- 🌐 [www.harrow.gov.uk/admissions](http://www.harrow.gov.uk/admissions)

## Havering

- ☎ 01708 434600
- ✉ [schooladmissions@havering.gov.uk](mailto:schooladmissions@havering.gov.uk)
- 🌐 [www.havering.gov.uk/admissions](http://www.havering.gov.uk/admissions)

## Hillingdon

- ☎ 01895 556644
- ✉ [admissions@hillington.gov.uk](mailto:admissions@hillington.gov.uk)
- 🌐 [www.hillingdon.gov.uk](http://www.hillingdon.gov.uk)

## Hounslow

- ☎ 020 8583 2711
- ✉ [admissions@hounslow.gov.uk](mailto:admissions@hounslow.gov.uk)
- 🌐 [www.hounslow.gov.uk/admissions](http://www.hounslow.gov.uk/admissions)

## Islington

- ☎ 020 7527 5515
- ✉ [admissions@islington.gov.uk](mailto:admissions@islington.gov.uk)
- 🌐 [www.islington.gov.uk/admissions](http://www.islington.gov.uk/admissions)

## Kingston upon Thames

- ☎ 020 8547 4610
- ✉ [kingston.admissions@achievingforchildren.org.uk](mailto:kingston.admissions@achievingforchildren.org.uk)
- 🌐 [www.kingston.gov.uk](http://www.kingston.gov.uk)

## Lambeth

- ☎ 020 7926 9503
- ✉ [schooladmissions@lambeth.gov.uk](mailto:schooladmissions@lambeth.gov.uk)
- 🌐 [www.lambeth.gov.uk/admissions](http://www.lambeth.gov.uk/admissions)

# Other authorities

## Lewisham

- ☎ 020 8314 8282
- ✉ [schooladmissions@lewisham.gov.uk](mailto:schooladmissions@lewisham.gov.uk)
- 🌐 [www.lewisham.gov.uk/admissions](http://www.lewisham.gov.uk/admissions)

## Merton

- ☎ 020 8274 4906
- ✉ [admissions@merton.gov.uk](mailto:admissions@merton.gov.uk)
- 🌐 [www.merton.gov.uk](http://www.merton.gov.uk)

## Newham

- ☎ 020 8430 2000
- ✉ [pupil.services@newham.gov.uk](mailto:pupil.services@newham.gov.uk)
- 🌐 [www.newham.gov.uk](http://www.newham.gov.uk)

## Redbridge

- ☎ 020 8554 5000
- ✉ [admissions@redbridge.gov.uk](mailto:admissions@redbridge.gov.uk)
- 🌐 [www.redbridge.gov.uk/schools](http://www.redbridge.gov.uk/schools)

## Richmond upon Thames

- ☎ 020 8547 5569
- ✉ [richmond.admissions@achievingforchildren.org.uk](mailto:richmond.admissions@achievingforchildren.org.uk)
- 🌐 [www.richmond.gov.uk](http://www.richmond.gov.uk)

## Southwark

- ☎ 020 7525 5337
- ✉ [schools.admissions@southwark.gov.uk](mailto:schools.admissions@southwark.gov.uk)
- 🌐 [www.southwark.gov.uk](http://www.southwark.gov.uk)

## Sutton

- ☎ 020 8770 5000
- ✉ [suttonadmissions@cognus.org.uk](mailto:suttonadmissions@cognus.org.uk)
- 🌐 [www.sutton.gov.uk](http://www.sutton.gov.uk)

## Tower Hamlets

- ☎ 020 7364 5000
- ✉ [school.admissions@towerhamlets.gov.uk](mailto:school.admissions@towerhamlets.gov.uk)
- 🌐 [www.towerhamlets.gov.uk](http://www.towerhamlets.gov.uk)

## Waltham Forest

- ☎ 020 8496 3000
- ✉ [admissions@walthamforest.gov.uk](mailto:admissions@walthamforest.gov.uk)
- 🌐 [www.walthamforest.gov.uk](http://www.walthamforest.gov.uk)

## Wandsworth

- ☎ 020 8871 7316
- ✉ [admissions@wandsworth.gov.uk](mailto:admissions@wandsworth.gov.uk)
- 🌐 [www.wandsworth.gov.uk](http://www.wandsworth.gov.uk)

## Westminster

- ☎ 020 7745 6433
- ✉ [schooladmissions@westminster.gov.uk](mailto:schooladmissions@westminster.gov.uk)
- 🌐 [www.westminster.gov.uk](http://www.westminster.gov.uk)

### Contact details for diocesan authorities

The Diocese of Westminster Education Service and London Diocesan Board for Schools provide additional information about education in Catholic and Church of England schools respectively.

#### Diocese of Westminster Education Service (Catholic)

- ☎ 020 7798 9009
- 🌐 [www.rcdow.org.uk/education](http://www.rcdow.org.uk/education)

#### London Diocesan Board for Schools (Church of England)

- ☎ 020 7932 1100
- 🌐 [www.l dbs.co.uk](http://www.l dbs.co.uk)





# The borough of Kensington and Chelsea

## Locations of Kensington and Chelsea's educational establishments

Each location is pinpointed on the map on the next page

### Community nurseries and children's centres

- 1 **Chelsea Open Air Nursery School**  
51 Glebe Place SW3 5JE
- 2 **Golborne & Maxilla Nursery School**  
2a Bevington Road W10 5TN
- 3 **St Anne's and Avondale Park Nursery**  
Sirdar Road W11 4EE

### Community primary schools

- 4 **Ashburnham**  
17 Blantyre Street SW10 0DT
- 5 **Avondale Park**  
Sirdar Road W11 4EE
- 6 **Barlby**  
Treverton Street W10 6DW
- 7 **Bevington**  
Bevington Road W10 5TW
- 8 **Bousfield**  
South Bolton Gardens SW5 0DJ
- 9 **Colville**  
Lonsdale Road W11 2DF
- 10 **Fox**  
Kensington Place W8 7PP
- 11 **Marlborough**  
Draycott Avenue SW3 2NA
- 12 **Oxford Gardens**  
Oxford Gardens W10 6NF
- 13 **Park Walk**  
Park Walk SW10 0AY
- 14 **Thomas Jones**  
St Mark's Road W11 1RQ

### Voluntary aided primary schools

- 15 **Christ Church C of E – Federation of Christ Church and Holy Trinity C of E**  
1 Robinson Street SW3 4AA
- 16 **Holy Trinity C of E – Federation of Christ Church and Holy Trinity C of E**  
Sedding Street SW1X 9DE
- 17 **Oratory Catholic**  
Bury Walk, Cale Street SW3 6QH
- 18 **Our Lady of Victories Catholic**  
Clareville Street SW7 5AQ
- 19 **Servite Catholic**  
252 Fulham Road SW10 9NA
- 20 **St Barnabas and St Philip's C of E**  
Pembroke Mews,  
58 Earls Court Road W8 6EJ
- 21 **St Charles Catholic**  
83 St Charles Square W10 6EB
- 22 **St Clement and St James C of E**  
Penzance Place W11 4PG
- 23 **St Cuthbert with St Matthias C of E**  
Warwick Road SW5 9UE
- 24 **St Francis of Assisi Catholic**  
Treadgold Street W11 4BJ
- 25 **St Joseph's Catholic**  
Cadogan Street SW3 2QT
- 26 **St Mary Abbots C of E**  
2 Kensington Church Court  
W8 4SP
- 27 **St Mary's Catholic**  
East Row W10 5AW
- 28 **St Thomas' C of E**  
Appleford Road W10 5EF

### Primary academies and free schools

- 29 **Ark Brunel Academy**  
Middle Row W10 5AT
- 30 **Kensington Primary Academy**  
205 Warwick Road W14 8PU

### Secondary schools

- 31 **All Saints Catholic College (Catholic mixed)**  
75 St Charles Square W10 6EL
- 32 **The Cardinal Vaughan Memorial School (Catholic boys)**  
89 Addison Road W14 8BZ
- 33 **Chelsea Academy (mixed)**  
Lots Road SW10 0AB
- 34 **Holland Park School (mixed)**  
Airlie Gardens W8 7AF
- 35 **Kensington Aldridge Academy (mixed)**  
1 Silchester Road W10 6EX
- 36 **St Thomas More Language College (Catholic mixed)**  
42 Cadogan Street SW3 2QS

### Special and other schools

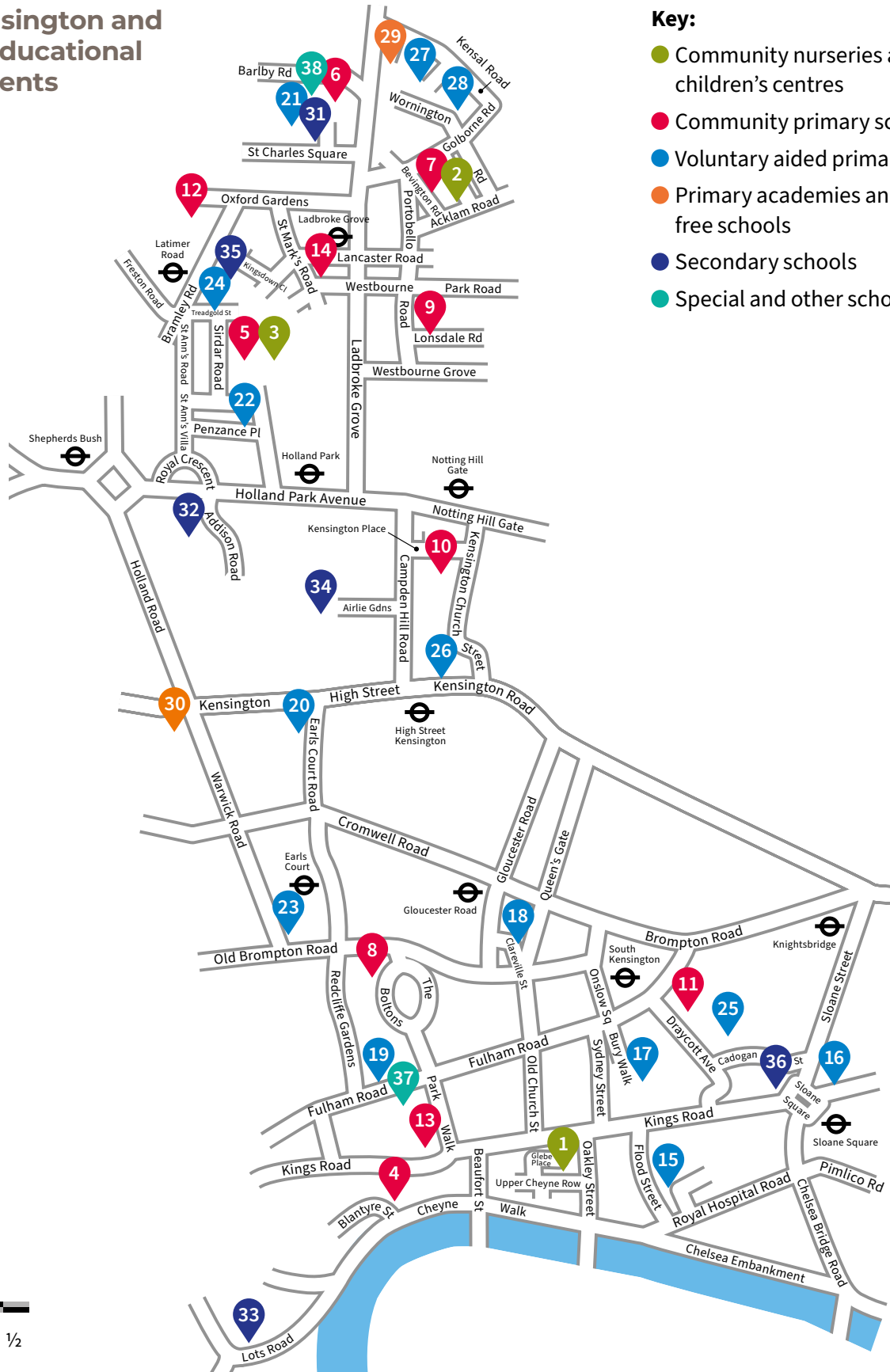
- 37 **Chelsea Community Hospital School**  
Chelsea & Westminster Hospital,  
369 Fulham Road, SW10 9NH
- 38 **Kensington Queensmill School**  
Barlby Road, W10 6BH
- 39 **Parkwood Hall Co-Operative Academy**  
Beechenlea Lane, Swanley, Kent,  
BR8 8DR (not shown on map)

# The borough of Kensington and Chelsea

## Map of Kensington and Chelsea's educational establishments

**Key:**

- Community nurseries and children's centres
- Community primary schools
- Voluntary aided primary schools
- Primary academies and free schools
- Secondary schools
- Special and other schools



# Privacy Notice

## Privacy notice for admissions and access to education

### Purpose for processing your information

The School Admission service is the coordinator body for the application process for schools and academies and the initial contact point for school admissions related enquiries.

### We collect the following information:

Information we request from you is for the purpose of processing your school application. These are: full name of your child, date of birth, home address, parent/carers full name, address if different from your child, your contact details including phone numbers and email address, Council Tax number, current or previous education provision, professional supporting documents if relevant to your application, background education history of applying for as an in-year admission, country of origin if a new arrival to the country and length of stay in the UK.

This information is only used for the intended purpose but if we intend to use it for any other purpose, we will normally ask you first. In some cases, the Council may use your information for another purpose if it has a legal duty to do so, to provide a complete service to you, to prevent and detect fraud, or if there is a risk of serious harm or threat to life.

### How we collect your information

The initial application for a school place can either be submitted online or a hard copy paper. Additional information will be requested either by letter, email, telephone or face-to-face.

### Who the information is shared with

The Admissions Team may also use your information for other legitimate purposes and may share (where necessary) with other Council departments and external bodies responsible for administering services to children and young people. Reasons for sharing information with the internal and external bodies will be; to enable the processing of school applications, to fulfil the Council's safeguarding duty and comply with the Prevent Strategy, and to provide Central Government bodies with mandatory data returns, the Home Office to notify of

potential illegal immigration and the Police may request information at any time as part of a criminal investigation.

Internal bodies are; the SEND (Special Educational Needs & Disabilities) team, the Virtual School, the Data Team, the Early Help Service, the MASH Team and Safeguarding service, the Early Years' Service, Governance and Legal Services.

External bodies are; schools/academies (previous current and applied for); other Councils/boroughs and the Police. Central Government bodies comprising of the Department for Education, the Local Government Ombudsmen and the Office of the School Adjudicator; the Home Office and the Department of Work and Pension.

For the purpose of validating proof of address, the School Admissions Team will refer to data held by any of the services mentioned above, internal Council Tax records, the Housing Team, Parking Services and the Fraud Team.

### How long do we keep your information?


The Admissions Team will keep your application record for three years. After this time it will be deleted.

### Your rights and access to your information

You have the right to request a copy of the information that we hold about you.

The new General Data Protection Regulation also gives you additional rights about the information we hold about you and how we use it, including the right to:

- Withdraw consent and the right to object and restrict further processing of your data; however, this may affect service delivery to you.
- Request to have your data deleted where there is no compelling reason for its continued processing and provided that there are no legitimate grounds for retaining it.
- Request your data to be rectified if it is inaccurate or incomplete.
- Have your data transferred or copied should you move to another authority.
- Not be subject to automated decision-making including profiling.

To submit a Subject Access Request email the Admissions Team at: [school.admissions@rbkc.gov.uk](mailto:school.admissions@rbkc.gov.uk) 

# Privacy Notice

## **If you have any concerns**


Please contact us if you would like to know more about the information we hold about you and how we use it.

The School Admissions Team can be contacted on tel: 020 7745 6432 between 9am to 2pm Monday to Friday.

You have a right to complain to us if you think we have not complied with our obligation for handling your personal information; please email the Admissions Team at:

**[school.admissions@rbkc.gov.uk](mailto:school.admissions@rbkc.gov.uk)** 

Your concerns will be investigated via the respective Council's complaints procedures.

If you are not satisfied with the Council's response you have a right to complain to the Information Commissioner's Office (ICO). You can visit the ICO website at: **[www.ico.org.uk/concerns/handling/](http://www.ico.org.uk/concerns/handling/)** 

## **Changes in your circumstances**

You must notify us immediately if there are any changes in your circumstances and personal details so we can maintain an accurate and up to date record of your information.

# Apply online: [www.rbkc.gov.uk/ school-admissions](http://www.rbkc.gov.uk/school-admissions)

The Pan-London eAdmissions site  
opens on Friday 1 September 2023.

If your child was born between  
1 September 2012 and 31 August  
2013, you will need to apply for a  
secondary school place by  
Tuesday 31 October 2023.

## For further information contact:

Admissions Team

Green Zone, 2nd Floor, Town Hall, Hornton Street W8 7NX

☎ 020 7745 6432

✉ [school.admissions@rbkc.gov.uk](mailto:school.admissions@rbkc.gov.uk)

🌐 [www.rbkc.gov.uk/school-admissions](http://www.rbkc.gov.uk/school-admissions)



© August 2023 Kensington and Chelsea Council  
Ref 1122 design@rbkc.gov.uk

The information provided in this brochure is correct at the time of going to print in August 2023. The admissions process and school admission arrangements are set out in accordance with the current Admissions Code (issued May 2021), Section 84 of the School Standards and Framework Act 1998. Any corrections, updates and additions will be published on our website: [www.rbkc.gov.uk/school-admissions](http://www.rbkc.gov.uk/school-admissions)

On the cover: Holland Park School, image courtesy of the school

Picture credits: Pages 5, 6, 7 (on the left), 24, 36, 37, 39, 54, 64 courtesy of Chelsea Academy; pages 7 (on the right), 8, 57, 58, 59 © iStock; pages 10, 22, 23, 32, 33 courtesy of The Cardinal Vaughan Memorial School; pages 14, 15, 16, 20 © Thinkstock; pages 25, 46, 47, 48, 61 courtesy of Kensington Aldridge Academy; pages 26, 28, 29, 55 courtesy of All Saints Catholic College; pages 41, 42, 43 courtesy of Holland Park School