



Ecology Service

Events Programme 2015



The Holland Park Ecology Centre was opened in September 2013 providing a purpose built base for the Royal Borough of Kensington and Chelsea Ecology Service. The Centre is a fantastic environmental education resource for schools and residents to enjoy and learn about the natural environment.

The Centre also provides a unique space that can be hired for birthday parties, functions, meetings and training events.

Ecology Service Events Programme 2015

Welcome to the Ecology Services events programme for 2015.

This year we are offering a wide range of informative walks and talks on environment and wildlife topics, workshops, Ecology Centre and Wildlife Area open days, and fun and exciting children's holiday activities.

Our events programme takes place in Holland Park which allows you to explore and learn about the wildlife and biodiversity in the Royal Borough. Whether you're a local resident or visiting from further afield we hope that you enjoy this exciting programme and look forward to you joining us.

The Ecology Centre is the meeting point for most of our events.

About us

The Ecology Service was established in 1991 to provide environmental education to local schools and the general public. There is no substitute for first hand experience and the Ecology Centre has the facilities, equipment and resources to offer valuable opportunities for active outdoor learning.

Our work includes:

- promoting awareness and understanding of biodiversity and the local environment through formal and informal education
- protecting sites which are important for nature conservation
- developing local policies for nature conservation
- advising on the management of open spaces to enhance biodiversity within the borough.

Environmental visits for schools

The Ecology Centre provides a key facility for local schools to study and enjoy the natural environment, and can be booked for field trips and environmental education workshops throughout the year. Outdoor investigations take place in the Holland Park Wildlife Area, which features a wildlife pond with a dipping platform; woodland and grassland habitats. Visiting groups can work independently or with a member of staff.

Children's holiday activities

The Ecology Centre runs a scheme of outdoor and creative activities for five to 12 year olds in the spring, summer, and half-term holidays.

Booking events

Due to high demand, booking is essential for all children's holiday activities and for all adult walks and talks. Please book events by phone, email or via our website. Spaces will be allocated on a first come, first served basis.

Opening times

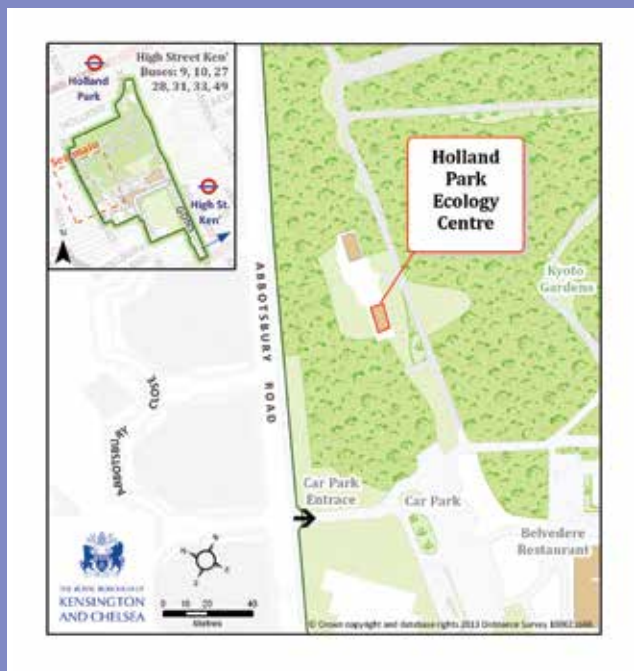
Since September 2013 we have been based in our new purpose-built Ecology Centre within Holland Park. The Centre will be open:

Monday to Friday: 3 to 5pm

Occasionally the opening of the centre will coincide with one of our education sessions, holiday activities, events or Centre hire and therefore will not be open to the general public during our regular opening hours.

No dogs policy

Please do not bring dogs with you to any of our events since they may scare off the wildlife.



How to find us

The Holland Park Ecology Centre is located next to the Adventure Playground near the Abbotsbury Road Car Park, Holland Park.

We strongly advise using public transport if possible.

Travelling by bus: Buses 9, 10, 27, 28, 49 and 328

London Underground: Holland Park (Central) and High Street Kensington (Circle & District)

London Overground: Olympia

 Holland Park Ecology Centre, Holland Park, Ilchester Place, London, W8 6LU

 ecology.centre@rbkc.gov.uk

 020 7938 8186

 www.rbkc.gov.uk/ecology

Follow us on **Twitter**  [rbkc_ecology](https://twitter.com/rbkc_ecology)

or become a **Facebook** fan  R.B.K.C. Ecology

Recurring events

Task Force 4 Nature Volunteer Days

On the third Saturday of each month (except for December, which is the second Saturday) you can join us for a practical conservation volunteer workday in Holland Park. It is a great opportunity to get out and about, meet new people, get active, help local wildlife and have fun. Tasks in the past have included clearing vegetation, cleaning the pond out, scything and planting out.

The workdays are free to attend and are aimed at adult participants. We meet outside the Holland Park Cafe at **10.30am**, finishing at **3.30pm**. Tea, gloves, tools and instructions are provided.

Task Force 4 Nature volunteer days are on Saturdays:

21 February, 21 March, 18 April, 16 May, 20 June, 18 July, 15 August, 19 September, 17 October, 21 November, 12 December.

 10.30am to 3.30pm, Holland Park Cafe

For more information:

Contact the Ecology Centre on 020 7938 8186 or visit ecologycentre@rbkc.gov.uk

Bird and Nature Walks

The Friends of Holland Park organise a Bird and Nature Walk on the first Saturday of each month. Led by varying people knowledgeable in the wildlife and botany of Holland Park, these guided nature walks around the park look for fauna and flora of seasonal interest. They also include updates on ecology-related matters in the park.

The walks are open to the general public who have interest in birds and nature. Walks run from **9** to **10.30am**, meeting at Holland Park Cafe.

Bird and Nature Walks are free to attend and occur on Saturdays:

3 January, 7 February, 7 March, 4 April, 2 May, 6 June, 4 July, 1 August, 5 September, 3 October, 7 November, 5 December 2014.

 9 to 10.30am, Holland Park Cafe

For further information:

For further information contact the Friends of Holland Park on 020 7602 0304 or visit www.thefriendsofhollandpark.org



Events

FEBRUARY

Saturday 7 February Bird and Nature Walk

Monday 16 to Friday 20 February Half Term Holiday Activities

The Ecology Service runs a scheme of environmental activities for children in the half term holiday utilising the park and our wooded Wildlife Area. Our fun packed programme for five to ten year olds will include sessions on orienteering, spring, creepy crawlies, worms and animal tracks. See our website for the full programme of activities.



🕒 10am to 12 noon; 2 to 4pm, Holland Park Ecology Centre

💷 £4.20 per 2hr session (RBKC residents);
£5.40 per 2hr session (non-residents)

B C

Saturday 21 February Task Force 4 Nature Volunteer Day

Saturday 21 February Moss Walk

Discover the mosses that grow in the park on a walk with retired bryologist and botanist Alan Harrington. Please bring your own hand lens of at least x10 magnification.

🕒 11am to 1pm, Stable Yard, Holland Park

B 020 7602 0304

F A Organised by the Friends of Holland Park

Key:

🕒 time and location 💷 cost **F** free **B** booking essential **A** aimed at adults **C** aimed at children



Saturday 21 February

Winter Tree Walk: The Basics

This walk, led by a member of the Ecology Education Team, gives a basic introduction to native tree species. Learn how to hone your identification of trees using their twigs, buds and bark as we wander around Holland Park.

🕒 1 to 3pm, Holland Park Ecology Centre **F B A**

MARCH

Saturday 7 March

Bird and Nature Walk

Saturday 21 March

Task Force 4 Nature Volunteer Day

Saturday 21 March

Seeds of Spring: Ecology Centre Open Day

This drop-in event is an opportunity for you to enjoy and learn more about the Edible Forest Teaching Garden and our ecology wildlife garden. Come and make your own seed bomb and sow some seeds in a paper pot to take home.

🕒 Drop-in: 12 noon to 4pm, Holland Park Ecology Centre

F A C *Sponsored by the Friends of Holland Park*

APRIL

Saturday 4 April

Bird and Nature Walk in Holland Park

Tuesday 7 to Friday 17 April

Spring Children's Holiday Activities

The Ecology Centre runs a full programme of fun outdoor and creative activities for children in the Easter holidays. Outdoor activities are based in our wooded Wildlife Area and include animal tracking, camouflage and the ever popular pond dipping. We also run craft-focused sessions about different animals or with a seasonal theme. Two-hour sessions for five to ten year olds run from 10am to 12 noon and 2 to 4pm. One longer session for eight to 12 year olds will also run. Further information will be published on our website closer to the time.



Holland Park Ecology Centre



£4.30 per 2hr session or £8.10 per 4hr session (RBKC residents);
£5.50 per 2hr session or £9.70 per 4hr session (non-residents)



Friday 17 April

Children's Night Safari

Join the Ecology Team for a fun-filled evening to search for the park's nocturnal inhabitants and explore the woods at night. For five to ten year olds only. All children must be accompanied by an adult. Please bring a torch with you.



7 to 9pm, Holland Park Ecology Centre



£4.30 per 2hr session (RBKC residents);
£5.50 per 2hr session (non-residents)



Saturday 18 April

Task Force 4 Nature Volunteer Day

Key:



time and location



cost



free



booking essential



aimed at adults



aimed at children

Tuesday 21 April

Amphibian Walk and Talk

Frogs, toads and newts are the focus of this evening event. Alex Draper of Froglife will be leading this talk followed by a walk around the park to search for amphibians in the ponds and wood. Please bring a torch.

🕒 7.30 to 9.30pm, Holland Park Ecology Centre

F B A *Sponsored by the Friends of Holland Park*

Saturday 25 April

Dawn Chorus Bird Walk

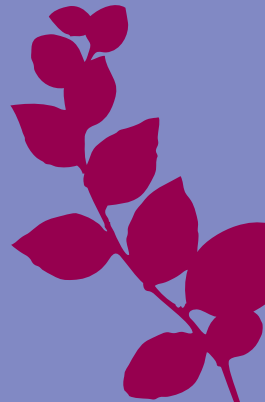
Early spring is an excellent time to experience the world's oldest wake-up call – the dawn chorus – and the beauty of bird song. Led by professional ornithologist, Bill Haines. This event has an early start and offers listeners a truly memorable experience as the dawn chorus builds from the first cheep to a crescendo of birdsong.

🕒 5am, Abbotsbury Road Car Park, Holland Park

F B A *Sponsored by the Friends of Holland Park*



CREDIT: DAVID DL BIRD BRAIN



MAY



Saturday 2 May **Bird and Nature Walk**

Wednesday 13 May **Spring Bat Walk**

Discover the park's flying nocturnal residents with Philip Briggs of the London Bat Group. After an introductory talk, head on a walk around Holland Park to search for these mammals equipped with bat detectors. Please bring a torch with you.

🕒 8.30pm, Holland Park Ecology Centre

F B *Donations to the London Bat Group are encouraged*

A *Sponsored by the Friends of Holland Park*

Saturday 16 May **Task Force 4 Nature Volunteer Day**

Key:

🕒 time and location 💰 cost **F** free **B** booking essential **A** aimed at adults **C** aimed at children

2015 Events Programme

FEB	Saturday 7	Friends of Holland Park Bird and Nature Walk, 9-10.30am
	Monday 16 to Friday 20	Half Term Children's Holiday Activities
	Saturday 21	Task Force 4 Nature Volunteer Day, 10.30am-3.30pm
	Saturday 21	Friends of Holland Park Moss Walk, 11am-1pm
	Saturday 21	Winter Tree Walk: The Basics, 1-3pm
MAR	Saturday 7	Friends of Holland Park Bird and Nature Walk, 9-10.30am
	Saturday 21	Task Force 4 Nature Volunteer Day, 10.30am-3.30pm
	Saturday 21	Seeds of Spring: Ecology Centre Open Day, Drop-in 12 noon-4pm
APR	Saturday 4	Friends of Holland Park Bird and Nature Walk, 9-10.30am
	Tuesday 7 to Friday 17	Spring Children's Holiday Activities
	Friday 17	Children's Night Safari, 7-9pm
	Saturday 18	Task Force 4 Nature Volunteer Day, 10.30am-3.30pm
	Tuesday 21	Amphibian Walk and Talk, 7.30-9.30pm
	Saturday 25	Dawn Chorus Bird Walk, 5am
MAY	Saturday 2	Friends of Holland Park Bird and Nature Walk, 9-10.30am
	Wednesday 13	Bat Walk, 8.30pm
	Saturday 16	Task Force 4 Nature Volunteer Day, 10.30am-3.30pm
	Thursday 21	Urban Botany Walk, 6.30-8pm
	Tuesday 26 to Friday 29	Half Term Children's Holiday Activities
JUN	Saturday 6	Friends of Holland Park Bird and Nature Walk, 9-10.30am
	Saturday 6	Amphibian Antics: Wildlife Area Open Day, Drop-in 2-6pm
	Thursday 11	Flora and Folklore, 6.30-8pm
	Saturday 20	Butterfly and Moth Morning, 10am-12 noon
	Saturday 20	Task Force 4 Nature Volunteer Day, 10.30am-3.30pm
	Wednesday 24	Plants and Pollinators Walk, 6.30-8pm
	Saturday 27	Friends of Holland Park Summer Tree Walk, 11am-1pm

JUL	Saturday 4	Friends of Holland Park Bird and Nature Walk, 9-10.30am
	Wednesday 8	Parakeet Walk and Talk, 7-8.30 pm
	Saturday 11	Bumblebee Walk and Talk, 2.30-4.30pm
	Wednesday 15	Summer Tree Walk: The Basics, 6.30-8pm
	Saturday 18	Task Force 4 Nature Volunteer Day, 10.30am-3.30pm
	Saturday 18	Busy Bees: Ecology Centre Open Day, Drop-in 2-6pm
	Monday 27 July to Friday 28 August	Summer Children's Holiday Activities
	Thursday 30	Stag Beetle Talk, 6.30-8pm
AUG	Saturday 1	Friends of Holland Park Bird and Nature Walk, 9-10.30am
	Saturday 15	Dragonflies: Wildlife Area Open Day, Drop-in 2-6pm
	Saturday 15	Task Force 4 Nature Volunteer Day, 10.30am-3.30pm
	Friday 28	Children's Night Safari, 7-9pm
SEP	Saturday 5	Bird Ringing Demonstration, Drop-in 7-11am
	Saturday 5	Friends of Holland Park Bird and Nature Walk, 9-10.30am
	Wednesday 16	Bat Walk, 6.30-8pm
	Saturday 19	Task Force 4 Nature Volunteer Day, 10.30am-3.30pm
	Saturday 19	Flora and Folklore, 2-4pm
OCT	Saturday 3	Friends of Holland Park Bird and Nature Walk, 9-10.30am
	Saturday 3	Pond Survey: Wildlife Area Open Day
	Saturday 17	Task Force 4 Nature Volunteer Day, 10.30am-3.30pm
	Saturday 17	Friends of Holland Park Autumn Tree Walk, 11am-1pm
	Saturday 17	Apple Pressing: Ecology Centre Open Day, Drop-in 12 noon-4pm
	Saturday 24	Fungi Foray in Holland Park, 2-4pm
	Monday 26 to Friday 30	Half Term Children's Holiday Activities
	Friday 30	Children's Night Safari, 4.30-6.30pm
NOV	Saturday 7	Friends of Holland Park Bird and Nature Walk, 9-10.30am
	Saturday 21	Feed the Birds: Ecology Centre Open Day
	Saturday 21	Task Force 4 Nature Volunteer Day, 10.30am-3.30pm
DEC	Saturday 5	Friends of Holland Park Bird and Nature Walk, 9-10.30am
	Saturday 12	Task Force 4 Nature Volunteer Day, 10.30am-3.30pm



Thursday 21 May Urban Botany Walk

Interested in learning how to identify some of our urban plants? Ecologist Annie Chipchase will lead this wildflower walk through the park.

 6.30 to 8pm, Holland Park Ecology Centre

 Sponsored by The Friends of Holland Park

Tuesday 26 to Friday 29 May Half Term Children's Holiday Activities

Children aged five to ten can participate in our nature-themed, outdoor and creative activities to explore the park and Wildlife Area. There will be activities relating to plants, animals and outdoor survival such as shelter building. The activity programme will be available on our website closer to the time.

 10am to 12 noon; 2 to 4pm, Holland Park Ecology Centre

 £4.30 per 2hr session (RBKC residents);
£5.50 per 2hr session (non-residents)





JUNE

Saturday 6 June

Amphibian Antics: Wildlife Area Open Day

Our amphibian focused drop-in event is a great chance to explore this hidden corner of the park. This wooded area is only open to the public a few times a year. In spring the woods are bursting with new life and growth, with spring woodland flowers and trees coming into leaf. Discover which amphibians lurk in the wildlife pond and which ones are hiding in the woods.

🕒 Drop in: 2 to 6pm, Holland Park Wildlife Area, Holland Park

F A C

Saturday 6 June

Bird and Nature Walk



Wednesday 11 June

Flora and Folklore

Learn and share knowledge about plant lore. This evening event around Holland Park will be led by Roy Vickery, a botanist and plant lore expert.

🕒 6.30 to 8pm, Holland Park Ecology Centre

F B A

Saturday 20 June

Task Force 4 Nature Volunteer Day

Key:

🕒 time and location 🏠 cost F free B booking essential A aimed at adults C aimed at children



Saturday 20 June

Butterfly and Moth Morning

Investigate the butterflies and moths found in the park with lepidopterist Tim Freed. Start by discovering which species have been attracted into the moth trap and then take a guided walk to seek out butterflies.

🕒 10am to 12 noon, Holland Park Ecology Centre

F B A *Sponsored by The Friends of Holland Park*

Wednesday 24 June

Plants and Pollinators Walk

Discover how plants and their pollinators have co-evolved through a guided walk in the formal gardens and wildlife areas of the park.

🕒 6.30 to 8pm, Holland Park Ecology Centre

F B A *Sponsored by the Friends of Holland Park*



Saturday 27 June

Friends of Holland Park Summer Tree Walk

Holland Park has an amazing collection of exotic and native trees. Join Alan Harrington, a retired botanist from the Natural History Museum, to discover how to identify different trees around the park and learn some fascinating botanical facts and figures. Contact the Friends of Holland Park for further information on 020 7602 0304 or visit www.thefriendsofhollandpark.org.

🕒 11am to 1pm, Stable Yard, Holland Park

F A *Organised by the Friends of Holland Park*

JULY

Saturday 4 July Bird and Nature Walk

Wednesday 8 July Parakeet Walk and Talk

Interested in learning about research on parakeets? Join this talk led by ornithologist Bill Haines and ecologist Netty Ribeaux, who has studied their distribution and behaviour at Wormwood Scrubs. We will also head outside to see if we can spot some of these birds.

🕒 7 to 8.30pm, Holland Park Ecology Centre

F B A *Sponsored by The Friends of Holland Park*

Saturday 11 July Bumblebee Walk and Talk

Allan Watson and Jinny Seals, volunteers from the Bumblebee Conservation Trust, will give a talk on our native bumblebee species followed by a walk in Holland Park to spot and identify some of these bees.

🕒 2.30 to 4.30pm, Holland Park Ecology Centre

F B *Donations to the Bumblebee Conservation Trust are encouraged*

A *Sponsored by The Friends of Holland Park*

Wednesday 15 July Summer Tree Walk: The Basics

This walk, led by a member of the Ecology Education Team, gives a basic introduction to native tree species. You will learn how to hone your identification skills of trees in leaf using examples found in Holland Park.

🕒 6.30 to 8pm,
Holland Park Ecology Centre

F B A



Key:

🕒 time and location 💰 cost **F** free **B** booking essential **A** aimed at adults **C** aimed at children

Saturday 18 July

Task Force 4 Nature Volunteer Day



Saturday 18 July

Busy Bees: Ecology Centre Open Day

The Ecology Centre will be a hive of activity. Discover the world of bees and their importance as pollinators through exploration of the Ecology Centre and garden. There will be bee craft activities for children.

🕒 Drop in: 2 to 6pm, Holland Park Ecology Centre

F A C

Monday 27 July to Friday 28 August

Summer Holiday Children's Activities

Throughout the summer holidays, the Ecology Centre runs a fun-filled environmental themed programme of outdoor and creative activities. Past holidays have included sessions on dragonflies, mammals, spiders, beans, grasses, animal homes and trees. Two-hour sessions for five to ten year olds run from 10am to 12 noon and 2 to 4pm. A few sessions for eight to 12 year olds run from 11am to 3pm. The summer holiday programme will be published on our website closer to the time.

🕒 Holland Park Ecology Centre

£ £4.30 per 2hr session or £8.10 per 4hr session (RBKC residents);
£5.50 per 2hr session or £9.70 per 4hr session (non-residents)

B C

Thursday 30 July

Stag Beetle Talk

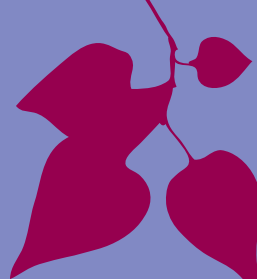
The stag beetle is the UK's largest terrestrial beetle and globally threatened. Learn more about these invertebrates and how we can protect them in this talk led by Laura Bower, the People's Trust for Endangered Species' Conservation Officer.

🕒 6.30-8pm, Holland Park Ecology Centre

F B *Donations to the People's Trust for Endangered Species are encouraged*

A *Sponsored by the Friends of Holland Park*





AUGUST

Saturday 1 August

Bird and Nature Walk

Saturday 15 August

Task Force 4 Nature Volunteer Day

Saturday 15 August

Dragonflies: Wildlife Area Open Day

Summer is the season for dragonflies and damselflies to emerge. Drop in to the Wildlife Area and identify these insects as they hover above the pond. See if you can find their nymphs through pond dipping. Otherwise just stroll around the woods to explore this rarely opened area.

 Drop in: 2 to 6pm, Holland Park Wildlife Area

F A C

Friday 28 August

Children's Night Safari

Discover the park after dark. Children aged between five and ten years can join the Ecology Team for a fun-filled evening to search for the park's nocturnal inhabitants and explore the woods at night. All children must be accompanied by an adult. Please bring a torch with you.

 7 to 9pm, Holland Park Ecology Centre

 £4.30 per 2hr session (RBKC residents);
£5.50 per 2hr session (non-residents)

B C

Key:

 time and location  cost  free  booking essential  aimed at adults  aimed at children

SEPTEMBER

Saturday 5 September

Bird and Nature Walk in Holland Park

Saturday 13 September

Bird Ringing Demonstration

Drop in to the Wildlife Area to see wild birds in the hand and hear about how the national ringing programme works. You will also learn how bird ringing aids conservation and our knowledge of birds' migratory patterns.

🕒 Drop-in: 7 to 11am, Holland Park Wildlife Area

F A C *Sponsored by The Friends of Holland Park*



Saturday 5 September

Bird and Nature Walk

Wednesday 16 September

Bat Walk

Join an expert from the London Bat Group and delve into the nocturnal world of bats. Learn about their natural history in an informative talk before searching for them within Holland Park, equipped with bat detectors. Please bring a torch with you.

🕒 6.30pm, Holland Park Ecology Centre

F B A *Sponsored by The Friends of Holland Park*

Saturday 19 September

Task Force 4 Nature Volunteer Day

Saturday 19 September

Flora and Folklore

Learn and share knowledge about plant lore. This afternoon event around Holland Park will be led by Roy Vickery, a botanist and plant lore expert.

🕒 2 to 4pm, Holland Park Ecology Centre

F B A *Sponsored by The Friends of Holland Park*

OCTOBER

Saturday 3 October **Bird and Nature Walk**

Saturday 3 October **Pond Survey: Wildlife Area Open Day**

Holland Park's Wildlife Area will be open for you to explore. Discover how healthy our pond is through pond dipping.

🕒 Drop in: 12 noon to 4pm, Holland Park Wildlife Area

F A C

Saturday 17 October **Task Force 4 Nature Volunteer Day**

Saturday 17 October **Friends of Holland Park Autumn Tree walk**



Join botanist, Alan Harrington, to explore Holland Park's collection of native and exotic trees. Discover how to identify different trees on this autumnal walk around the park and learn some fascinating botanical facts and figures. Contact the Friends of Holland Park for further information on 020 7602 0304 or visit www.thefriendsofhollandpark.org.

🕒 11am to 1pm, Stable Yard, Holland Park

F A Organised by the Friends of Holland Park

Saturday 17 October **Apple Pressing: Ecology Centre Open Day**

Join us to celebrate our inaugural Apple Day. It will be a chance to learn about the importance and diversity of this special fruit. There will be apple pressing and apple tasting plus games and craft for the whole family to enjoy.

🕒 12 noon to 4pm, Holland Park Ecology Centre

F A C

Key:

🕒 time and location 💰 cost **F** free **B** booking essential **A** aimed at adults **C** aimed at children



Saturday 24 October

Fungi Foray

Search the Wildlife Area and other enclosures with expert Mark Spencer from the Natural History Museum to find the fungi on display at this time of year. Learn how to identify common species and hopefully discover some great specimens.

 2 to 4pm, Holland Park Ecology Centre

F B A *Sponsored by the Friends of Holland Park*

Monday 26 to Friday 30 October

Half Term Holiday Activities

Nature themed, outdoor and creative activities for children aged five to ten. Please see previous holiday activities on 26 May for more details.

 Holland Park Ecology Centre

 £4.30 per 2hr session (RBKC residents);
£5.50 per 2hr session (non-residents)

B C

Friday 30 October

Children's Night Safari

Join the Ecology Team for a fun-filled evening to search for the park's nocturnal inhabitants and explore the woods at night. For five to ten year olds only. All children must be accompanied by an adult. Please bring a torch with you.

 4.30 to 6.30pm, Holland Park Ecology Centre

 £4.30 per 2hr session (RBKC residents);
£5.50 per 2hr session (non-residents)

B C

NOVEMBER

Saturday 7 November
Bird and Nature Walk

Saturday 21 November
Task Force 4 Nature Volunteer Day

Saturday 21 November
Feed the Birds:
Ecology Centre Open Day

Pop into the Ecology Centre to make a seed ball to feed to the hungry winter birds. Hang it up in the area outside the Ecology Centre or take it home for your garden birds.

 Drop in: 12 noon to 4pm, Holland Park Ecology Centre

F A C



DECEMBER

Saturday 5 December
Bird and Nature Walk

Saturday 12 December
Task Force 4 Nature Volunteer Day

Key:

 time and location  cost  free  booking essential  aimed at adults  aimed at children



Mailing address:
Holland Park Ecology Centre, The Stable Yard, Holland Park,
Ilchester Place, London W8 6LU



ecology.centre@rbkc.gov.uk



020 7938 8186



www.rbkc.gov.uk/ecology

Follow us on **Twitter**  **rbkc_ecology**

or become a **Facebook** fan  **R.B.K.C. Ecology**

