

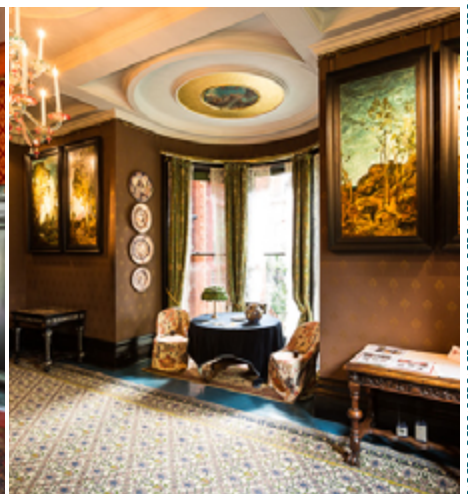


Create & MAKE

Located on the edge of Holland Park in Kensington, Leighton House Museum is the former home and studio of the celebrated Victorian artist, Frederic, Lord Leighton (1830-1896). The house combines studio, living and entertaining space, and a lovely garden. Leighton House is now regarded as one of the most remarkable buildings of the nineteenth century, not least because of the extraordinary domed and tiled Arab Hall on the ground floor. Today it contains an exceptional collection of paintings and sculpture by Leighton and his contemporaries, hosts temporary exhibitions, special public events and an extensive learning programme, and is also regularly used for photography and film shoots.

With this Create and Make you will learn the story of Narcissus & Echo, discover a magical space in Leighton House, do some research and be inspired to create your own pattern, splatter picture or room in a box.

You will need art & craft materials such as paper and pencils, colouring pencils and paints, and a shoebox. Also, access to the internet for research and a printer, if you'd like to keep this booklet.





This is a room in Leighton House Museum.

Tick the colour of the ceiling above the sculpture of the man

☐ Orange ☐ Black ☐ Blue ☐ Gold

Tick the colours of the tiles on the walls around the sculpture

☐ Orange ☐ Turquoise ☐ Sky Blue ☐ Navy Blue

☐ White ☐ Pink ☐ Azure

Tick what you can see on the floor

☐ Flowers ☐ Birds ☐ Fish ☐ People



When you stand in this room you can hear the gentle sounds of water coming from the nearby Arab Hall. Imagine you are standing here. How would you describe this room?

.....

.....

.....



Curator Daniel says ...

"The statue in the middle of this hall is a bronze cast of a statue dug up in Pompeii, in the south of Italy in 1862. It was very popular and many copies were made. Frederic, Lord Leighton thought it was a statue of Narcissus, although we now think it is probably the God of wine and parties, Dionysus."

This is the story of Narcissus, a very handsome but arrogant man, and Echo, a nymph cursed to only be able to repeat what others say.

Narcissus was the son of a river God named Cephissus and a Nymph named Liriope.

Narcissus grew up to be an incredibly handsome young man. People came from far away to see his beauty and lots of people fell in love with him. But no one was good enough for Narcissus. He was proud, vain and selfish.



Narcissus often hunted for deer in the forests, which was where a Nymph named Echo saw him and instantly fell in love with him. But Narcissus rejected her as well.

With her heart broken, Echo fled to a secret spring, where she faded away to just a whisper. Nemesis, a powerful goddess, saw how Narcissus had treated Echo, and decided to take revenge.

One day, Nemesis lured Narcissus to the spring where he lay down to drink the crystal clear water from the shimmering pool. He glimpsed a beautiful face in the water and fell in love. But every time he bent to touch and kiss the face, the water rippled and it vanished before his eyes. When the water became still, the face returned.

Can you guess who or what Narcissus had fallen in love with?

His own reflection! The sun rose and set many times, but still Narcissus stayed by the spring, pining for his love, growing weaker and weaker. In time a flower sprouted and blossomed in his place, the woodland flower which we call the Narcissus.



Curator Daniel says ...

Frederic, Lord Leighton wanted the setting to add meaning to the statue. Do the silvery gold ceiling, the deep blue, shimmering tiles, the rippling light, make you think of glittering, bright, sparkling light on water? Do the flower motifs in the mosaic floor remind you of the Narcissus family of flowers?

If you want to find out more about the Ancient Greeks and Romans, see what Horrible Histories have to say

www.bbc.co.uk/cbbc/shows/horrible-histories



Frederic, Lord Leighton says ...

"It's your turn to create!"

This story has inspired many artists, writers, composers and filmmakers for hundreds of years – can you find some more artworks telling the story of Echo and Narcissus?

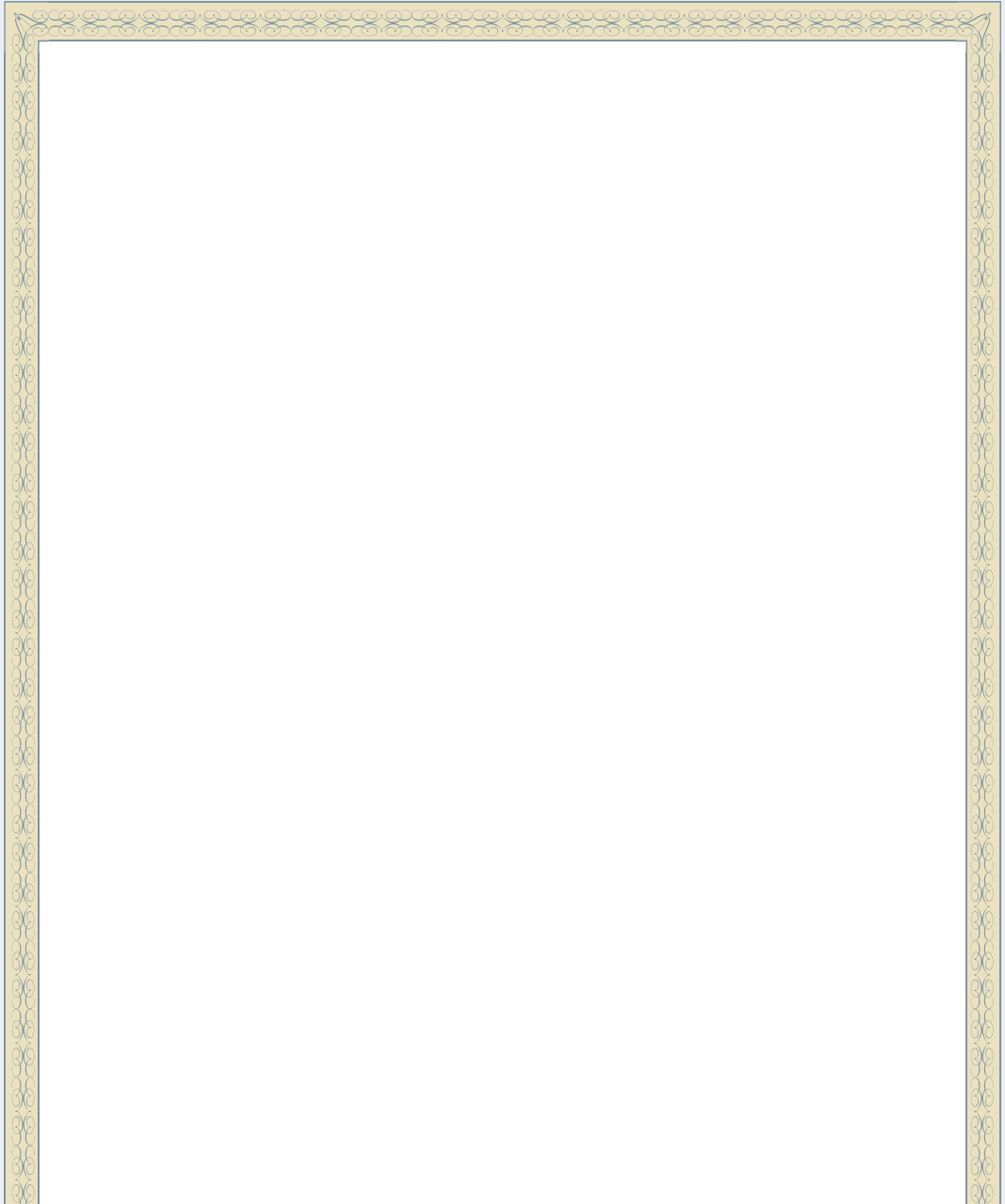
Do some internet research.

When you repeat the same image or design it is called a motif. Can you see how I wanted to repeat the motif of a flower all around the statue of Narcissus? They don't look exactly like the flowers you see growing or might put in a vase at home – they have been stylised for the design, which means they don't look entirely natural.

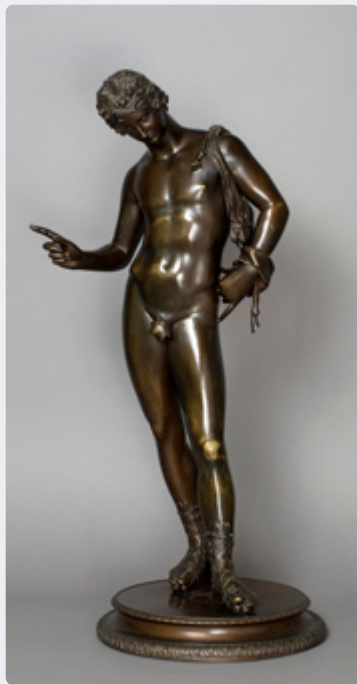
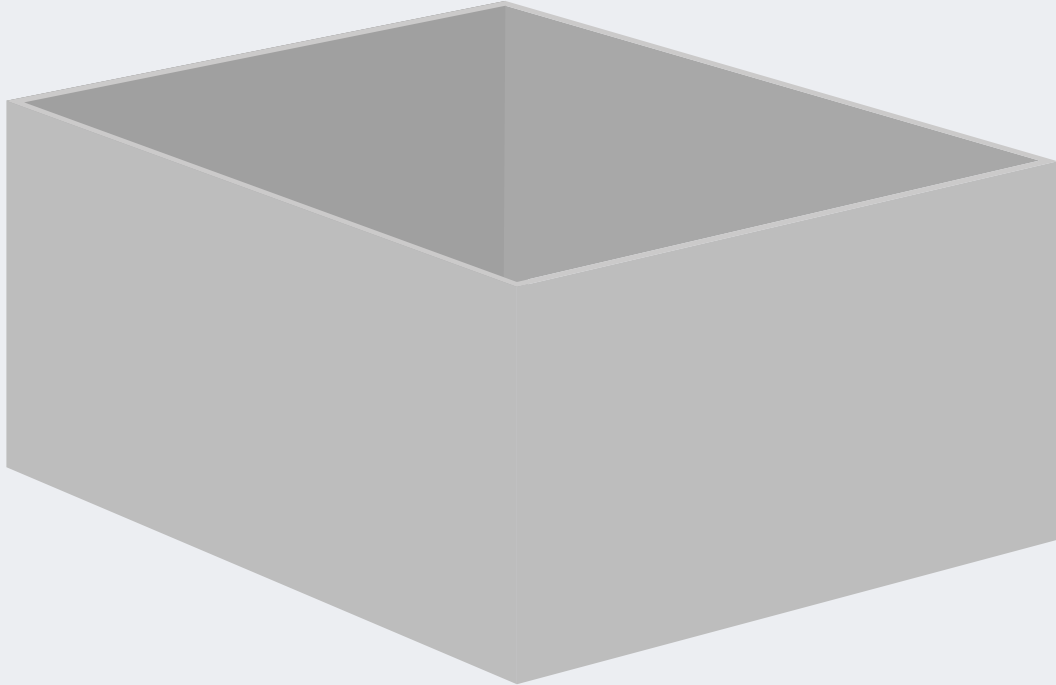
Why don't you try making a repeating pattern from your own drawing of a narcissus or another flower you like?

How would you paint water and reflections? You could try wetting some paper and then dropping paint on top to create watery paint splatters.

I hope you like the way I created a setting for my statue, to help people imagine the story – from the colours on the walls and ceiling, to the sound of the fountain. If you can find an old shoe box at home, you could create and decorate your own 'room in a box' for Narcissus."







Find yourself a shoebox and create your own Narcissus Hall. You could cover the side of the box with tissue paper to create the walls, using lots of different blues! Will you draw your pattern of flowers to create the floor?



Leighton House Museum



LOTTERY FUNDED



THE ROYAL BOROUGH OF
KENSINGTON
AND CHELSEA