

# Holland Park Ecology Centre

2019



## Summer Holiday Activities

Tuesday 30 July to Friday 30 August

[www.rbkc.gov.uk/ecology](http://www.rbkc.gov.uk/ecology)



THE ROYAL BOROUGH OF  
KENSINGTON  
AND CHELSEA

# Welcome

Welcome to our Summer holiday activity guide, with a range of fun and exciting nature-themed activities taking place throughout the summer holidays. We will be exploring the fabulous outdoors along with arts and crafts, shelter building, minibeast hunts and more.

- Children under eight must be accompanied by an adult
- **PRE-BOOKING and PRE-PAYMENT required to secure a place**

To book or for further information contact the Ecology Service on **020 7938 8186** or **ecology.centre@rbkc.gov.uk**.

**The Ecology Centre will be closed on Mondays.**



## WEEK 1

### TUESDAY 30 JULY, 10AM – 12 NOON WOODLAND MASTERPIECES

Make your own leaf creations in the park's gardens and woods.

**For ages four to eight**  
**£5.30 standard/£4.40 concession**

### TUESDAY 30 JULY, 2PM – 4PM PROUD PEACOCKS

Find out about these colourful birds and make your own peacock craft.

**For ages four to eight**  
**£5.30 standard/£4.40 concession**



### WEDNESDAY 31 JULY, 12 NOON – 4PM NATURE EXPLORER DROP-IN AFTERNOON

See all the wildlife and nature that Holland Park has to offer at the drop-in nature explorer afternoon. Why not hire a 'Nature Explorer Bag' to take on your nature quest around the park? **Suitable for children of all ages.**

**Bag Hire: £5 with a £10 refundable deposit (no booking required)**

### THURSDAY 1 AUGUST, 10.30AM – 3PM FOREST DAY

Join us in the woods where you can try your hand at fun forest activities like whittling, knot making and shelter building. Bring outdoor clothing and a packed lunch and get ready to explore! **For ages eight to 12.**

**£28 per child for the day**



### FRIDAY 2 AUGUST, 1.30PM – 4PM WILD THINGS

Join us around the campfire for games and natural crafts. Spend the afternoon exploring the woods with your family and enjoy being in the natural world. **For ages four to eight.**

**£10.20 standard/£8 concession**



## WEEK 2

**TUESDAY 6 AUGUST, 10AM – 12 NOON**

### **WOODLAND FOLK**

Explore our deep dark wood and create your own woodland folk to live there.

**For ages four to eight**

**£5.30 standard/£4.40 concession**

**TUESDAY 6 AUGUST, 2PM – 4PM**

### **WRIGGLY WORMS**

Discover nature's recyclers and make a wormery. Bring an empty 2-litre bottle.

**For ages four to eight**

**£5.30 standard/£4.40 concession**



**WEDNESDAY 7 AUGUST, 12 NOON – 4PM**

### **NATURE EXPLORER DROP-IN AFTERNOON**

See all the wildlife and nature that Holland Park has to offer at the drop-in nature explorer afternoon. Why not hire a 'Nature Explorer Bag' to take on your nature quest around the park? **Suitable for children of all ages.**

**Bag Hire: £5 with a £10 refundable deposit (no booking required)**

**THURSDAY 8 AUGUST, 10.30AM – 3PM**

### **FOREST DAY**

Join us in the woods where you can try your hand at fun forest activities like whittling, knot making and shelter building. Bring outdoor clothing and a packed lunch and get ready to explore! **For ages eight to 12.**

**£28 per child for the day**



The Ecology Centre will be closed on 9 August.

Disclaimer: Programme may change due to unforeseen circumstances



## WEEK 3

**TUESDAY 13 AUGUST, 10AM – 12 NOON**

### **ANIMAL TRACKS**

Investigate animal tracks and trails. Make your own animal footprint cast.

**For ages four to eight**

**£5.30 standard/£4.40 concession**

**TUESDAY 13 AUGUST, 2PM – 4PM**

### **CUNNING CAMOUFLAGE**

Find out how animals keep hidden and play some camouflage games.

**For ages four to eight**

**£5.30 standard/£4.40 concession**

**WEDNESDAY 14 AUGUST, 12 NOON – 4PM**

### **NATURE EXPLORER DROP-IN AFTERNOON**

See all the wildlife and nature that Holland Park has to offer at the drop-in nature explorer afternoon. Why not hire a 'Nature Explorer Bag' to take on your nature quest around the park?  
**Suitable for children of all ages.**

**Bag Hire: £5 with a £10 refundable deposit (no booking required)**

**THURSDAY 15 AUGUST, 10.30AM – 3PM**

### **FOREST DAY**

Join us in the woods where you can try your hand at fun forest activities like whittling, knot making and shelter building. Bring outdoor clothing and a packed lunch and get ready to explore! **For ages eight to 12.**

**£28 per child for the day**



**FRIDAY 16 AUGUST, 1.30PM – 4PM**

### **WILD THINGS**

Join us around the campfire for games and natural crafts. Spend the afternoon exploring the woods with your family and enjoy being in the natural world. **For ages four to eight.**

**£10.20 standard/£8 concession**





## WEEK 4

**TUESDAY 20 AUGUST, 10AM – 12 NOON**

### **BIRDS IN THE PARK**

See what birds we can spot in the park and make a clay model.

**For ages four to eight**

**£5.30 standard/£4.40 concession**

**TUESDAY 20 AUGUST, 2PM – 4PM**

### **FLYING FISH**

Make your own Japanese-inspired fish streamer to take home and fly.

**For ages four to eight**

**£5.30 standard/£4.40 concession**



**WEDNESDAY 21 AUGUST, 12 NOON – 4PM**

### **NATURE EXPLORER DROP-IN AFTERNOON**

See all the wildlife and nature that Holland Park has to offer at the drop-in nature explorer afternoon. Why not hire a 'Nature Explorer Bag' to take on your nature quest around the park? **Suitable for children of all ages.**

**Bag Hire: £5 with a £10 refundable deposit (no booking required)**

**THURSDAY 22, 10.30AM – 3PM**

### **FOREST DAY**

Join us in the woods where you can try your hand at fun forest activities like whittling, knot making and shelter building. Bring outdoor clothing and a packed lunch and get ready to explore! **For ages eight to 12.**

**£28 per child for the day**



**FRIDAY 23 AUGUST, 1.30PM – 4PM**

### **WILD THINGS**

Join us around the campfire for games and natural crafts. Spend the afternoon exploring the woods with your family and enjoy being in the natural world.

**For ages four to eight.**

**£10.20 standard/£8 concession**



## WEEK 5

**TUESDAY 27 AUGUST, 10AM – 12 NOON**

### **NATURE TRAILS**

Discover more about the park's wildlife as you follow our trails in the woods.

**For ages four to eight**

**£5.30 standard/£4.40 concession**

**TUESDAY 27 AUGUST, 2PM – 4PM**

### **ENCHANTED HABITATS**

Collect natural objects to create a miniature world of your own in a shoebox.

**For ages four to eight**

**£5.30 standard/£4.40 concession**



**WEDNESDAY 28 AUGUST, 12 NOON – 4PM**

### **NATURE EXPLORER DROP-IN AFTERNOON**

See all the wildlife and nature that Holland Park has to offer at the drop-in nature explorer afternoon. Why not hire a 'Nature Explorer Bag' to take on your nature quest around the park? **Suitable for children of all ages.**

**Bag Hire: £5 with a £10 refundable deposit (no booking required)**

**THURSDAY 29 AUGUST, 10.30AM – 3PM**

### **FOREST DAY**

Join us in the woods where you can try your hand at fun forest activities like whittling, knot making and shelter building. Bring outdoor clothing and a packed lunch and get ready to explore! **For ages eight to 12.**

**£28 per child for the day**



**FRIDAY 30 AUGUST, 1.30PM – 4PM**

### **HOLLAND PARK STORYTELLING WALK**

Awaken your senses as you listen to stories woven along a walk through the secret corners of Holland Park.

**For ages four to eight.**

**£5.30 standard/£4.40 concession**



# Watch out this summer!

## Nature Photography Competition

Why not take part this summer in our Nature Photography Competition for adults and young people living in the Royal Borough of Kensington and Chelsea. We want you to help us celebrate the biodiversity of the Royal Borough and explore the many places where you can find wildlife on your doorstep. Whether you're new to photography or a budding snapper we want you to send us your nature snaps from around the Borough. The competition will run from Monday 22 July to Saturday 31 August 2019. There are two age groups in the junior competition:

### Junior Competition

- Under 12s
- 12–17 year olds

### Adult Competition

There is also an adult competition for over 18s

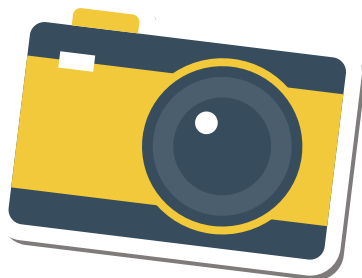
Within the adult competition there will be three categories that you can enter your photos into:

1. Plants and Fungi
2. Animals
3. Urban Wildlife

*There are no sub categories for the Junior Competition except for age.*

Photographs must be taken within the Royal Borough of Kensington and Chelsea. There will be prizes for the winner of each category and an overall prize for the best photograph in the competition. Junior prize winners will also earn a prize for their school.

Full details on the competition, including how to enter and the competition rules, are available on the Ecology Service's webpages – [www.rbkc.gov.uk/ecology](http://www.rbkc.gov.uk/ecology)



## Meet the Minibeasts

Charlie Cockroach and Alex the Snail invite you to meet them and their minibeast friends at the library. Hosted by a minibeast expert from the Borough's Ecology Service, it will be a chance to learn fascinating facts about minibeasts and handle them, if you're brave enough!



Wednesday 31 July	North Kensington Library, 2pm – 3pm
----------------------	--

Wednesday 21 August	Brompton Library, 2pm – 3pm
------------------------	--------------------------------

Wednesday 23 October	Central Library, 2pm – 3pm
-------------------------	-------------------------------

**Free to attend. Book via your local library.**

## Children's Night Safari

Join the Ecology Team for a fun-filled evening searching for Holland Park's nocturnal inhabitants, exploring the woods at night. Please bring a torch if you have one.

Wednesday 28 August, 7pm – 9pm	Eight to 12 year olds
-----------------------------------	--------------------------

Wednesday 23 October, 5pm – 7pm	Four to eight year olds
------------------------------------	----------------------------

£5.30 per child / £4.40 per child Concession (accompanying adult free), **booking essential.**

**Meet at Holland Park Ecology Centre.**  
**All children must be accompanied by an adult.**





# How to find us

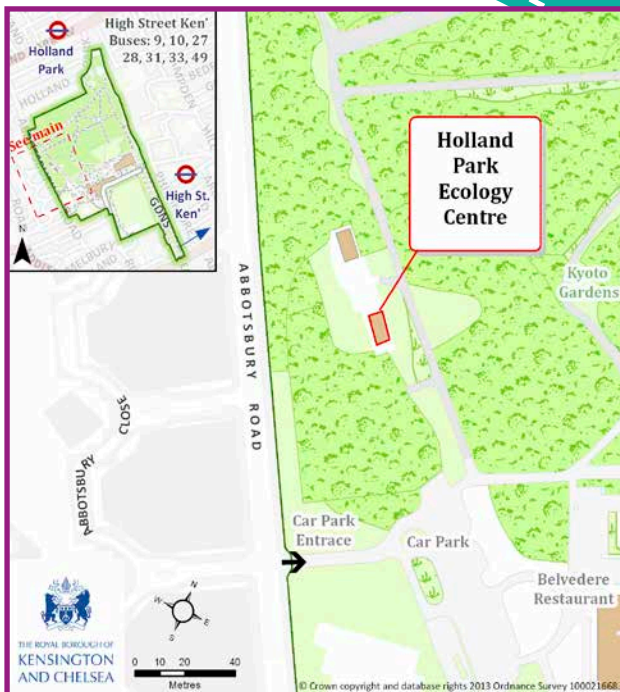
The Holland Park Ecology Centre is in Holland Park, next to the Adventure Playground, near the Abbotsbury Road Car Park, W14 8EJ.

We strongly advise using public transport when visiting us.

**Traveling by bus:** 9, 10, 23, 27, 28, 49 and 328 pass Holland Park.

## London Underground:

The nearest tube stations are Holland Park (Central line) and High Street Kensington (Circle line and District line)



## London Overground:

Kensington Olympia (10-minute walk to Abbotsbury Road Entrance)

**Mailing address:** Holland Park Ecology Centre, The Stable Yard, Holland Park, Ilchester Place, London W8 6LU

**To book or for further information contact the Ecology Service**



020 7938 8186



[ecology.centre@rbkc.gov.uk](mailto:ecology.centre@rbkc.gov.uk)



[www.rbkc.gov.uk/ecology](http://www.rbkc.gov.uk/ecology)

**Follow us on:**



[RBKC\\_Ecology](https://twitter.com/RBKC_Ecology)



[RBKC.Ecology](https://www.facebook.com/RBKC.Ecology)