

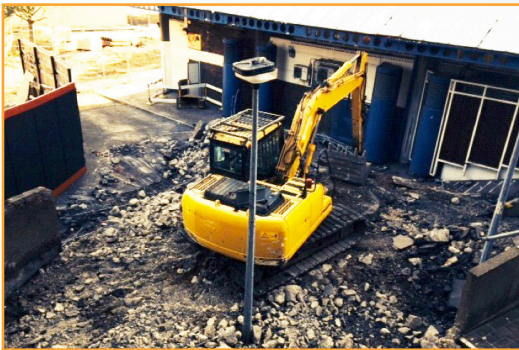


Grenfell Tower Regeneration Newsletter

July 2014

What's been happening?

The demolition of the ramp has now been done and the building's metal canopy around the block is being removed. We're sorry for the inconvenience which the ramp demolition has caused.



The ramp is demolished



The canopy being removed

From next month the main temporary access to Grenfell will be from the walkway leading from Latimer Road or the stairs from Grenfell Road.

We've now put up samples of the cladding panels for the Council's planners to look at and approve; these panels overlook the walkway.

All Rydon employees wear ID badges and corresponding numbered hi-visibility vests. Don't let anyone in your home who does not have professional identification (for security reasons we cannot show what an ID looks like). If you are unsure about anyone knocking at your door 9-5pm on weekdays, call freephone 0800 112 3239.

Community rooms: these have moved to the old estate services office and comprise two main rooms, a kitchen, male and female toilets.

Coffee mornings: successful coffee mornings were held on 26 June and 10 July. Those who came told us that they found it really helpful to have their questions answered.

Contact details

Rydon



Christina Stephanou
Resident Liaison Officer
0800 112 3239
07725 960754
yourcommunity@rydon.co.uk

KCTMO



Claire Williams
Project Manager
020 8964 6064
clwilliams@kctmo.org.uk

Siobhan Rumble
Lancaster West Area
Manager
020 8206 7545
srumble@kctmo.org.uk

Peter Maddison
Director of
Assets & Regeneration
pmaddison@kctmo.org.uk

So what's next?

1. Christina Stephanou will be visiting each household. You will have received a letter inviting you to make an appointment. If you do not make one then she will still need to visit you and will have to call on you unannounced.
2. All satellite dishes will be removed.
3. Once the metal canopy has gone we'll be putting up the scaffolding supports which are needed to install the cladding and replace the windows.
4. Next month Siobhan Rumble and her team will be moving into their new office in the old EMB rooms. We will tell you if their telephone numbers ever change; their new home may become permanent and we will also let you know if this happens.
5. The Dale Youth Boxing Club will be moving to their new home on Ladbroke Grove next month. We wish them well there and look forward to welcoming them back into their new home in the tower at the end of the project.

New flats

The refurbishment programme includes the creation of seven new flats out of the space previously occupied by Social Services and the nursery. In addition, we have been looking into converting the proposed new housing office into two more homes; this means that the whole refurbishment project could create a total of nine new homes. We have therefore applied for planning permission.

Emergency fire arrangements

Our longstanding 'stay put' policy stays in force until you are told otherwise. This means that (unless there is a fire in your flat or in the hallway outside your flat) you should stay inside your flat. This is because Grenfell was designed according to rigorous fire safety standards. Also, the new front doors for each flat can withstand a fire for up to 30 minutes, which gives plenty of time for the fire brigade to arrive.