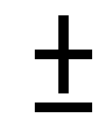
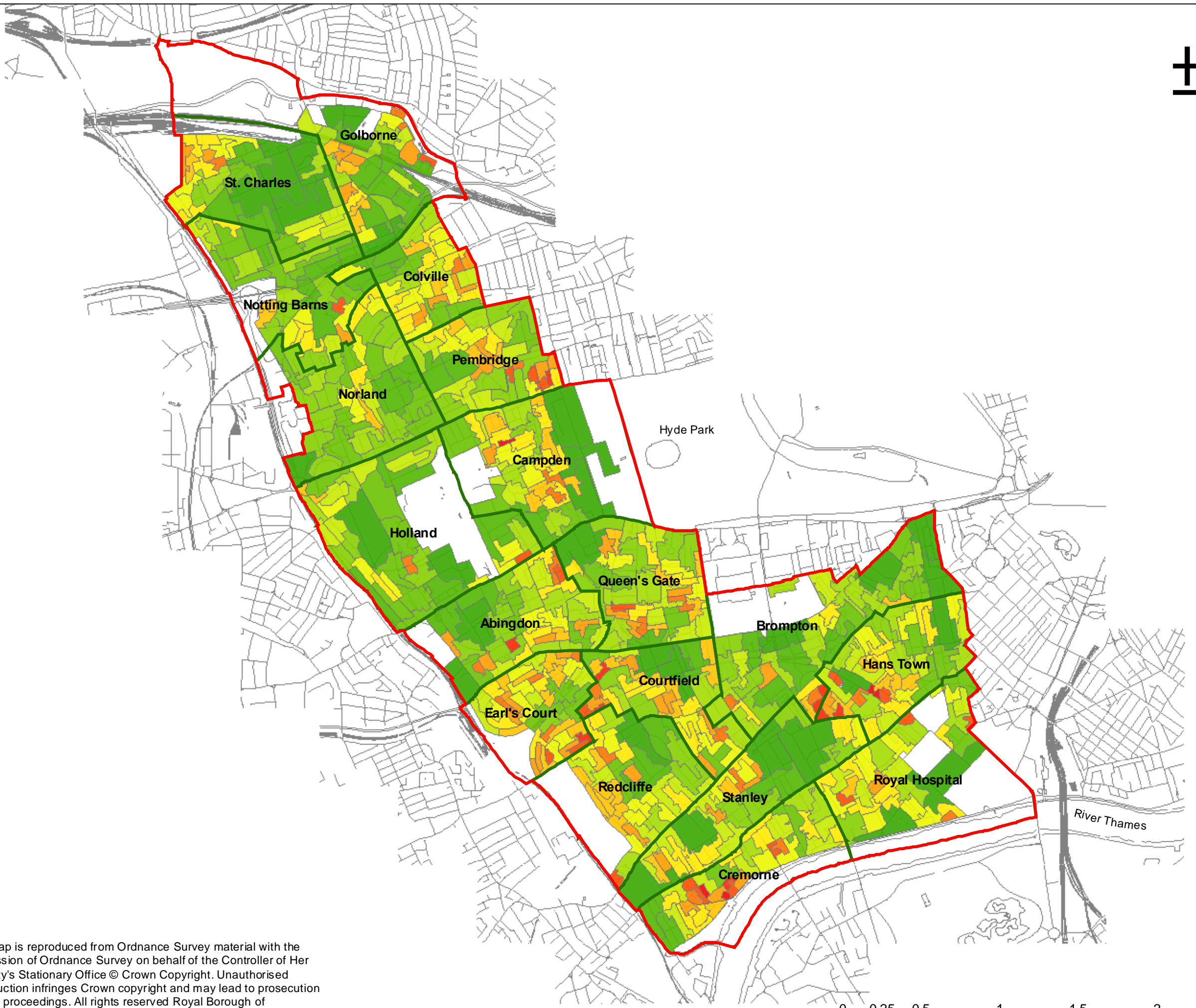


STRATEGIC ENVIRONMENTAL ASSESSMENT (SEA) / SUSTAINABILITY APPRAISAL

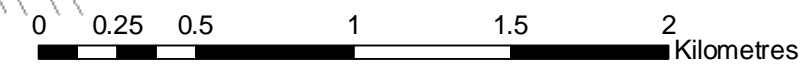


- Borough Boundary
- Wards
- Room Density Per Hectare**
- 66.49 - 153.28
- 153.29 - 206.22
- 206.23 - 244.47
- 244.48 - 288.25
- 288.26 - 331.46
- 331.47 - 378.80
- 378.81 - 430.87
- 430.88 - 494.84
- 494.85 - 574.69
- 574.70 - 683.13
- 683.14 - 820.04
- 820.05 - 1003.13
- 1003.14 - 1540.44
- 1540.45 - 2693.93

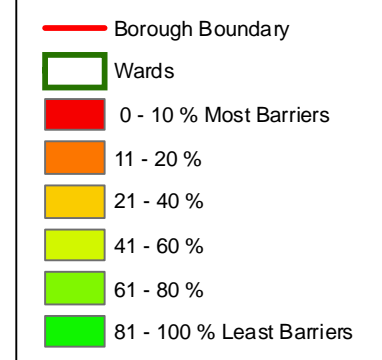
Source:RBKC

Figure Obj 13.1
Housing Density

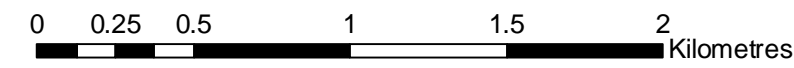
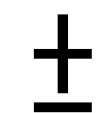
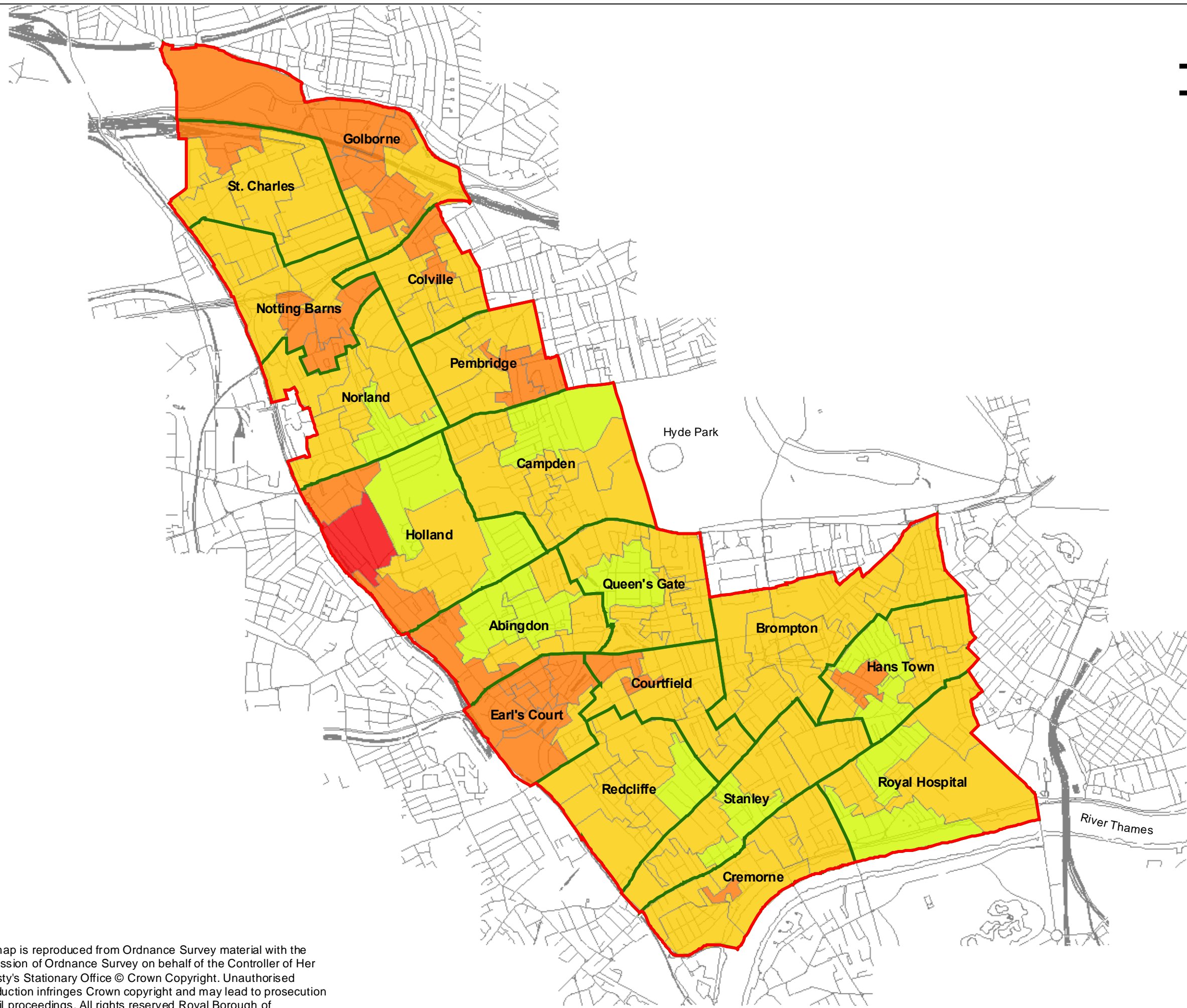
This map is reproduced from Ordnance Survey material with the permission of Ordnance Survey on behalf of the Controller of Her Majesty's Stationary Office © Crown Copyright. Unauthorised reproduction infringes Crown copyright and may lead to prosecution or civil proceedings. All rights reserved Royal Borough of Kensington and Chelsea Licence number 100021668 (2005).



STRATEGIC ENVIRONMENTAL ASSESSMENT (SEA) / SUSTAINABILITY APPRAISAL



% represents the rank within all Super Output Areas (SOAs) nationally where 1 is the most deprived and 32,480 is the least deprived.



This map is reproduced from Ordnance Survey material with the permission of Ordnance Survey on behalf of the Controller of Her Majesty's Stationary Office © Crown Copyright. Unauthorised reproduction infringes Crown copyright and may lead to prosecution or civil proceedings. All rights reserved Royal Borough of Kensington and Chelsea Licence number 100021668 (2005).

Source: Office of the Deputy Prime Minister (ODPM) Indices of Deprivation 2004

Figure Obj 13.2
Indices of Deprivation - Barriers to Housing & Services

