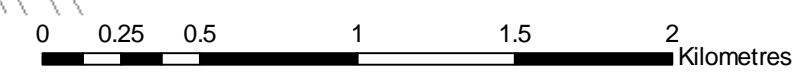
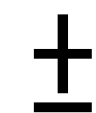
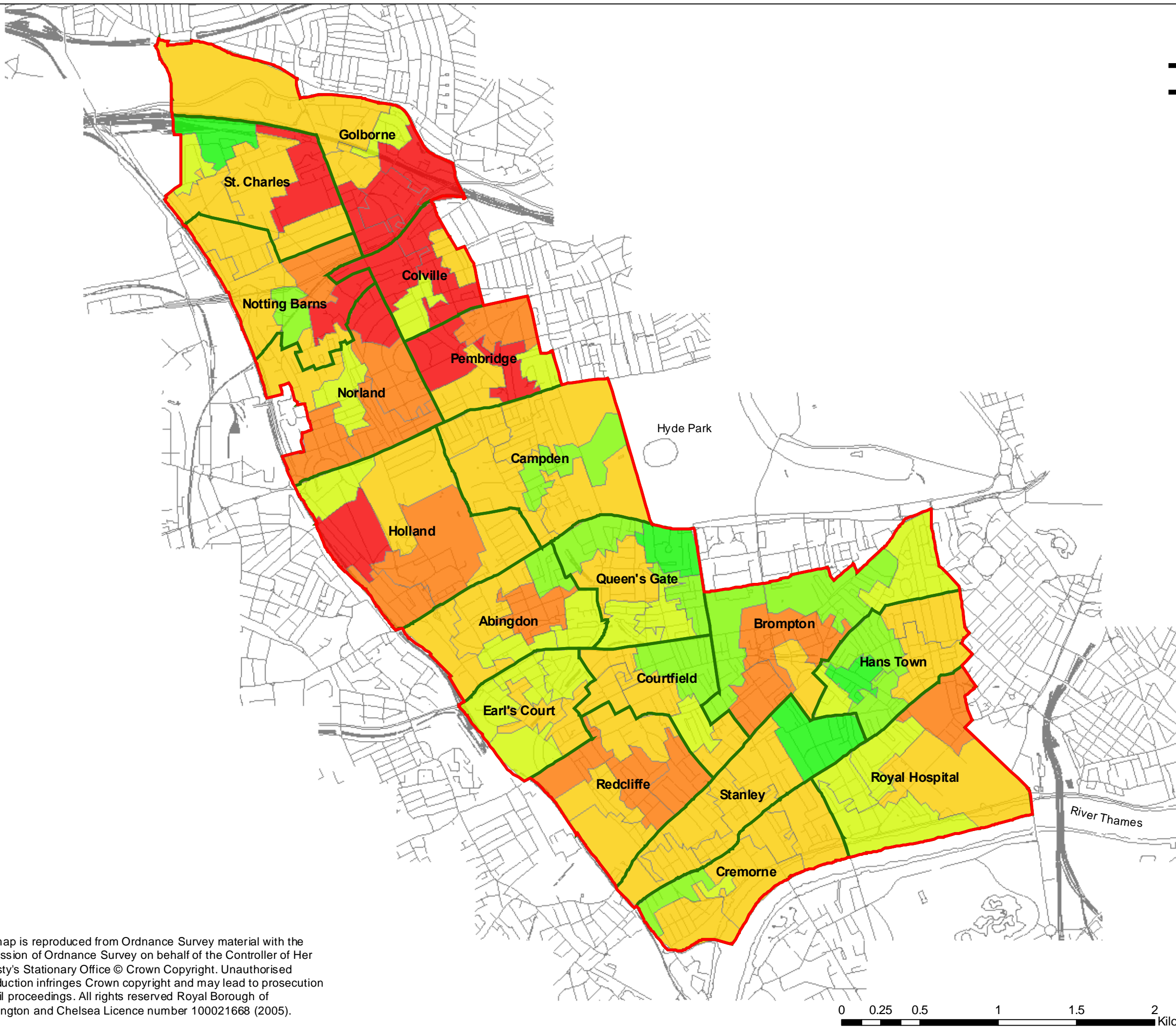


STRATEGIC ENVIRONMENTAL ASSESSMENT (SEA) / SUSTAINABILITY APPRAISAL

- Borough Boundary
- Wards
- 0 - 10% Most Crime
- 11 - 20%
- 21 - 40%
- 41 - 60%
- 61 - 80%
- 81 - 100% Least Crime

% represents the rank within all Super Output Areas (SOAs) nationally where 1 is the most deprived and 32,480 is the least deprived.

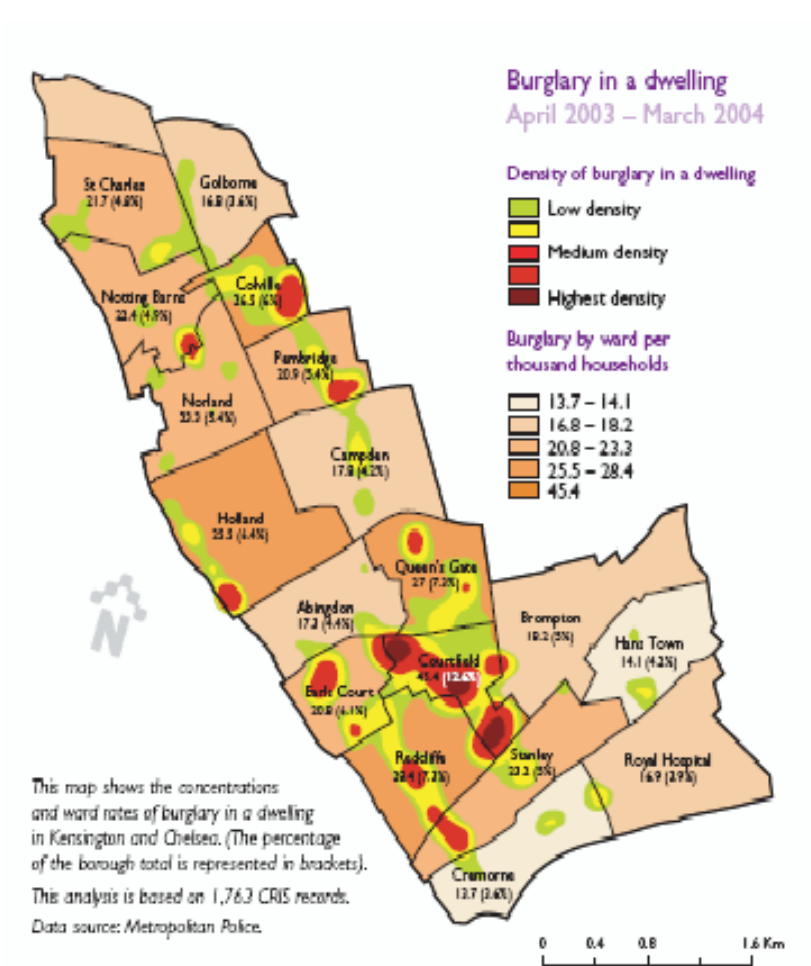
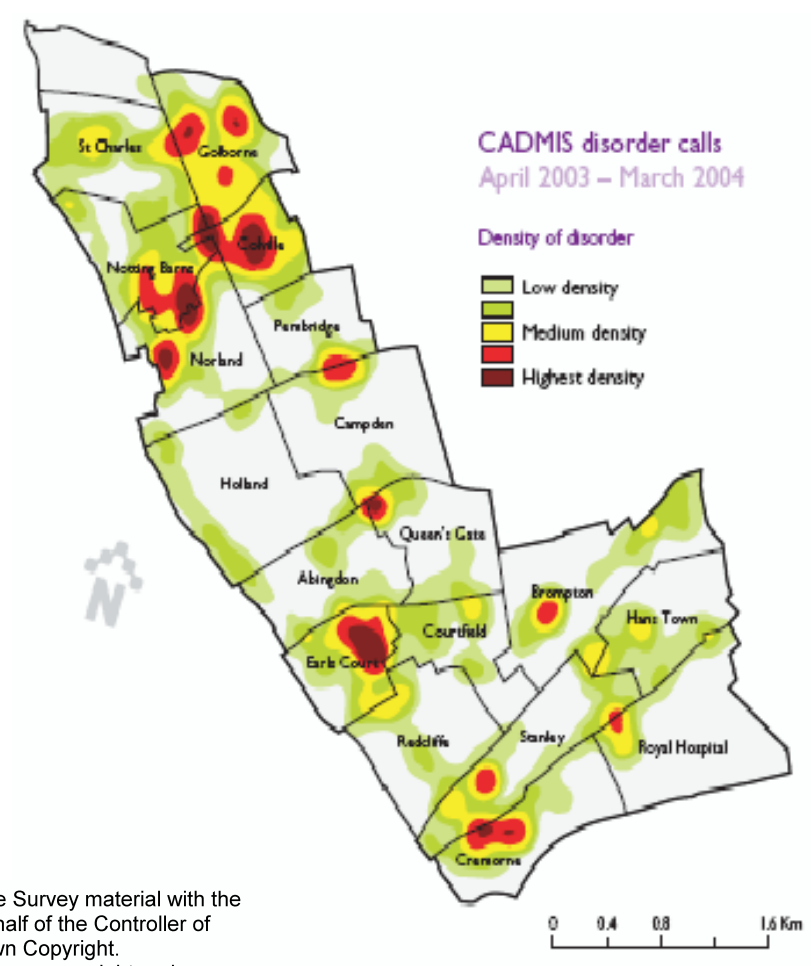
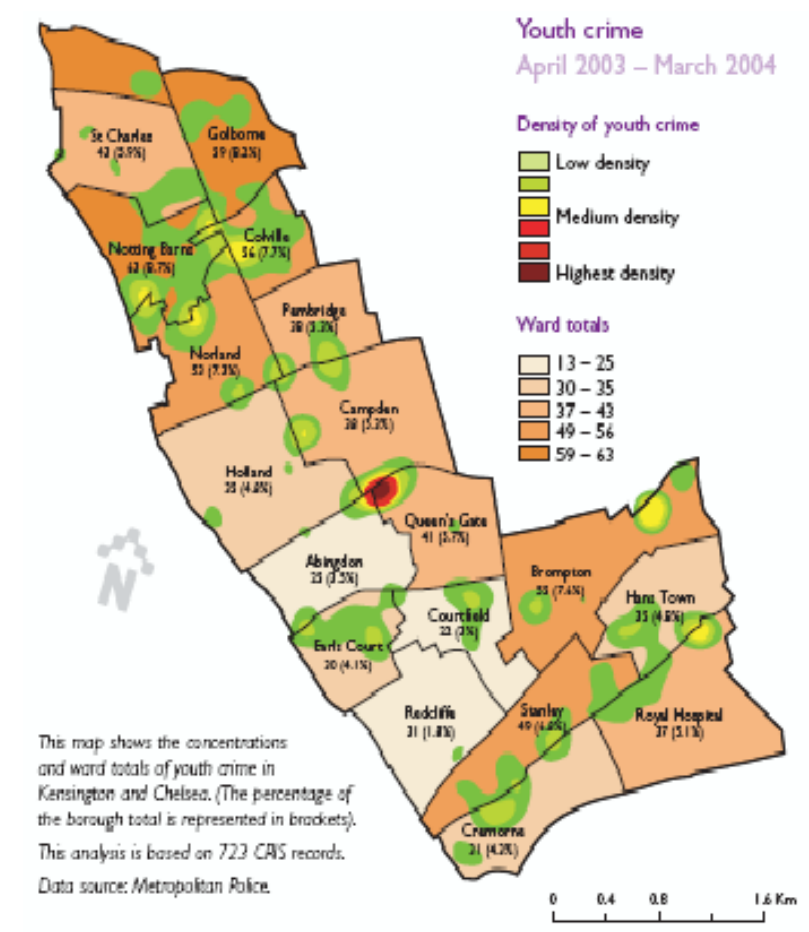
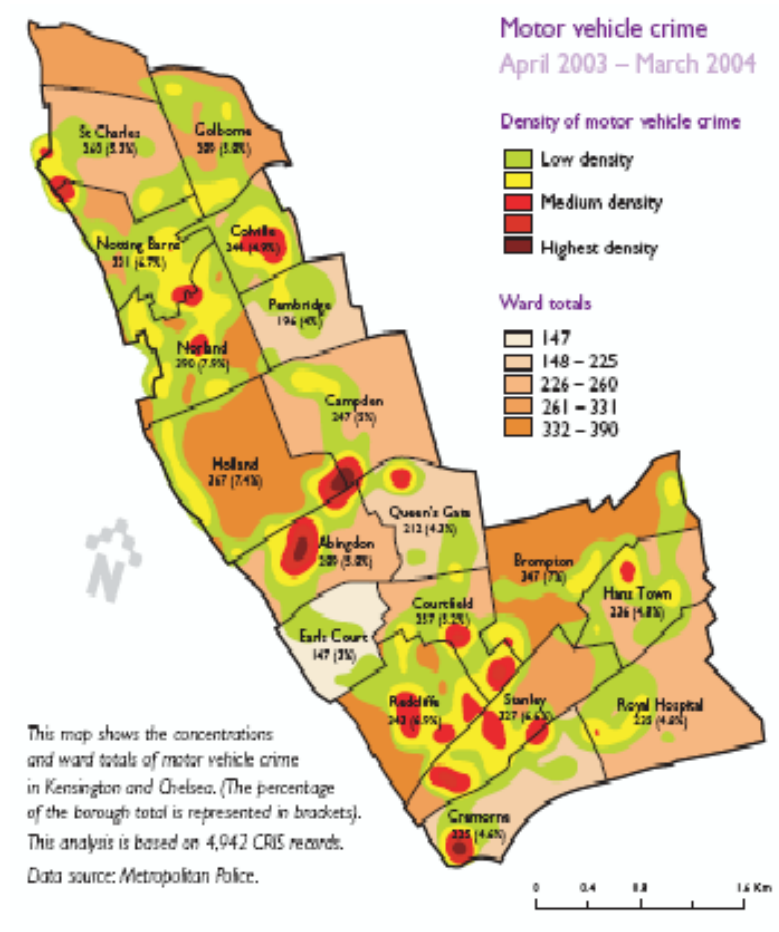
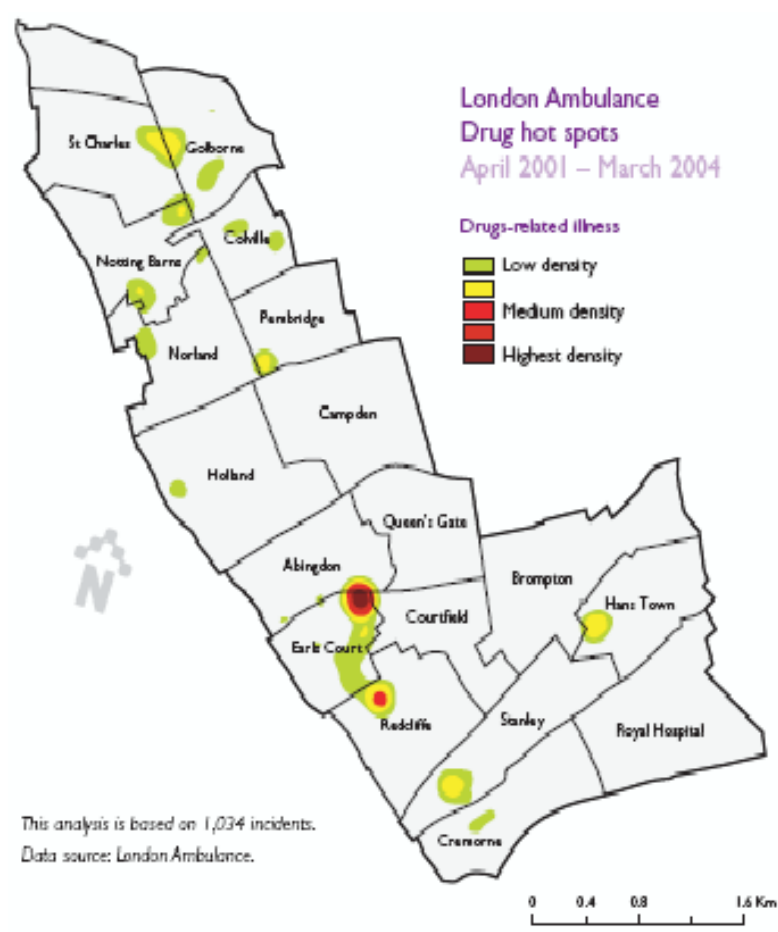


This map is reproduced from Ordnance Survey material with the permission of Ordnance Survey on behalf of the Controller of Her Majesty's Stationary Office © Crown Copyright. Unauthorised reproduction infringes Crown copyright and may lead to prosecution or civil proceedings. All rights reserved Royal Borough of Kensington and Chelsea Licence number 100021668 (2005).

Source: Office of the Deputy Prime Minister (ODPM) Indices of Deprivation 2004

Figure Obj 2.1 Indices of Deprivation - Crime





This map is reproduced from Ordnance Survey material with the permission of Ordnance Survey on behalf of the Controller of Her Majesty's Stationary Office © Crown Copyright. Unauthorised reproduction infringes Crown copyright and may lead to prosecution or civil proceedings. All rights reserved Royal Borough of Kensington and Chelsea Licence number 100021668 (2005).

Source: RBKC

Figure Obj 2.2  
Crime in RBKC