

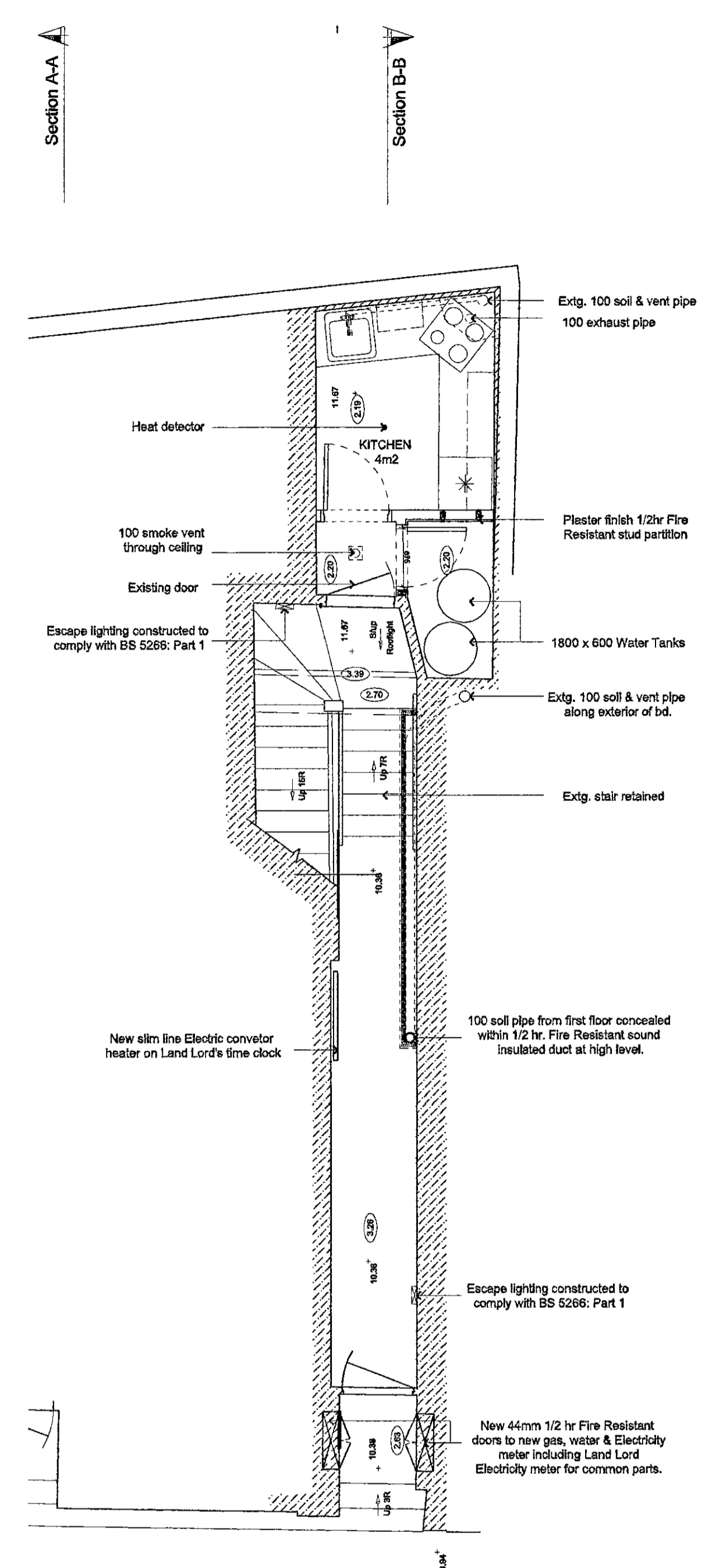
APPROVED DRAWINGS

Please Index As

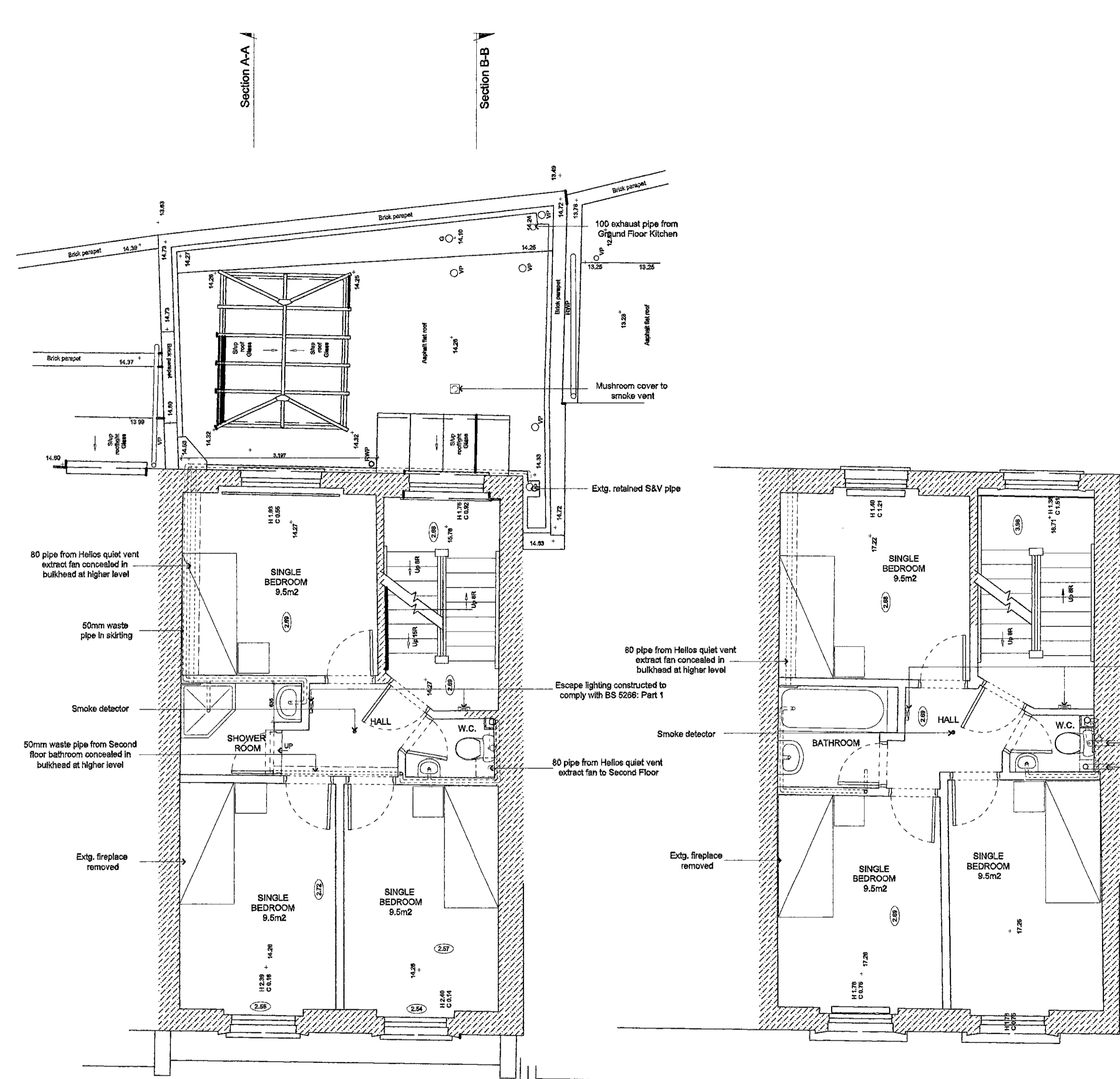
File Number

APPROVED DRAWINGS

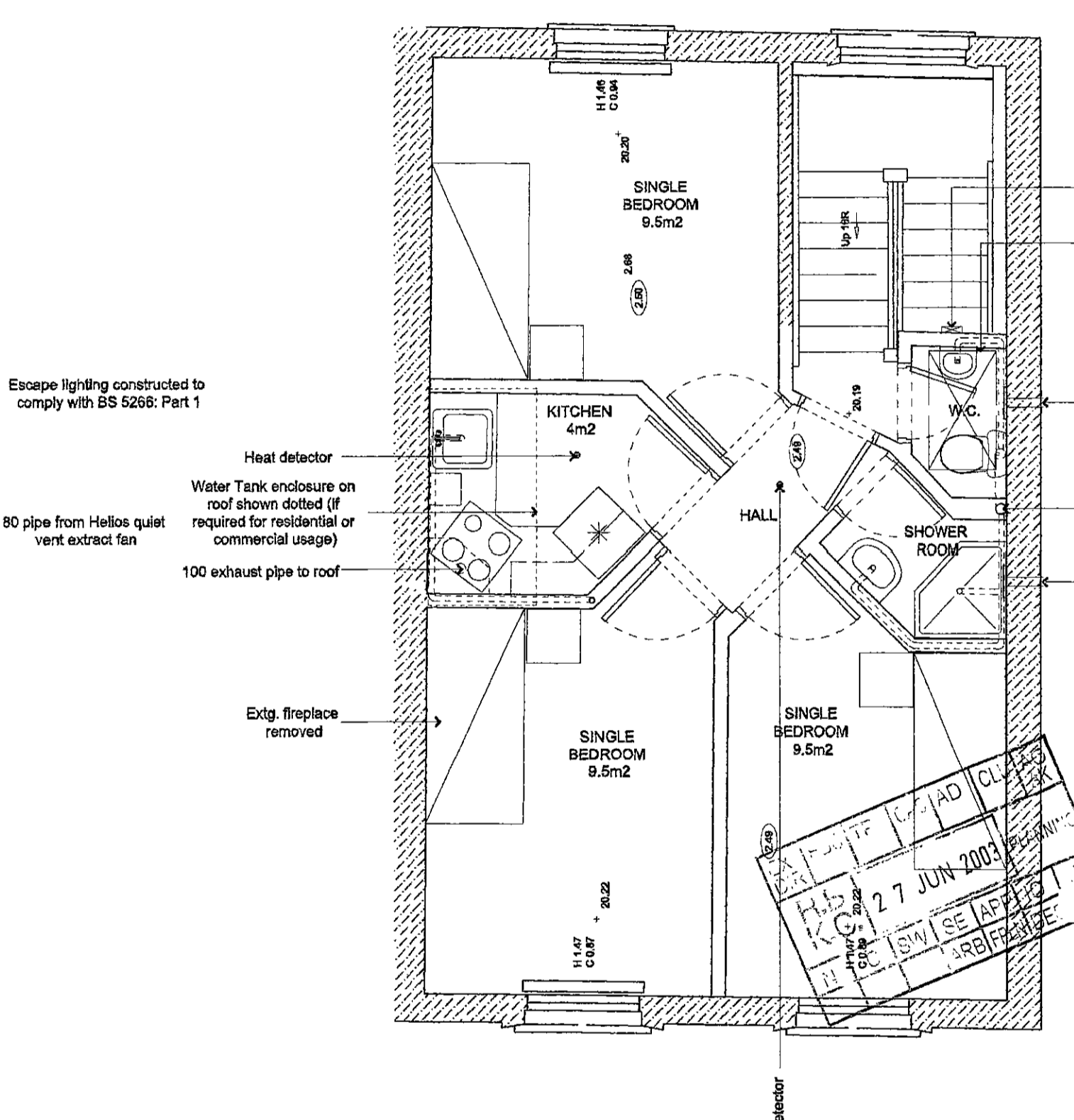
Part	1	Part	11
Part	2	Part	12
Part	3	Part	13
Part	4	Part	14
Part	5	Part	15
Part	6	Part	16
Part	7	Part	17
Part	8	Part	18
Part	9	Part	19
Part	10	Part	20



GROUND FLOOR PLAN



FIRST FLOOR PLAN



Escape lighting constructed to comply with BS 5268: Part 1
 New opening roof light allowing access for maintenance to main roof areas. (The designation of the covering to be a minimum of either AA, AB or AC in accordance with Table 7, 84 of Approved Document B)

80 pipe from Helios quiet vent extract fan
 100 soil & vent pipe to roof
 80 pipe from Helios quiet vent extract fan

peter tigg
partnership ltd.
architects • planners • designers

PP031386
 WALMER COURTYARD
 228 WALMER ROAD
 HOLLAND PARK
 LONDON W11 4EY
 TEL: 0207 - 221 8888
 FAX: 0207 - 228 8771

site:
 123 Notting Hill Gate,
 London, W11

fig no:
 123 NHG 07 A

title:
 Single Bedroom Bedset Plans

date:
 2 June 2009

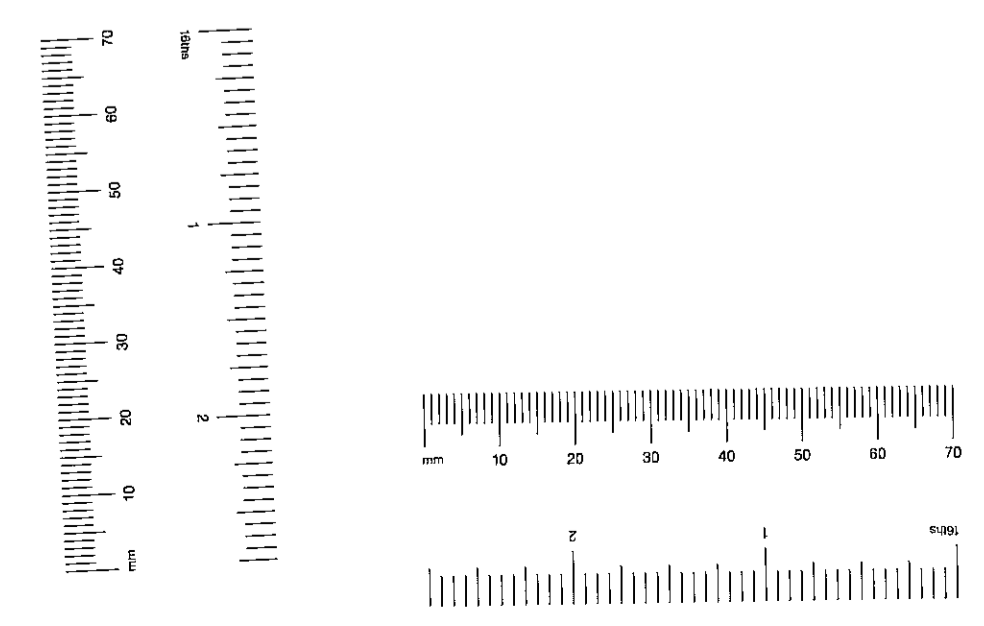
scale:
 1:50

do not scale this drawing:
 all dimensions to be checked on site

Rev.	Date
A	20.06.03
B	-
C	-
D	-
E	-

last revision - note:
 - Drainage added.

Copyright in this drawing remains with architect Peter Tigg Partnership and no express or implied licence is granted by way of this drawing or otherwise to reproduce the drawing or the design contained in it.



ABOVE GROUND DRAINAGE

- Generally all above ground internal pipework to be in UPVC except for soil pipes which are to be in Cast Iron.
- New SVP's to be 100mm diameter terminating with a suitable bird cage arrangement 900mm above roof line.
- Adequate rodding/access points are to be provided to allow reasonable access to maintenance for the system.
- Internal stub stacks are to be 100mm diameter and fitted with a suitable anti-siphon pipe.
- Outlets from sinks, showers and baths to be 40mm diameter, trapped with a 75mm seal and laid to a minimum fall of 1:40.
- Outlets from WHB to be 32mm diameter trapped with a 75mm deep seal and laid to a minimum fall of 1:40.
- Outlets from WC's to be 100mm diameter and laid to a minimum fall of 1:40.
- Branch pipes serving more than one appliance (excluding WC's and where otherwise indicated) to be 50mm diameter and laid to a minimum fall of 1:40.
- All new internal service ducts should be packed with adequate and suitable sound insulating materials.

Note for unventilated stub stack - need rodding point.

Note Drainage

Provide adequate drainage for both soil and waste water, and rainwater from the building as detailed in the drawings and in compliance with parts H1 and H3 of the Building Regulations.

FIRE BOXING

- All recessed light fittings and ducts in the ceiling to have surrounding fire boxing where built into compartment floors and to achieve 1/2hr. fire resistance.

NEW INTERNAL DOORS

All new doors should give a half hour fire rating. All new doors should be self-closing.

BACKGROUND VENTILATION

- All habitable rooms to be provided with window mounted hit and miss trickle ventilators to provide a minimum of 8000mm² sw background ventilation (using mignon type flush fitting in top or bottom rail of window).
- Kitchen areas to be provided with door or window mounted hit and miss trickle ventilators to provide a minimum of 4000mm² background ventilation.

SMOKE DETECTION UNITS

- Combined smoke detectors/alarm sounders to be located in the hall/staircase areas at each floor level.
- Units are to be interconnected and wired to a separately fused electrical circuit.
- Installation to conform with the current IEE Regulations and in compliance with BS 5839 Part 1.
- All to be as recommended by the manufacturer.

NEW WALL AND CEILING LININGS

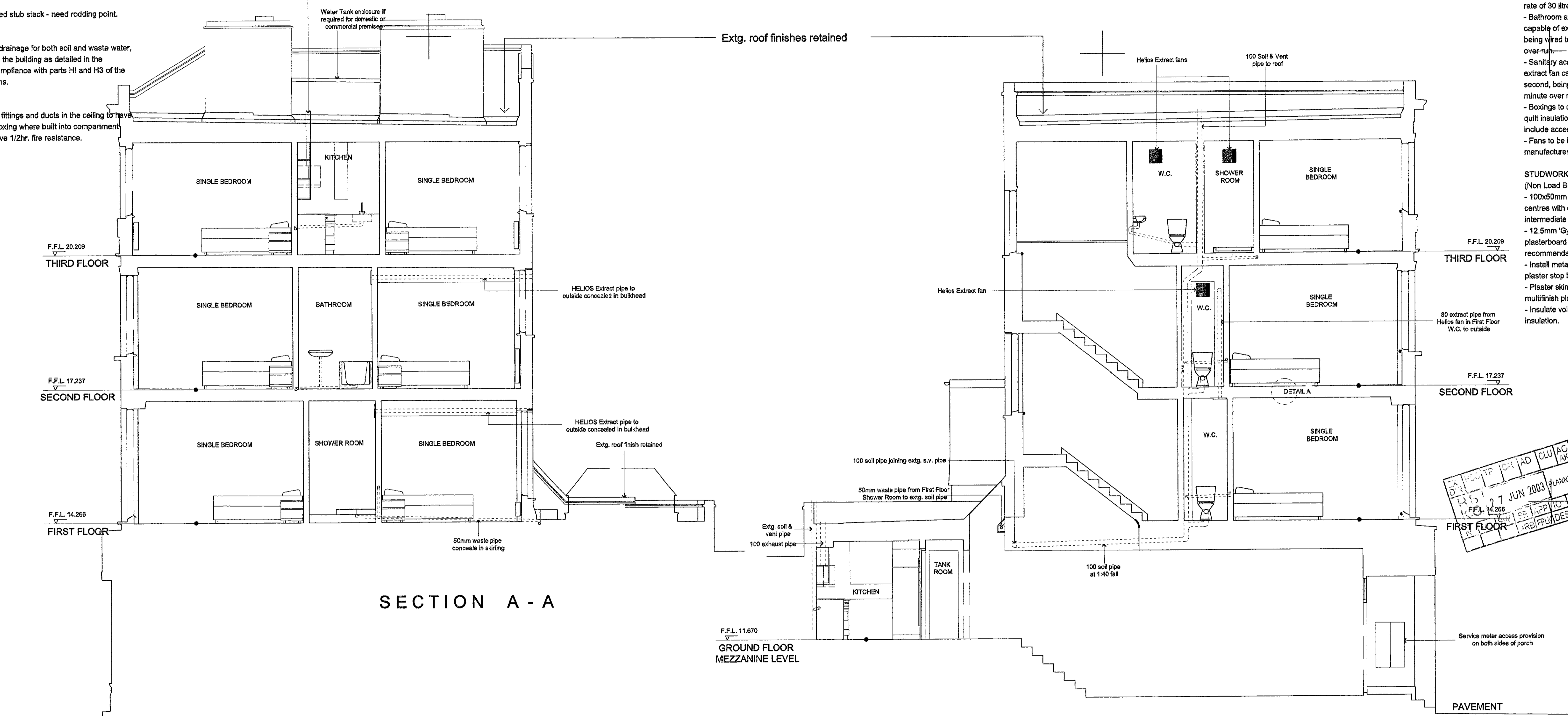
To comply with the requirements of Table 10, Section 7, B2 of Approved Document B.
 - 12.5mm & skim to ceiling and partition.
 - Solid plaster to masonry.

ESCAPE LIGHTING

- Positions as marked on drawings in accordance with the provisions of Table 9, B1 of Approved Document B, and constructed to comply with BS 5266: Part 1.

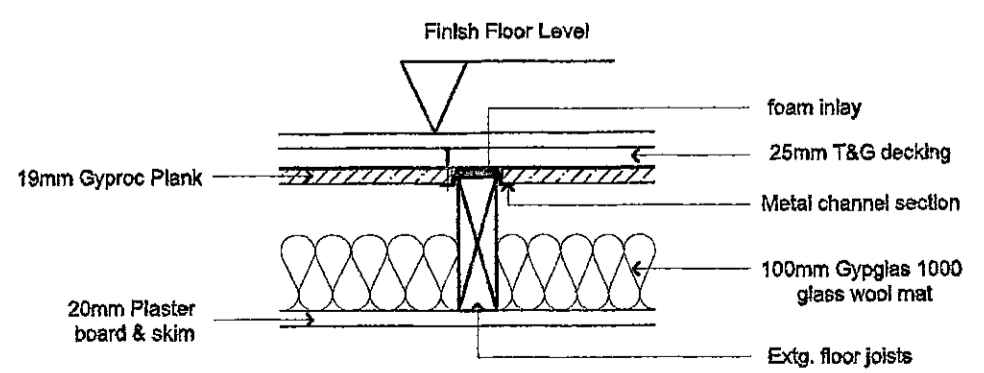
NEW PARTITION FORMING PART OF ENCLOSURE TO COMMUNAL STAIRWAY

- To resist the action of fire for 60 minutes.
 - To comply with the provision of sound insulation in accordance with the provisions set out in Table 1, E1 of Approved Document E.



SECTION A - A

SECTION B - B



DETAIL A - Section through new acoustic insulated upgraded floor construction using British Gypsum S.I. System. (Scale 1:10)

GLAZING TO SCREENS AND DOORS

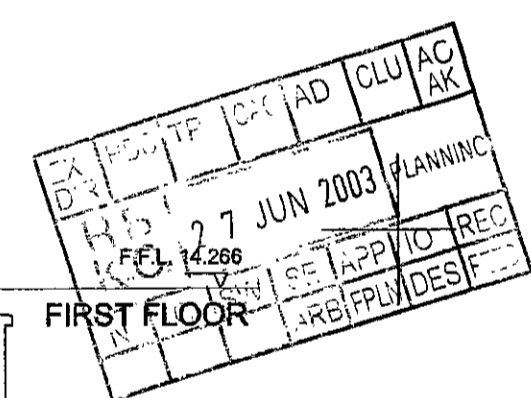
- Any glazing located in critical locations to be glazed using laminated safety glass in accordance with BS 6206 1981, Specification of Impact Performance Requirements for Flat Safety Glass and Safety Plastics for use in buildings as follows:
- Any glazed panel with an area below 800mm above finished floor level.
- Any glazed door or side panel with an area below 1500mm above finished floor level.
- All necessary glazing to be in accordance with part N2 of the Building Regulations.
- Glazed door and glazed screen to hallway at upper ground floor level to be half hour fire rating.

MECHANICAL VENTILATION

- Provide mechanical extract ventilation to bathroom and kitchen areas as detailed on drawings and in compliance with Part F1 of the current building regulations.
- Kitchen areas to have an extract fan located within the cooker hood being capable of extracting at a minimum rate of 30 litres per second.
- Bathroom areas to have a wall mounted extract fan capable of extracting at a rate of 15 litres per second, being wired to the light switch and set with a 15 minute over run.
- Sanitary accommodation to have a wall mounted extract fan capable of extracting at a rate of 6 litres per second, being wired to the light switch and set with a 15 minute over run.
- Boxings to ductwork and fan to be filled with fibreglass quilt insulation to deaden operational sound, and are to include access points at fans and condensation traps.
- Fans to be installed strictly in accordance with manufacturers written instructions.

STUDWORK PARTITION CONSTRUCTION

- (Non Load Bearing)
- 100x50mm or 75x50mm treated SW studs at 400mm centres with continuous head and sill plates and intermediate noggings where required.
- 12.5mm 'Gyproc wall board' grey paper faced plasterboard facing nail, fixed in line with manufacturers recommendations.
- Install metal angle beads on all external corners and plaster stop beads at abutments with other elements.
- Plaster skim coat finish 3mm British Gypsum multi-finish plaster.
- Insulate void in partition with fibreglass quilt insulation.



peter tigg
 partnership ltd.
 architects • planners • designers

PP031386
 WALKER COURTYARD
 228 WALKER ROAD
 HOLLAND PARK
 LONDON W11 4EY
 TEL: 0207 - 221 5568
 FAX: 0207 - 229 8771

site:
123 Notting Hill Gate, London, W11

org no:
123 NHG 08

site:
 Single Bedroom Bedset Sections AA & BB.

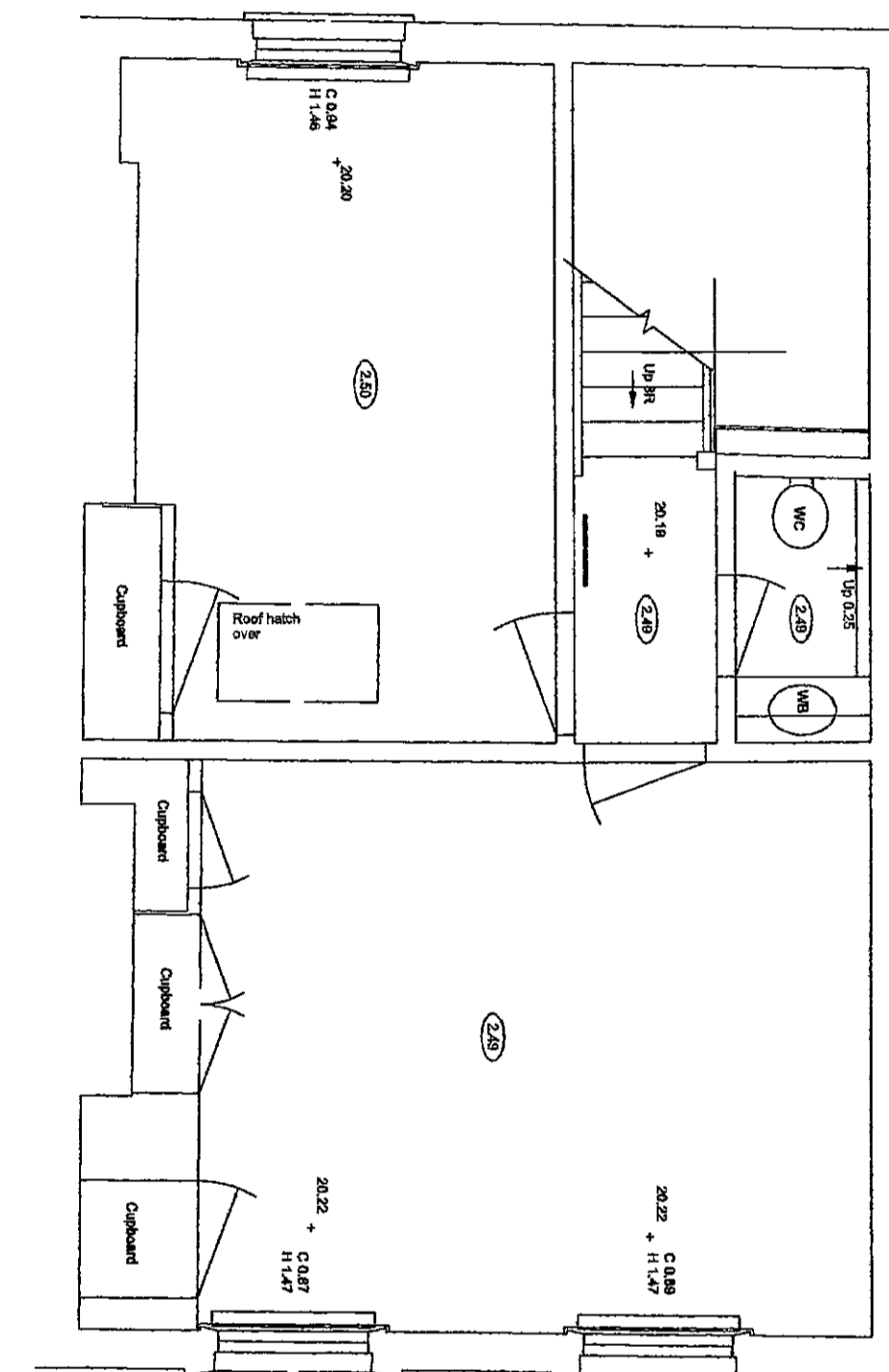
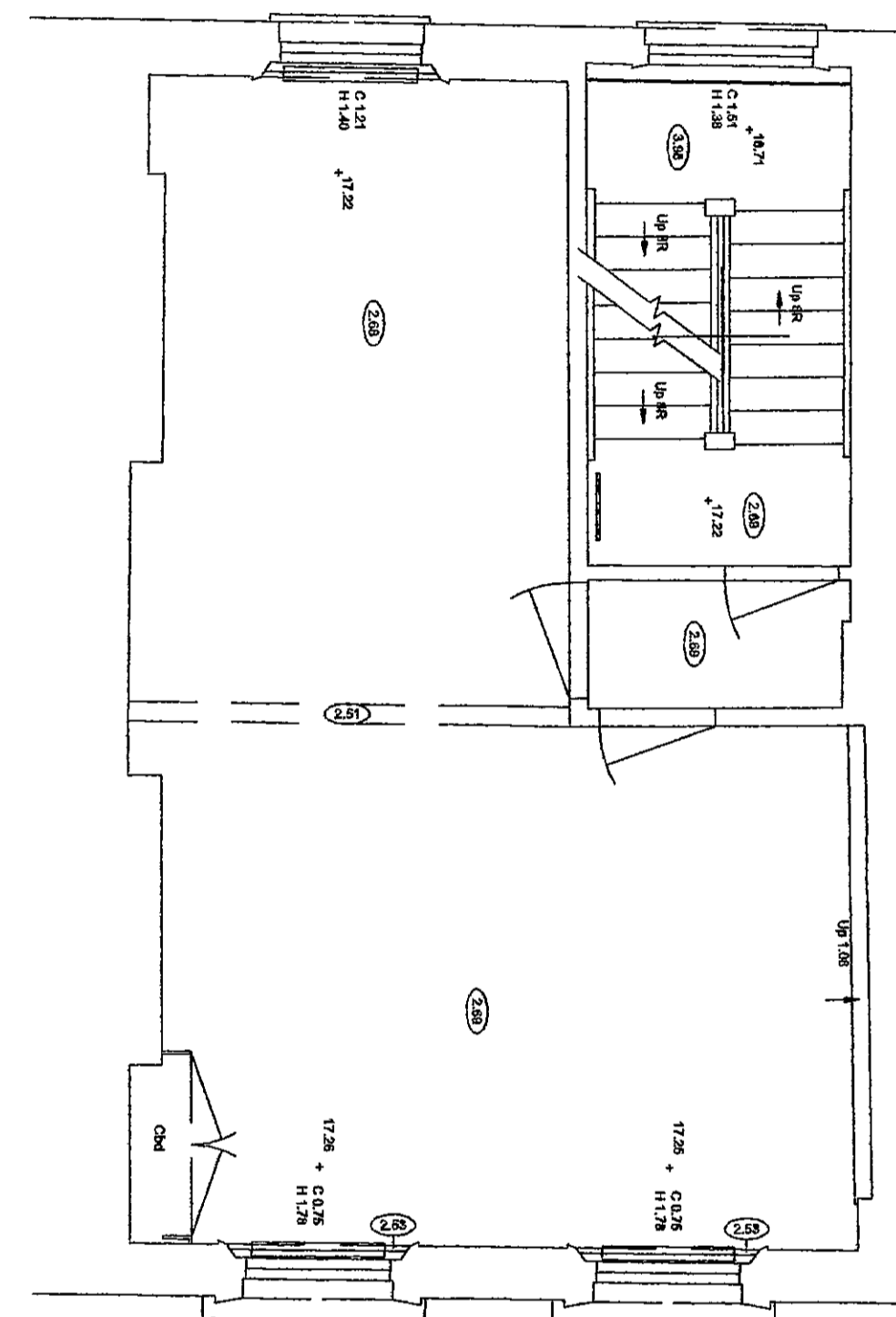
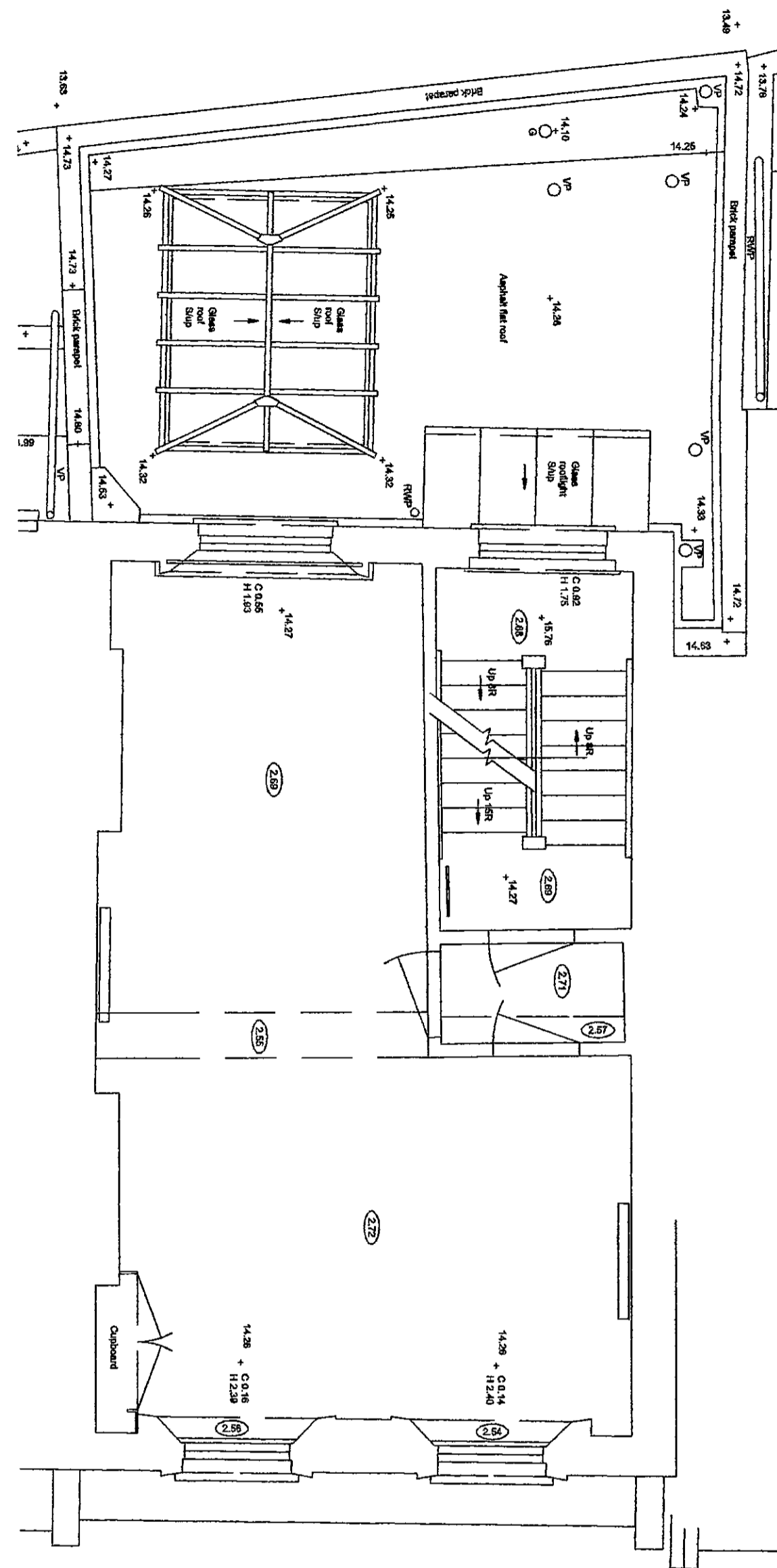
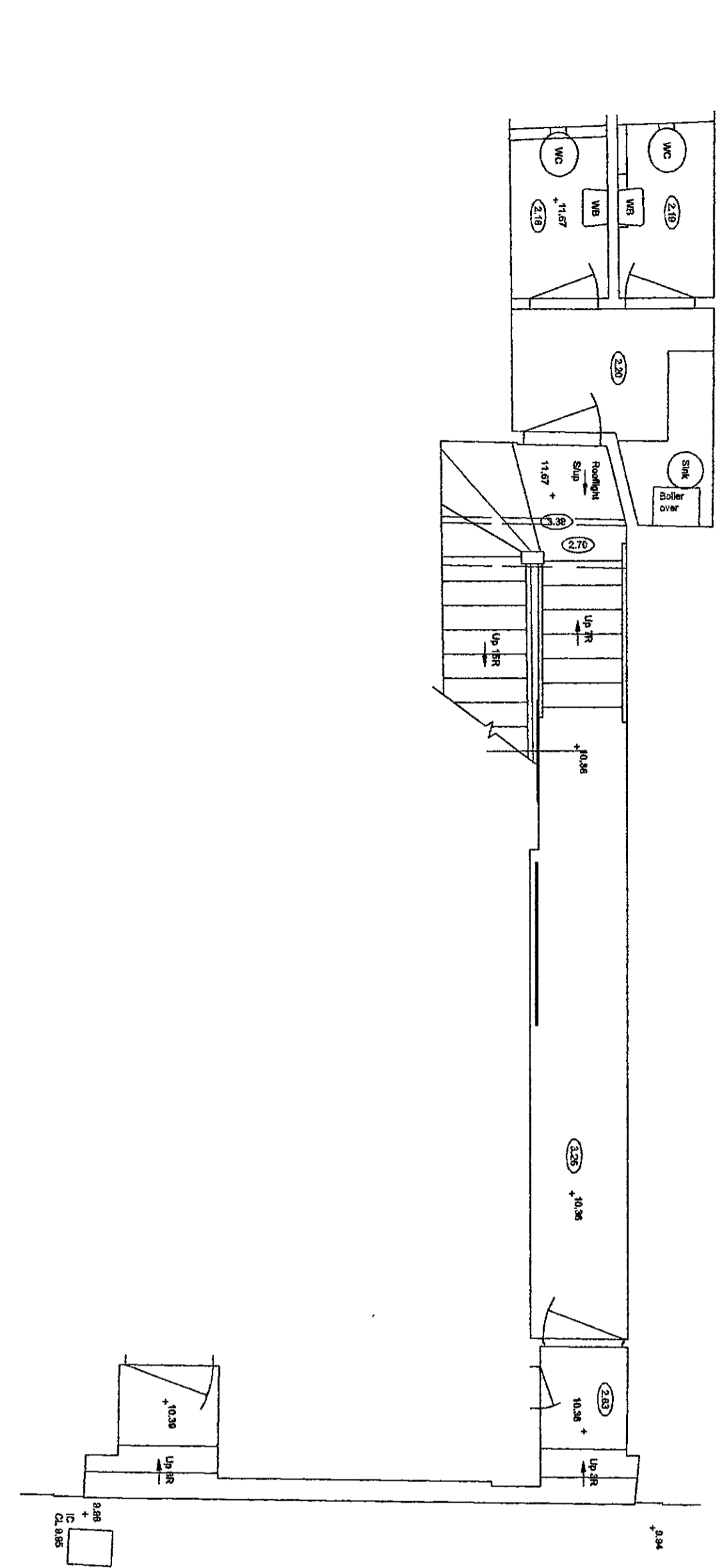
date:
 20 June 2003

scale:
 1:50

do not scale this drawing:
 all dimensions to be checked on site

Rev.	Date
A	-
B	-
C	-
D	-
E	-

list revision - note:
 -



PP031335

B.K. H.C. T.P. C.A.C. J.A.G. A.G.
 R.B. K.C. 27 JUN 2003
 N.C. S.M. J.P. J.P. J.P. J.P.
 REC
 SPEED

peter tigg
partnership ltd.
 architects • planners • designers

PP031386

WALMER COURTYARD
 225 WALMER ROAD
 HOLLAND PARK
 LONDON W11 4EY
 TEL: 0207 721 5588
 FAX: 0207 729 8774

site:
123 Notting Hill Gate,
London, W11

dng no:
123 NHG 05

title:
Survey Plans

date:
11 March 2003

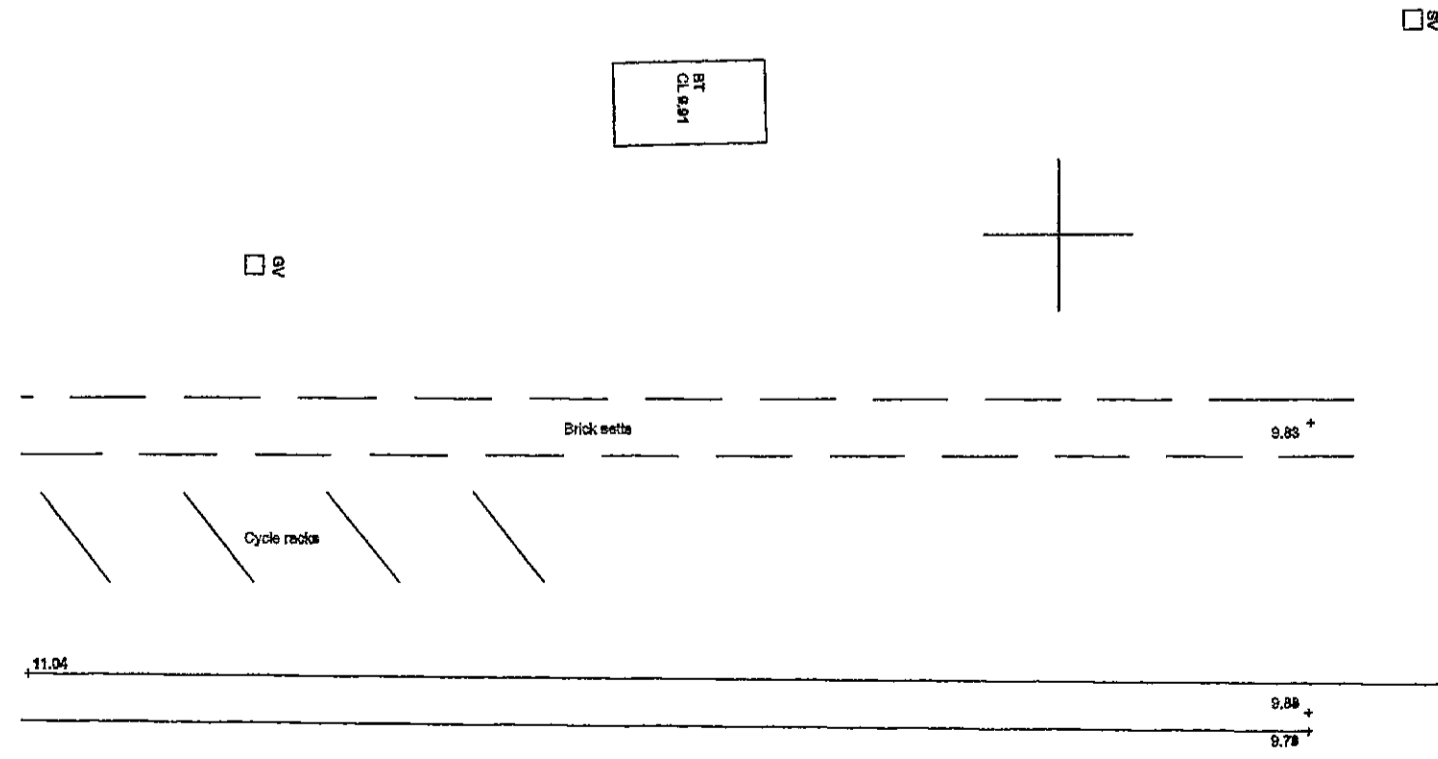
scale:
1:50

do not scale this drawing:
 all dimensions to be checked on site

Rev.	Date
A	-
B	-
C	-
D	-
E	-

last revision - note:

Copyright in this drawing remains with architects.
 Peter Tigg Partnership and no express or implied license
 is granted by way of this drawing or otherwise to reproduce
 the drawing or the design contained in it.



NOTTING HILL GATE

