

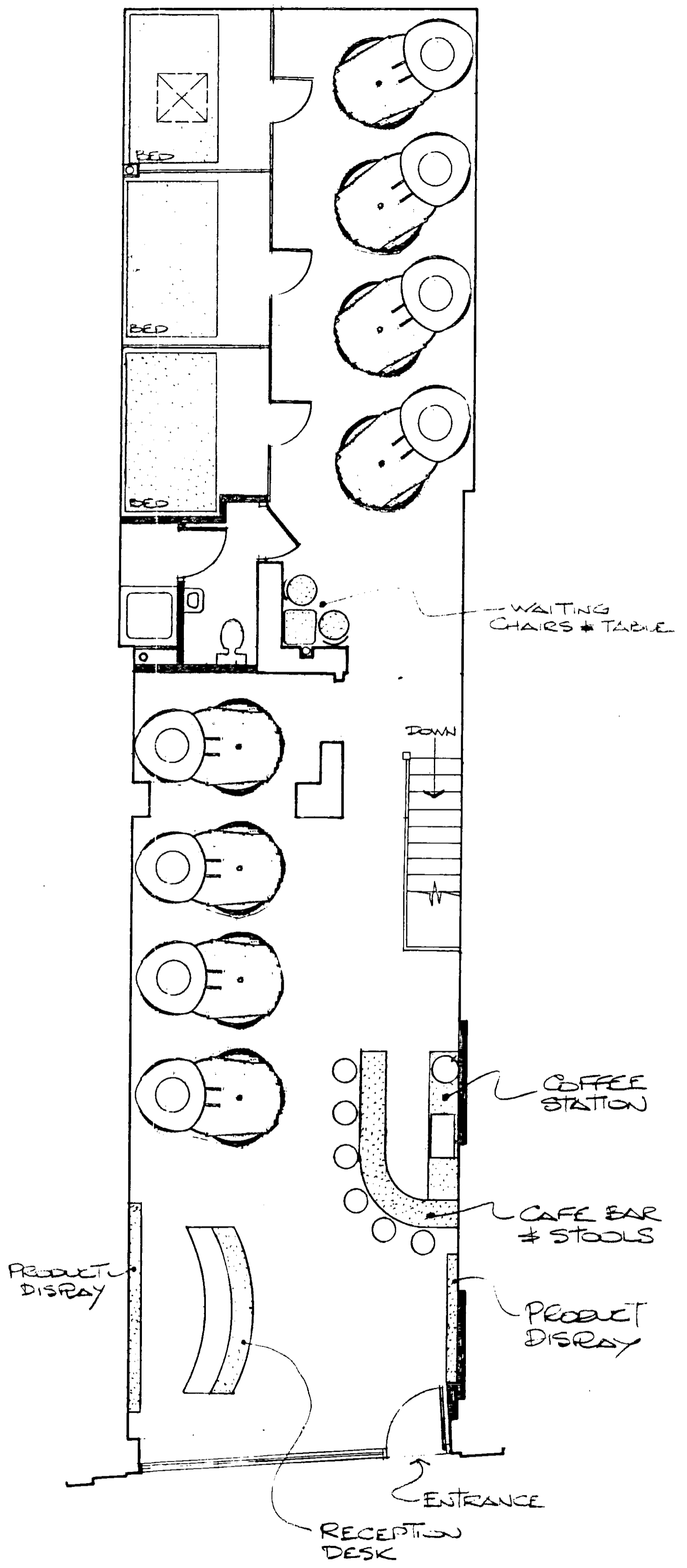
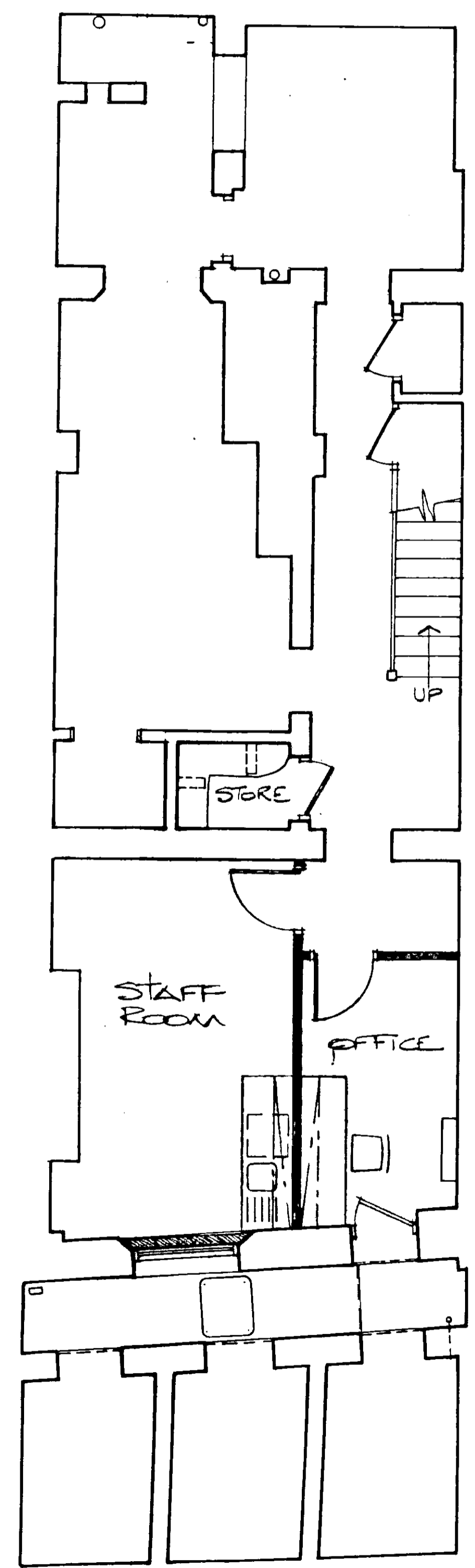
# APPROVED DRAWINGS

Please Index As

File Number

## APPROVED DRAWINGS

Part	1	Part	11
Part	2	Part	12
Part	3	Part	13
Part	4	Part	14
Part	5	Part	15
Part	6	Part	16
Part	7	Part	17
<u>Part</u>	<u>8</u>	<u>Part</u>	<u>18</u>
Part	9	Part	19
Part	10	Part	20



22 x 5'

PP031462

EX	HDC	TP	CA	AD	GLU	AO
DIR					AR	
R.B.						
K.C.	14	JUL	2003	PLANNING		
N	C	SW	SE	APP	IO	REC
				ARB	FPLN	DES
						FEES

Y REVISED TO MEET JIS USE JUNE 01

Rev.	Amendment	Date
------	-----------	------



Straight Impact Limited  
The Old Station Master's House,  
Cobham, Surrey KT11 3BW  
Tel: 01932 867777  
Fax: 01932 860620

**Project**  
THE TANNING SHOP  
NOTTINGHILL GATE

**Client**  
BODYCARE INTERNATIONAL

**Title**  
GENERAL  
ARRANGEMENT

**Date**    **Scale**    **Drawn**  
JUNE 01 1:50 Jm

**Drawing No.**    **Rev.**

418/01 Y

12 Notting Hill Gate  
LONDON W11

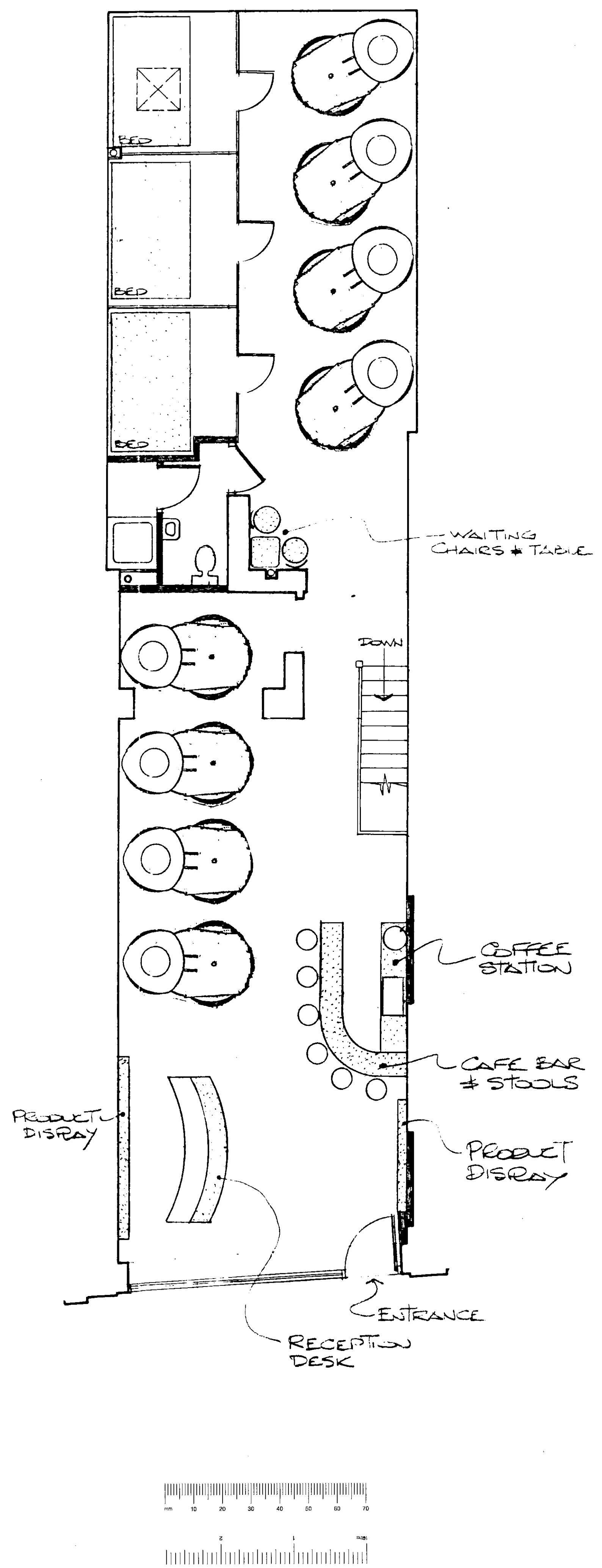
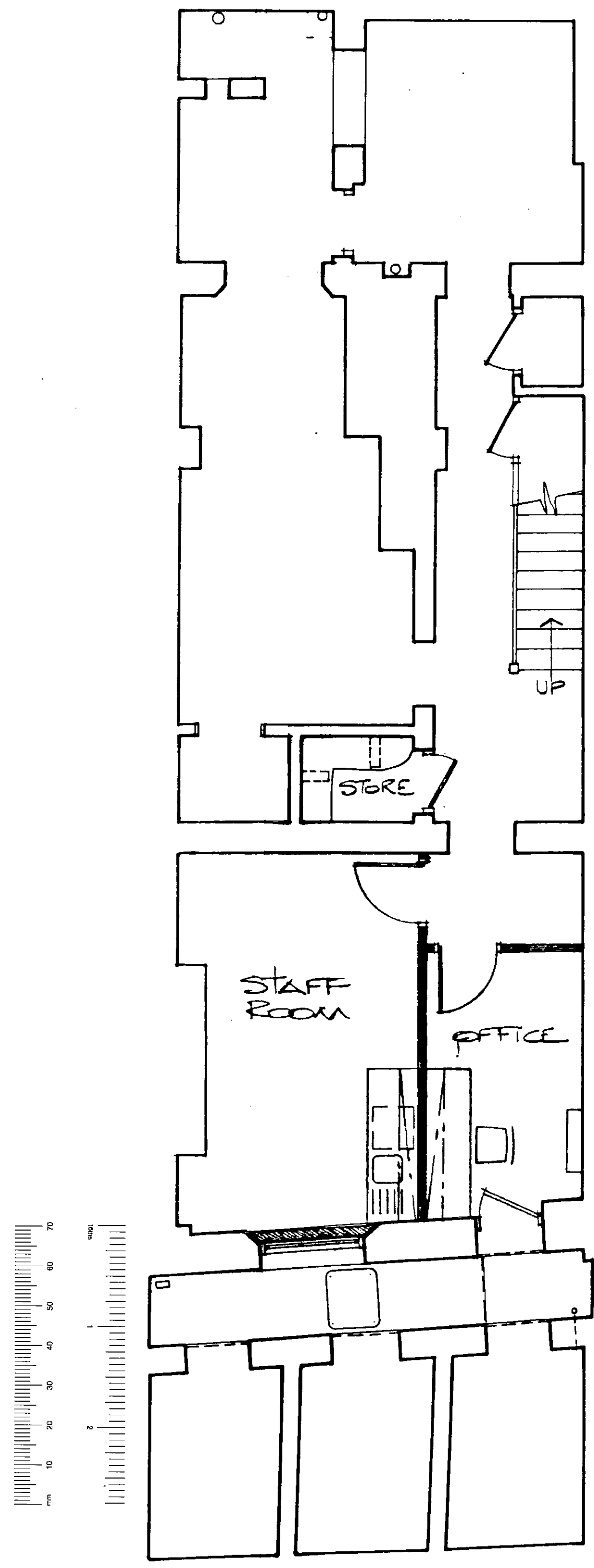
PP031462



Ordnance Survey

© Crown copyright 2003. All rights reserved. Licence Number 100020449. Survey Scale - 1:1250 Plotted Scale - 1:1250

EX	HDC	TP	CAC	AD	CLU	AO
DIR						AK
R.B.	03 JUL 2003				PLANNING	
K.C.						
N	C	SW	SE	APP	IO	REC
				ARB	FPLN	DES FEES



22 x 5

PP031462

EX DIR	HDC	TP	CAC	AD	CLU	AD	AR
R.B.	K.C.	14 JUL 2003	PLANNING				
N	C	SW	SE	APP	IO	REC	
			ARB	PLN	DES	FEE	

DELEGATED APPROVAL  
2 JAN 2004

Y Revised to meet JWS's JUNE 01

Rev.	Amendment	Date
------	-----------	------



Straight Impact Limited  
The Old Station Master's House,  
Cobham, Surrey KT11 3BW  
Tel: 01932 867777  
Fax: 01932 860620

Project  
**THE TANNING SHOP  
NOTTINGHILL GATE**

Client  
**BODYCARE INTERNATIONAL**

Title  
**GENERAL  
ARRANGEMENT**

Date  
JUNE 01 1:50

Scale  
1:50

Drawn  
JWS

Drawing No.  
418/01

Rev.  
Y