

APPROVED DRAWINGS


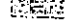


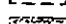
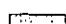

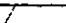
Please Index As

File Number

APPROVED DRAWINGS

Part	1	Part	11
Part	2	Part	12
Part	3	Part	13
Part	4	Part	14
Part	5	Part	15
Part	6	Part	16
Part	7	Part	17
Part	8	Part	18
Part	9	Part	19
Part	10	Part	20

HOUSE NAMES	TYPE					TOTAL
	F	F1	F2	F3	F4	
	Bedsk	Bed'm	2 Bed'm	3 Bed'm	4 Bed'm	
ALDBURY	10	30	10			50
BEDMOND	9	29	10	1		49
CHIPPERFIELD	10	30				40
DELMEREND			20			20
ELBOURN		1	19			20
FLAMSTEAD		3	6	4		13
GADEBRIDGE		5	15			20
HAMMERFIELD		9	9	1		19
ICKNIELD		9	9	1		19
JENNINGSBURY		17	8	X 1		26
KINGSMILL		35	11	X 1		47
LEVERSTOCK		34	1	2		37
MAYLANDS		29		13		42
NETTLEDEN		10	11	9	2	32
OATWELL		16	10	2		28
E. MANAGERS				1		1
TOTAL	29	257	139	36	2	463

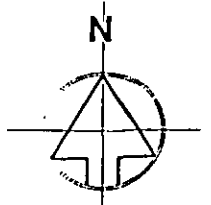
-  STORE SHEDS
-  DUSTBIN ENCLOSURES
-  ESTATE MANAGERS FLAT & OFFICE
-  TRANSFORMER SUBSTATION
-  PARKING SPACES
-  SHOPS
-  GRASS (Maintained by the Trust)
-  SHRUBS/BEDS etc. (Maintained by the Trust)

CHELSEA ESTATE LONDON



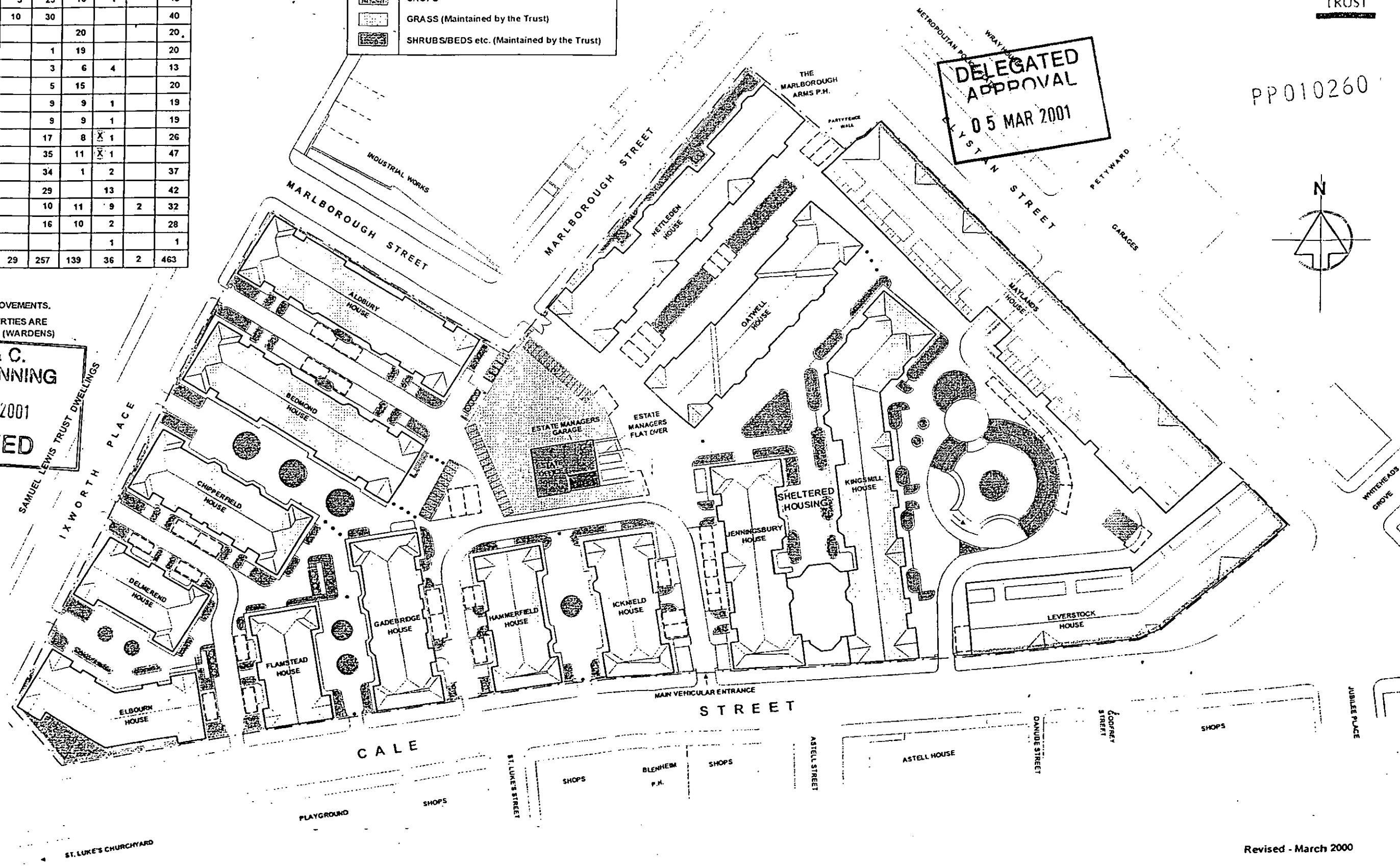
DELEGATED APPROVAL
05 MAR 2001

PP010260

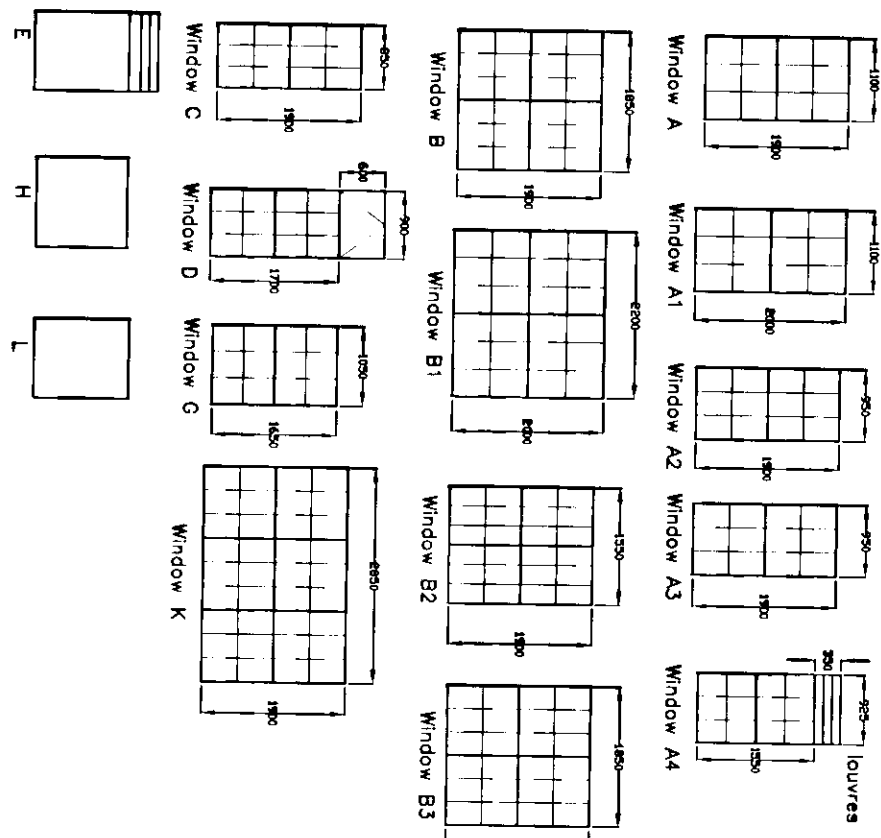


○ INTERIM IMPROVEMENTS.
⊗ THESE PROPERTIES ARE MAISONNETTES (WARDENS)

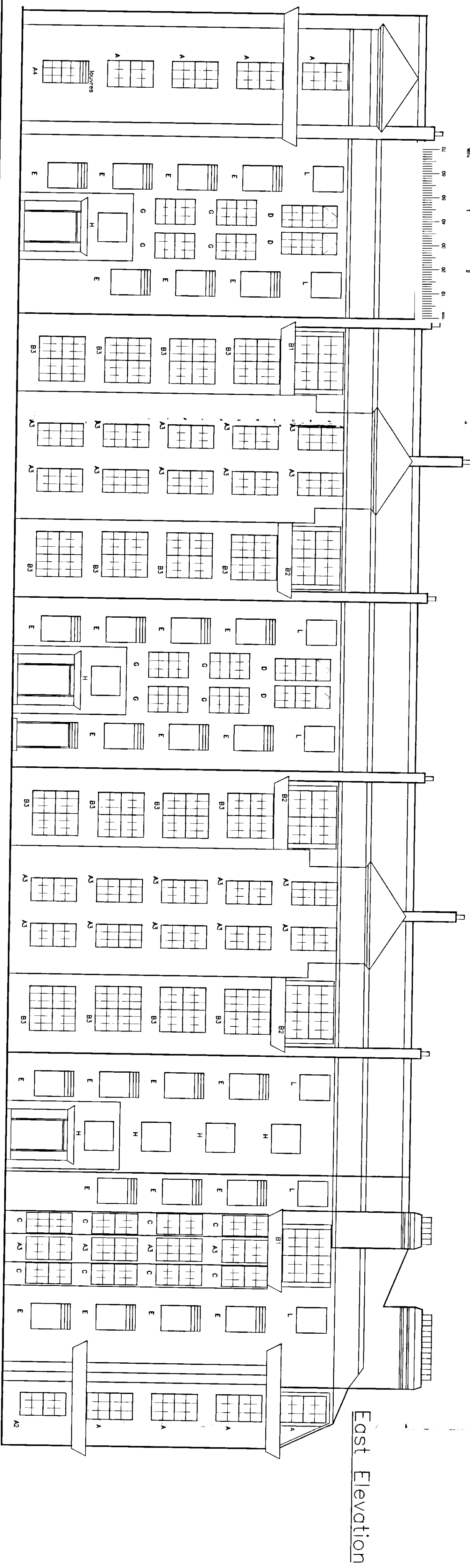
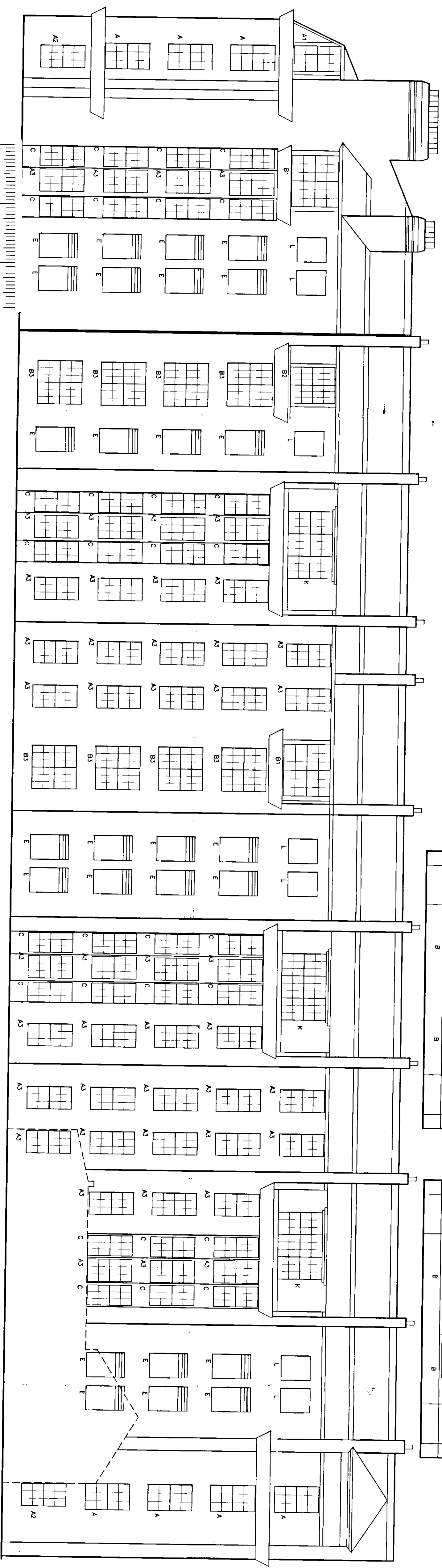
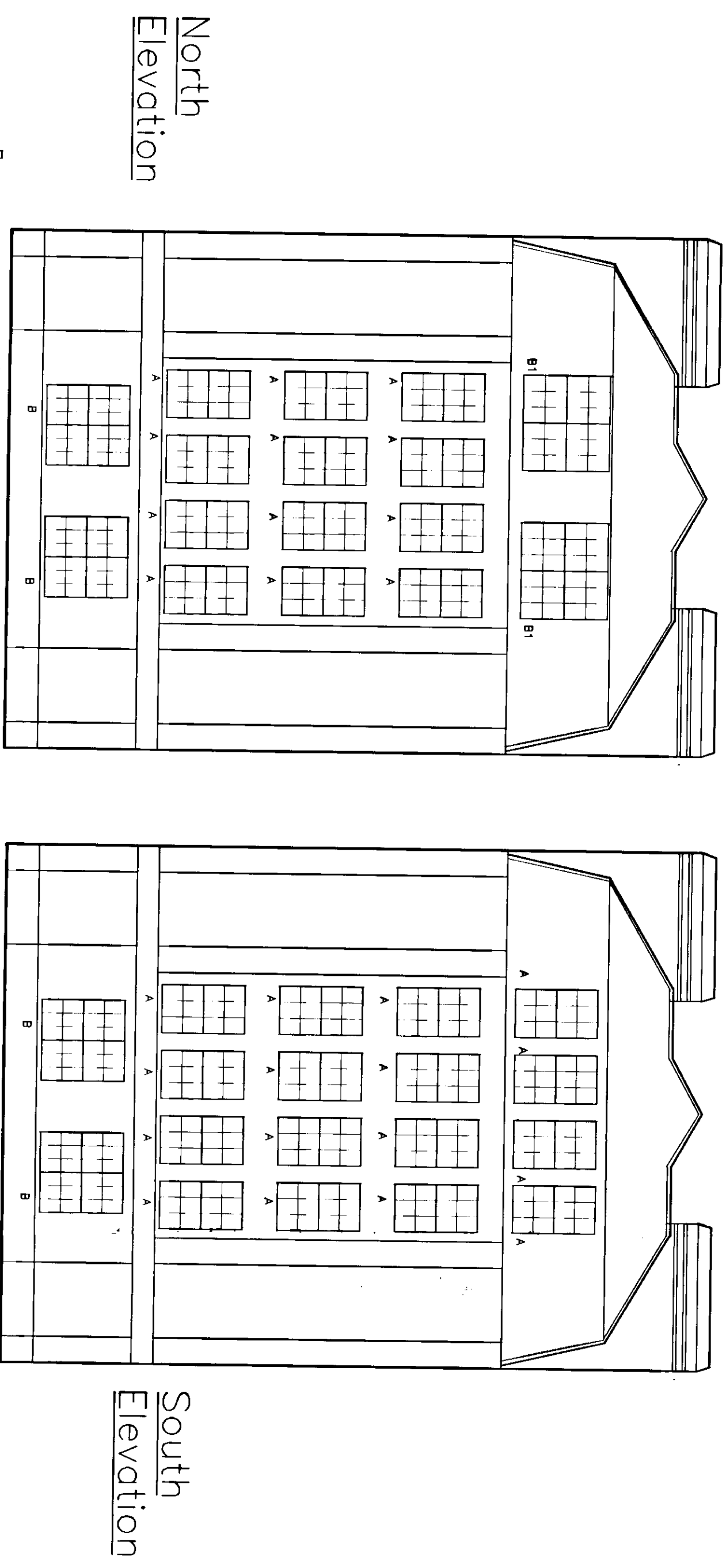
R.S.K. & C.
TOWN PLANNING
- 4 JAN 2001
RECEIVED



Existing Window Design



Total = 209 Windows to be replaced



DO NOT SCALE FROM THIS DRAWING

DELEGATED APPROVAL
 05 MAR 2001
 RECEIVED

PP/010250

JOHN PELLING
 PARTNERS
 CHARTERED
 SURVEYORS

MEMBERS RICS HOME PLANNING BOARD SINCE 2004
 REGISTRATION NO. 64115600 FAX 020 8441 465
 www.johnPELLING.co.uk

Client: William Sutton Trust
 708 The Sutton Estate
 Chelsea, London, SW3

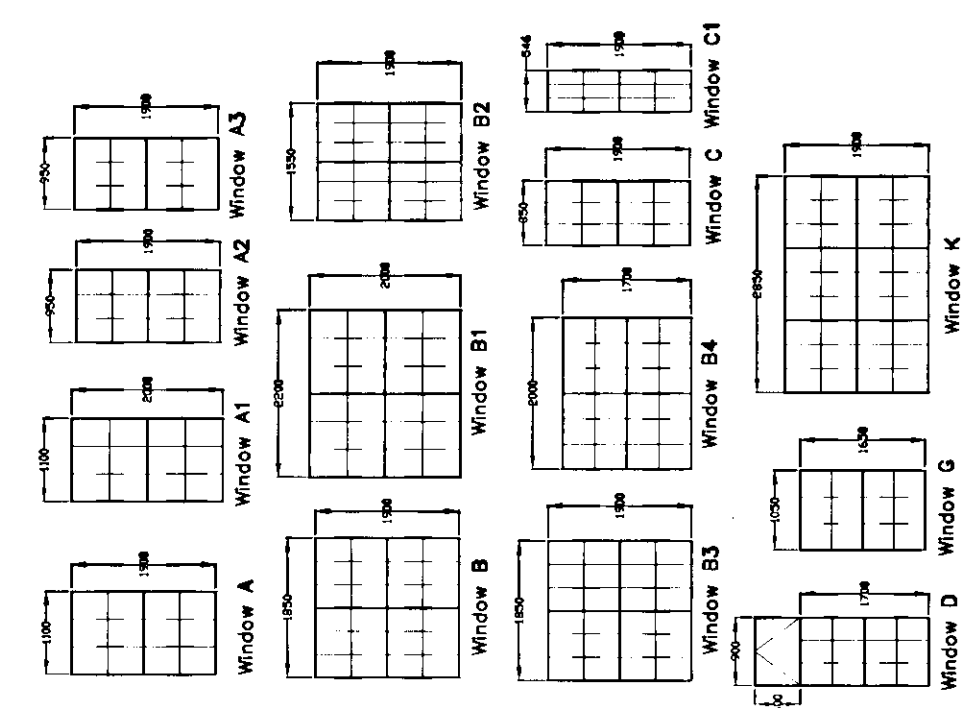
208 The Kingsmill House,
 Existing Elevations &
 Window Design

Scale 1:100
 Date Aug 2000
 DRAWN BS/CAD

DES. NO. 109.5065/9/2
 207

PP/01/00060 ①

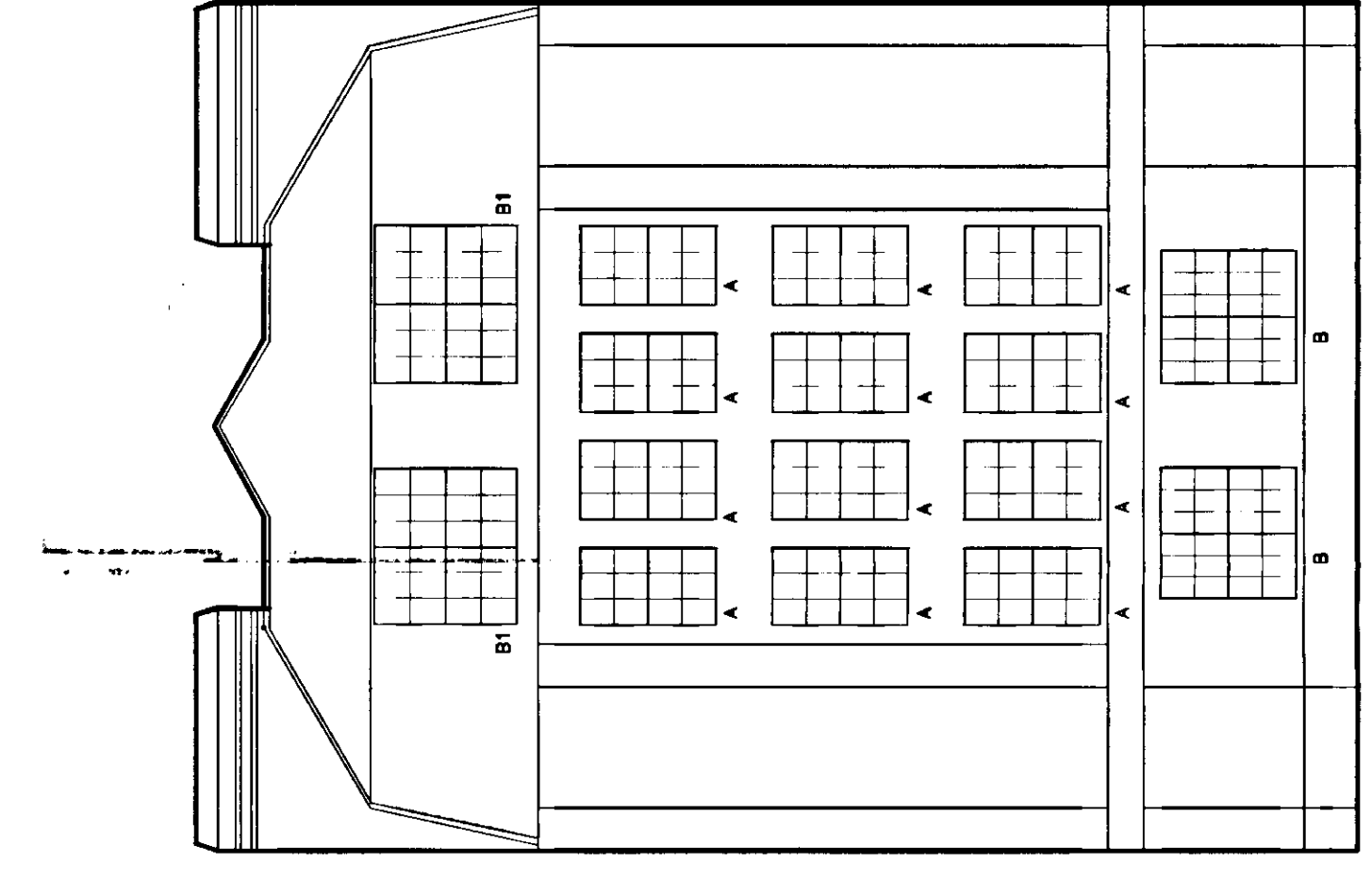
DO NOT SCALE FROM THIS DRAWING



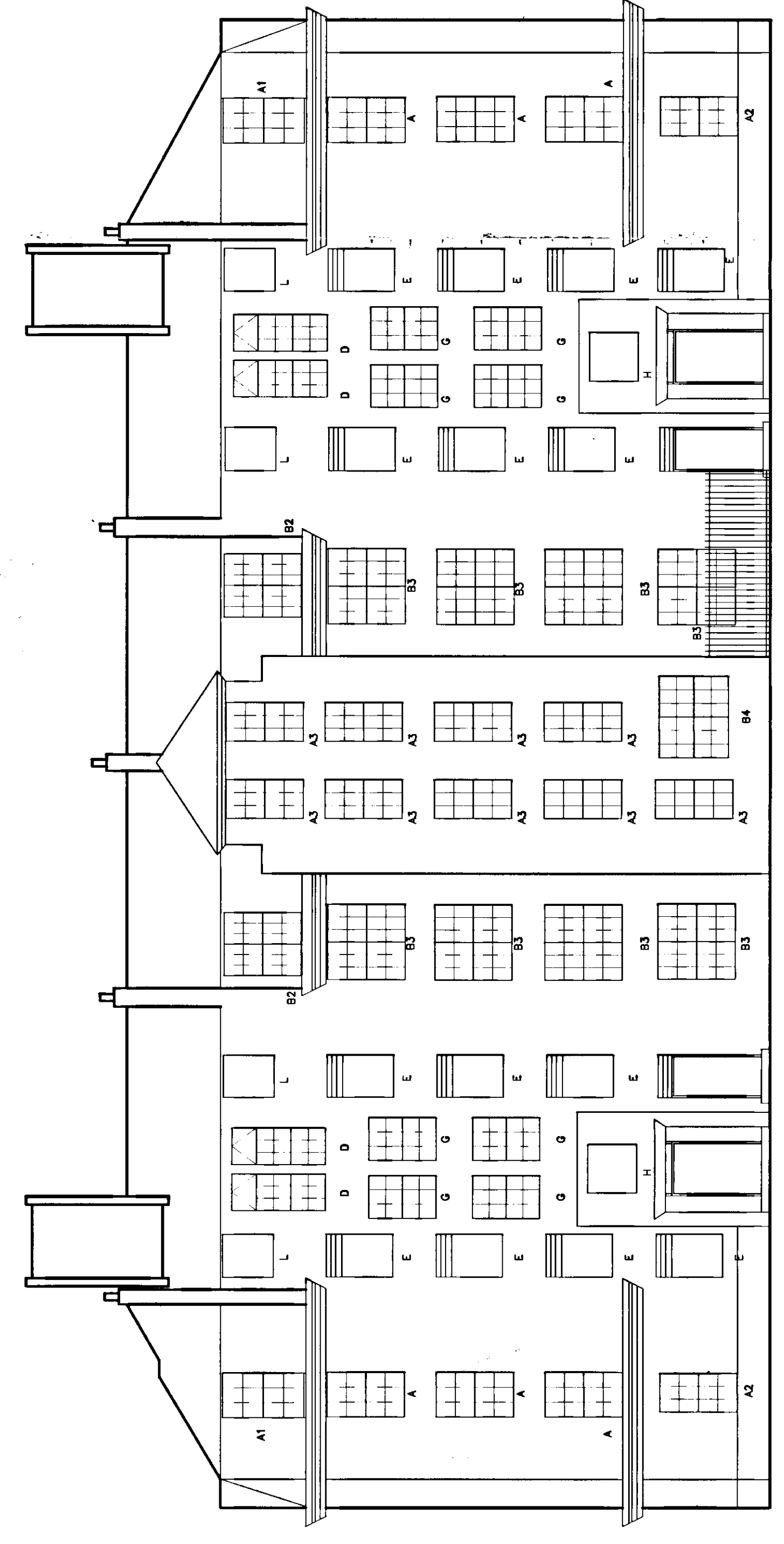
Existing Window Design

- Window A = 36 No.
- Window A1 = 4 No.
- Window A2 = 4 No.
- Window A3 = 33 No.
- Window B = 4 No.
- Window B1 = 4 No.
- Window B2 = 2 No.
- Window B3 = 8 No.
- Window B4 = 1 No.
- Window C = 14 No.
- Window C1 = 1 No.
- Window D = 4 No.
- Window G = 8 No.
- Window K = 2 No.

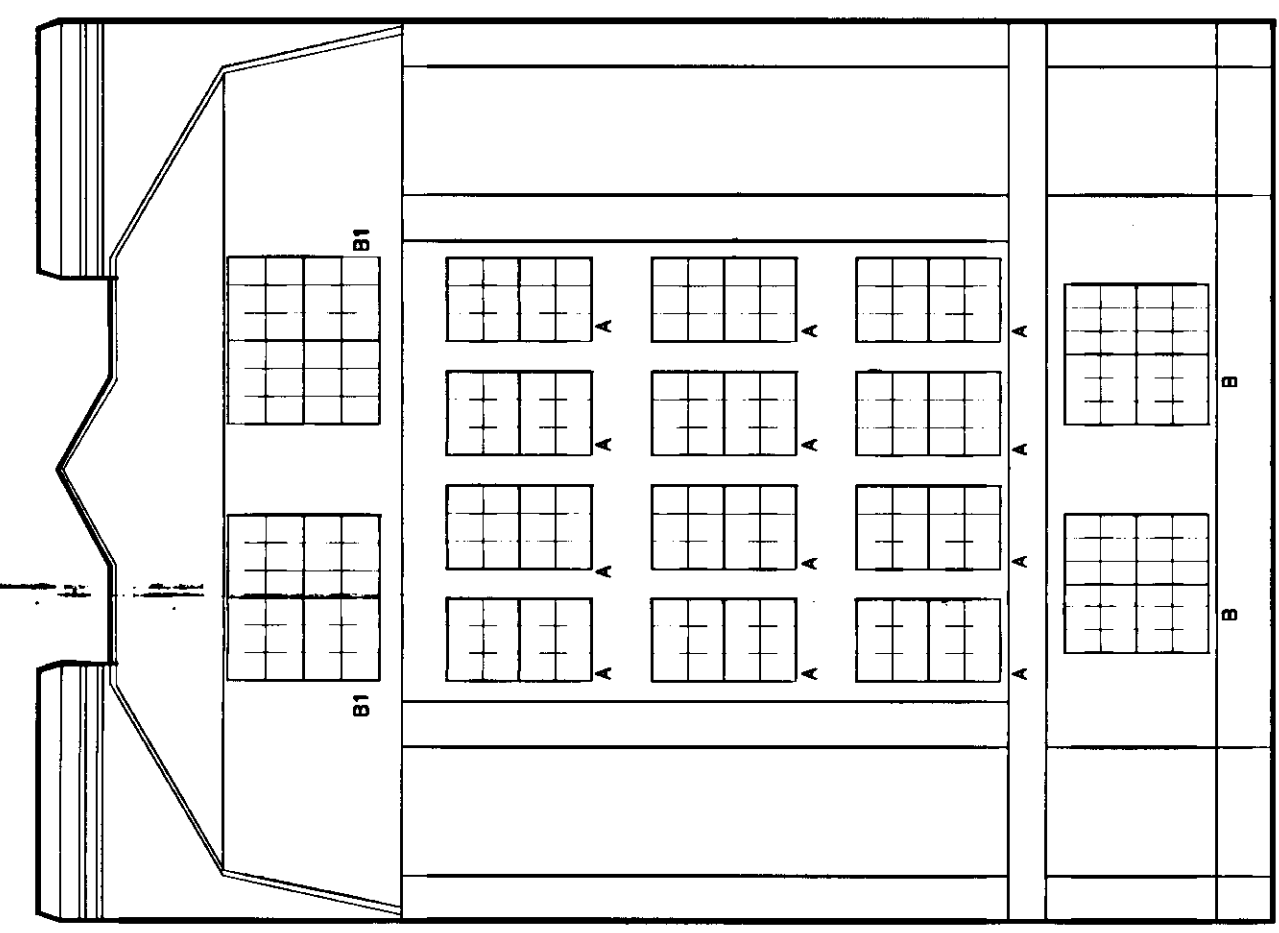
Total = 125 Windows to be replaced



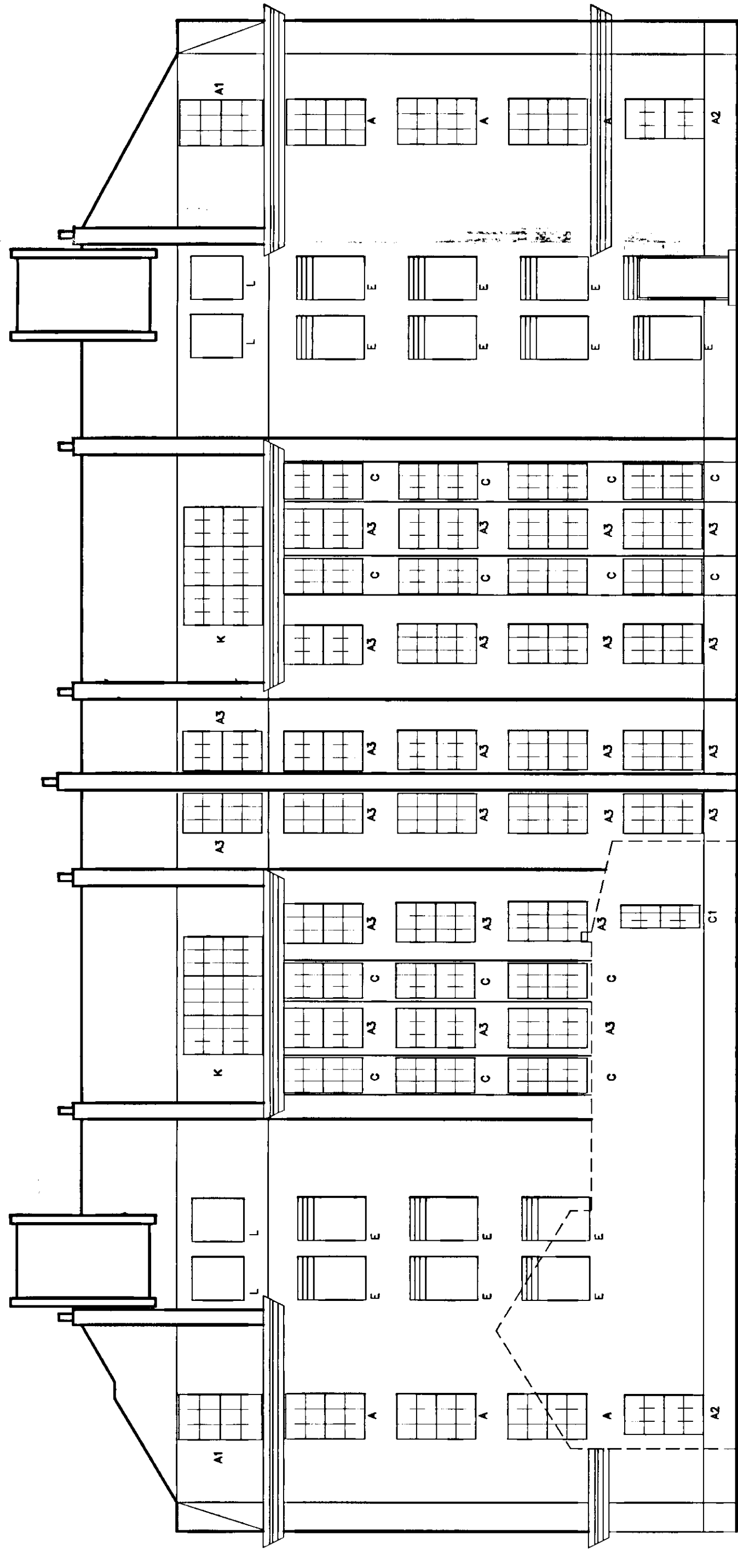
North Elevation



West Elevation



South Elevation



East Elevation

DELEGATED APPROVAL
05 MAR 2001
F. B. & C.
CIVIL PLANNING
- 4 JAN 2001
RECEIVED

PP010260

JOHN PELLING
PARTNERS
CHARTERED
SURVEYORS

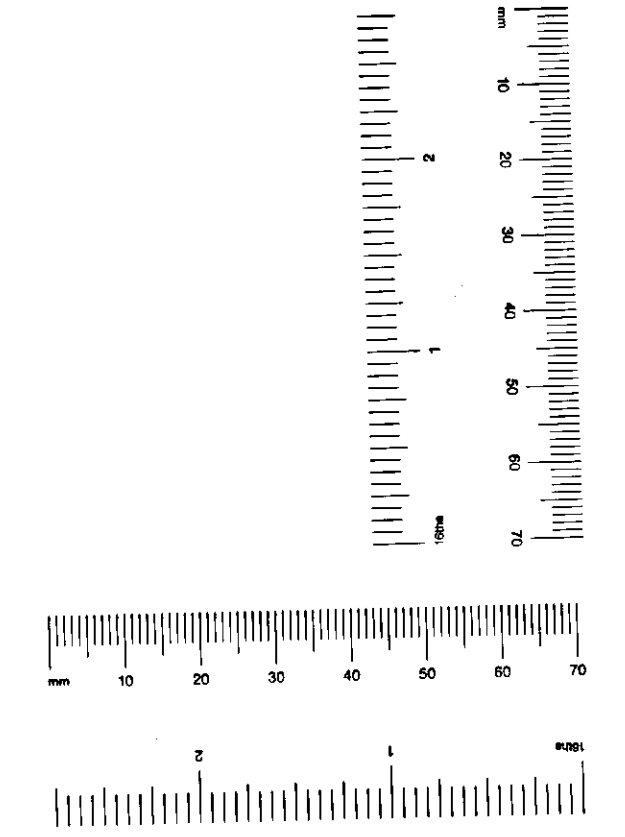
ROYAL INSTITUTE OF SURVEYORS
100, RIVER VALLEY, LONDON, SW3 2JF
TELEPHONE: 020 844 8500 FAX: 020 844 6878
e-mail: john@pellings.co.uk

CLIENT
William Sutton Trust

003
The Sutton Estate
Chelsea, London, SW3

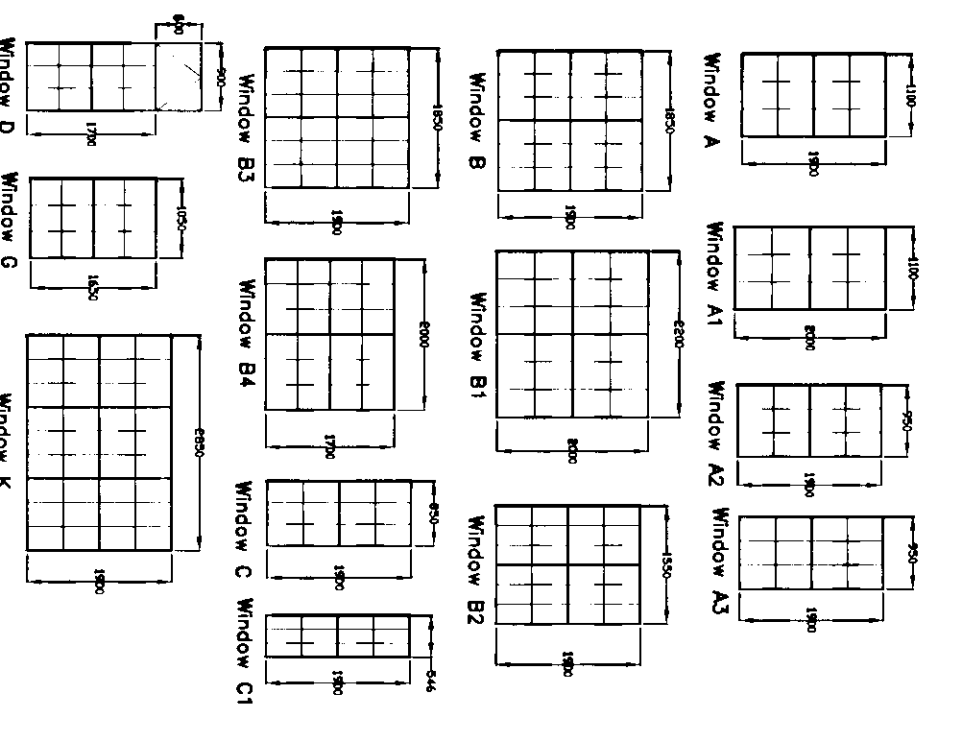
004
Jenningsbury House
Existing Elevations &
Window Design

SCALE 1:100
DATE Aug 2000
DRAWN BS/CAD
PROJECT NO 103.566.9/1
887

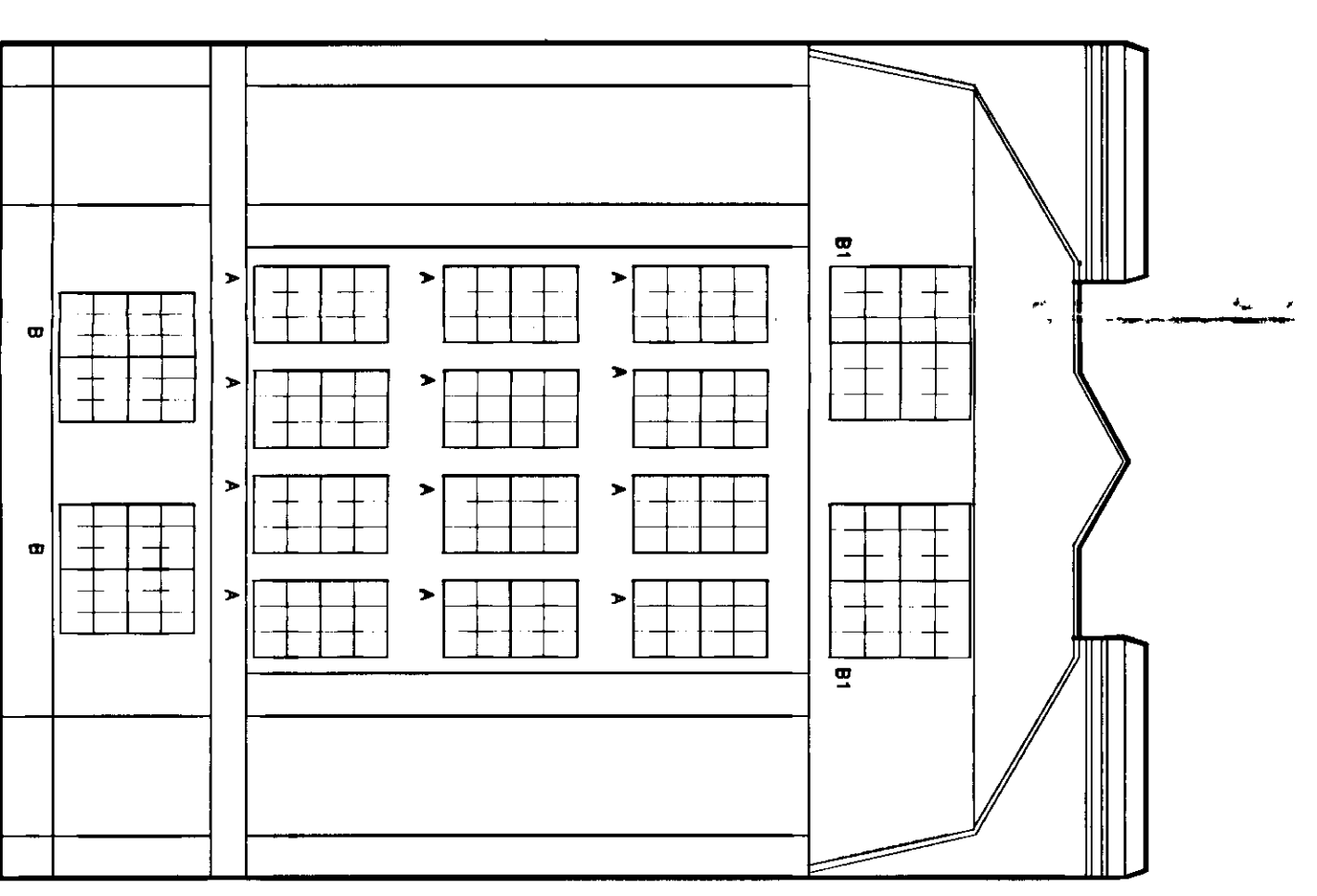


PP/01/00260 (3)

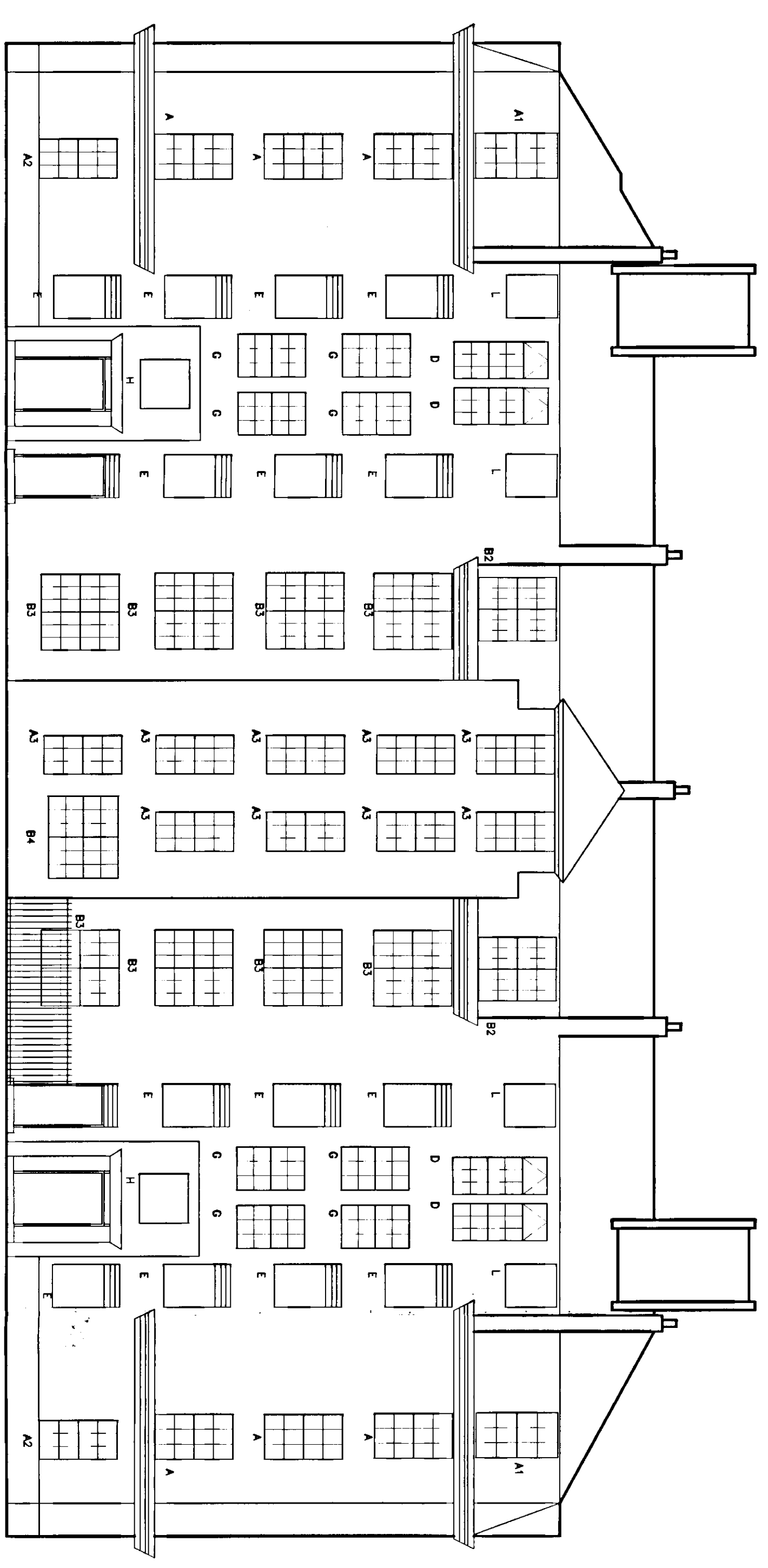
DO NOT SCALE FROM THIS DRAWING



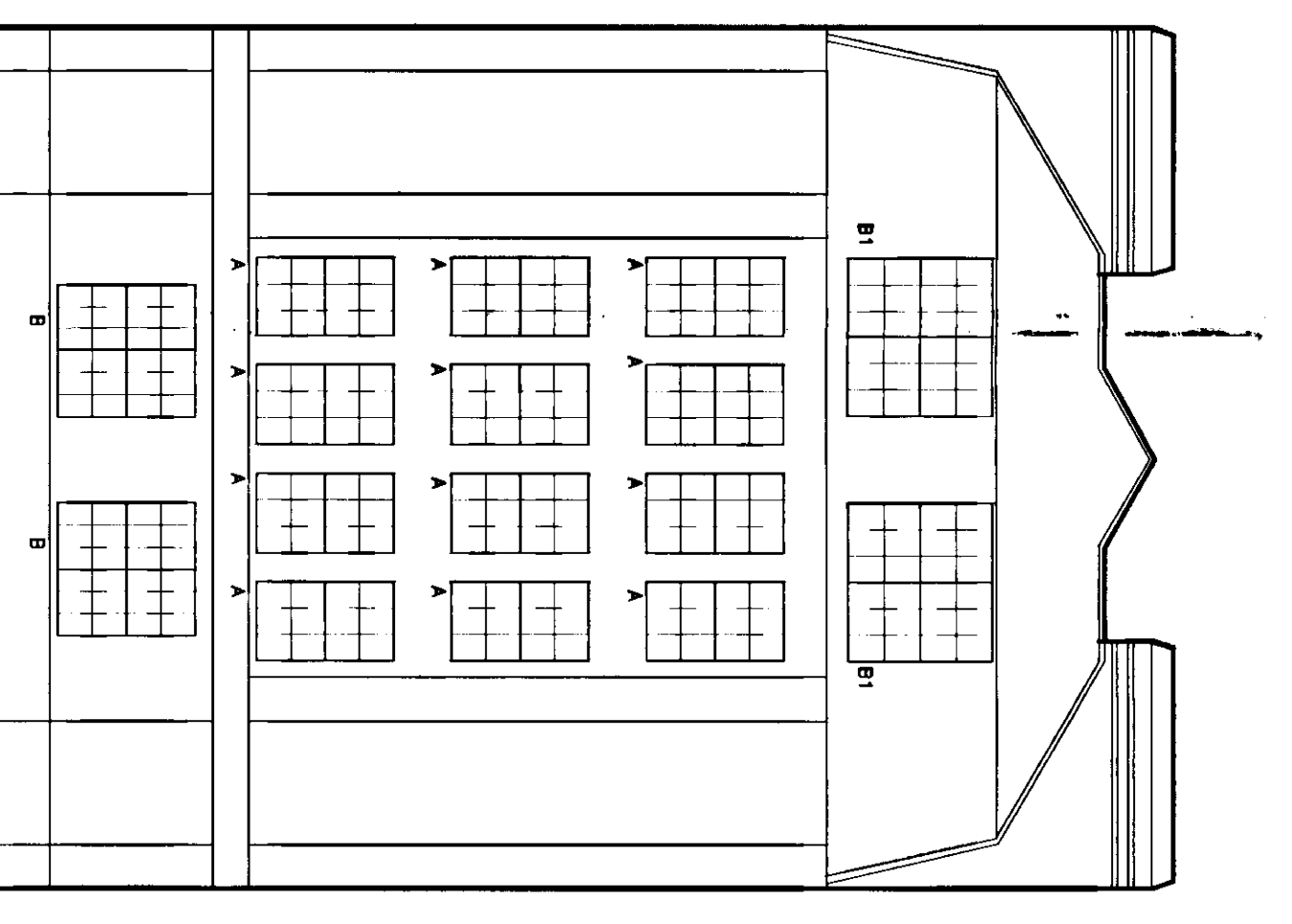
Existing Window Design



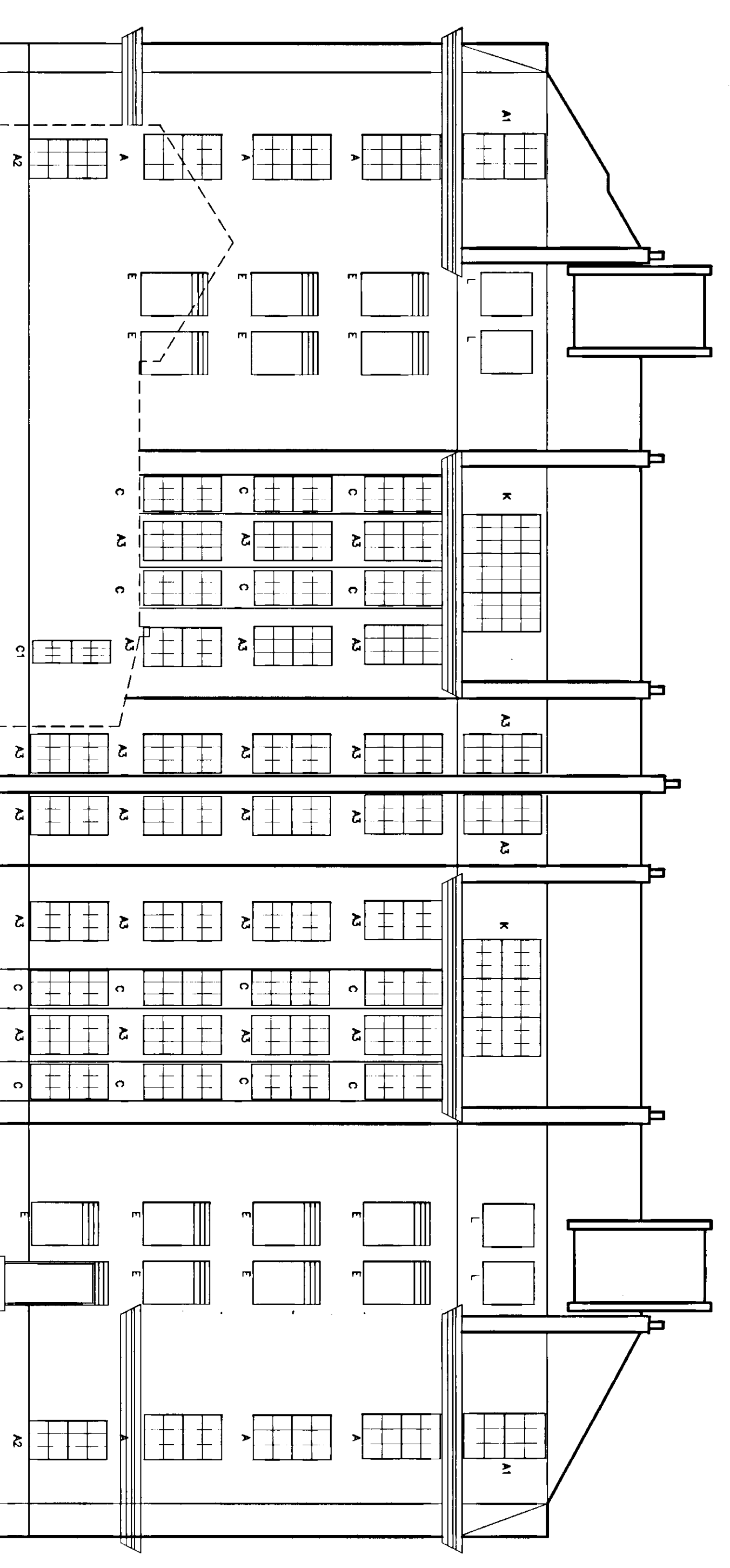
North Elevation



West Elevation



South Elevation



East Elevation



R.E.K. & C.
 TOWN PLANNING
 - 4 JUN 2001
 RECEIVED

PP/01/0260

JOHN PELLING
 PARTNERS
 CHARITABLE
 SURVEYORS

REGISTERED ARCHITECTS
 225, Abchurch Lane, London EC4N 3DF
 Tel: 020 7424 2500
 Fax: 020 7424 2501
 Email: john@pellings.co.uk

Client: William Sutton Trust

201
 The Sutton Estate
 Chelsea, London, SW3

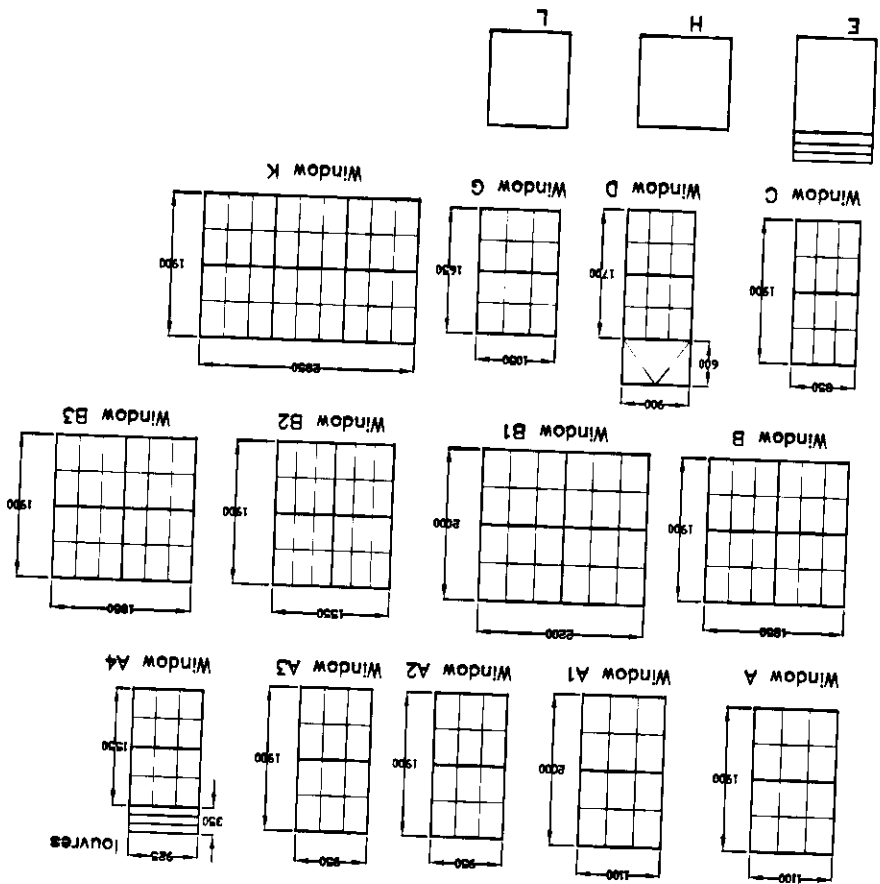
016 mtd Jemingsbury House
 Existing Elevations &
 Window Design

Scale 1:100
 Date Aug 2000
 Drawn BS/CAO

109 5566 9/1

BS7

Existing Window Design

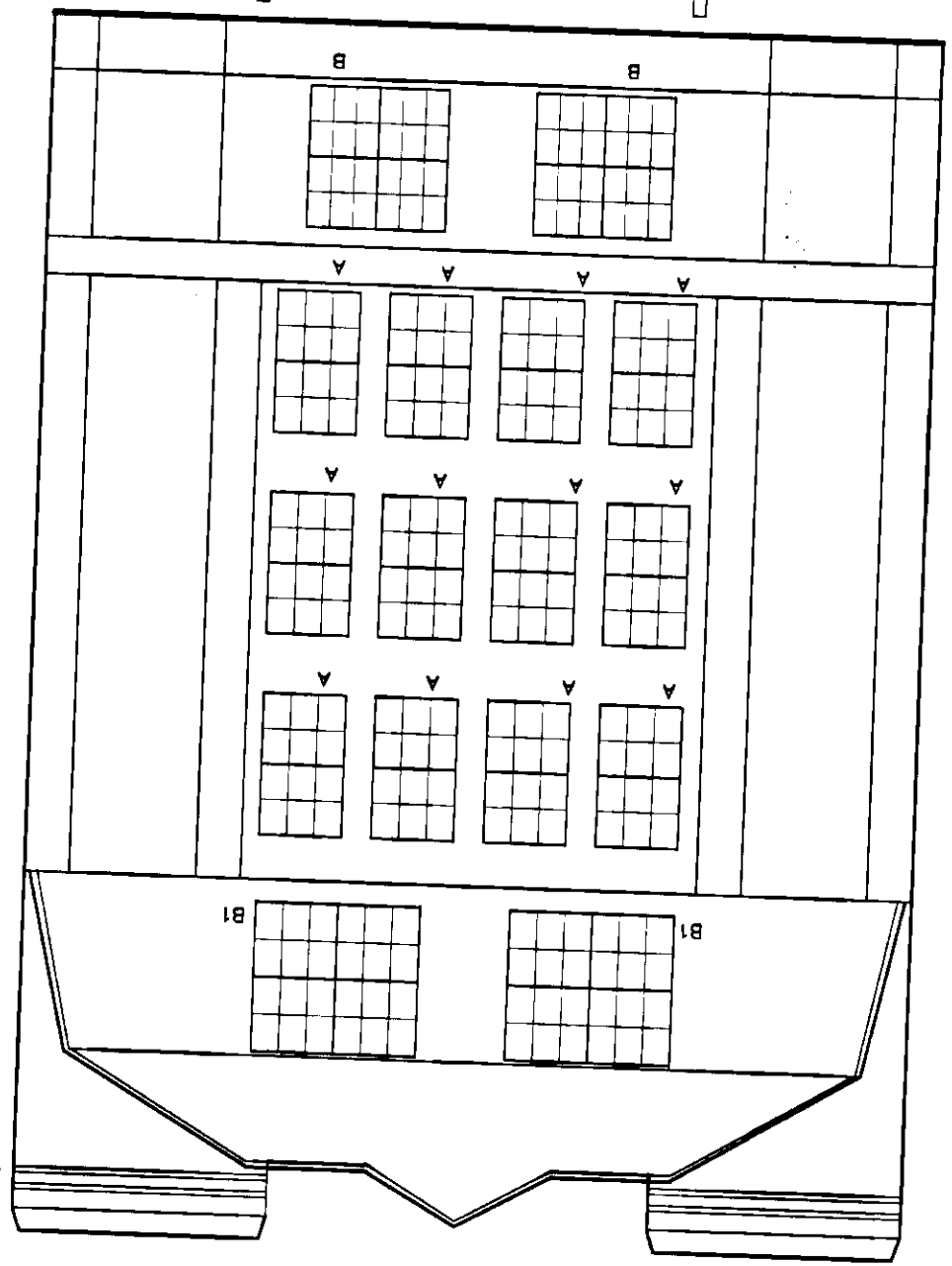


Total = 202 Windows to be replaced

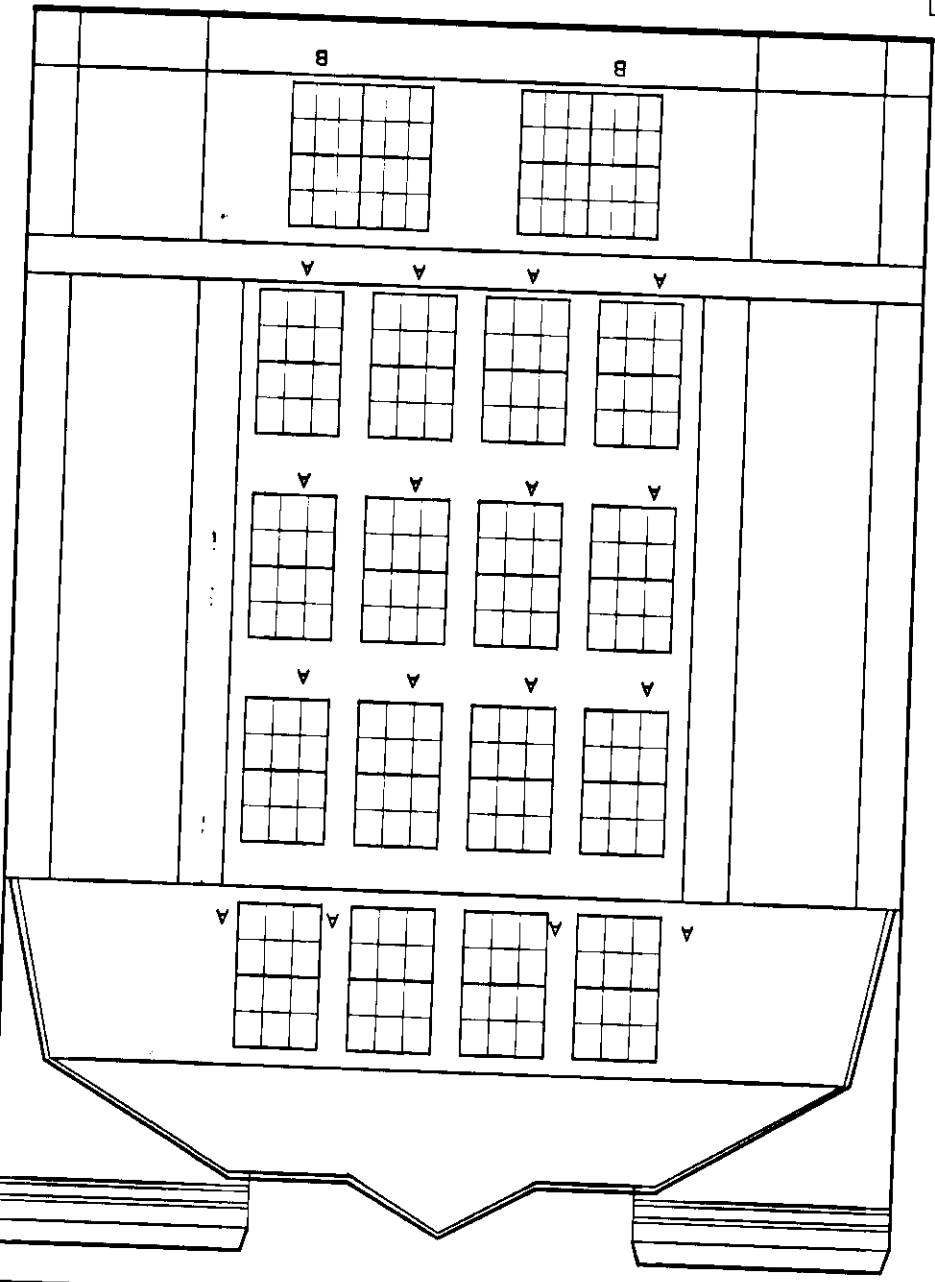
West Elevation



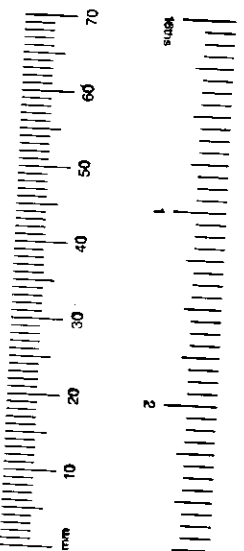
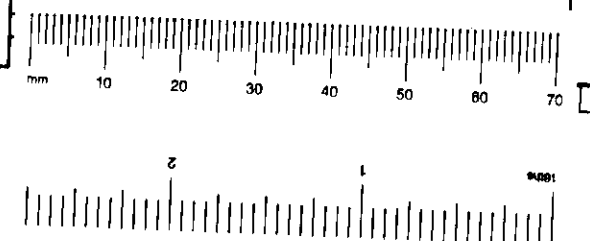
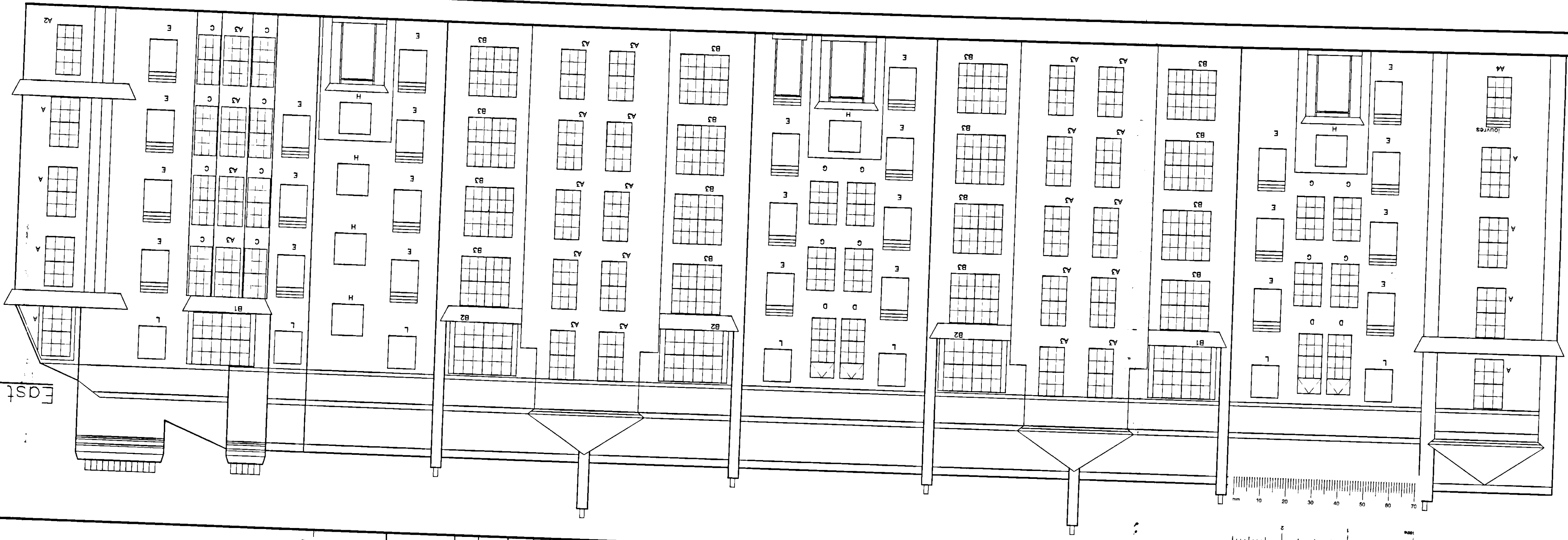
North Elevation



South Elevation



East Elevation



RECEIVED
R.B.K. & C.
TOWN PLANNING
- 4 JAN 2001

PP010260

JOHN PELLING
PARTNERS
CHARTERED
SURVEYORS
NORTHERN HOUSE MOUNT PLEASANT BARRIS HENRY 3RD FLOOR
TELEPHONE: 020 9441 8000 FAX: 020 9441 4818
E-MAIL: j.pelling@jpellings.co.uk

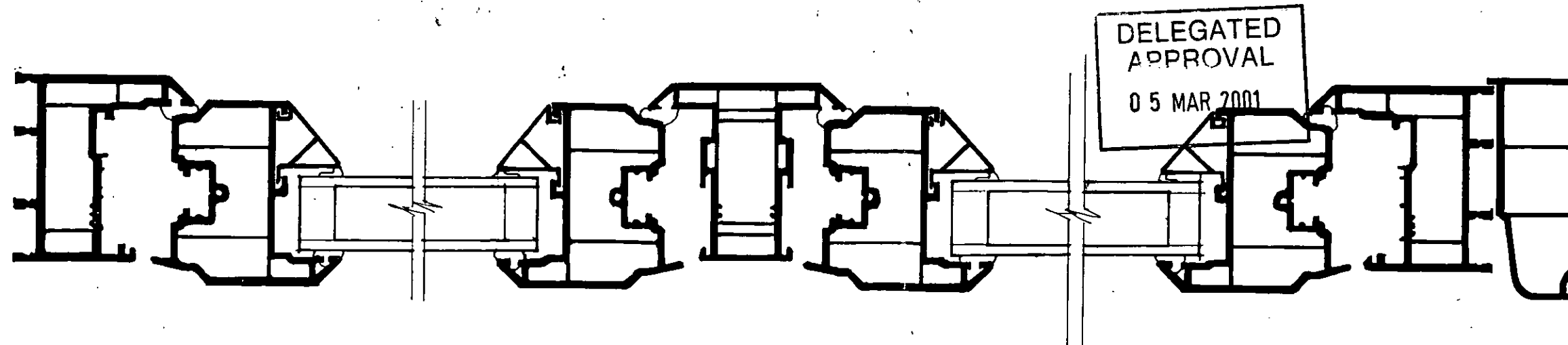
CUSTOMER: William Sutton Trust
JOB: The Sutton Estate, Chelsea, London, SW3

DESIGN: J.M.P. Kingsmill House, Existing Elevations & Window Design
SCALE: 1:100
DATE: Aug 2000
DRAWN: BS/CAD
REV: 109.566.9/2

DO NOT SCALE FROM THIS DRAWING

PP/61/00360 (4)

DO NOT SCALE FROM THIS DRAWING.

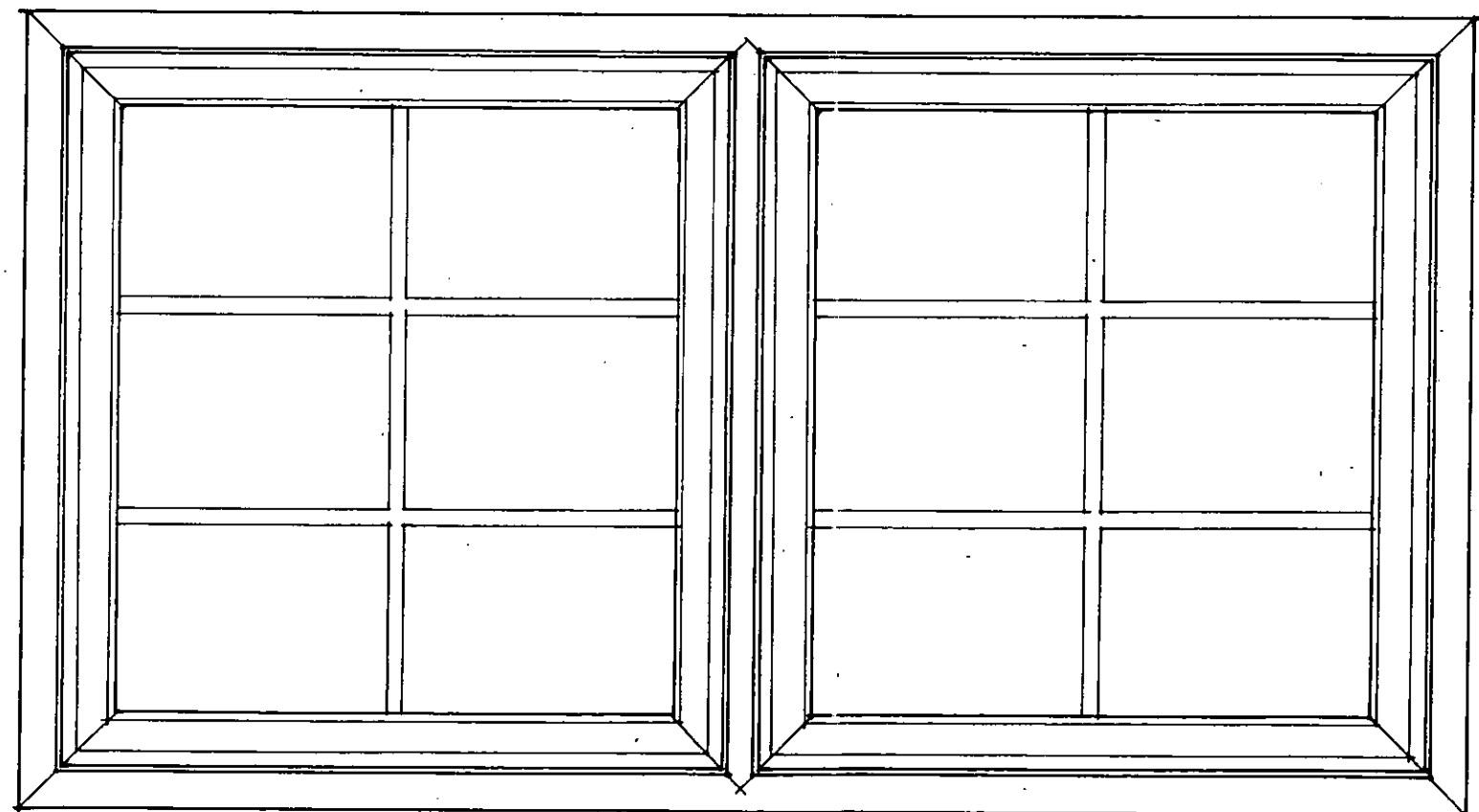


DELEGATED
APPROVAL
05 MAR 2001

SECTION 2
Scale 1:2

PP010260

R.B.K.&C.
TOWN PLANNING
2 - FEB 2001
RECEIVED



ELEVATION 2
Scale 1:10

JOHN PELLING
PARTNERS
CHARTERED
SURVEYORS
NORTHSIDE HOUSE
MOUNT PLEASANT BARNET HERTS EN4 9EB
TELEPHONE: 0181 441 8500 FAX: 0181 441 4616

CLIENT
WILLIAM SUTTON TRUST

JOB
RENEWAL OF WINDOWS
CALE STREET, CHELSEA

DRG TITLE
REVERSIBLE WINDOWS
TYPICAL DETAILS

DATE
JANUARY 2001

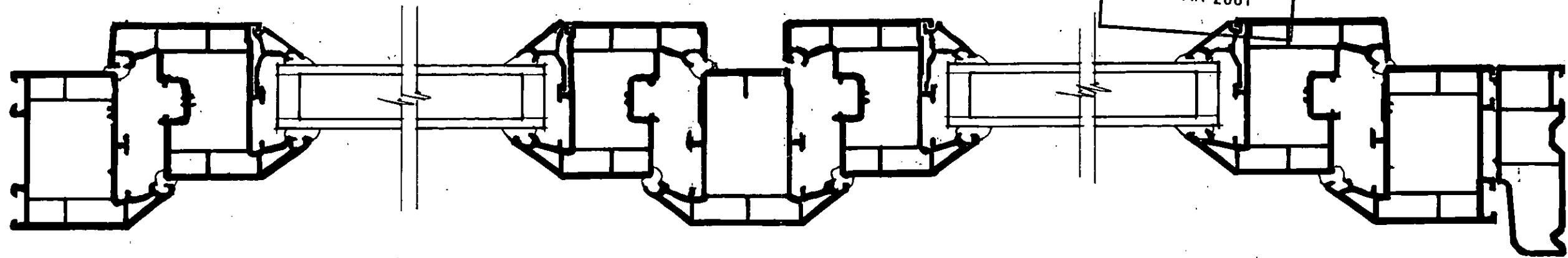
DRAWN
JFM

SCALE
AS SHOWN

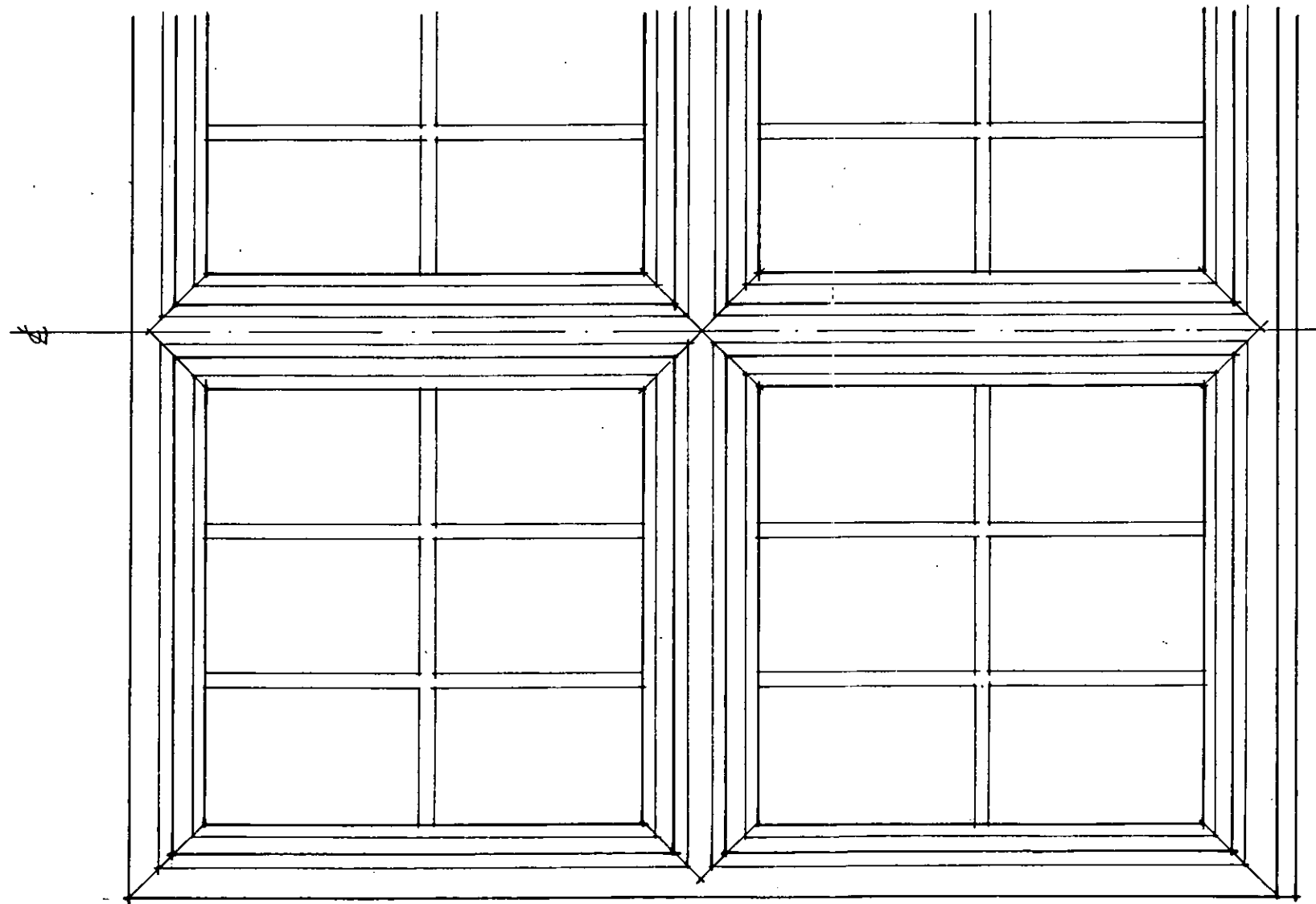
DRG NO 100.566.9 / 3	REV
-------------------------	-----

DO NOT SCALE FROM THIS DRAWING.

DELEGATED
APPROVAL
05 MAR 2001



SECTION
SCALE 1:2



SCALE 1:10

ELEVATION

PP010260

R.B.K.& C.
TOWN PLANNING
2 - FEB 2001
RECEIVED

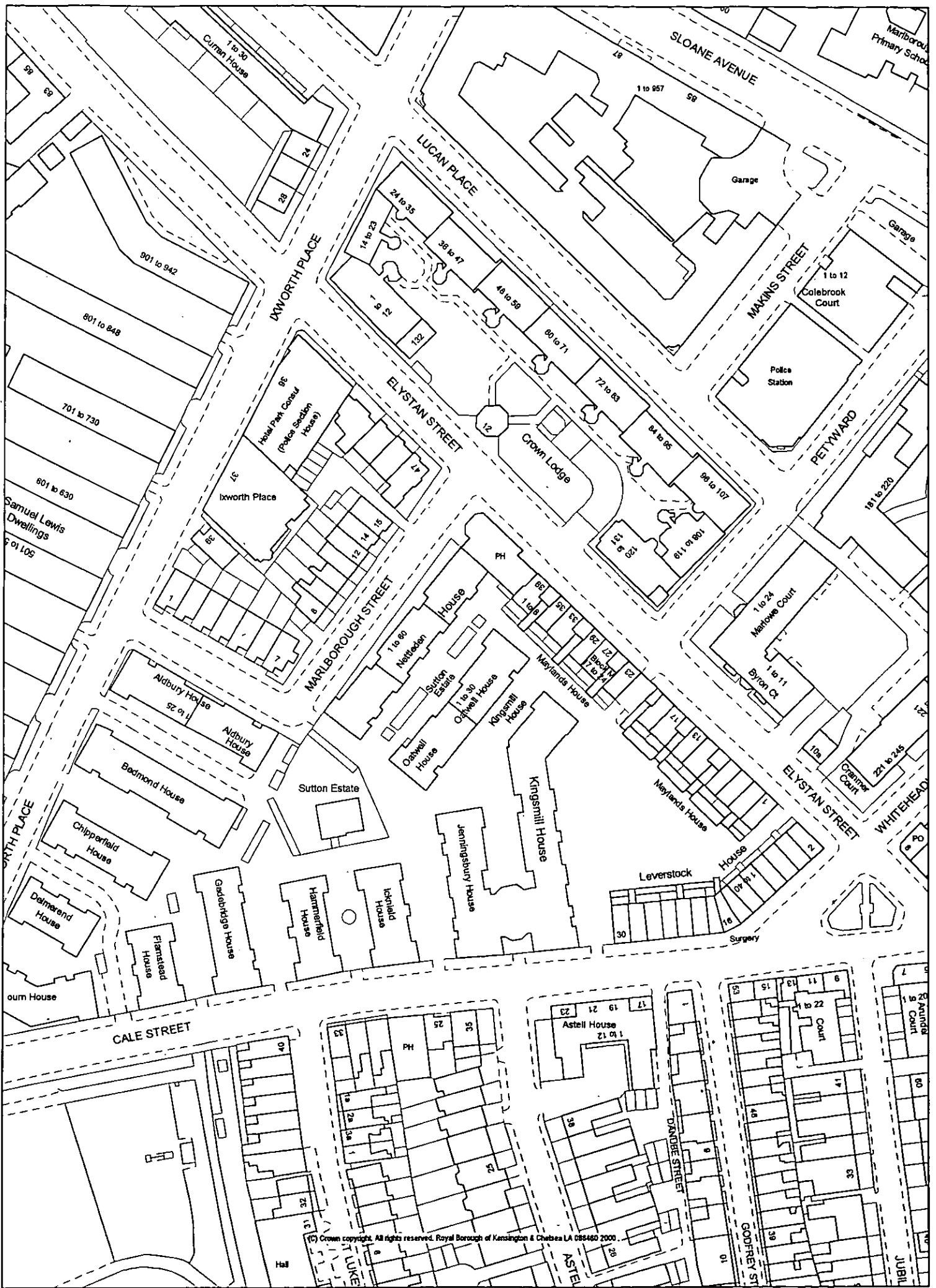
JOHN PELLING
PARTNERS
CHARTERED
SURVEYORS
NORTHSIDE HOUSE
MOUNT PLEASANT BARNET HERTS EN4 9EB
TELEPHONE: 0181 441 8980 FAX: 0181 441 4616

CLIENT
WILLIAM SUTTON TRUST
JOB
RENEWAL OF WINDOWS
CALE STREET, CHELSEA

DRG TITLE
TILT & TURN WINDOW
TYPICAL DETAILS

DATE
January 2001
DRAWN
JFM

SCALE
DRG NO
109.566.9/4
REV



Map produced by the Royal Borough of Kensington and Chelsea
 Planning Services Department using GGP 06/02/2001: Scale 1:1250



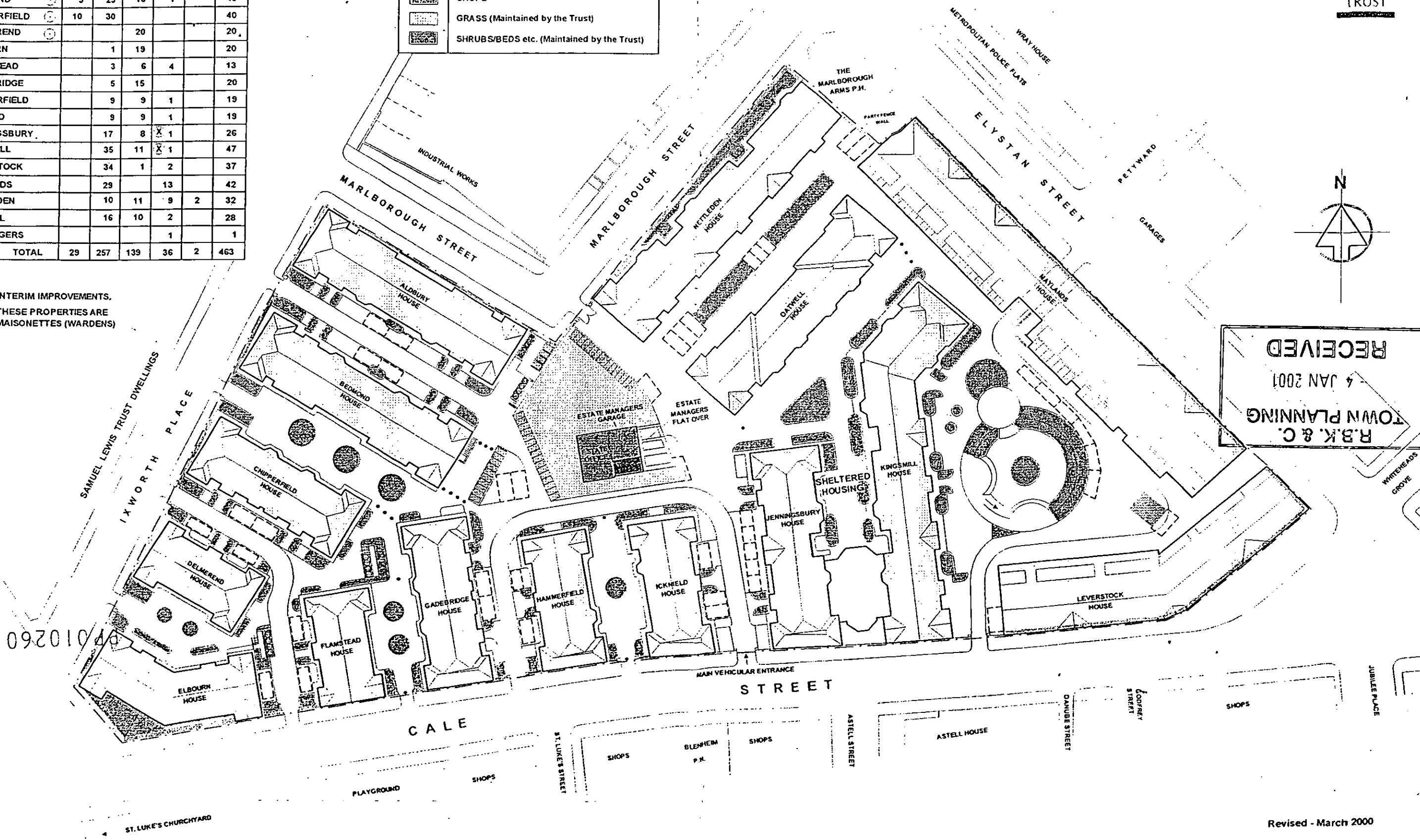
CHELSEA ESTATE LONDON



HOUSE NAMES	TYPE					TOTAL
	F	F1	F2	F3	F4	
	Beds	1 Bed'm	2 Bed'm	3 Bed'm	4 Bed'm	
ALDBURY	10	30	10			50
BEDMOND	9	29	10	1		49
CHIPPERFIELD	10	30				40
DELMEREND			20			20
ELBOURN		1	19			20
FLAMSTEAD		3	6	4		13
GADEBRIDGE		5	15			20
HAMMERFIELD		9	9	1		19
ICKNIELD		9	9	1		19
JENNINGSBURY		17	8	X 1		26
KINGSMILL		35	11	X 1		47
LEVERSTOCK		34	1	2		37
MAYLANDS		29		13		42
NETTLEDEN		10	11	9	2	32
OATWELL		16	10	2		28
E. MANAGERS				1		1
TOTAL	29	257	139	36	2	463

- STORE SHEDS
- DUSTBIN ENCLOSURES
- ESTATE MANAGERS FLAT & OFFICE
- TRANSFORMER SUBSTATION
- PARKING SPACES
- SHOPS
- GRASS (Maintained by the Trust)
- SHRUBS/BEDS etc. (Maintained by the Trust)

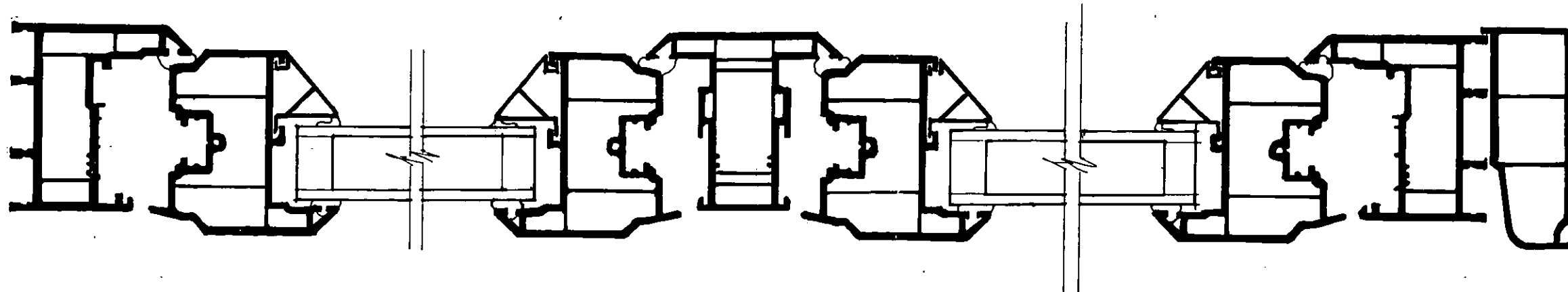
- INTERIM IMPROVEMENTS.
- THESE PROPERTIES ARE MAISONNETTES (WARDENS)



RECEIVED
 4 JAN 2001
 TOWN PLANNING
 R.B.K. & C.

010260

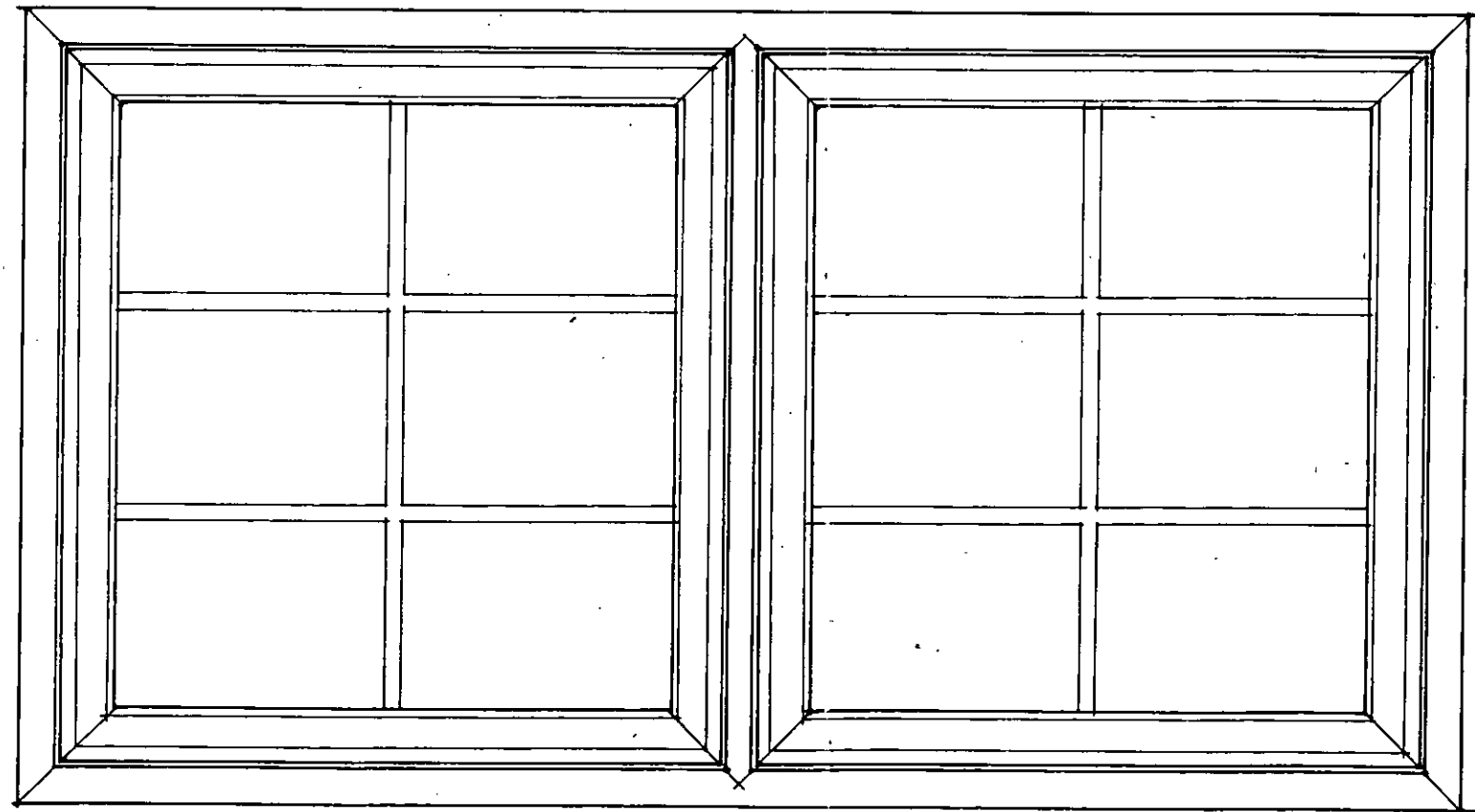
DO NOT SCALE FROM THIS DRAWING.



SECTION 2
Scale 1:2

PP010260

R.B.K. & C.
TOWN PLANNING
2 - FEB 2001
RECEIVED



ELEVATION 2
Scale 1:10

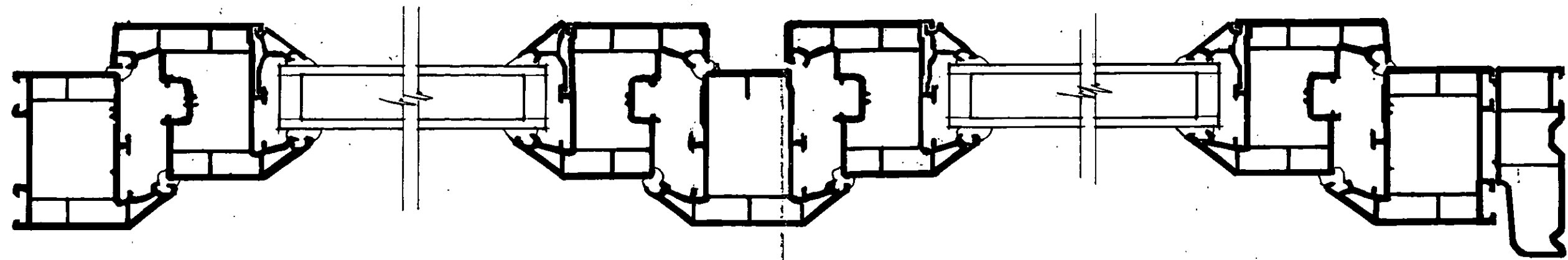
JOHN PELLING
PARTNERS
CHARTERED
SURVEYORS
NORTHSIDE HOUSE
MOUNT PLEASANT BARNET HEATH EN4 9EB
TELEPHONE: 0181 441 8500 FAX: 0181 441 4616

CLIENT
WILLIAM SUTTON TRUST
JOB
RENEWAL OF WINDOWS
CALE STREET, CHELSEA

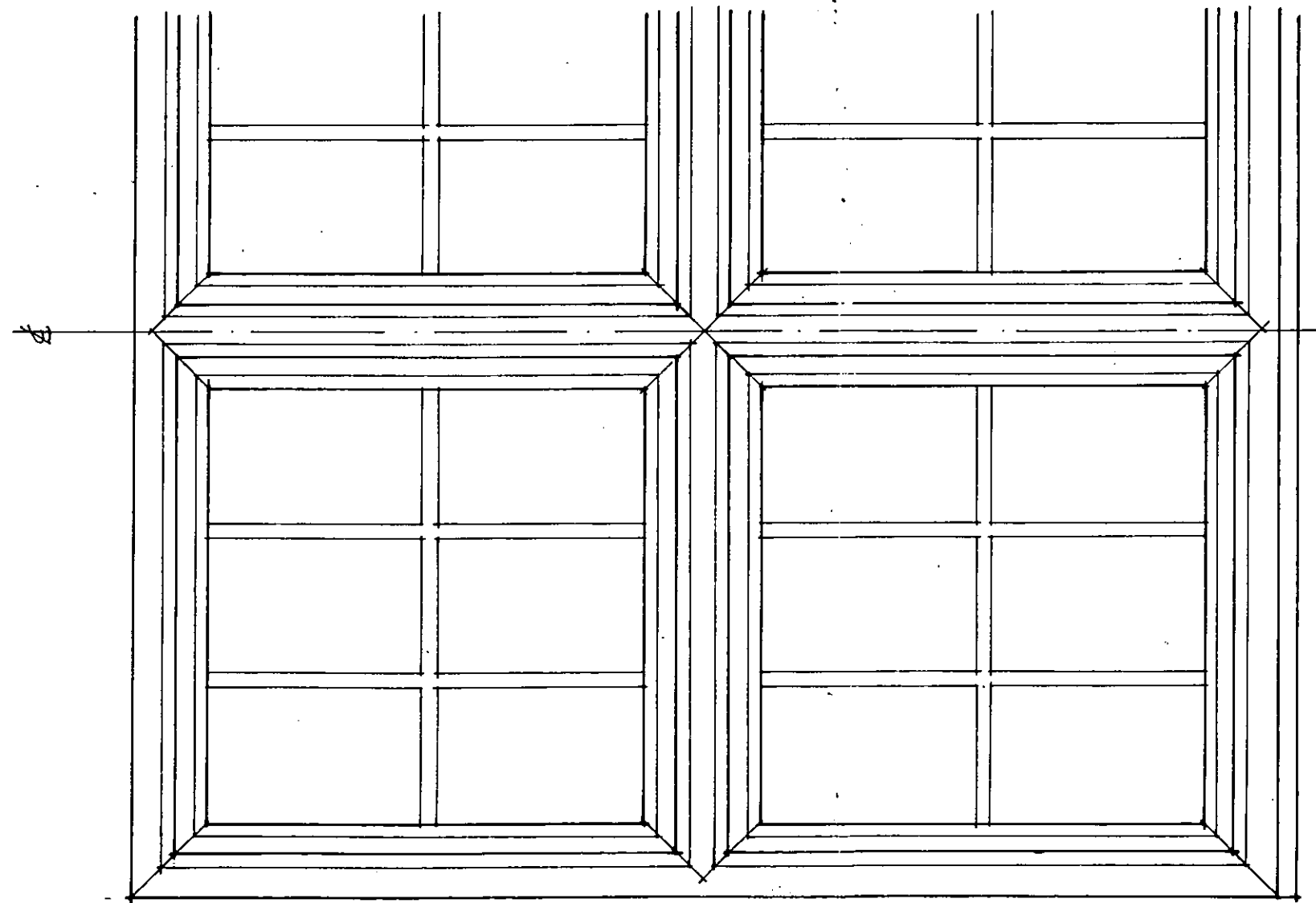
DRG TITLE
REVERSIBLE WINDOWS
TYPICAL DETAILS

DATE
JANUARY 2001
DRAWN
JFM

SCALE
AS SHOWN
DRG NO
100.566.9 / 3
REV



SECTION 2
SCALE 1:2



SCALE 1:10

ELEVATION

PP010260
R.B.K.&C.
TOWN PLANNING
2 - FEB 2001
RECEIVED

JOHN PELLING
PARTNERS
CHARTERED
SURVEYORS
NORTHSIDE HOUSE
MOUNT PLEASANT BARNET HERTS EN4 9EB
TELEPHONE: 0181 441 8500 FAX: 0181 441 4616

CLIENT
WILLIAM SUTTON TRUST
JOB
RENEWAL OF WINDOWS
CALE STREET, CHELSEA

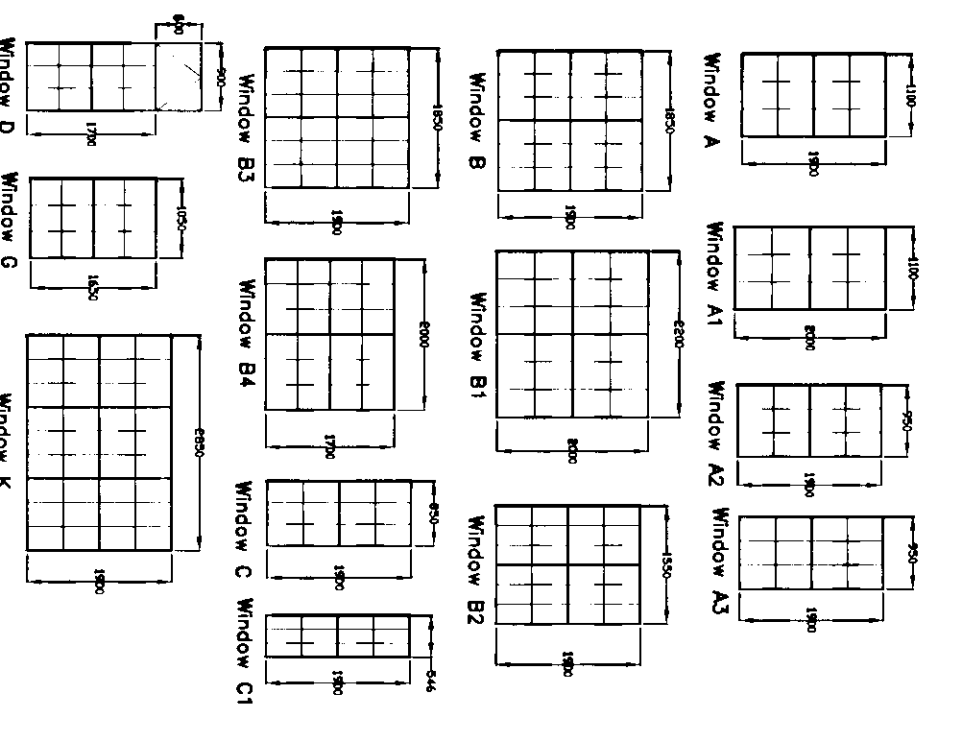
DRG TITLE
TILT & TURN WINDOW
TYPICAL DETAILS

DATE January 2001
DRAWN JFM

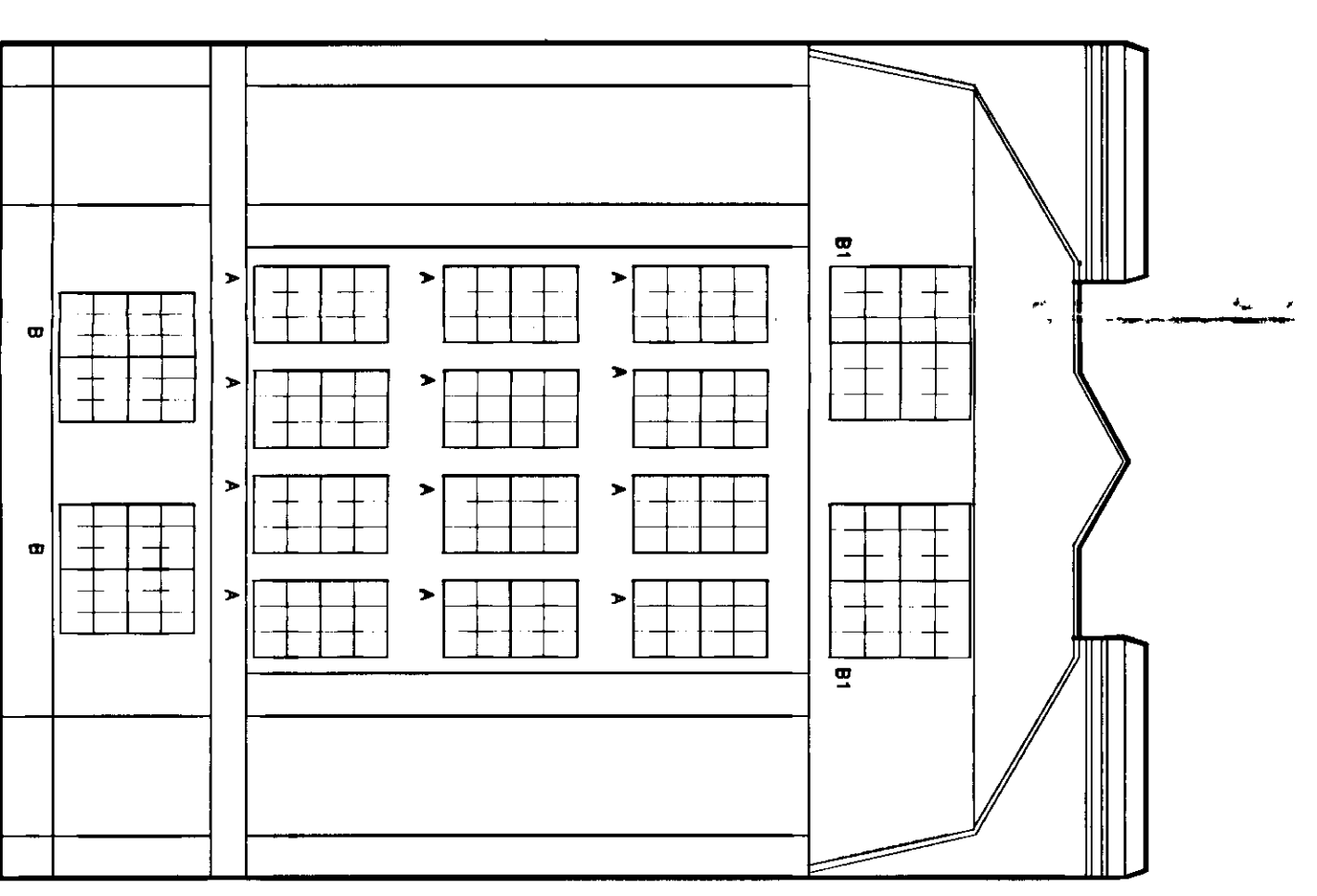
SCALE
DRG NO 100.566.9/4
REV

PP/01/00260 (3)

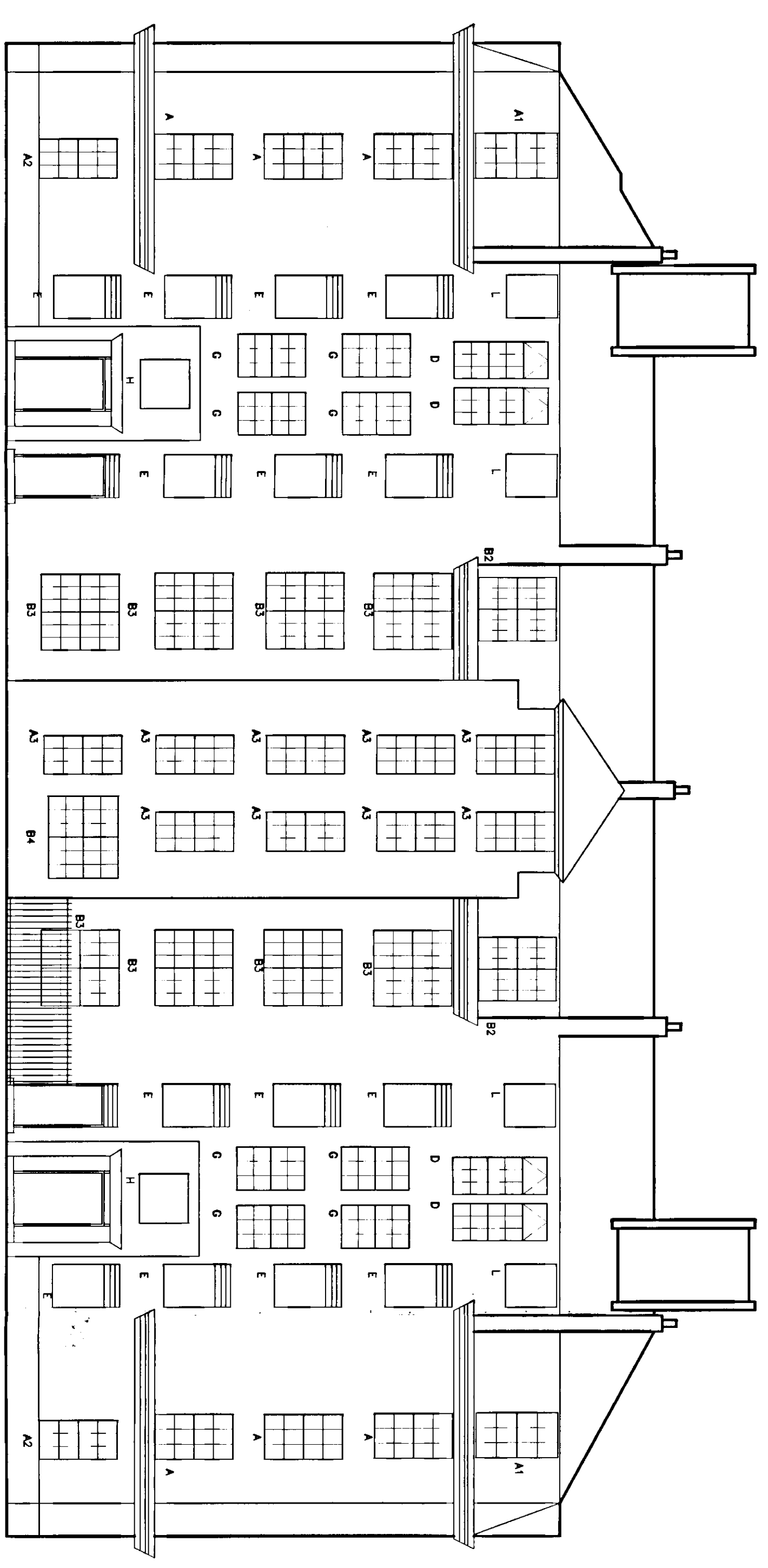
DO NOT SCALE FROM THIS DRAWING



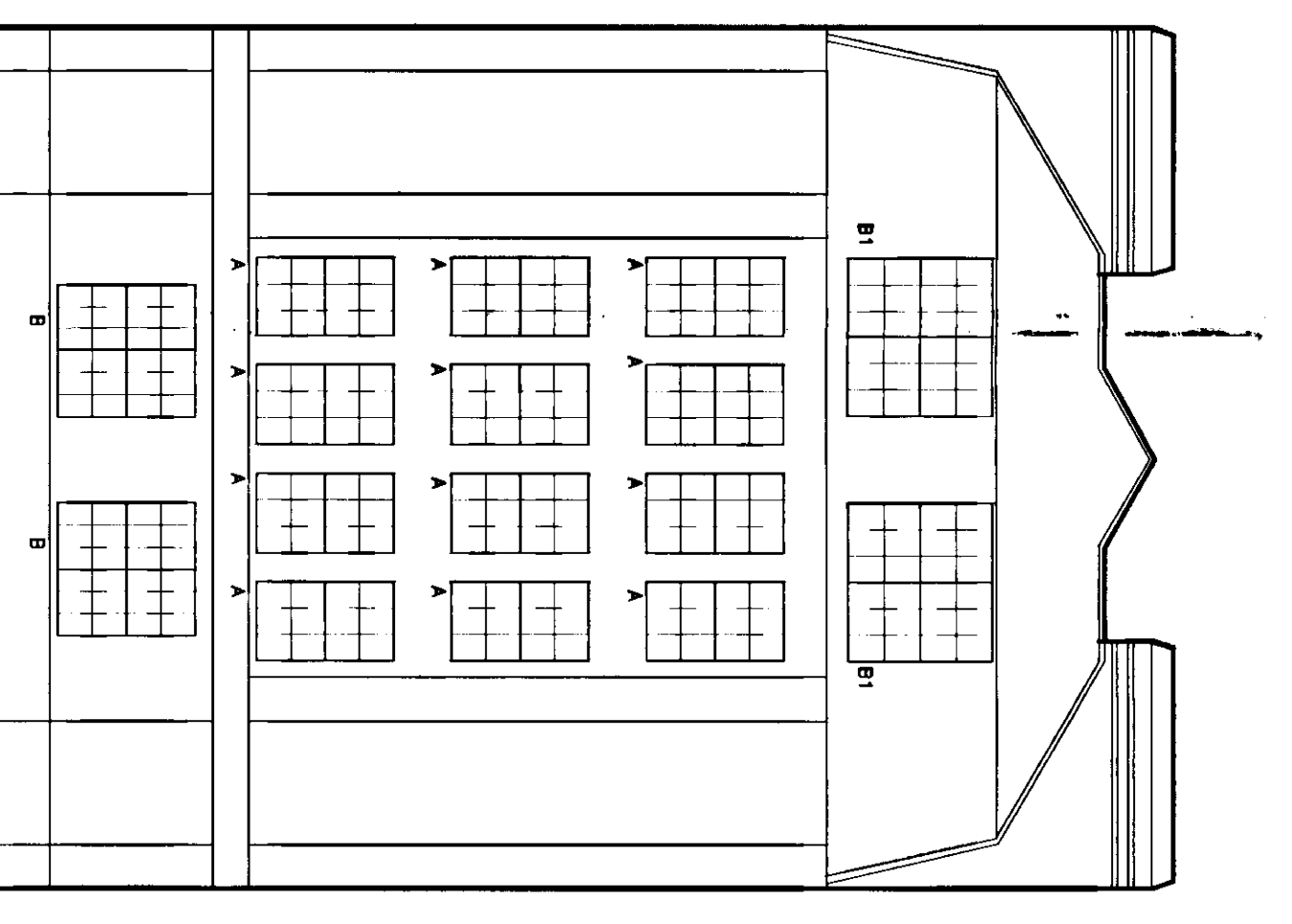
Existing Window Design



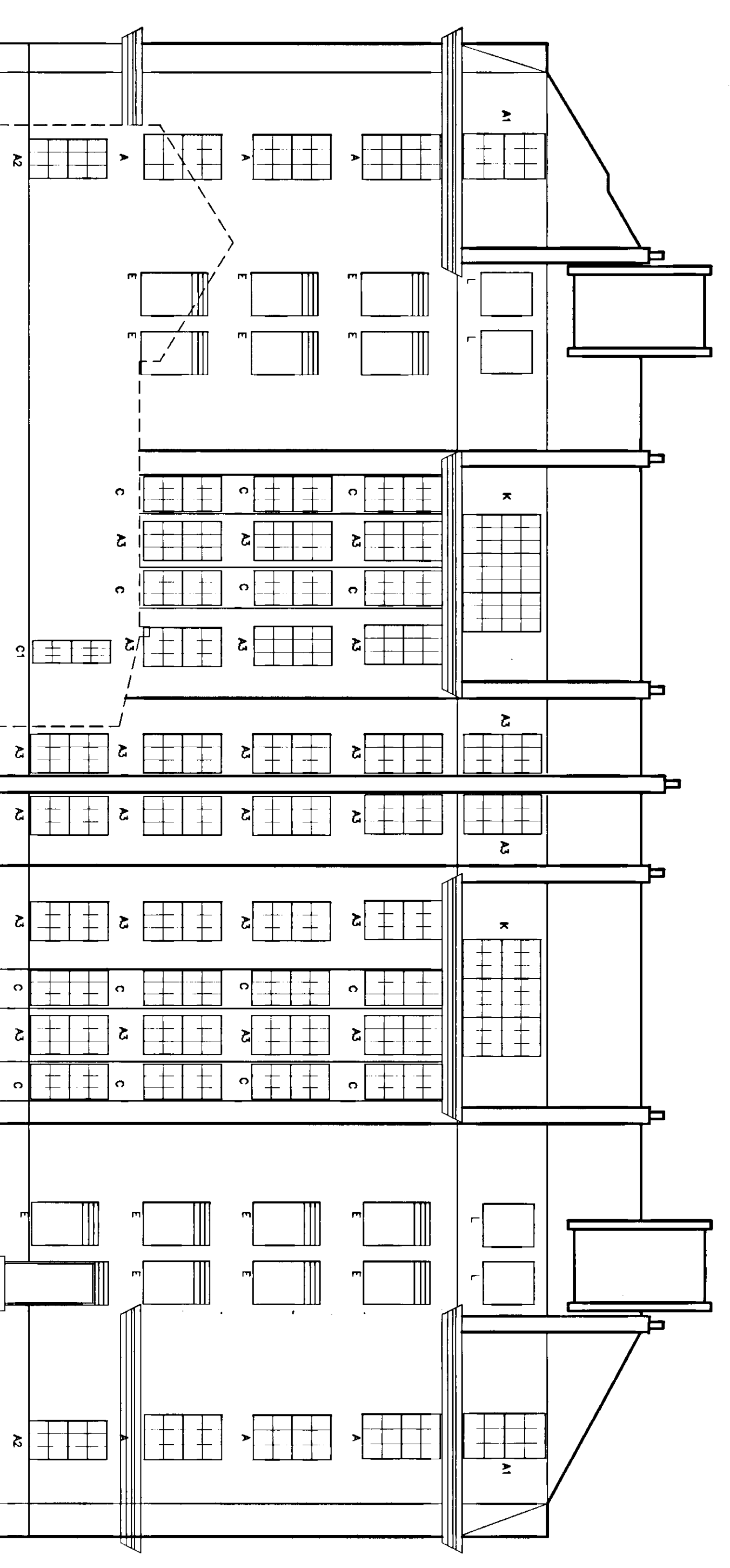
North Elevation



West Elevation



South Elevation



East Elevation



R.E.K. & C.
 TOWN PLANNING
 - 4 JUN 2001
 RECEIVED

PP/01/0260

JOHN PELLING
 PARTNERS
 CHARITABLE
 SURVEYORS

REGISTERED ARCHITECTS
 225, Abchurch Lane, London EC4N 3DF
 Tel: 020 7424 2500
 Fax: 020 7424 2501
 Email: john@pellings.co.uk

Client: William Sutton Trust

201
 The Sutton Estate
 Chelsea, London, SW3

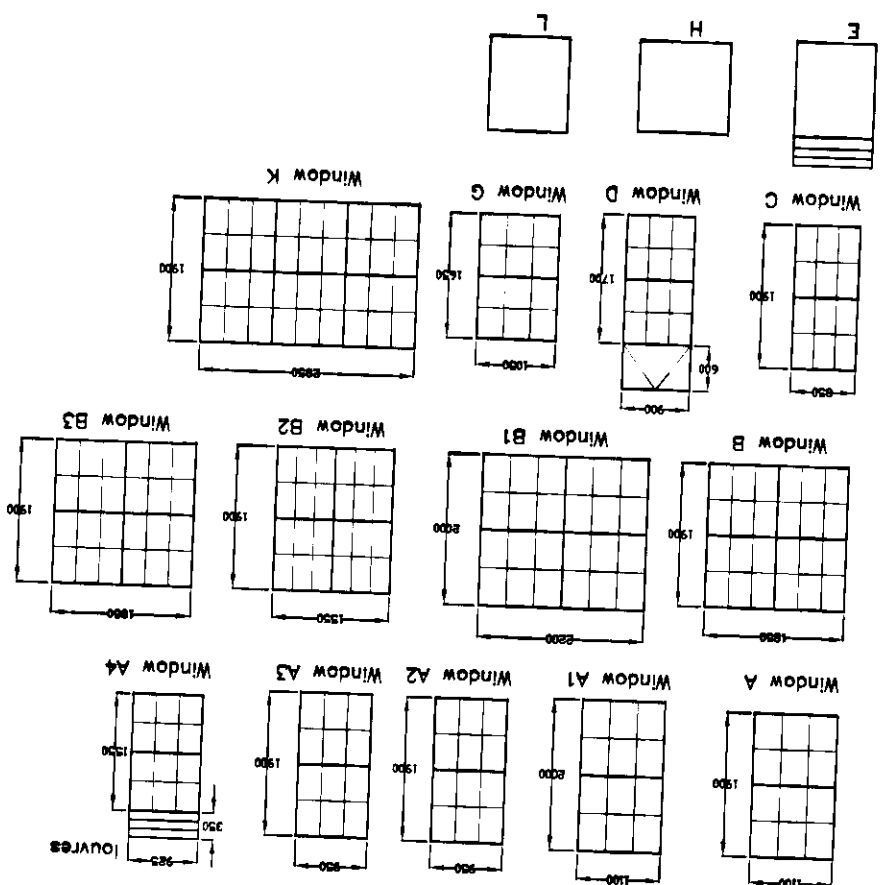
016 mtd Jemingsbury House
 Existing Elevations &
 Window Design

Scale 1:100
 Date Aug 2000
 Drawn BS/CAO

109 5566 9/1

BS7

Existing Window Design

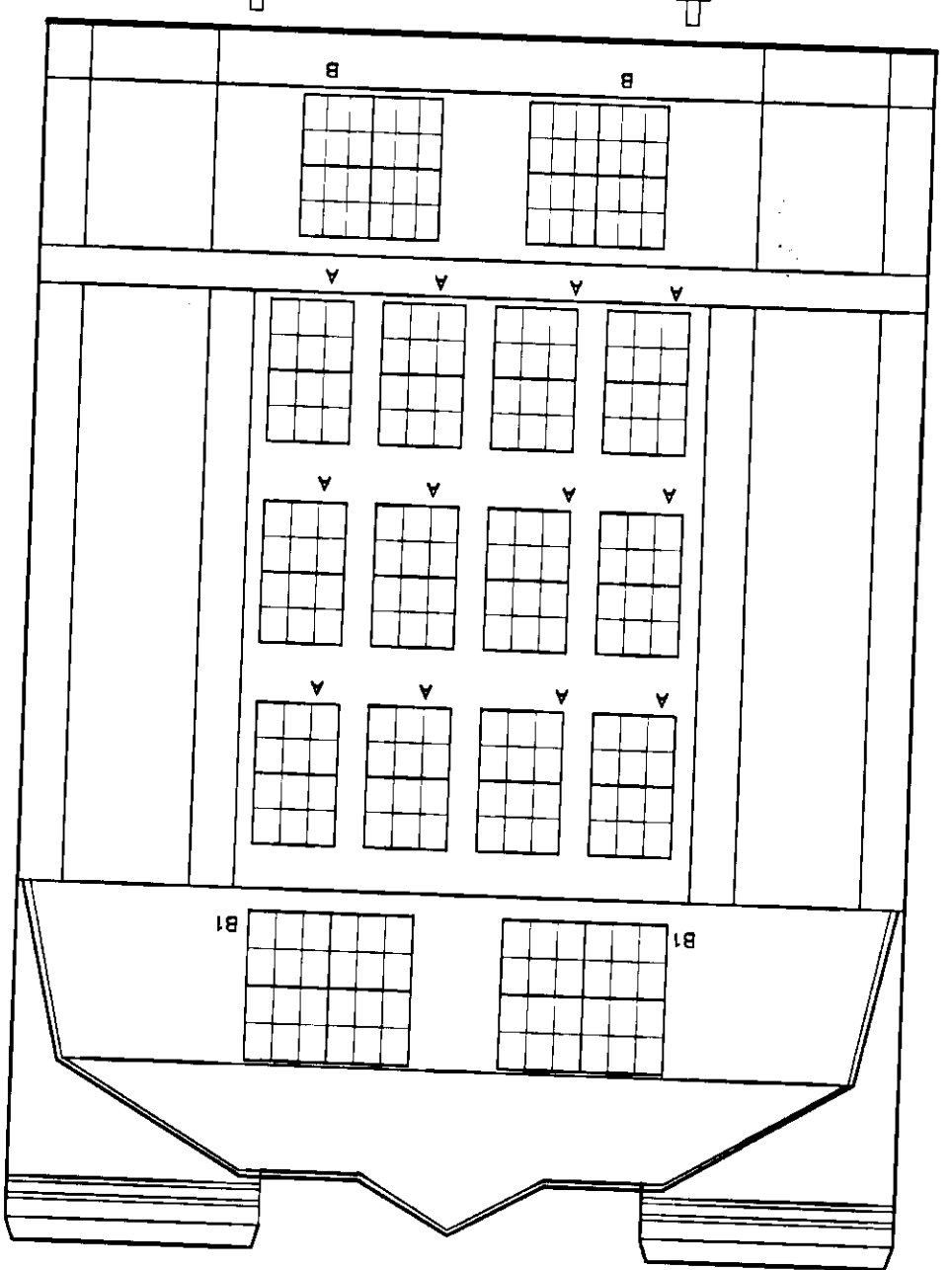


Total = 202 Windows to be replaced

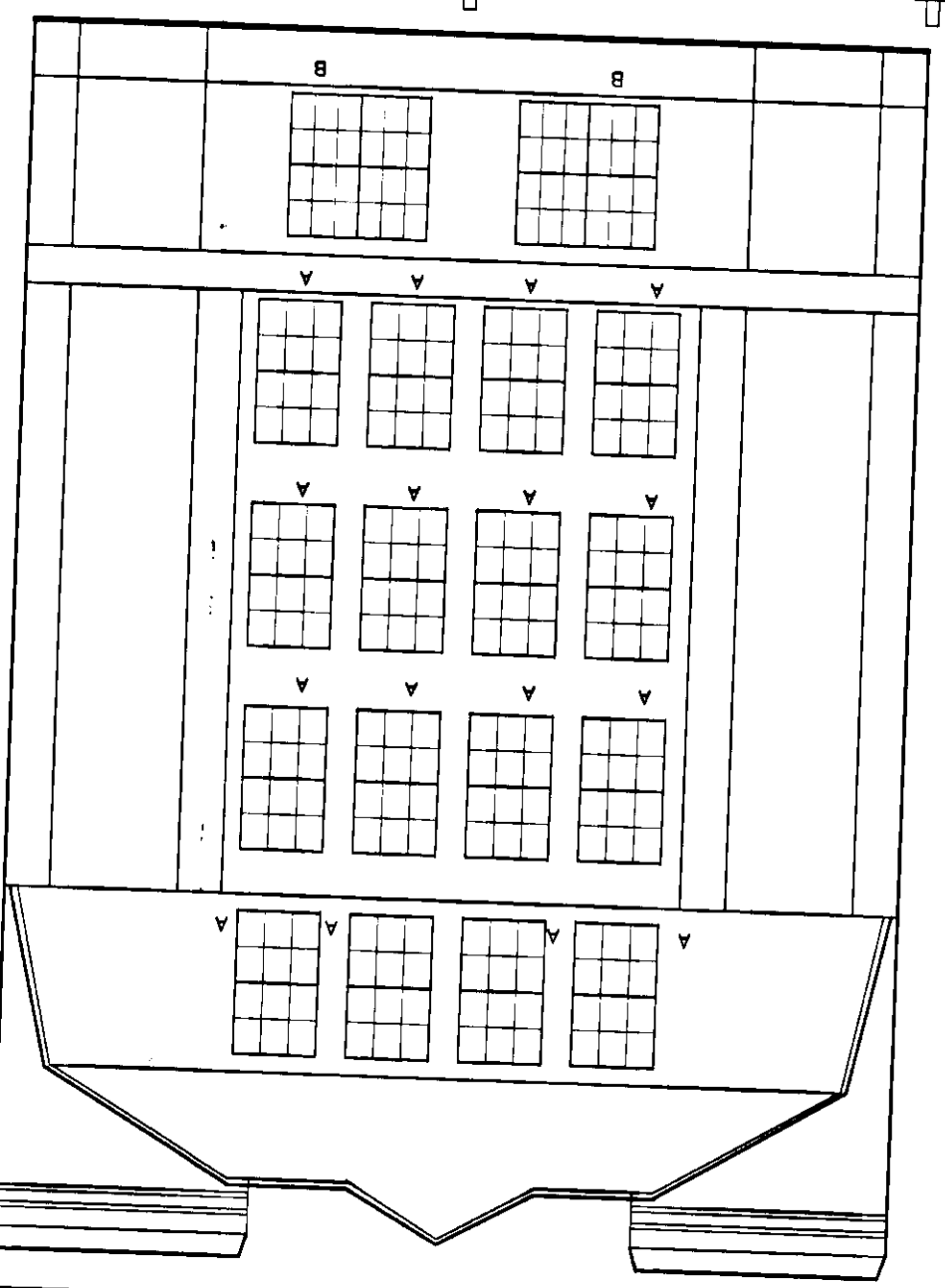
West Elevation



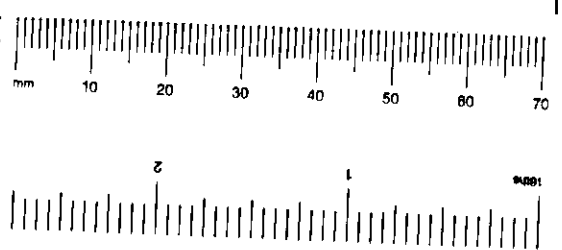
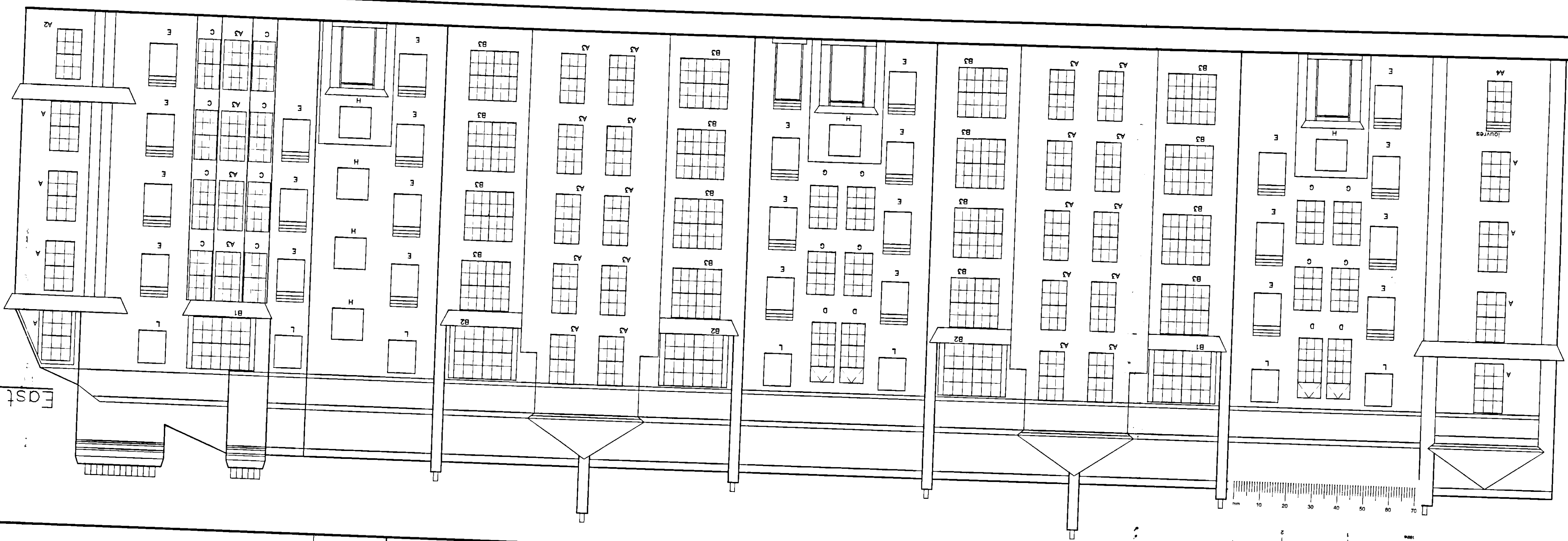
North Elevation



South Elevation



East Elevation



RECEIVED
R.K. & C.
TOWN PLANNING
- 4 JAN 2001

PP010260

JOHN PELLING
PARTNERS
CHARTERED
SURVEYORS

NORTHERN HOUSE MOUNT PLEASANT BARRIS HERRIS AND
TELEPHONE: 020 9441 8000 FAX: 020 9441 4818
E-MAIL: john.pelling@jpp.co.uk

CLIENT William Sutton Trust

JOB The Sutton Estate,
Chelsea, London, SW3

DESIGNER J.M.P. Kingsmill House,
Existing Elevations &
Window Design

SCALE 1:100
DATE Aug 2000
DRAWN BS/CAD

109.566.9/2