

# APPROVED DRAWINGS

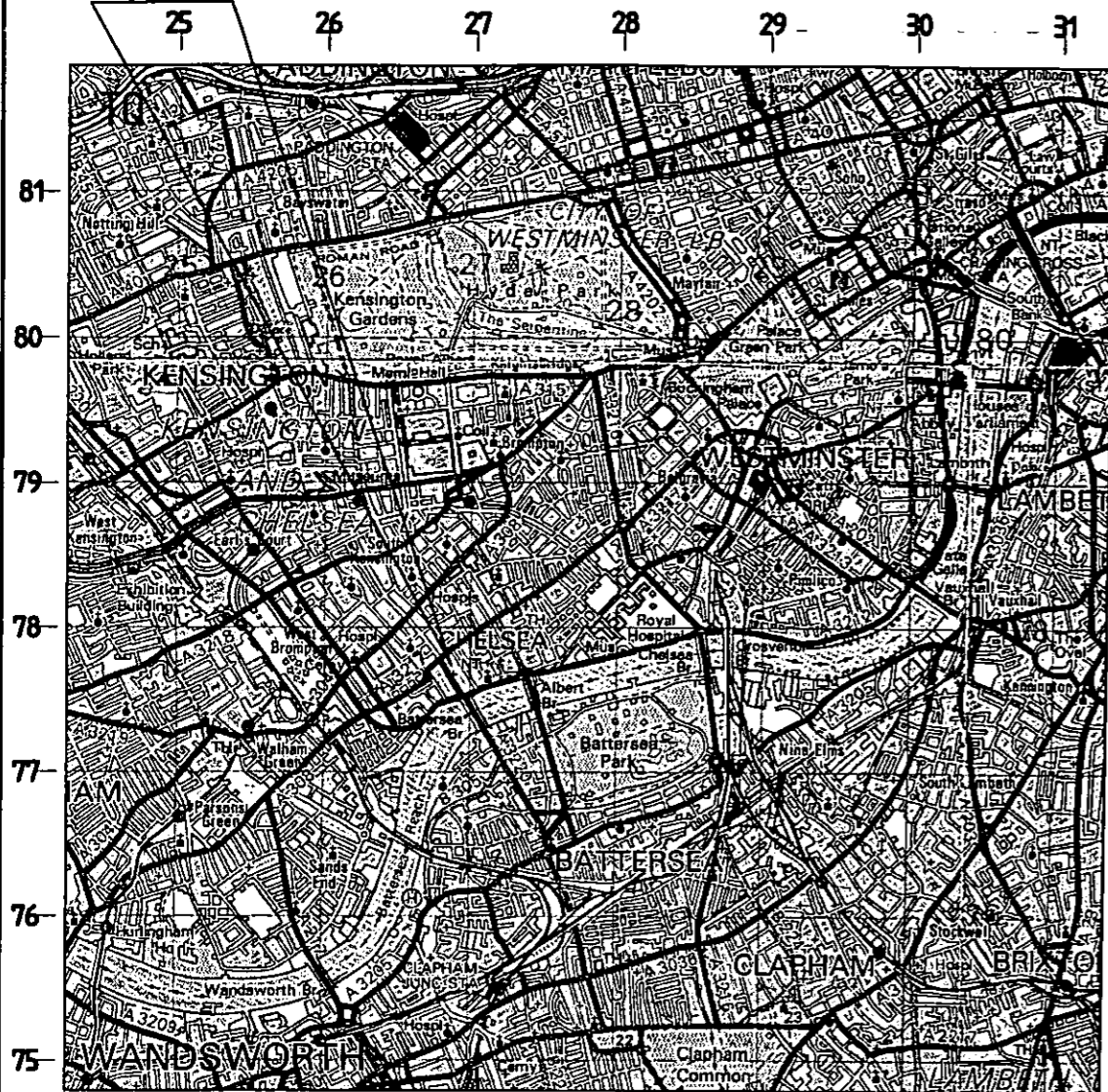
Please Index As

File Number

## APPROVED DRAWINGS

Part	1	Part	11
Part	2	Part	12
Part	3	Part	13
Part	4	Part	14
Part	5	Part	15
Part	6	Part	16
Part	7	Part	17
Part	8	Part	18
Part	9	Part	19
Part	10	Part	20

SITE LOCATION



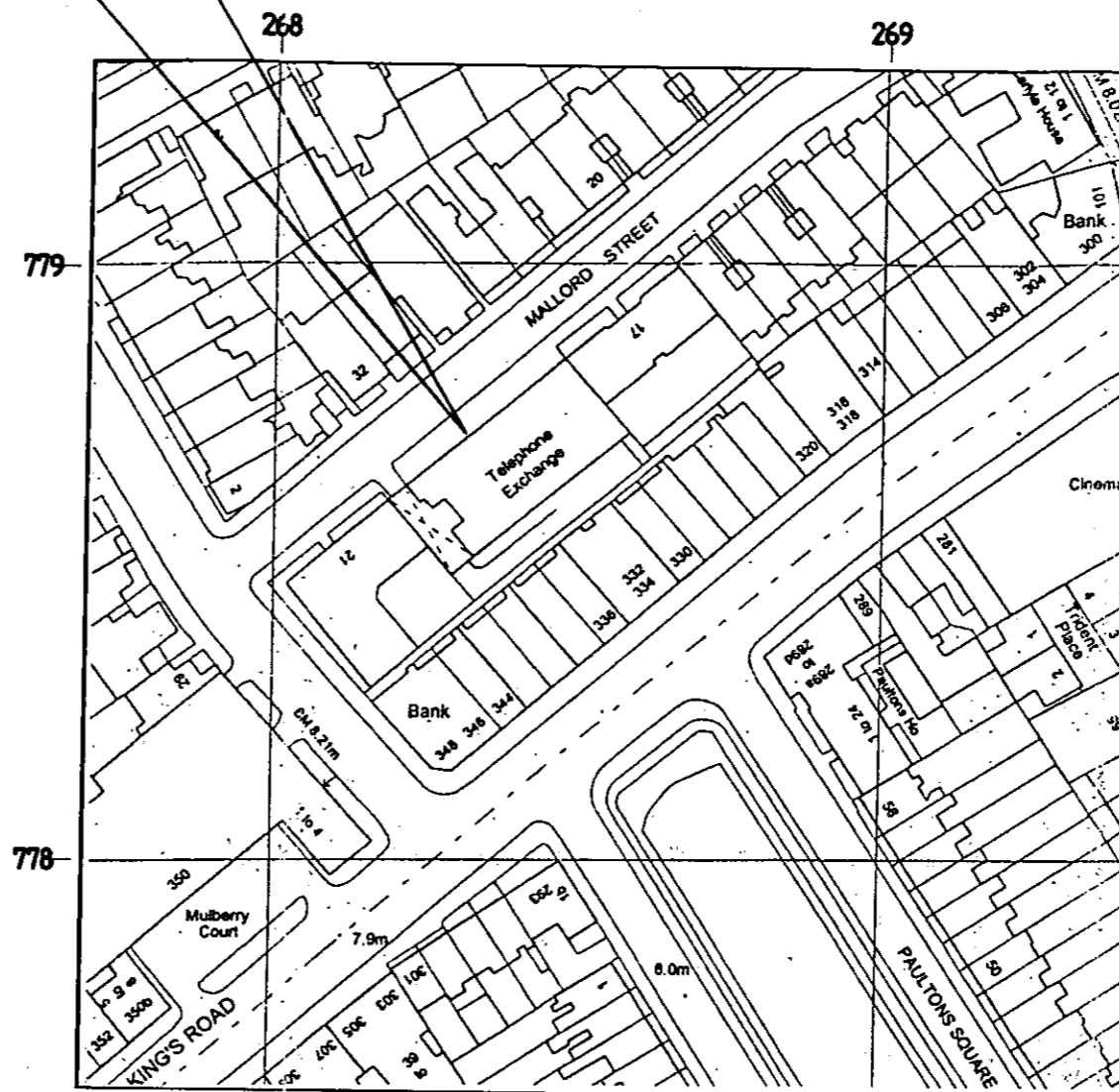
**LOCATION PLAN**

(1:50000)

NATIONAL GRID REFERENCE - 2684 7787 (TQ)

CHELSEA A.T.E.  
MALLORD STREET  
KENSINGTON & CHELSEA  
LONDON  
SW3 6AP

SITE LOCATION



**SITE PLAN**

(1:1250)

**SITE ACCESS**

FROM BATTERSEA BRIDGE HEAD NORTH ALONG BEAUFORT STREET FOR HALF A MILE AND THEN TURN RIGHT INTO KINGS ROAD (A3277). NEXT TAKE THE SECOND LEFT HAND TURN INTO THE VALE AND THEN THE FIRST RIGHT INTO MALLORD STREET. THE EXCHANGE IS LOCATED ON THE RIGHT HAND SIDE. ACCESS TO THE EQUIPMENT CABINETS AND ANTENNAS IS VIA THE LIFT TO THE THIRD FLOOR LEVEL THENCE VIA HATCHWAY (LADDER PROVIDED) INTO THE PLANT ROOM WHICH GIVES ACCESS ONTO THE ROOF.

U.S. MAPS REPRODUCED WITH THE KIND PERMISSION OF HER MAJESTYS STATIONERY OFFICE UNDER RCL LICENCE No. AL850578

Received 13 AUG 2001 R.B.K&C

Planning: Allocation

PP/01/1614/A

**REUSED**

This drawing is to be read in conjunction with drawing Nos. M22025/102/103/104/105 and all other relevant drawings and documents

**ROSCOE CAPITA LIMITED**

Consulting Civil, Structural and Geotechnical Engineers.  
Hille House  
132 St. Albans Road  
Watford  
Hertfordshire  
WD24 4AA  
Telephone No. 01923-817537  
Facsimile No. 01923-228516  
E-mail rcl-watford@roscoe.co.uk  
Web www.roscoe.co.uk

Drawing title:

**LOCATION AND SITE PLANS**

DO NOT SCALE

SCALE	AS SHOWN	DATE	31.07.2001
-------	----------	------	------------

DRAWN BY	RTP	PROJECT ENGINEER	B Bahra
----------	-----	------------------	---------

CHECKED BY		APPROVED	<i>[Signature]</i>
------------	--	----------	--------------------

FOR COMMENT	APPROVED	CONSTRUCTION	AS BUILT
-------------	----------	--------------	----------

CONTRACT No	M22025	DRG No	101	REV	-
-------------	--------	--------	-----	-----	---

Site address:

CHELSEA A.T.E.  
MALLORD STREET  
KENSINGTON & CHELSEA  
LONDON  
SW3 6AP

REV DATE NAME REVISION

CHKD REV DATE NAME REVISION

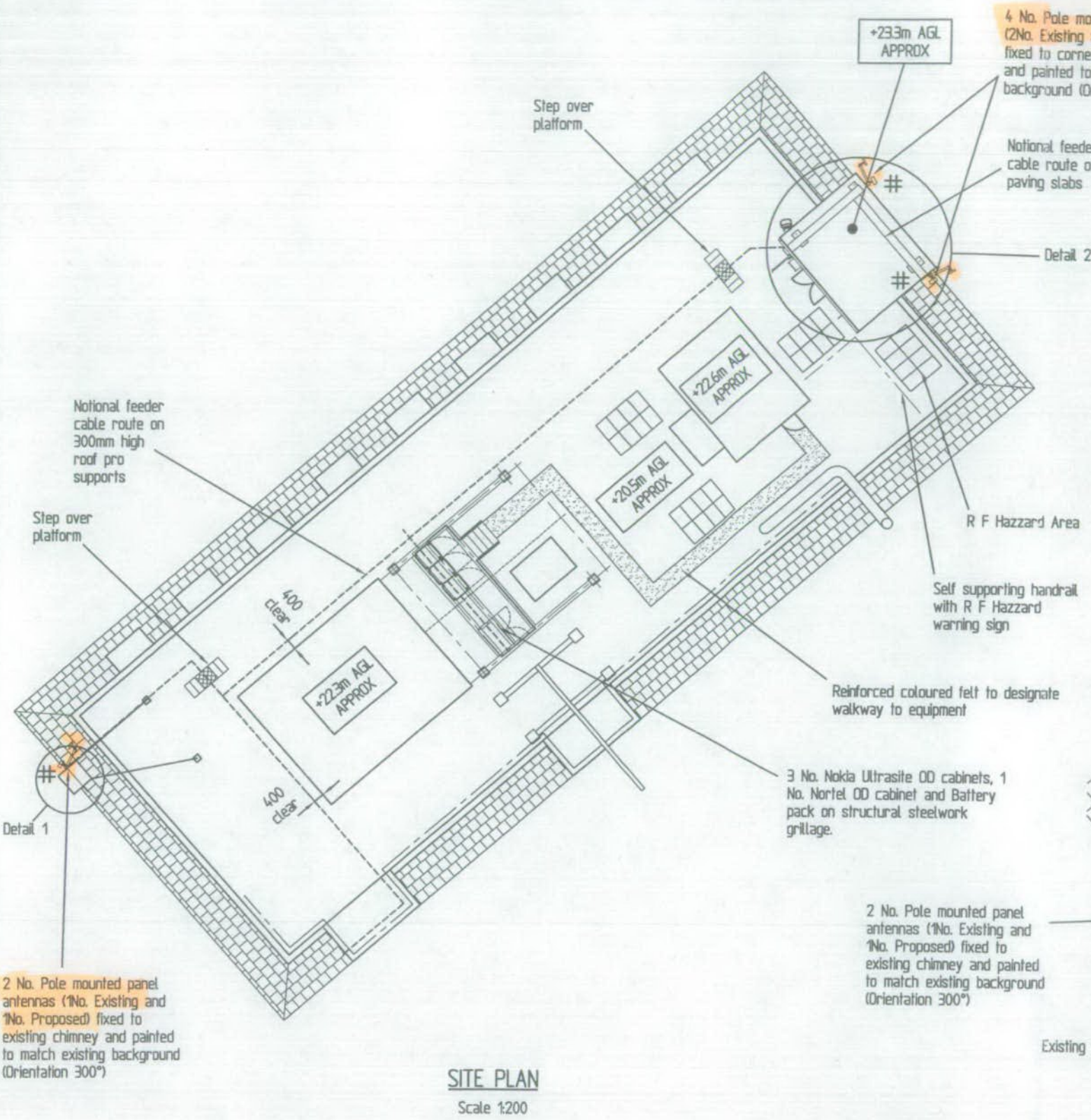
CHKD REV DATE NAME REVISION

CHKD

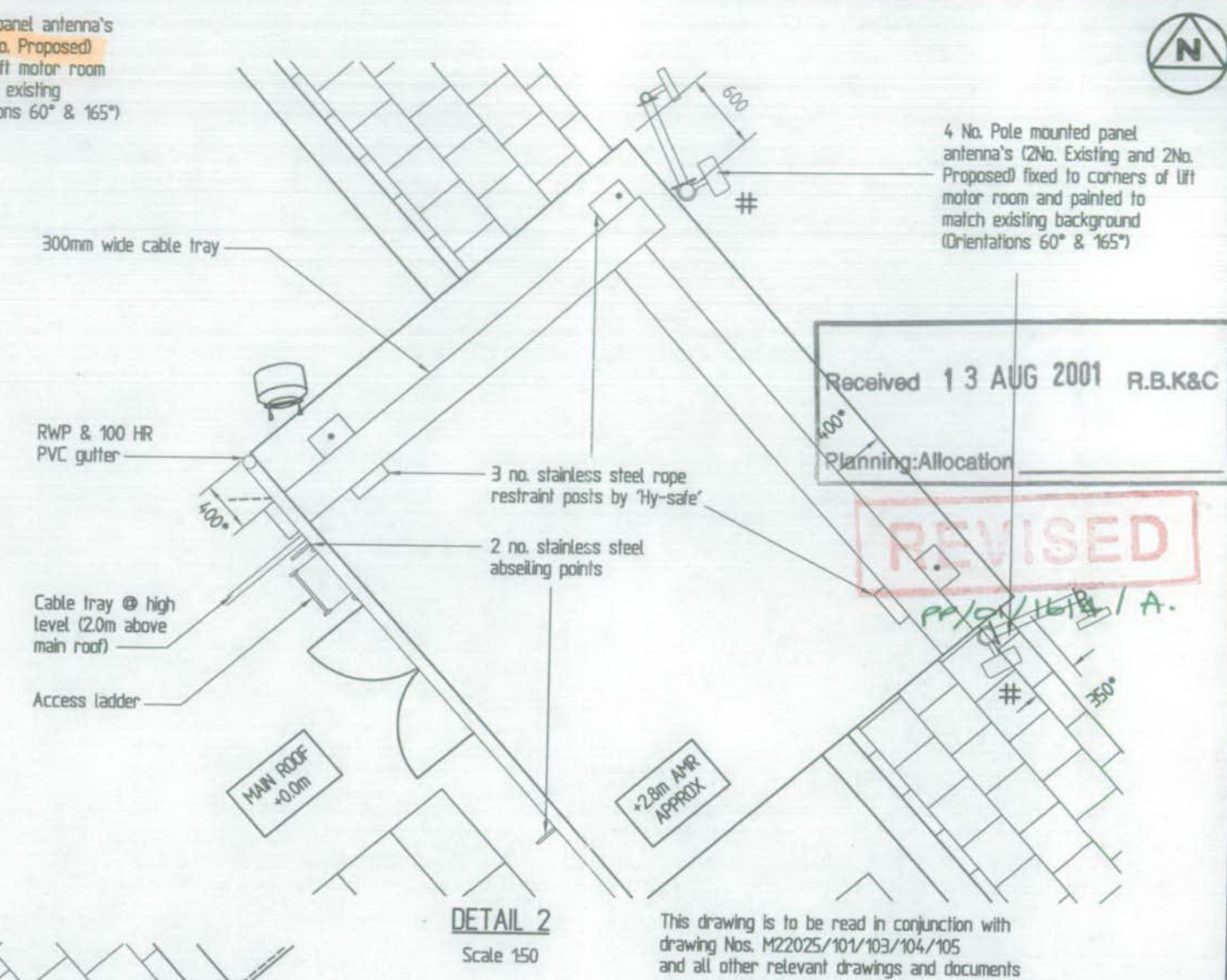
**BTcellnet**

**CHELSEA A.T.E. (UPGRADE)**

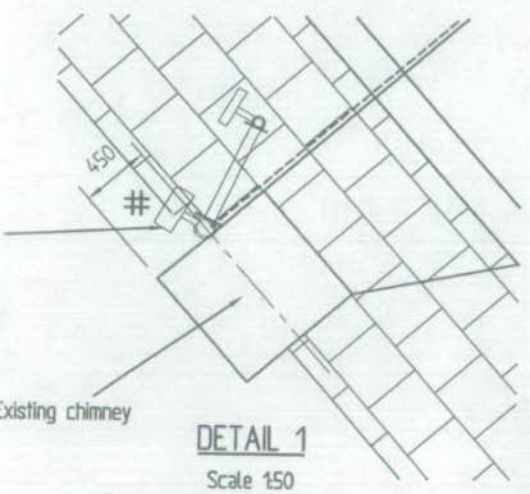
**CELL No. 9051 U**



**SITE PLAN**  
Scale 1200



**DETAIL 2**  
Scale 150



**DETAIL 1**  
Scale 150

Received 13 AUG 2001 R.B.K&C  
Planning: Allocation

**REVISED**

This drawing is to be read in conjunction with drawing Nos. M22025/101/103/104/105 and all other relevant drawings and documents

**ROSCOE CAPITA LIMITED**  
Consulting Civil, Structural and Geotechnical Engineers.  
Hille House  
132 St. Albans Road  
Watford  
Hertfordshire  
WD24 4AA  
Telephone No. 01923-817537  
Facsimile No. 01923-228516  
E-mail rcl-watford@roscoe.co.uk  
Web www.roscoe.co.uk

Drawing title:  
**PROPOSED ROOF PLAN**

<b>DO NOT SCALE</b>			
SCALE	AS SHOWN	DATE	31.07.2001
DRAWN BY	RTP	PROJECT ENGINEER	B Bahra
CHECKED BY		APPROVED	<i>[Signature]</i>
FOR COMMENT	APPROVED	CONSTRUCTION	AS BUILT

Site address:  
CHELSEA A.T.E.  
MALLORD STREET  
KENSINGTON & CHELSEA  
LONDON SW3 6AP

REV	DATE	NAME	REVISION	CHKD	REV	DATE	NAME	REVISION	CHKD	REV	DATE	NAME	REVISION	CHKD



**CHELSEA A.T.E. UPGRADE**

**CELL No. 9051 U**

CONTRACT No	DRG No	REV
<b>M22025</b>	<b>102</b>	<b>-</b>