

APPROVED DRAWINGS

Please Index As

File Number

APPROVED DRAWINGS

Part	1	Part	11
Part	2	Part	12
Part	3	Part	13
Part	4	Part	14
Part	5	Part	15
Part	6	Part	16
Part	7	Part	17
Part	8	Part	18
Part	9	Part	19
Part	10	Part	20

DELEGATED APPROVAL
- 7 AUG 2001

R.B.K. & C.
TOWN PLANNING
27 JUN 2001
RECEIVED

OFFICE COPY

DRAWING SHOWS DESIGN INTENT ONLY
AND IS NOT TO BE SCALED FROM.
SUPPLIER AND MANUFACTURER DRAWINGS
TO BE PRODUCED AND APPROVED
BY ASTOUND PRIOR TO PRODUCTION

astound

first floor
estate house
red lion square
sp: wandsworth high street
London SW18 4LS
tel 020 8871 9000
fax 020 8870 0019
isdh 020 8871 0158
email studio@astoundingltd.co.uk

client:
TESCO

project title:
KENSINGTON REFIT

drawing title: **CAR PARK ENTRANCE** job number: **1164**

drawing number: **1164/02A** revision:

date: **MARCH 2001** scale:

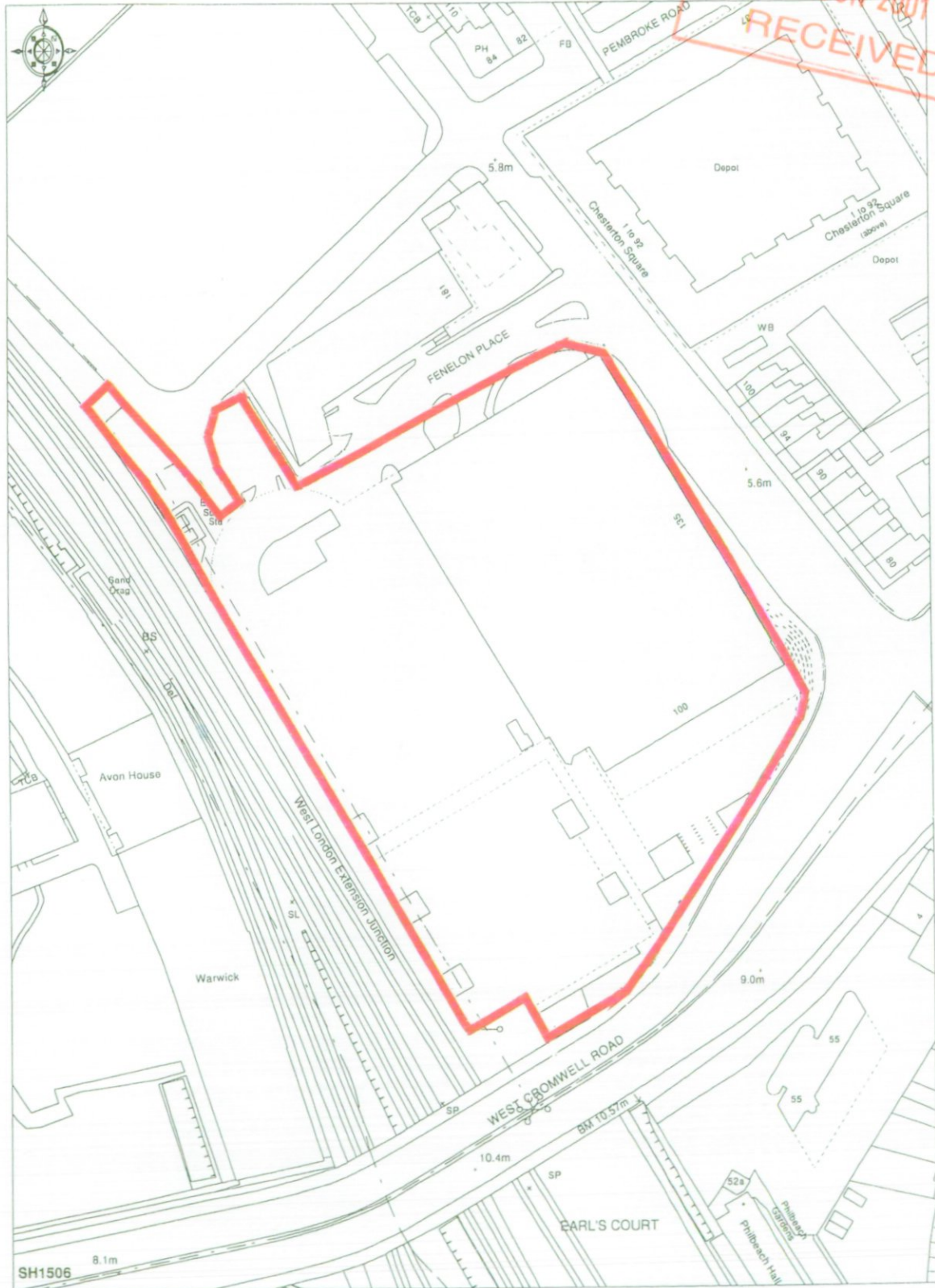
designer: **PC** CA011445

No alterations to design specification may be made without prior consent of Astound. Do not scale from this drawing. Verify all dimensions on site before commencing work. If in doubt, ask. All dimensions in mm.
© Astound



LAND AT WEST CROMWELL ROAD/WARWICK ROAD
LONDON W14

R.B.K. & C.
TOWN PLANNING
27 JUN 2001
RECEIVED



© Crown copyright 2000 All rights reserved. Based on Ordnance Survey digital data Survey Scale - 1:1250 Plotted Scale - 1:1500
(Scales other than at Survey Scale should not be used for accurate measurement). Business occupancy data ©2000 Thomson Directories Ltd.



This plan is published for convenience of identification.
Any site boundaries shown are indicative only and
should be checked against Title Deeds.

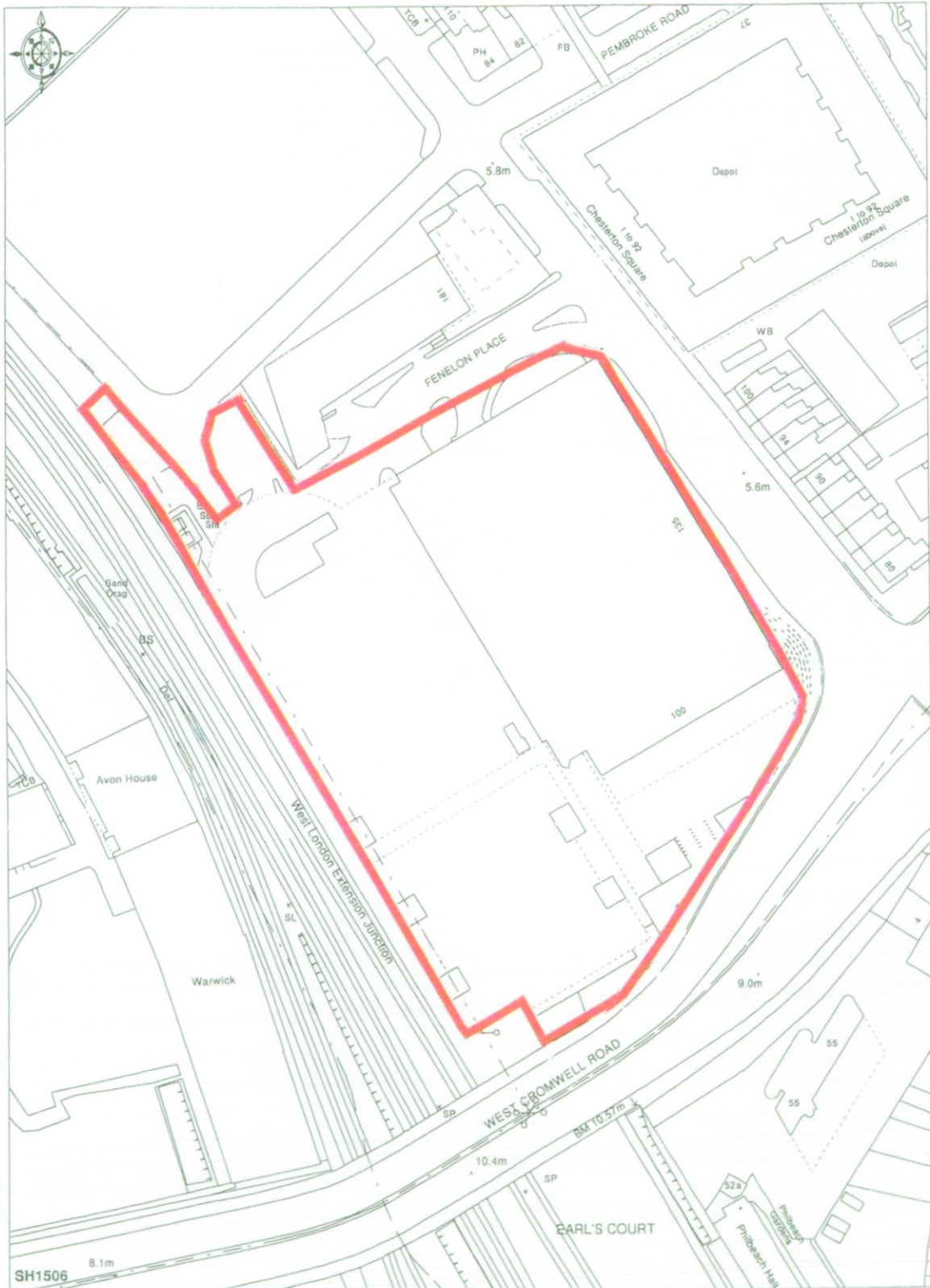
HEALEY & BAKER
020 7629 9292

29 St. George Street Hanover Square London W1A 3BG

GA011445

LAND AT WEST CROMWELL ROAD/WARWICK ROAD
LONDON W14

CA011445



© Crown copyright 2000 All rights reserved. Based on Ordnance Survey digital data Survey Scale - 1:1250 Plotted Scale - 1:1500
(Scales other than at Survey Scale should not be used for accurate measurement). Business occupancy data ©2000 Thomson Directories Ltd.



Ordnance Survey
Value Added Reseller

This plan is published for convenience of identification.
Any site boundaries shown are indicative only and
should be checked against Title Deeds.



HEALEY & BAKER
020 7629 9292

29 St. George Street Hanover Square London W1A 3BG

VISUAL



R.B.K. & C.
TOWN PLANNING
 27 JUN 2001
RECEIVED

OFFICE COPY

DRAWING SHOWS DESIGN INTENT ONLY
 AND IS NOT TO BE SCALED FROM.
 SUPPLIER AND MANUFACTURER DRAWINGS
 TO BE PRODUCED AND APPROVED
 BY ASTOUND PRIOR TO PRODUCTION

astound

first floor:
 155-157 High Street
 1st floor square
 19, Wandsworth High Street
 London SW18 2LS
 tel 020 8871 9000
 fax 020 8870 0050
 tdn 020 8871 9000
 email studio@astoundgroup.com

client:
TESCO

project title:
KENSINGTON REFIT

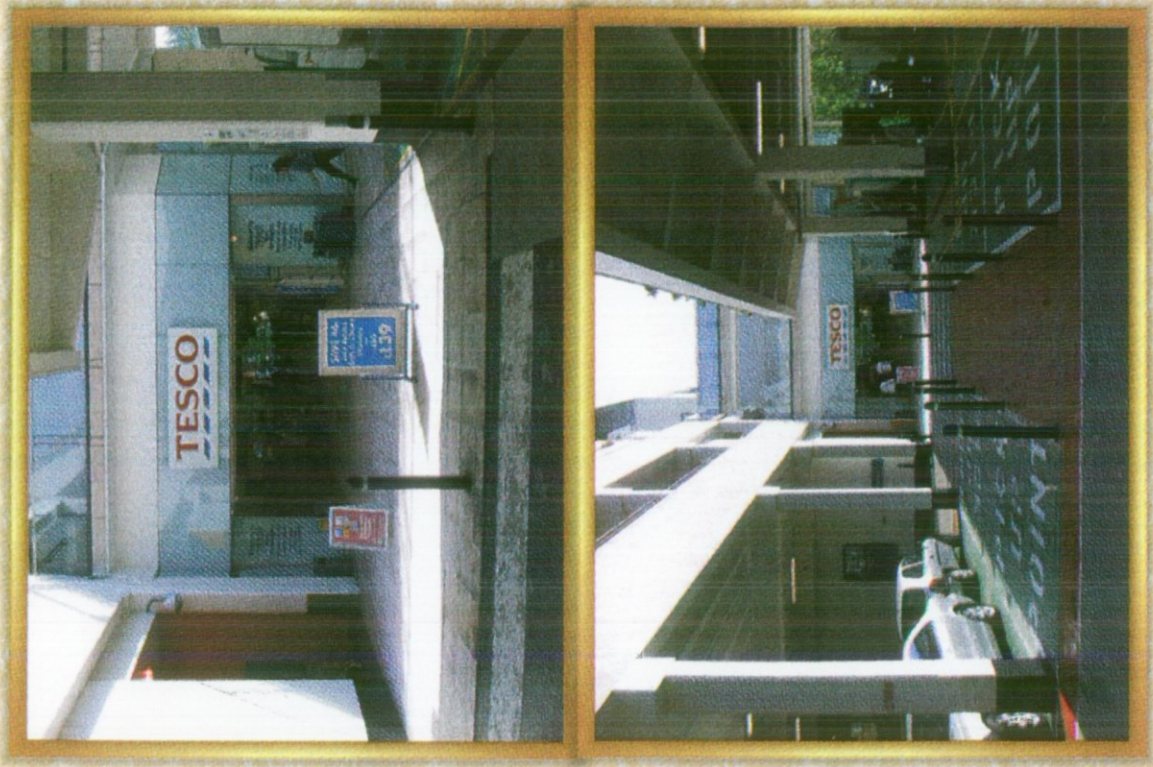
drawing title: job number:
CAR PARK ENTRANCE 1164

drawing number: version:
 1164 / 02A 1

date: scale:
MARCH 2001 1:10

designer: GA011445
PC

No alterations to design specification may be made
 without prior consent of Astound. Do not scale from
 this drawing. Verify all dimensions before commencing
 work. If in doubt, call. All dimensions in mm.
 © astound



GAUT 1445



R.B.K. & C.
TOWN PLANNING
27 JUN 2001
RECEIVED