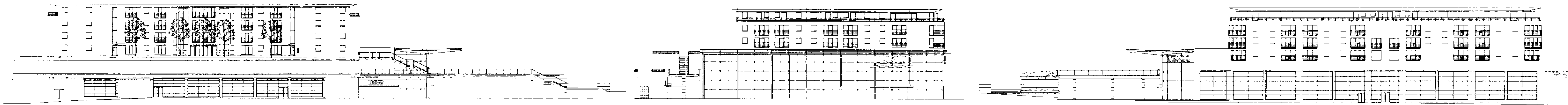
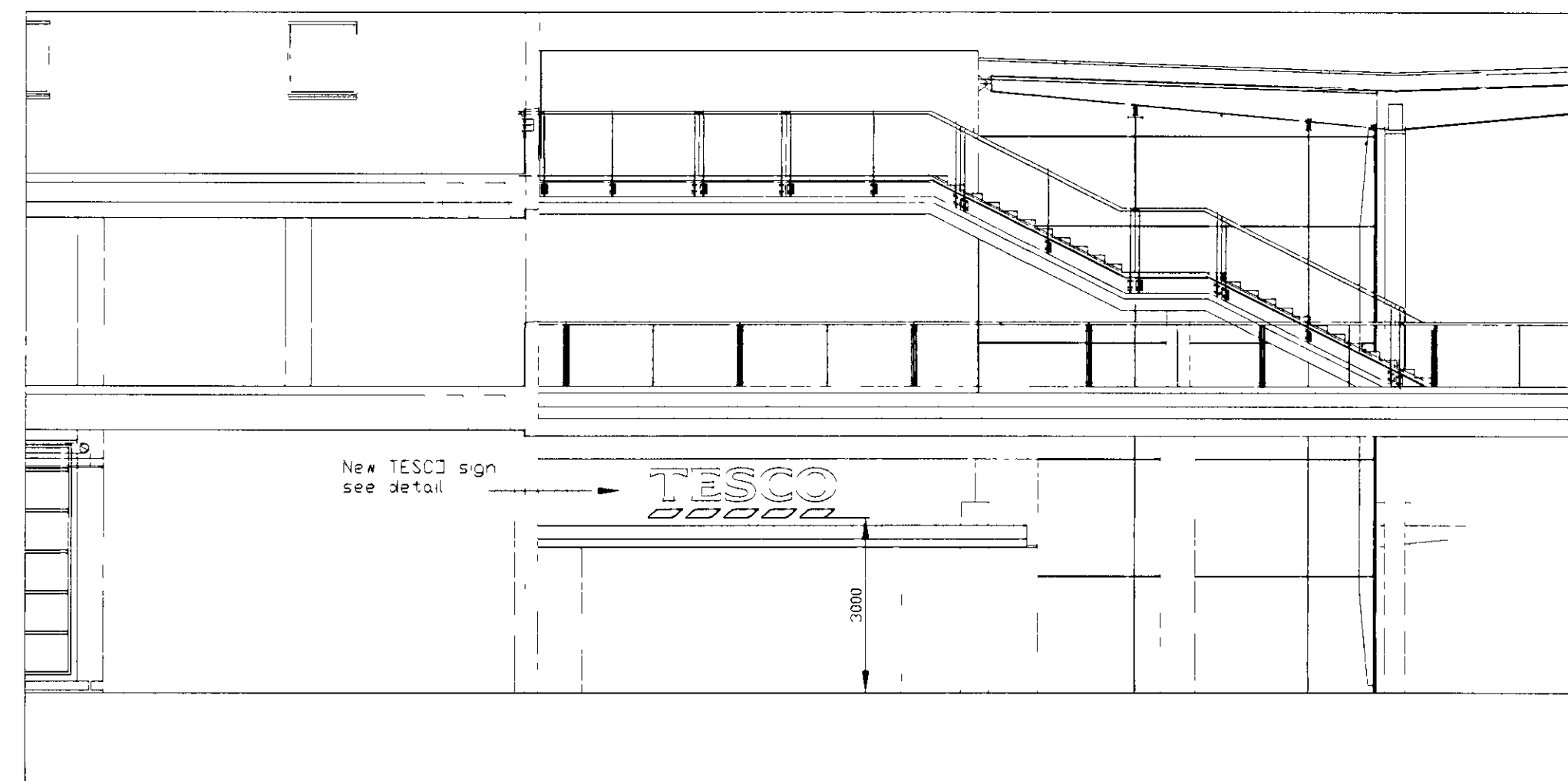


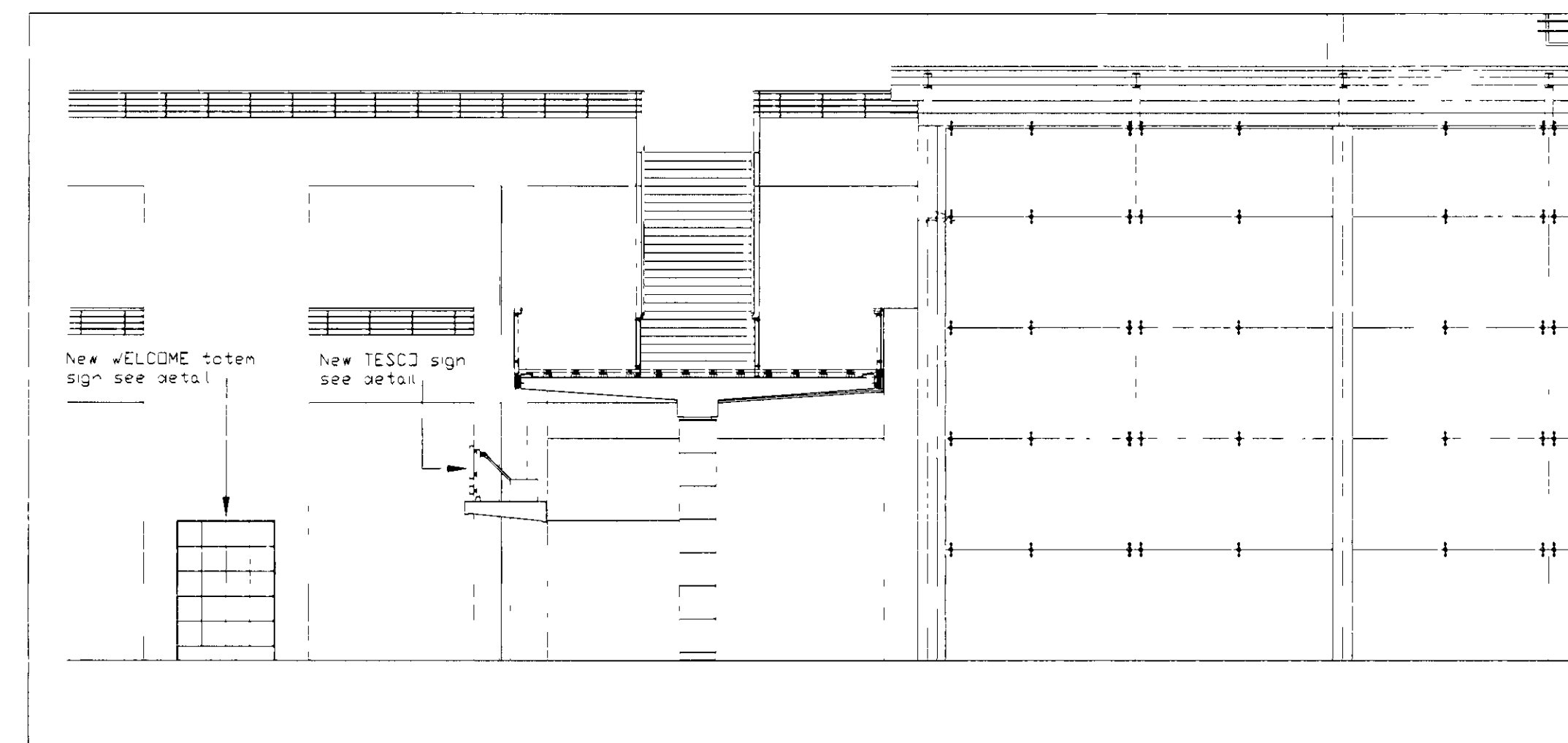
FOR ADVERTISEMENT PURPOSES



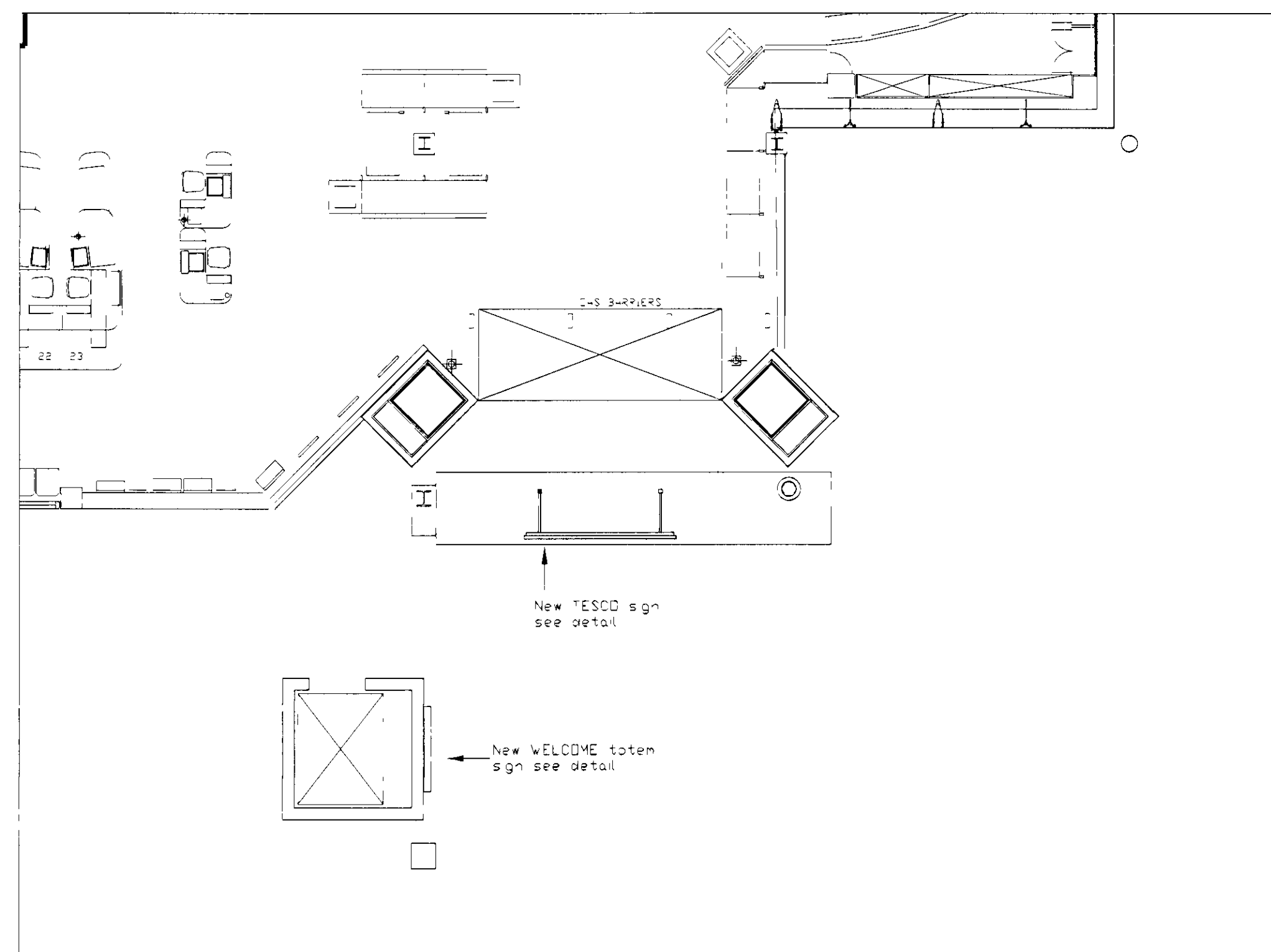
ELEVATIONS TO THE CUSTOMER CARPARK, CROMWELL ROAD (PLAZA) & WARWICK ROAD 1:500



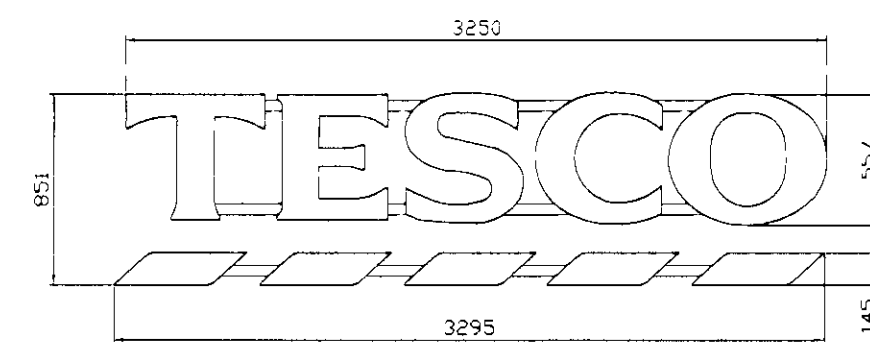
PART ELEVATION CARPARK 1:100



PART ELEVATION CROMWELL ROAD 1:100

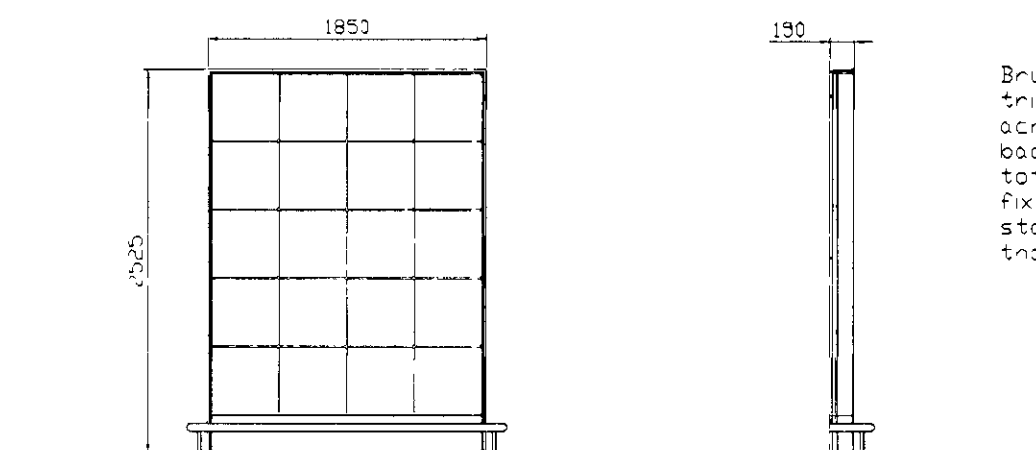


PART PLAN AT CANOPY LEVEL MAIN ENTRANCE/EXIT TO CUSTOMER CARPARK 1:100



SIGN DETAILS NTS

Individual built-up 3D lettering and a sign fixed on to finished support using colour-coded fixings for external and blue for outdoors, static internal illumination, neon tubing not exceeding 1200 cd/m²



TOTEM SIGN ELEVATION 1:50

Brushed stainless steel sign/ frame, 5mm thick acrylic face front and back, 50mm crash roll, totem to be security fixed to the wall internal static illumination less than 1200 cd per m²



SITE LOCATION PLAN 1:2000



A 20 06 01 Wall mounted Totem added RAS
Revision

Description

REFIT & ALTERATIONS
TO TESCO STORE
WARWICK ROAD
KENSINGTON

ELEVATIONS & PLANS AS PROPOSED
SIGNAGE TO MAIN ENTRANCE

Client



bmd ARCHITECTS
1 WINCHESTER SQUARE
LONDON SE1 9AP
Tel: 020 7357 6885 Fax: 020 7357 6887 E-Mail: bmd_arch@compuserve.com

Drawing Number: 1643/P/04
Rev: A

Scale: 1:500/100	Date: June 2001	Drawn By: RAS
CAD file name: J:\DATA\ACAD\1643\P\04	Checked By:	

© bmd ARCHITECTS 2001