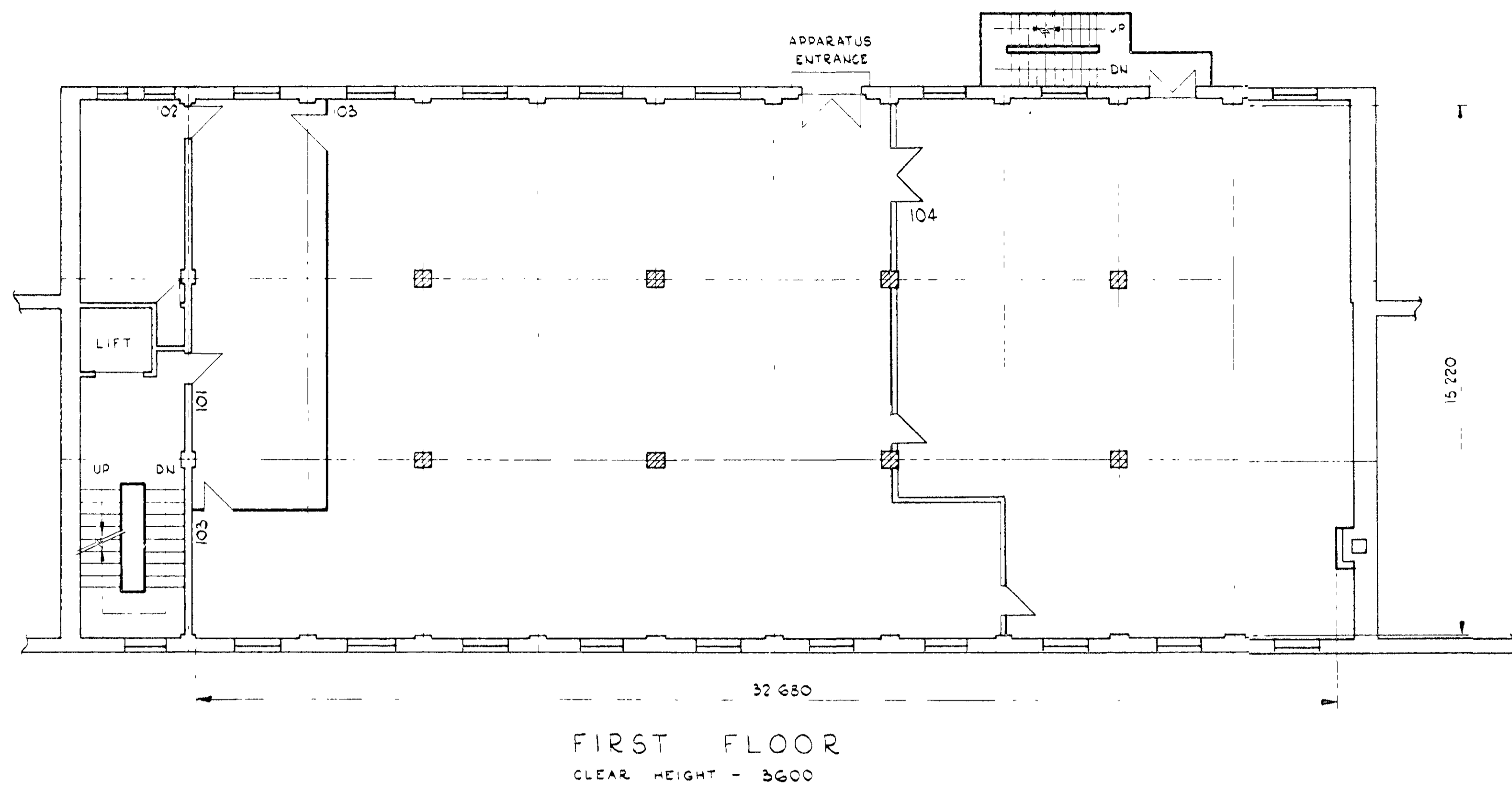


ORIGINAL FRAME SIZE 354 x 601 mm

SCANNED



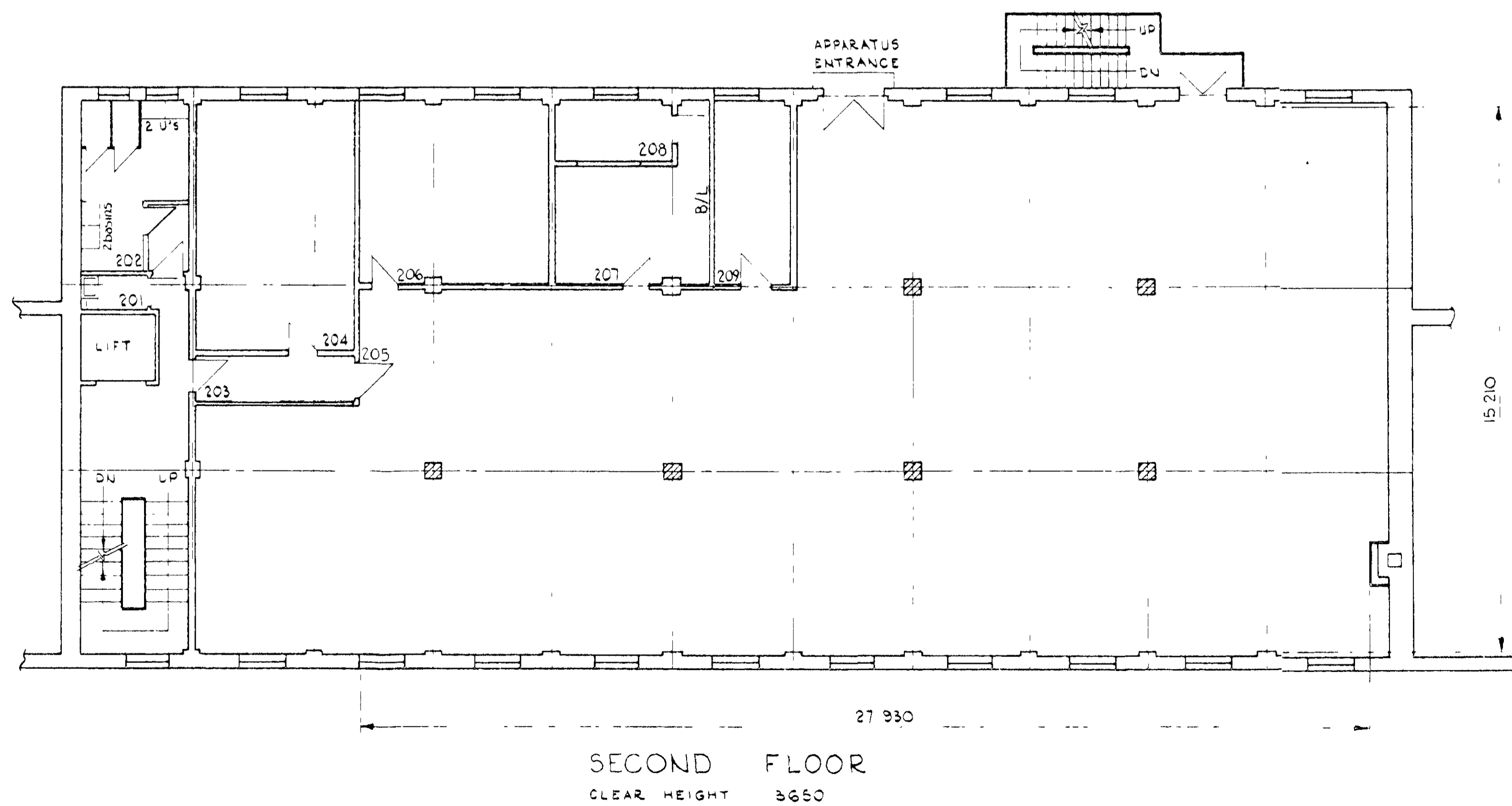
FIRST FLOOR
CLEAR HEIGHT = 3600

ROOM SCHEDULE		AREA (SQ M)
101	TEST ROOM	42.3
102	NORMAL STOCK	7.9
103	APPARATUS ROOM	275.2
104	TXD AREA	186.7

G.I.F.A = 554.4 M²
COMMON AREA = 34.5 M²

BUILDING MASTER PLAN AMENDMENTS	IN'L	DATE	SUFF
MODIFIED TO RHQ INSTR	SC	25-1-77	2
AMENDED FROM SURVEY (EMIS)	SC	13-2-84	3
AMENDED FROM SURVEY	SC	30-5-86	4
SURVEYED	KC	22-4-88	5
SURVEYED & AMENDED	AtJ	23-5-91	6
SURVEYED	KC	20-8-92	7

RECEIVED
- 2 JUL 2001



SECOND FLOOR
CLEAR HEIGHT = 3650

ROOM SCHEDULE		AREA (SQ M)
201	CLEANERS STORE	1.7
202	MALE TOILET	* 15.3
203	CORRIDOR	* 5.9
204	LOCKER ROOM	30.4
205	APPARATUS	408.0
206	METER ROOM	27.1
207	FAN ROOM	16.0
208	FILTER ROOM	5.5
209	APPARATUS REPAIR	11.0

G.I.F.A = 554.4 M²
COMMON AREA = 56.4 M²

PP/01460

DELEGATED APPROVAL
27 JUL 2001

FIRST & SECOND FLOORS

ALL DIMENSIONS ARE IN MILLIMETRES

SCALE 1:100



© POST OFFICE

APPROVED	CHELSEA (352) MALLORD ST, LONDON, SW3 6AP
DRN	
CKD	
ISSUED FROM A 2721	AMENDMENT D-11
POST OFFICE TELEPHONES	
LT REGION SOUTH CENTRAL AREA	
FIRST & SECOND FLOOR	