

Existing sign

Existing readograph on Farmer Street elevation

Cafe - separate demise

Existing poster frames fixed to walls

Existing illuminated poster boxes located behind shopfront glazing

Nightclub entrance - separate demise

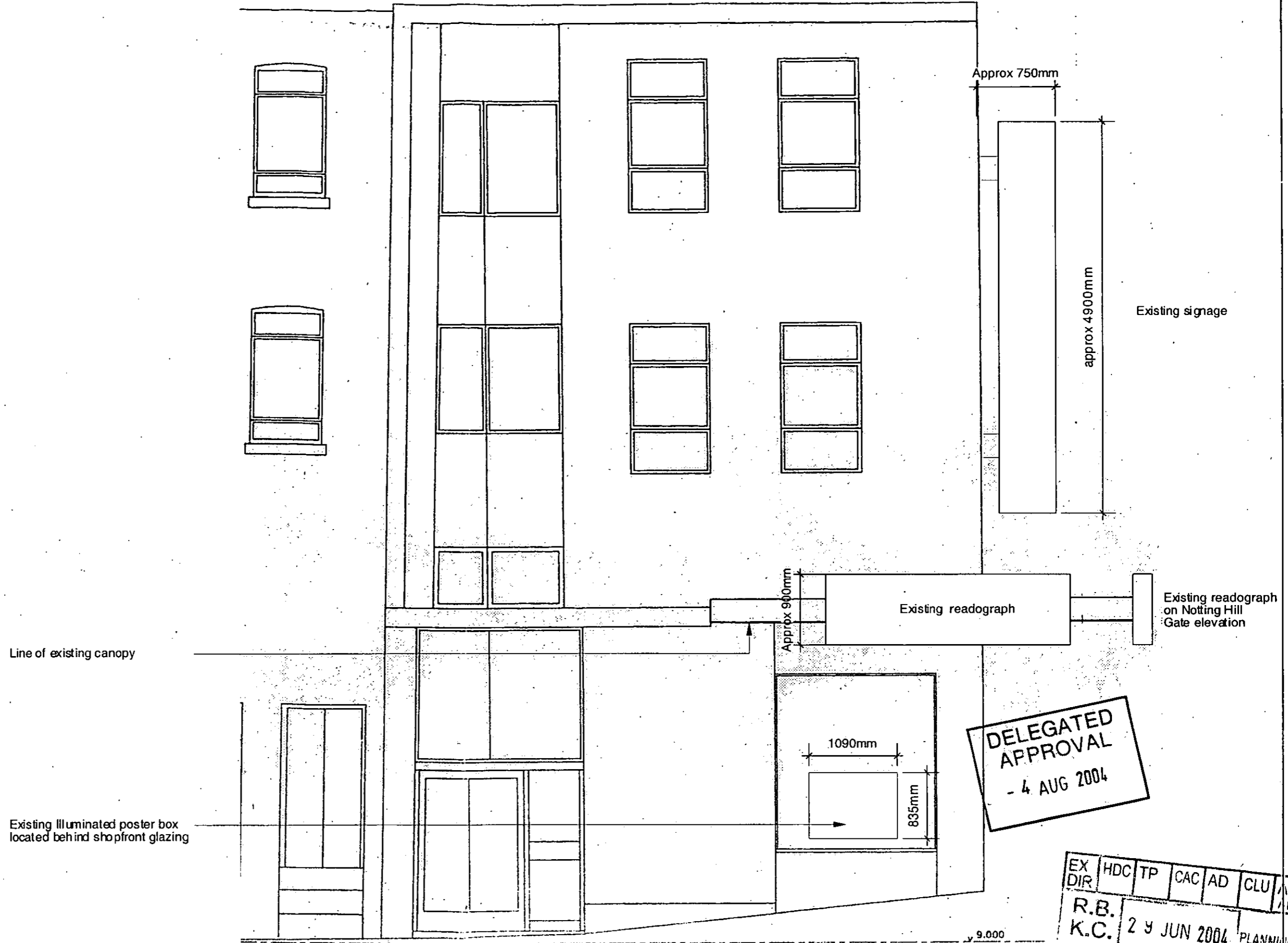
Approx 900mm

Existing readograph

DELEGATED APPROVAL
- 4 AUG 2004

EX	DIR	LD	IP	CAC	AD	CI	NO
							TAK
R.B.		29 JUN 2004		PLANNING			
K.C.							
N	C	3W	SE		IO	REC	

DRAWN BY JB	DRAWING	Job No.	304	Rev.
CHECKED BY	Signage - existing Notting Hill Gate elevation			
REVISION BY	PROJECT Gate Cinema, Notting Hill	Dwg. No.	SK/01	
REVISION CHECKED BY	SCALE 1:50 @ A3	DATE 23/06/04	PANTER HUDSPITH ARCHITECTS	
DO NOT SCALE THIS DRAWING. CHECK ALL DIMENSIONS ON SITE. IF IN DOUBT ASK.		235, Southwark Bridge Road, London, SE1 6NP Tele phone: 020 7407 2788 Fax: 020 7403 4178 www.panterhudspith.com Email: h1o@panterhudspith.com		



DELEGATED APPROVAL
- 4 AUG 2004

EX DIR	HDC	TP	CAC	AD	CLU	NO	AK
R.B.	K.C.	29 JUN 2004	PLANNING				

REVISION	DATE	DRAWN BY JB	DRAWING Signage - Existing Farmer Street elevation	Job No. 304
		CHECKED BY	PROJECT Gate Cinema, Notting Hill	Dwg. No. SK/02
		REVISION BY	SCALE 1:50 @ A3	DATE 23/06/04
		REVISION CHECKED BY	DO NOT SCALE THIS DRAWING. CHECK ALL DIMENSIONS ON SITE IF IN DOUBT ASK. <small>All information contained in this drawing is the sole copy right of Panter Hudspith Architects and is not to be reproduced without their permission.</small>	

PANTER HUDSPITH ARCHITECTS
235, Southwark Bridge Road, London, SE1 6NP
Tele phone: 020 7407 2786 Fax: 020 7403 4178
www.panterhudspith.com Email: info@panterhudspith.com

Projection as existing 745mm

**GATE
CINEMA**

610mm

Projection as existing 2155mm

**GATE
CINEMA**

500mm

Notting Hill Gate

New double sided illuminated sign fixed to wall using brackets to match existing.

Sign consists of a steel internal frame clad with stainless steel cladding - the sign faces are stove painted black. The lettering is cut in 5mm white foamex and fixed to both faces. 15mm blue cold cathode tubes are fixed to the foamex, following the line of each letter.

The sign has 2no. concealed blue cold cathode lamps illuminating the building face. Refer to dwg no 304/SK/05 detail 3

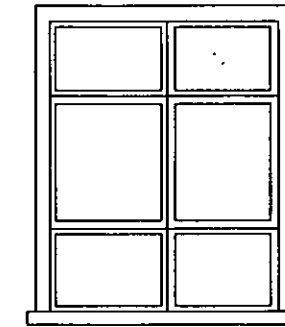
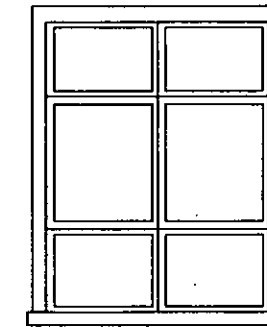
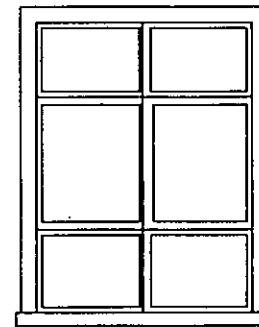
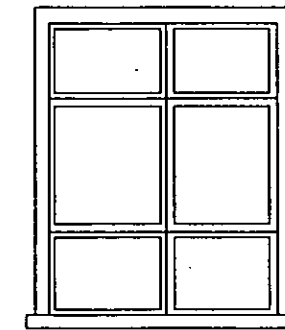
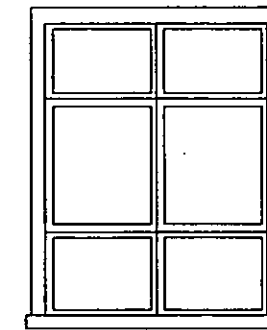
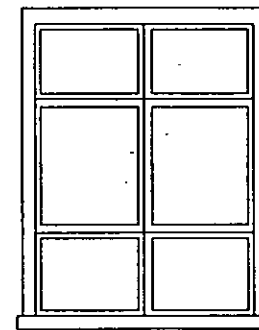
Height above ground + 5100mm

SK/05
03

250mm

4572mm

Sketch by O.S. Miller



SK/05
01

Projection as existing 1010mm

Height above varies
At lowest point +2815mm

500mm

**GATE
CINEMA**

existing illuminated

12890mm

removed by O.S. Miller

Direction of Elevation 1

New readograph lighting box fixed to existing canopy.

Sign consists of a steel internal frame clad with stainless steel. The face of the box is to be fitted with a 5mm thick opal diffuser on the front of which is fixed a readograph rail system. This system consists stainless steel frame fitted with 6mm dia. stainless steel rods. The 'Gate' graphics are black vinyl and are applied to the opal diffuser. The 'Gate cinema' lettering is illuminated from behind.

readograph box

For typical canopy detail refer to dwg no. 304/SK/05 detail 1

Illuminated poster boxes located behind shopfront glazing

Elevation 1 - Towards Farmer St

Elevation 2 - Notting Hill gate elevation

**DELEGATED
APPROVAL**
4 AUG 2004

EXHIBIT TO CAS/AD/CLUB/NO/DIR
R.B. K.C. 29 JUN 2004 PLANNING

REVISION	DATE	DRAWN BY JB	DRAWING	Job No	
		CHECKED BY	Signage - proposed Notting Hill Gate elevation	304	
		REVISION BY	PROJECT Gate Cinema, Notting Hill	SK/03	PANTER HUDSPITH ARCHITECTS 235, Southwark Bridge Road, London, SE1 6NP Telephone: 020 7407 2786 Fax: 020 7403 4176 www.panterhudspith.com Email: info@panterhudspith.com
		REVISION CHECKED BY	SCALE 1:50 @ A3 DATE 23/06/04		
DO NOT SCALE THIS DRAWING. CHECK ALL DIMENSIONS ON SITE. IF IN DOUBT ASK. All information contained in this drawing is the sole copyright of Panter Hudspith Architects and is not to be reproduced without their permission.					

Projection as existing 745mm

SK/05
03

GATE
CINEMA

4572mm

Height above ground
+ 5100mm

130mm

5530mm

Projection as existing 2155mm

SK/05
02

GATE
CINEMA

500mm

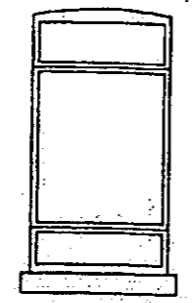
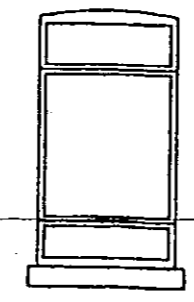
Height above varies
At lowest point + 2815mm

1090mm
835mm

DELEGATED
APPROVAL
- 4 AUG 2004

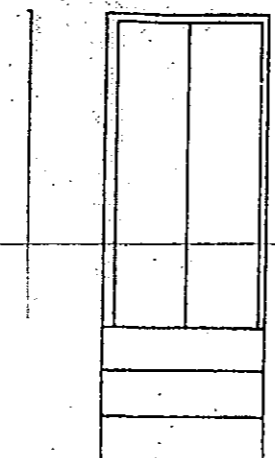
EX DIR HDC TP CAC AD CLU AO AK
9.000 R
K.C. 29 JUN 2004 PLANNING

New double sided illuminated sign fixed to wall using brackets to match existing.
Sign consists of a steel internal frame clad with stainless steel cladding - the sign faces are stove painted black. The lettering is cut in 5mm white foamex and fixed to both faces. 15mm blue cold cathode tubes are fixed to the foamex, following the line of each letter.
The sign has 2no. concealed blue cold cathode lamps illuminating the building face. Refer to dwg no 304/SK/05 detail 3



New readograph lighting box fixed to existing canopy.
Sign consists of a steel internal frame clad with stainless steel. The face of the box is to be fitted with a 5mm thick opal diffuser on the front of which is fixed a readograph rail system. This system consists stainless steel frame fitted with 6mm dia. stainless steel rods. The 'Gate' graphics are black vinyl and are applied to the opal diffuser. The 'Gate cinema' lettering is illuminated from behind.
For typical canopy detail refer to dwg no. 304/SK/05 detail 2
Illuminated poster box located behind shopfront glazing

Direction of Elevation 1



Projection as existing 1010mm

GATE
CINEMA

Farmer Street

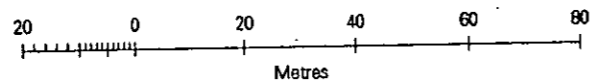
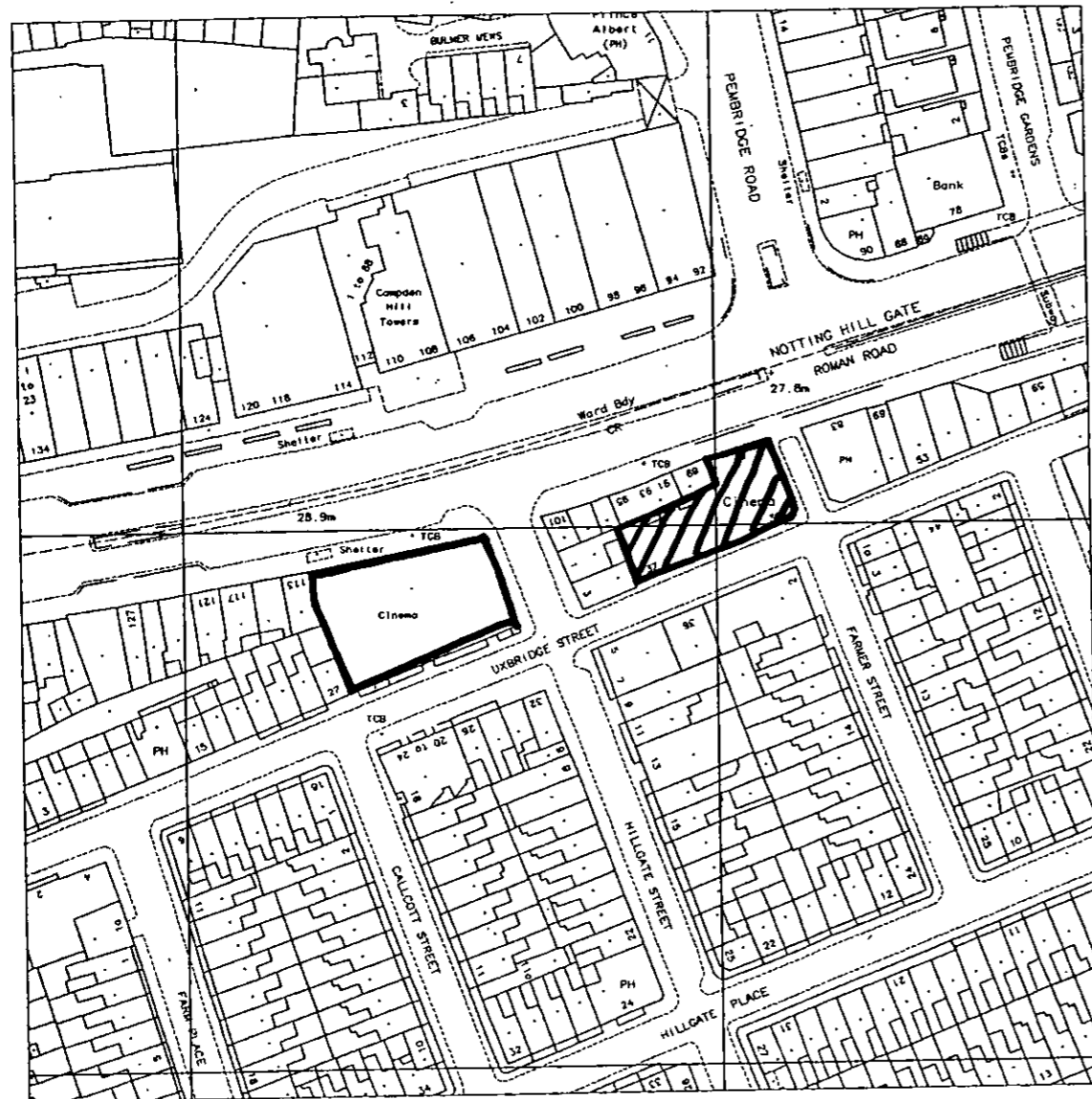
Elevation 1 - Towards Notting Hill Gate elevation

Elevation 2 - Farmer St elevation

REVISION	DATE	DRAWN BY JB	DRAWING Signage - proposed Farmer Street elevation	Job No. 304
		CHECKED BY	PROJECT Gate Cinema, Notting Hill	Dwg No. SK/04
		REVISION BY	SCALE 1:50 @ A3	DATE 23/06/04
		REVISION CHECKED BY	DONOT SCALE THIS DRAWING. CHECK ALL DIMENSIONS ON SITE IF IN DOUBT ASK. <small>All information contained in this drawing is the sole copy right of Pantier Hudspeth Architects and is not to be reproduced without their permission.</small>	

235, Southwark Bridge Road, London, SE1 6NP
 Telephone: 020 7407 2788 Fax: 020 7403 4178
 www.pantierhudsph.com Email: info@pantierhudsph.com

Siteplan Data™



Produced 08 Jan 2004 from Ordnance Survey digital data and incorporating surveyed revision available at this date. © Crown Copyright 2004.

Reproduction in whole or in part is prohibited without the prior permission of Ordnance Survey.

Ordnance Survey and the OS symbol are registered trade marks and Siteplan a trade mark of Ordnance Survey, the national mapping agency of Great Britain.

Centre Coordinates: 525170 180395

National Grid sheet reference at centre of this Siteplan: TQ2580SW

Supplied by: Stanfords
Serial Number: 00012046



Farmer Street elevation

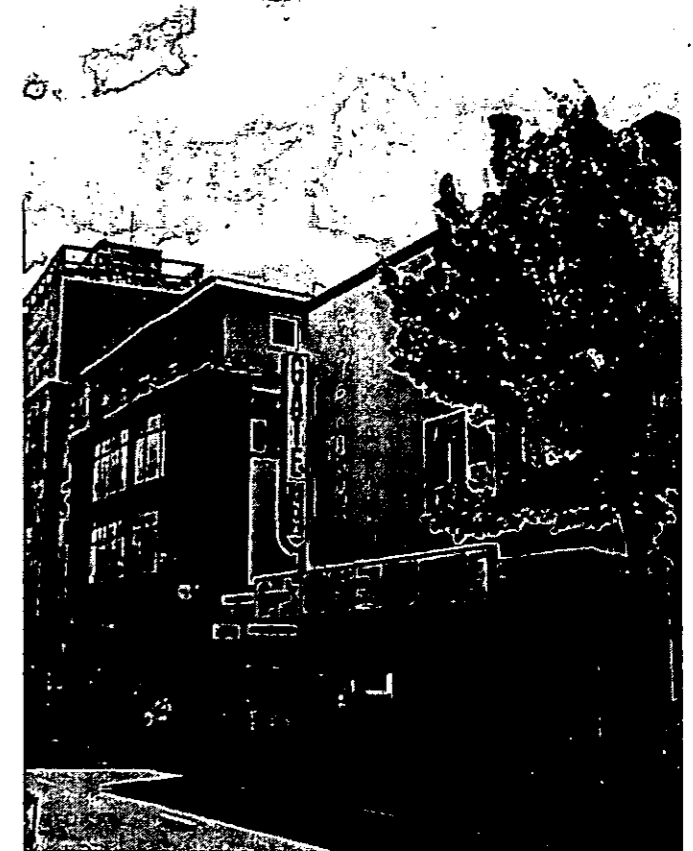


Image looking towards junction of Notting Hill Gate and Farmer Street



Notting Hill Gate elevation

DELEGATED APPROVAL
- 4 AUG 2004

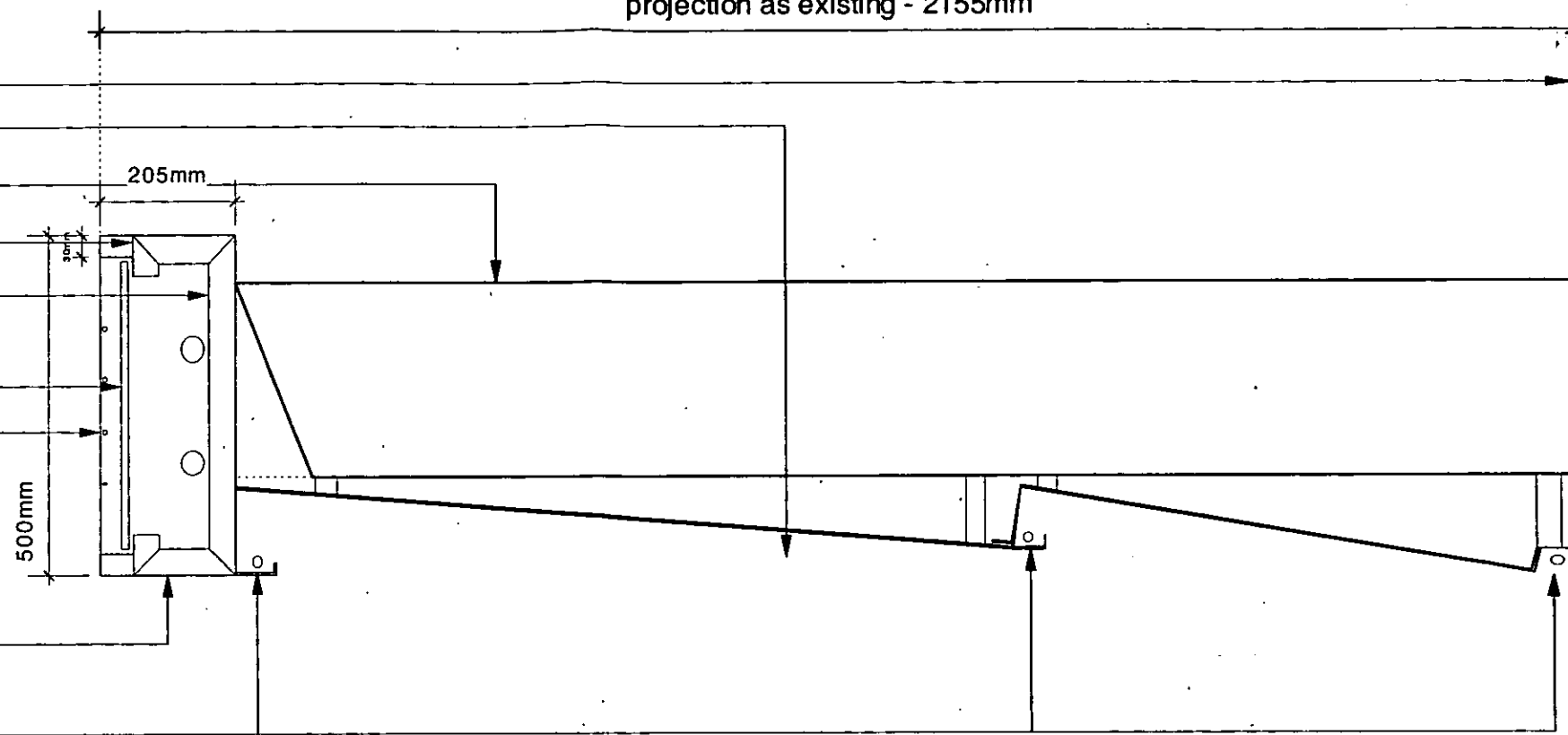
EX DIR	HDC	TP	CAC	AD	CLU	AO
R.B.	K.C.	29 JUN 2004	PLANNING			
N	C	SW	SE	W	IO	REC

DRAWN BY JB	DRAWING Signage - existing signage images	Jcb. No. 304
CHECKED BY	PROJECT Gate Cinema, Notting Hill	Rev. SK / 06
REVISION BY	SCALE 1:50 @ A3	DATE 23/06/04
REVISION CHECKED BY	DO NOT SCALE THIS DRAWING. CHECK ALL DIMENSIONS ON SITE. IF IN DOUBT ASK. <small>All information contained in this drawing is the sole property of Pantier Hudspith Architects and is not to be reproduced without their permission.</small>	

PANTIER HUDSPITH ARCHITECTS
235, Southwark Bridge Road, London, SE1 6NP
Telephone: 020 7407 2788 Fax: 020 7403 4176
www.pantierhudspith.com Email: info@pantierhudspith.com

projection as existing - 2155mm

- Line of exterior wall
- Stainless steel panels suspended under existing canopy
- Existing canopy
- New readograph lighting box fixed to existing canopy.
- stainless steel internal frame
- 5mm thick opal diffuser fixed to frame
- 6mm dia. stainless steel rods
- Stainless steel sheet cladding to readograph box.
- 20mm dia. blue cold cathode lamp

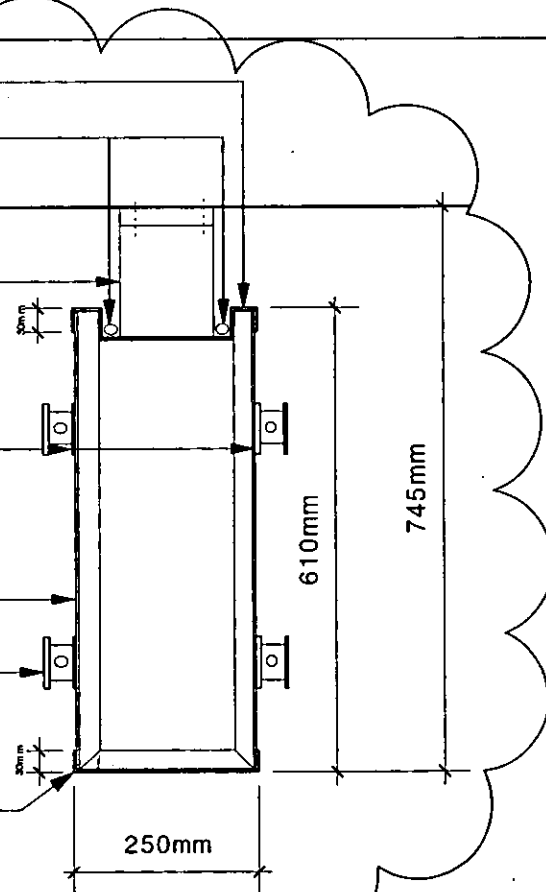


JB/04/1469/A

DELEGATED APPROVAL
- 4 AUG 2004

Detail 1 - Section through Notting Hill Gate canopy

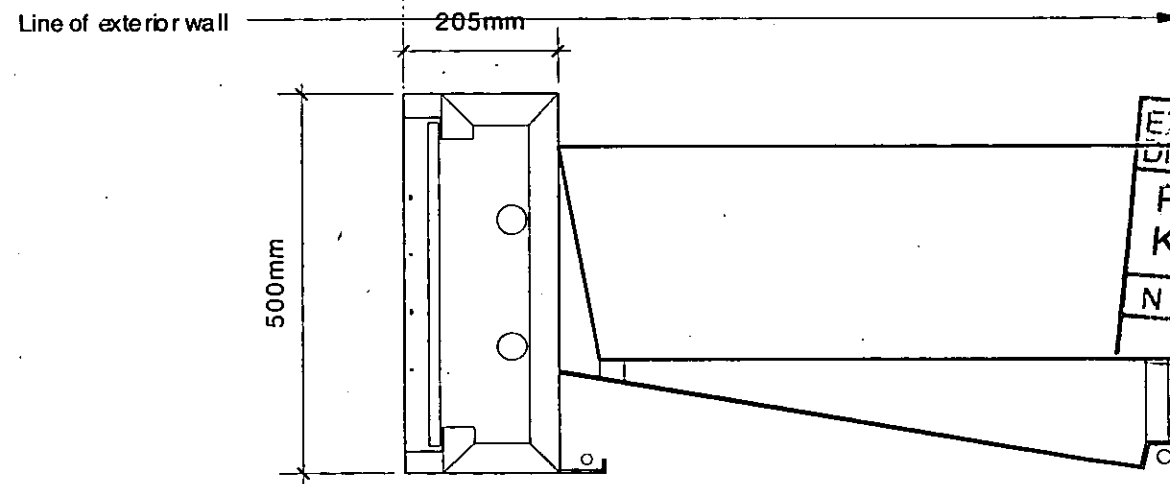
- Stainless steel cladding to rear of box stove painted white to reflect light
- 20mm dia. blue cold cathode lamps to light wall
- Line of exterior wall
- Fixing brackets as existing
- 5mm thick foamex lettering with 15mm blue cold cathode tubes following line of lettering
- stainless steel sheet stove painted black to faces of sign
- Acrylic lettering to conceal cold cathode tubes
- stainless steel sheet cladding to ends of sign stove painted black



1:10

Detail 3 - Plan section through vertical sign

projection as existing - 1010mm



EX	HDC	TP	CAC	AD	CLU	AO
DIR						AK
R.B.		22 JUL 2004		PLANNING		
K.C.						
N	C	SW	SE	APP	IO	REC
		ARB	FPLN	DES	FEE	

1:10 NOT 1:100

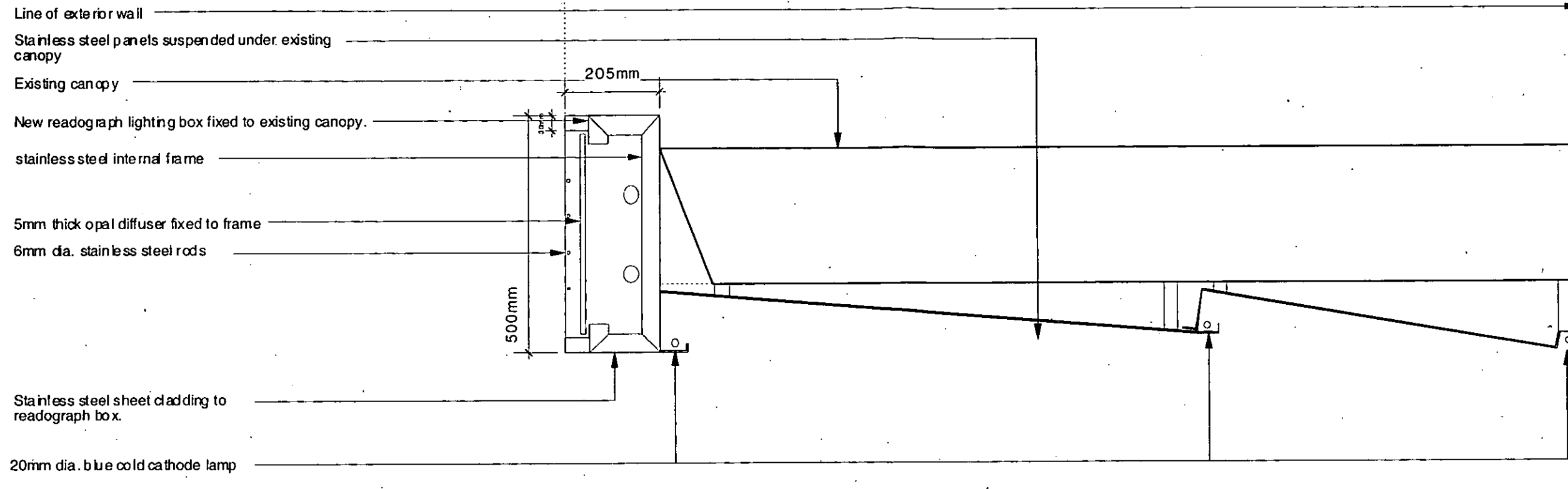
Detail 2 - Section through Farmer Street canopy
Notes as per Notting Hill gate elevation

REV.A Vertical sign amended

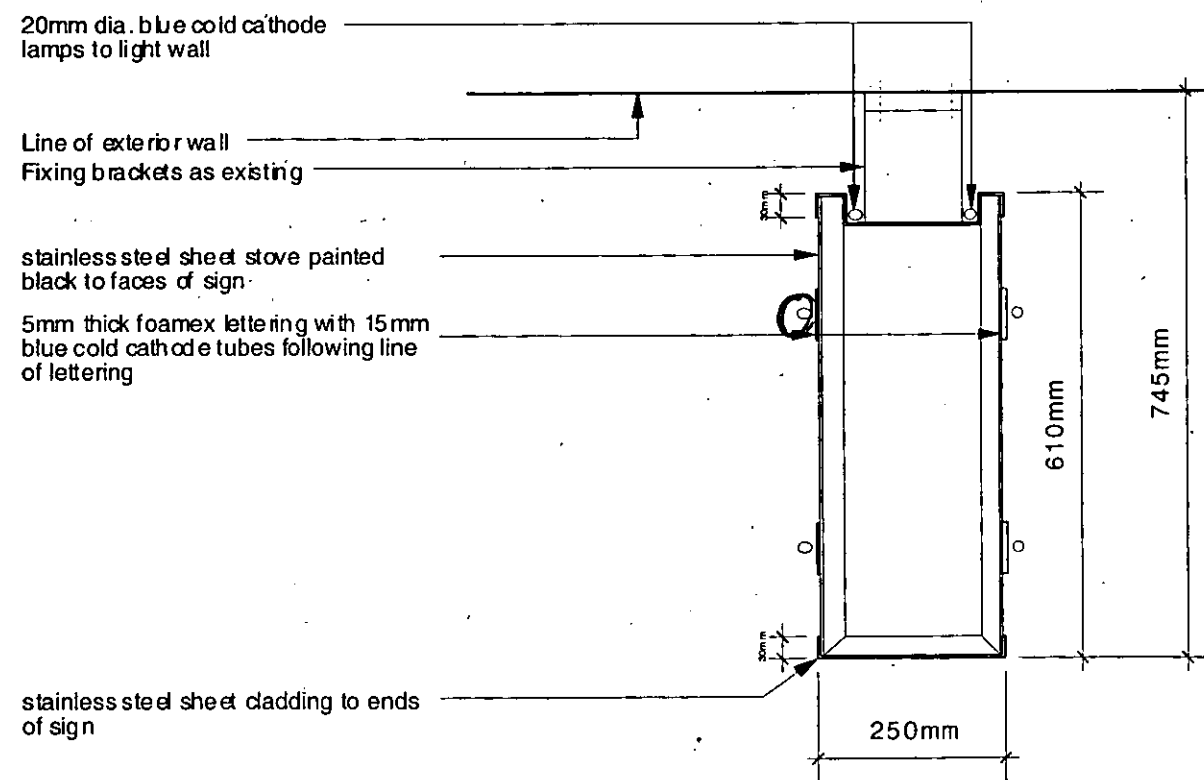
DRAWN BY JB	DRAWING Signage - details	Jcb. No. 304	
CHECKED BY	PROJECT Gate Cinema, Notting Hill	Rev. A	
REVISION BY	SCALE 1:50 @ A3	DATE 23/06/04	
REVISION CHECKED BY	DO NOT SCALE THIS DRAWING. CHECK ALL DIMENSIONS ON SITE IF IN DOUBT ASK.		

www.panterhudspith.com Email: info@panterhudspith.com

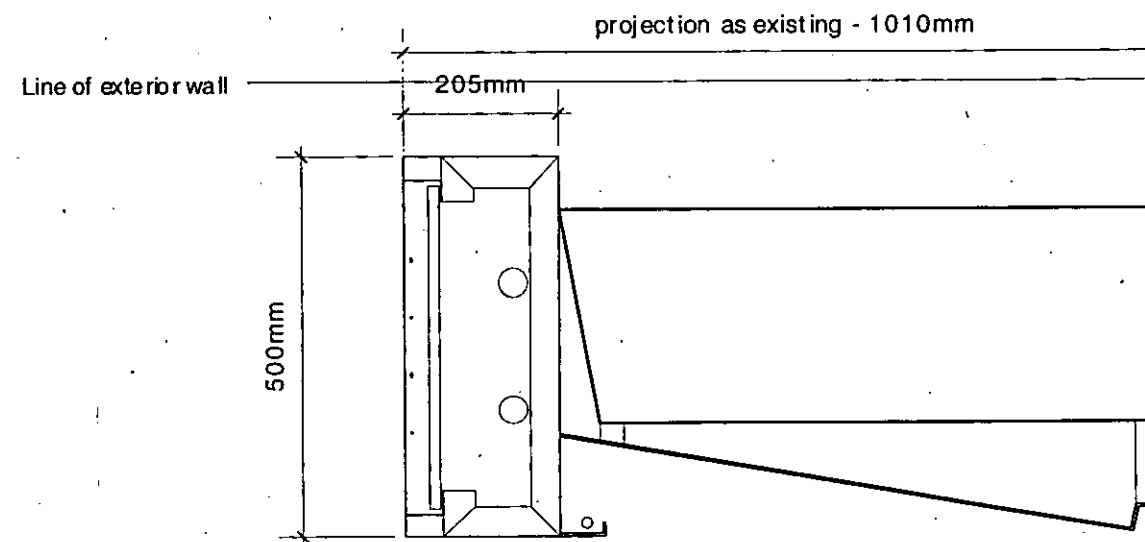
projection as existing - 2155mm



Detail 1 - Section through Notting Hill Gate canopy.



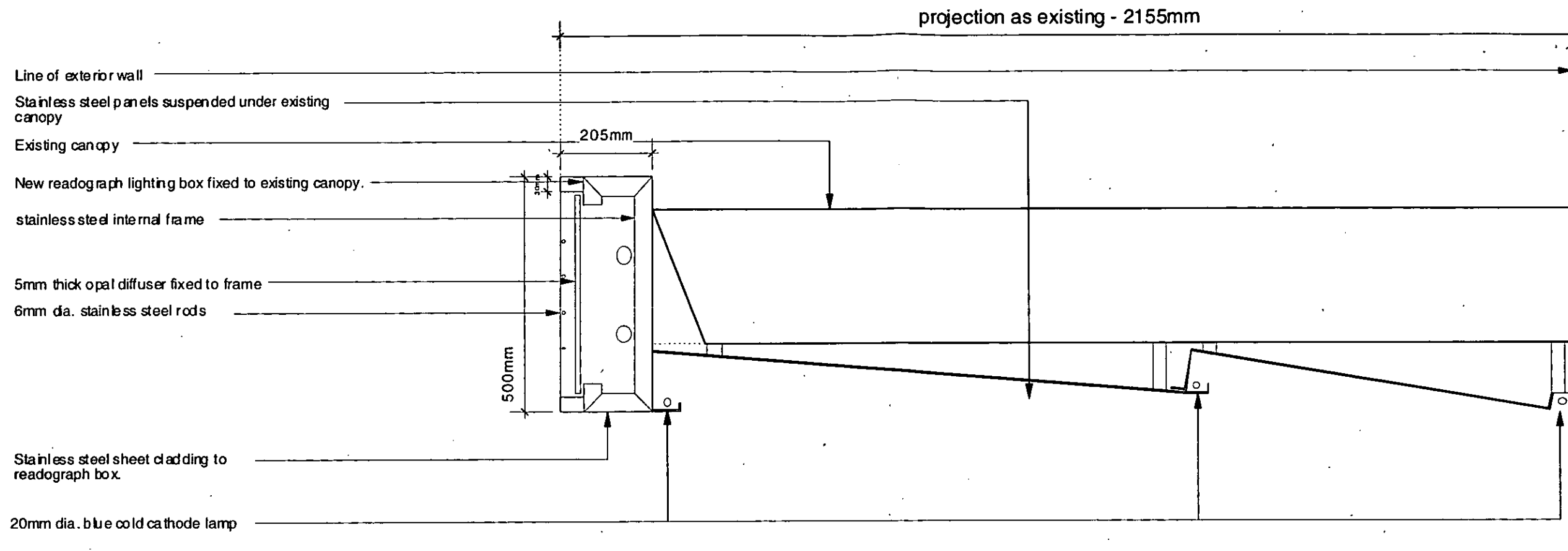
Detail 3 - Plan section through vertical sign



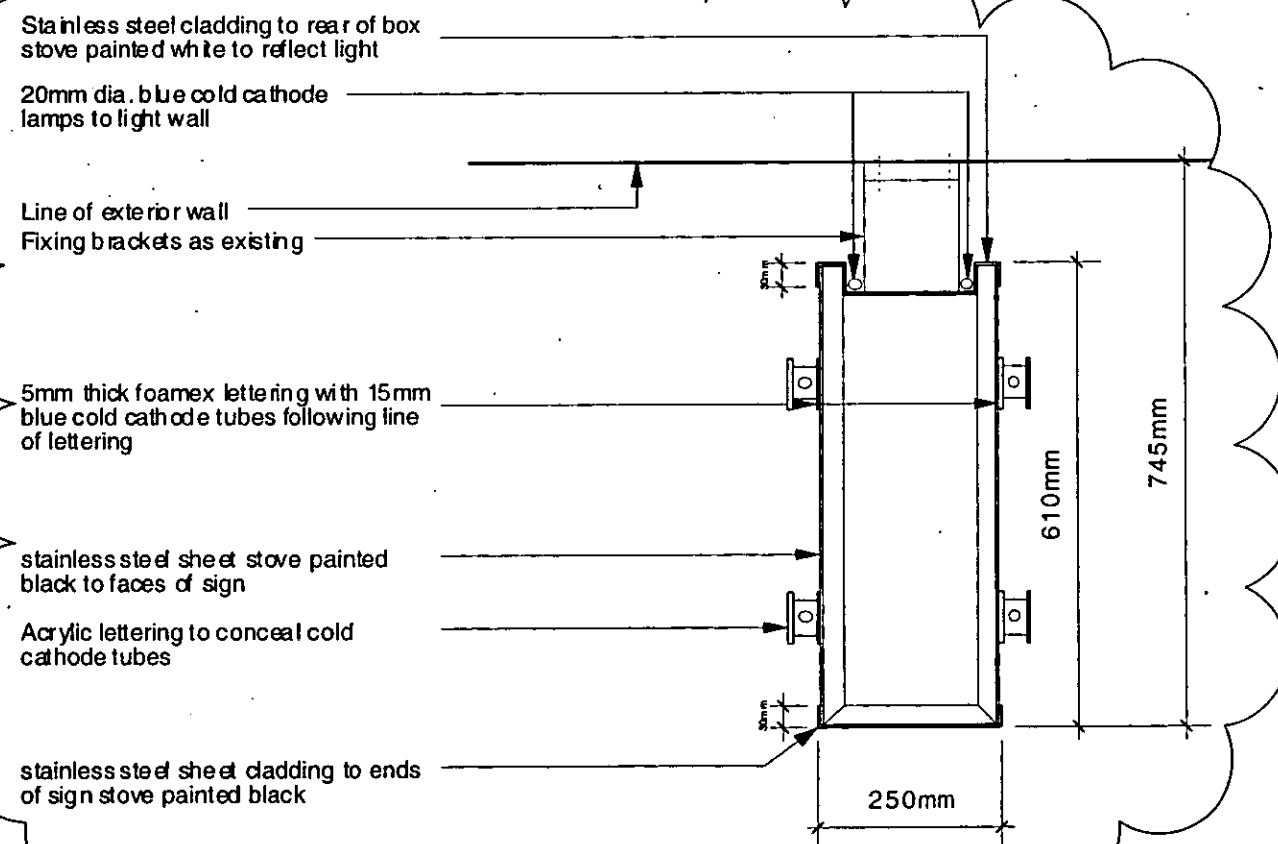
Detail 2 - Section through Farmer Street canopy
Notes as per Notting Hill gate elevation

EX DIR	HDC	TP	CAC	AD	CLU	AO
R.B.	K.C.	29 JUN 2004	PLANNING			
N	C	3W	SE	IO	REC	
		ARB	FPLN	DES	FEE	

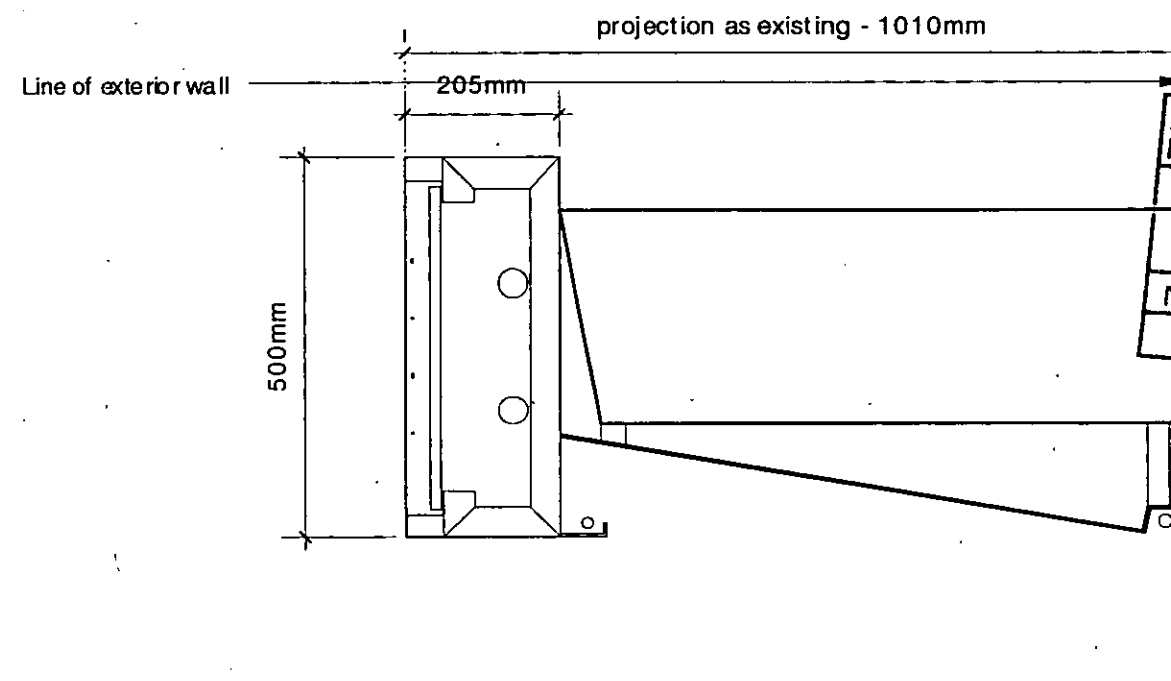
DRAWN BY JB	DRAWING Signage - details	Job No. 304	<p>PANTER HUDSPITH ARCHITECTS</p> <p>235, Southwark Bridge Road, London, SE1 8NP</p> <p>Telephone: 020 7407 2798 Fax: 020 7403 4178</p> <p>www.panterhudspith.com Email: info@panterhudspith.com</p>
CHECKED BY	PROJECT Gate Cinema, Notting Hill	Dwg. No. SK / 05	
REVISION BY	SCALE 1:50 @ A3 DATE 23/06/04	Rev.	
REVISION CHECKED BY	DO NOT SCALE THIS DRAWING. CHECK ALL DIMENSIONS ON SITE. IF IN DOUBT ASK. All information contained in this drawing is sole copy right of Panter Hudspith Architects and is not to be reproduced without their permission.		



Detail 1 - Section through Notting Hill Gate canopy



Detail 3 - Plan section through vertical sign



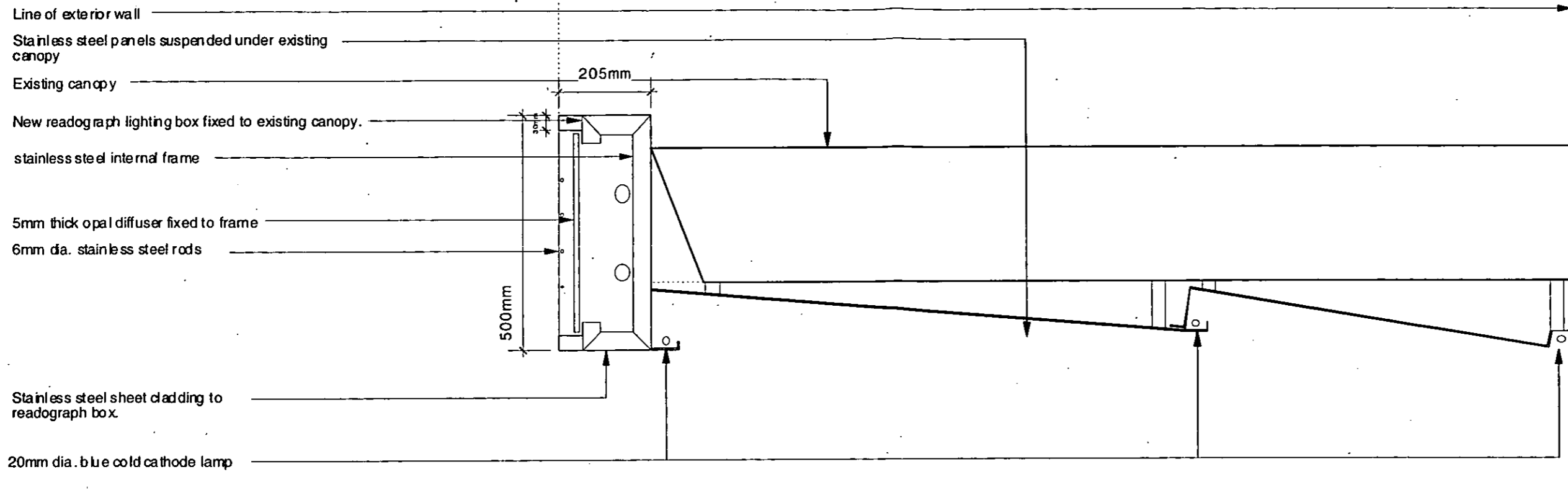
Detail 2 - Section through Farmer Street canopy
Notes as per Notting Hill gate elevation

EX	HDC	TP	CAC	AD	CLU	AO
LIR						AK
R.B. K.C. 22 JUL 2004						PLANNING
N	C	SW	SE	APP.	IO	REC
			ARB	FPLN	DES	FEEs

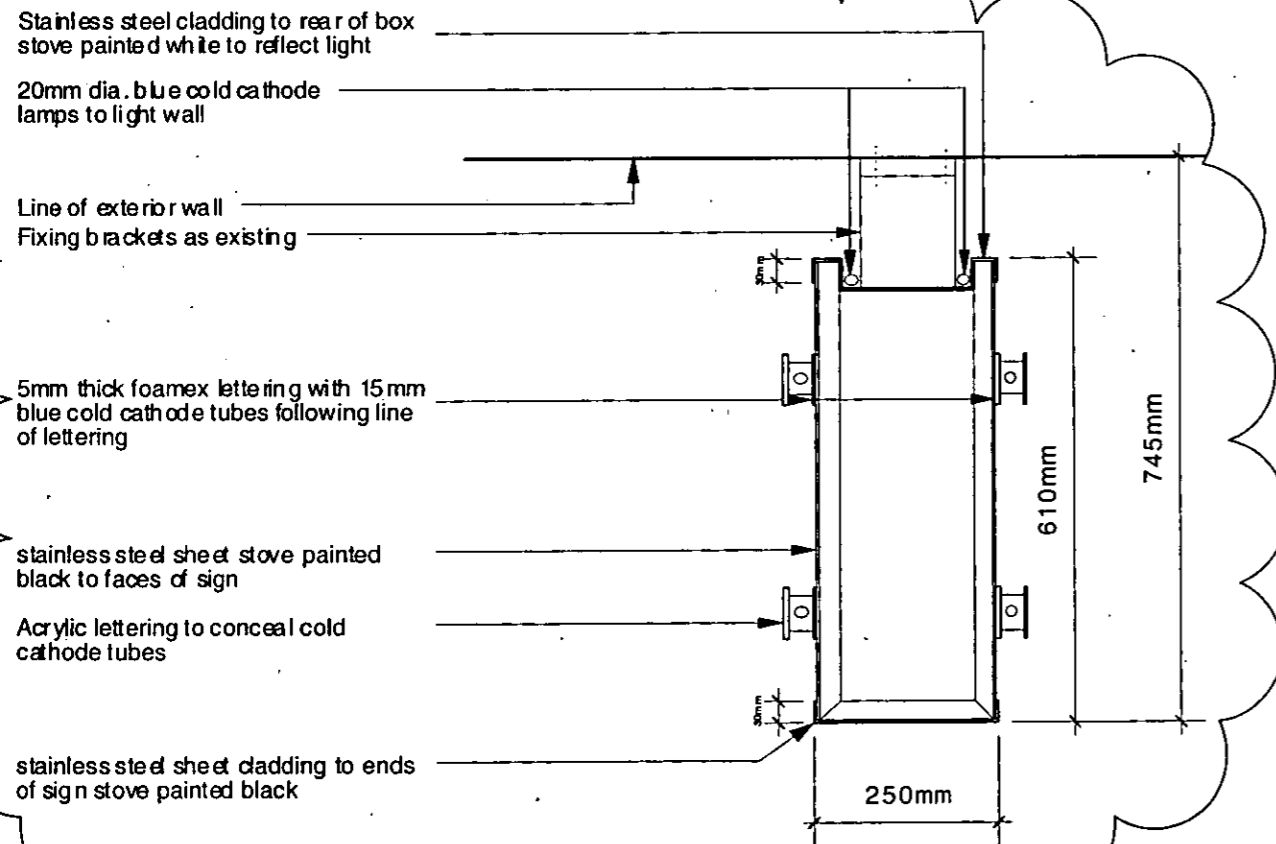
REV.A Vertical sign amended

DRAWN BY JB	DRAWING Signage - details	Job No. 304	<p>PANTIER HUDSPITH ARCHITECTS</p> <p>235, Southwark Bridge Road, London, SE1 8NP Telephone: 020 7407 2788 Fax: 020 7403 4178 www.pantierhudspith.com Email: hfo@pantierhudspith.com</p>
CHECKED BY	PROJECT Gate Cinema, Notting Hill	Rev. No. SK / 05	
REVISION BY	SCALE 1:50 @ A3	DATE 23/06/04	
REVISION CHECKED BY	DO NOT SCALE THIS DRAWING. CHECK ALL DIMENSIONS ON SITE. IF IN DOUBT ASK. <small>All information contained in this drawing is the sole copyright of Pantier Hudspith Architects and is not to be reproduced without their permission.</small>		

projection as existing - 2155mm

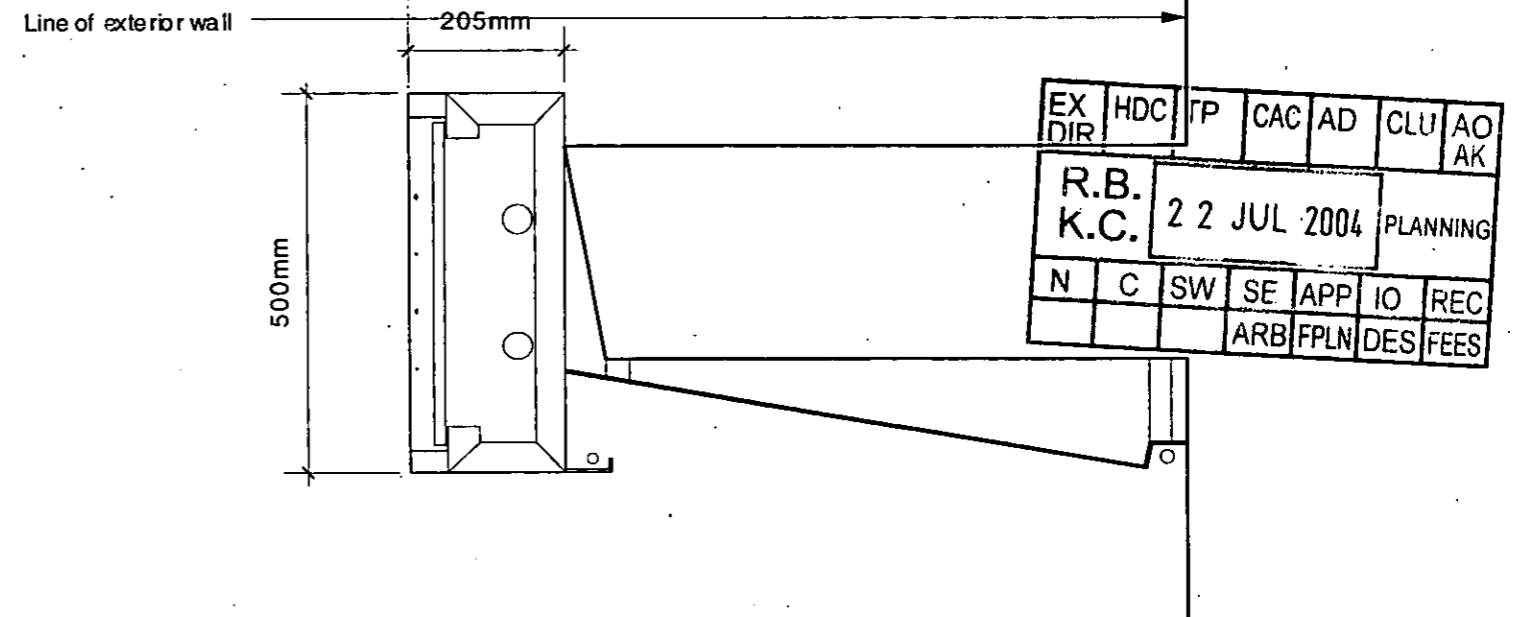


Detail 1 - Section through Notting Hill Gate canopy



Detail 3 - Plan section through vertical sign

projection as existing - 1010mm

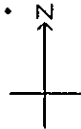


Detail 2 - Section through Farmer Street canopy
Notes as per Notting Hill gate elevation

REV.A Vertical sign amended

DRAWN BY JB	DRAWING Signage - details	Job No. 304	
CHECKED BY	PROJECT Gate Cinema, Notting Hill	Rev. A	
REVISION BY	SCALE 1:50 @ A3	DATE 23/06/04	
REVISION CHECKED BY	DO NOT SCALE THIS DRAWING. CHECK ALL DIMENSIONS ON SITE. IF IN DOUBT ASK.		

235, Southwark Bridge Road, London, SE1 6NP
 Telephone: 020 7407 2788 Fax: 020 7403 4178
 www.panterhudspith.com Email: info@panterhudspith.com



Siteplan Data™



Produced 08 Jan 2004 from Ordnance Survey digital data and incorporating surveyed revision available at this date. © Crown Copyright 2004.



Reproduction in whole or in part is prohibited without the prior permission of Ordnance Survey.

Ordnance Survey and the OS symbol are registered trade marks and Siteplan a trade mark of Ordnance Survey, the national mapping agency of Great Britain.

EX DIR	HDC	TP	CAC	AD	CLU	AO AK
R.B.	16 JUL 2004			PLANNING		
K.C.						
N	C	SW	SE	APP	IO	REC
			ARB	FPLN	DES	FEES

Centre Coordinates: 625170 180395

National Grid sheet reference at centre of this Siteplan: TQ2580SW

Supplied by: Stanfords
Serial Number: 00012046

Gate Cinema, Notting Hill
 Light well taken from second floor office window



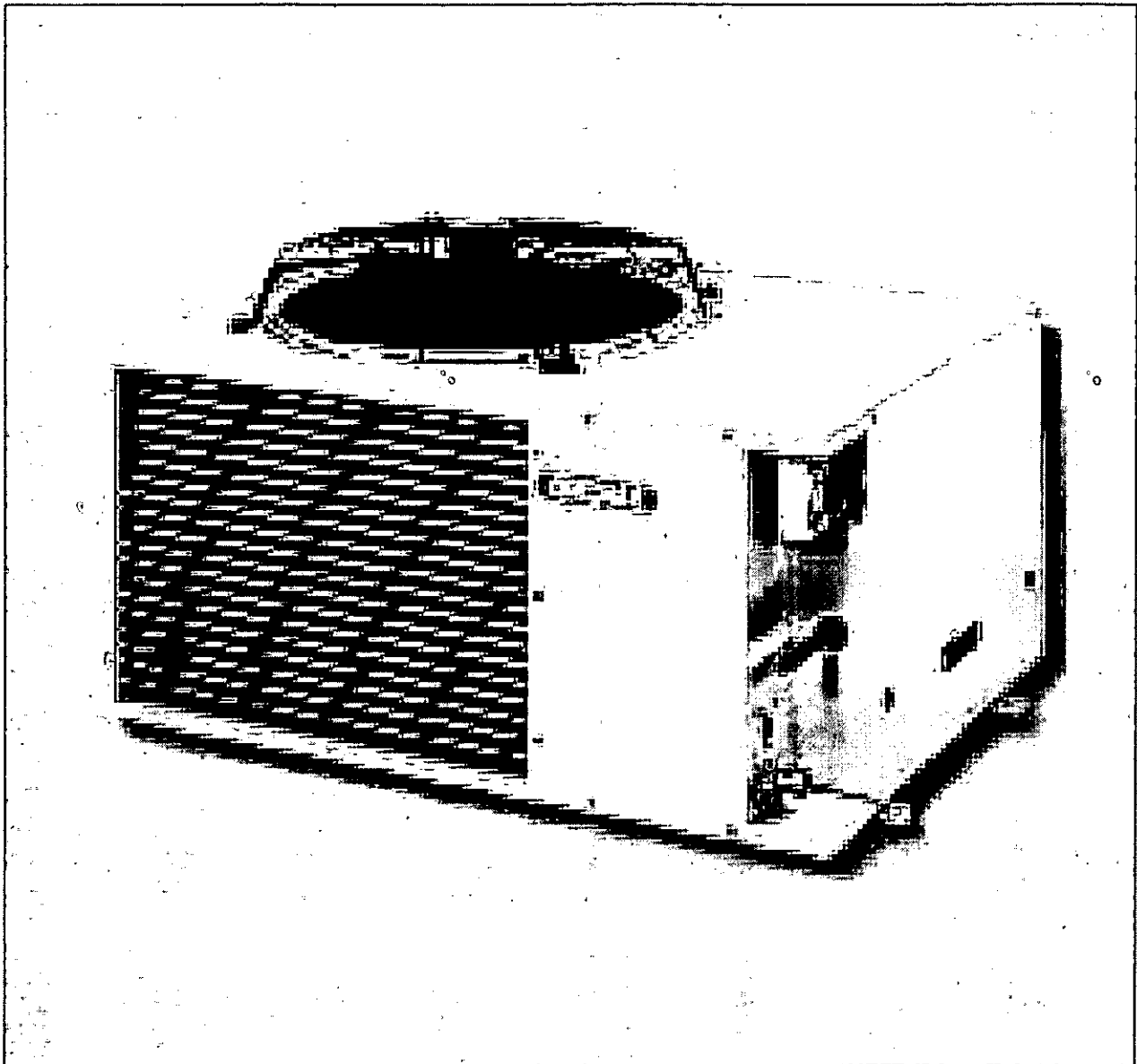
rear door of adjacent cafe

3 no existing ventilation units in poor condition. These will be replaced with one new unit similar in size to existing

DIR			CAC	AD	CLU	AO
						AK
R.B.					16 JUL 2004	PLANNING
K.C.						
N	C	SW	SE	APP	IO	REC
				ARB	FPLN	DES FEES

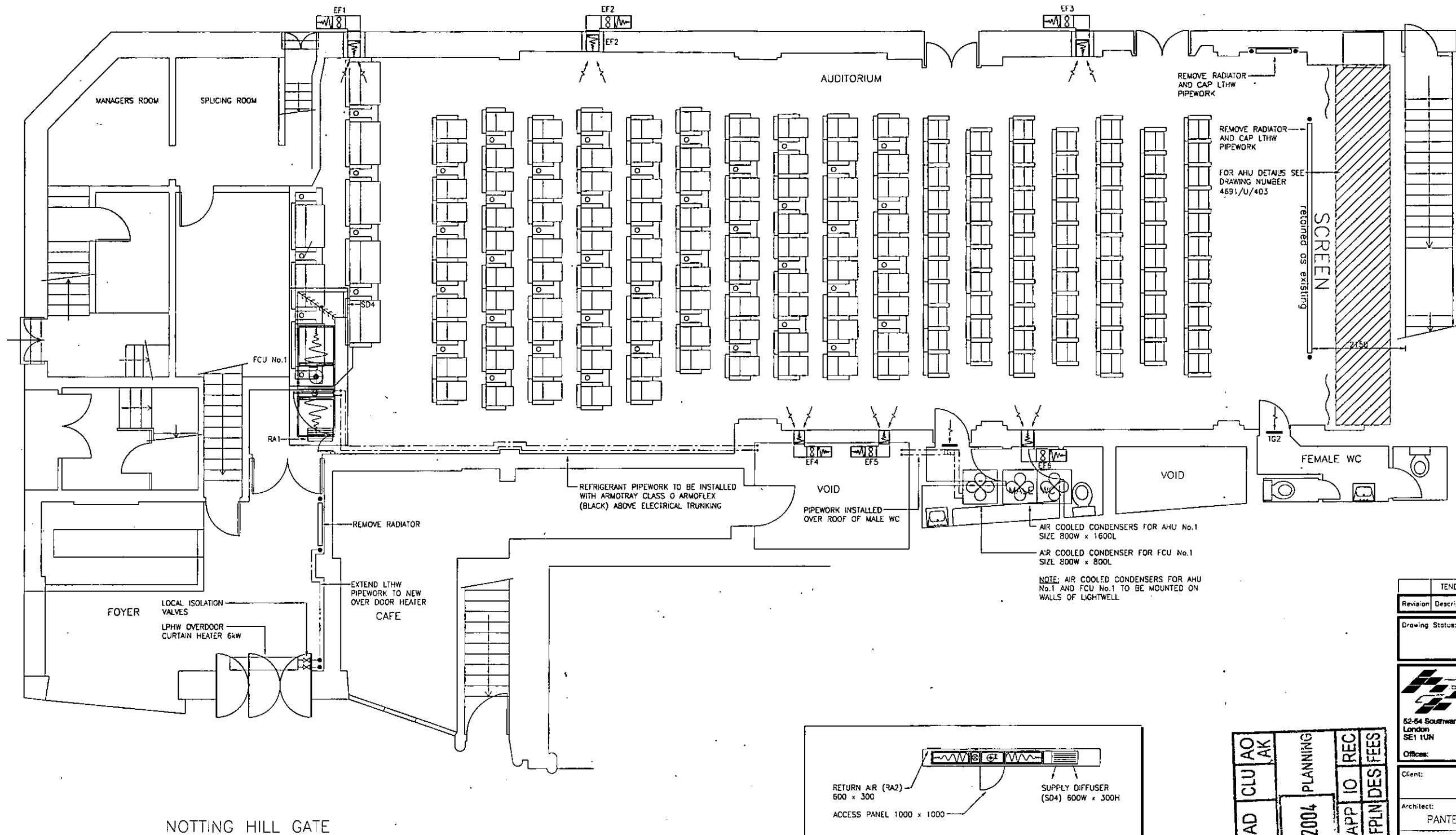
Gate Cinema, Notting Hill

Image of typical condenser unit to be installed in light well

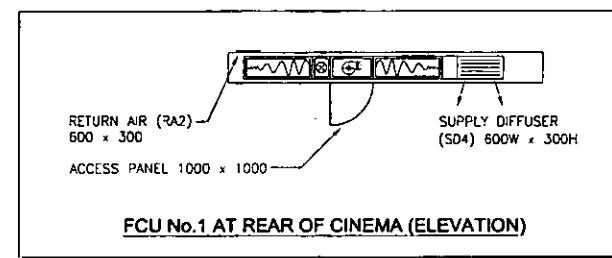


EX DIR	IDC	TP	CAC	AD	CLU	AO
R.B.						AK
K.C.			16 JUL 2004		PLANNING	
N	C	SW	SE	APPL	IO	REC
			ARB	FPLN	DES	FEES

UXBRIDGE STREET



NOTTING HILL GATE



AIR COOLED CONDENSERS FOR AHU No.1
SIZE 800W x 1600L
AIR COOLED CONDENSER FOR FCU No.1
SIZE 800W x 800L
NOTE: AIR COOLED CONDENSERS FOR AHU No.1 AND FCU No.1 TO BE MOUNTED ON WALLS OF LIGHTWELL

TENDER ISSUE	JUNE'04
Revision Description	Date

Drawing Status:
TENDER

hurleypalmerflatt
building services & structural consulting engineers
building surveyors & planning supervisors
IT & communication consultants

52-54 Southwark St London SE1 1UN
Tel: +44 (0) 20 7407 3243
Fax: +44 (0) 20 7940 4380
Email: info@hurleypalmerflatt.com
www: www.hurleypalmerflatt.com
Offices: London, Purley, Glasgow, Manchester

EX DIR	HDC	TP	CAC	AD	CLU	AO	AK
R.B.	K.C.	16 JUL 2004			PLANNING	REC	FEES
N	C	SW	SE	APP	IO	DES	DES

Client:	
Architect:	PANTER HUDSPITH ARCHITECTS
Project:	GATE CINEMA NOTTING HILL
Title:	MECHANICAL SERVICES VENTILATION LAYOUT

Drawn	SS/AMG	Chkd/Appd:		Date	JUNE'04
Cad File:	4691401	Scale	1:50		
Drawing Number	4691/U/401			Revision	-