

R.B.K. & C.  
TOWN PLANNING  
13 MAR 2001  
RECEIVED

Revision D - 27/7/00 - Amended to suit conservation officers comments.  
Revision C - 6/7/00 - Amended to suit planning officers comments.  
Revision B - 1/6/00 - Updated to suit elevation + section drawings.  
Revision A - 19/7/00 - Amended to suit clients comments.

title  
27 KELSO PLACE - KENSINGTON - LONDON W8

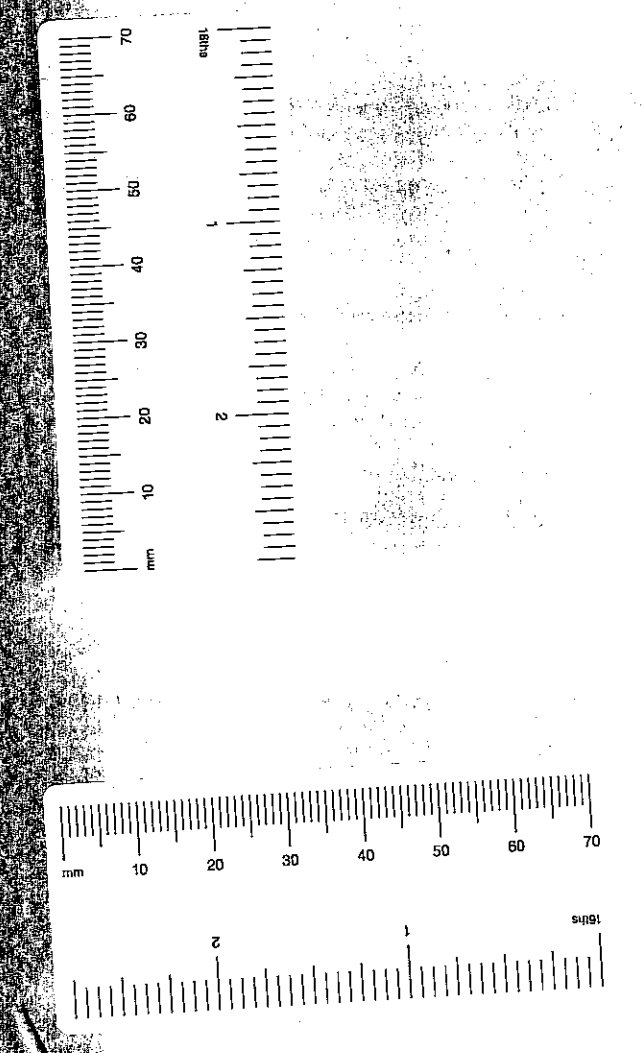
client  
MOUNTCASHEL PLC

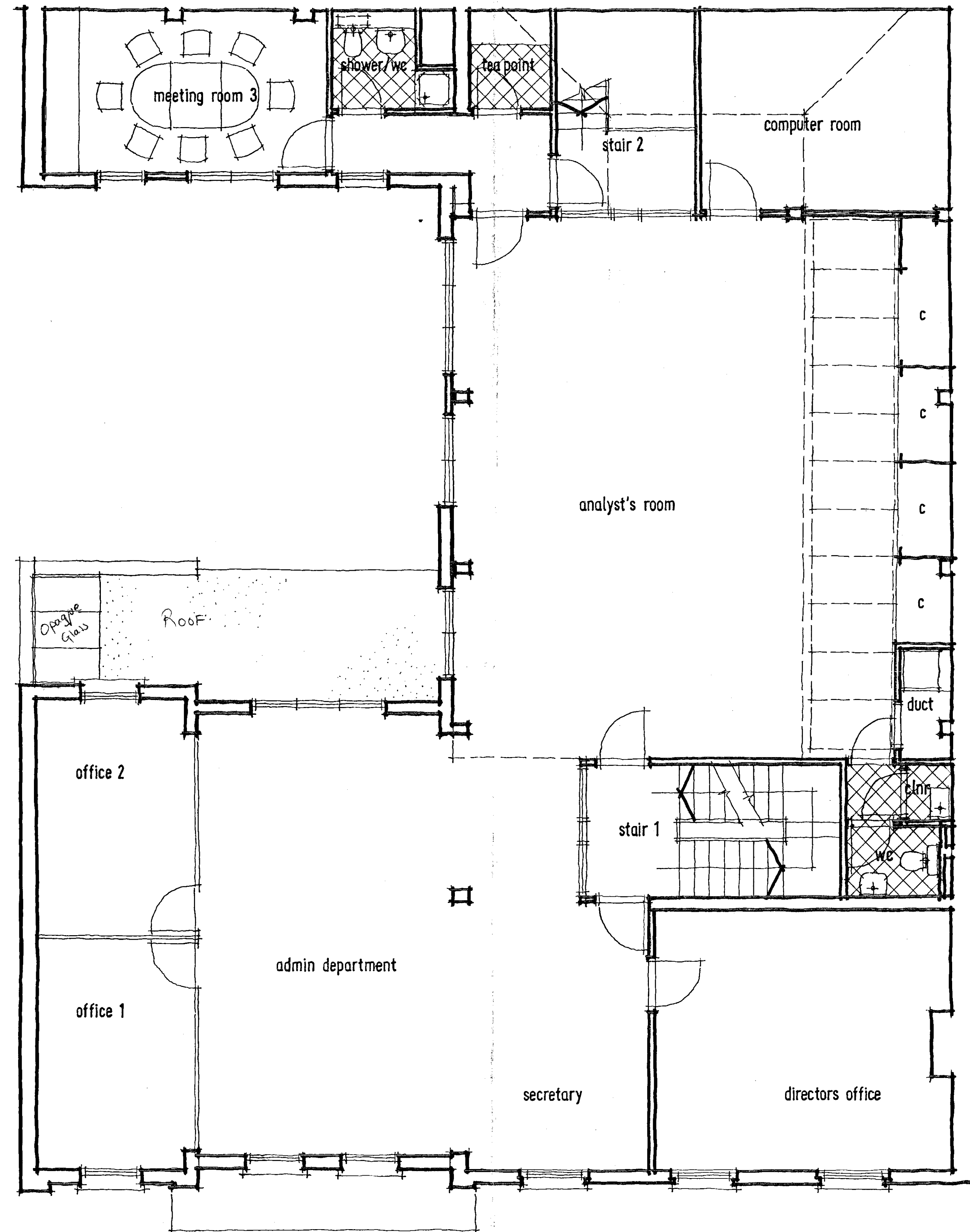
description  
PROPOSED GROUND FLOOR PLAN

bm architects  
3 cowper road  
london  
SW19 1QA

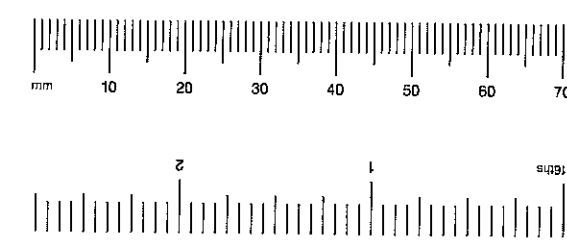
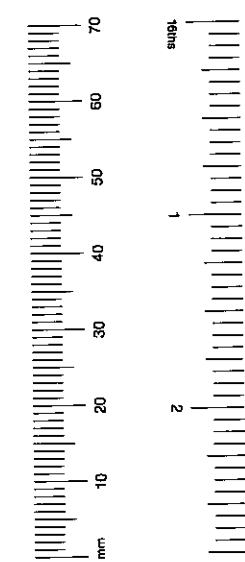
t: 0208 544 0777 e: burgess.mean@btinternet.com

date: 28/4/00 scale: 1:50 project: 20305 drawing: 001 revision: 1





PROPOSED FIRST FLOOR PLAN



R.B.K. & C.  
TOWN PLANNING  
13 MAR 2001  
RECEIVED

Revision D - 27/7/00 - Amended to suit conservation officers comments.  
Revision C - 6/7/00 - Amended to suit planning officers comments.  
Revision B - 1/6/00 - Updated to suit elevation + section drawings.  
Revision A - 19/5/00 - Amended to suit clients comments.

title  
27 KELSO PLACE · KENSINGTON · LONDON W8

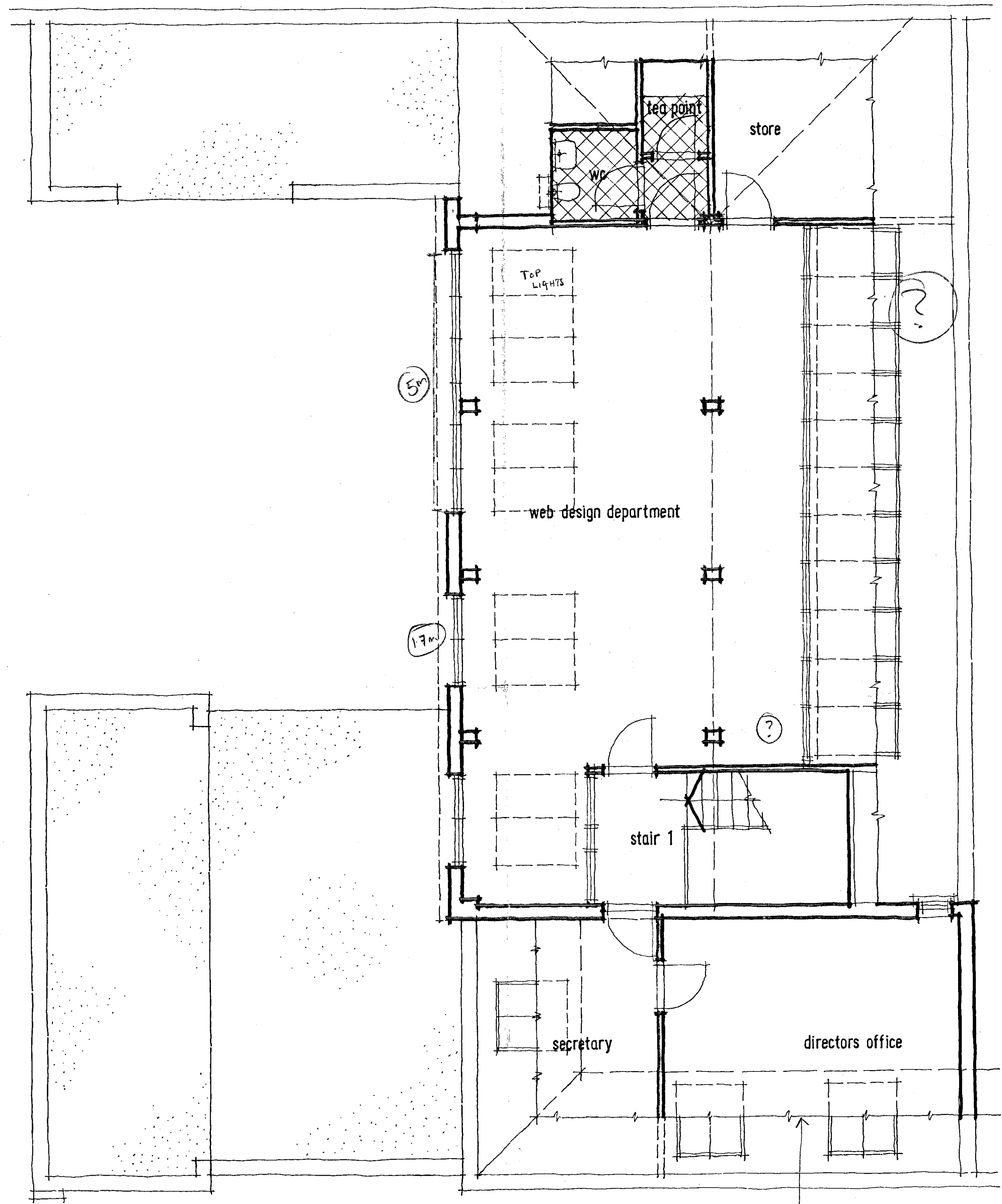
client  
MOUNTCASHEL PLC

description  
PROPOSED FIRST FLOOR PLAN

burgess mean architects  
3 cowper road  
london  
SW19 1QA

t: 0208 544 0777 e: burgess.mean@btinternet.com

date: 28/4/00 scale: project: drawing: revision:  
checked: qpb | 1:50 | 20305 | 002 | >



PROPOSED SECOND FLOOR PLAN

R.B.K. & C.  
TOWN PLANNING  
13 MAR 2001  
RECEIVED

Revision D - 27/7/00 - Amended to suit conservation officers comments.  
Revision C - 6/7/00 - Amended to suit planning officers comments.  
Revision D - 1/6/00 - Updated to suit elevation + section drawings.  
Revision A - 19/2/00 - Amended to suit clients comments.

title  
27 KELSO PLACE · KENSINGTON · LONDON W8

client  
MOUNTCASHEL PLC

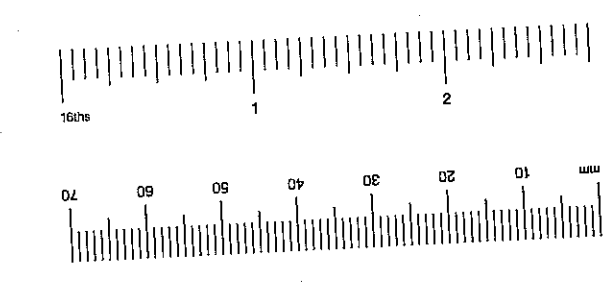
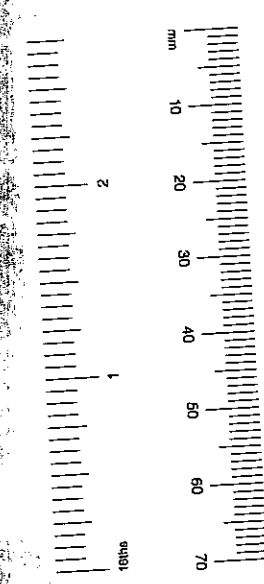
description  
PROPOSED SECOND FLOOR PLAN

bm architects  
3 cowper road  
london  
SW19 1QA

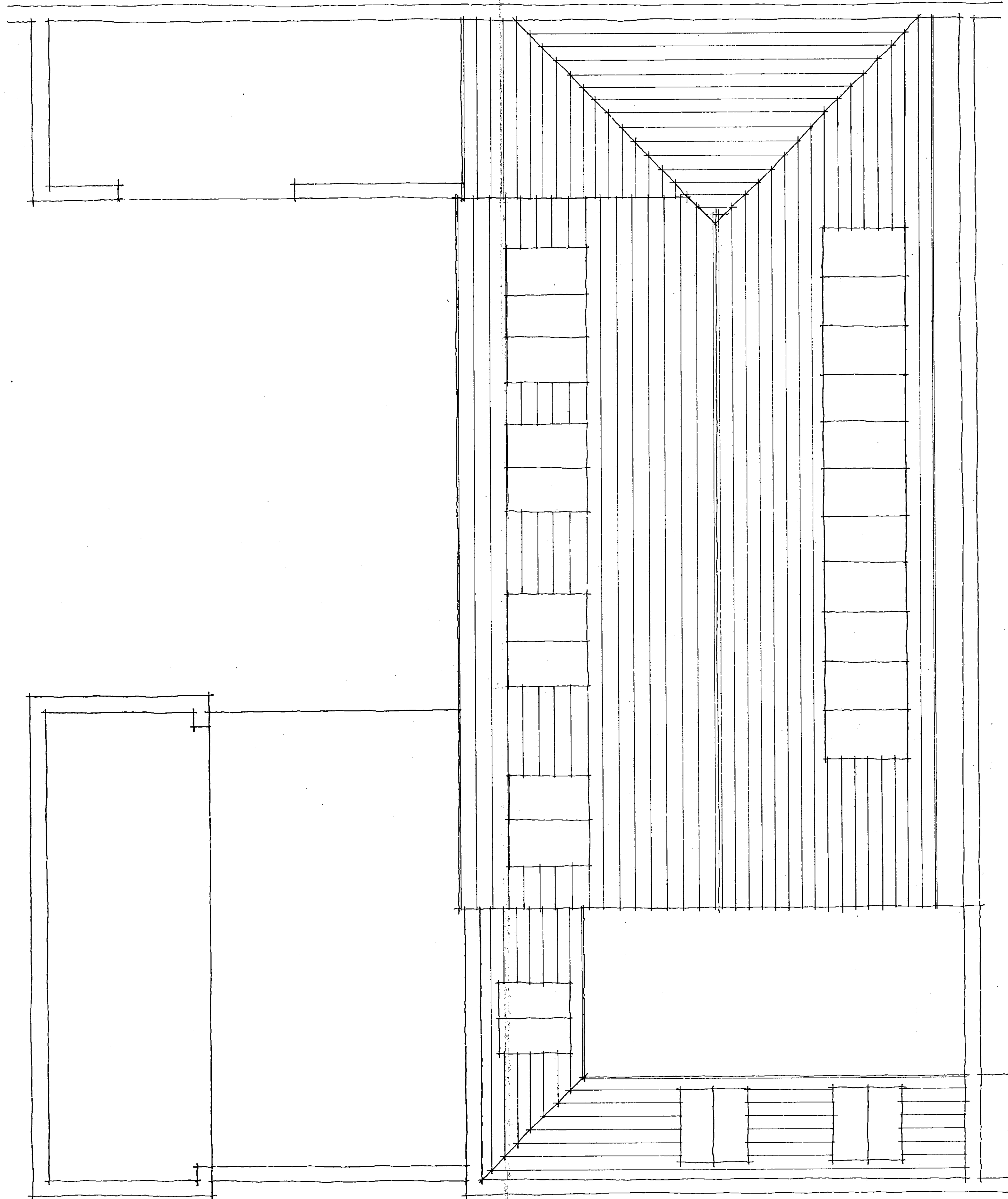
all dimensions to be checked on site any discrepancy between the drawing and other information is to be referred to the contractor. PLS drawing is copyright

t: 0208 544 0777 f: 0208 544 0777 e: burgess.mean@btinternet.com

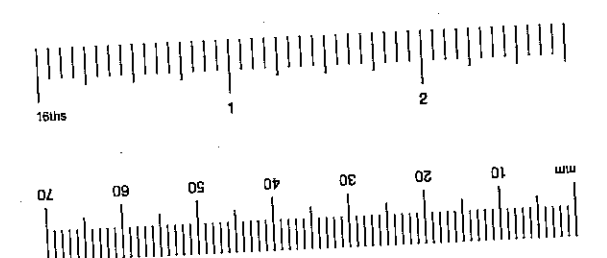
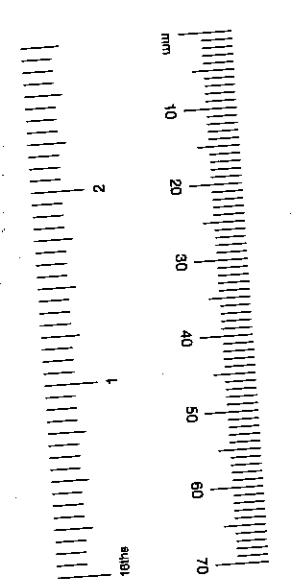
date: 28/4/00 scale: 1:50 project: 20305 drawing: 003 revision: >



TP/0012313  
④



PROPOSED ROOF PLAN



R.B.K. & C.  
TOWN PLANNING  
13 MAR 2001  
RECEIVED

Revision D - 21/7/00 - Amended to suit conservation officers comments.  
Revision C - 6/7/00 - Amended to suit planning officers comments.  
Revision B - 1/6/00 - Updated to suit elevation + section drawings.  
Revision A - 19/5/00 - Amended to suit clients comments.

title  
27 KELSO PLACE · KENSINGTON · LONDON W8

client  
MOUNTCASHEL PLC

description  
PROPOSED ROOF PLAN

**bm** architects  
burgess mean architects  
3 cowper road  
london  
SW1P 1QA

t: 0208 544 0777 e: burgess.mean@btinternet.com

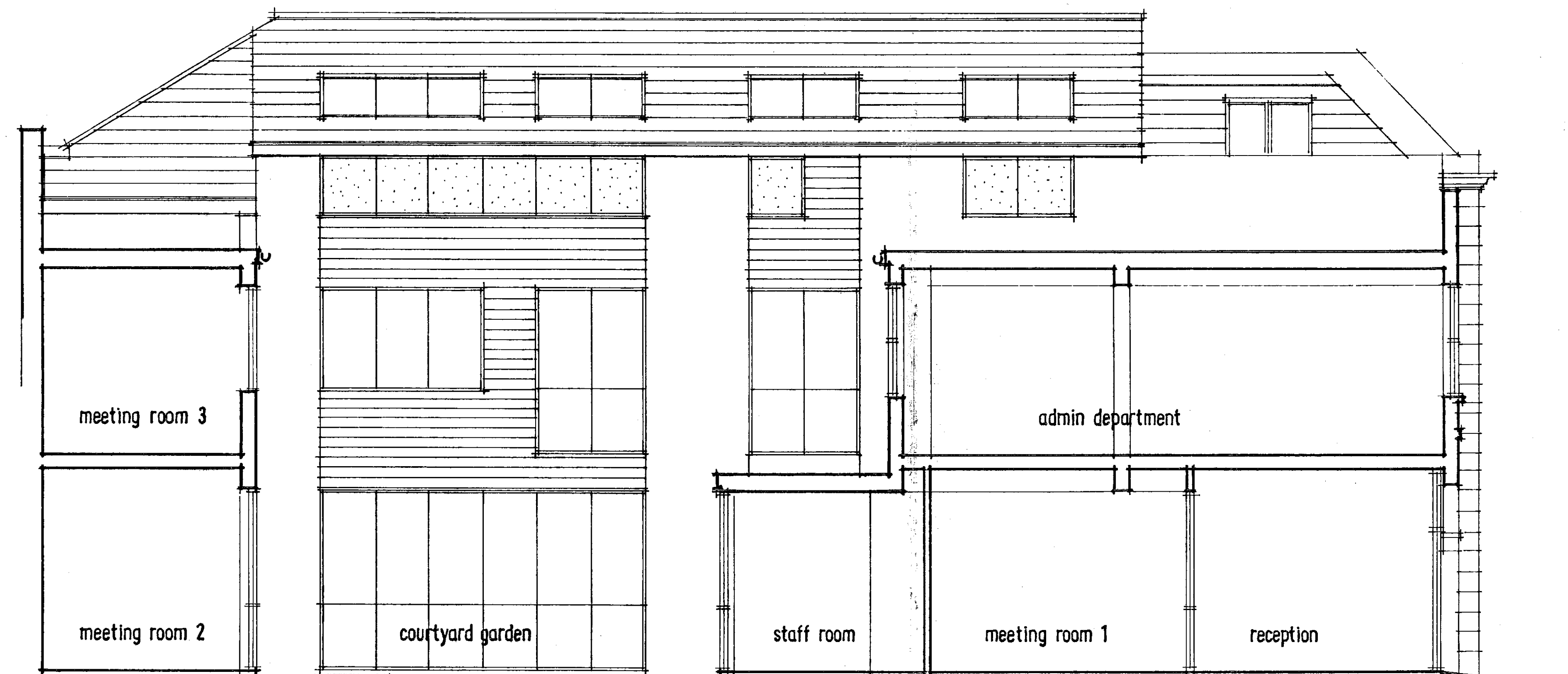
date: 28/4/00 scale: 1:50 project: 20305 drawing: 004 revision: 4  
drawn by: ddb checked: ddb

Tp60/2818  
⑤



FRONT ELEVATION

A—B



LONGITUDINAL SECTION

A—B

R.B.K. & C.  
TOWN PLANNING  
13 MAR 2001  
RECEIVED

Revision B - 27/7/00 - Amended to suit conservation officers comments.  
Revision A - 6/7/00 - Amended to suit planning officers comments.

title  
27 KELSO PLACE · KENSINGTON · LONDON W8

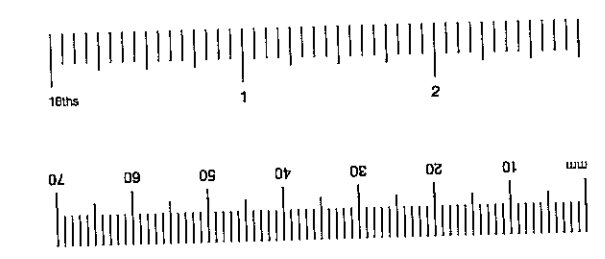
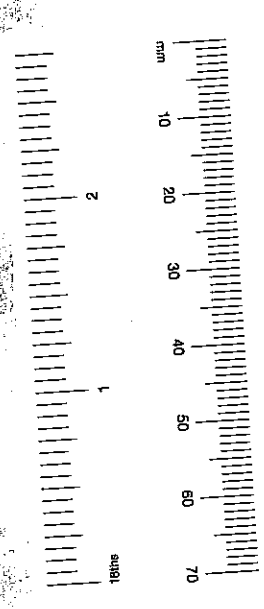
client  
MOUNTCASHEL PLC

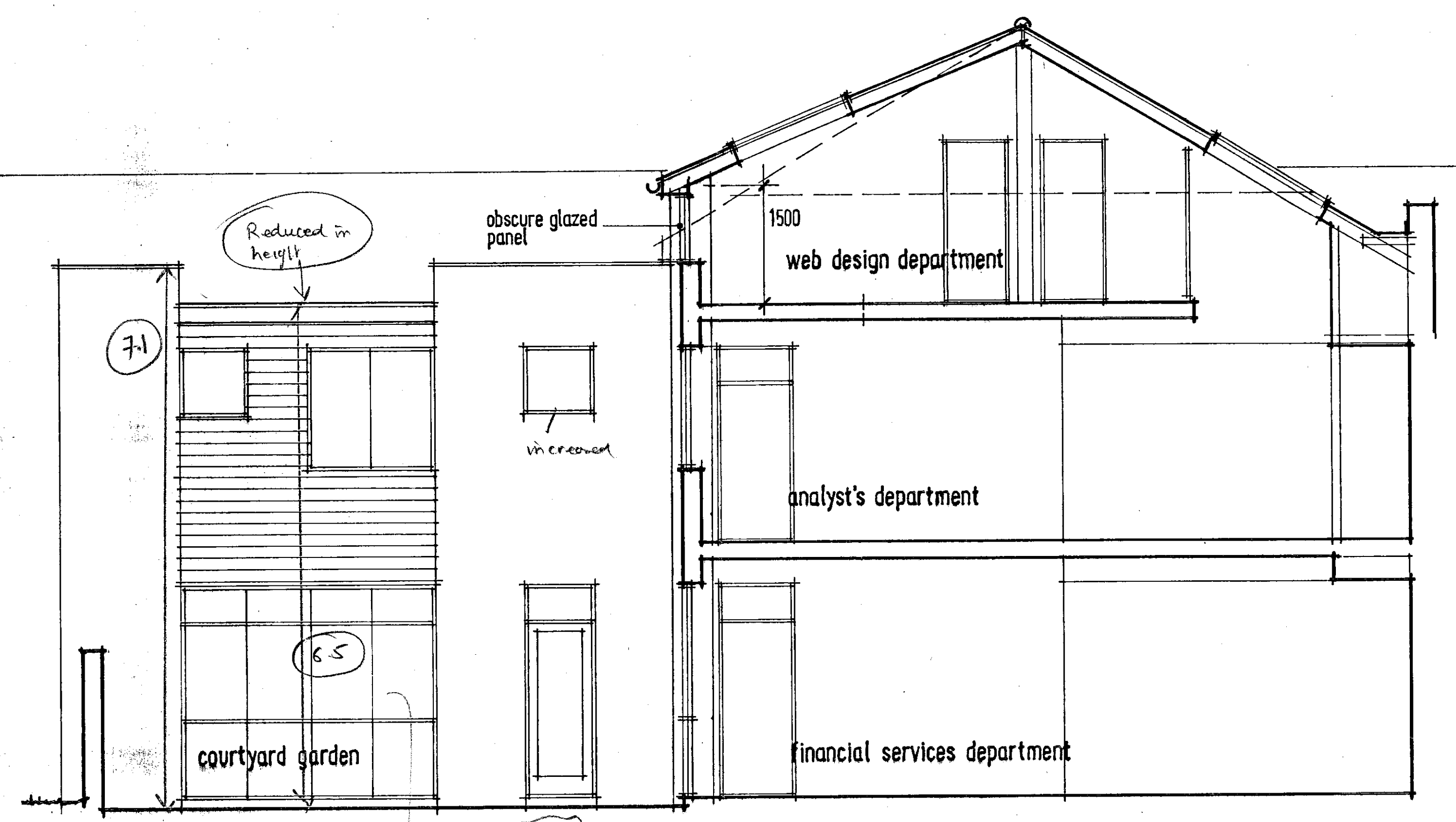
description  
PROPOSED FRONT ELEVATION + LONGITUDINAL SECTION

**bm** architects  
burgess mean architects  
3 cowper road  
london  
sw19 1aa

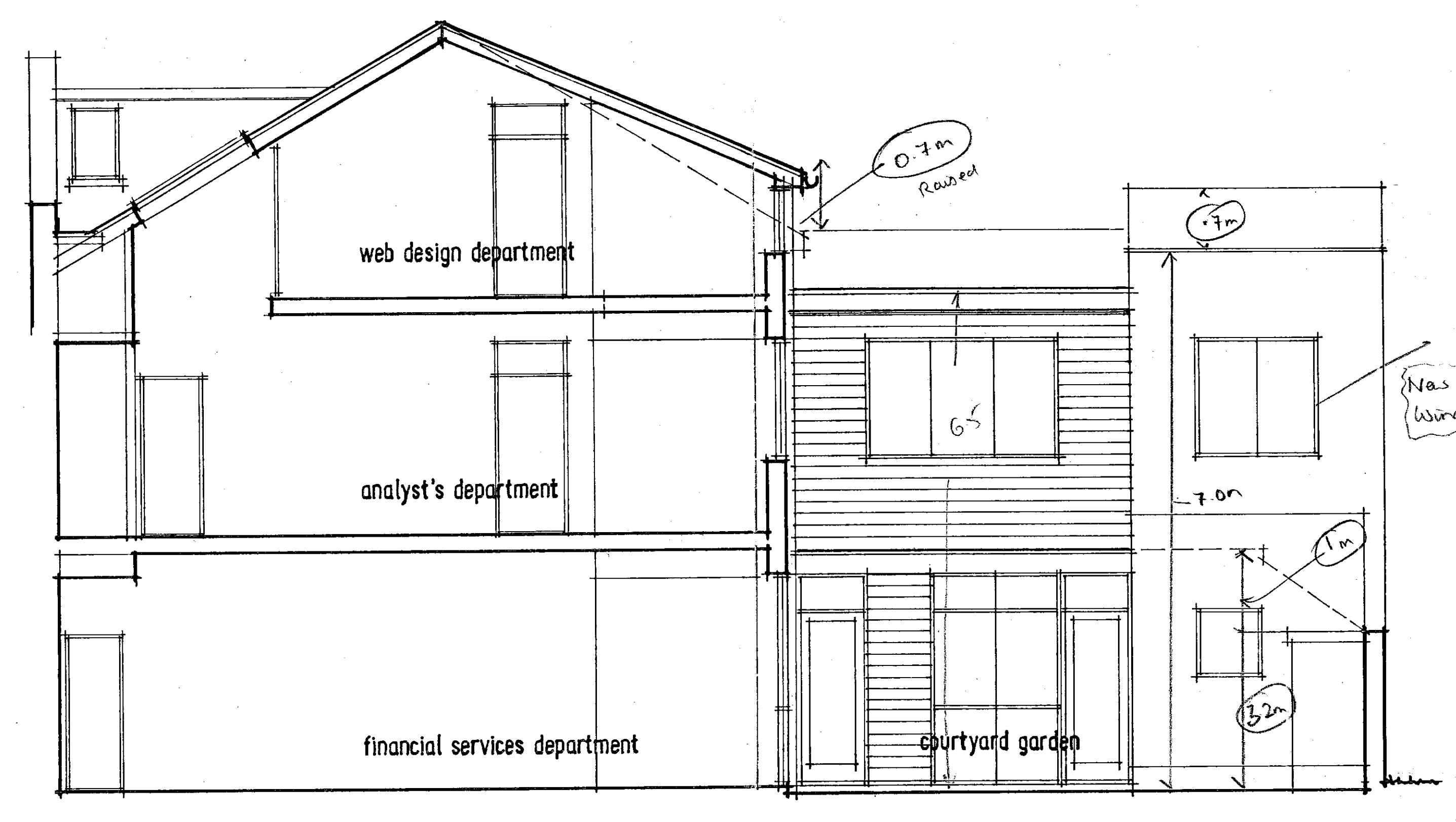
t: 0208 544 0777 e: burgess.mean@btinternet.com

date: 1/8/00 scale: project drawing revision  
drawn by: qpb 1:50 20305 005 B  
checked:





PROPOSED CROSS-SECTION A-A



PROPOSED CROSS-SECTION B-B



COURTYARD PERSPECTIVE (N.T.S.)

R.B.K. & C.  
TOWN PLANNING  
13 MAR 2001  
RECEIVED

Revision B - 27/7/00 - Amended to suit conservation officers' comments.  
Revision A - 6/7/00 - Amended to suit planning officers' comments.

27 KELSO PLACE · KENSINGTON · LONDON W8

MOUNTCASHEL PLC

PROPOSED CROSS-SECTIONS + COURTYARD PERSPECTIVE

**bm** architects  
burgess mean architects  
3 cowper road  
london  
SW1P 1QA

t: 0208 544 0777 e: burgess.mean@btinternet.com

date: 1/6/00 scale: 1:50 project: 20305 drawing: 006 revision: ⑥

