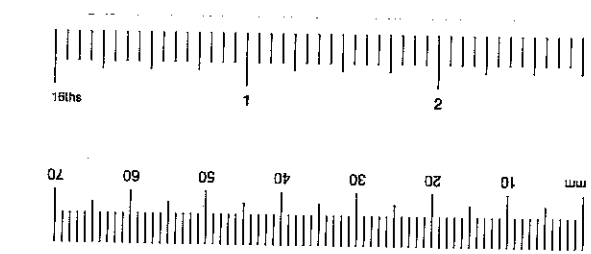
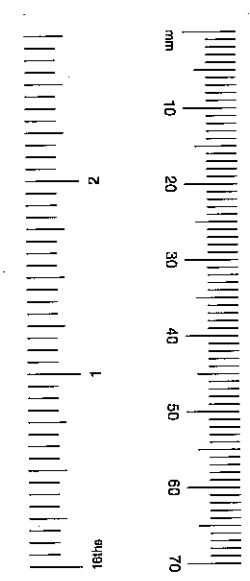


PROPOSED FIRST FLOOR PLAN



F.B.K. & C.
TOWN PLANNING
17 JAN 2001
RECEIVED

SUPERSEDED

pp 00/02518/UR
R.C.V. - A.

Revision A - 4/1/01 - Amended to suit planning officers comments

title
27 KELSO PLACE · KENSINGTON · LONDON W8

client
MOUNTCASHEL PLC

description
PROPOSED FIRST FLOOR PLAN



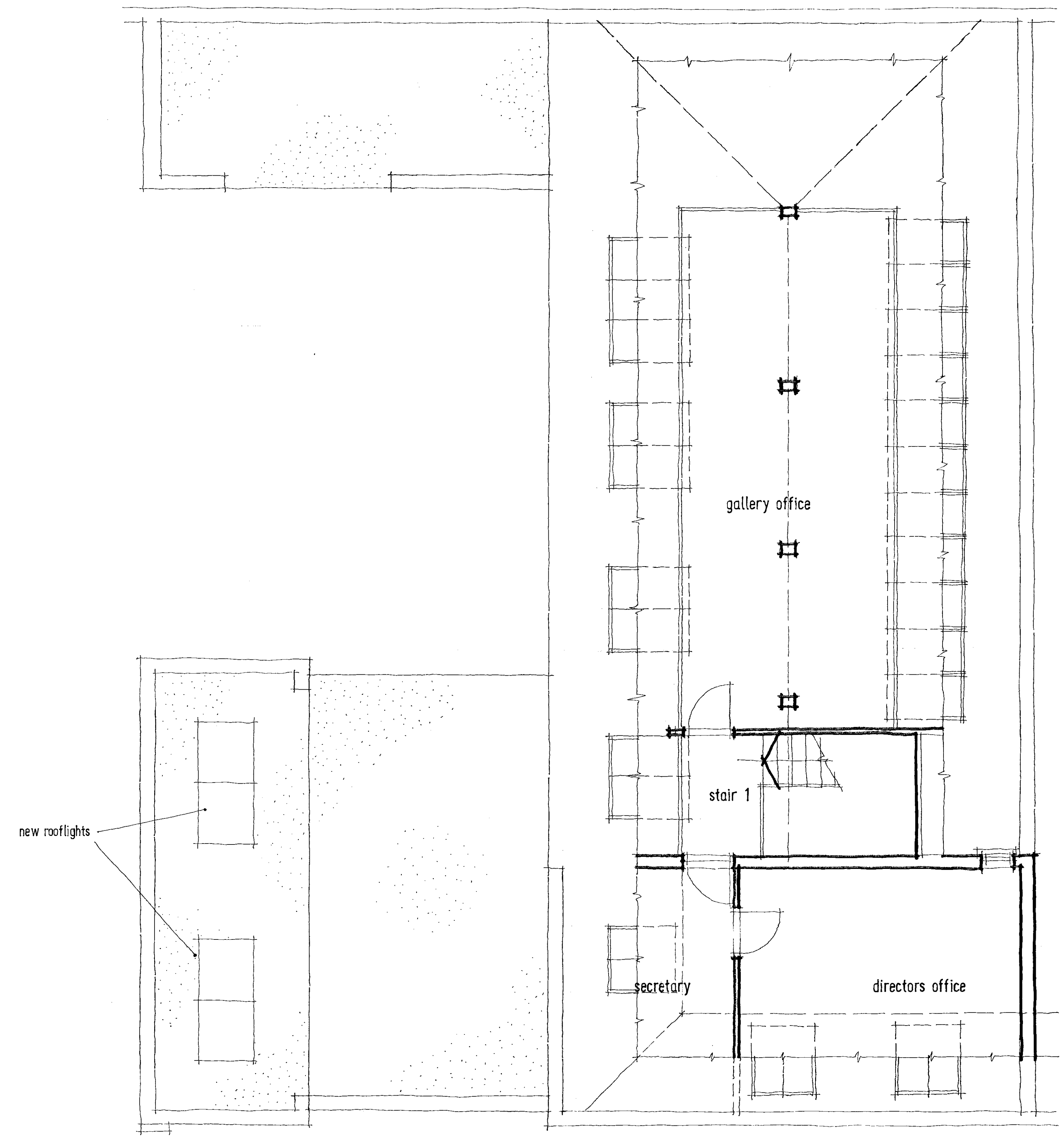
burgess mean architects

3 cowper road
london
sw19 1aa

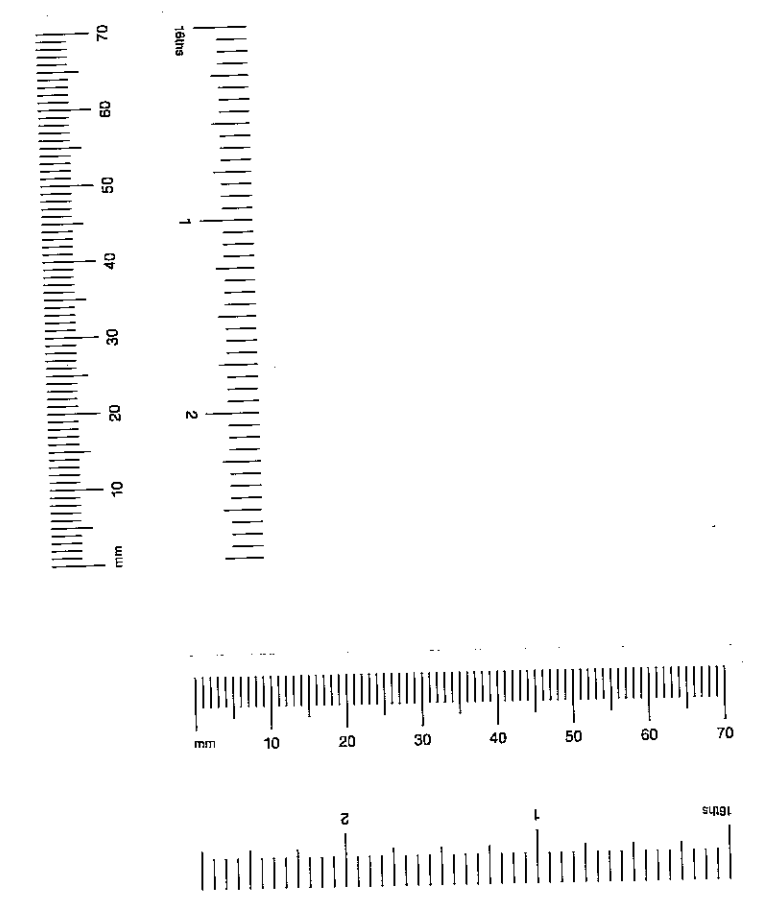
t: 0208 544 0777

e: burgess.mean@btinternet.com

date	21/9/00	scale	1:50	project	20305	drawing	011	revision	A
drawn by	dpb	checked by							



PROPOSED SECOND FLOOR PLAN



R.B.K. & O.
 TOWN PLANNING
 19 JAN 2001
 RECEIVED

SUPERSEDED
 pp/00/02818/1/2
 RCR - A

Revision A - 4/1/01 - Rooflights added to civil planners comments. Roof corrected.

27 KELSO PLACE · KENSINGTON · LONDON W8

Client
 MOUNTCASHEL PLC

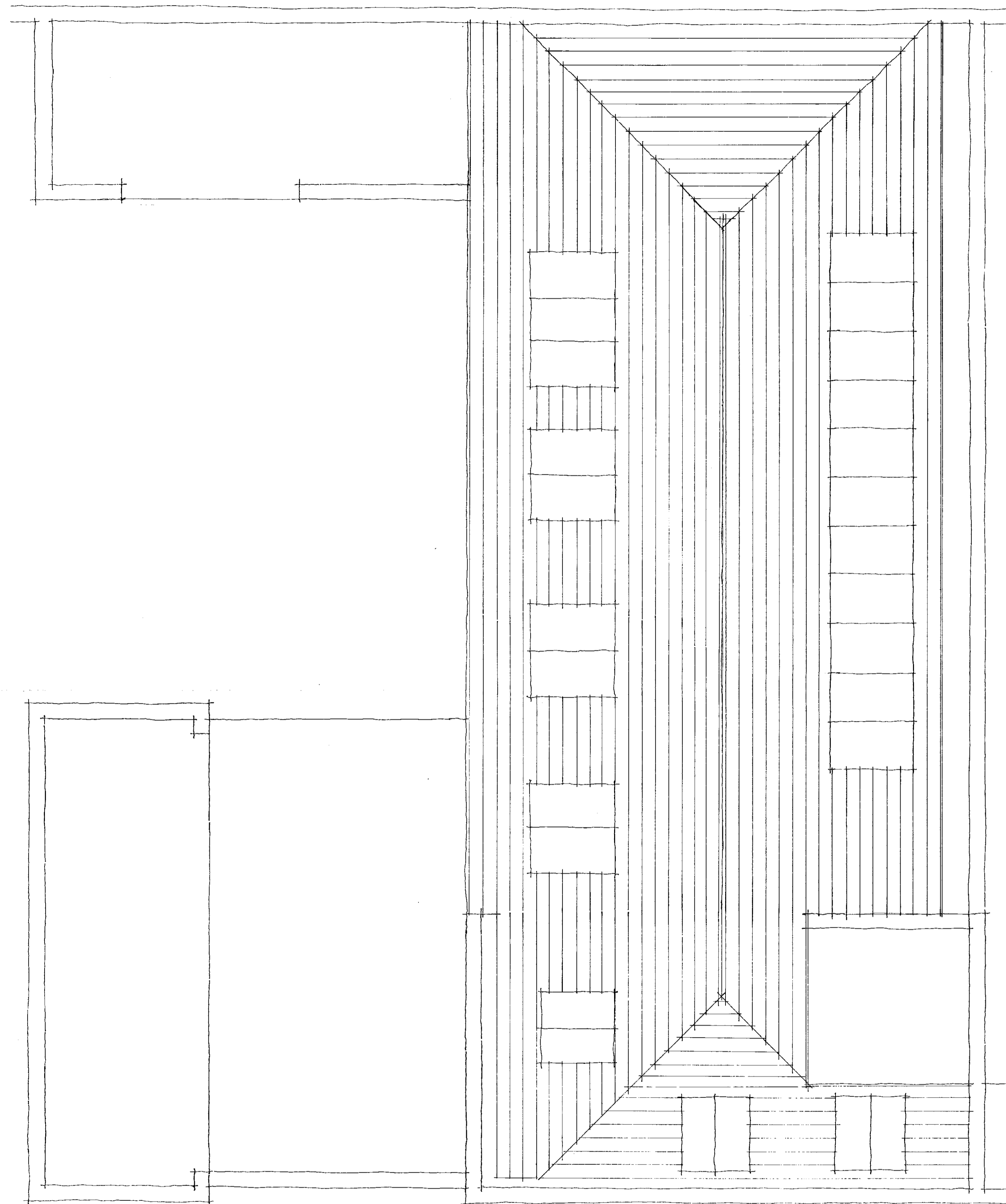
Description
 PROPOSED SECOND FLOOR PLAN

bm architects
 burgess mean architects
 3 cowper road
 london
 SW19 1QA

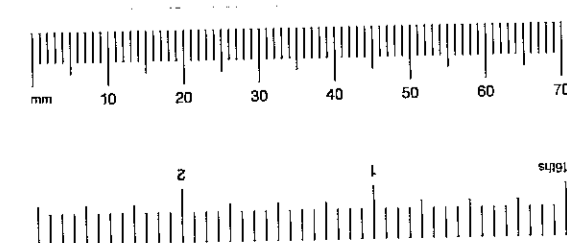
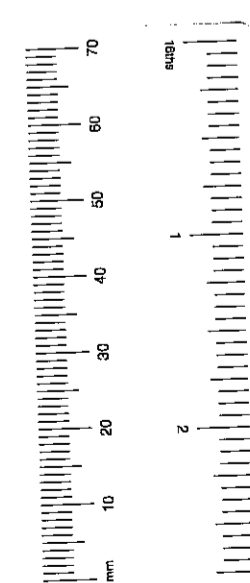
t: 0208 544 0777 f: 0208 544 0777 e: burgess.mean@btinternet.com

DATE	24/9/00	SCALE	1:50	PROJECT	20305	DRAWING	012	REVISION	A
DRAWN BY	cpb	CHECKED BY							

Tp0012818
(43)



PROPOSED ROOF PLAN



R.B.K. & C.
TOWN PLANNING
19 JAN 2001
RECEIVED

SUPERSEDED
pp100102818/102
REV. A

Revision A - 10/1/01 - Roof over front building corrected to suit site survey.

27 KELSO PLACE · KENSINGTON · LONDON W8

client
MOUNTCASHEL PLC

description
PROPOSED ROOF PLAN

bm architects
burgess mean architects
3 cowper road
london
sw19 1QA

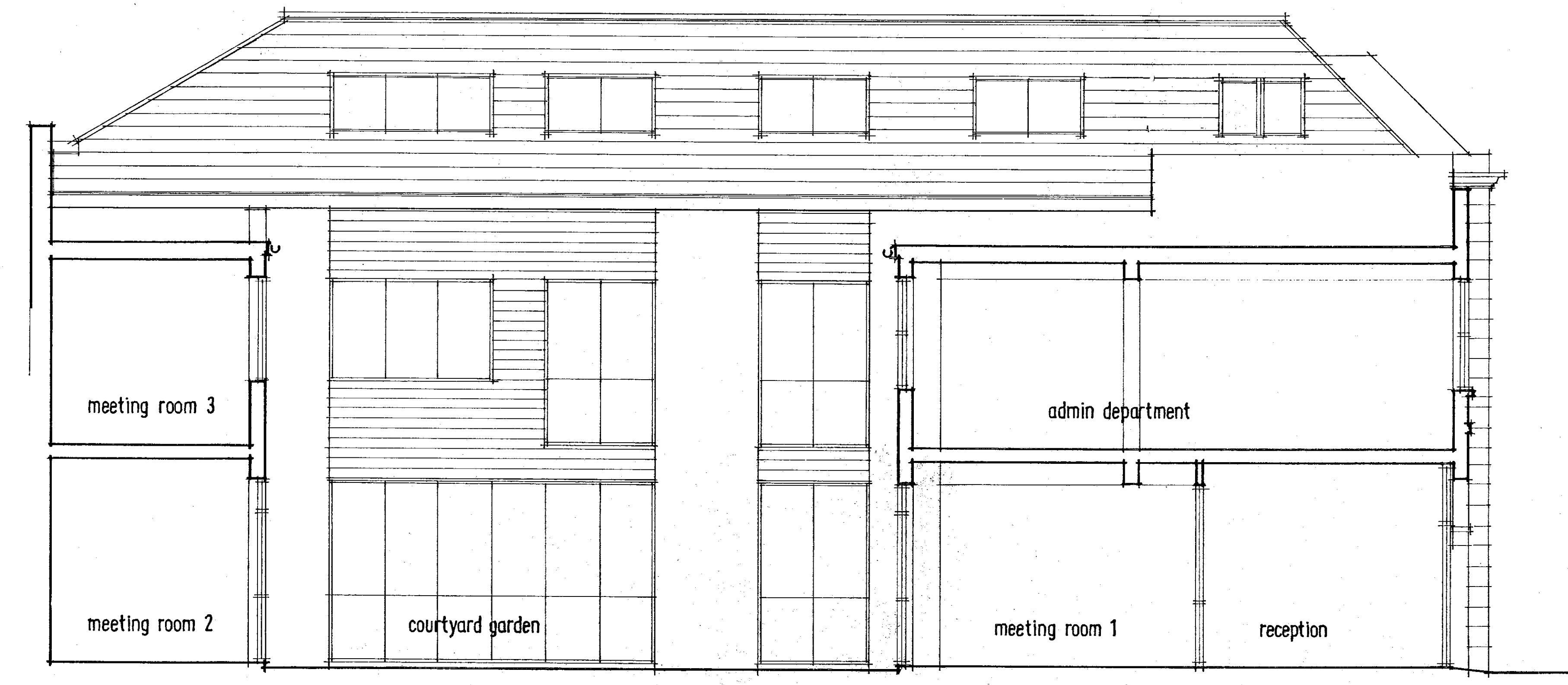
t: 0208 544 0777 e: burgess.mean@btinternet.com

date 21/9/00
drawn by opp
checked opp
scale 1:50
project 20305
drawing 013
revision A



FRONT ELEVATION

A—B



LONGITUDINAL SECTION

A—B

R.B.K. & C.
 TOWN PLANNING
 12 JAN 2001
 RECEIVED

SUPERMARKET

TP/00/2818/1/R
 R.B.-A.

Revision A - 4/1/01 - Amended to suit planning officers comments. Roof corrected.

27 KELSO PLACE · KENSINGTON · LONDON W8

client
 MOUNTCASHEL PLC

description
 PROPOSED FRONT ELEVATION + LONGITUDINAL SECTION



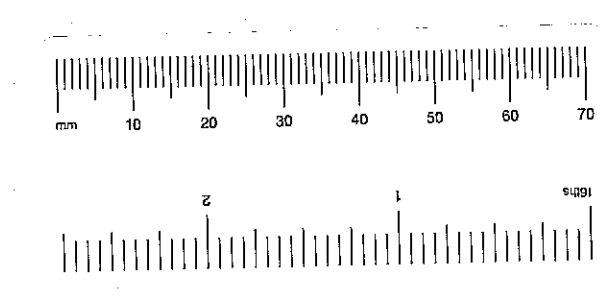
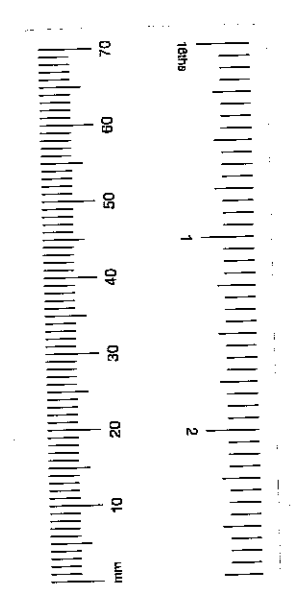
burgess mean architects

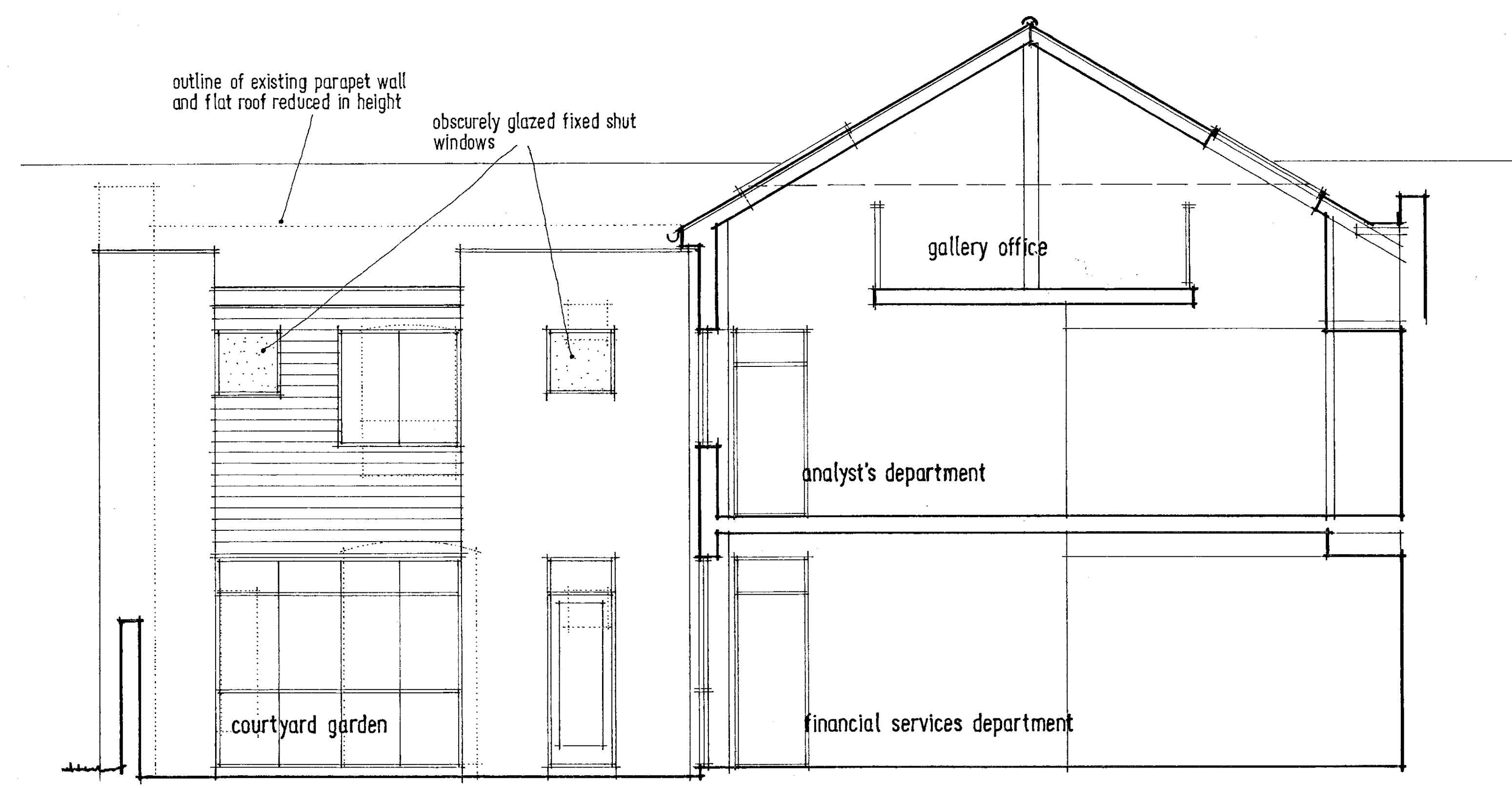
3 cowper road
 london
 SW19 1QQ

t: 0208 544 0777

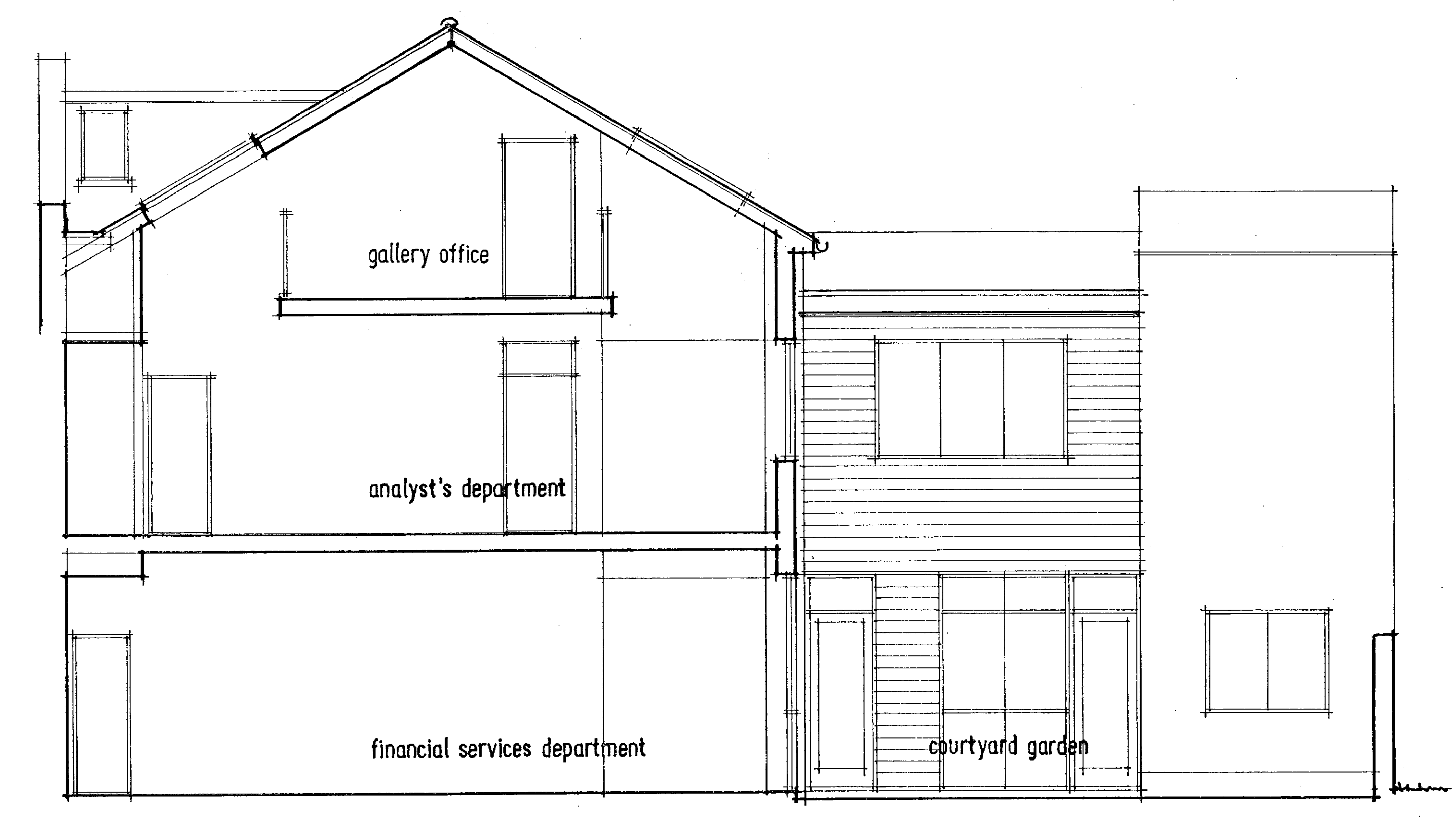
e: burgess.mean@btinternet.com

date	drawn by	checked	scale	project	drawing	revision
21/9/00	apb	apb	1:50	20305	014	A

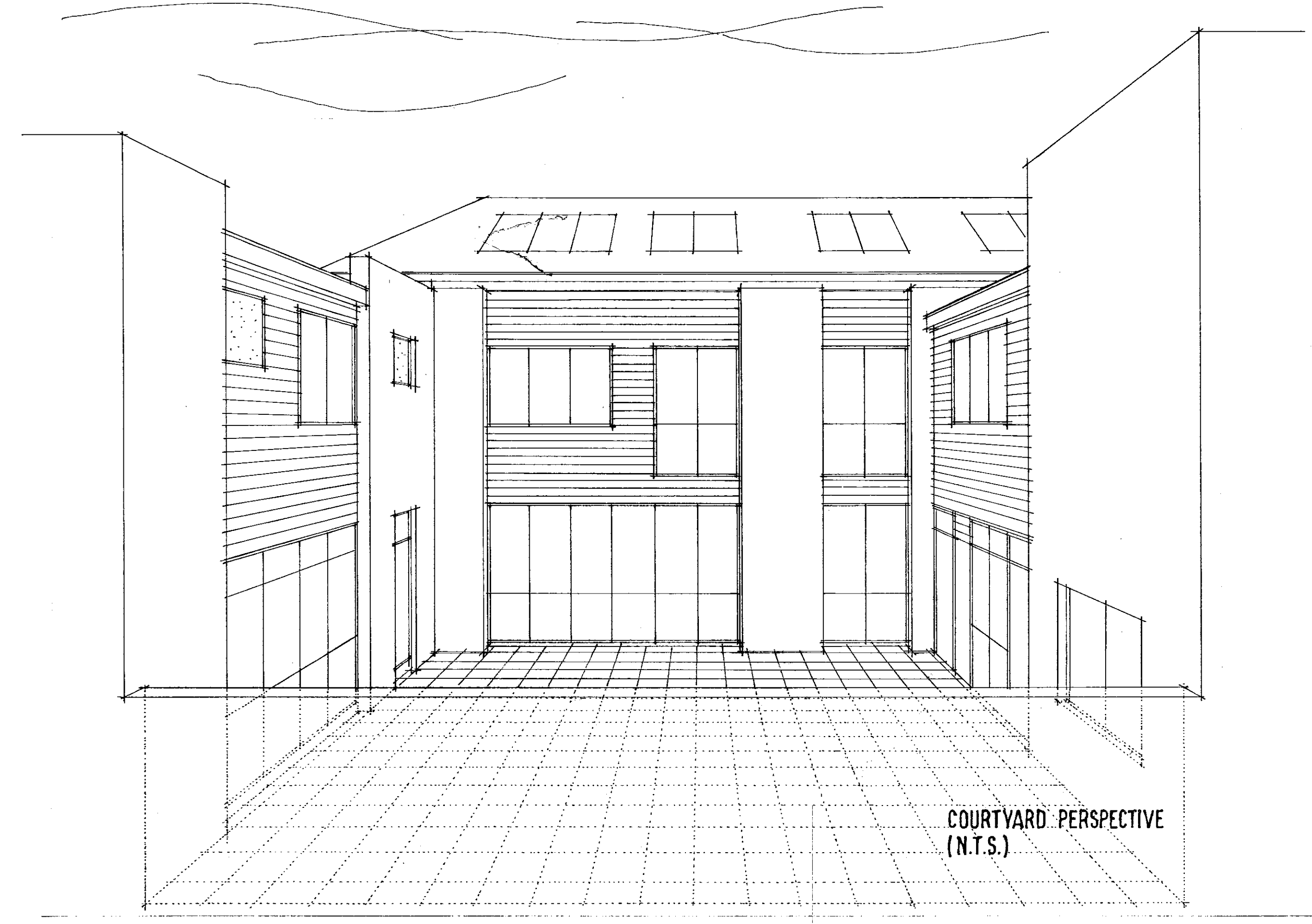




PROPOSED CROSS-SECTION A-A



PROPOSED CROSS-SECTION B-B



H.B.K. & C.
TOWN PLANNING
19 JAN 2001
RECEIVED

SUPERCEDED

pp100/02818/16
rev. n

Revision A - 4/1/01 - Amended to suit planning officers comments. Roof corrected.

27 KELSO PLACE · KENSINGTON · LONDON W8

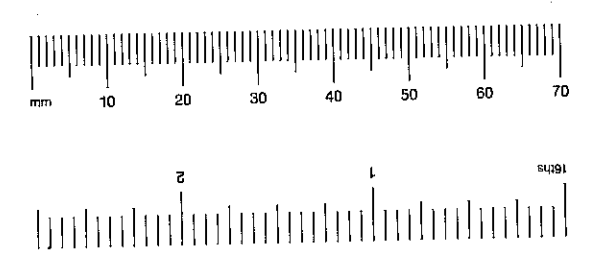
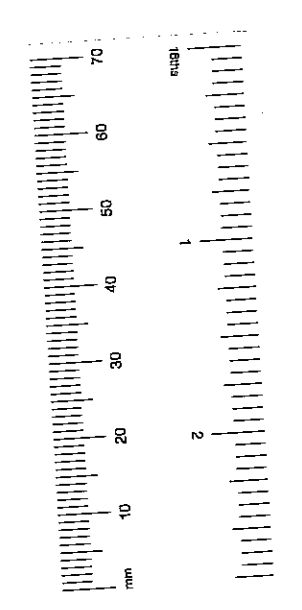
MOUNTCASHEL PLC

PROPOSED CROSS-SECTIONS + COURTYARD PERSPECTIVE

bm architects
3 cowper road
london
SW19 1QA

t: 0208 544 0777 e: burgess.mean@btinternet.com

date: 21/9/00	scale: 1:50	project: 20305	drawing: 015	revision: A
drawn by: qtb				
checked:				

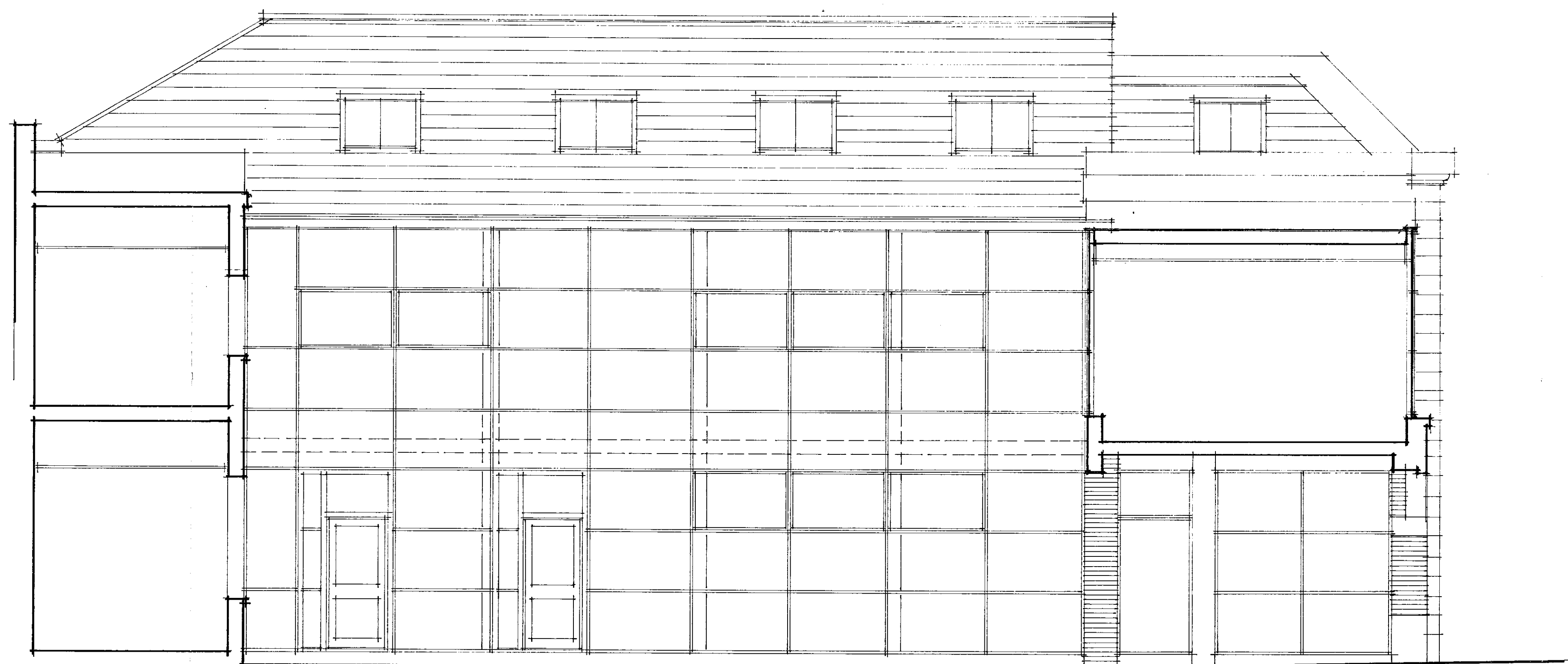


TP/00/2818
51



FRONT ELEVATION AS EXISTING

A ← → B



LONGITUDINAL SECTION AS EXISTING

A ← → B

R.B.K. & C.
TOWN PLANNING
- 8 DEC 2000
RECEIVED

PP002818

SLIDERSHEET

title
27 KELSO PLACE · KENSINGTON · LONDON W8

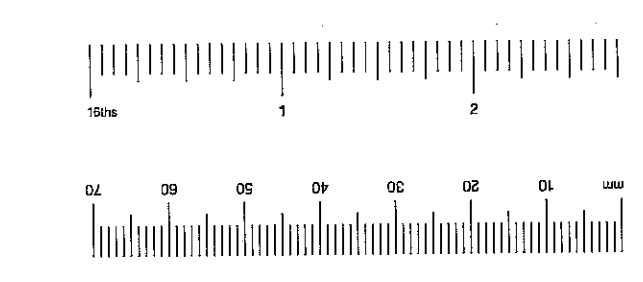
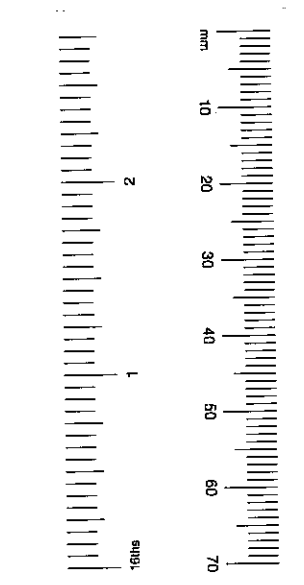
client
MOUNTCASHEL PLC

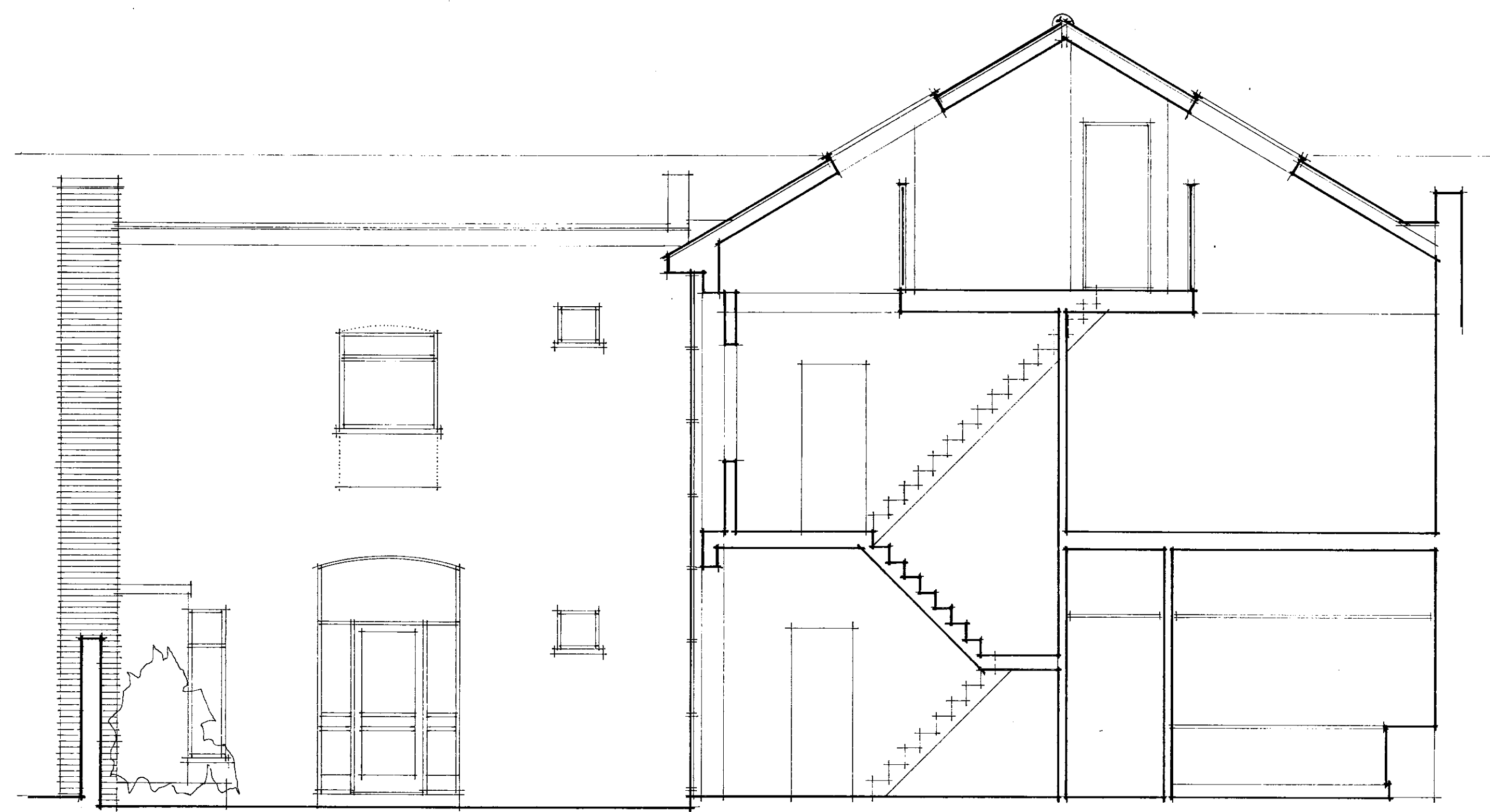
description
EXISTING FRONT ELEVATION + LONGITUDINAL SECTION

burgess mean architects
3 cowper road
london
SW19 1AA

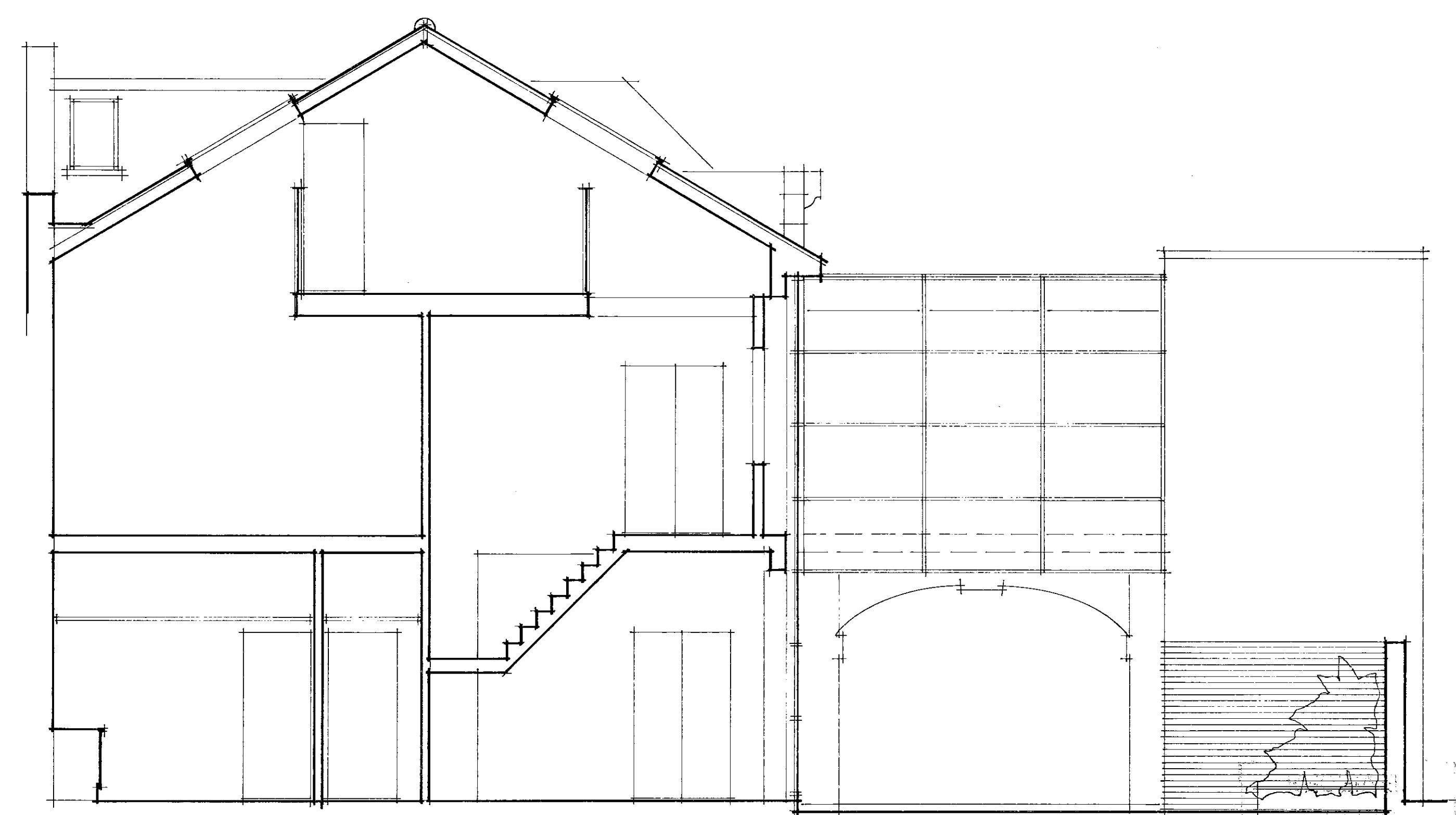
t: 0208 544 0777 e: burgess.mean@btinternet.com

done: December 2000 scale: project: drawing: revision:
drawn by: qpb
checked: qpb | 1:50 | 98216 | 003





EXISTING CROSS-SECTION A-A

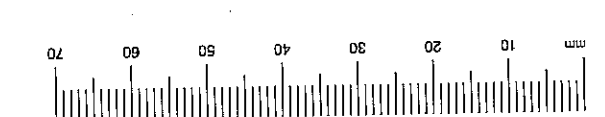
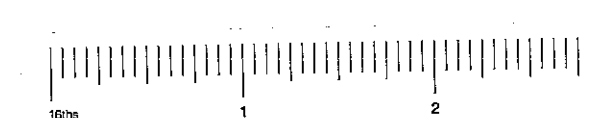
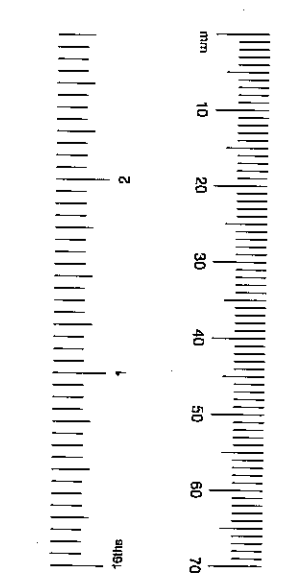


EXISTING CROSS-SECTION B-B

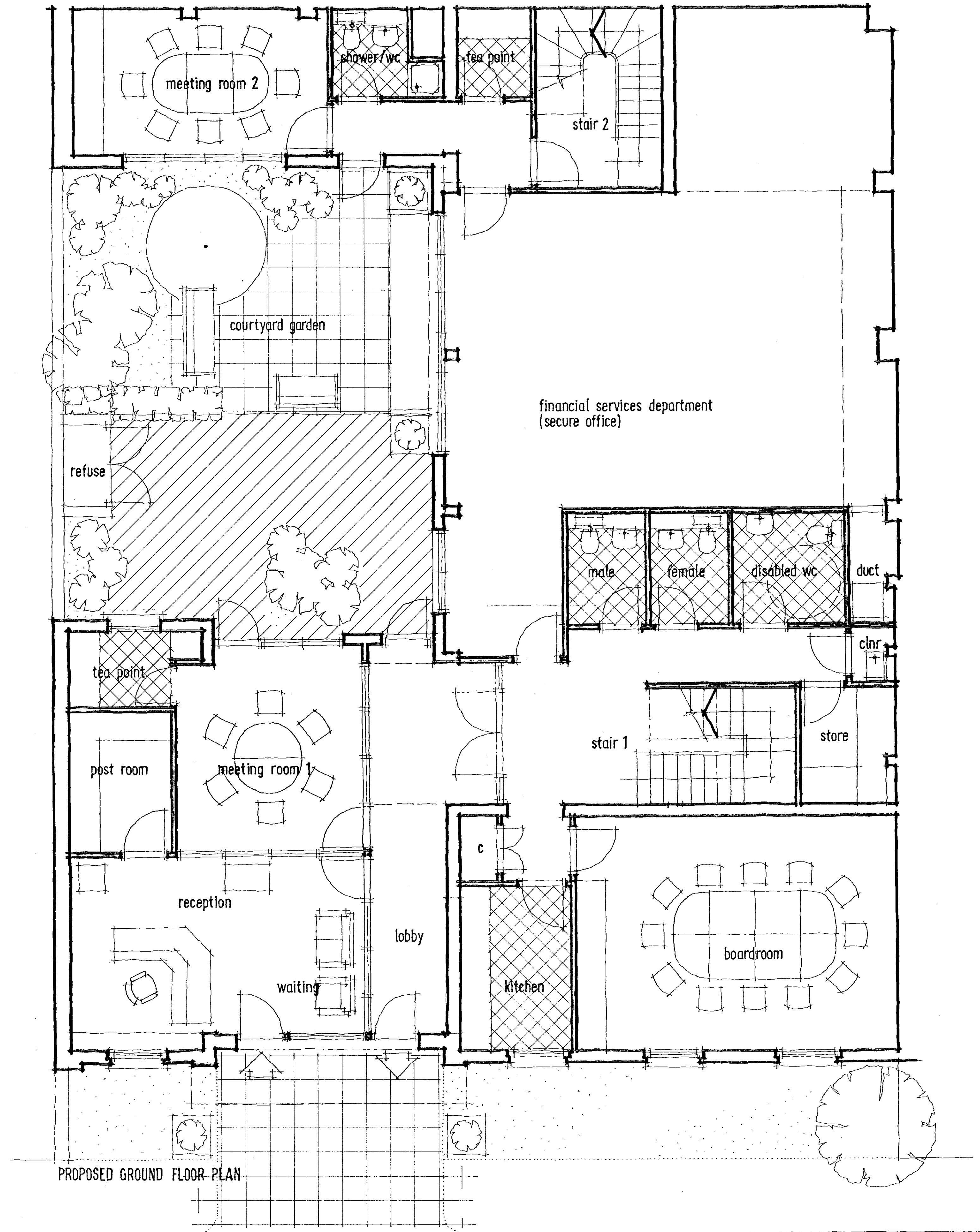
R.B.K. & C.
TOWN PLANNING
- 8 DEC 2000
RECEIVED

PP002818

SUPERSECRET



title			
27 KELSO PLACE · KENSINGTON · LONDON W8			
client			
MOUNTCASHEL PLC			
description			
EXISTING CROSS-SECTIONS A-A + B-B			
burgess mean architects		3 cowper road london sw19 1aa	
t: 0208 544 0777 f: 0208 544 0777 e: burgess.mean@btinternet.com			
date:	December 2000	scale:	1:50
drawn by:	cpb	project:	98216
checked:		drawing:	004
revision:			



PROPOSED GROUND FLOOR PLAN

R.B.K. & C.
TOWN PLANNING
18 JUL 2000
RECEIVED
PP002818

011
001

title
27 KELSO PLACE · KENSINGTON · LONDON W8

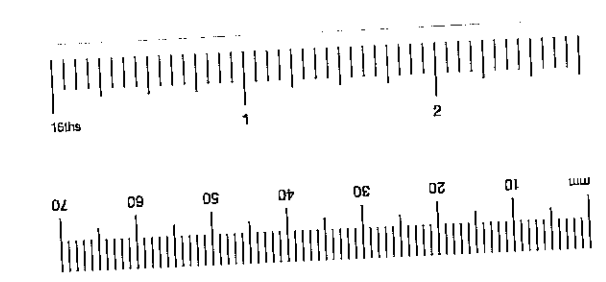
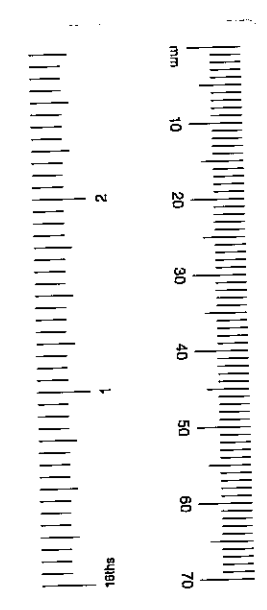
client
MOUNTCASHEL PLC

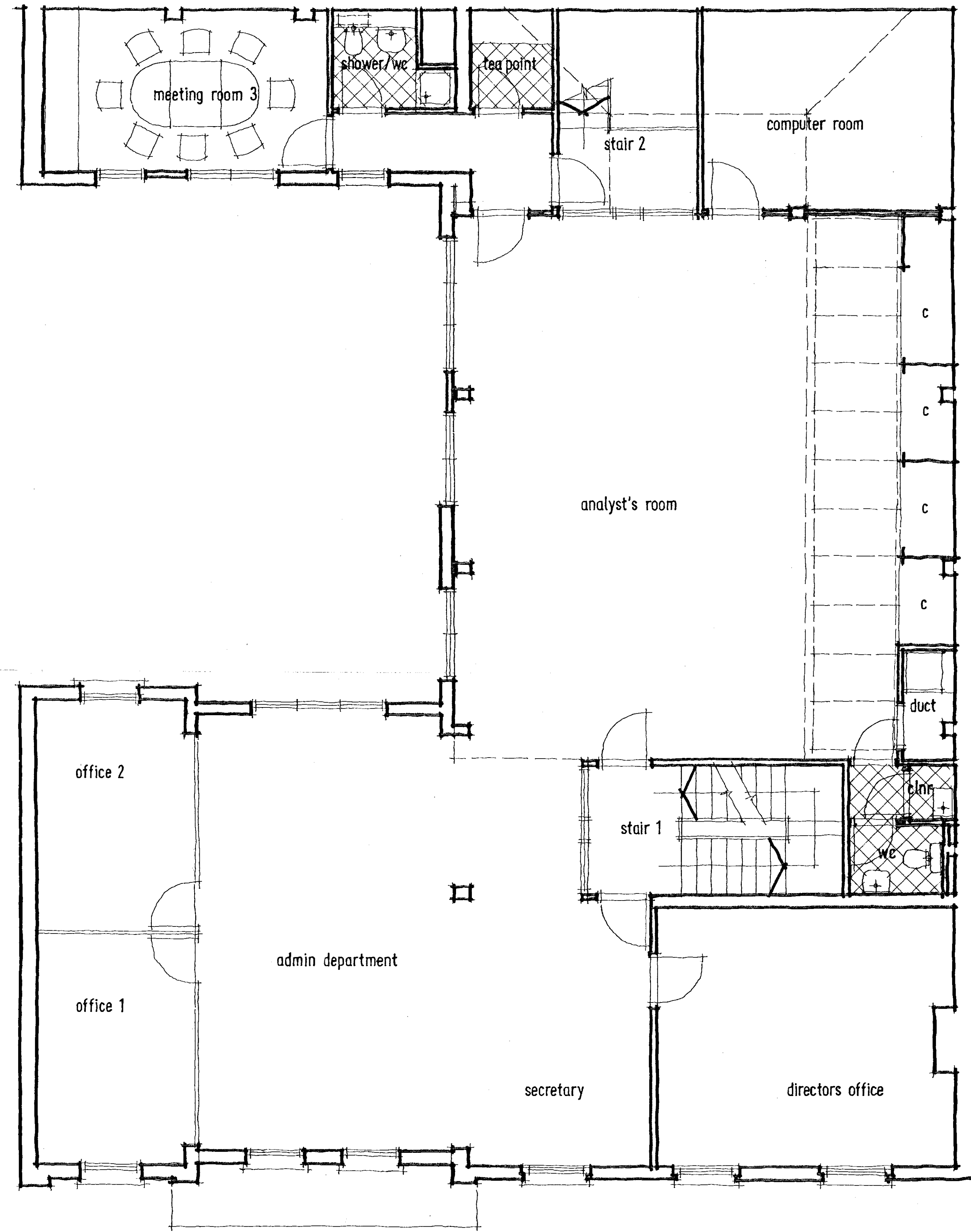
description
PROPOSED GROUND FLOOR PLAN

bm architects
burgess mean architects
3 cowper road
london
SW19 1QA

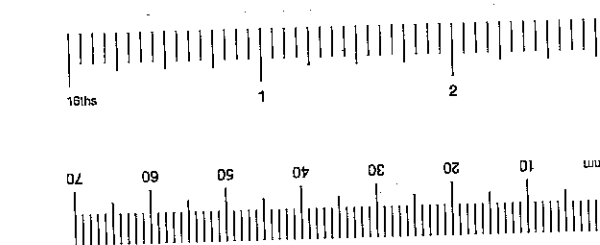
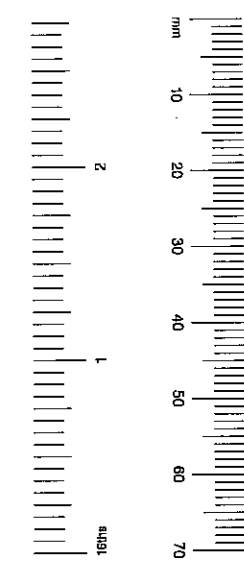
t: 0208 544 0777 e: burgess.mean@btinternet.com

date	21/9/00	scale	1:50	project	20305	drawing	010	revision	
drawn by	ppb	checked							





PROPOSED FIRST FLOOR PLAN



RECEIVED
18 OCT 2000

R.B.K. & C.
TOWN PLANNING
18 OCT 2000
RECEIVED
PP002818

SUPERSEDED

title
27 KELSO PLACE · KENSINGTON · LONDON W8

client
MOUNTCASHEL PLC

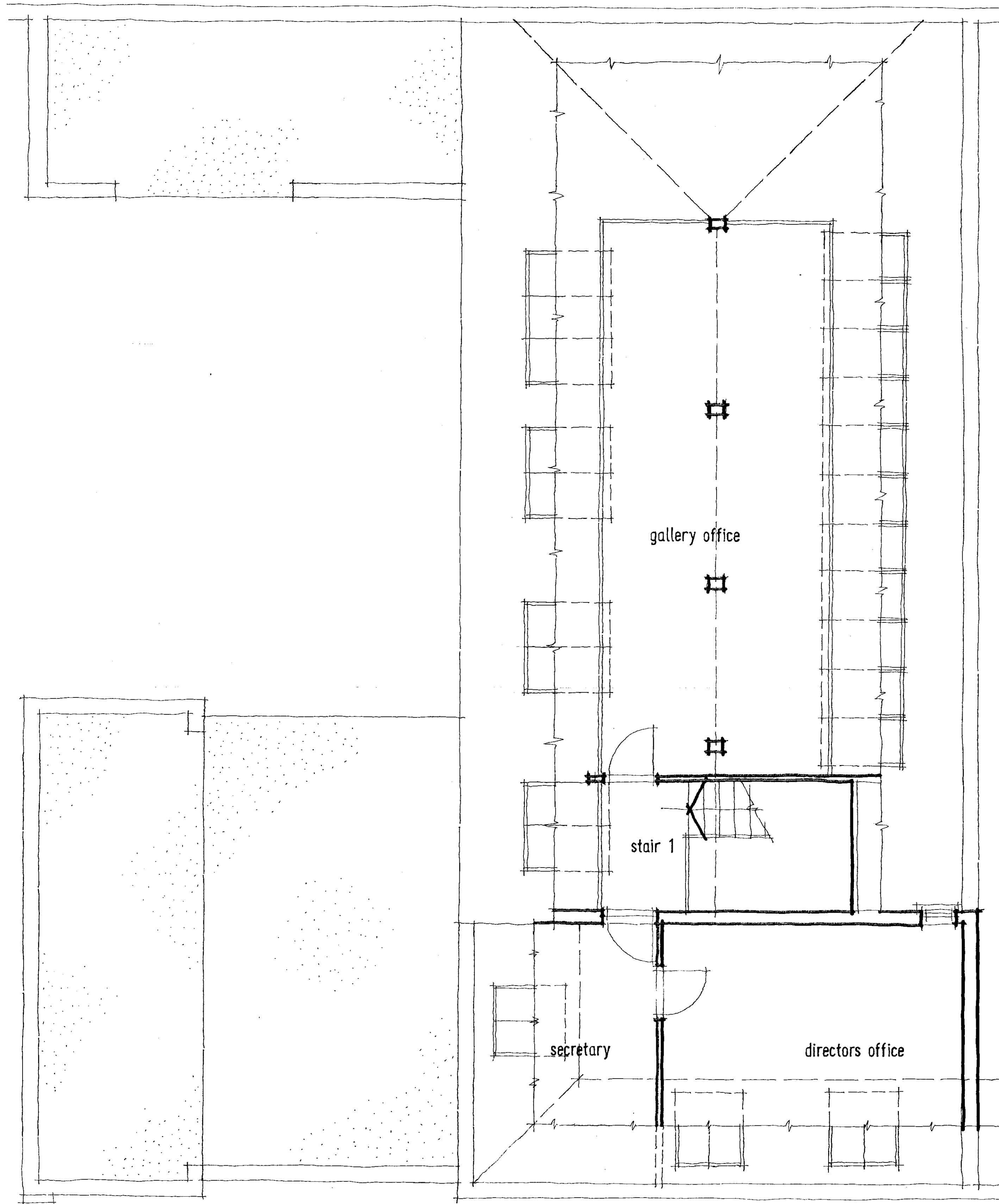
description
PROPOSED FIRST FLOOR PLAN

bm architects
3 cowper road
london
sw19 1aa

burgess mean architects

t: 0208 544 0777 e: burgess.mean@btinternet.com

date: 21/9/00 scale: 1:50 project: 20305 drawing: 011 revision:



PROPOSED SECOND FLOOR PLAN

RECEIVED
18 OCT 2000

R.B.K. & C.
TOWN PLANNING
18 OCT 2000
RECEIVED

PP.002818

SUPERSEDED

title
27 KELSO PLACE · KENSINGTON · LONDON W8

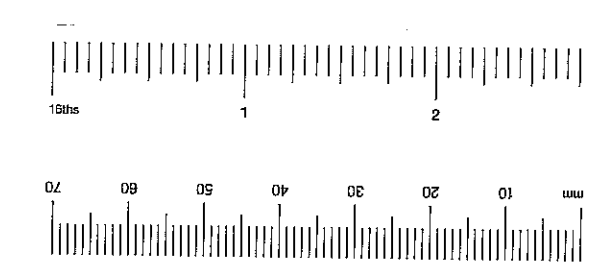
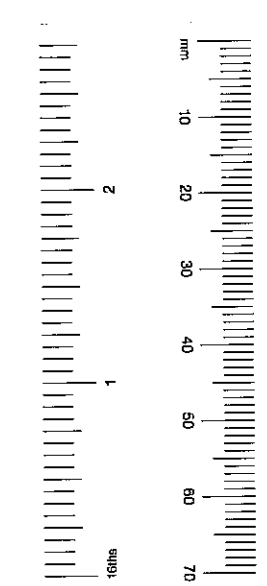
client
MOUNTCASHEL PLC

description
PROPOSED SECOND FLOOR PLAN

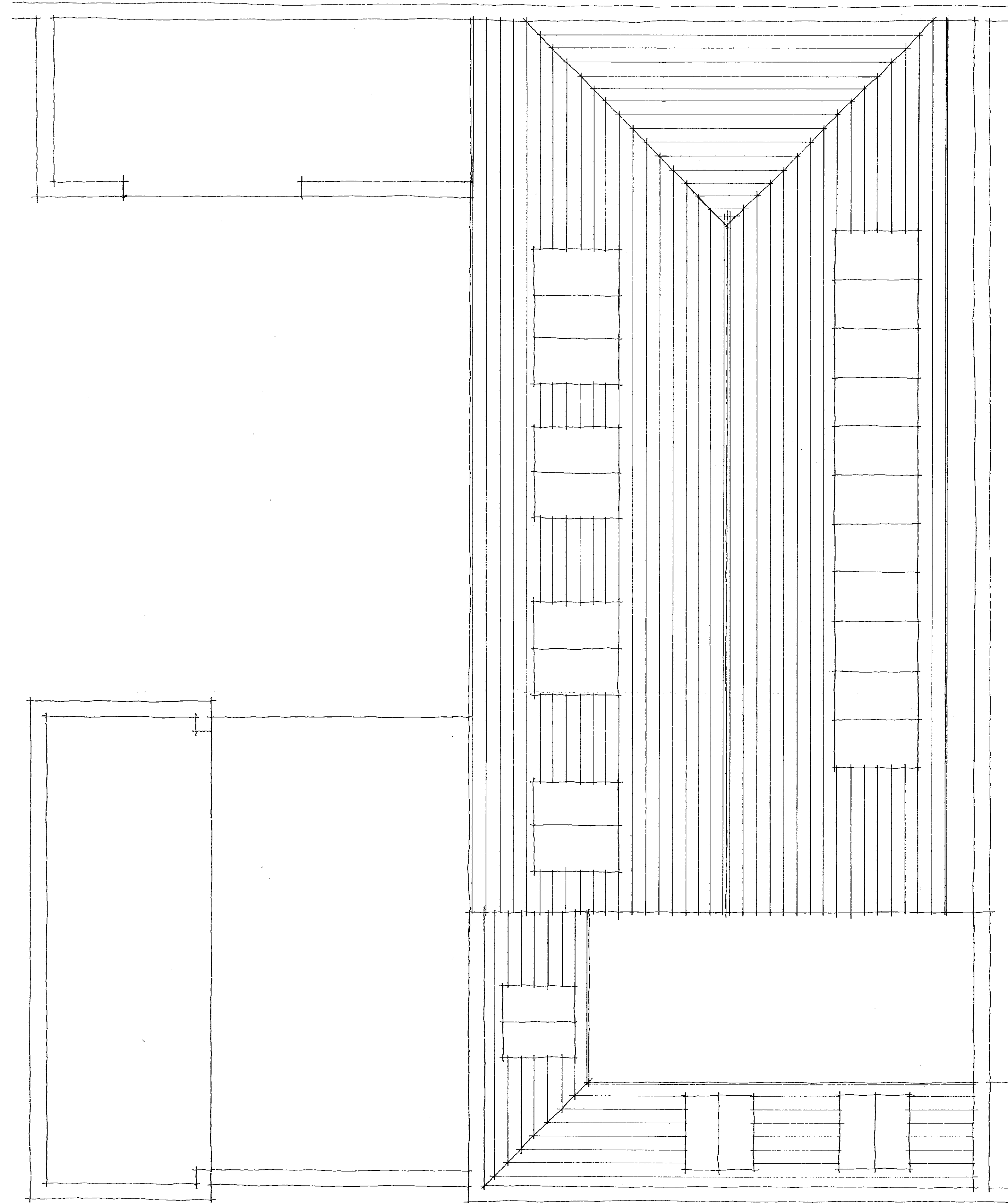
bm architects
burgess mean architects
3 cowper road
london
SW19 1QA

t: 0208 544 0777 f: 0208 544 0777 e: burgess.mean@btinternet.com

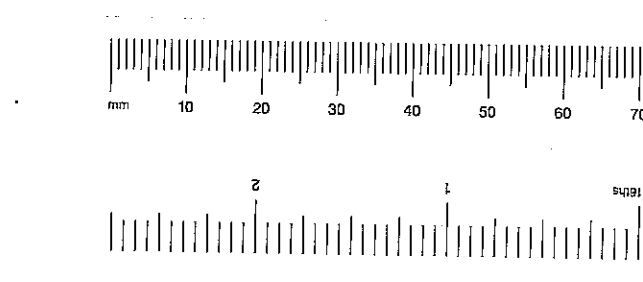
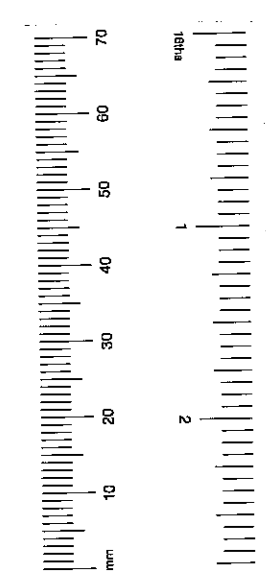
date 21/9/00	scale 1:50	project 20305	drawing 012	revision
drawn by cjb				



TP/00/2318
56



PROPOSED ROOF PLAN



R.B.K. & C.
TOWN PLANNING
18 UCL 2000
RECEIVED

PP002318

SUPERSEDED

title
27 KELSO PLACE · KENSINGTON · LONDON W8

client
MOUNTCASHEL PLC

description
PROPOSED ROOF PLAN

bm architects
burgess mean architects
3 cowper road
london
sw19 1aa

t: 0208 544 0777 e: burgess.mean@btinternet.com

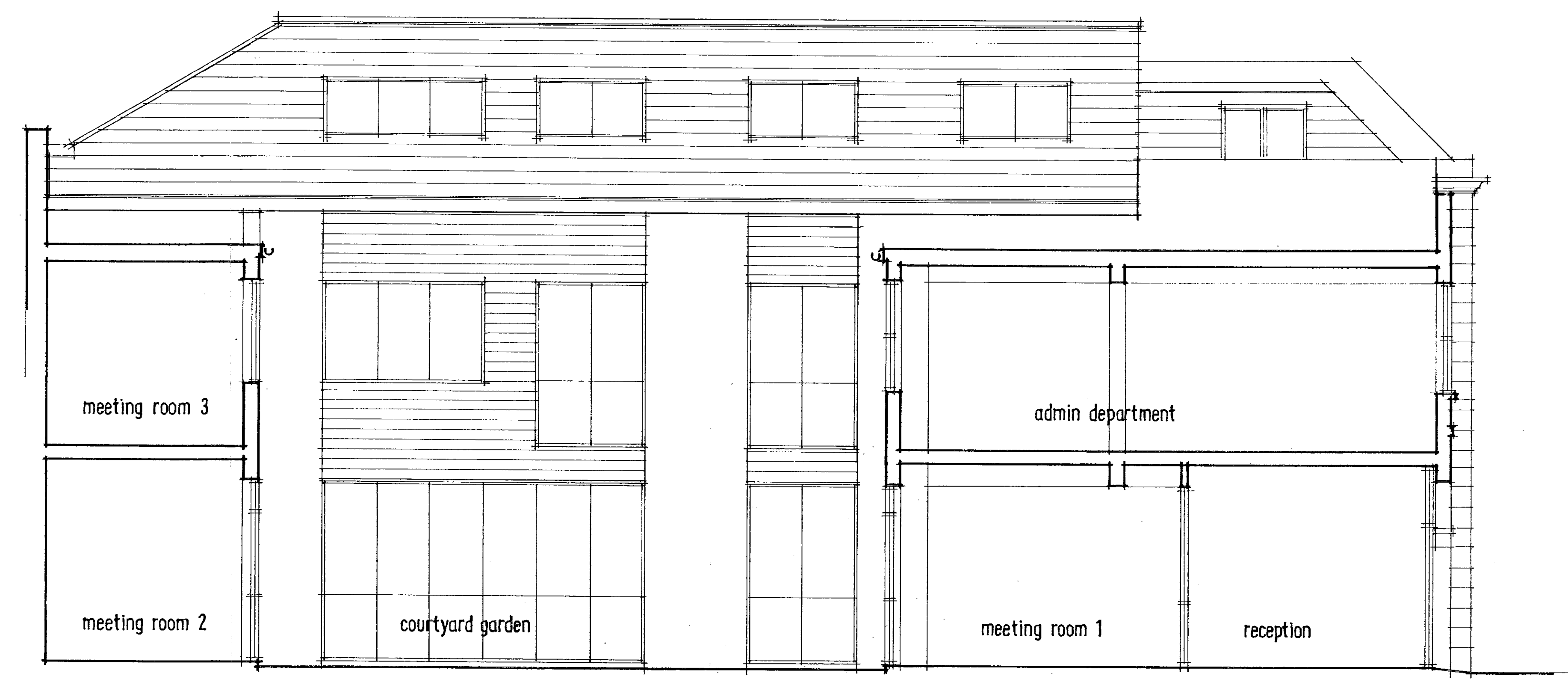
date: 21/4/00
drawn by: opp
checked: opp
scale: 1:50
project: 20305
drawing: 013
revision:

TP/00/2318
(51)



FRONT ELEVATION

A-B



LONGITUDINAL SECTION

A-B

RECEIVED
18 JUL 2000

R.B.K. & C.
TOWN PLANNING
18 JUL 2000
RECEIVED

PP002810

SUPERSEDED

title
27 KELSO PLACE · KENSINGTON · LONDON W8

client
MOUNTCASHEL PLC

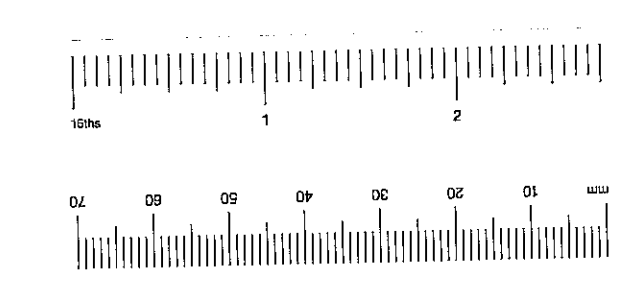
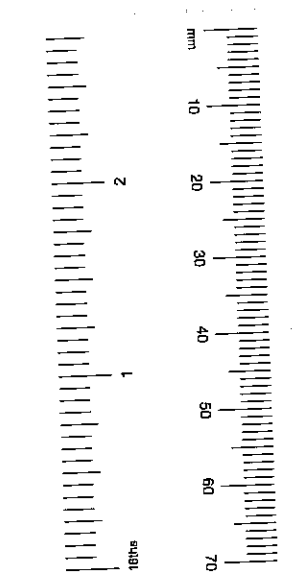
description
PROPOSED FRONT ELEVATION + LONGITUDINAL SECTION

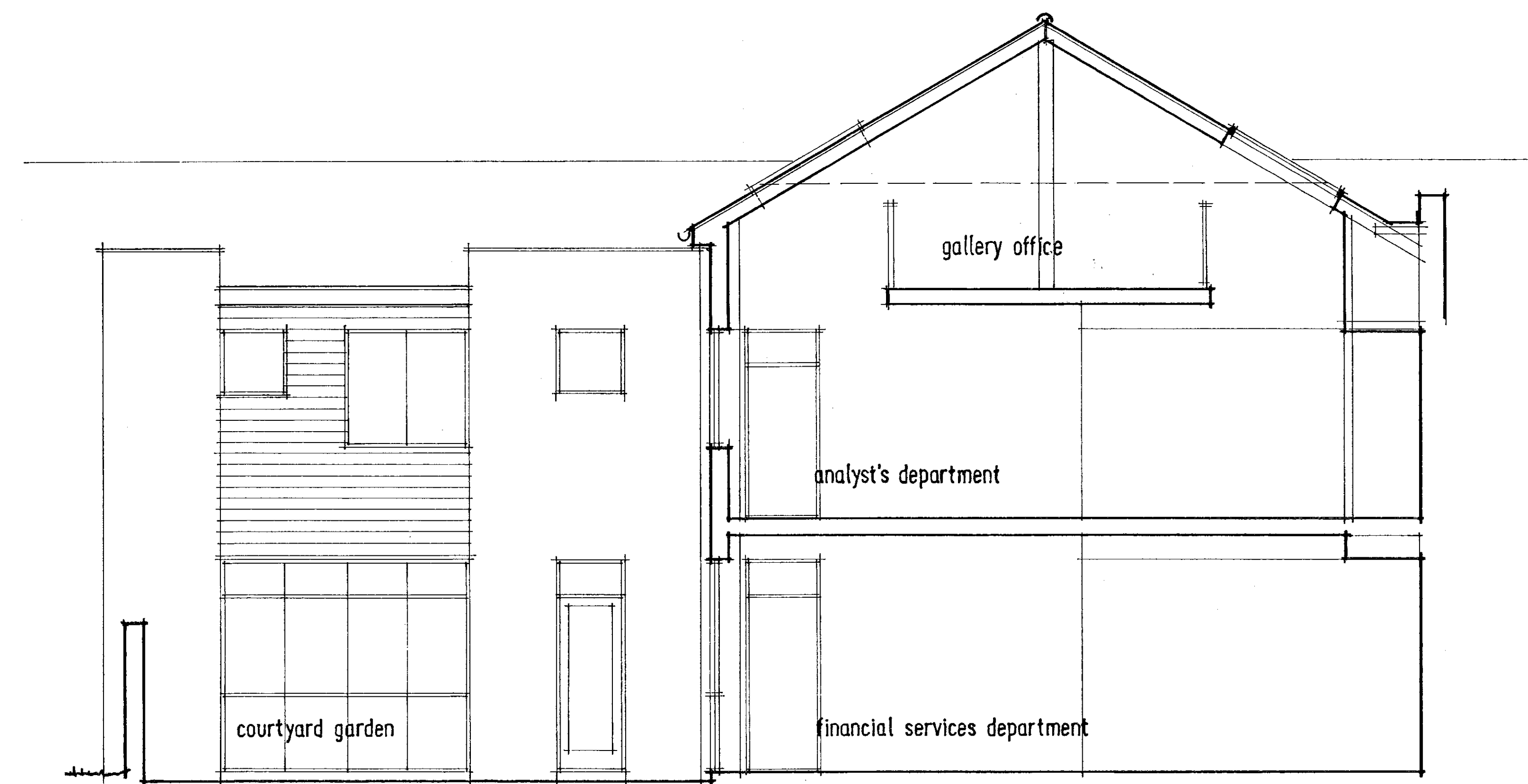
bm architects
3 cowper road
london
sw19 1aa

burgess mean architects

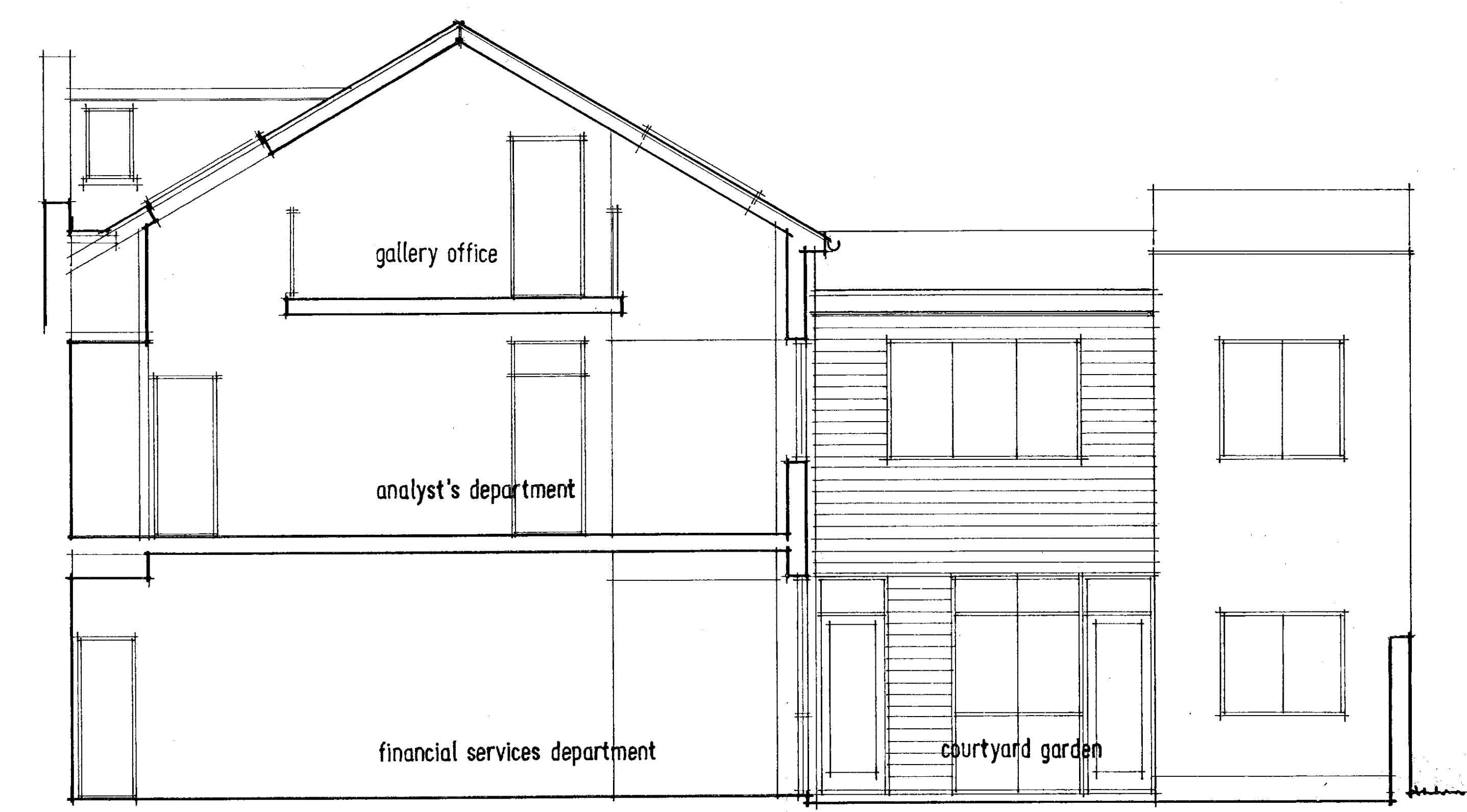
t: 0208 544 0777 e: burgess.mean@btinternet.com

date	21/9/00	scale	1:50	project	20305	drawing	014	revision	
drawn by	apb								
checked									





PROPOSED CROSS-SECTION A-A



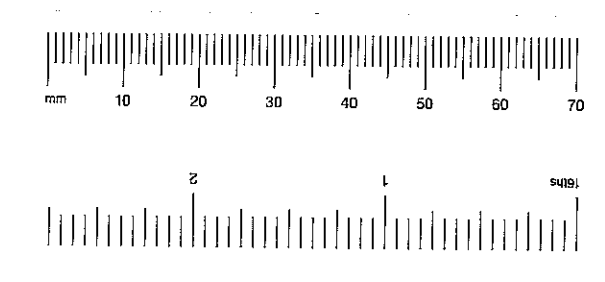
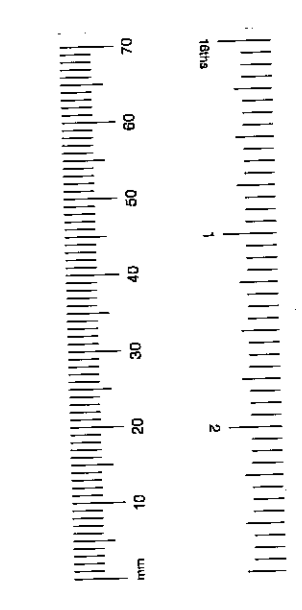
PROPOSED CROSS-SECTION B-B



COURTYARD PERSPECTIVE
(N.T.S.)

R.B.K. & C.
TOWN PLANNING
18 OCT 2000
RECEIVED

PP002818



title
27 KELSO PLACE · KENSINGTON · LONDON W8

client
MOUNTCASHEL PLC

description
PROPOSED CROSS-SECTIONS + COURTYARD PERSPECTIVE

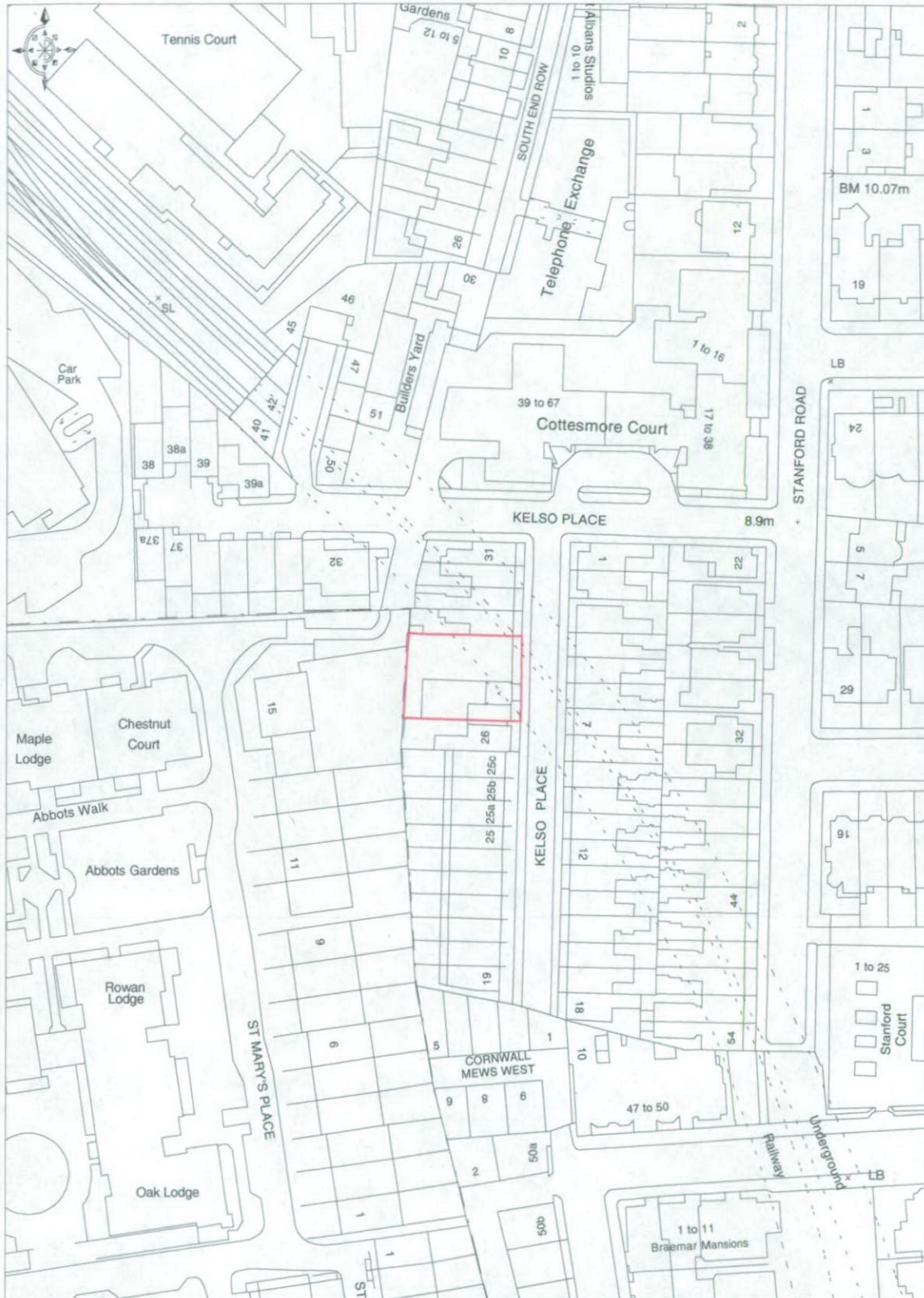
burgess mean architects
3 cowper road
london
SW19 1QA

t: 0208 544 0777 e: burgess.mean@btinternet.com

date: 21/9/00 scale: project drawing revision
drawn by: checked: 1:50 | 20305 | 015

27 KELSO PLACE, LONDON W8

PP002318



© Crown copyright 2000 All rights reserved. Based on Ordnance Survey digital data Survey Scale - 1:1250 Plotted Scale - 1:1250 (Scales other than at Survey Scale should not be used for accurate measurement). Business occupancy data ©2000 Thomson Directories Ltd.



SITE LOCATION PLAN

R.B.K. & C.
TOWN PLANNING
18 OCT 2000
RECEIVED