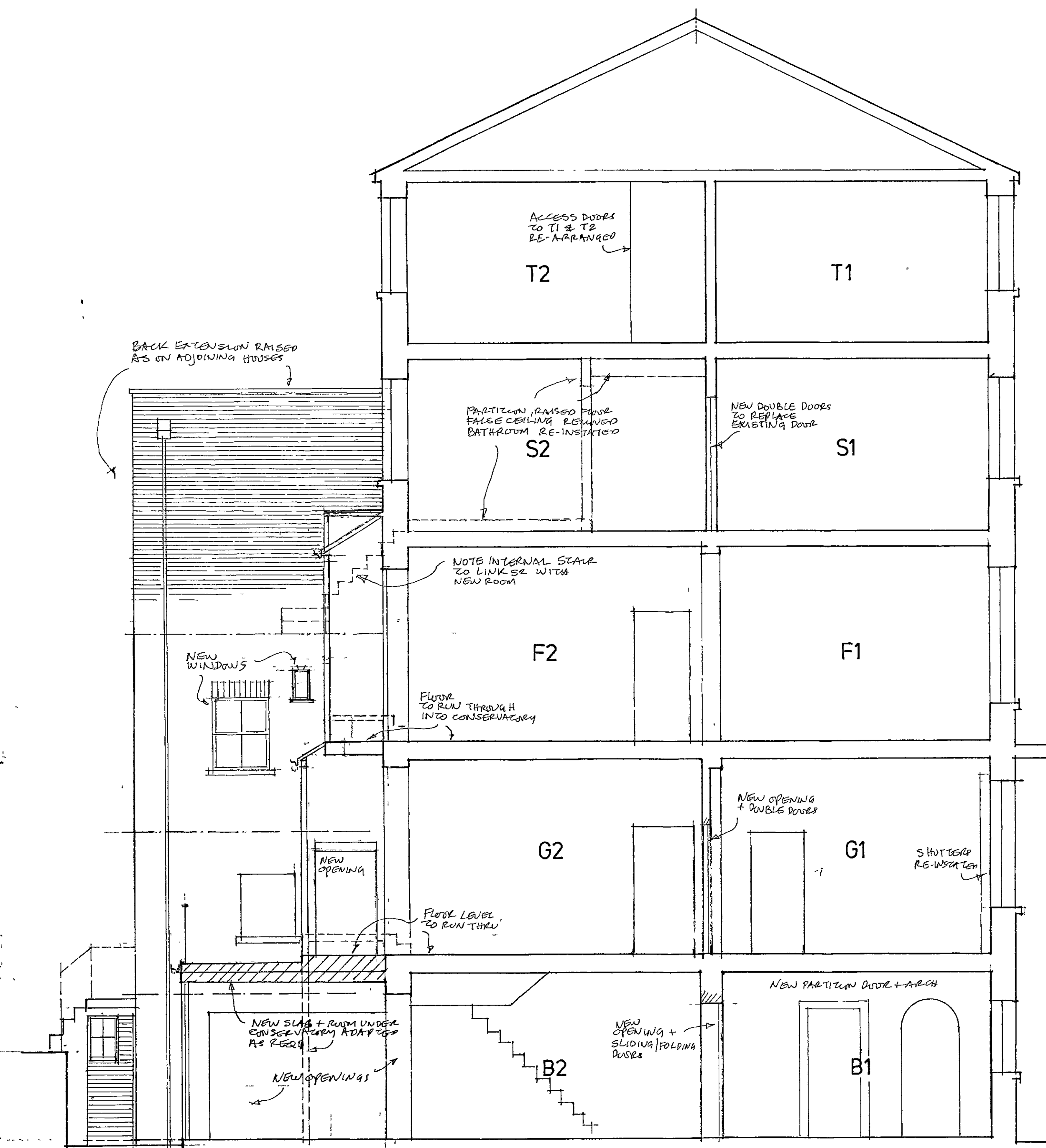
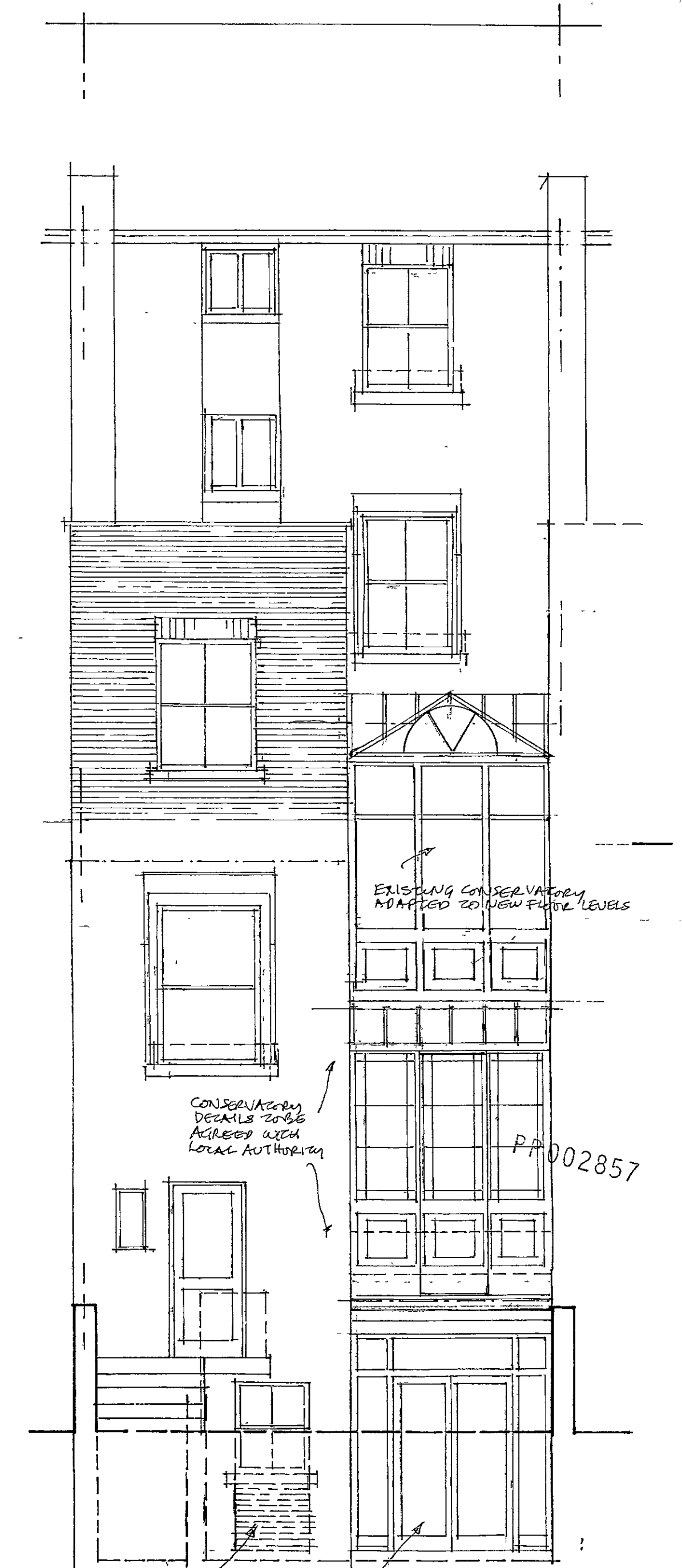


SECTION A - A

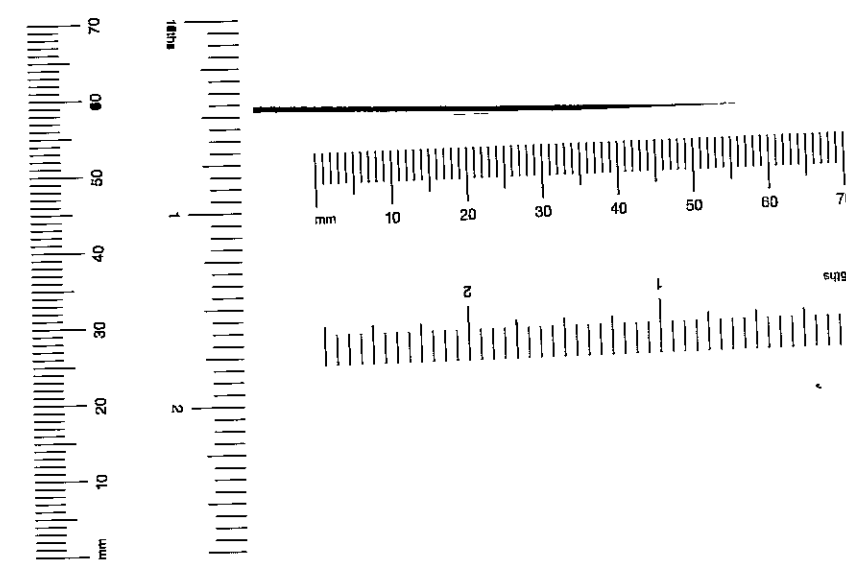


SECTION B - B

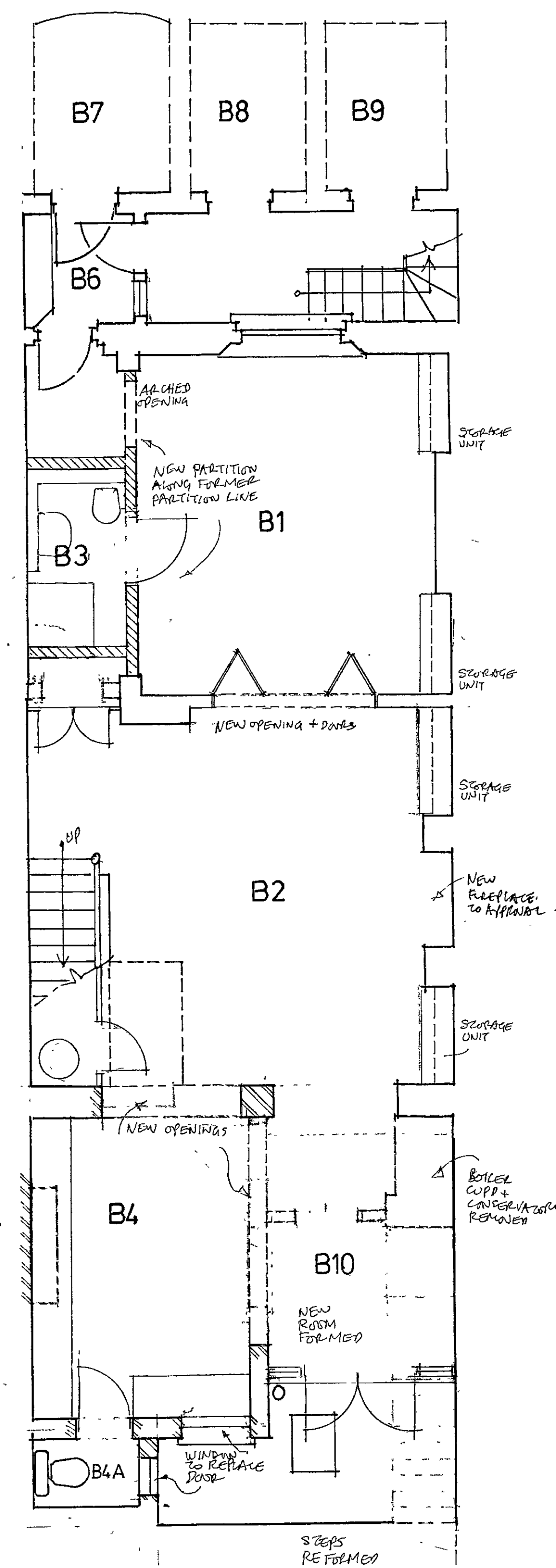


WEST ELEVATION

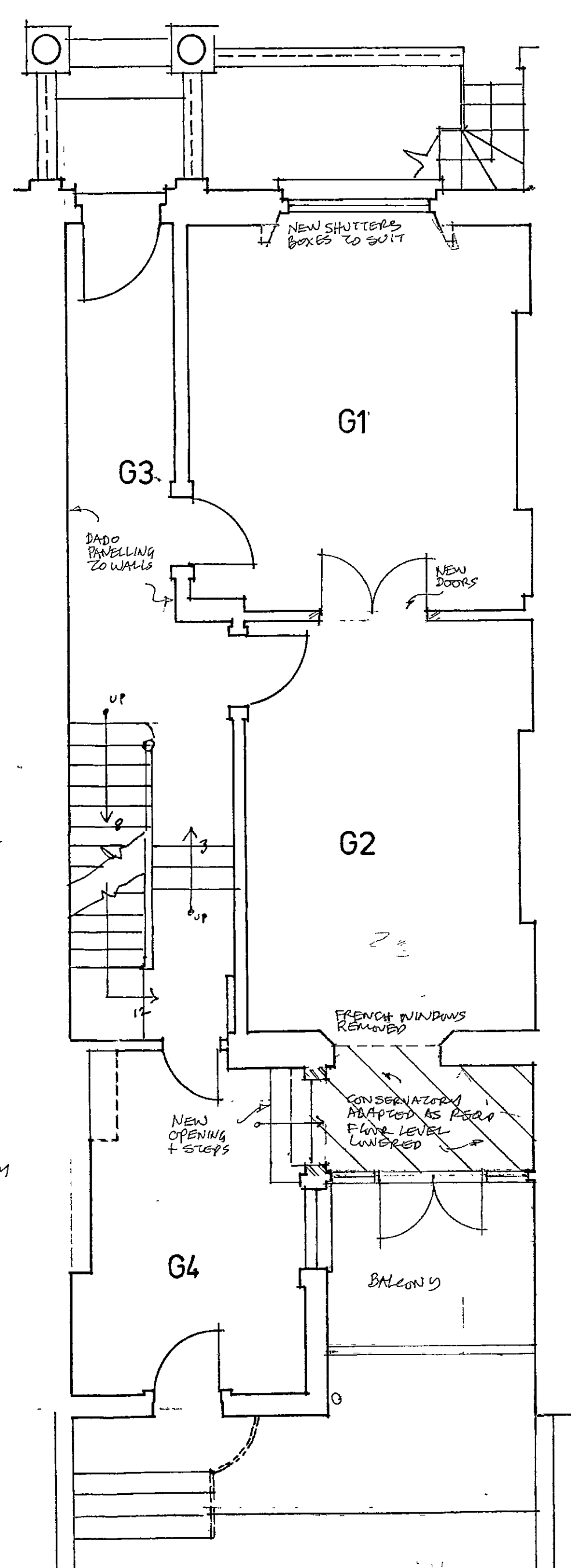
PA/02857  
 R.B.K. & C.  
 TOWN PLANNING  
 13 DEC 2000  
 RECEIVED



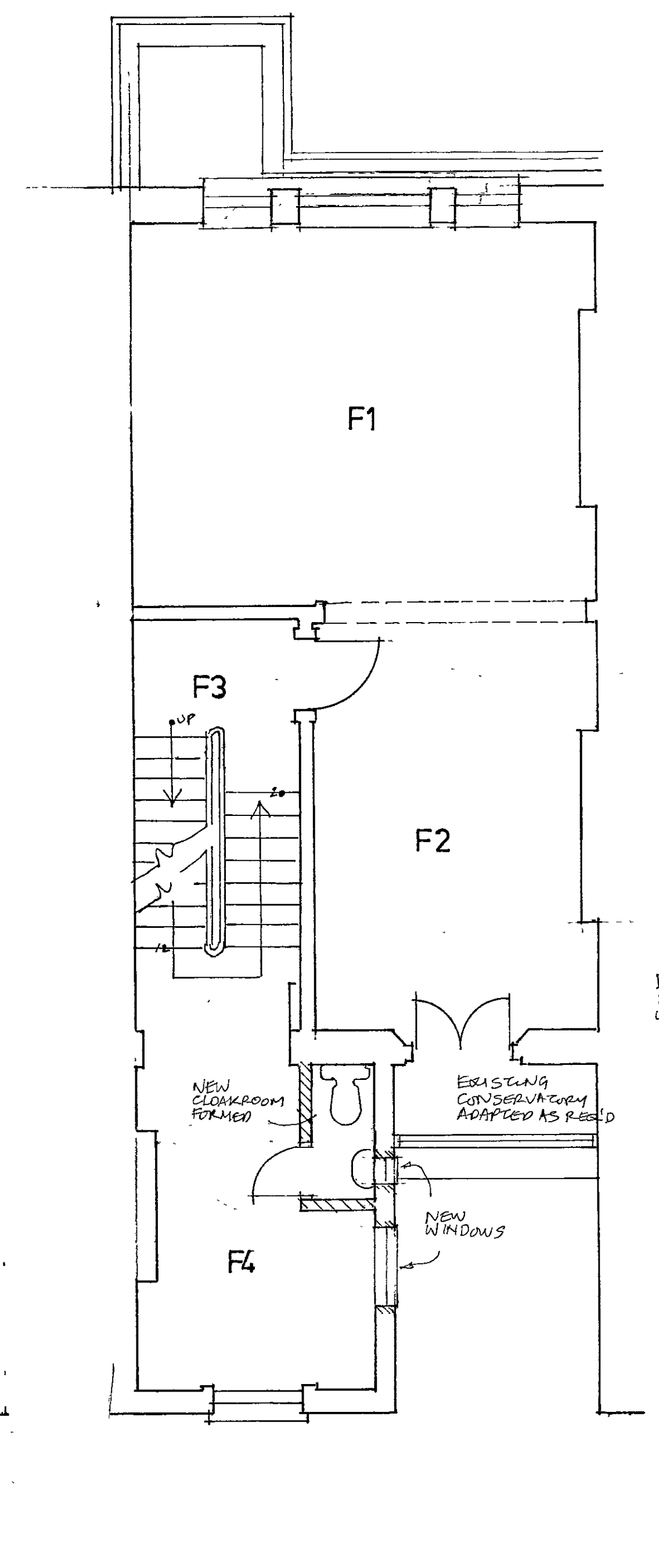
Job		15 NEVILLE STREET, SW.7	
Drawing		SECTIONS & ELEVATION	
Drawing No		2146TJ/P/2	
SPENCE PARTNERSHIP	Essex Lodge Barnes London SW13 0LW	020 8878 1201 020 8878 6172	Scale 1:50
architects	Date	10.10.00	Drawn by CR



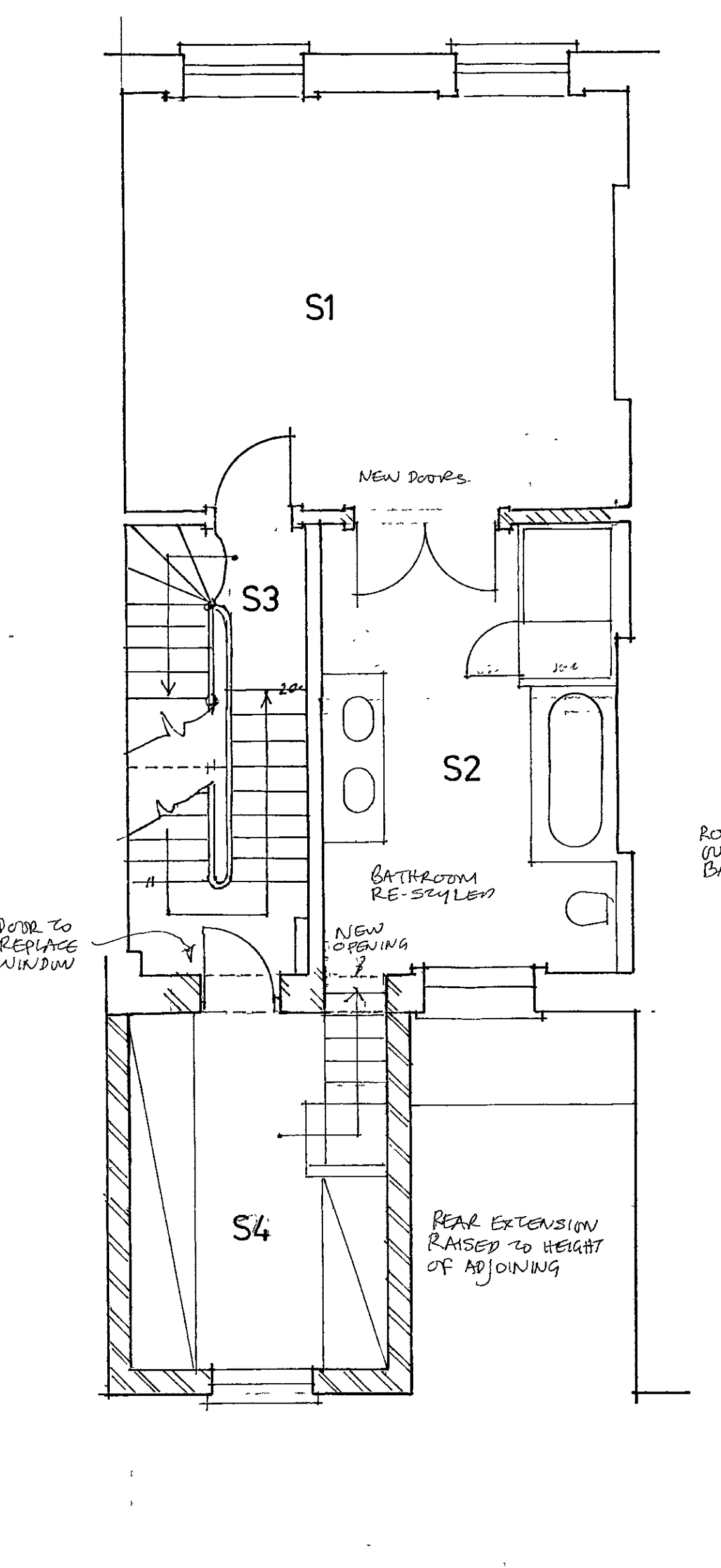
BASEMENT



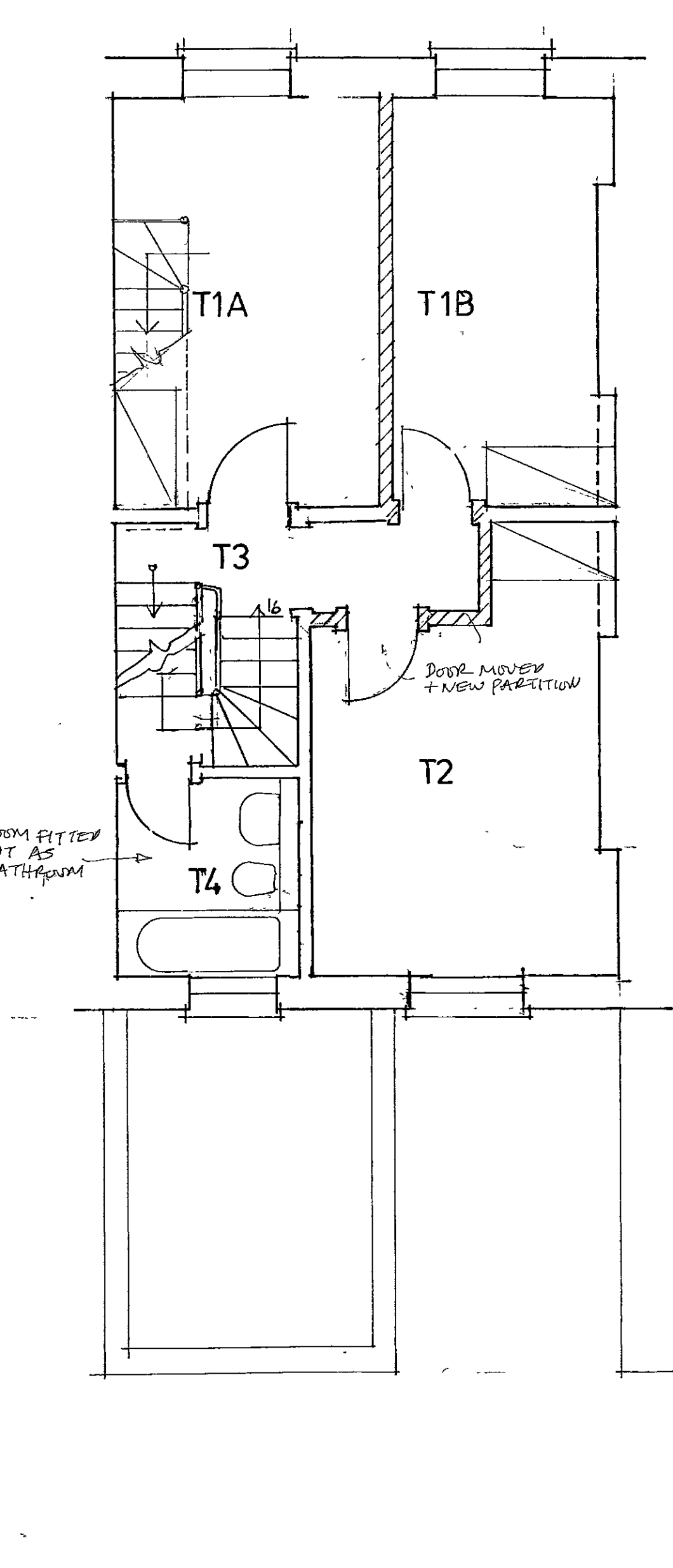
GROUND FLOOR & GARDEN



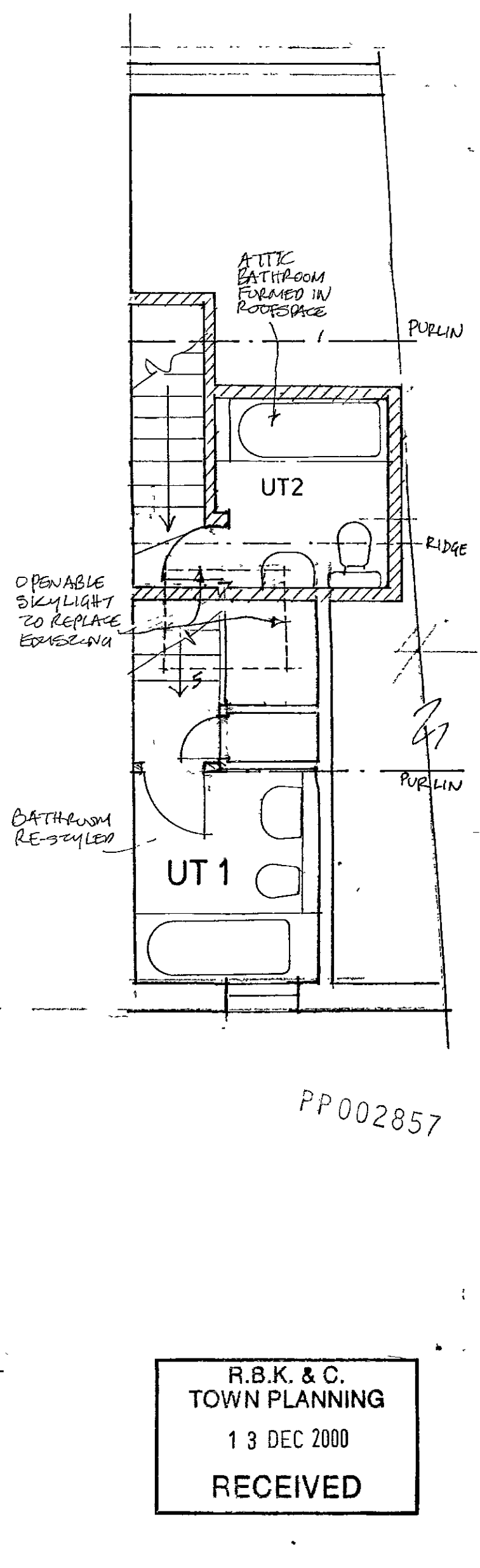
FIRST FLOOR



SECOND FLOOR



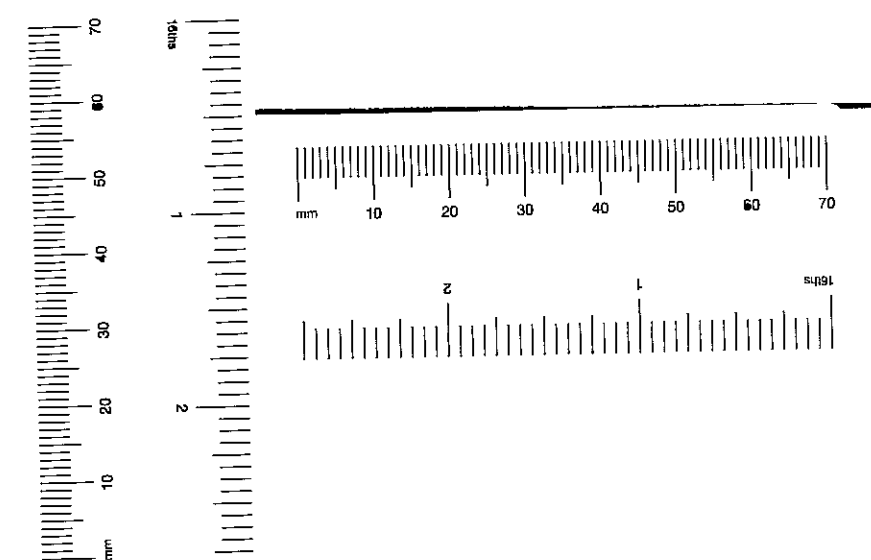
THIRD FLOOR



UPPER THIRD FLOOR

PP002857

R.B.K. & C.  
TOWN PLANNING  
13 DEC 2000  
RECEIVED

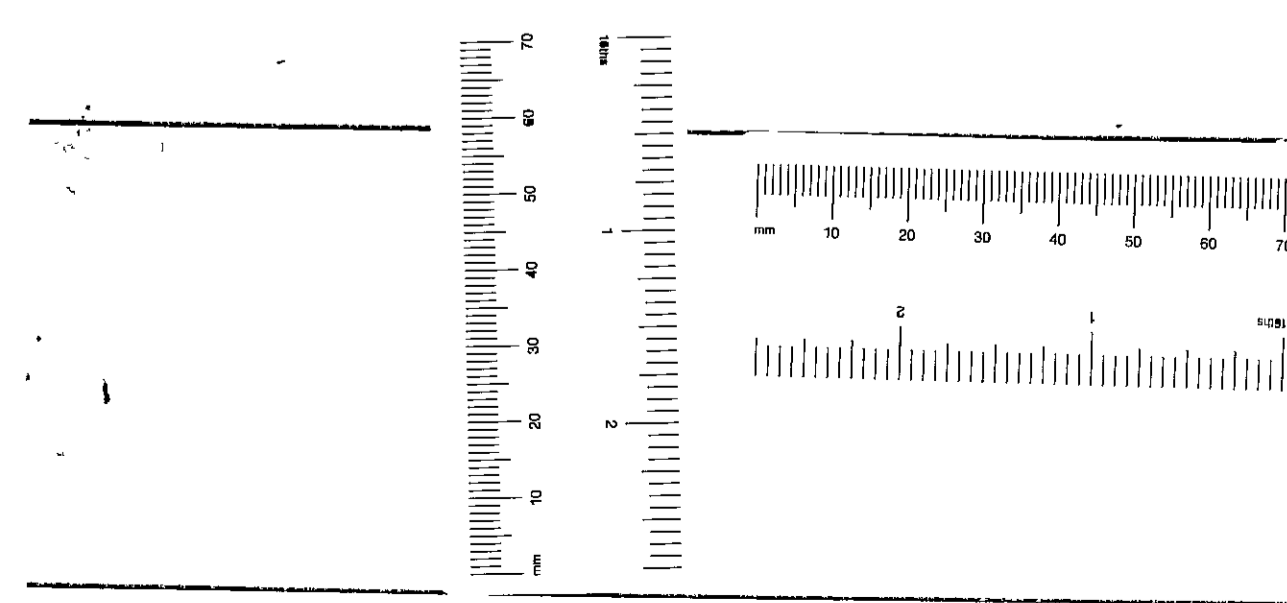
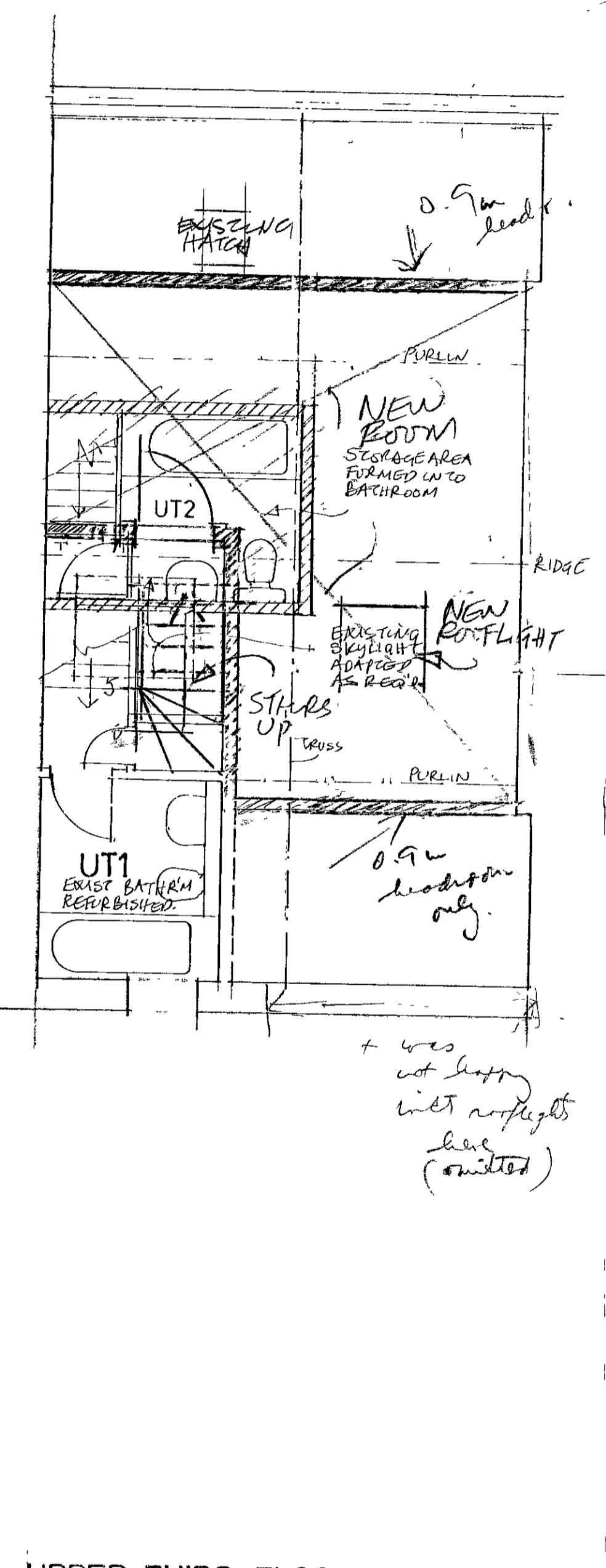
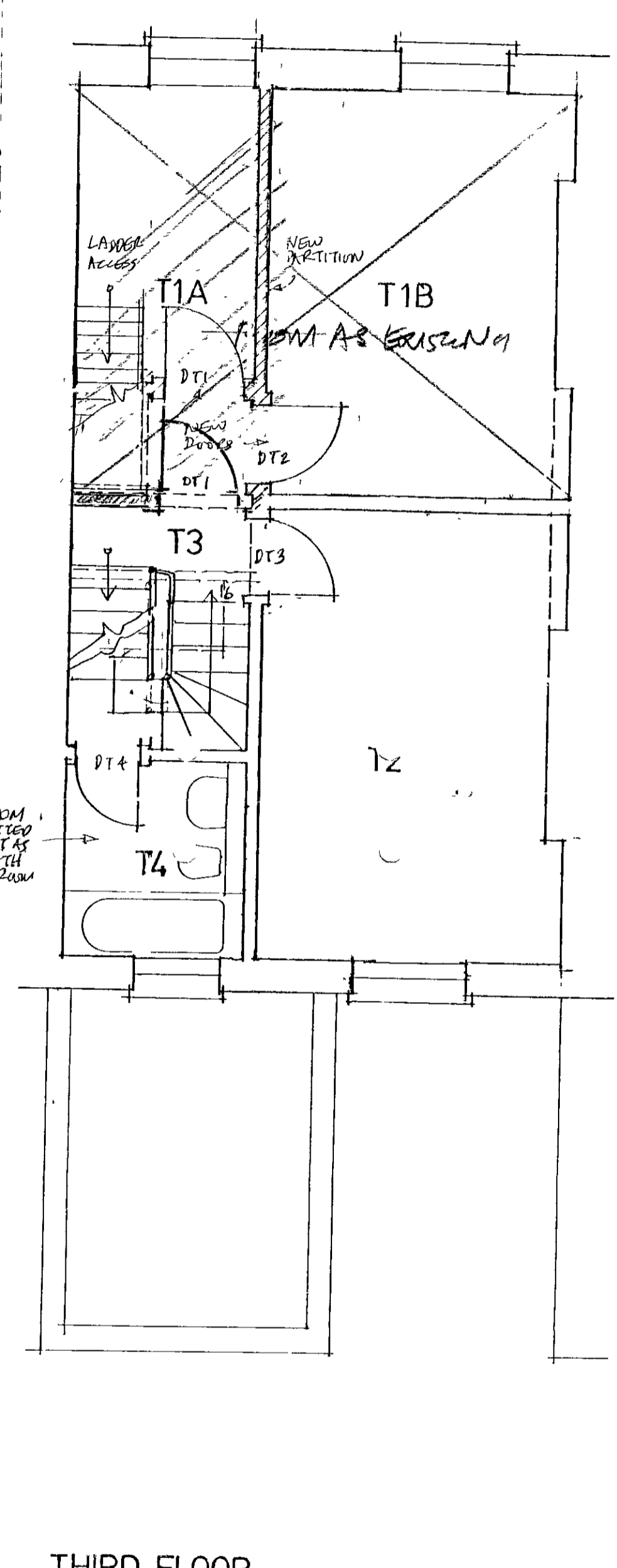
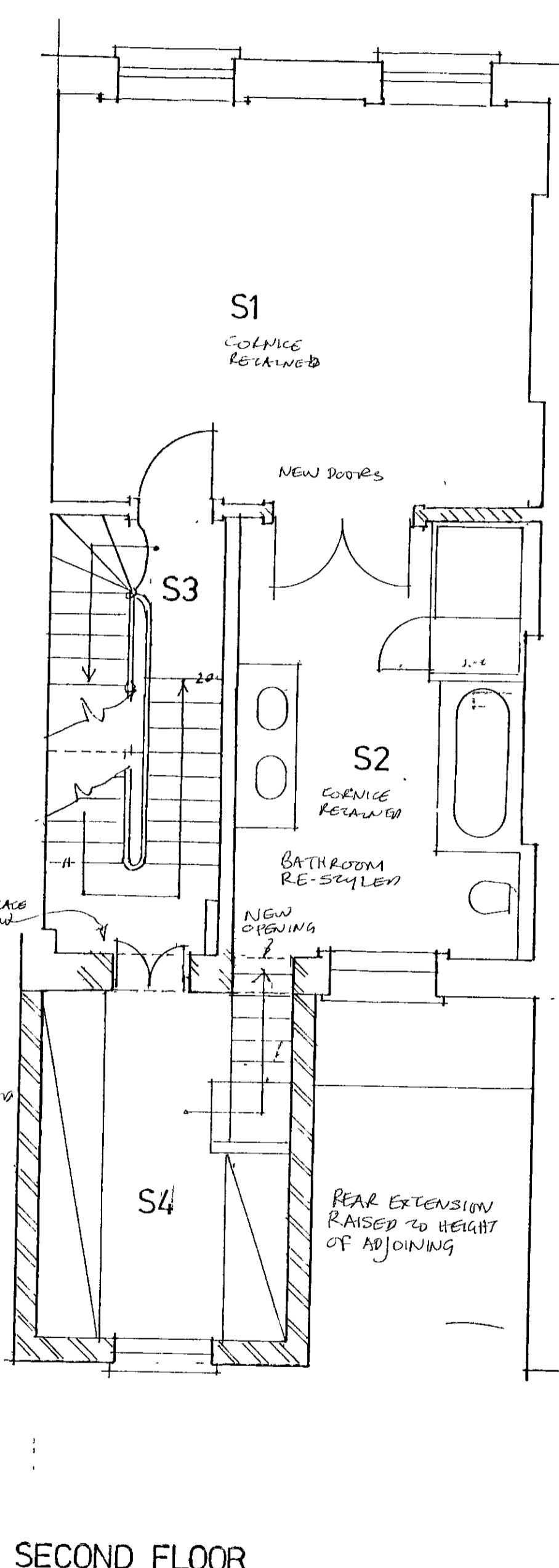
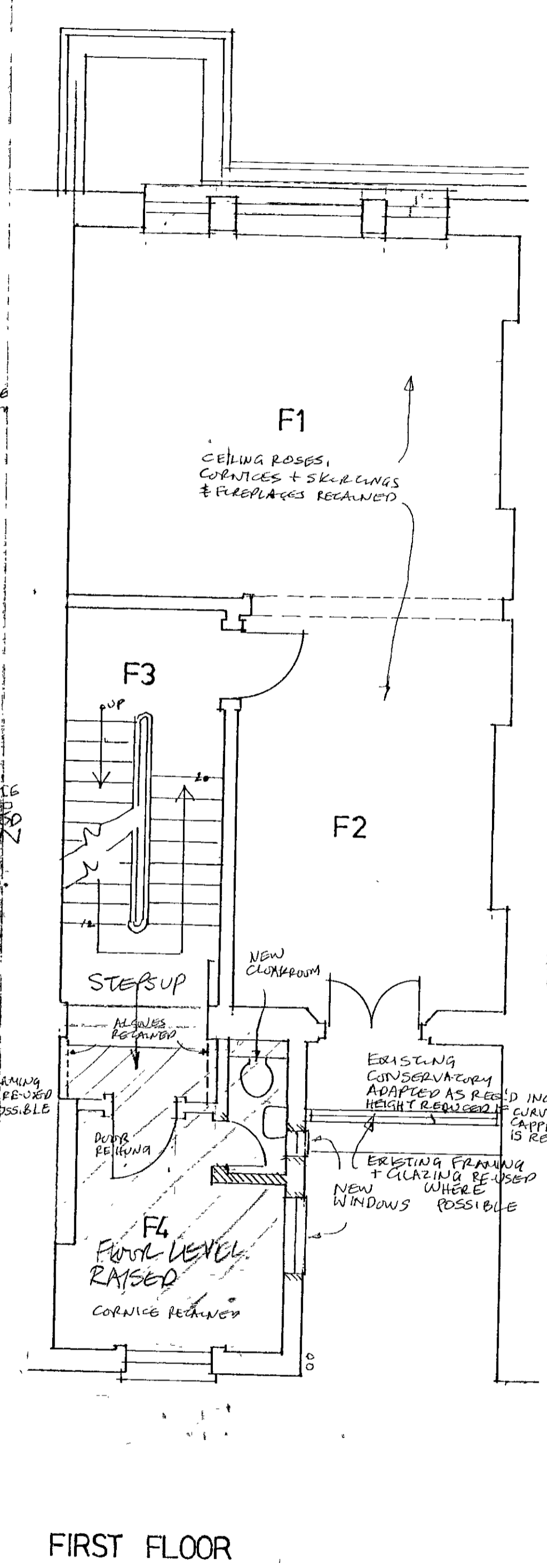
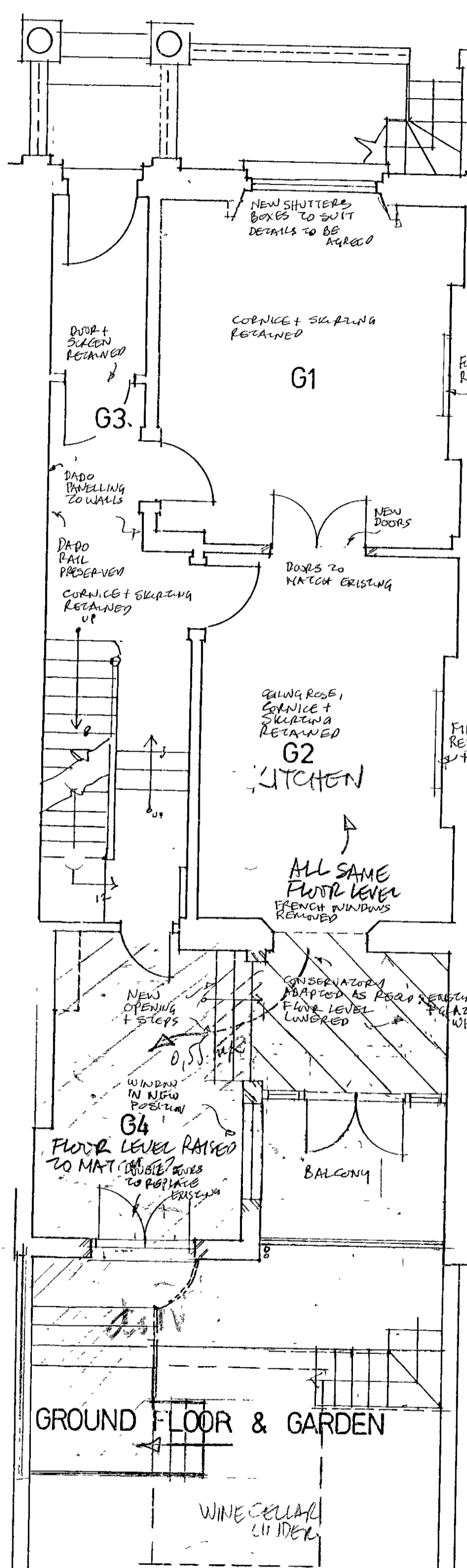
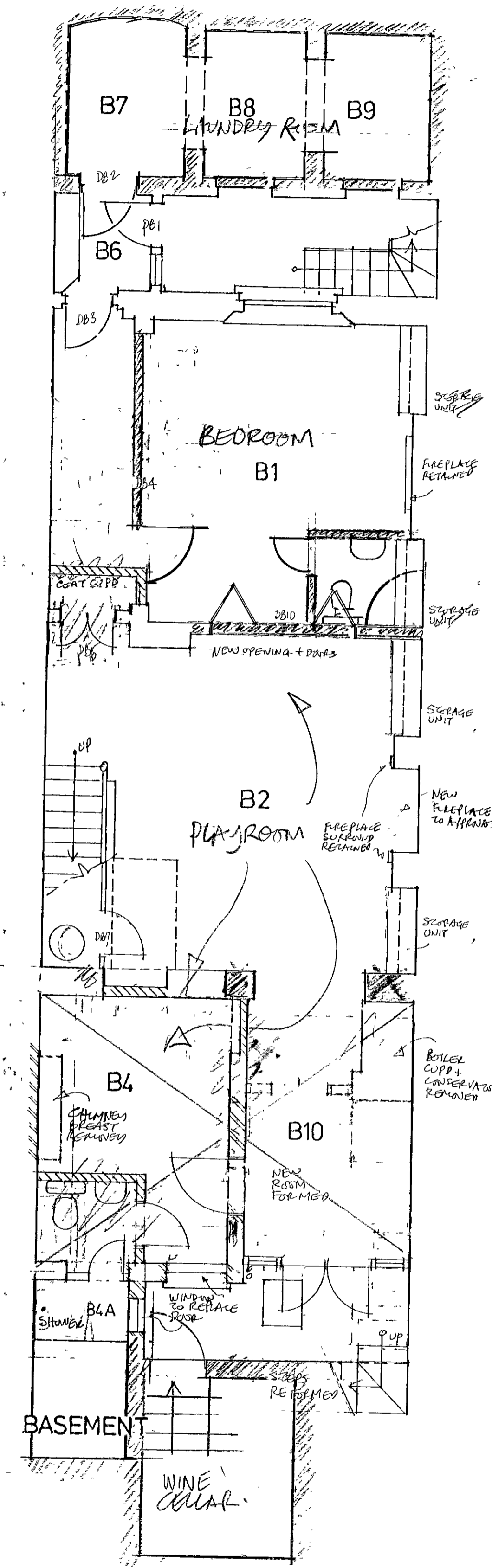


A B

15 NEVILLE STREET, S.W.7.

Drawing No. **2146TJ/P/1**

SPENCE PARTNERSHIP Essex Lodge Bames London SW13 0LW  
 020 8576 1201  
 Scale 1:50  
 Date 1/10/00  
 Drawn by CR



AMENDMENT ① PFA AMENDED - GEN NOTES TO IFFS BLOCK 05-02-01  
 ② GEN. AMENDMENTS 15.02.01 PERS  
 ③ AMENDMENTS TO UT 2 + CONSERVATORY 27.02.01 + MINOR AMENDMENTS  
**PROPOSED REVISED ARRANGEMENTS SHOWN IN RED**

15 NEVILLE STREET, S.W.7

Drawing No: 2146TJ/P/1C

FLOOR PLANS

SPENCE PARTNERSHIP architects

PO Box 577, RICHMOND, SURREY TW9 1NJ  
 020 8948 4576

Date: 27/5/02

Scale: 1:50

Drawn by: CR

EX DIR	HDC	TP	CAC	AD	CLU	AO	AR
R.B.	K.C.	28 MAY 2002	PLANNING				
N	C	SW	SE	APP	IO	REC	
				ARB	P/PLN	DES	FEES

was not built with skylight (see omitted)