

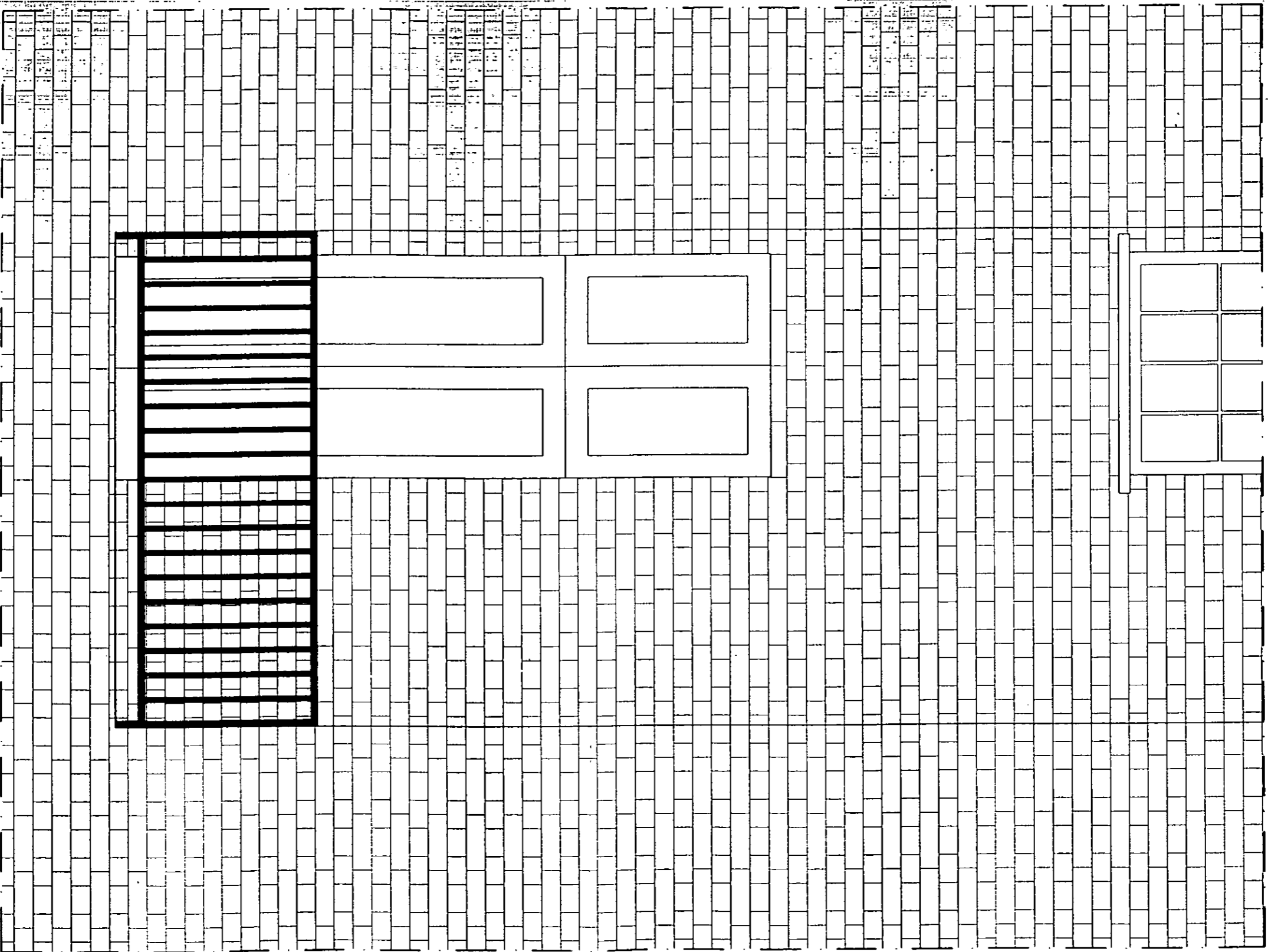
*Proposed floor plan*

SCALA 1:50

New extension

R.B.K. & C.  
TOWN PLANNING  
15 DEC 2000  
RECEIVED

PP 002873

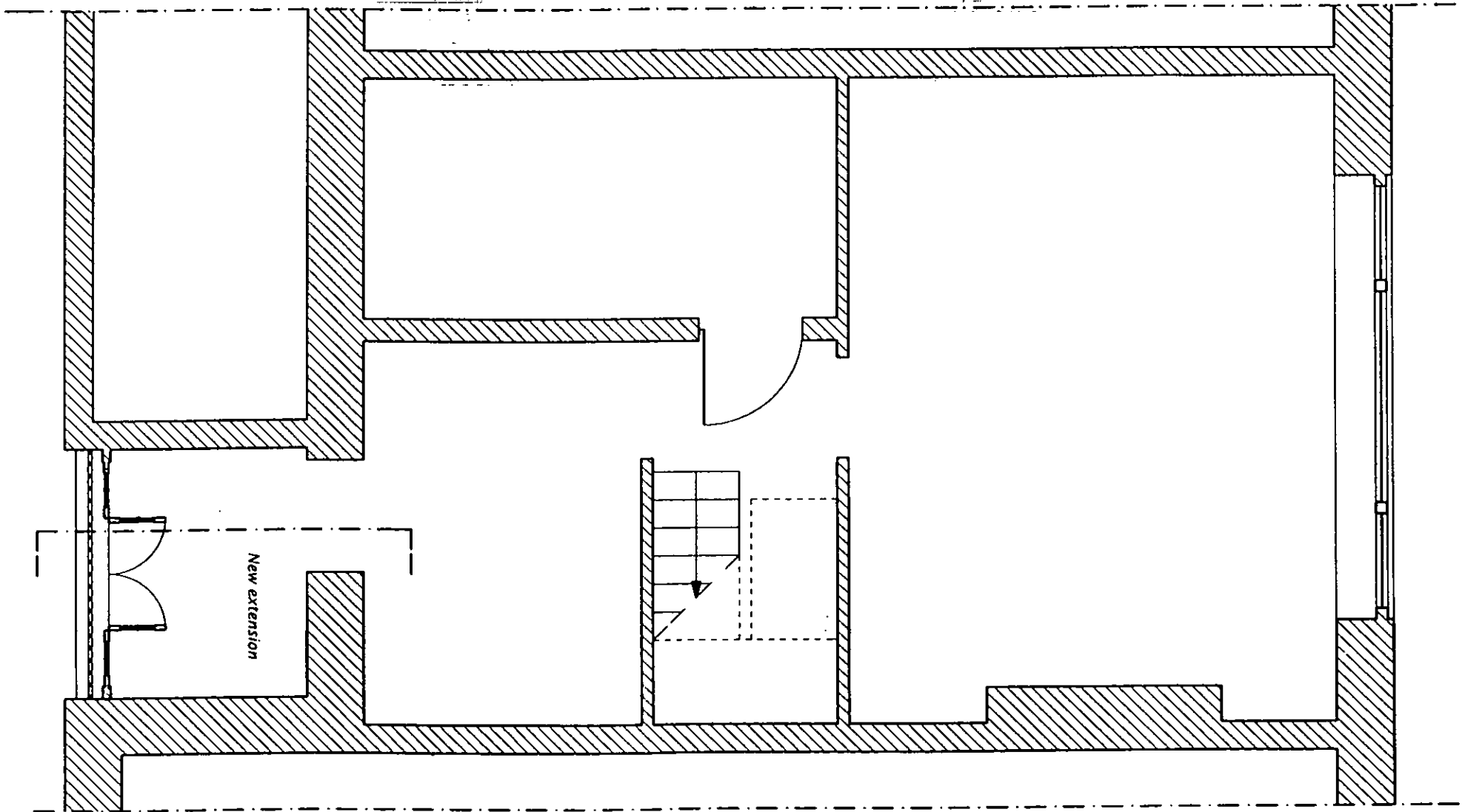


SCALE 1:20

*Existing elevation*

R.B.K. & C.  
TOWN PLANNING  
1 5 DEC 2000  
RECEIVED

PP002873

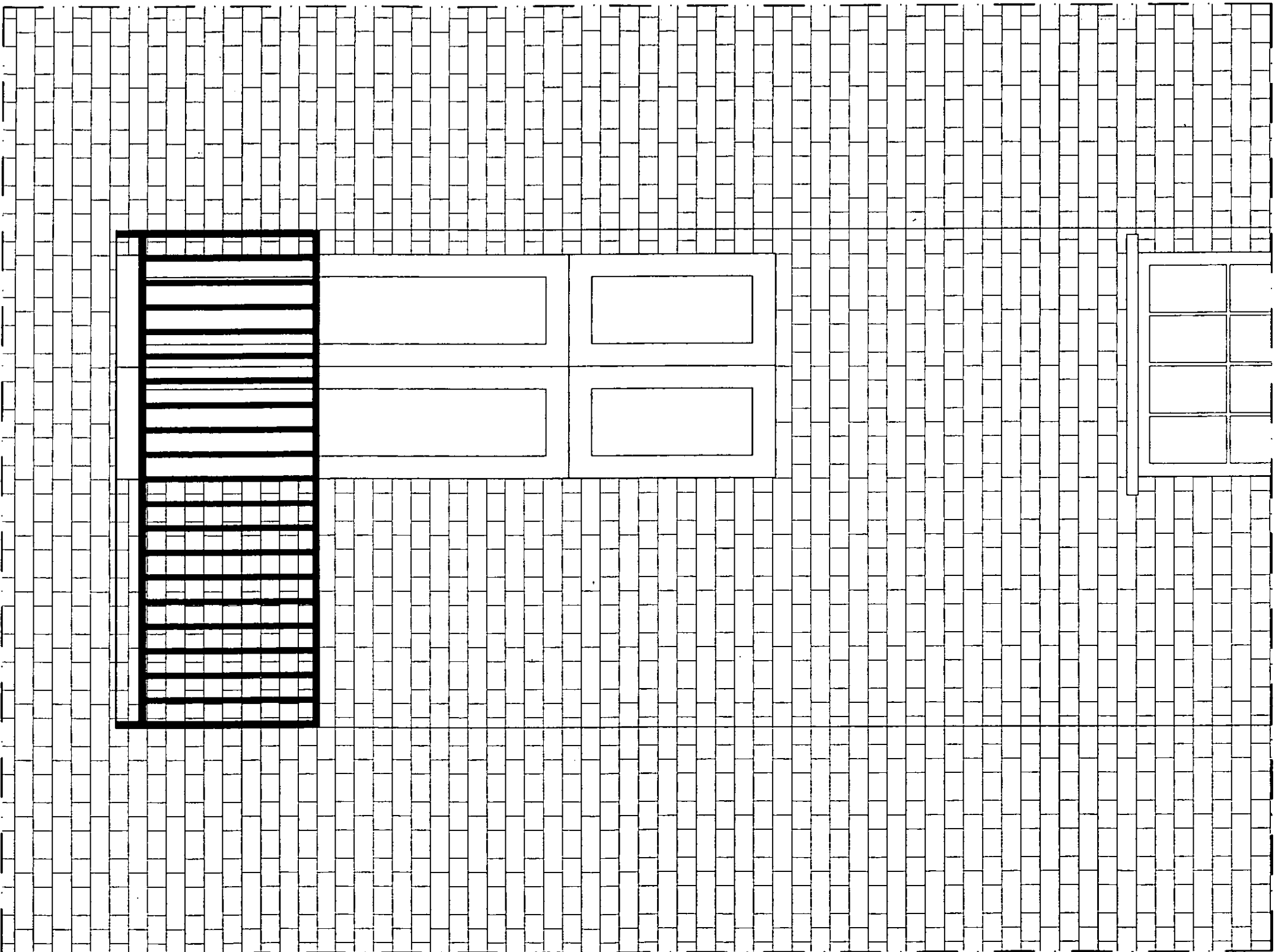


SCALA 1:50

*Proposed floor plan*

PP002873

R.B.K. & C.  
TOWN PLANNING  
1 5 DEC 2000  
RECEIVED

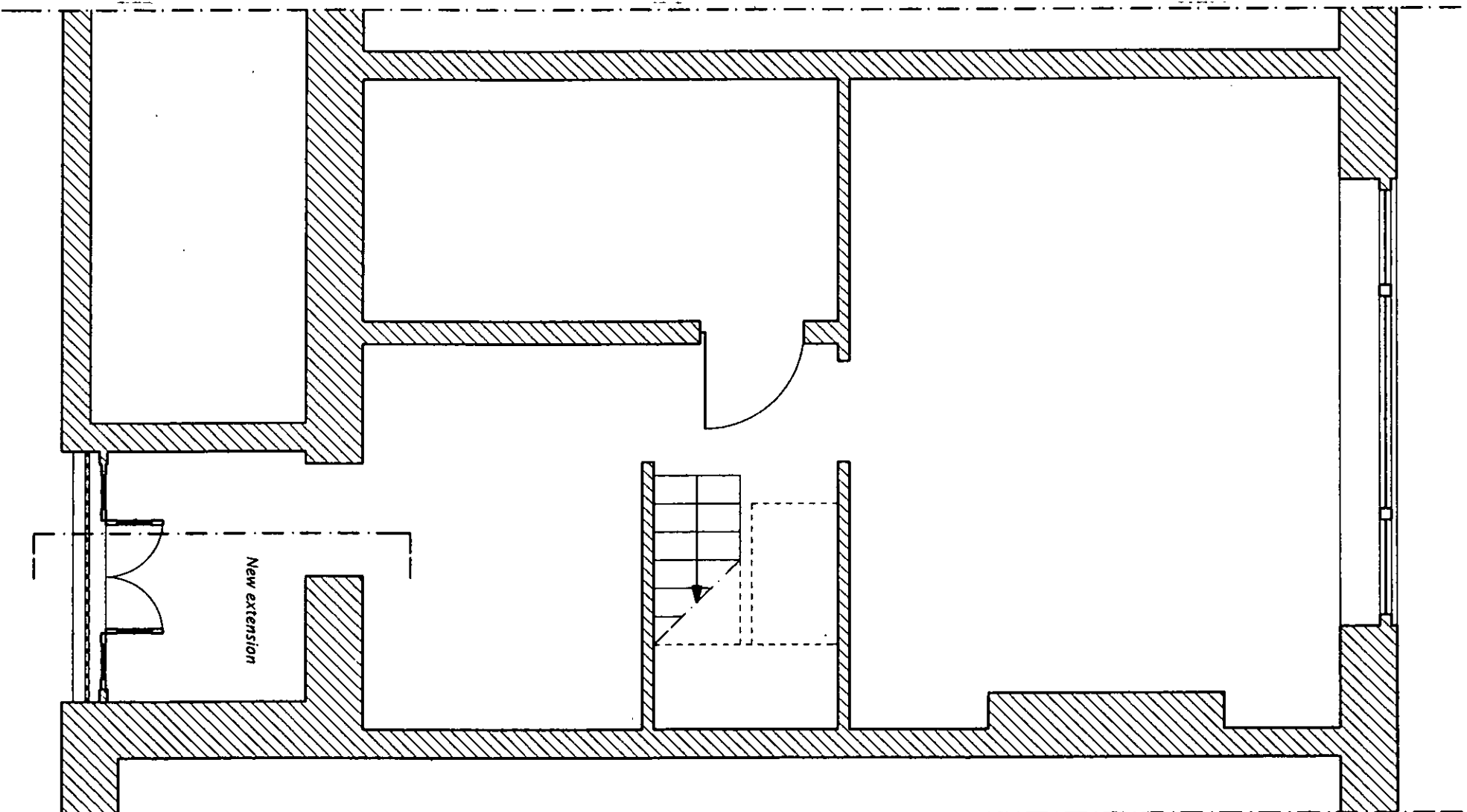


SCALE 1:20

PP002873

Existing elevation

R.B.K. & C.  
TOWN PLANNING  
15 DEC 2000  
RECEIVED



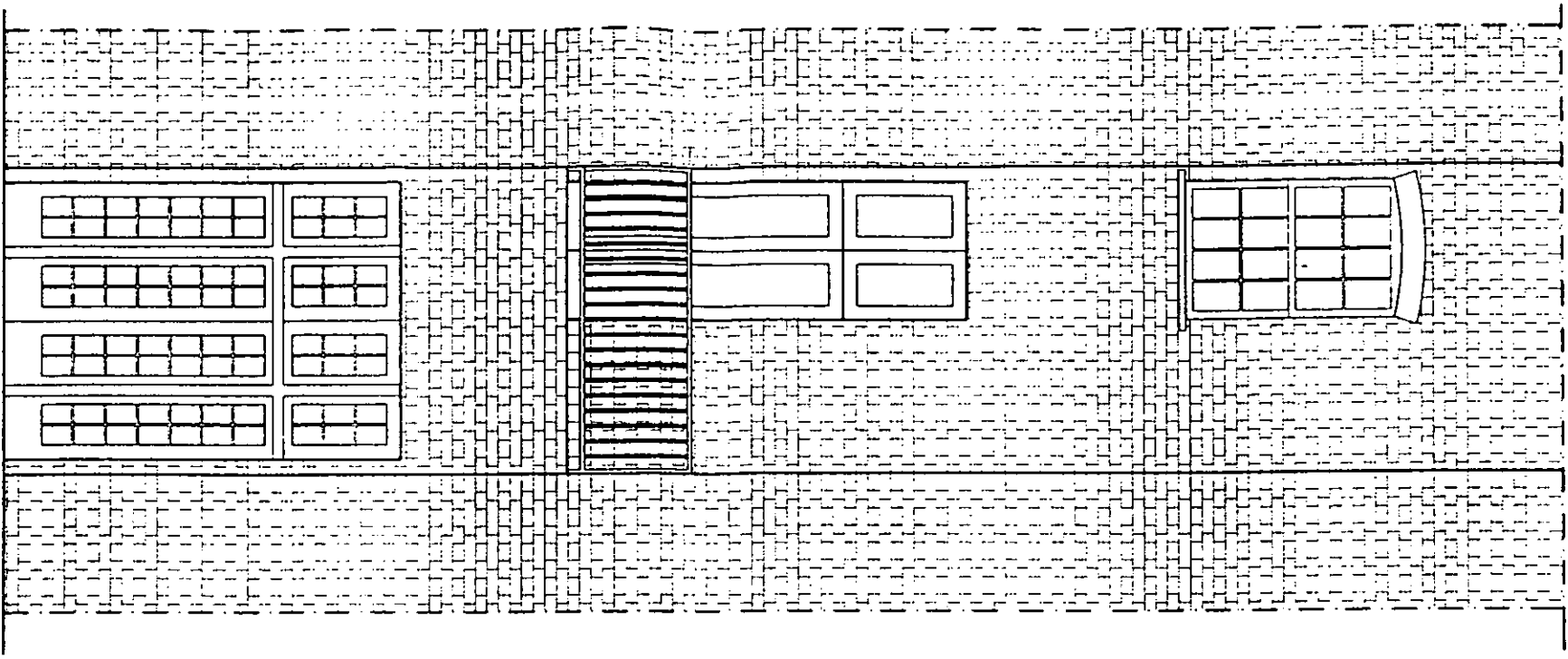
*Proposed floor plan*

SCALA 1:50

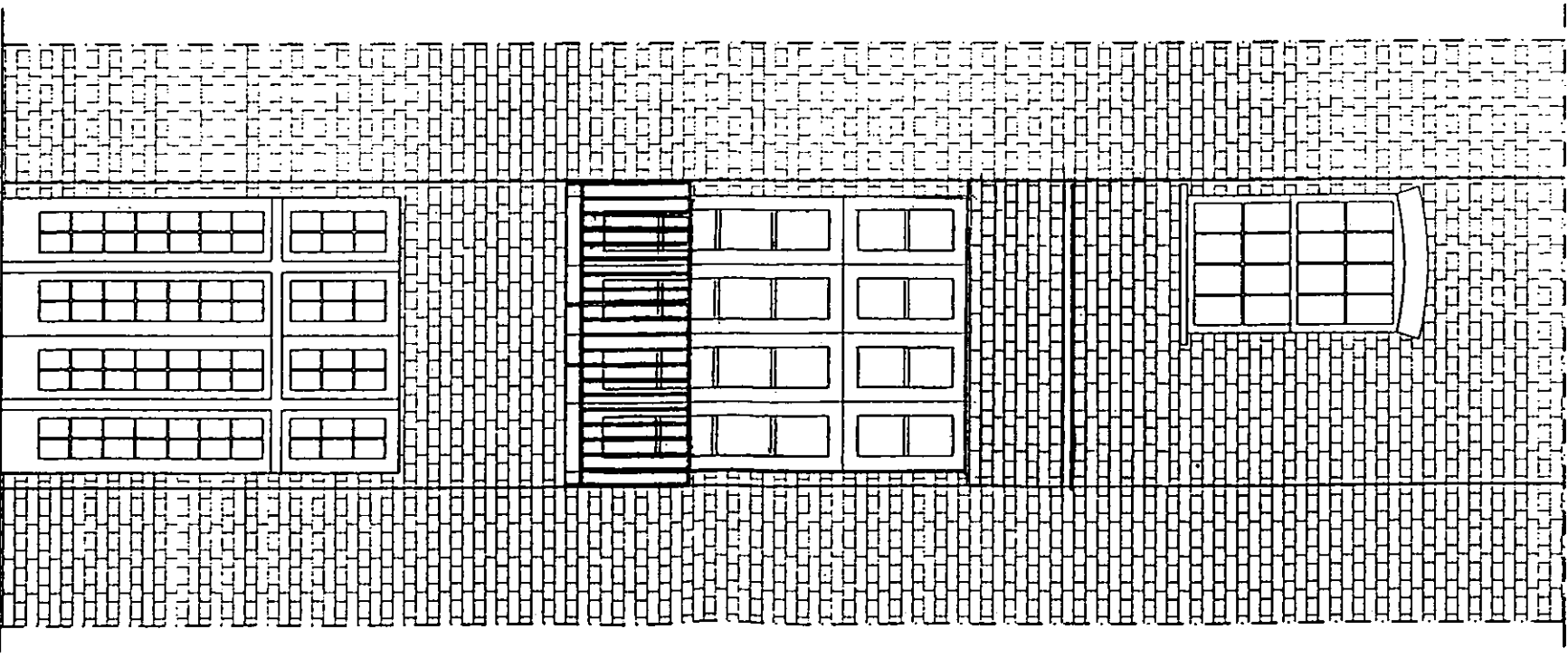
R.B.K. & C.  
TOWN PLANNING  
15 DEC 2000  
RECEIVED

PP002873

R.B.K. & C.  
TOWN PLANNING  
29 JAN 2001  
RECEIVED



Existing elevation

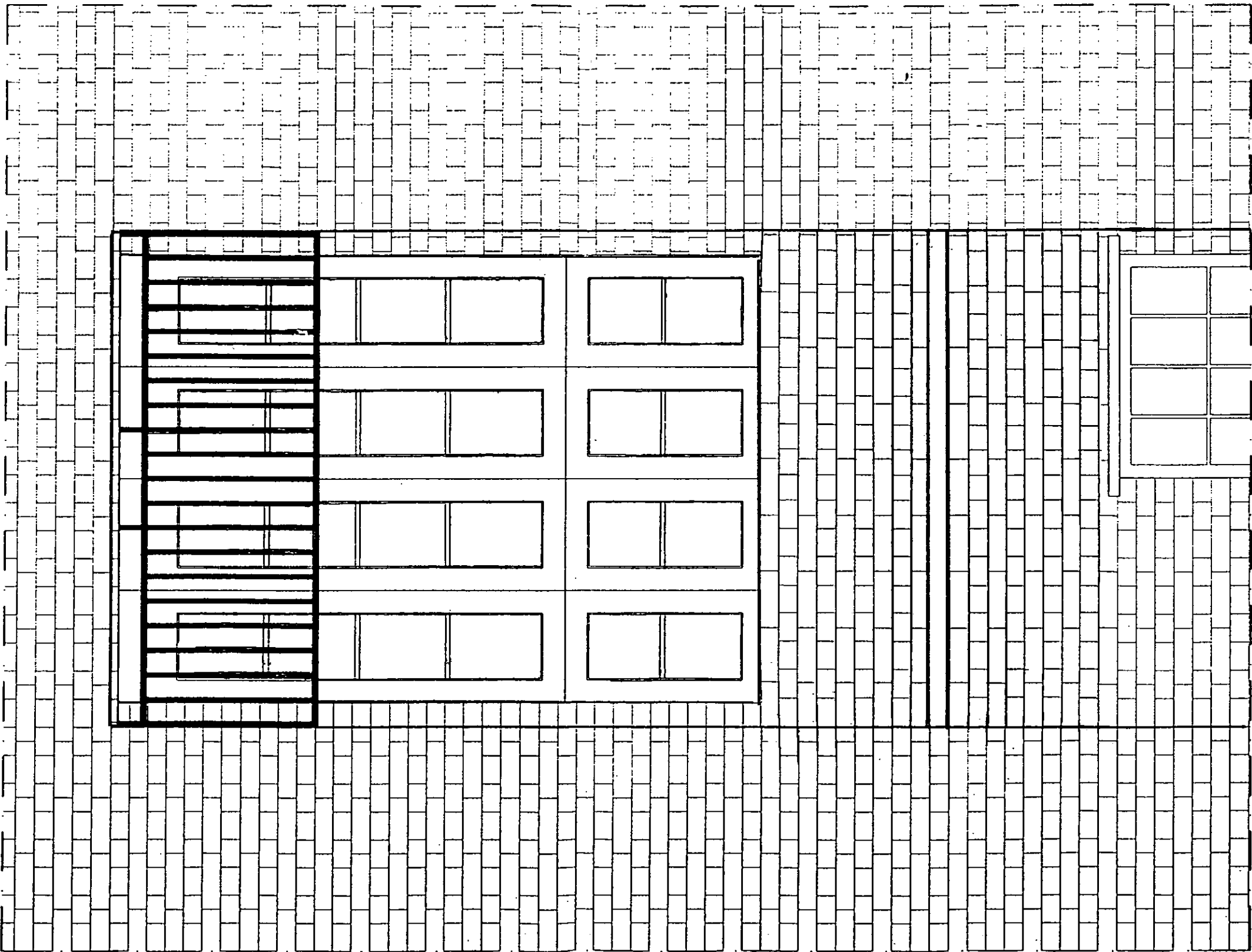


Proposed elevation

SCALA 1:50

ref 1001 28734

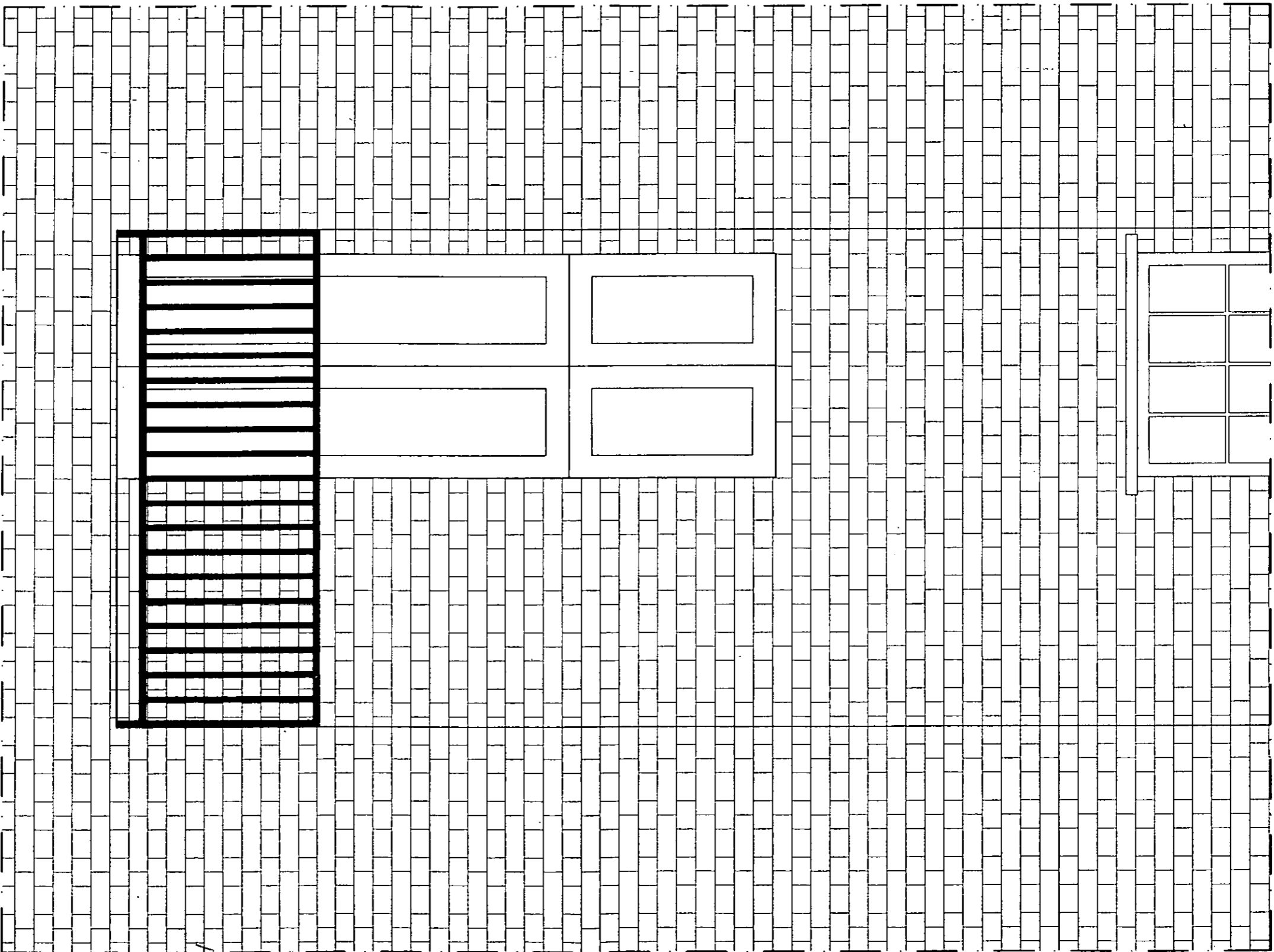
R.B.K. & C.  
TOWN PLANNING  
29 JAN 2001  
RECEIVED



*Proposed elevation*

SCALE 1:20

Ref 00/2873A



PP002873

Existing elevation

R.B.K. & C.

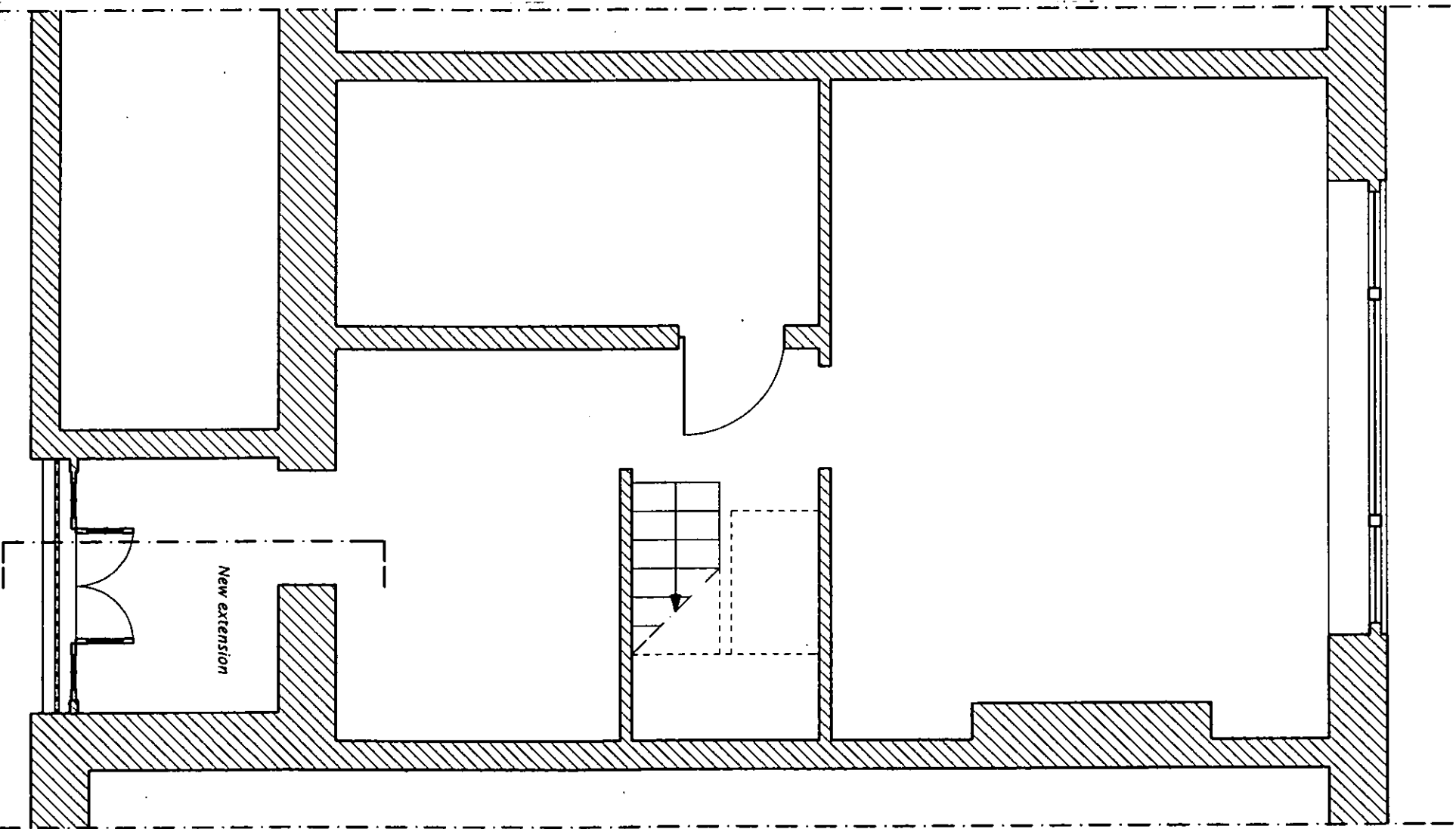
TOWN PLANNING

1 5 DEC 2000

RECEIVED

SCALE 1:20





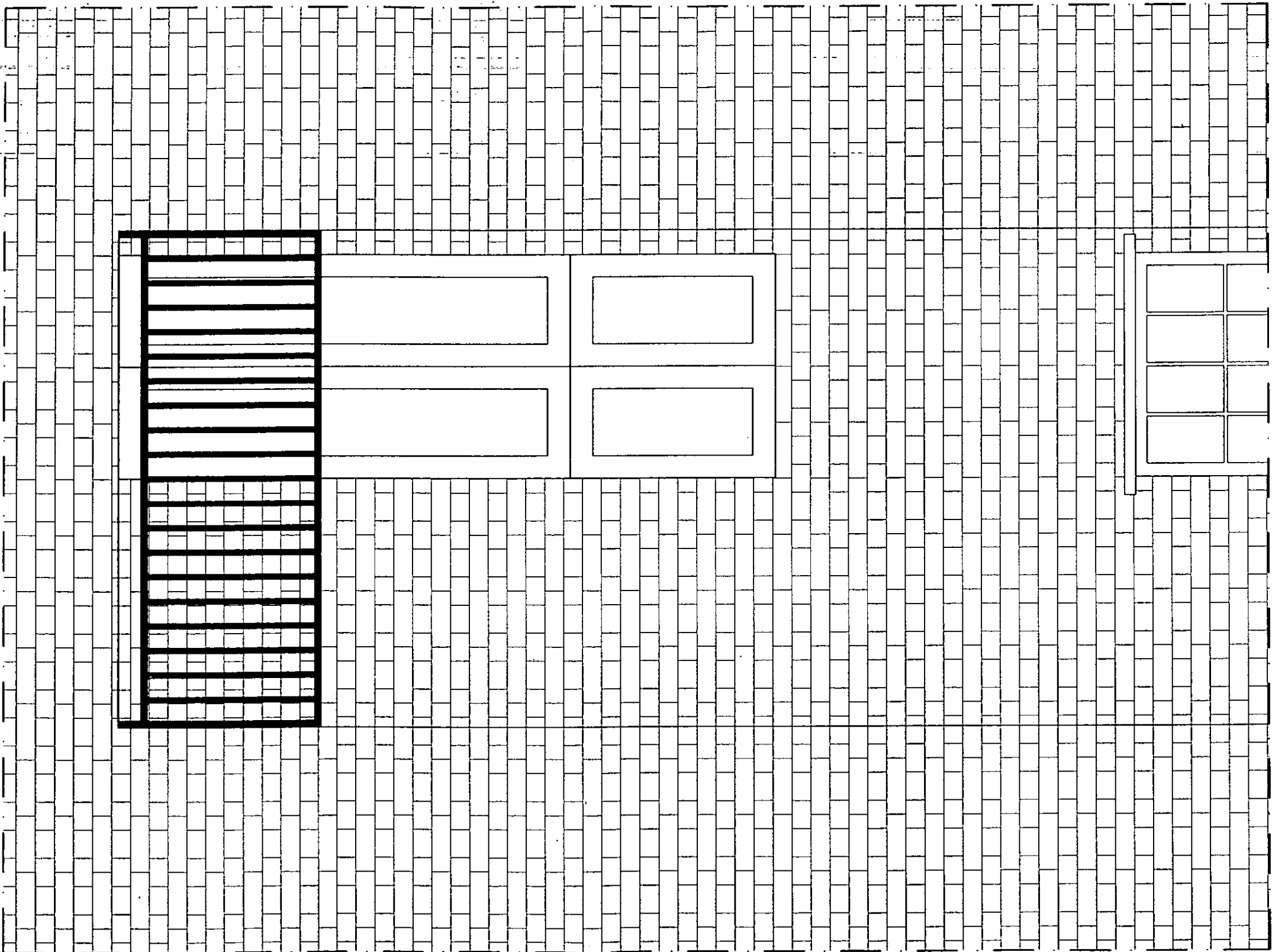
*Proposed floor plan*

SCALA 1:50

New extension

R.B.K. & C.  
TOWN PLANNING  
15 DEC 2000  
RECEIVED

PP002873



SCALE 1:20

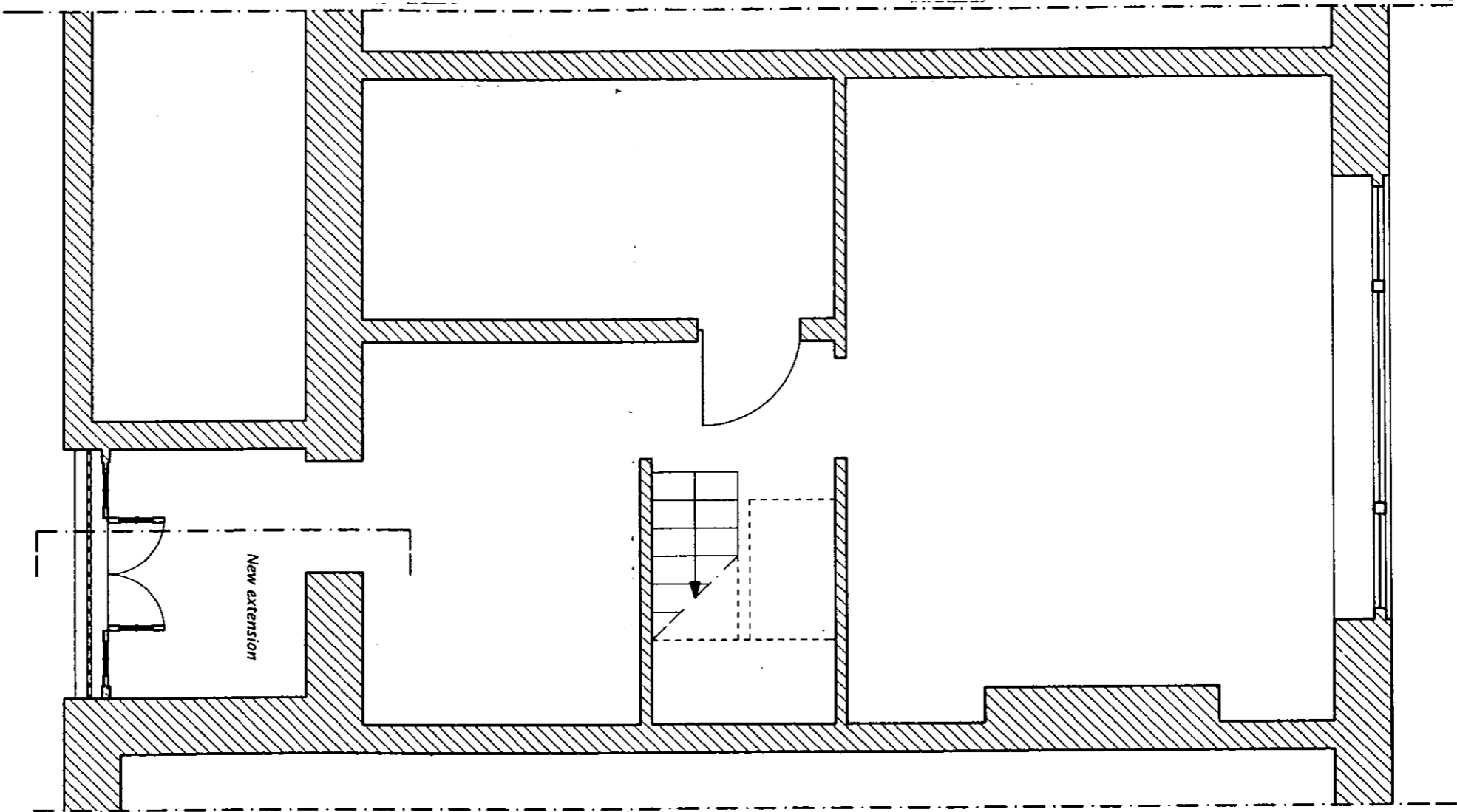
*Existing elevation*

R.B.K. & C.  
TOWN PLANNING

1 5 DEC 2000

RECEIVED

PP002873



SCALA 1:50

*Proposed floor plan*

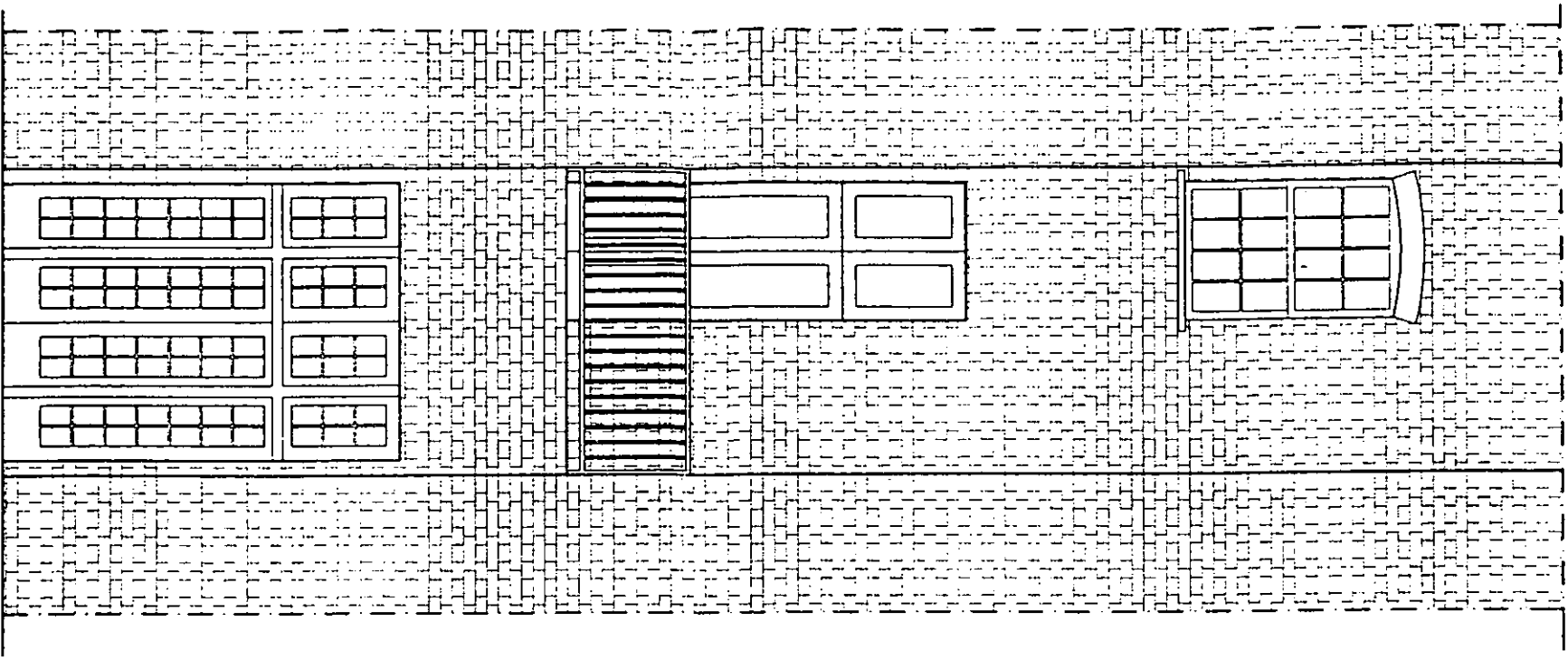
New extension

PP002873

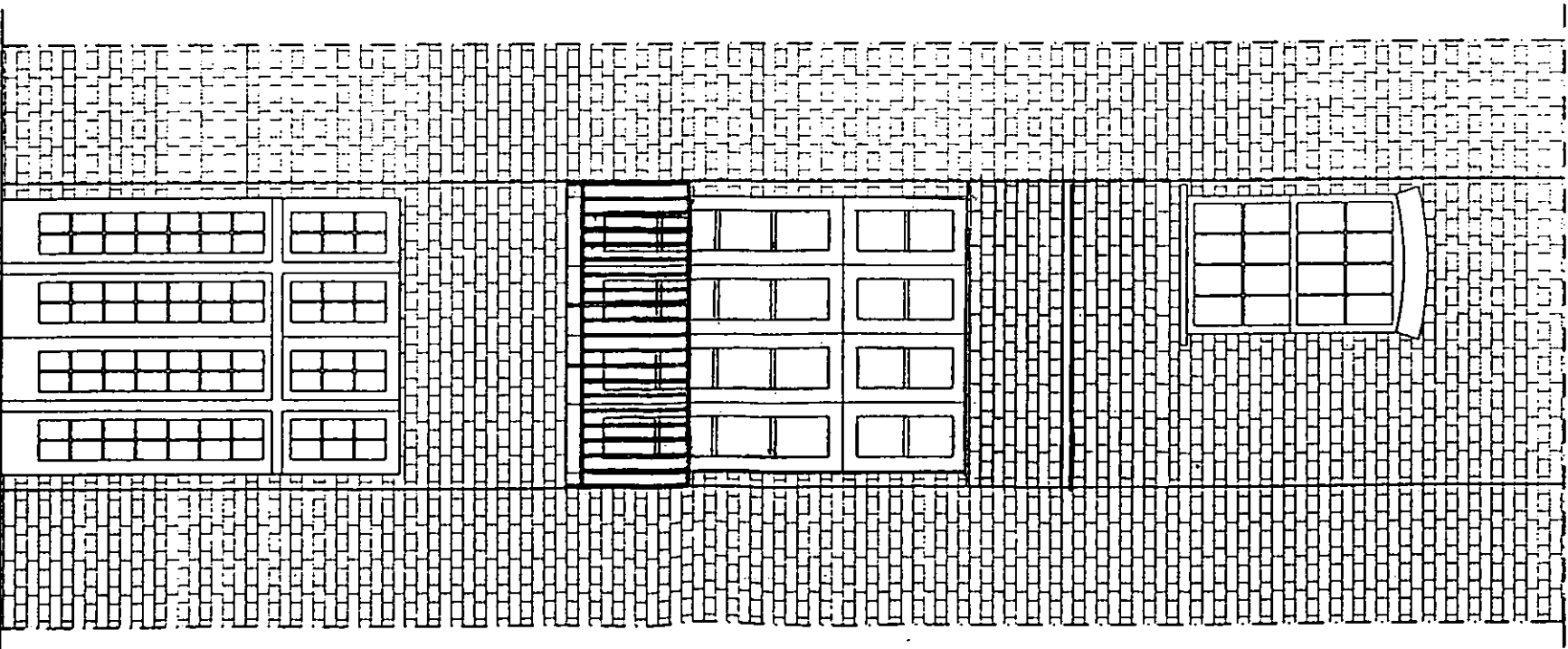
R.B.K. & C.  
TOWN PLANNING  
1 5 DEC 2000  
RECEIVED

DELEGATED  
APPROVAL  
21 MAR 2001

R.B.K. & C.  
TOWN PLANNING  
29 JAN 2001  
RECEIVED



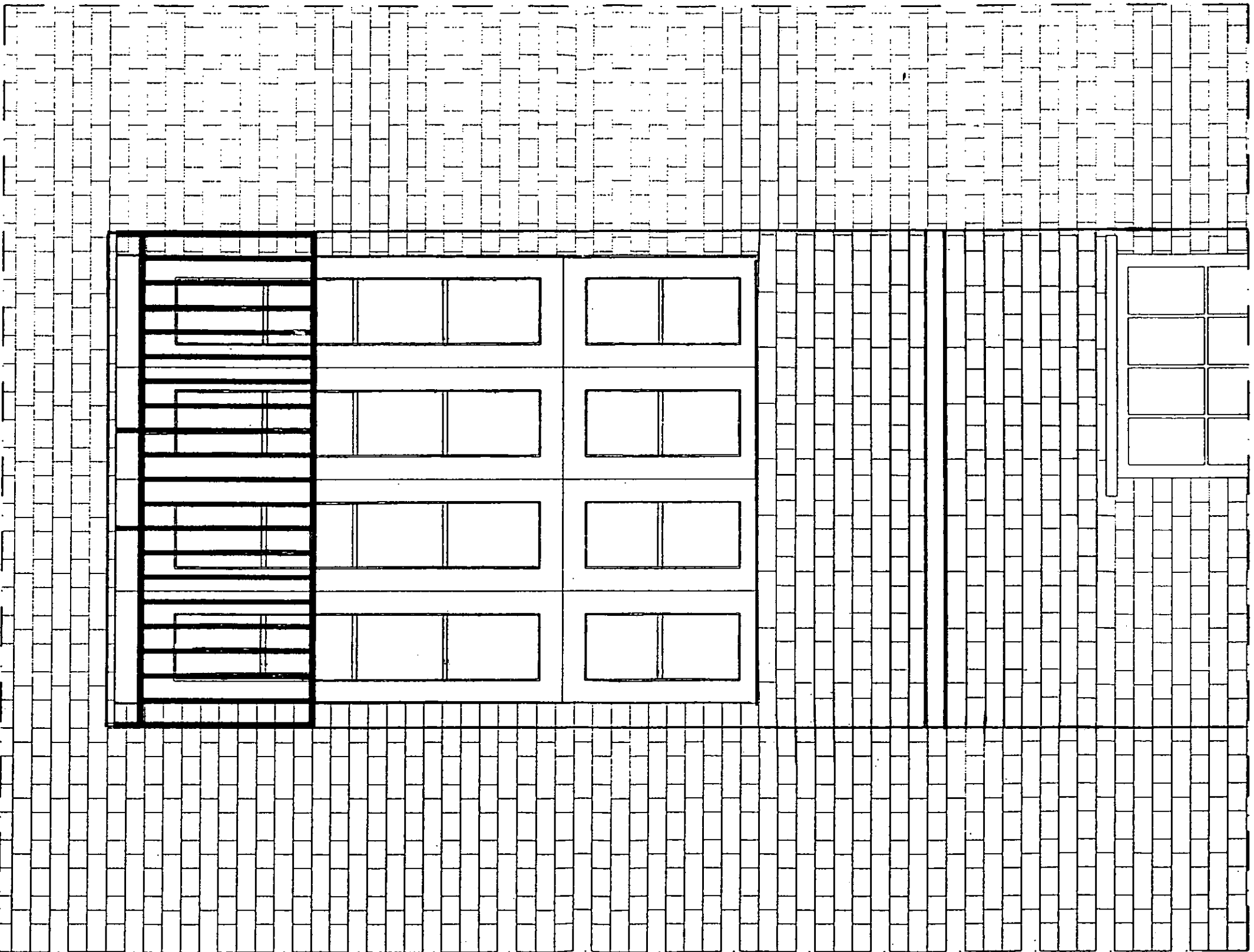
Existing elevation



Proposed elevation

SCALA 1:50

ref 012873A



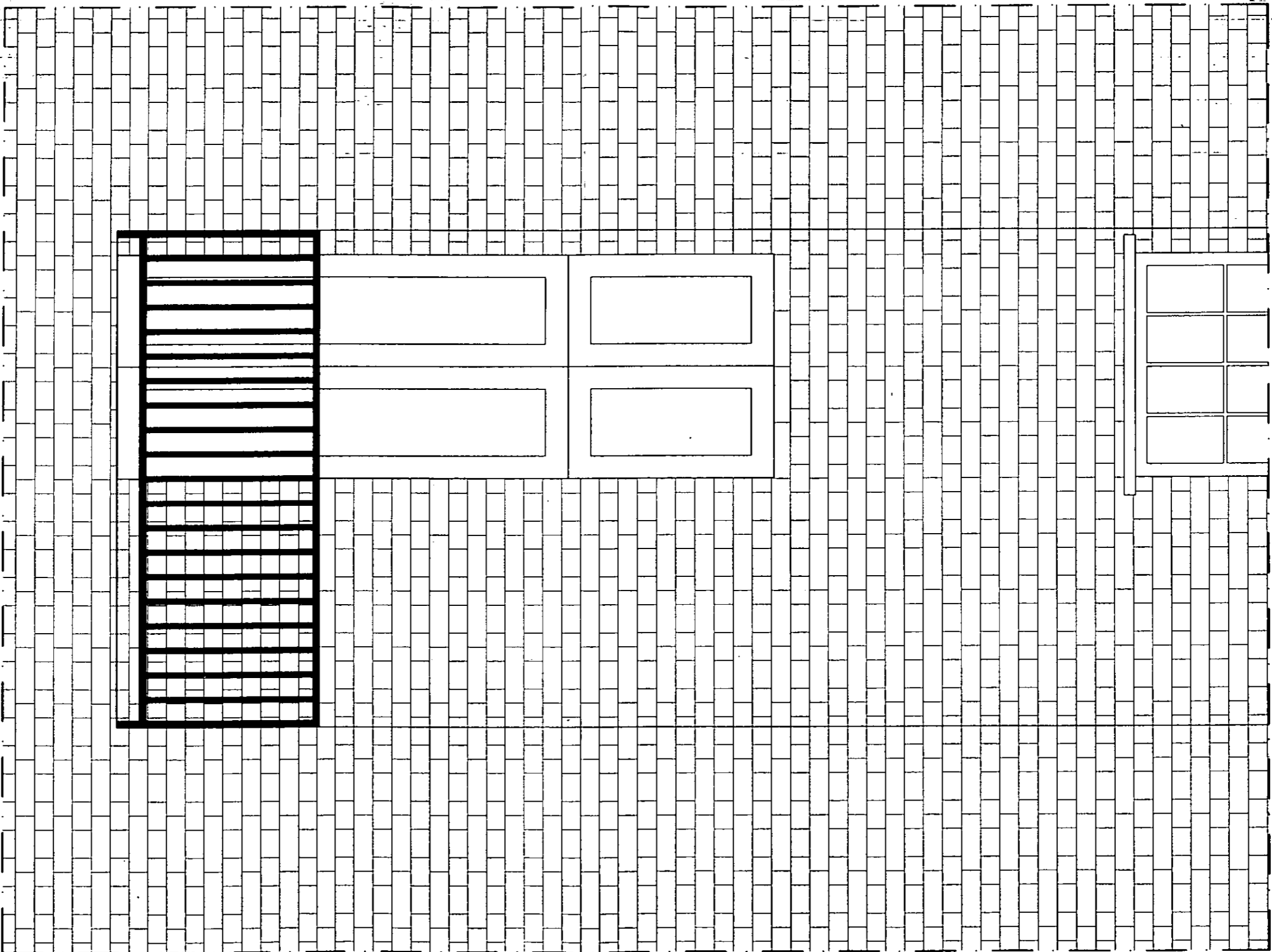
DELEGATED  
APPROVAL  
21 MAR 2001

R.B.K. & C.  
TOWN PLANNING  
29 JAN 2001  
RECEIVED

Proposed elevation

PA/00/2873A

SCALE 1:20



DELEGATED  
APPROVAL  
21 MAR 2001

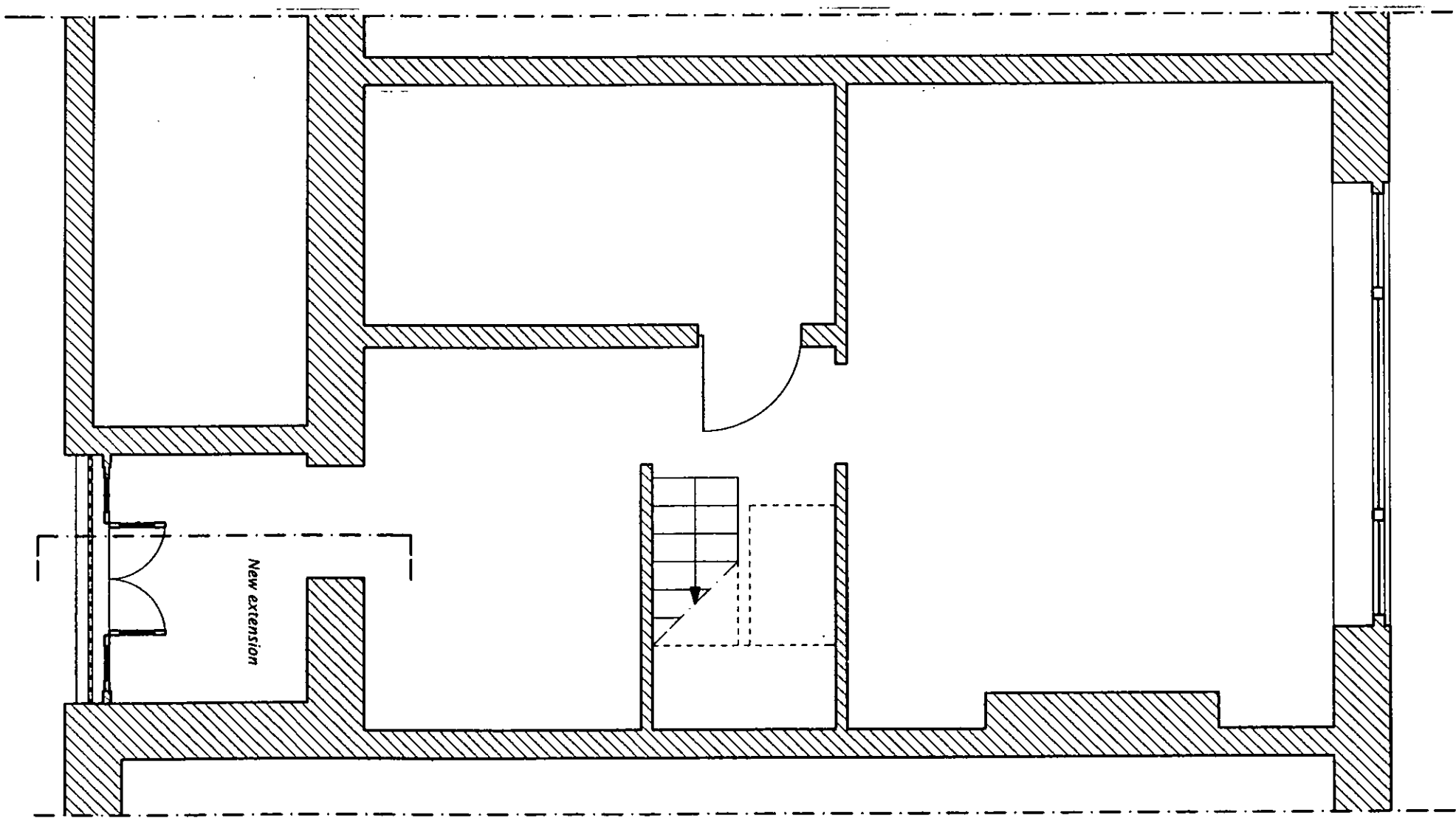
*Existing elevation*

SCALE 1:20

R.B.K. & C.  
TOWN PLANNING  
15 DEC 2000  
RECEIVED

PP002873

DELEGATED  
APPROVAL  
21 MAR 2001



*Proposed floor plan*

SCALA 1:50

New extension

PP002873

R.B.K. & C.  
TOWN PLANNING  
15 DEC 2000  
RECEIVED