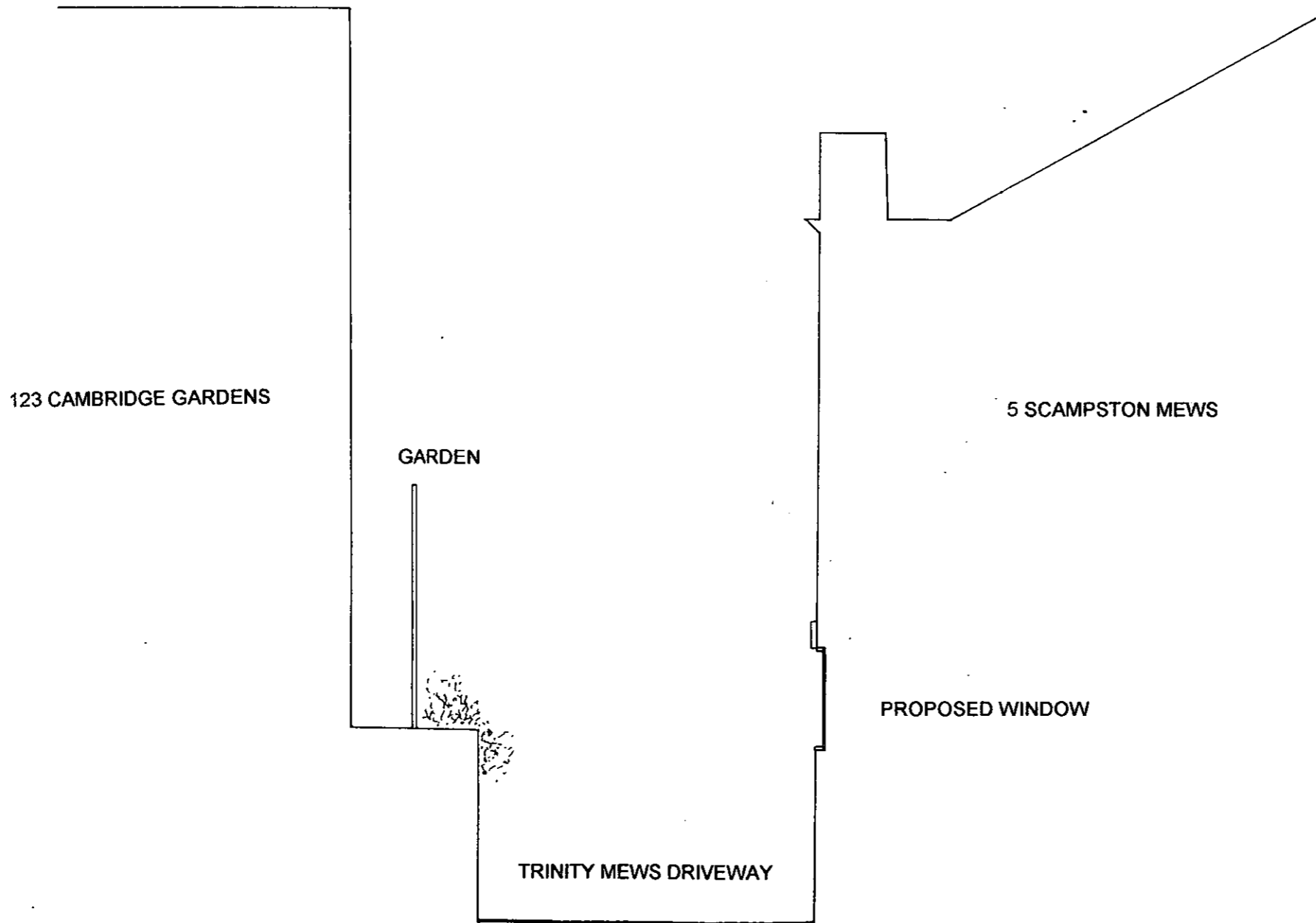


DELEGATED
APPROVAL
31 JAN 2001

PP002914

P.R.K. & C.
TOWN PLANNING
NO.9
20 DEC 2000
RECEIVED

WINDOW MODIFICATIONS TO 5A
SCAMPSTON MEWS W10
SITE PLAN **A1.01**
SCALE: 1:100

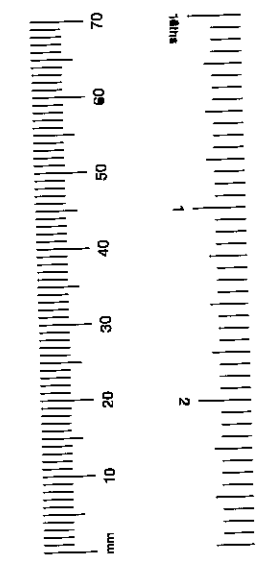


DELEGATED
APPROVAL
31 JAN 2001

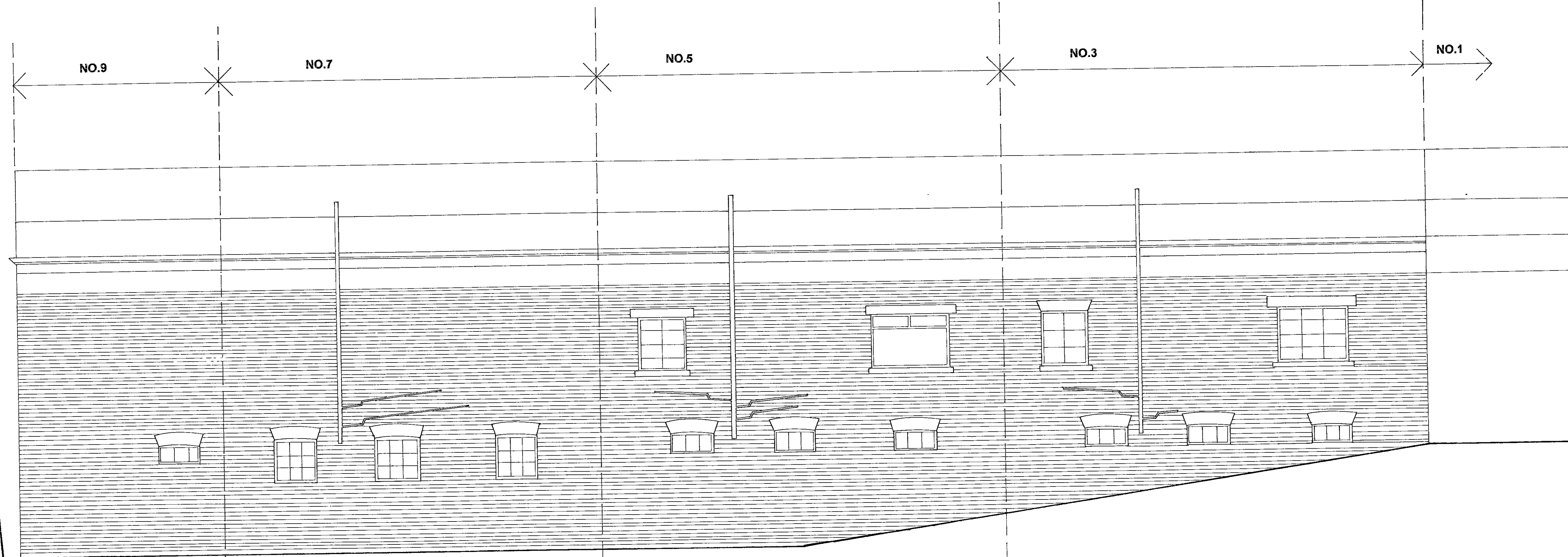
PP002914

R.B.K. & C.
TOWN PLANNING
20 DEC 2000
RECEIVED

WINDOW MODIFICATIONS TO 5A
SCAMPSTON MEWS W10
SECTION A-A **A1.04**
SCALE: 1:100



202914



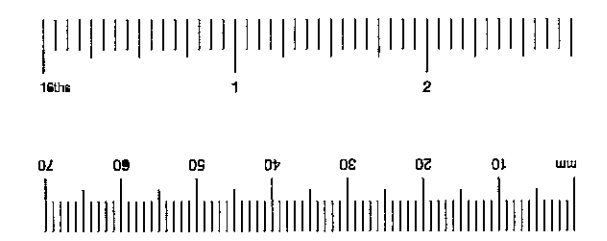
WG1 WG2 WG3 (EXISTING)

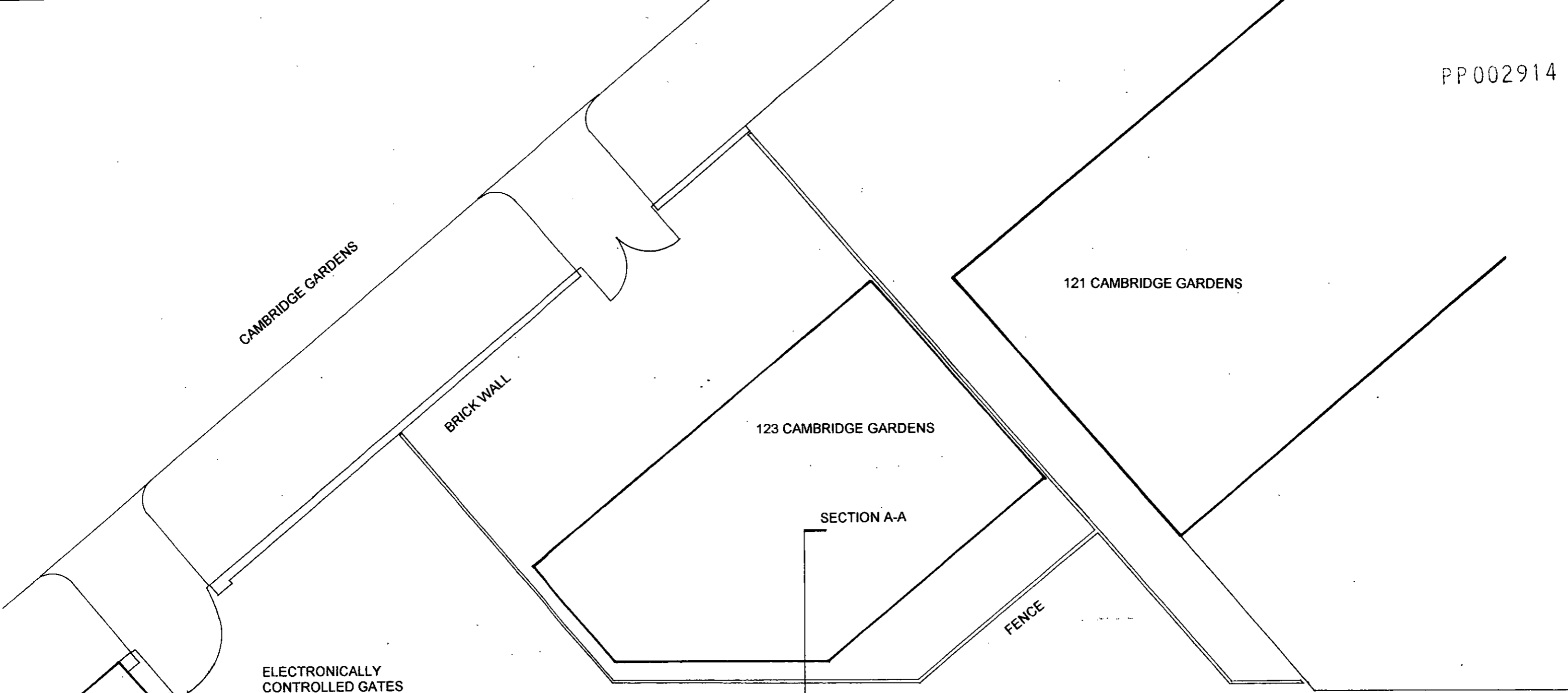
R.B.K. & C.
TOWN PLANNING
20 DEC 2000
RECEIVED

PP002914

R.B.K. & C.
TOWN PLANNING
20 DEC 2000
RECEIVED

WINDOW MODIFICATIONS TO 5A
SCAMPSTON MEWS W10
EXISTING ELEVATION **A1.02**
SCALE 1:50





ELECTRONICALLY CONTROLLED GATES

BRICK WALL

123 CAMBRIDGE GARDENS

121 CAMBRIDGE GARDENS

SECTION A-A

FENCE

TRINITY MEWS DRIVEWAY (PRIVATE ROADWAY)

NO.1

NO.3

NO.5

NO.7

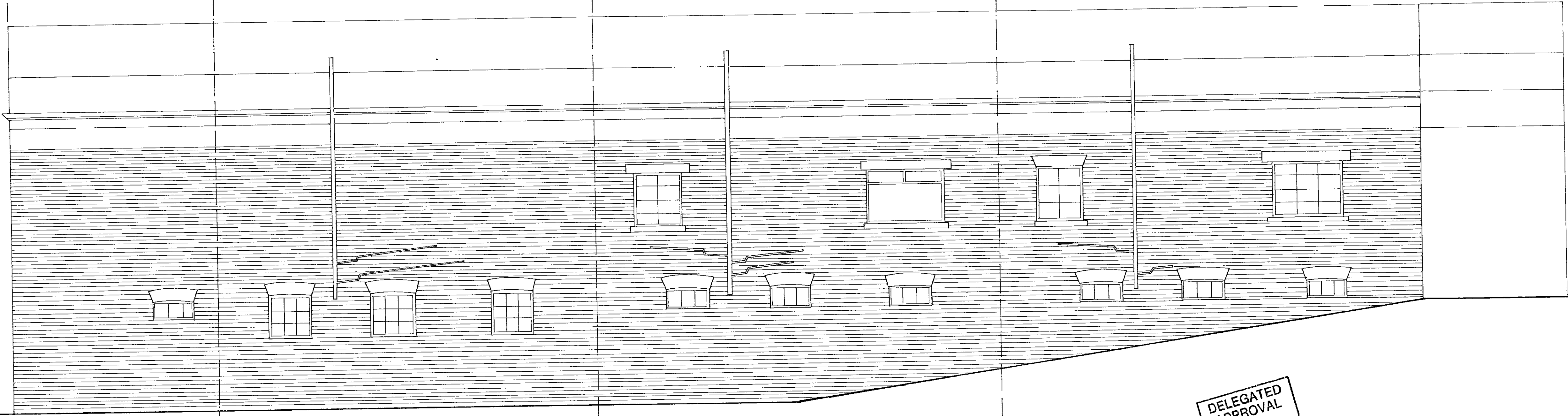
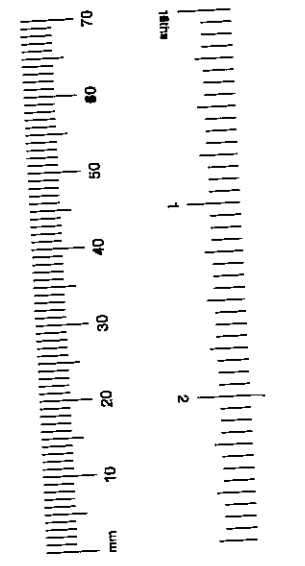
SCAMPSTON MEWS

NO.9 R.B.K. & C
 TOWN PLANNING
 20 DEC 2000
 RECEIVED

WINDOW MODIFICATIONS TO 5A SCAMPSTON MEWS W10

SITE PLAN **A1.01**

SCALE: 1:100

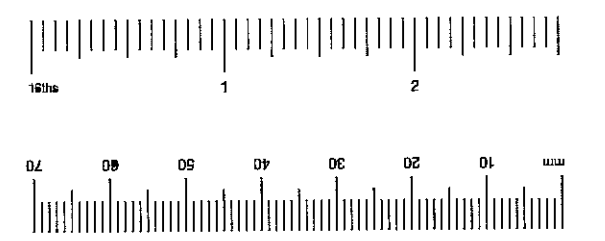


TP/00/2914

PP002914

R.B.K. & C.
TOWN PLANNING
20 DEC 2000
RECEIVED

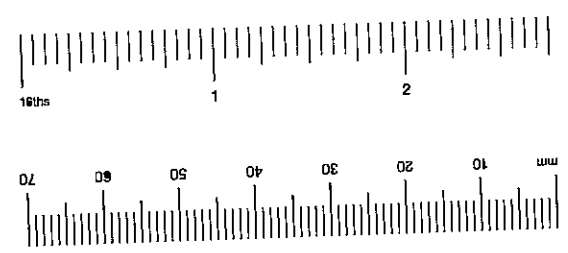
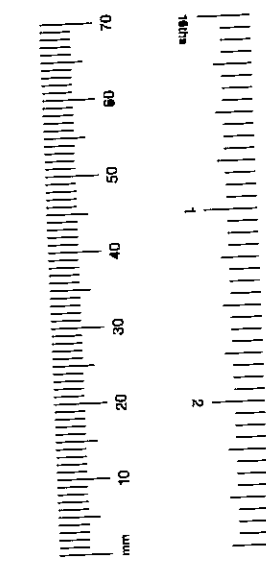
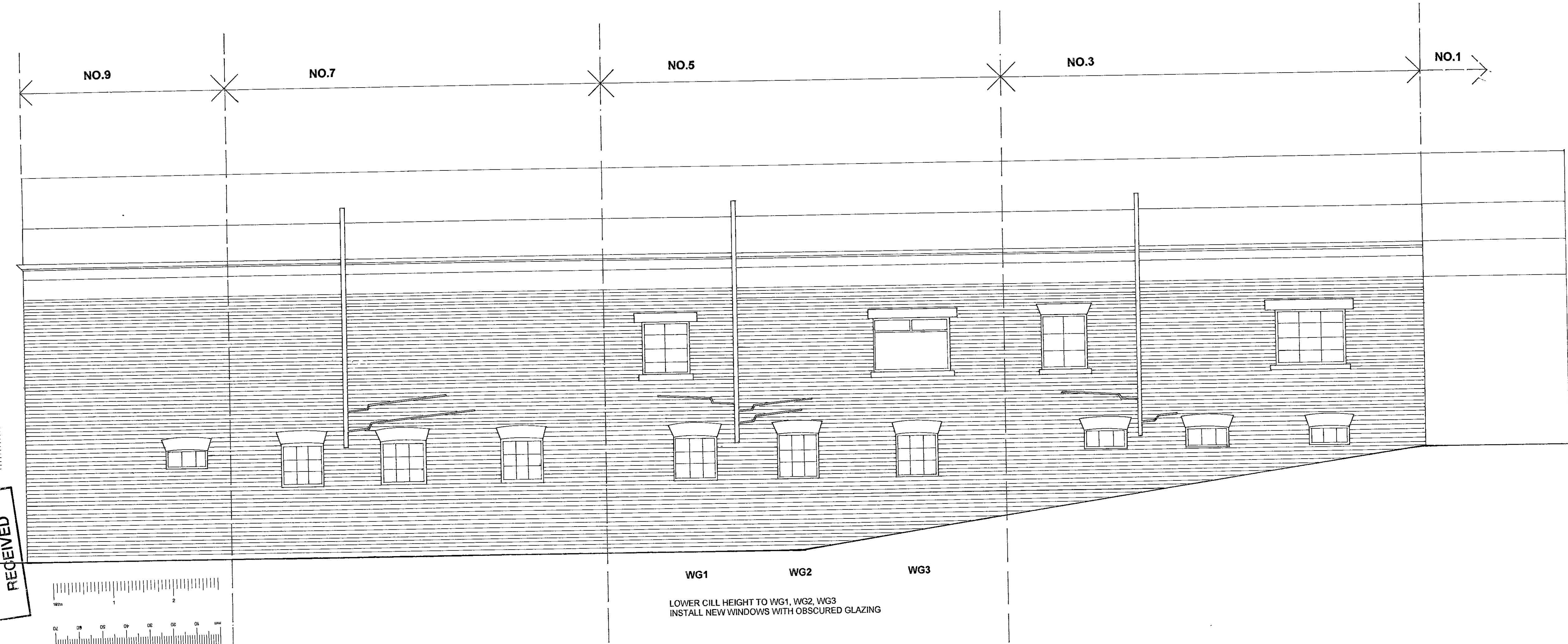
R.B.K. & C.
TOWN PLANNING
20 DEC 2000
RECEIVED



WG1 WG2 WG3 (EXISTING)

DELEGATED
APPROVAL
31 JAN 2001

WINDOW MODIFICATIONS TO 5A
SCAMPSTON MEWS W10
EXISTING ELEVATION **A1.02**
SCALE 1:50



R.B.K. & C.
TOWN PLANNING
20 DEC 2000
RECEIVED

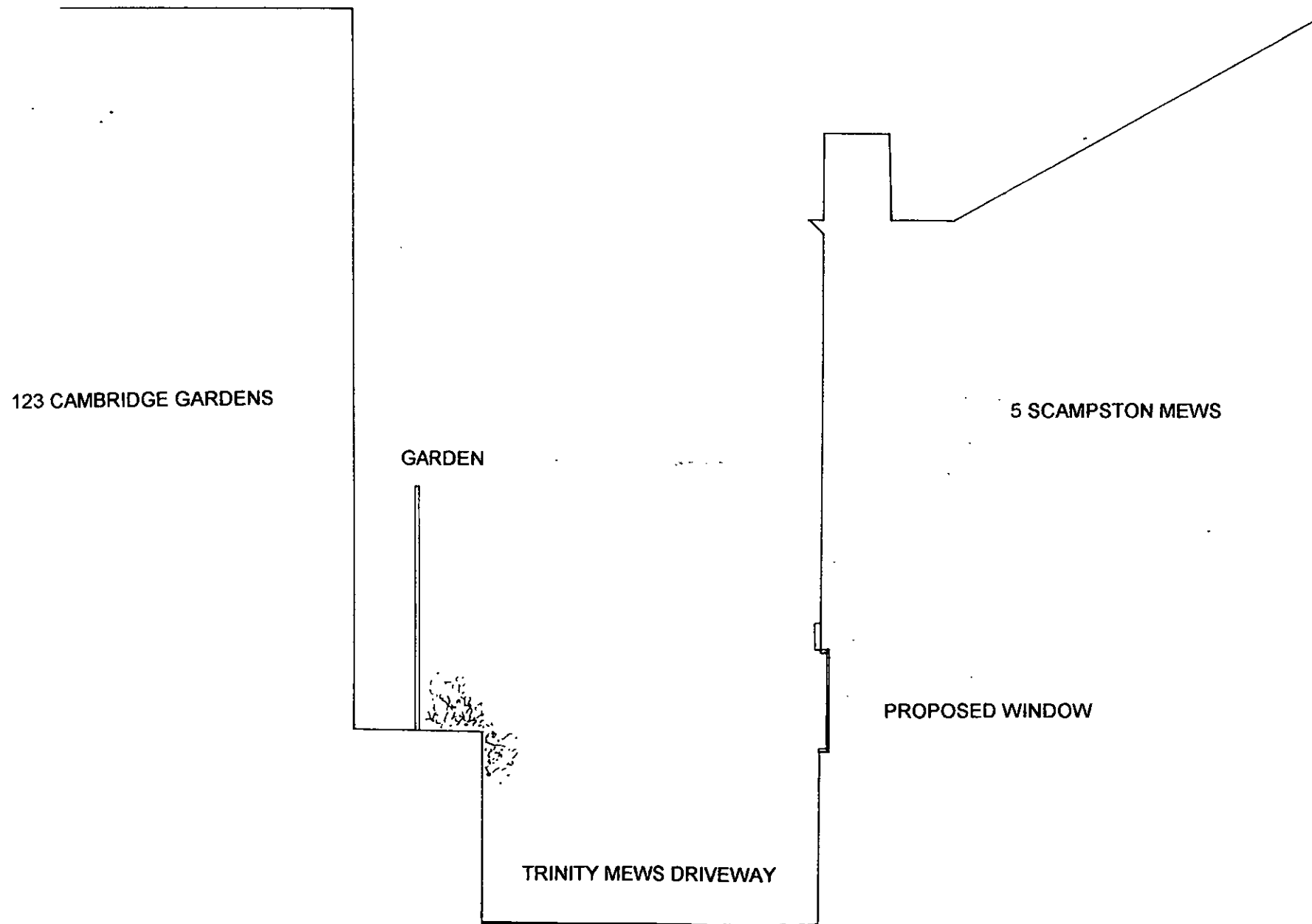
WG1 WG2 WG3

LOWER CILL HEIGHT TO WG1, WG2, WG3
INSTALL NEW WINDOWS WITH OBSCURED GLAZING

PP002914

R.B.K. & C.
TOWN PLANNING
20 DEC 2000
RECEIVED

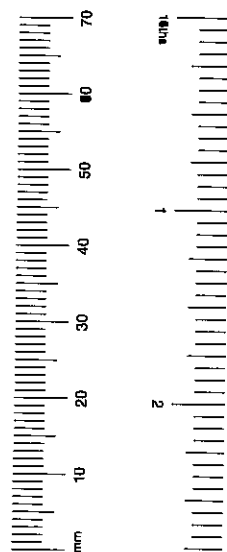
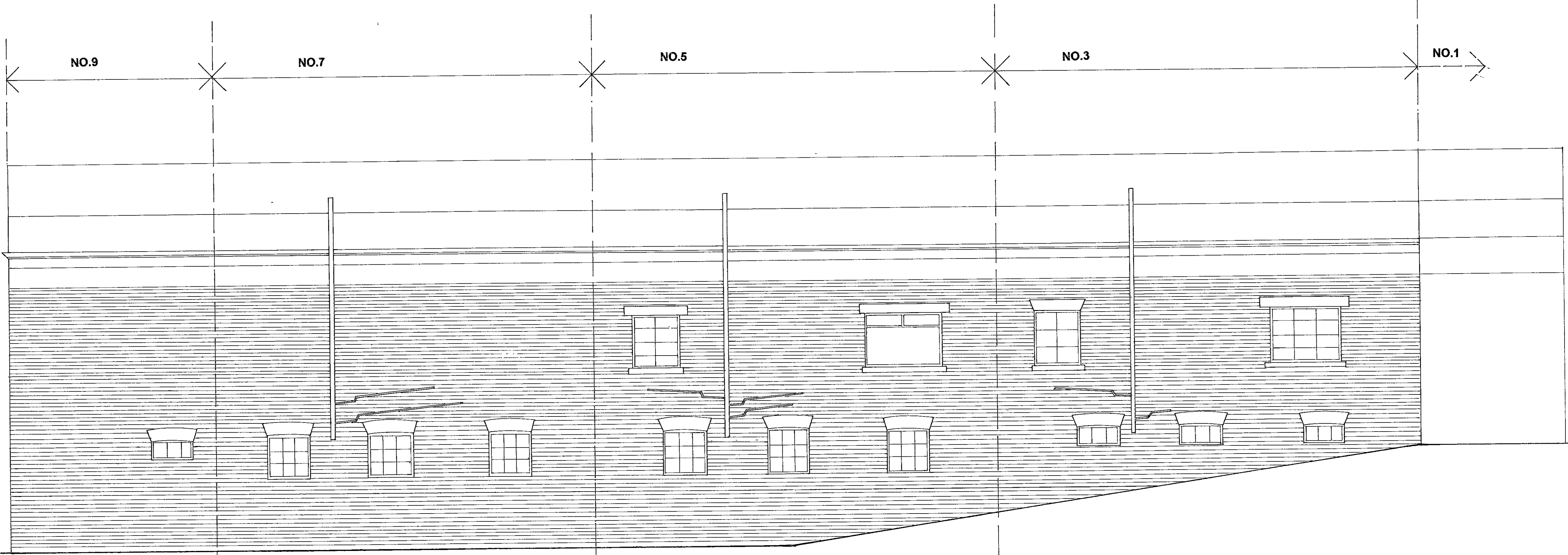
WINDOW MODIFICATIONS TO 5A
SCAMPSTON MEWS W10
PROPOSED ELEVATION **A1.03**
SCALE: 1:50



PP002914

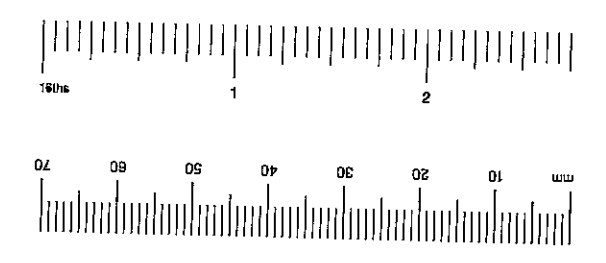
R.B.K. & C.
TOWN PLANNING
20 DEC 2000
RECEIVED

WINDOW MODIFICATIONS TO 5A
SCAMPSTON MEWS W10
SECTION A-A **A1.04**
SCALE: 1:100



PP002914

R.B.K. & C.
TOWN PLANNING
20 DEC 2000
RECEIVED



WG1 WG2 WG3

LOWER CILL HEIGHT TO WG1, WG2, WG3
INSTALL NEW WINDOWS WITH OBSCURED GLAZING

DELEGATED
APPROVAL
31 JAN 2001

R.B.K. & C.
TOWN PLANNING
20 DEC 2000
RECEIVED

WINDOW MODIFICATIONS TO 5A
SCAMPSTON MEWS W10
PROPOSED ELEVATION **A1.03**
SCALE: 1:50