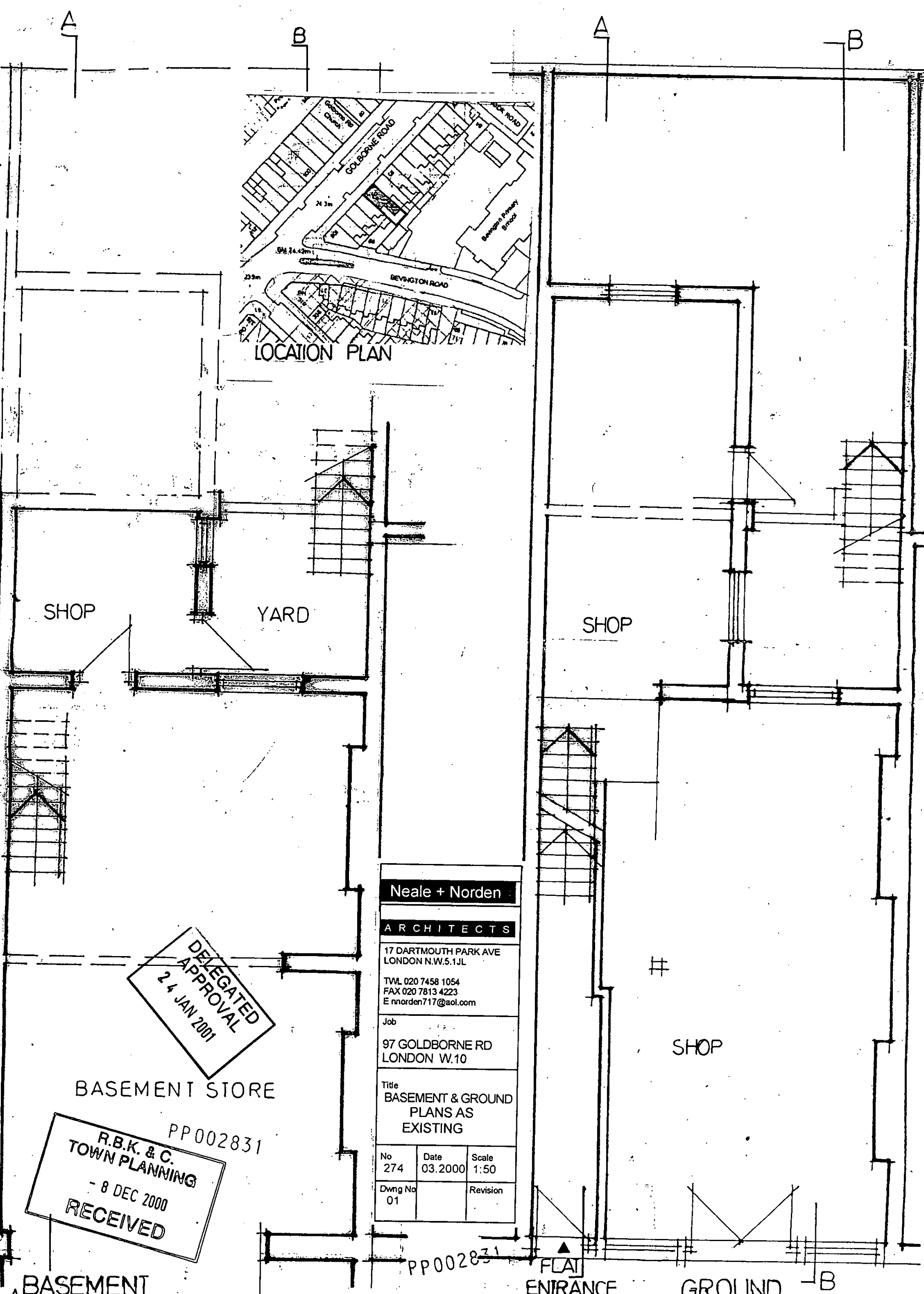


LOCATION PLAN



SHOP

YARD

SHOP

SHOP

DELEGATED
APPROVAL
24 JAN 2001

BASEMENT STORE

Neale + Norden		
ARCHITECTS		
17 DARTMOUTH PARK AVE LONDON N.W.5.1JL		
T.W. 020 7458 1054 FAX 020 7813 4223 E nnorden717@aol.com		
Job		
97 GOLDBORNE RD LONDON W.10		
Title		
BASEMENT & GROUND PLANS AS EXISTING		
No	Date	Scale
274	03.2000	1:50
Dwng No	Revision	
01		

R.B.K. & C.
TOWN PLANNING
- 8 DEC 2000
RECEIVED

PP002831

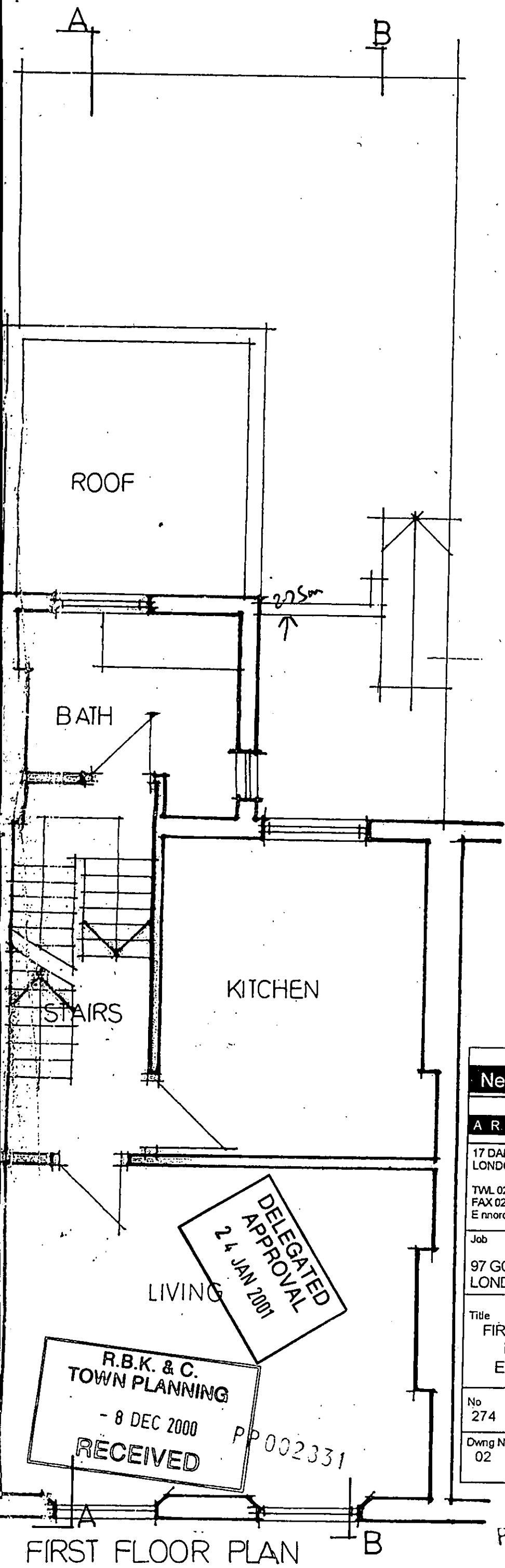
PP002831

FLA
ENTRANCE

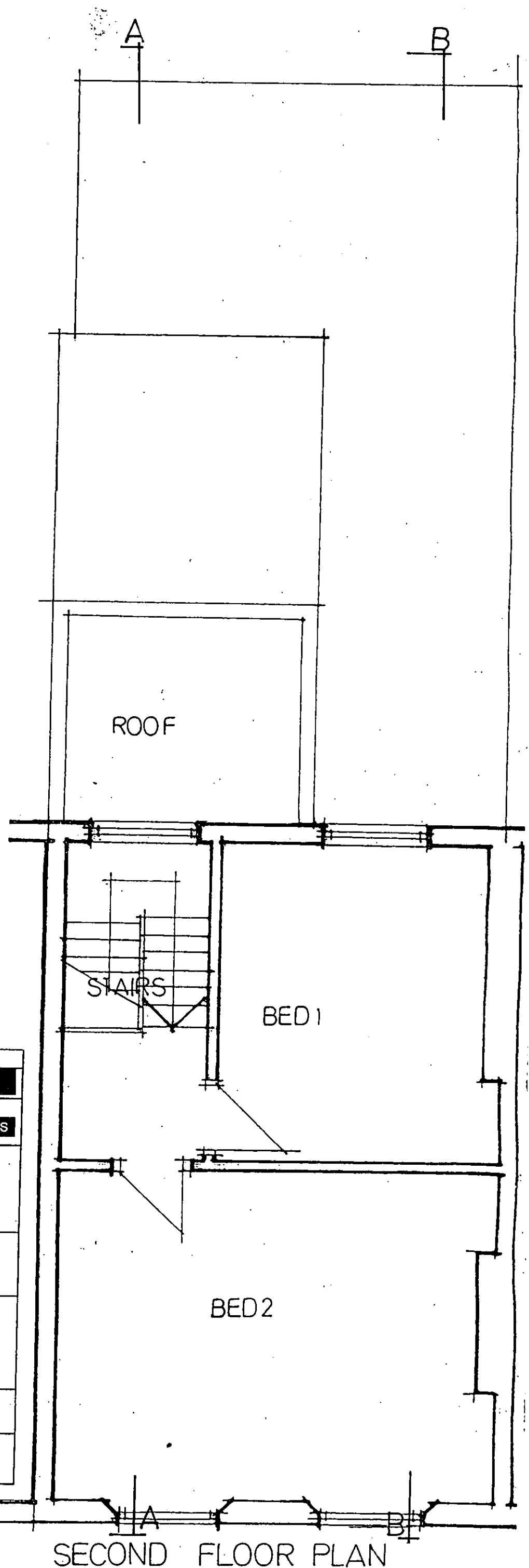
GROUND

BASEMENT

-B



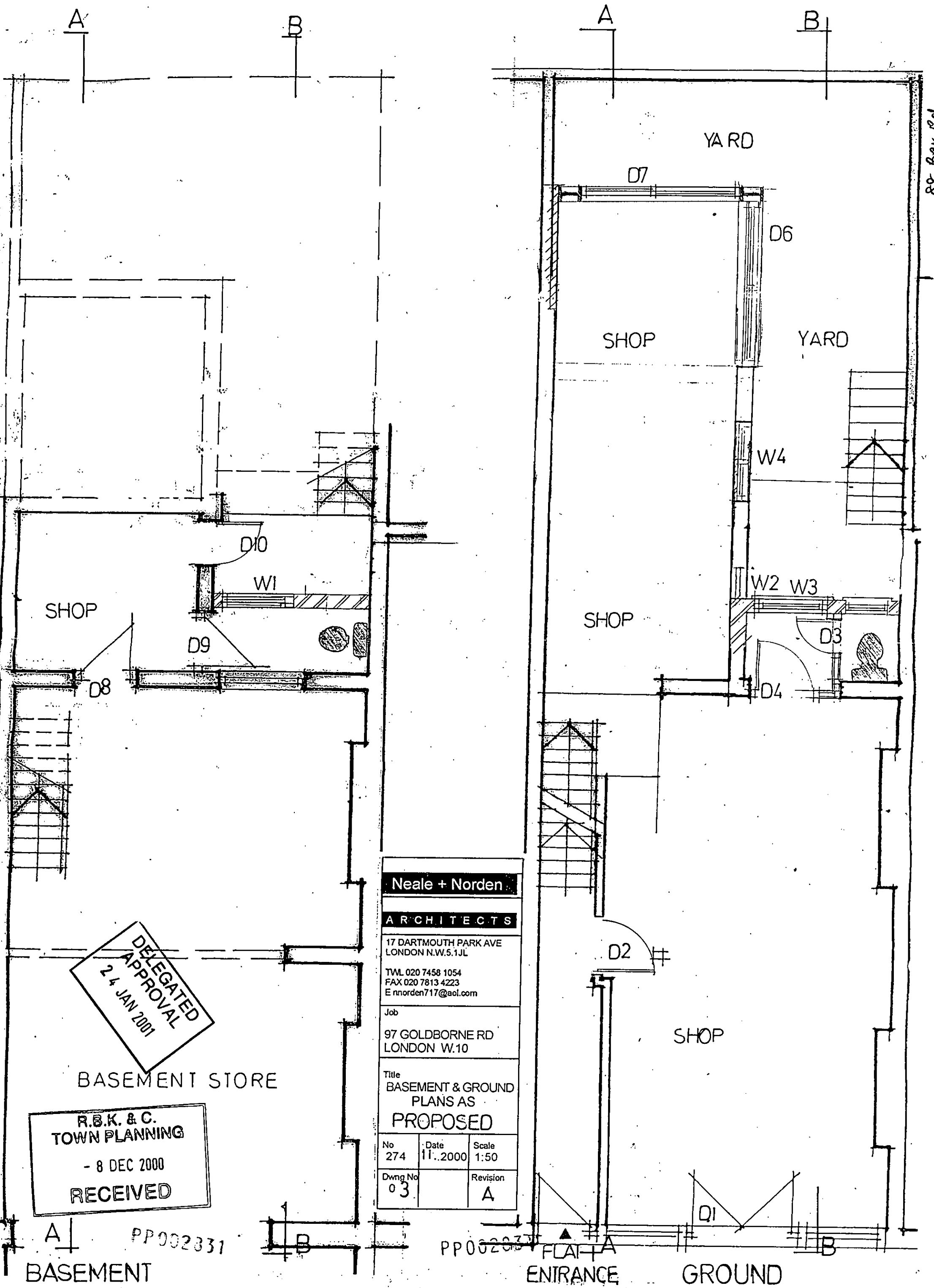
FIRST FLOOR PLAN



SECOND FLOOR PLAN

Neale + Norden		
ARCHITECTS		
17 DARTMOUTH PARK AVE LONDON N.W.5.1JL		
T.W. 020 7458 1054 FAX 020 7813 4223 E nnorden717@aol.com		
Job		
97 GOLDBORNE RD LONDON W.10		
Title		
FIRST & SECOND PLANS AS EXISTING		
No	Date	Scale
274	03.2000	1:50
Dwng No	Revision	
02		

PP002831



**DELEGATED
 APPROVAL
 24 JAN 2001**

BASEMENT STORE

**R.B.K. & C.
 TOWN PLANNING**
 - 8 DEC 2000
RECEIVED

Neale + Norden		
ARCHITECTS		
17 DARTMOUTH PARK AVE LONDON N.W.5.1JL		
TEL 020 7458 1054 FAX 020 7813 4223 E nnorden717@aol.com		
Job		
97 GOLDBORNE RD LONDON W.10		
Title		
BASEMENT & GROUND PLANS AS PROPOSED		
No 274	Date 11.2000	Scale 1:50
Dwg No 03	Revision A	

PP002331

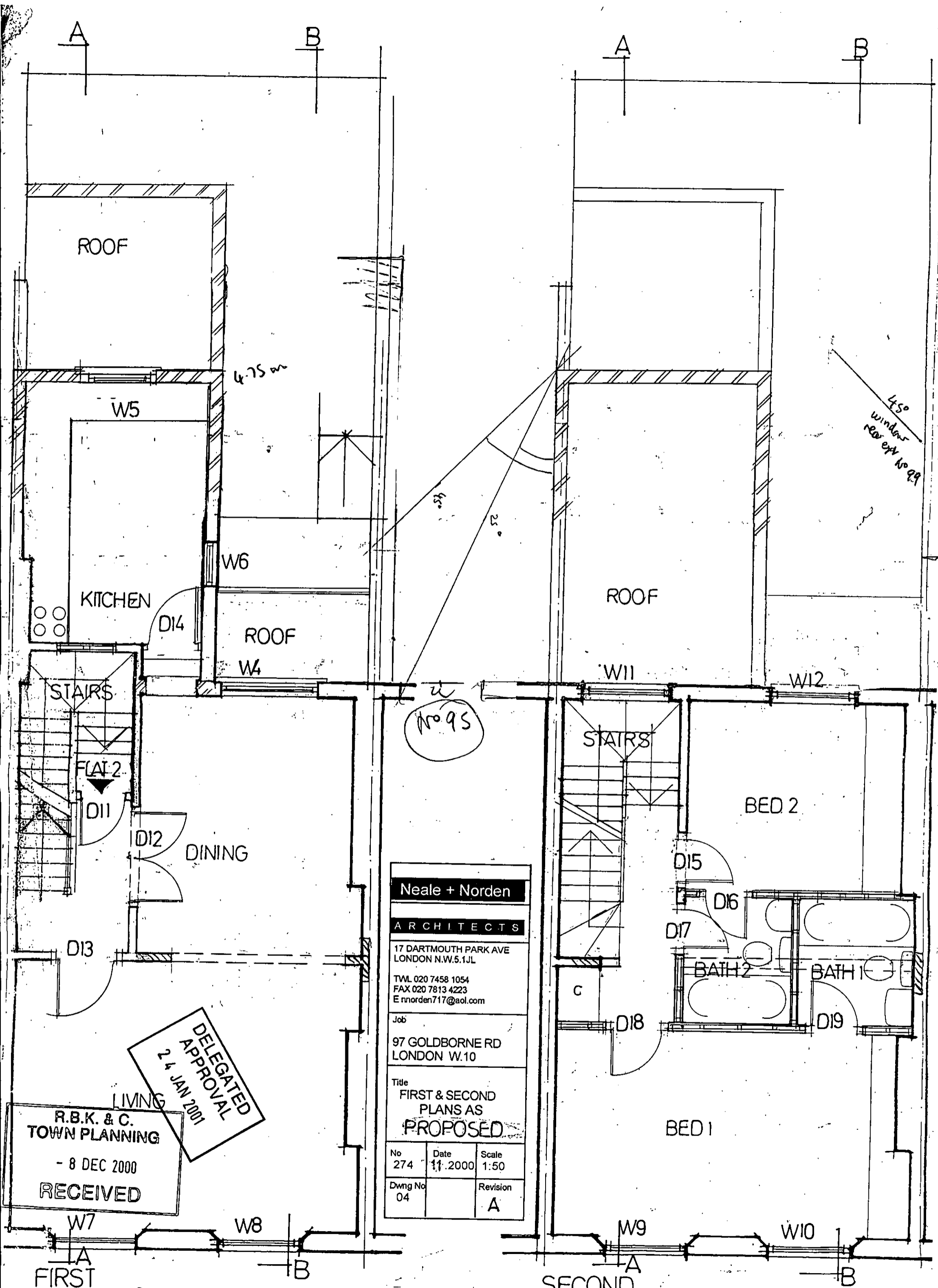
PP002331

BASEMENT

ENTRANCE

GROUND

89 Ber Rd



no 95

Neale + Norden
ARCHITECTS
 17 DARTMOUTH PARK AVE
 LONDON N.W.5.1JL
 TWL 020 7458 1054
 FAX 020 7813 4223
 E nnorden717@aol.com

Job
 97 GOLDBORNE RD
 LONDON W.10

Title
 FIRST & SECOND
 PLANS AS
PROPOSED

No 274	Date 11.2000	Scale 1:50
Dwng No 04	Revision A	

**DELEGATED
 APPROVAL
 24 JAN 2001**

**R.B.K. & C.
 TOWN PLANNING**
 - 8 DEC 2000
RECEIVED

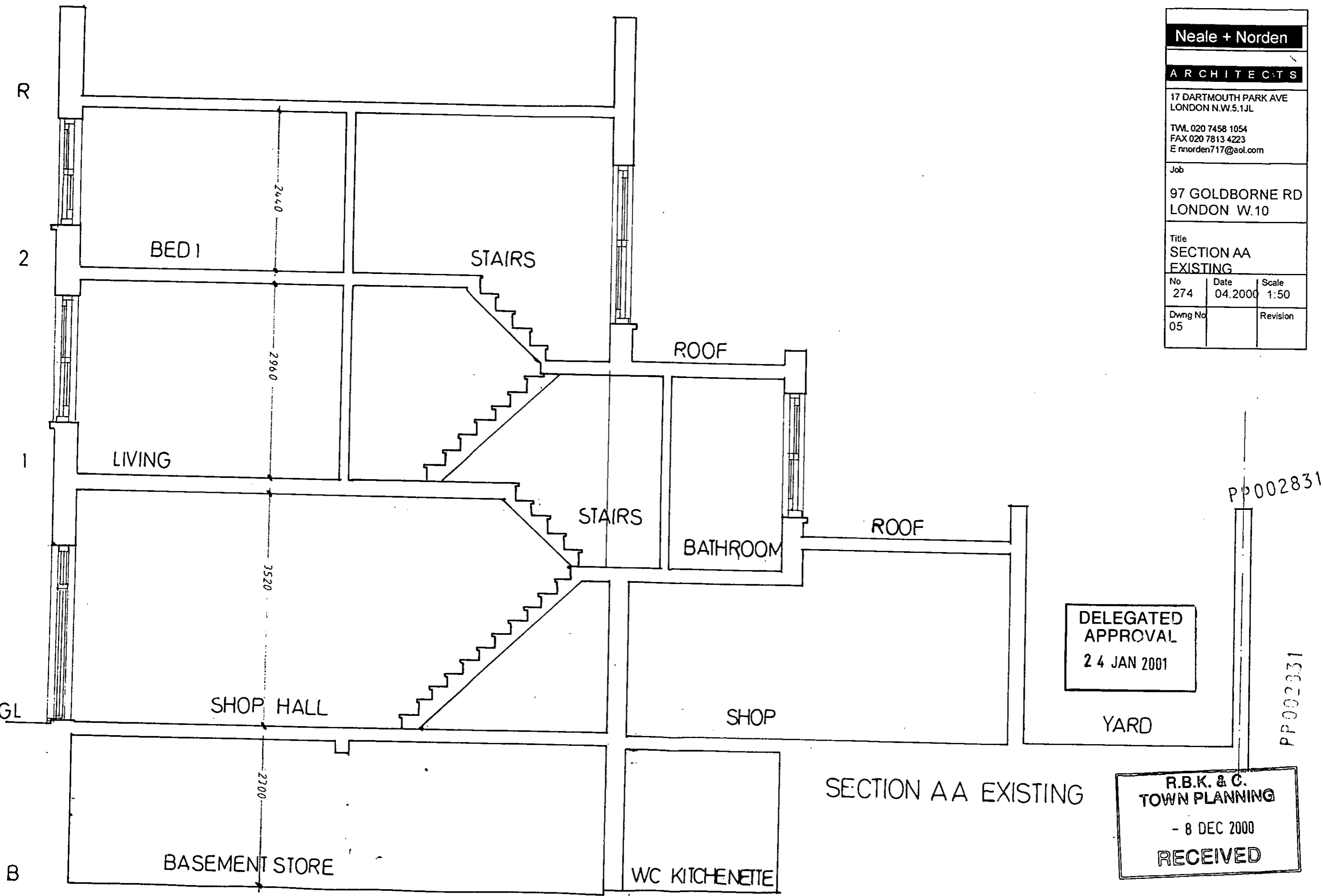
PP002831

PP002831

FIRST

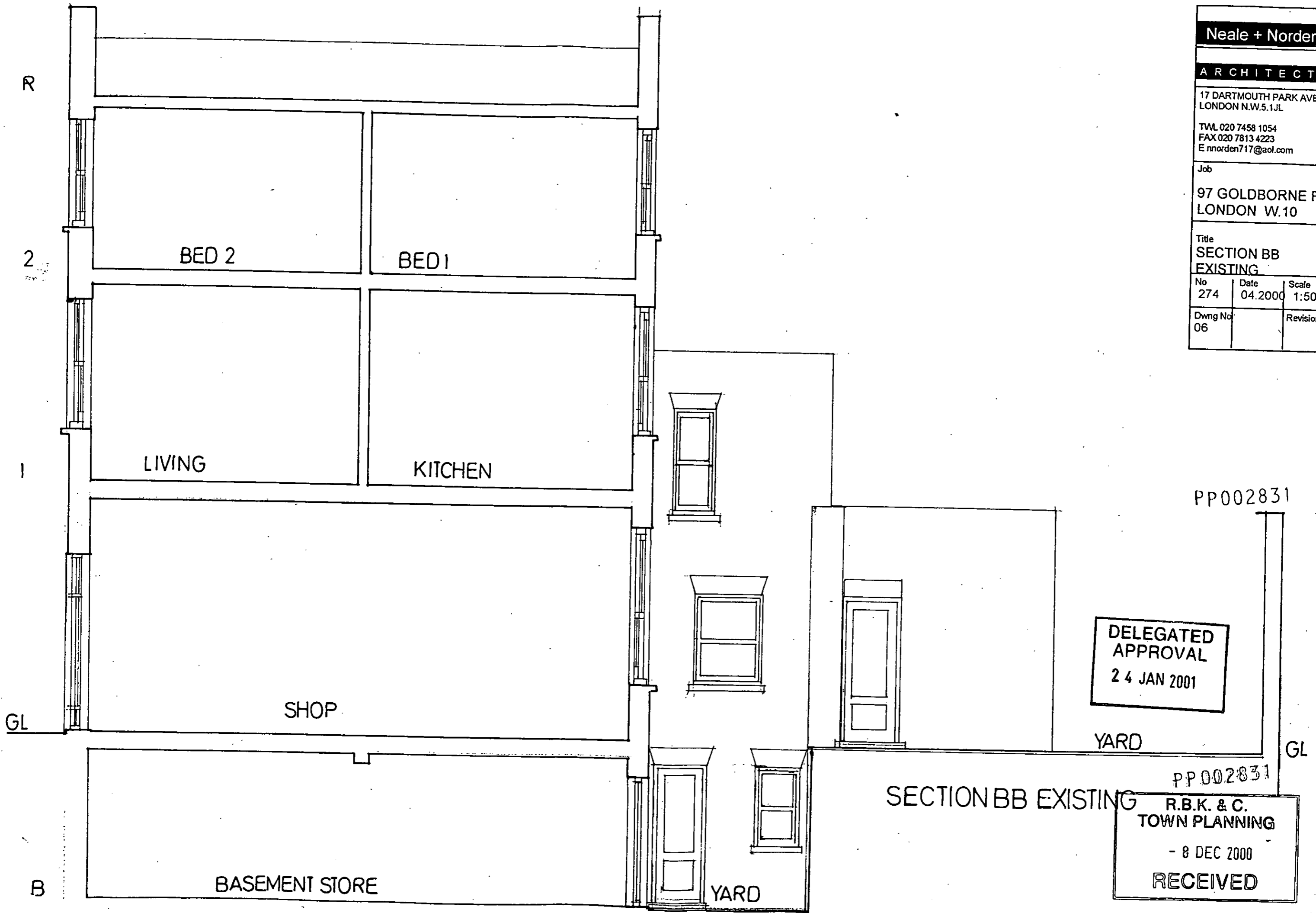
SECOND

Neale + Norden		
ARCHITECTS		
17 DARTMOUTH PARK AVE LONDON N.W.5.1JL		
T.VL 020 7458 1054 FAX 020 7813 4223 E nnorden717@aol.com		
Job		
97 GOLDBORNE RD LONDON W.10		
Title SECTION AA EXISTING		
No	Date	Scale
274	04.2000	1:50
Dwng No		Revision
05		



SECTION AA EXISTING

R.B.K. & C.
TOWN PLANNING
- 8 DEC 2000
RECEIVED



Neale + Norden		
ARCHITECTS		
17 DARTMOUTH PARK AVE LONDON N.W.5.1JL		
T/WL 020 7458 1054 FAX 020 7813 4223 E nnorden717@aol.com		
Job		
97 GOLDBORNE RD LONDON W.10		
Title		
SECTION BB EXISTING		
No	Date	Scale
274	04.2000	1:50
Dwng No		Revision
06		

**DELEGATED
APPROVAL**
24 JAN 2001

PP002831
R.B.K. & C.
TOWN PLANNING
 - 8 DEC 2000
RECEIVED

SECTION BB EXISTING

PP002831

PP002831

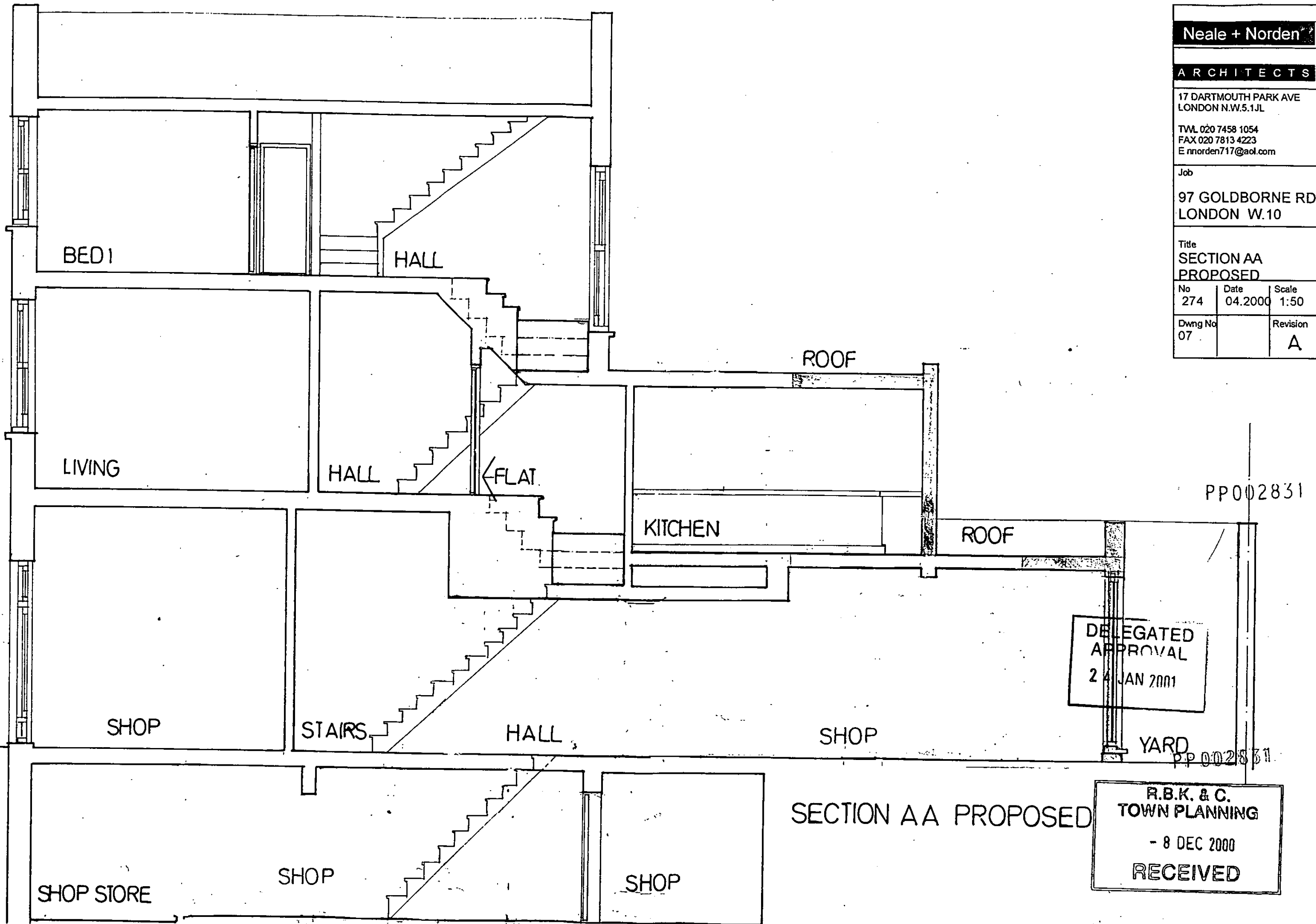
R

2

1

GL

B



Neale + Norden

ARCHITECTS

17 DARTMOUTH PARK AVE
LONDON N.W.5.1JL

Tel 020 7458 1054
FAX 020 7813 4223
E nnorden717@aol.com

Job
97 GOLDBORNE RD
LONDON W.10

Title
SECTION AA
PROPOSED

No	Date	Scale
274	04.2000	1:50

Dwng No	Revision
07	A

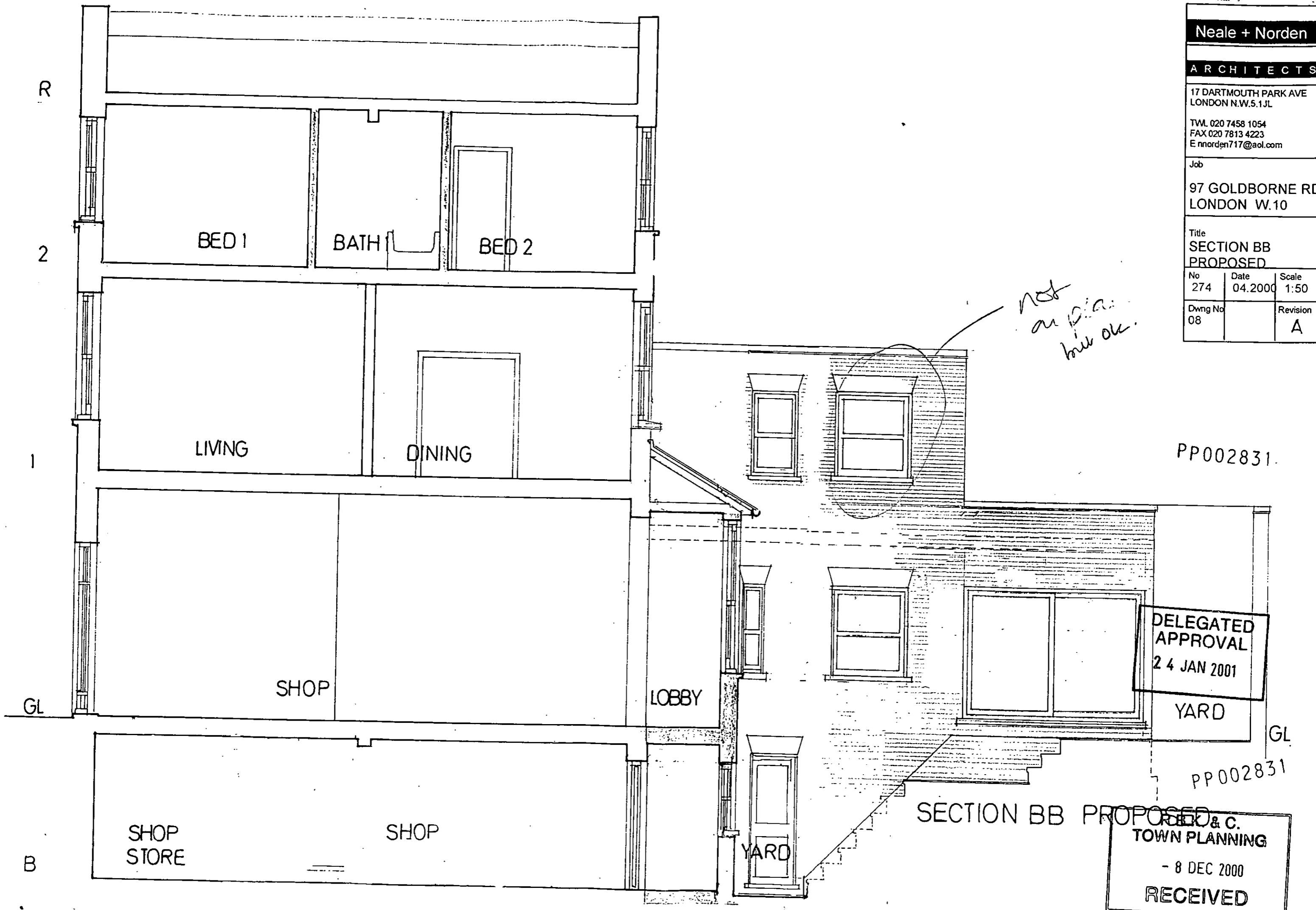
PP002831

DELEGATED
APPROVAL
24 JAN 2001

YARD
PP002831

SECTION AA PROPOSED

R.B.K. & C.
TOWN PLANNING
- 8 DEC 2000
RECEIVED



Neale + Norden		
ARCHITECTS		
17 DARTMOUTH PARK AVE LONDON N.W.5.1JL		
TWM 020 7458 1054 FAX 020 7813 4223 E nnorden717@aol.com		
Job		
97 GOLDBORNE RD LONDON W.10		
Title		
SECTION BB PROPOSED		
No	Date	Scale
274	04.2000	1:50
Dwng No		Revision
08		A

not on dia. but ok.

PP002831

DELEGATED
APPROVAL
24 JAN 2001

YARD

PP002831

SECTION BB PROPOSED

RECEIVED
TOWN PLANNING
- 8 DEC 2000

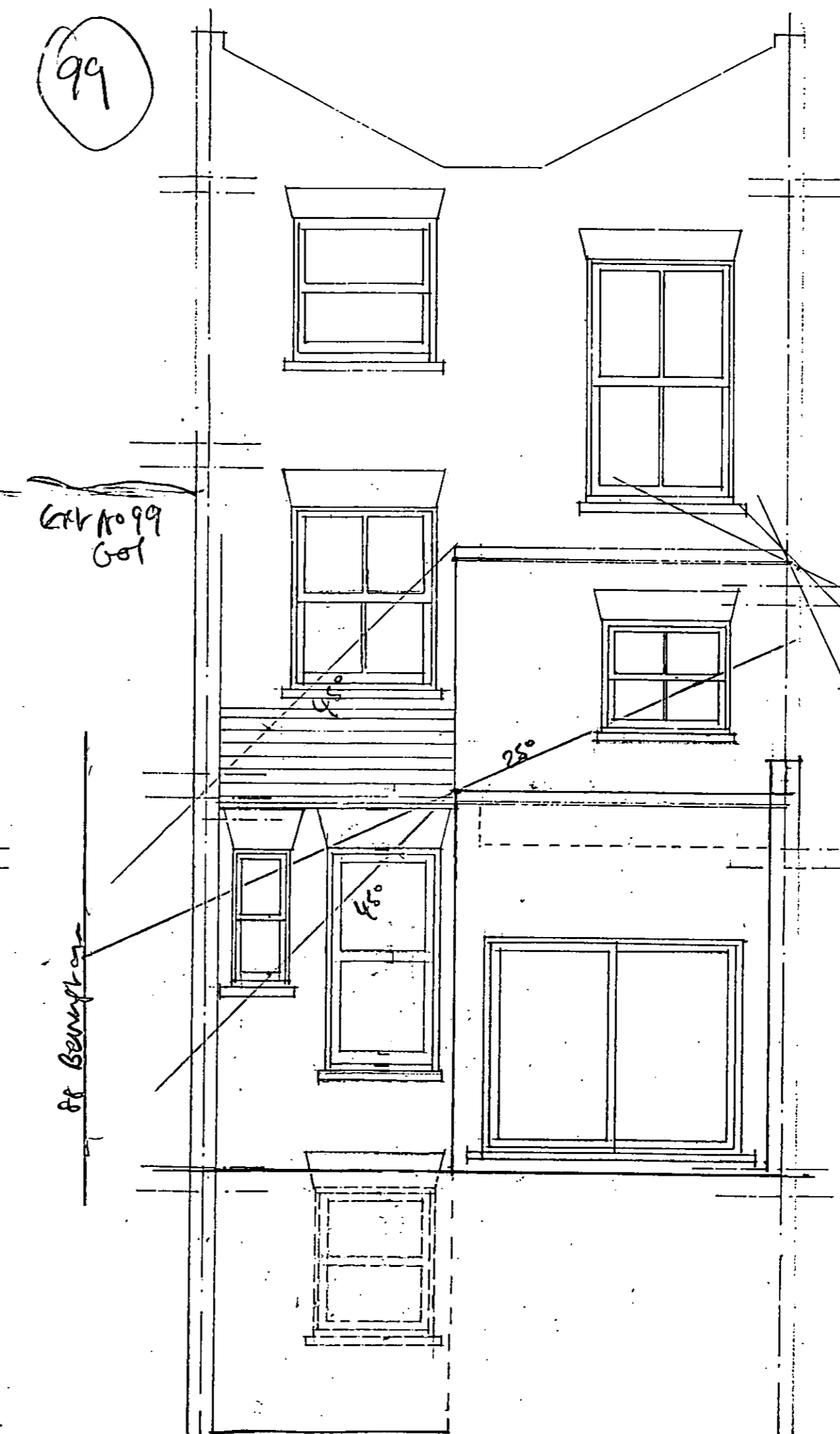
99

95

Neale + Norden		
ARCHITECTS		
17 DARTMOUTH PARK AVE LONDON N.W.5.1JL		
TWM 020 7458 1054 FAX 020 7813 4223 E nnorden717@aol.com		
Job		
97 GOLDBORNE RD LONDON W.10		
Title		
REAR ELEVATIONS EXIST & PROPOSED		
No	Date	Scale
274	04.2000	1:50
Dwg No		Revision
09		A



REAR ELEVATION EXISTING



REAR ELEVATION PROPOSED

Get No 99
001

ft boundary

W

25°

f50

25°

W

estimated
mid point windows
in blank
Get
No 95.
PP002831

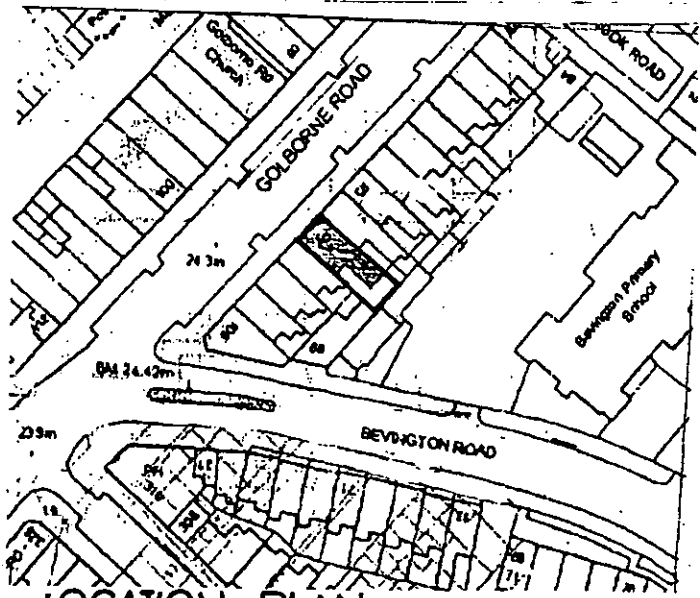
DELEGATED
APPROVAL
24 JAN 2001

PP002831
R.B.K. & C.
TOWN PLANNING
- 8 DEC 2000
RECEIVED

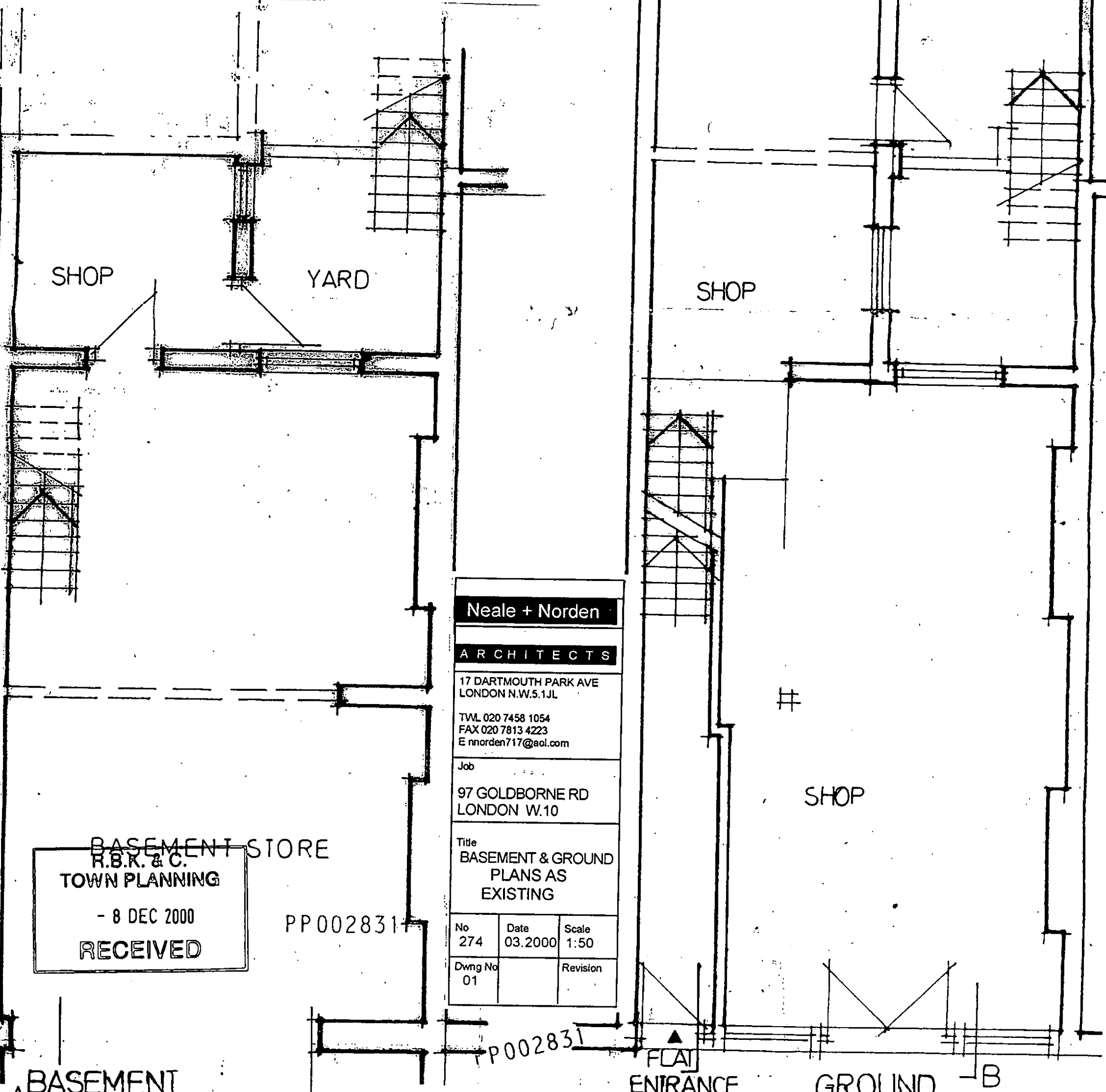
DELEGATED
APPROVAL
24 JAN 2001

PP002831

R.B.K. & C.
TOWN PLANNING
- 8 DEC 2000
RECEIVED



LOCATION PLAN



SHOP

YARD

SHOP

SHOP

Neale + Norden
ARCHITECTS
 17 DARTMOUTH PARK AVE
 LONDON N.W.5.1JL
 TEL 020 7458 1054
 FAX 020 7813 4223
 E nnorden717@aol.com

Job
 97 GOLDBORNE RD
 LONDON W.10

Title
 BASEMENT & GROUND
 PLANS AS
 EXISTING

No 274	Date 03.2000	Scale 1:50
Dwng No 01	Revision	

BASEMENT STORE
 R.B.K. & C.
 TOWN PLANNING
 - 8 DEC 2000
 RECEIVED

PP002831

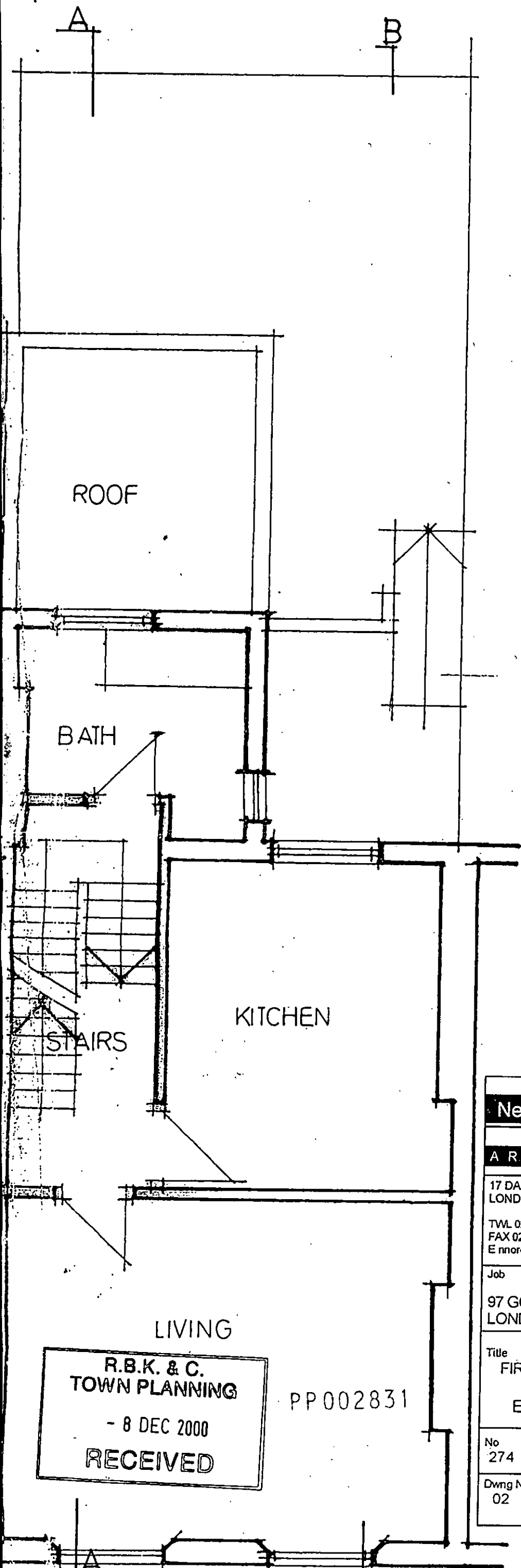
PP002831

BASEMENT

FLAT
 ENTRANCE

GROUND

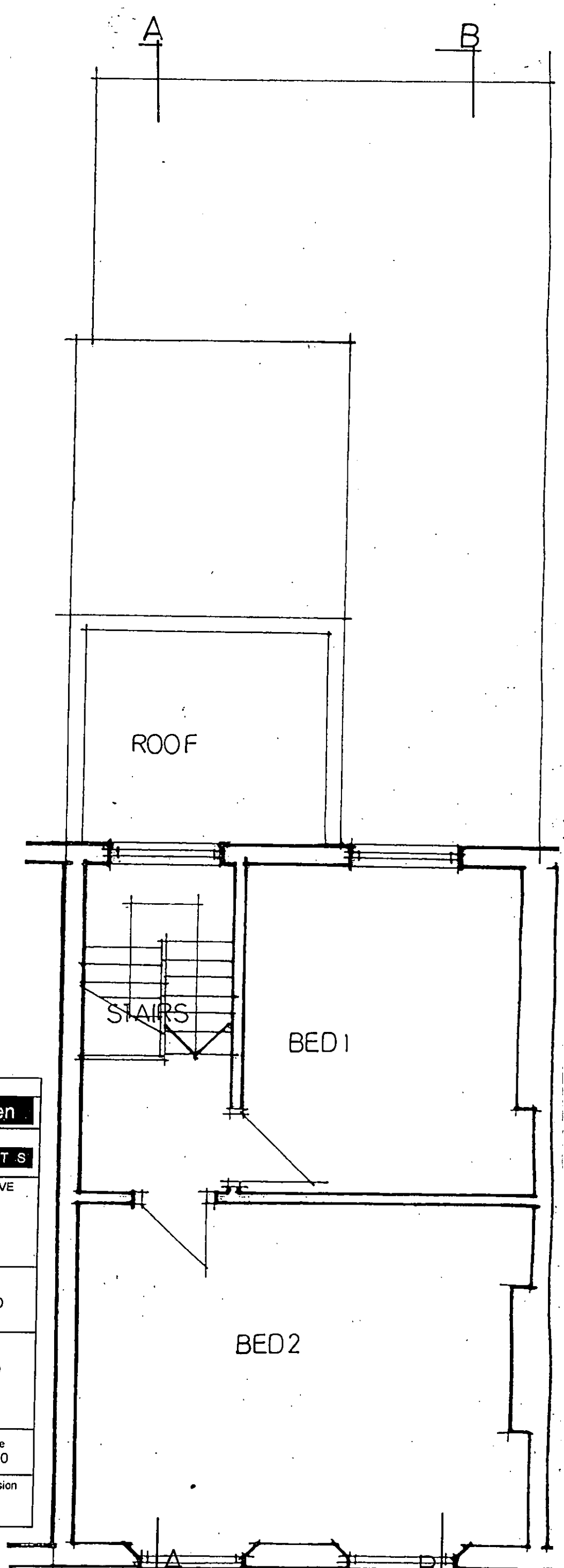
B



R.B.K. & C.
TOWN PLANNING
- 8 DEC 2000
RECEIVED

PP002831

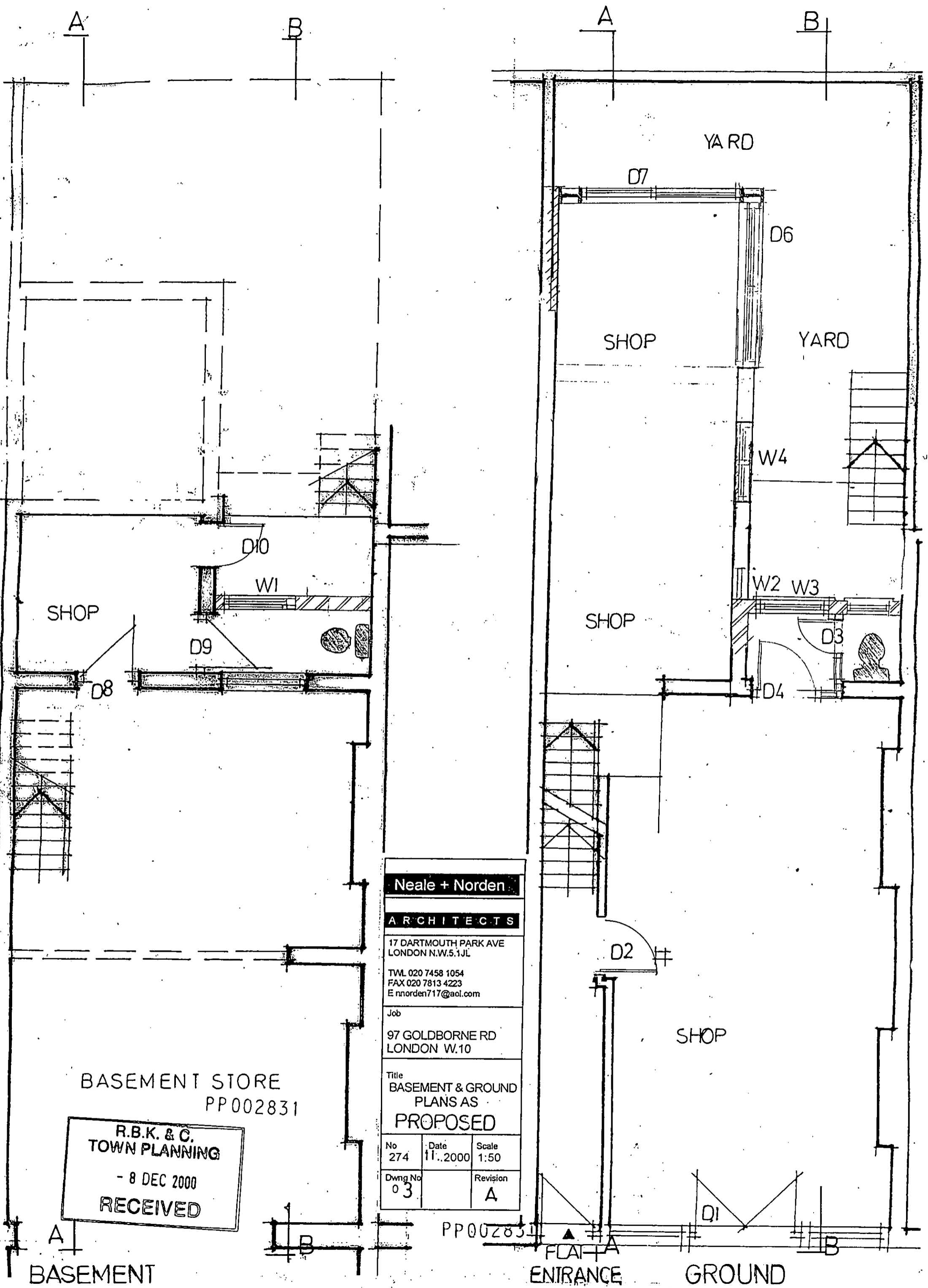
Neale + Norden		
ARCHITECTS		
17 DARTMOUTH PARK AVE LONDON N.W.5.1JL		
T.VL 020 7458 1054 FAX 020 7813 4223 E nmorden717@aol.com		
Job		
97 GOLDBORNE RD LONDON W.10		
Title		
FIRST & SECOND PLANS AS EXISTING		
No	Date	Scale
274	03.2000	1:50
Dwng No	Revision	
02		



FIRST FLOOR PLAN

PP002831

SECOND FLOOR PLAN



Neale + Norden
ARCHITECTS
 17 DARTMOUTH PARK AVE
 LONDON N.W.5.1JL
 TEL 020 7458 1054
 FAX 020 7813 4223
 E nnorden717@aol.com

Job
 97 GOLDBORNE RD
 LONDON W.10

Title
 BASEMENT & GROUND
 PLANS AS
 PROPOSED

No 274	Date 11.2000	Scale 1:50
Dwg No 03	Revision A	

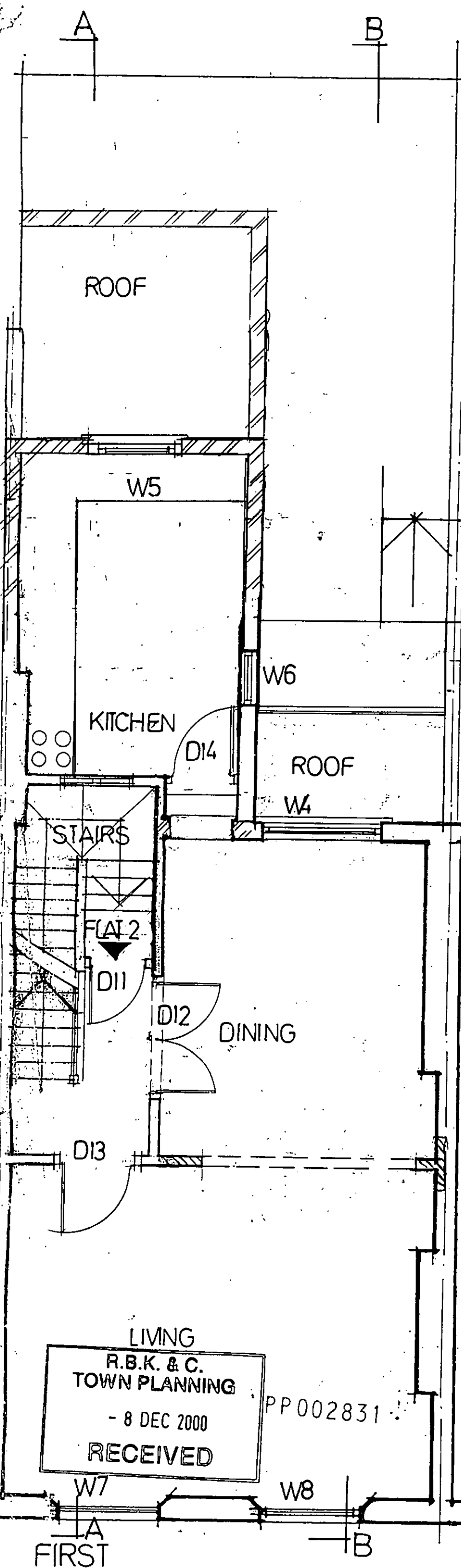
BASEMENT STORE
 PP002831

R.B.K. & C.
TOWN PLANNING
 - 8 DEC 2000
RECEIVED

BASEMENT

ENTRANCE

GROUND



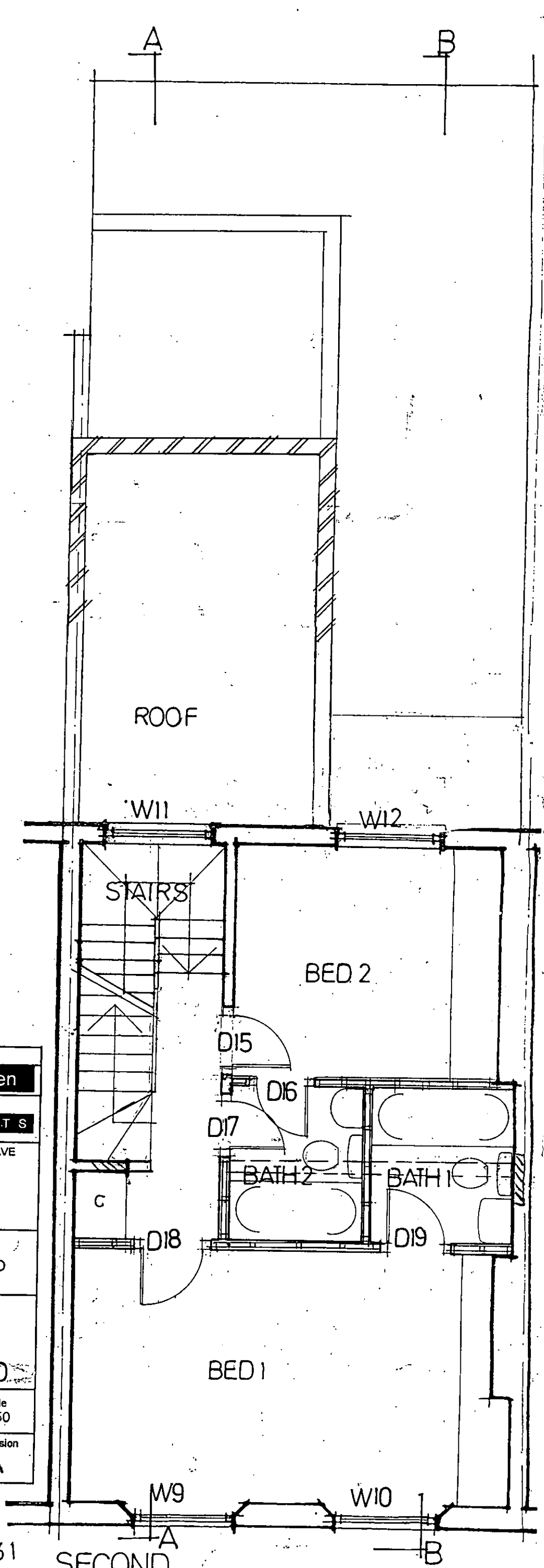
R.B.K. & C.
TOWN PLANNING
 - 8 DEC 2000
RECEIVED

PP002831

FIRST

Neale + Norden		
ARCHITECTS		
17 DARTMOUTH PARK AVE LONDON N.W.5.1JL		
T.W.L. 020 7458 1054 FAX 020 7813 4223 E nnorden717@aol.com		
Job		
97 GOLDBORNE RD LONDON W.10		
Title		
FIRST & SECOND PLANS AS PROPOSED		
No	Date	Scale
274	11.2000	1:50
Dwng No	Revision	
04	A	

PP002831



SECOND

Neale + Norden

ARCHITECTS

17 DARTMOUTH PARK AVE
LONDON N.W.5.1JL

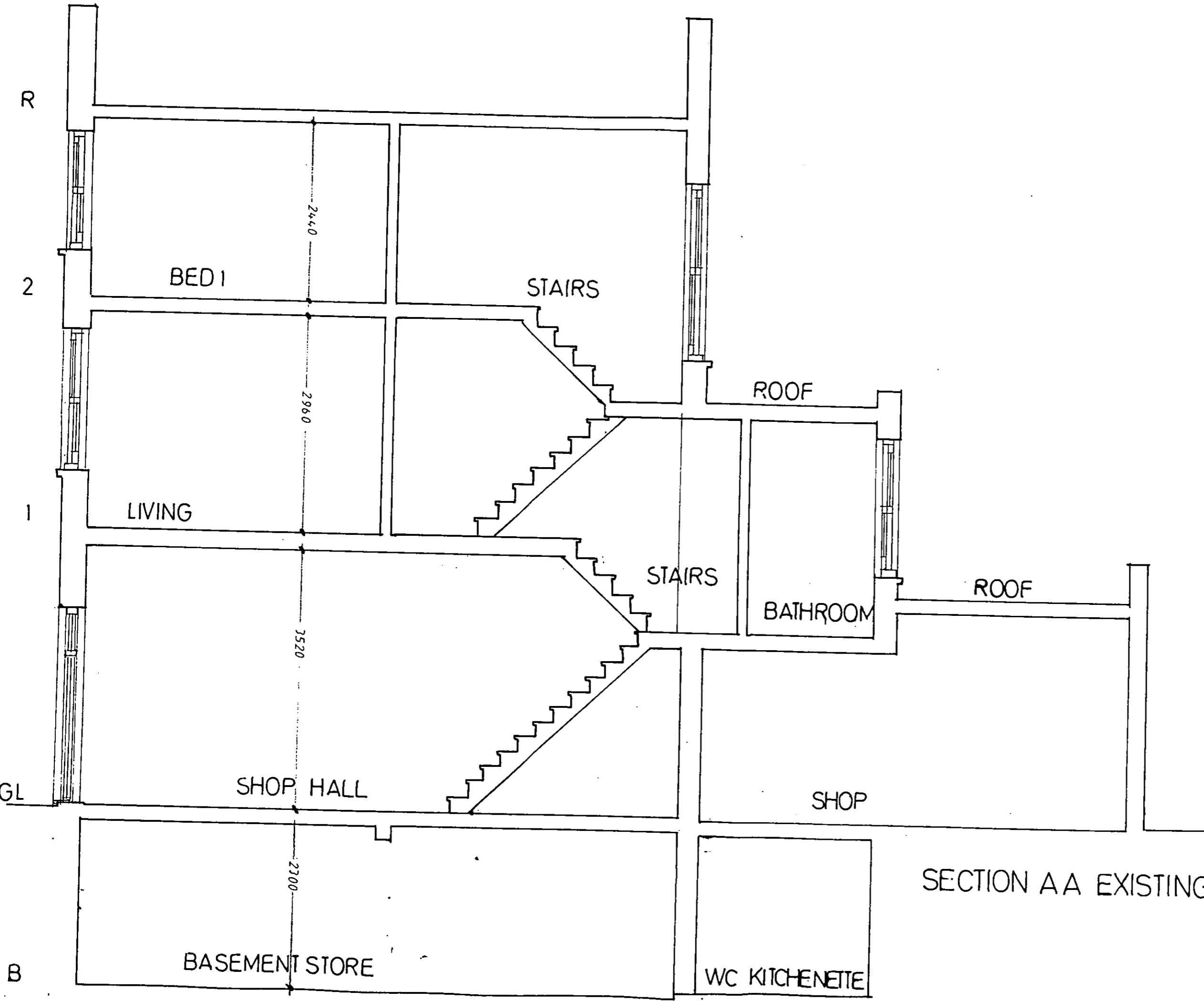
Tel. 020 7458 1054
FAX 020 7813 4223
E nnorden717@aol.com

Job
97 GOLDBORNE RD
LONDON W.10

Title
SECTION AA
EXISTING

No	Date	Scale
274	04.2000	1:50

Dwng No	Revision
05	

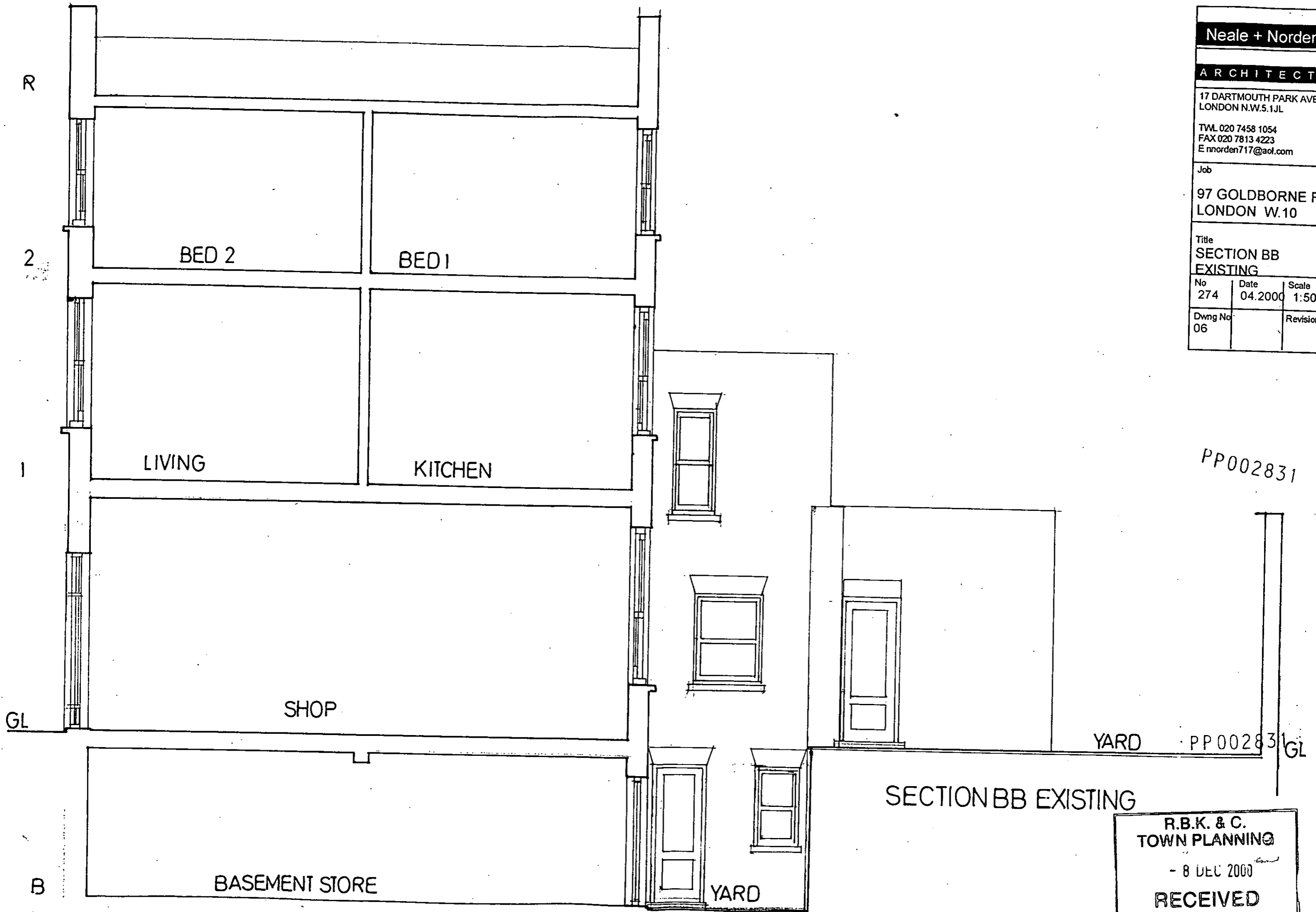


PP002831

PP002831

SECTION AA EXISTING

R.B.K. & C.
TOWN PLANNING
- 8 DEC 2000
RECEIVED



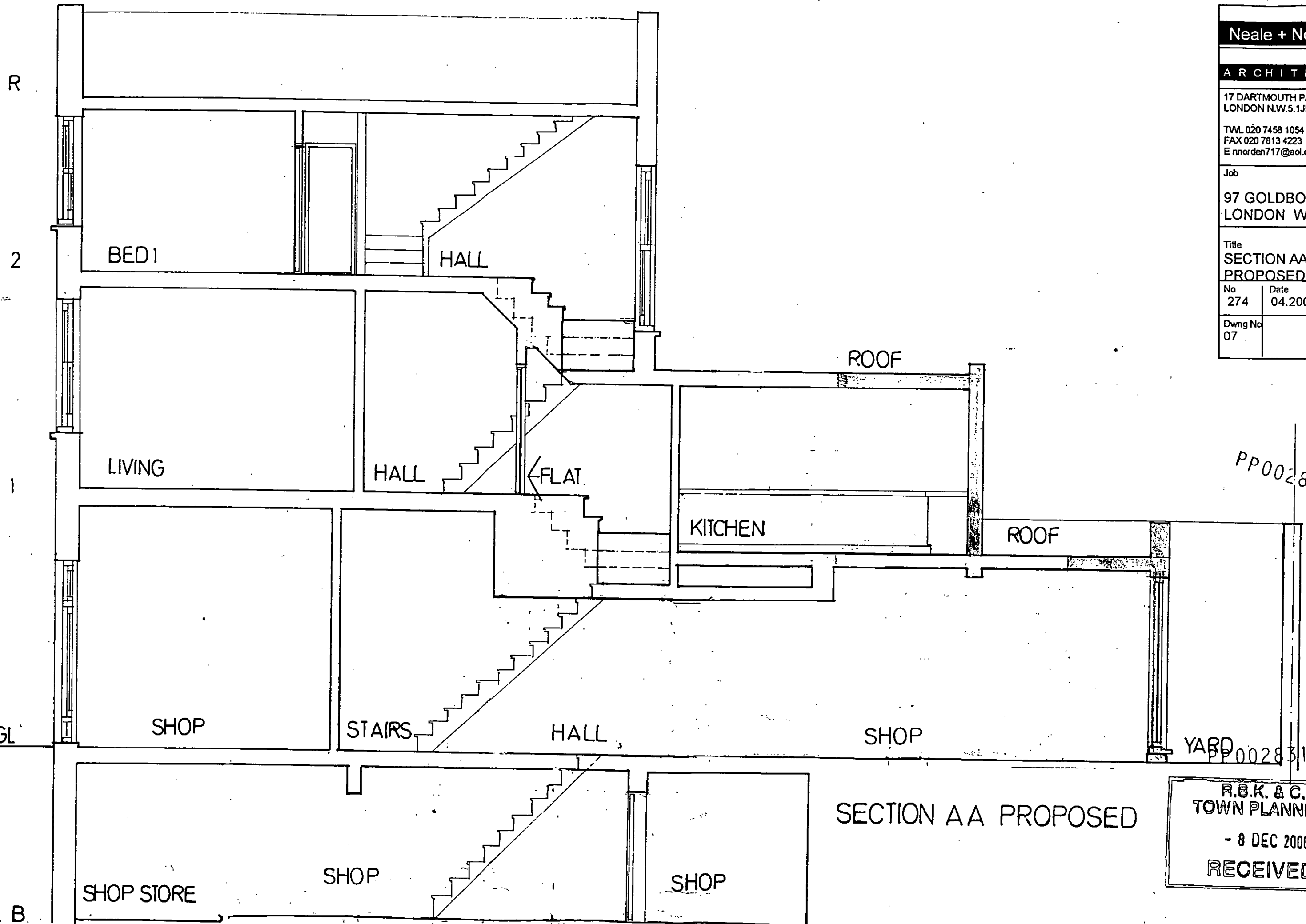
Neale + Norden		
ARCHITECTS		
17 DARTMOUTH PARK AVE LONDON N.W.5.1JL		
T.VL 020 7458 1054 FAX 020 7813 4223 E nnorden717@aol.com		
Job		
97 GOLDBORNE RD LONDON W.10		
Title		
SECTION BB EXISTING		
No	Date	Scale
274	04.2000	1:50
Dwng No		Revision
06		

PP002831

YARD PP002831 GL

SECTION BB EXISTING

R.B.K. & C.
TOWN PLANNING
- 8 DEC 2000
RECEIVED



Neale + Norden

ARCHITECTS

17 DARTMOUTH PARK AVE
LONDON N.W.5.1JL

TWL 020 7458 1054
FAX 020 7813 4223
E nnorden717@aol.com

Job
97 GOLDBORNE RD
LONDON W.10

Title
SECTION AA
PROPOSED

No	Date	Scale
274	04.2000	1:50

Dwng No	Revision
07	A

PP002831

YARD PP002831

SECTION AA PROPOSED

R.B.K. & C.
TOWN PLANNING
- 8 DEC 2000
RECEIVED

Neale + Norden

ARCHITECTS

17 DARTMOUTH PARK AVE
LONDON N.W.5.1JL

Tel. 020 7458 1054
FAX 020 7813 4223
E nnorden717@aol.com

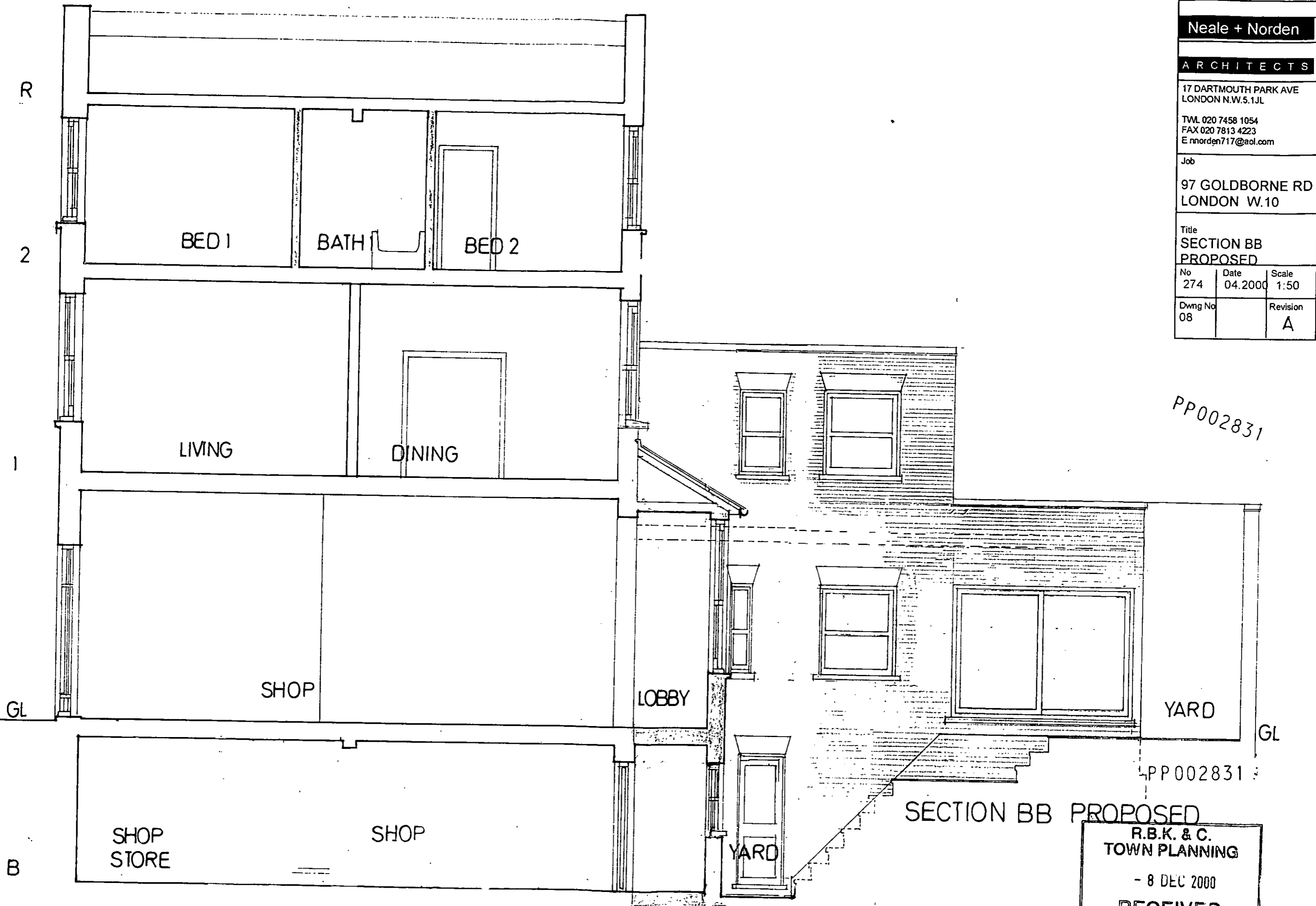
Job

97 GOLDBORNE RD
LONDON W.10

Title
SECTION BB
PROPOSED

No 274	Date 04.2000	Scale 1:50
-----------	-----------------	---------------

Dwng No 08	Revision A
---------------	---------------



PP002831

PP002831

SECTION BB PROPOSED

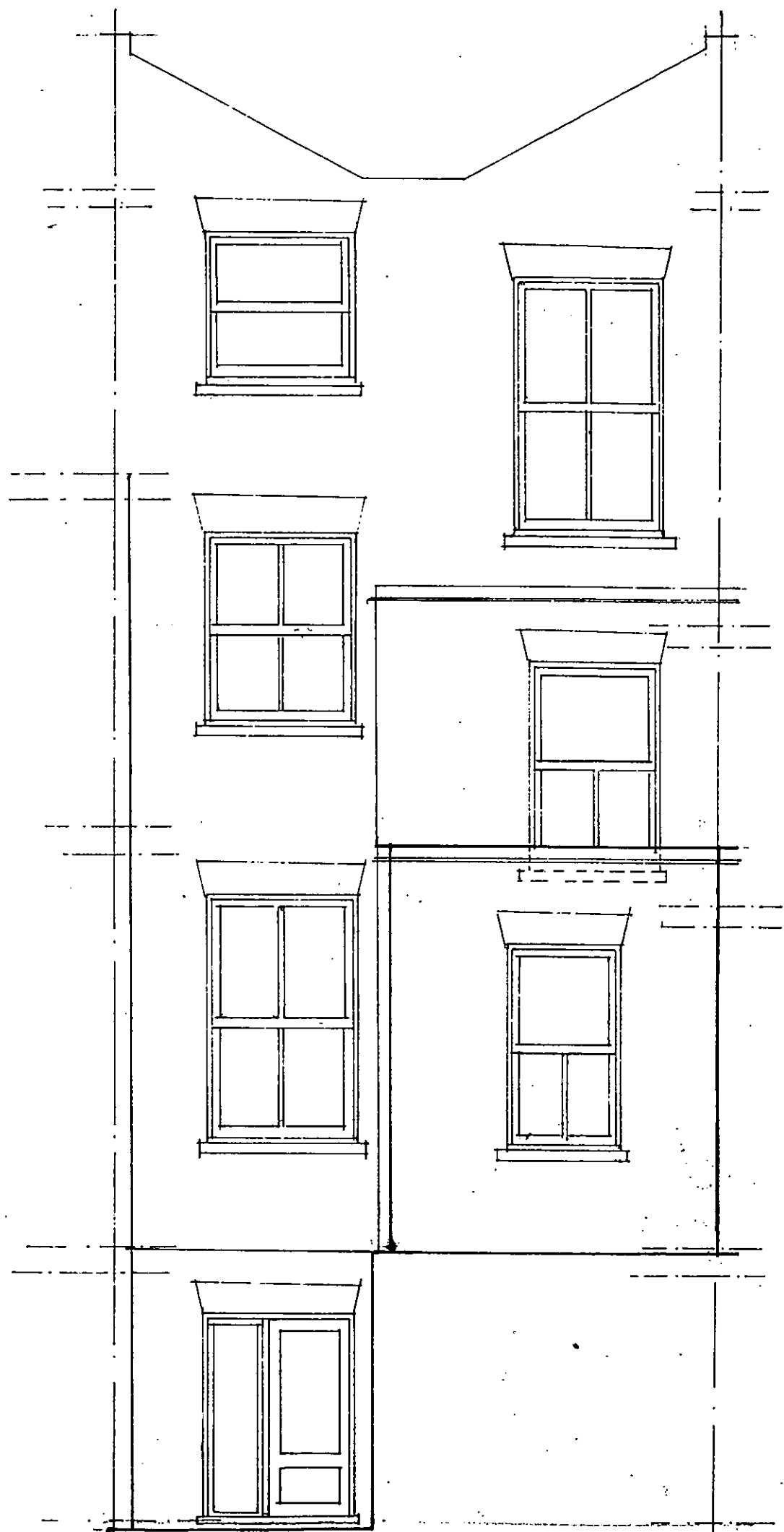
R.B.K. & C.
TOWN PLANNING
- 8 DEC 2000
RECEIVED

Neale + Norden,		
ARCHITECTS		
17 DARTMOUTH PARK AVE LONDON N.W.5.1JL		
T.VL 020 7458 1054 FAX 020 7813 4223 E nnorden717@aol.com		
Job		
97 GOLDBORNE RD LONDON W.10		
Title		
REAR ELEVATIONS EXIST & PROPOSED		
No	Date	Scale
274	04.2000	1:50
Dwng No		Revision
09		A

PP002831

PP002831

R.B.K. & C.
TOWN PLANNING
- 8 DEC 2000
RECEIVED



REAR ELEVATION EXISTING



REAR ELEVATION PROPOSED