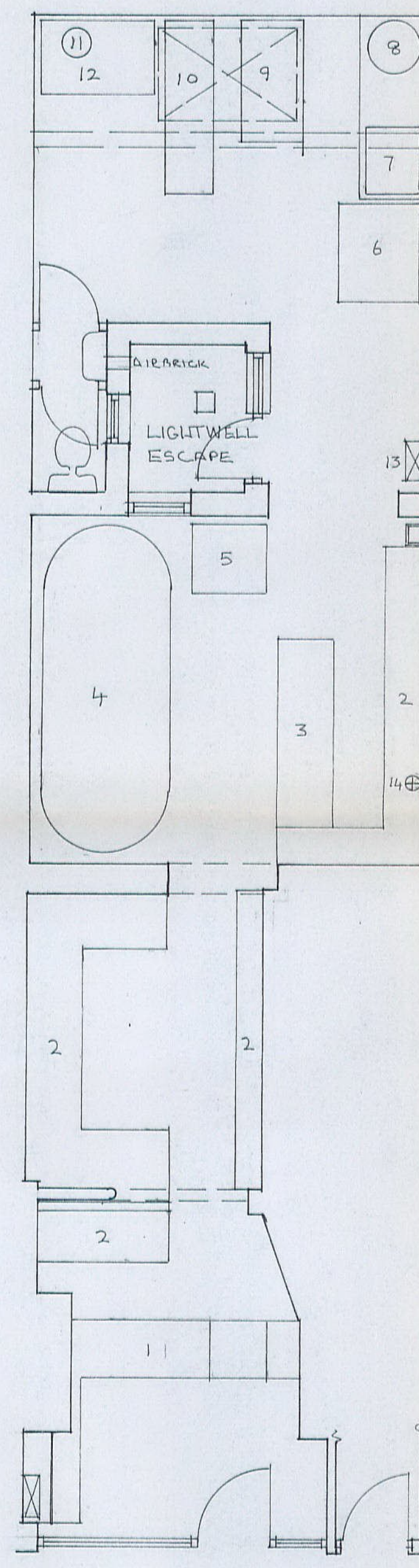
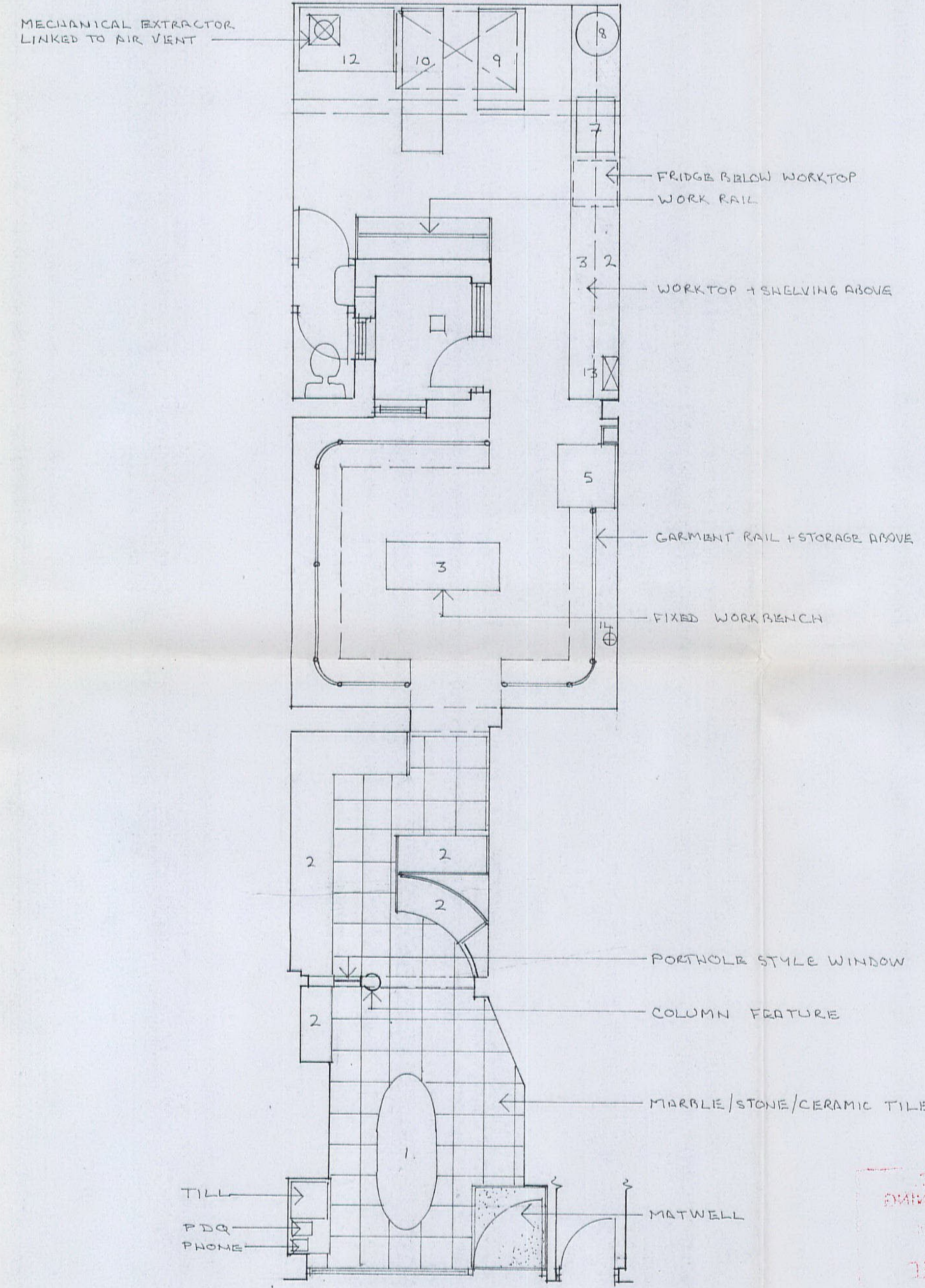


KEY:

- 1 - COUNTER
- 2 - SHELVING
- 3 - WORKTOP
- 4 - ROTUNDA
- 5 - BAGGING MACHINE
- 6 - AIR CON. UNIT
- 7 - SINK/BOWL
- 8 - HW CYLINDER
- 9 - SPOTTING BOARD
- 10 - IRONING BOARD
- 11 - FRESH AIR VENT
- 12 - STEAM BOLT UNIT
- 13 - FUSEBOARDS
- 14 - WATER METER



EXISTING LAYOUT



PROPOSED LAYOUT



EXISTING FRONTAGE



PROPOSED FRONTAGE

FASCIA WT. INCREASED FROM 60 TO 75MM - PROJECTING SIGN CONSTRUCTED AS INTEGRAL PART OF FASCIA PANEL. RIM LIGHTING TROUGH AT BASE

STAINLESS STEEL OR POLISHED CHROME FRAME + 9.4mm SAFETY GLASSING

EXG. DOOR TO BE ANTI-CORRODED GLASS PAINT TO MATCH FASCIA

6x 50x25mm TENSILED WOOD BATTENS ATTACHED TO FASCIA WITH NON-FERROUS SCREWS

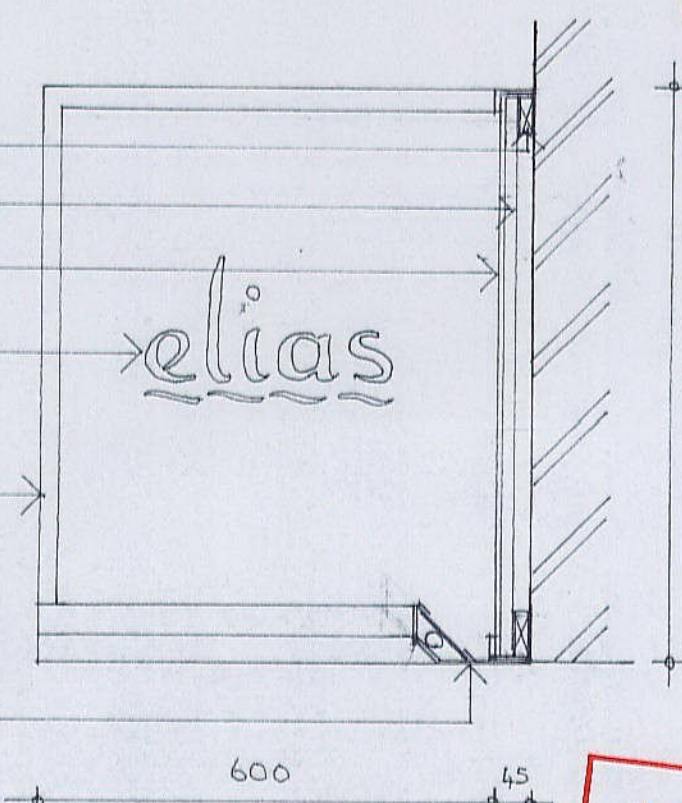
WATER RESISTANT 19mm PLY FASCIA PANEL

POLISHED COATED STAINLESS STEEL FASCIA PANEL COLLAR & PANTONE 355C

POLISHED CHROME FINISH LOGO AFFIXED TO FASCIA IN 25mm LOCATORS

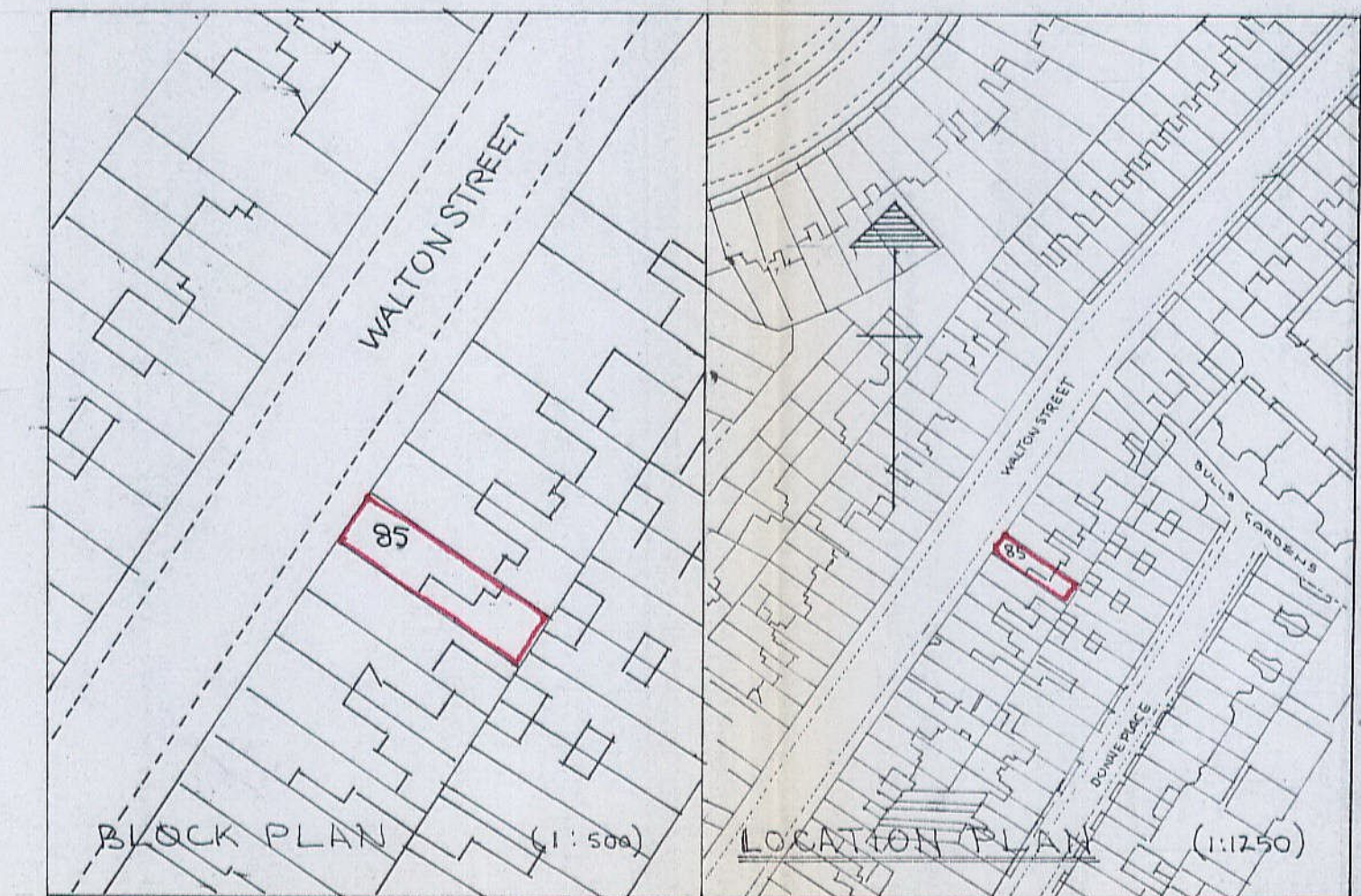
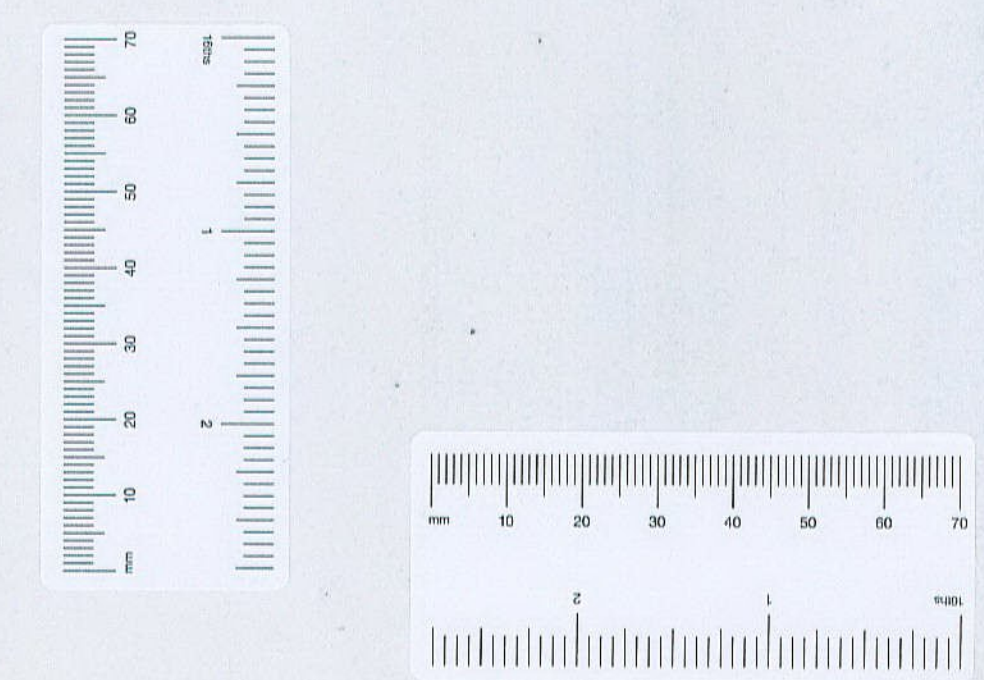
U & L SECT. POLISHED STAINLESS STEEL TRIM ATTACHED TO STAINLESS STEEL SCREWS TOGETHER WITH POLYURETHANE

POLISHED STAINLESS STEEL PURPOSE MADE LIGHTING TROUGH TOGETHER WITH REAR GLASS PANEL. NOTE: DRAIN HOLES TO BE FORMED WITH TROUGH (RIB) DETAILS TO BE AGREED WITH SIGN MANUFACTURER



DETAIL OF PROJECTING SIGN SHOWING SECTION THROUGH FASCIA PANEL (SCALE 1:10)

R.B.K. & C.  
TOWN PLANNING  
- 1 DEC 2000  
RECEIVED



Design MCA INTERIORS  
30 Ennismore Ave  
London W4 1SF  
Tel/Fax  
020 8995 3389

Project ELIAS LTD  
85 WALTON ST SW3 2HP

Detail PROPOSED NEW SHOP-FRONT & INTERIOR REFURBISHMENT

Scale 1:50 1:10

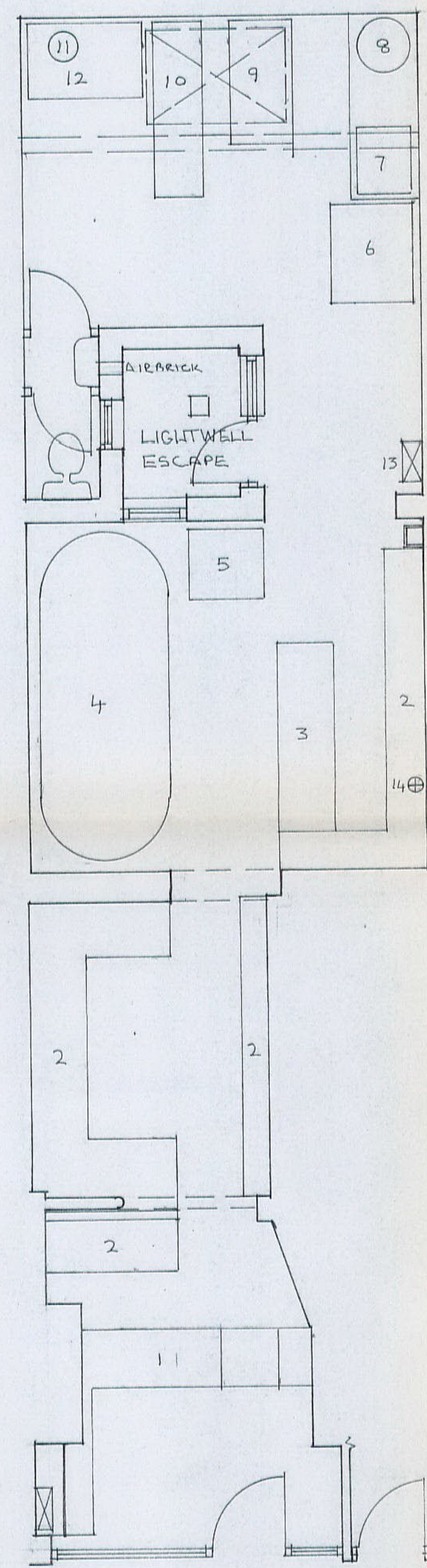
Drwg no 249/01 (14/11/00)

Ammds A: 20/11/00

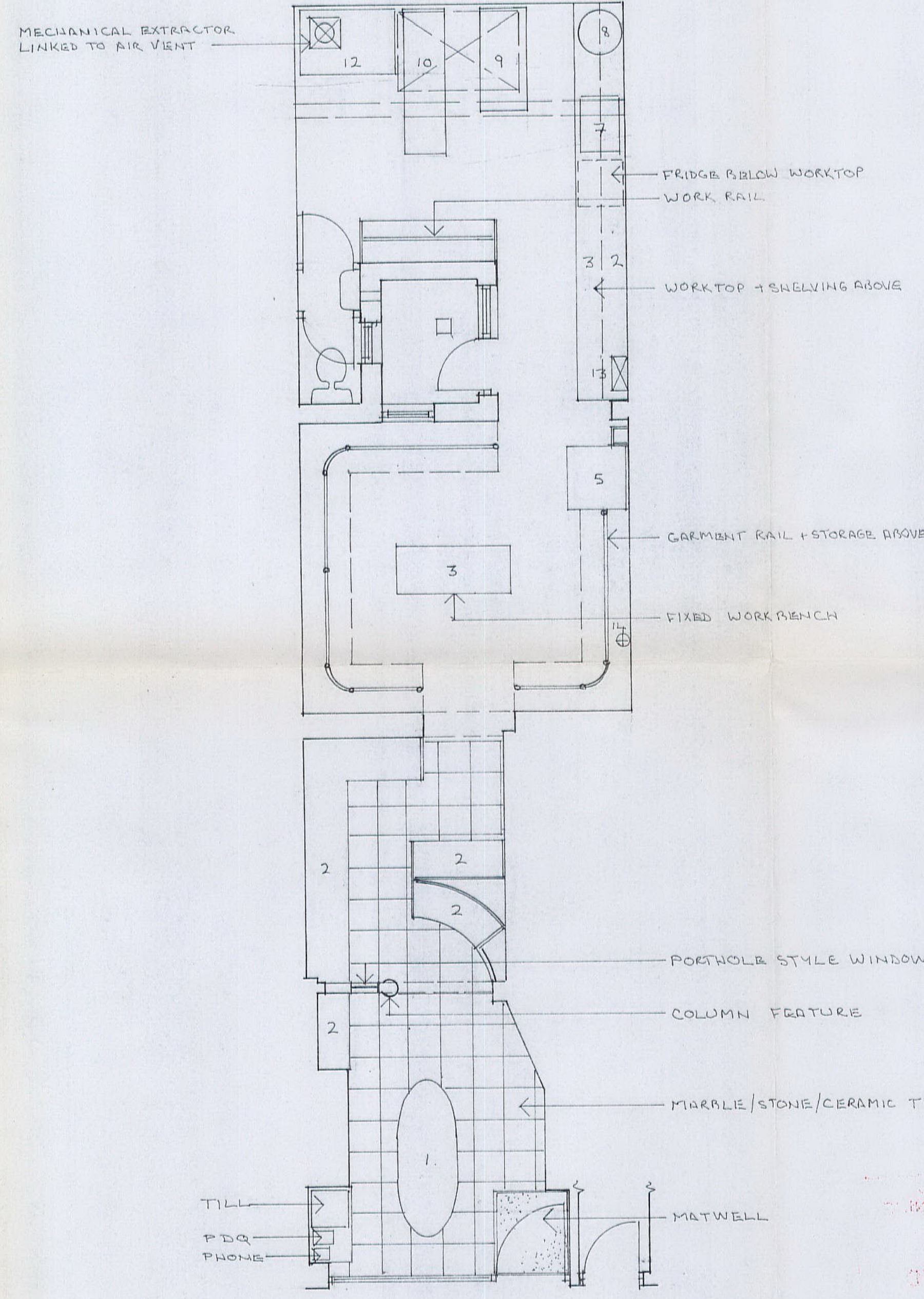
Note: do not scale, contractors to work to own site dimensions, except where indicated

**KEY:**

- 1 - COUNTER
- 2 - SHELVING
- 3 - WORKTOP
- 4 - ROTULDA
- 5 - BAGGING MACHINE
- 6 - AIR CON. UNIT
- 7 - SINK/PANL
- 8 - HW CYLINDER
- 9 - SPOTTING BOARD
- 10 - IRONING BOARD
- 11 - FRESH AIR VENT
- 12 - STEAM FOLT UNIT
- 13 - FUSEBOARD
- 14 - WATER METER



EXISTING LAYOUT



PROPOSED LAYOUT



EXISTING FRONTAGE



PROPOSED FRONTAGE

FASCIA HT. INCREASED FROM 610 TO 750MM. PROTECTING SIGN CONSTRUCTED AS INTEGRAL PART OF FASCIA PANEL. RIM LIGHTING TROUGH AT BASE.

STAINLESS STEEL OR POLISHED CHROME FRAME + 9mm TYPICAL GLAZING.

EXG. DOOR TO BE REDECORATED GLOSS PAINT TO MATCH FASCIA.

EX 50x25mm TANELED WOOD BATTENS AFFIXED TO FASCIA WITH NON-FERROUS SCREWS.

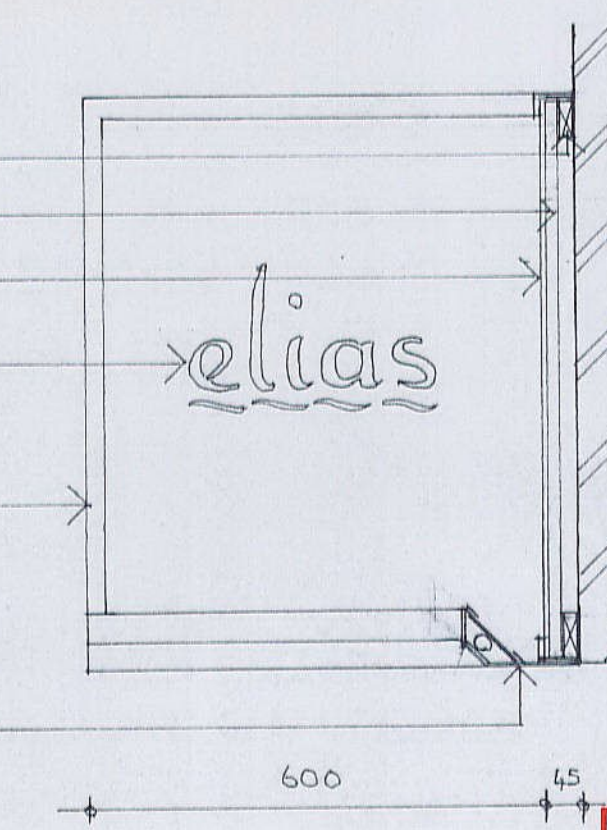
WATER RESISTANT 19mm PLY FASCIA PANEL.

POWDER COATED STAINLESS STEEL FASCIA PANEL COL. REF: PANTONE 353C.

POLISHED CHROME FINISH LOGO AFFIXED TO FASCIA VIA 25MM LOCATORS.

U & L SECT POLISHED STAINLESS STEEL TRIM AFFIXED VIA STAINLESS STEEL SCREWS TOGETHER WITH POLYMER SEALANT.

POLISHED STAINLESS STEEL PURPOSE MADE LIGHTING TROUGH TOGETHER WITH BRASS GLASS PANEL. NOTES: DRAIN HOLES TO BE FORMED WITHIN TROUGH (BWD) DETAILS TO BE AGREED WITH SIGN MANUFACTURER.



DETAIL OF PROJECTING SIGN SHOWING SECT THRU FASCIA PANEL (SCALE 1:10)

PP002773

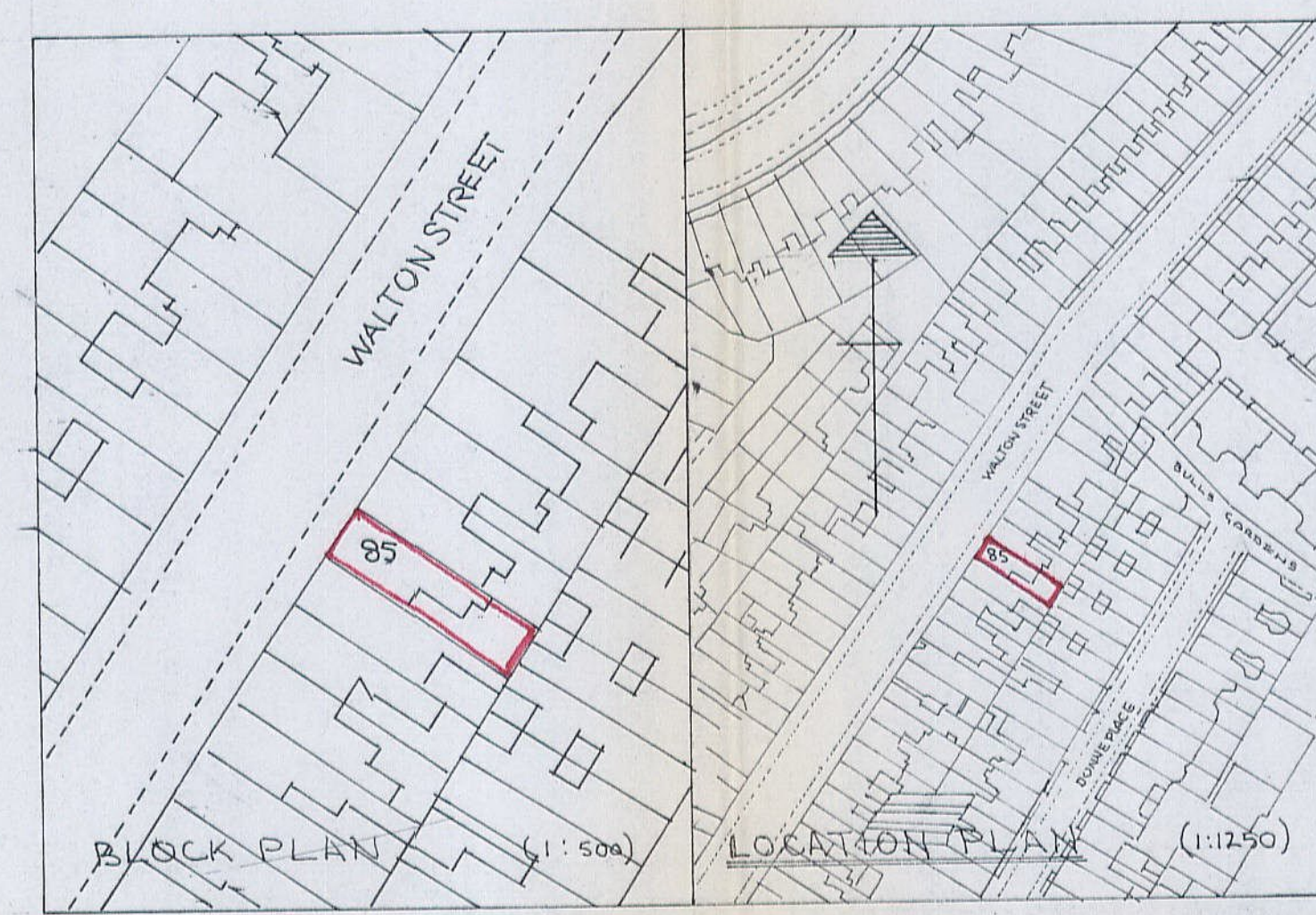
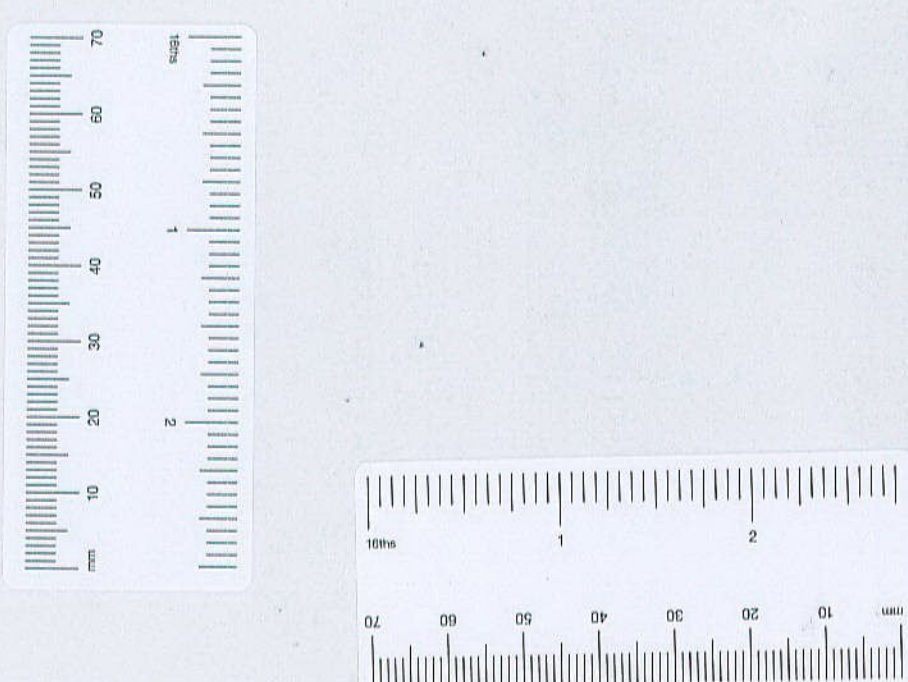
750

600

45

DELEGATED APPROVAL  
- 8 JAN 2001

R.B.K. & C.  
TOWN PLANNING  
- 1 DEC 2000  
RECEIVED



Design MCA INTERIORS  
30 Ennismore Ave  
London W4 1SF  
Tel/Fax  
020 8995 3389

Project ELIAS LTD  
85 WALTON ST SW3 2HP

Detail PROPOSED NEW SHOP FRONT & INTERIOR REFURBISHMENT

Scale 1:50 1:10

Drwg no 249/01 (14/11/00)

Ammds A: 30/11/00

Note: do not scale, contractors to work to own site dimensions, except where indicated