

# APPROVED DRAWINGS

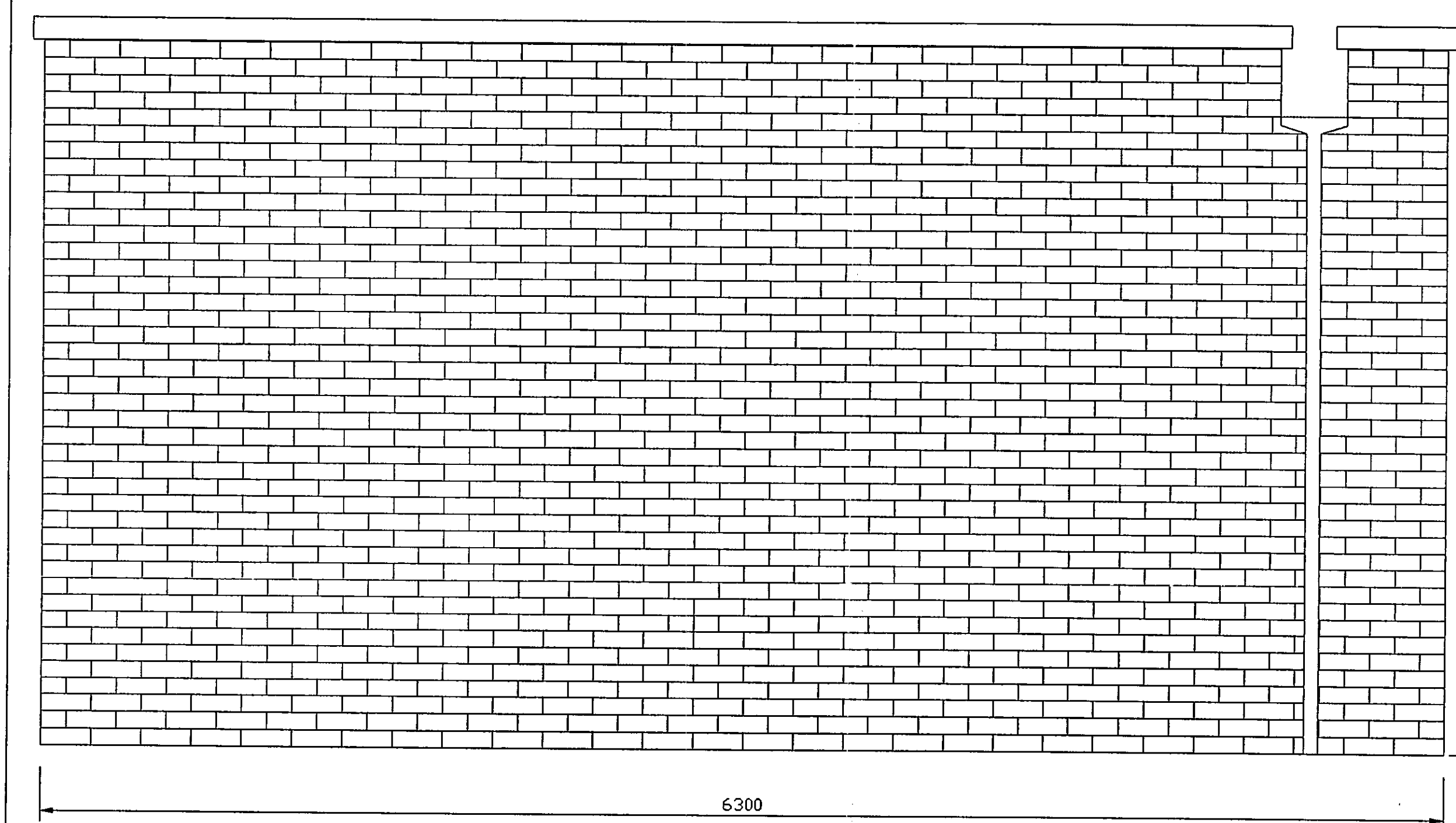
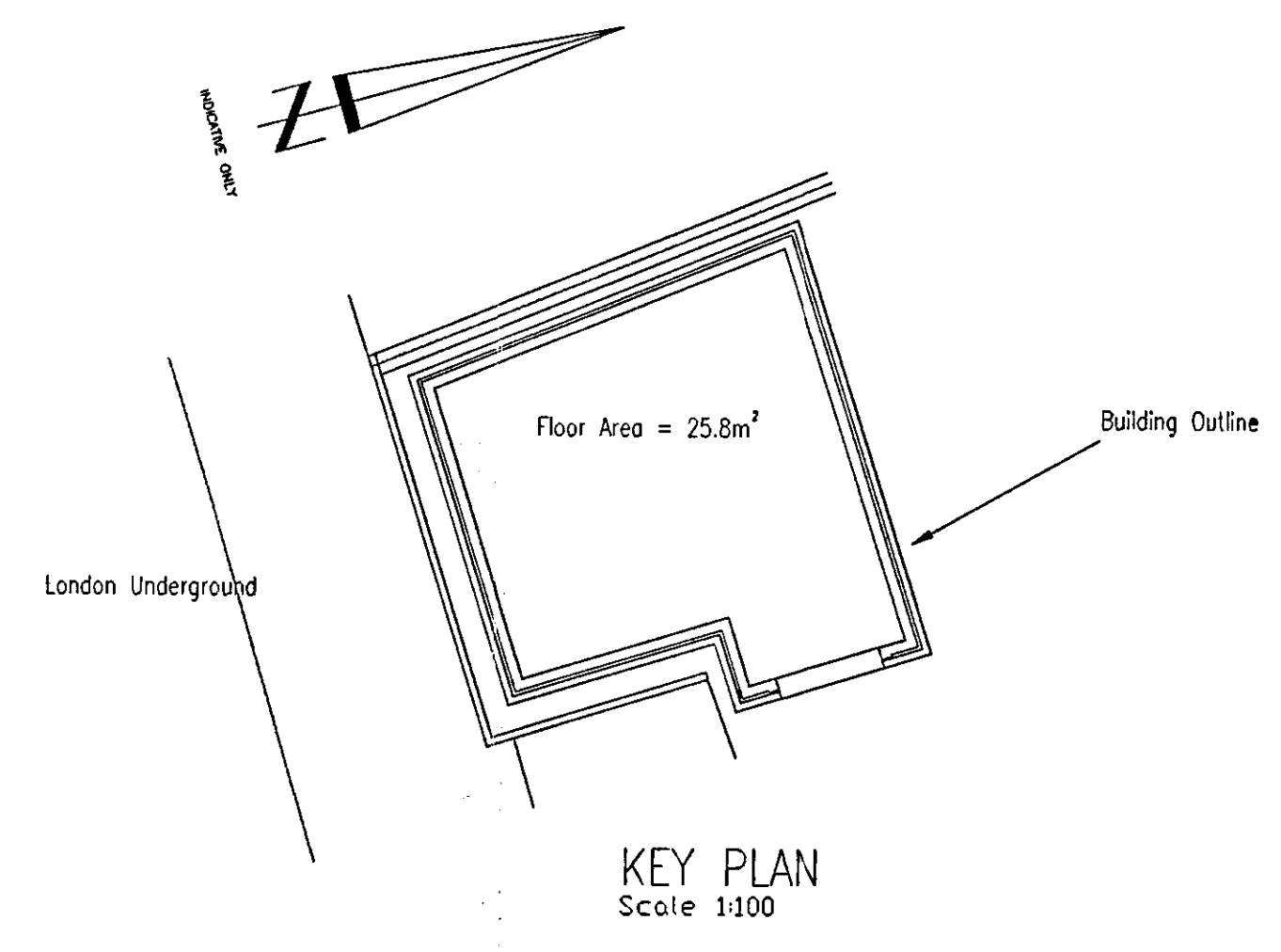
Please Index As

File Number

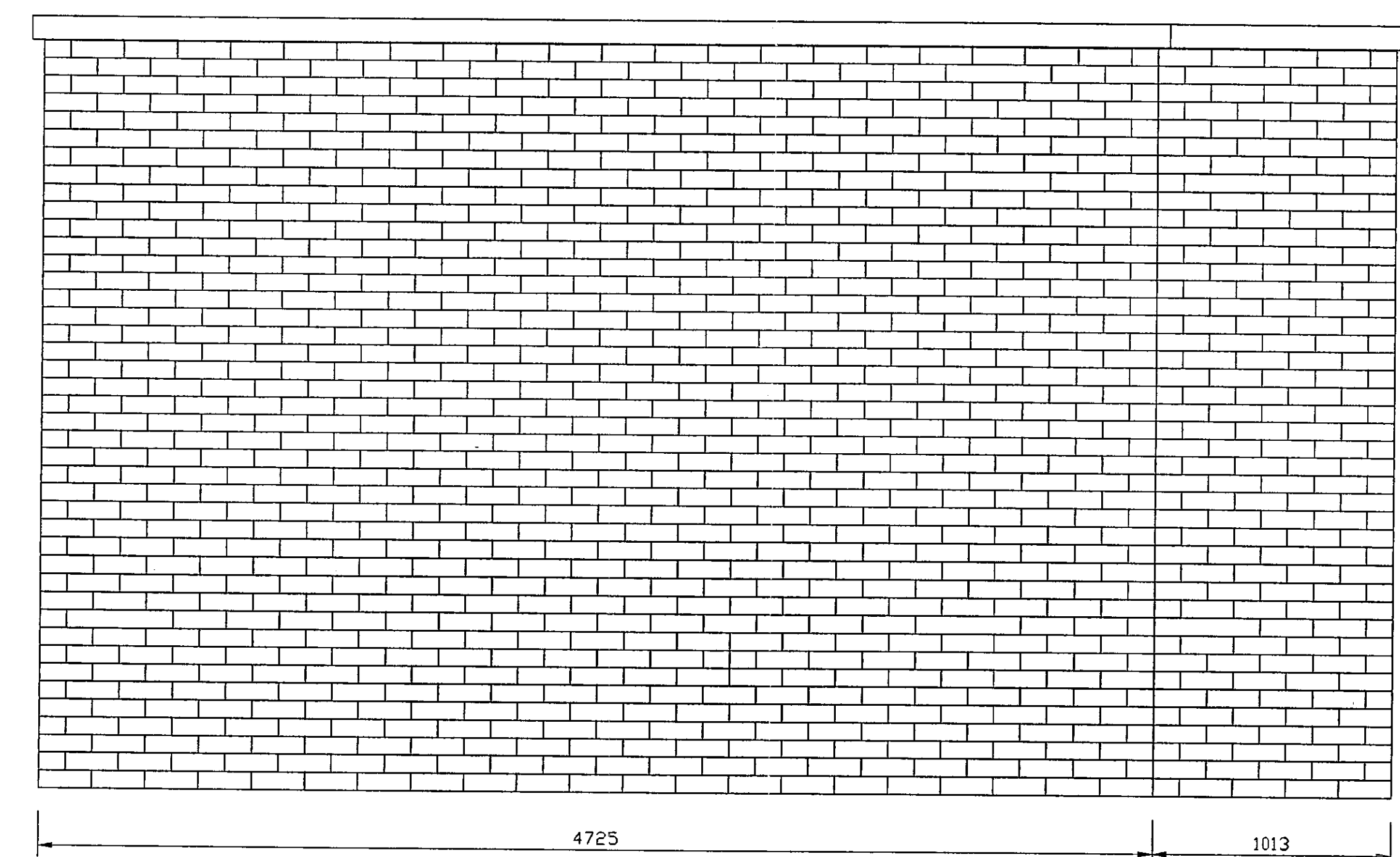
## APPROVED DRAWINGS

Part	1	Part	11
Part	2	Part	12
Part	3	Part	13
Part	4	Part	14
Part	5	Part	15
Part	6	Part	16
Part	7	Part	17
Part	8	Part	18
Part	9	Part	19
Part	10	Part	20

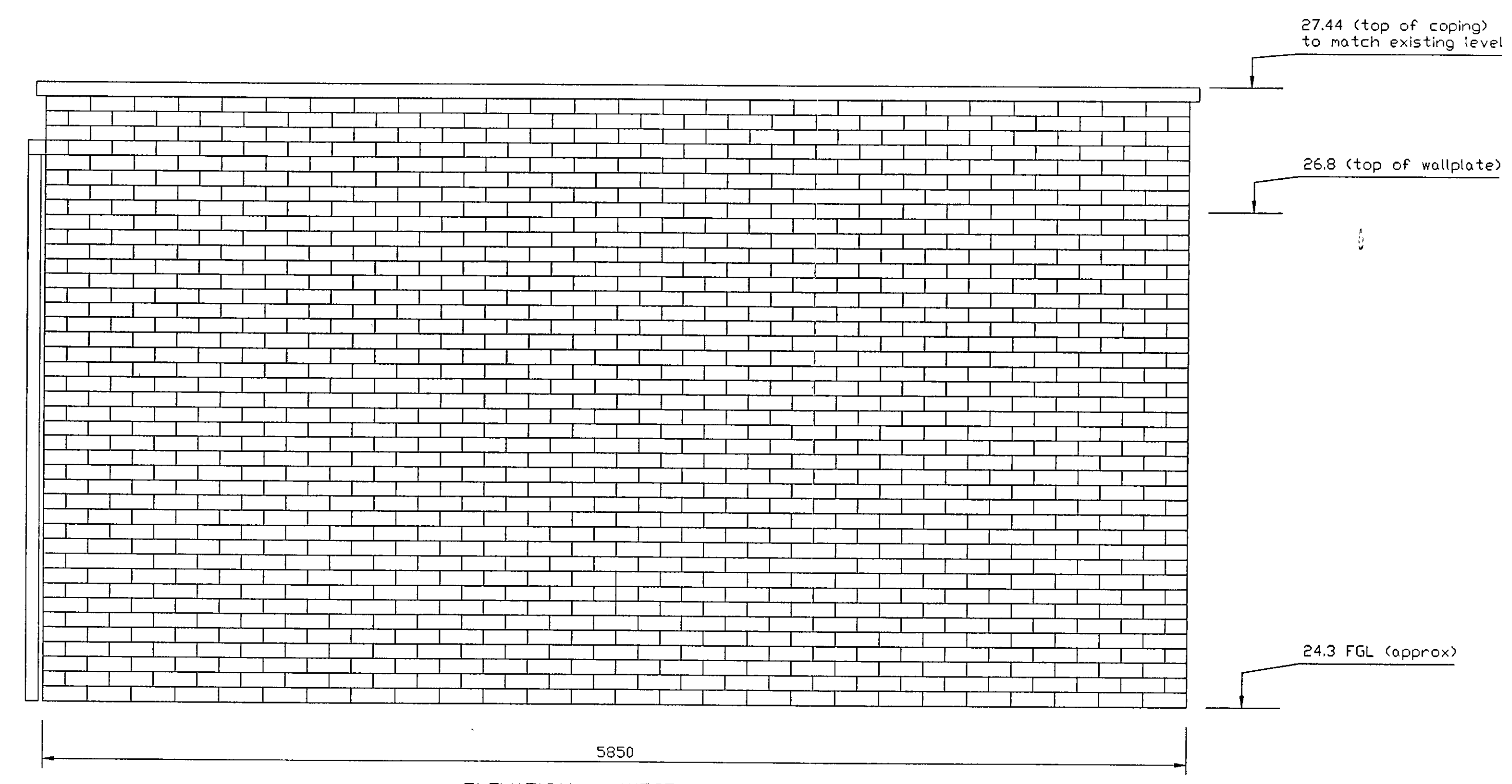
- Notes
1. This drawing is copyright and should not be reproduced without approval
  2. No dimensions to be scaled
  3. Dimensions are in mm unless otherwise noted
  4. This drawing is to be read in conjunction with drawing No. 24185/400/OB/2401
  5. All levels are in metres and relate to Ordnance Datum (Newlyn)
  6. External masonry shall be Staffordshire Blue Engineering brickwork Class B to match existing
  7. Roof construction shall be timber joist and plywood flat roof (cold deck) with 3 layer waterproofing membrane and granite chippings
  8. All drainage equipment shall be Hegworth Black
  9. Pair of doors from Henderson-Bostwick Defender range with BRITON emergency hardware and external lock



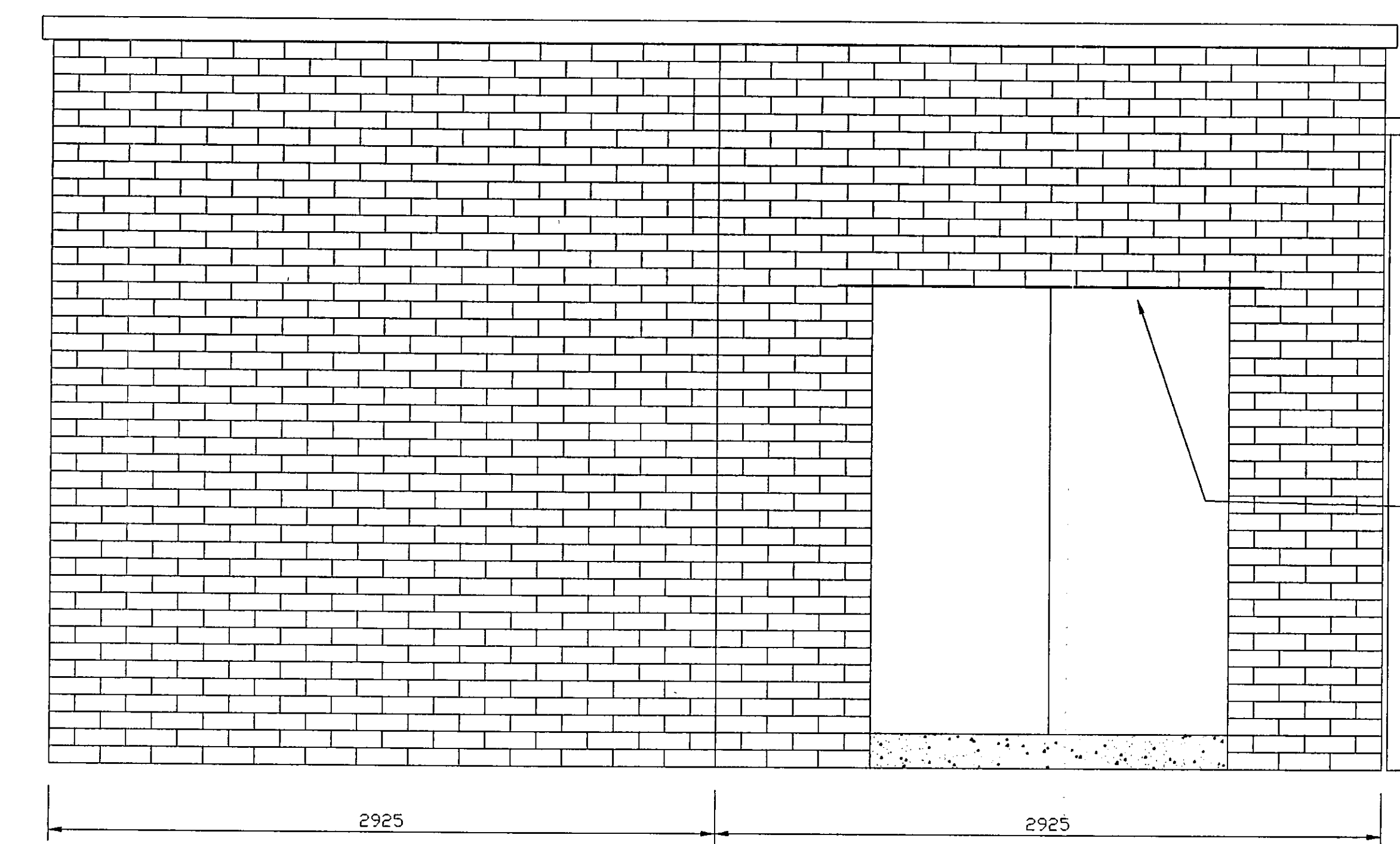
ELEVATION - NORTH WALL



ELEVATION - SOUTH WALL



ELEVATION - WEST WALL

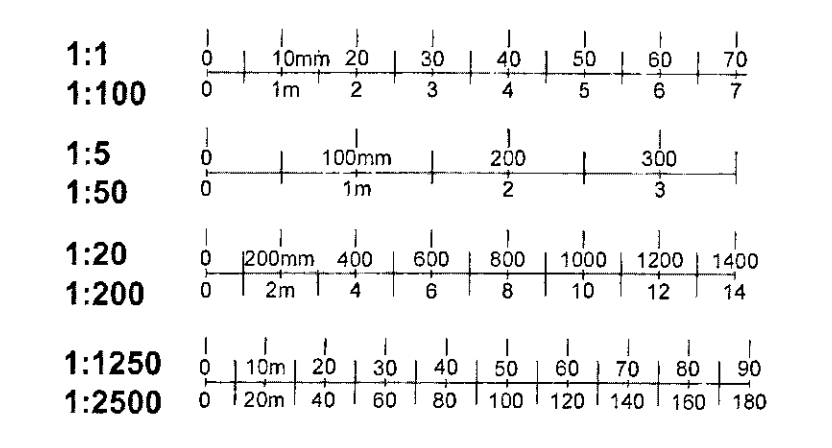


ELEVATION - EAST WALL

RECEIVED  
TOWN PLANNING  
15 MAR 2000  
RECEIVED

PP000666

①



Version	A	First Issue - RBKC Planning Department	Originated by E. Gibson 28/12/00	Checked by and date	Approved by and date
Client	Royal Borough of Kensington and Chelsea				
Project	Replacement of Acklam Road footbridge				
Drawing Title	KCCT Storage Building Elevations				
Purpose	Planning Approval	Draft	Scale	1:20	
Issuing Office	LONDON, Euston	Drawing Number	24185/400/OB/2402		
Telephone	020-7383-5393	Version	A		

