

**ROYAL BOROUGH
OF
KENSINGTON & CHELSEA**

DOCUMENT SEPARATOR

DOCUMENT TYPE:

APPROVED DRAWINGS



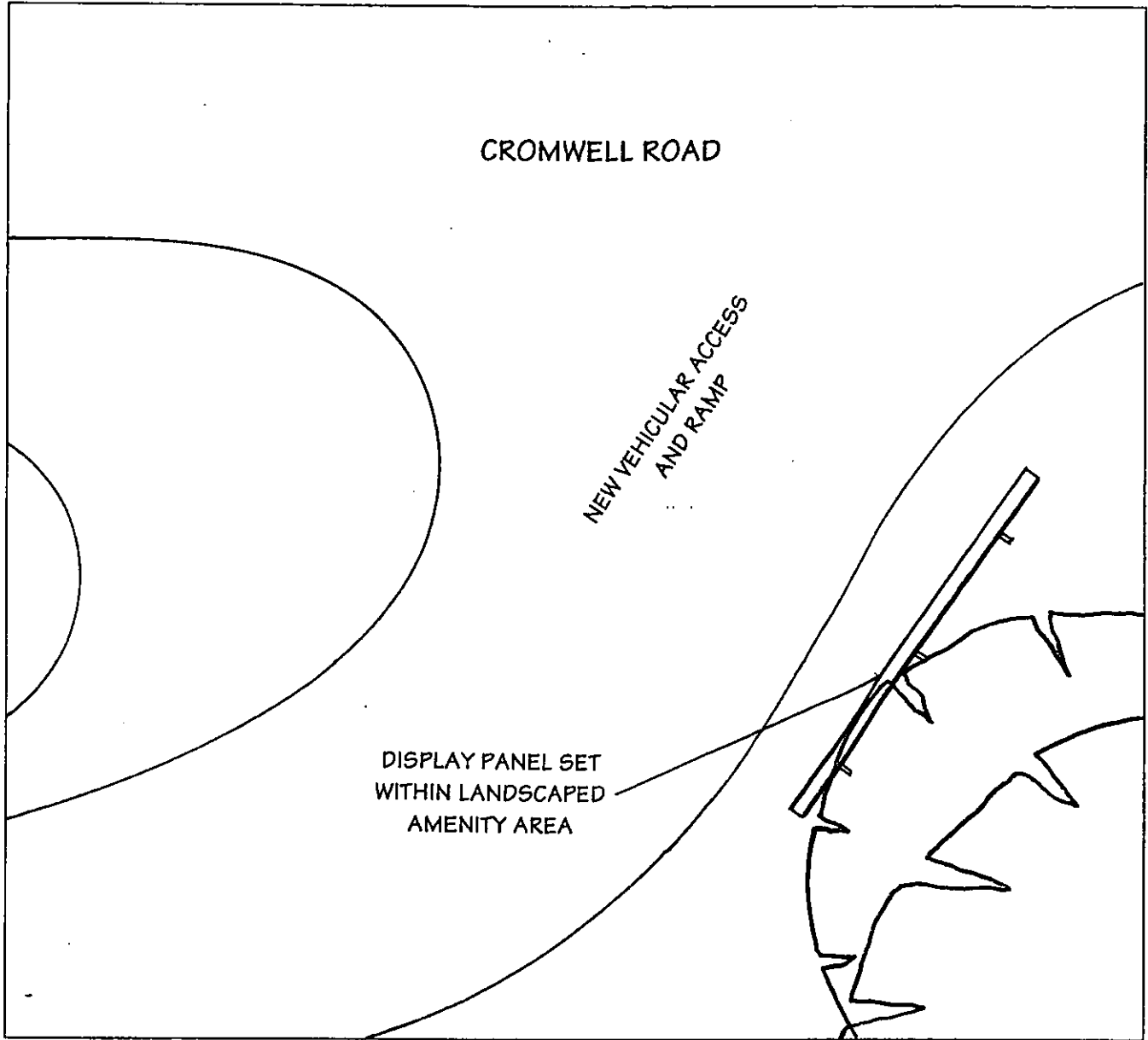
ADR

JCDecaux

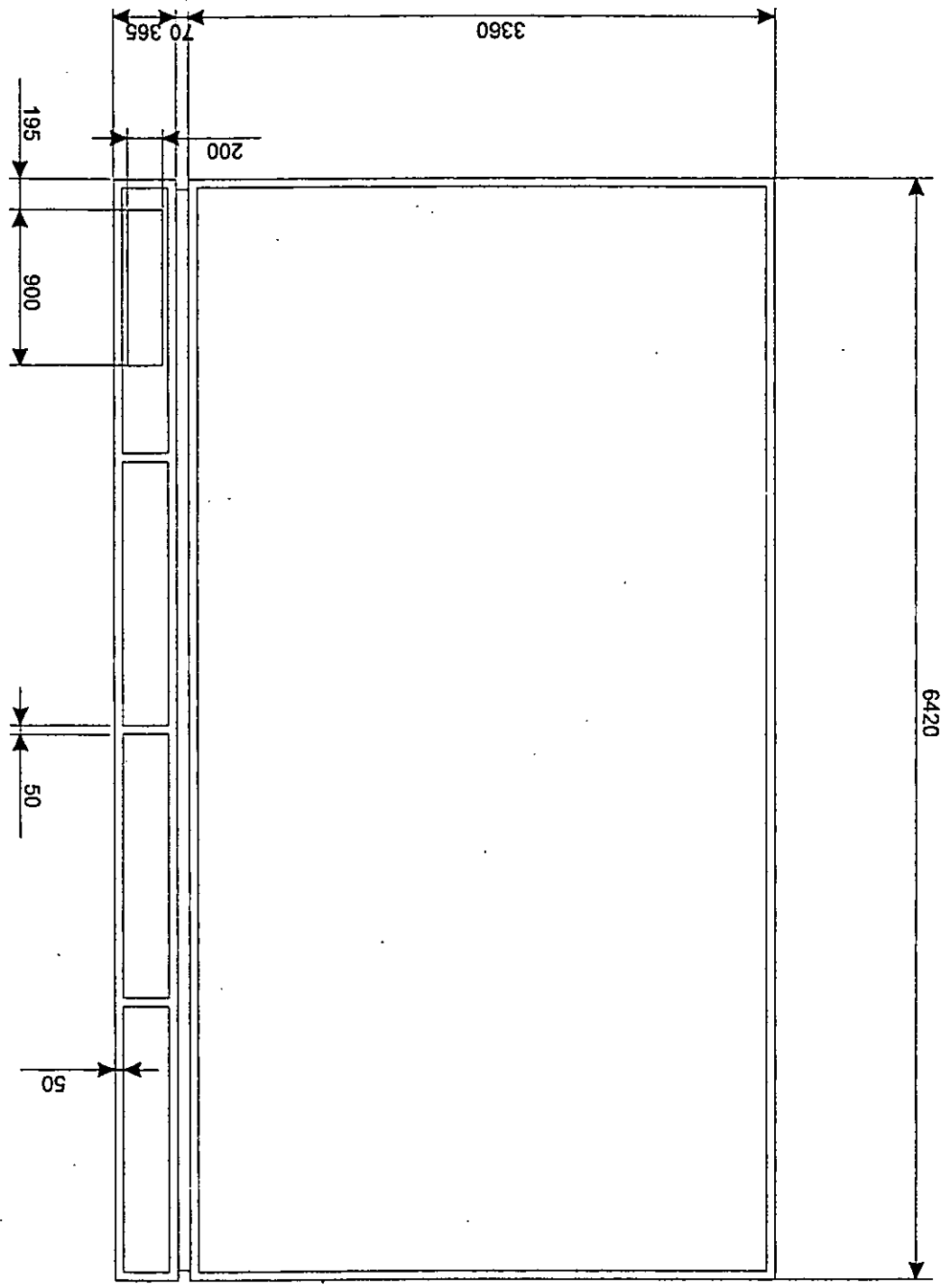
EX DIR	HDC	TP	CAC	AD	CLU	AO AK
RB KJC	21 JAN 2002			PLANNING		
N	C	SW	SE	APP	IO	REC
				ARB	FPLN	DES FEES



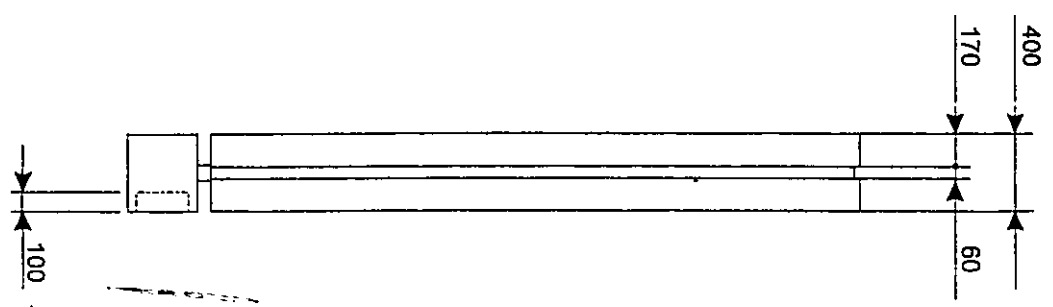
Swallow International Hotel
 Cromwell Road
 London SW5



**Swallow International Hotel
Cromwell Road
Kensington**



SINGLE SIDED WILMOTTE SCROLLING 6 X 3 MUPI



REVISAO
CA/02/149/A