

**ROYAL BOROUGH
OF
KENSINGTON & CHELSEA**

DOCUMENT SEPARATOR

DOCUMENT TYPE:

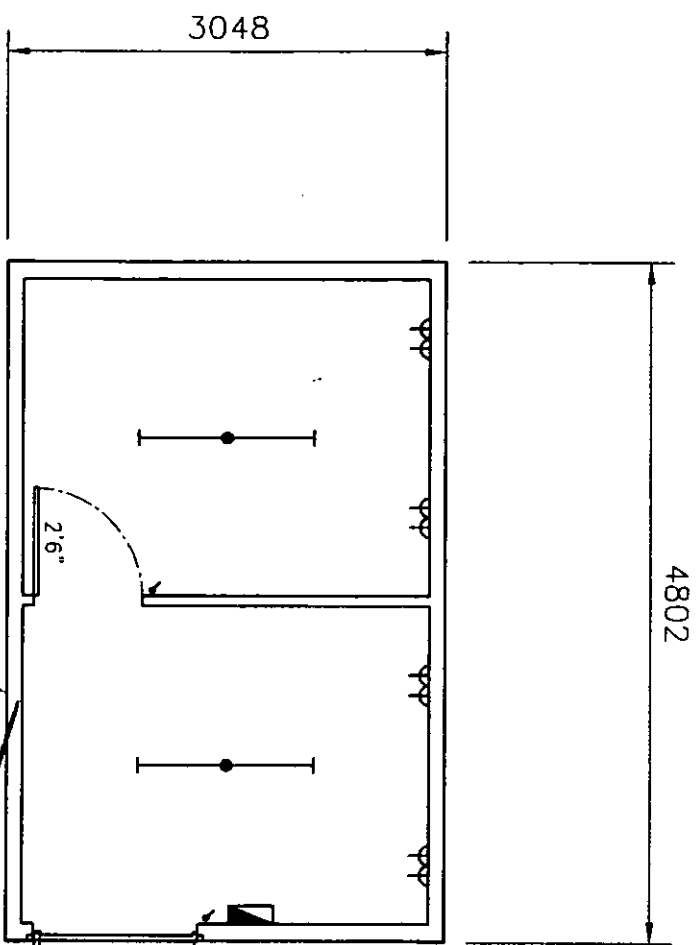
APPROVED DRAWINGS



ADR

CUSTOMER. SURE START STORAGE CONTAINER
SUTTON ESTATE.

PP020693



LINED WITH 6mm PLY
MONO WHITE CEILING PANELS
'POLYFLOX' FLOORING
WOODSTAIN TRIM.

DELEGATED APPROVAL
14 MAY 2002

PERSONNEL DOOR
TIGHT TO CORNER
PILLAR.

1200mm WIDE
90° PERSONNEL
DOOR c/w TWIN
LOCK BOXES.

KEY TO SYMBOLS

	Consumer Unit
	Twin Sckt., 300mm above F.F.F.
	4' Fluorescent Light
	Light Switch

EX DIR | HDC | TP | CAC | AD | CLU | AO | AK

R.B. | K.C. | 20 MAR 2002 | PLANNING

N | C | SW | SE | :PP | IO | REC

ARB | FPLNDES | KEES

APPROVAL BOX

Customer:
Signature:
Name:
Date:

ISSUE	DATE	DESCRIPTION
1	28/02/02	FIRST ISSUE

This document is the property of LYDNEY CONTAINERS Ltd and should not be used or copied without express permission from:-
LYDNEY CONTAINERS Limited, Harbour Road,
Lymington, Dorset, DT15 4EJ

TITLE 16'x10' Split Office
8' high - flat roof
- no windows

LYDNEY CONTAINERS
01594 842 378

DRAWN	SUB	DATE	28/02/02
APPROVED		DATE	
CHECKED		DATE	

DRG. No. SSS_OP1610V01

FSL

1954 JUN 10
ABBOTT
DETROIT MI