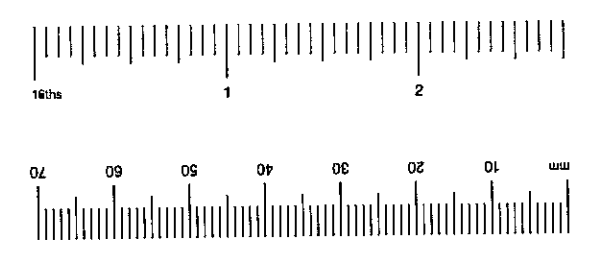
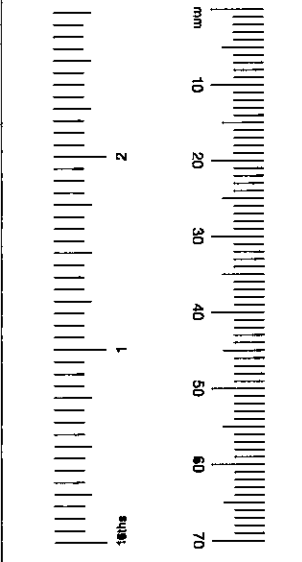
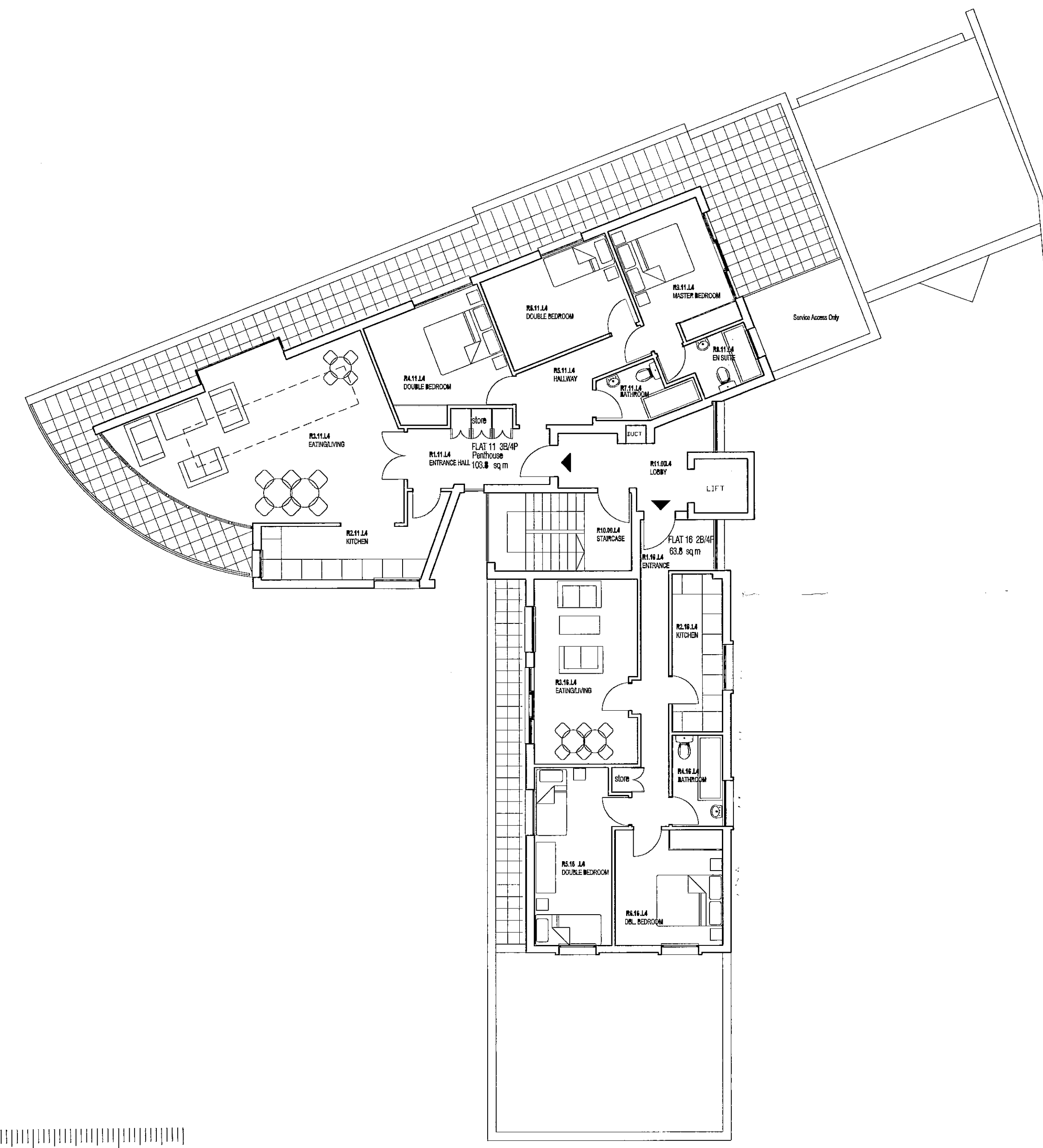


pp/02/0901/a

DATE	19 JUN 2002	PLANNING
BY	K.C.	K.C.
FOR	ARCHITECTS	ARCHITECTS

rev	dated	note
A	11-07-02	AMENDMENTS LINK BLOCK



**7 SWANSCOMBE ROAD
LONDON W11**

A RESIDENTIAL DEVELOPMENT FOR NOTTING HILL HOME OWNERSHIP

drawing
FOURTH FLOOR PLAN

scale / size
1/100 (@A2)

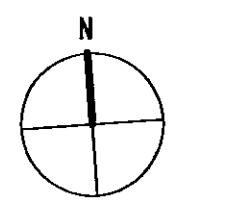
date
19th APRIL 2002

drawing no / revision
0112-GA06 / A

status
PLANNING APPLICATION ISSUE

REFERENCE FILES

pp/02/0901/a



avant architects

1 Torriono Mews
London NW5 2RZ
t 020 7284 1616
f 020 7284 1555

aa@avantarchitects.co.uk