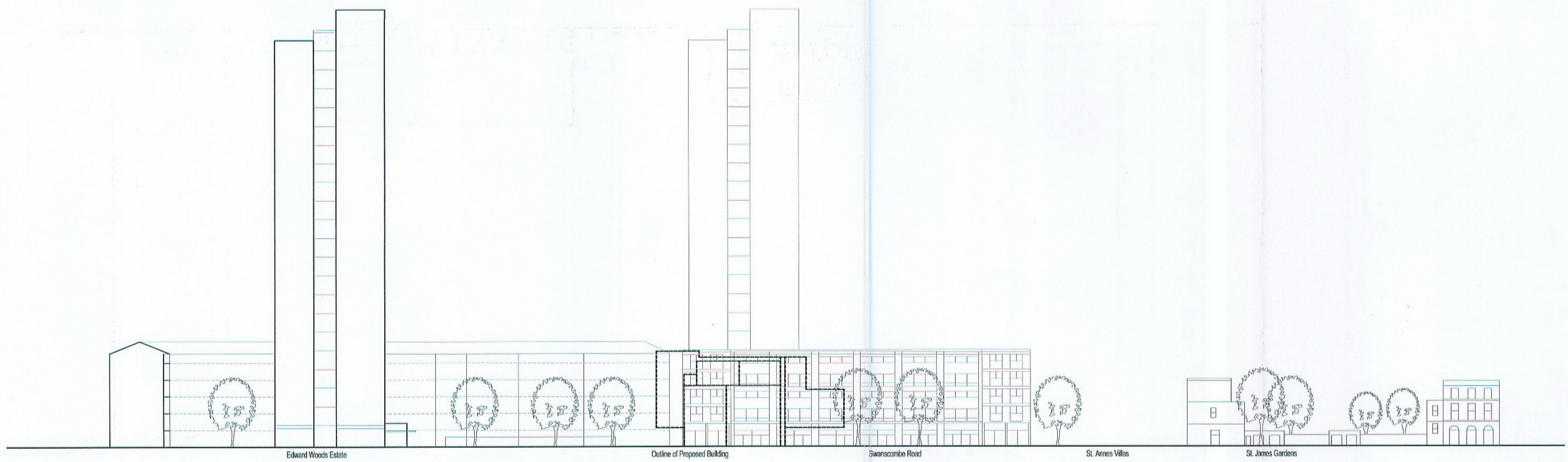
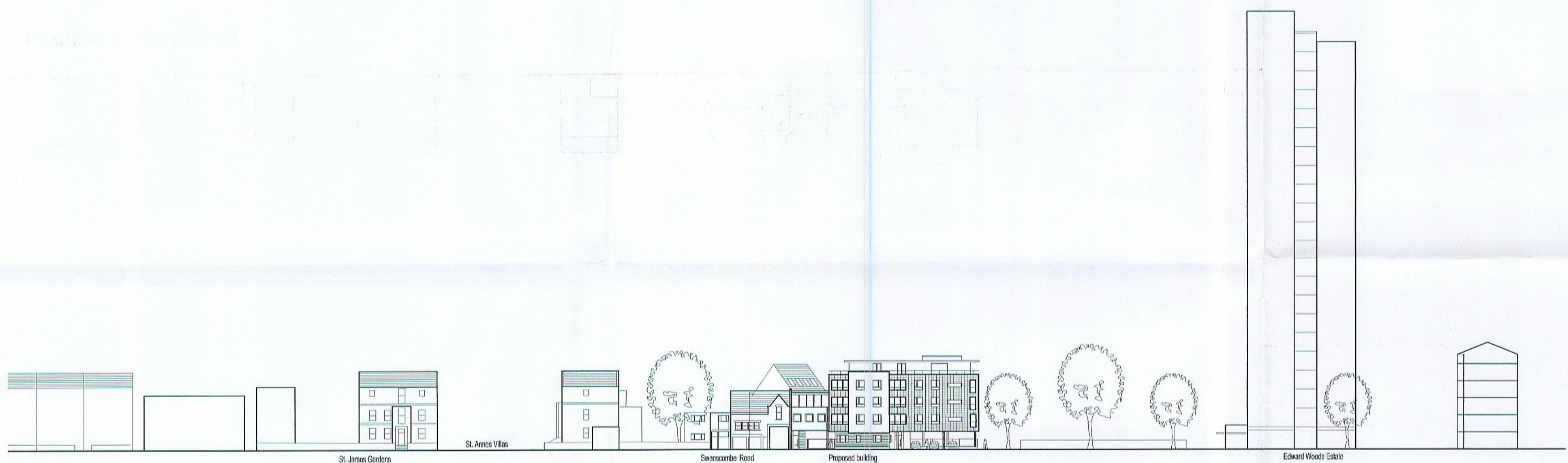


rev	dated	note

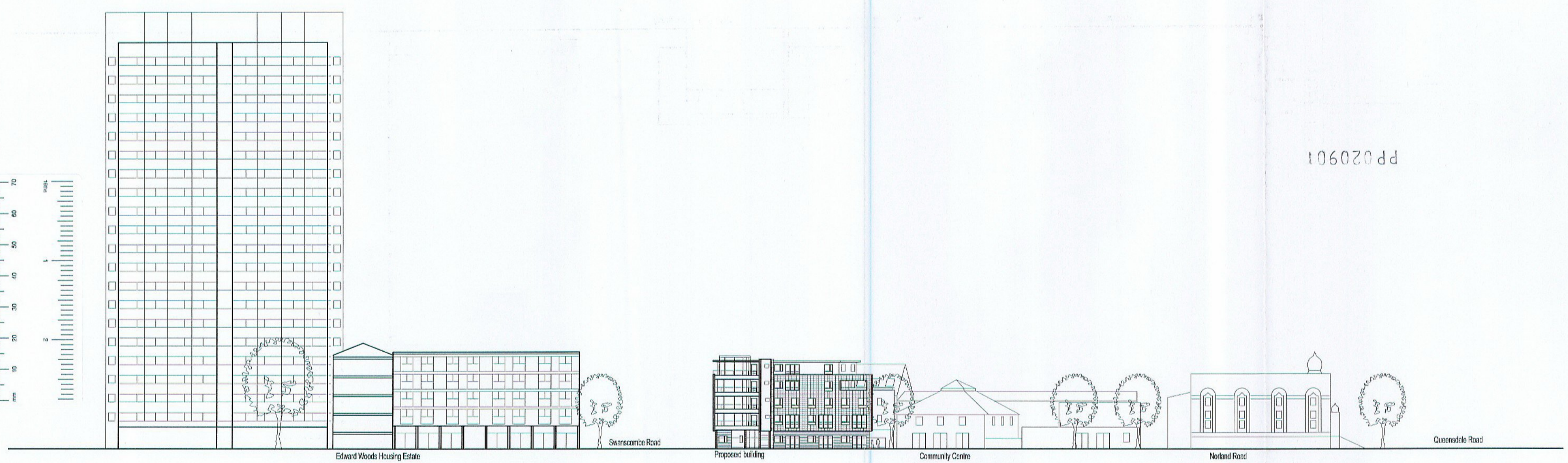
EX DIR	HDC	TP	CAC	AD	CLU	AO	AK
R.B.	K.C.	23 APR 2002	PLANNING				
N	C	SW	SE	APP	IO	REC	
ARB		FPLN	DES	FEE			



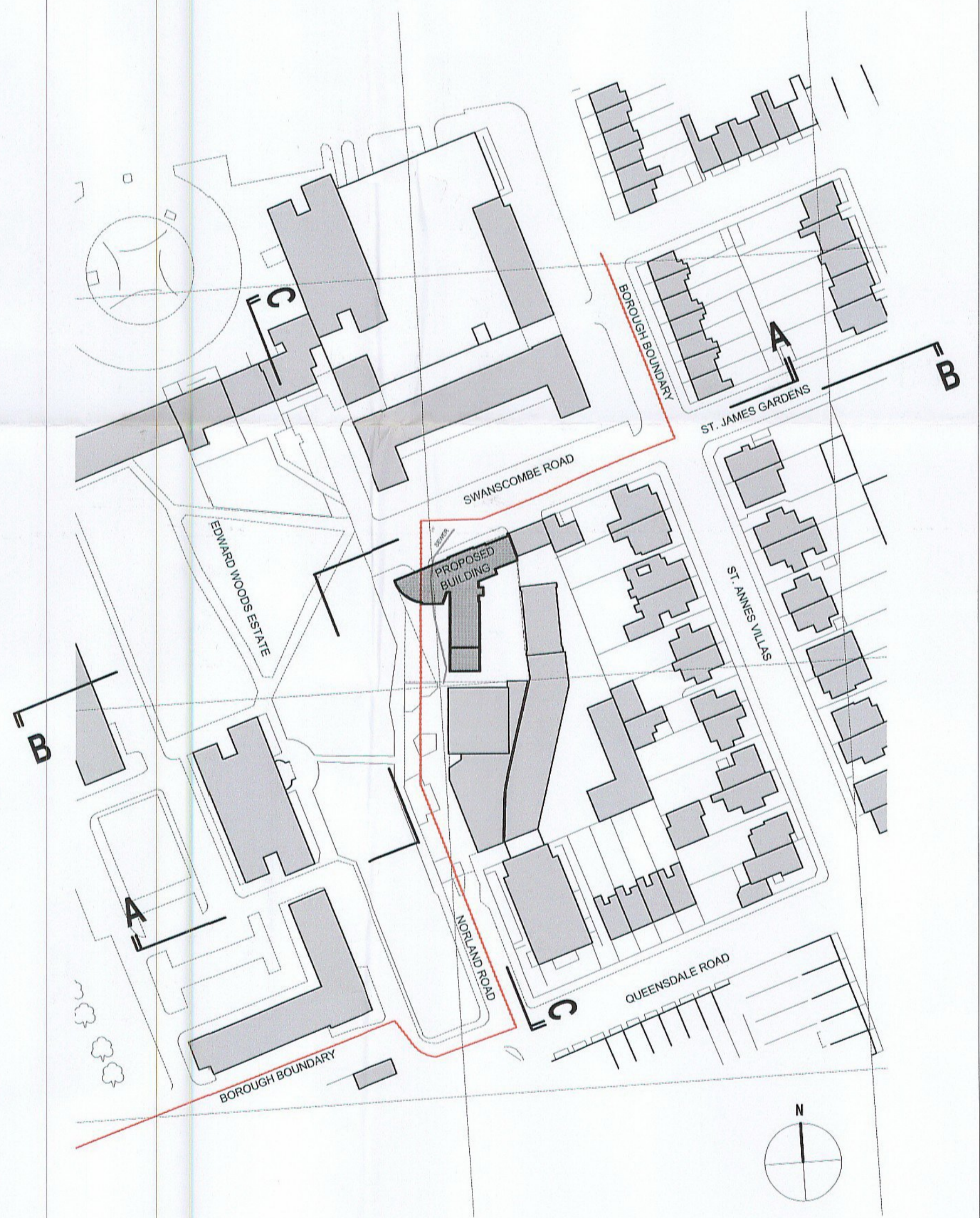
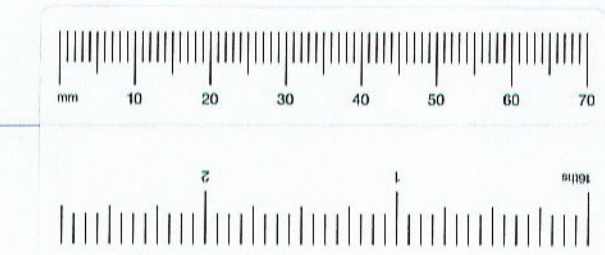
ELEVATION A-A (LOOKING NORTH)



ELEVATION B-B (LOOKING SOUTH)



ELEVATION C-C (LOOKING EAST)



SITE PLAN AND KEY TO ELEVATIONS

SCALE 1/1000

**7 SWANSCOMBE ROAD
LONDON W11**

A RESIDENTIAL DEVELOPMENT FOR NOTTING HILL HOME OWNERSHIP

drawing
STREET ELEVATIONS

scale false
1/500(@A1)

date
19th APRIL 2002

drawing no / revision
0112-P-GA10

status
PLANNING APPLICATION ISSUE

REFERENCE FILES

avanti architects

1 Torriano Mews
London NW5 2FZ
t 020 7284 1616
f 020 7284 1555
aa@avantiaarchitects.co.uk