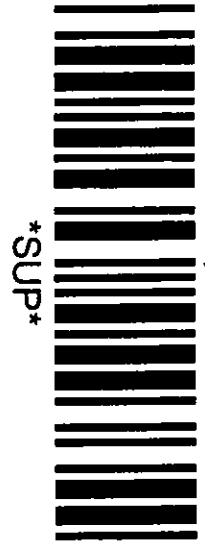


**ROYAL BOROUGH
OF
KENSINGTON & CHELSEA**

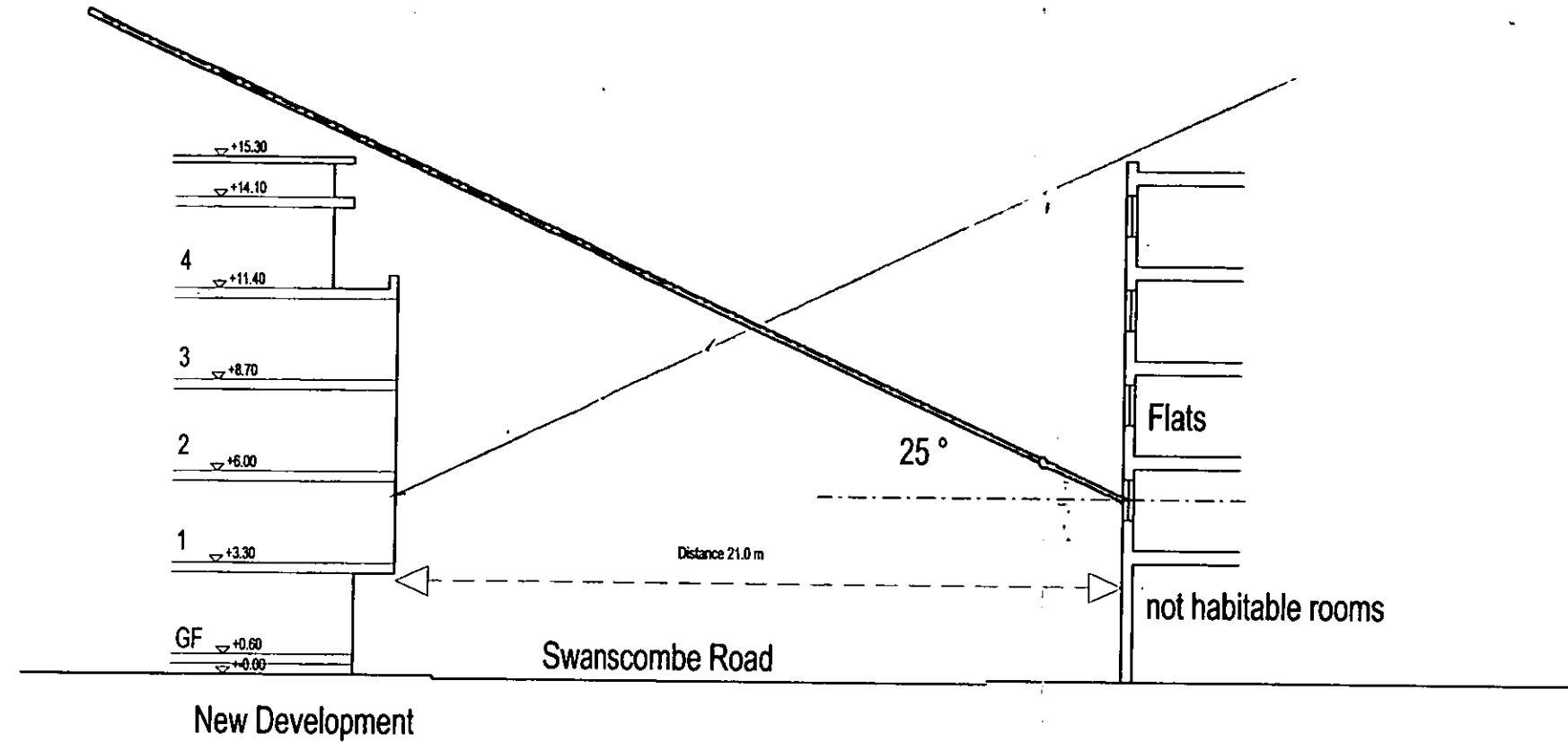
DOCUMENT SEPARATOR

DOCUMENT TYPE:

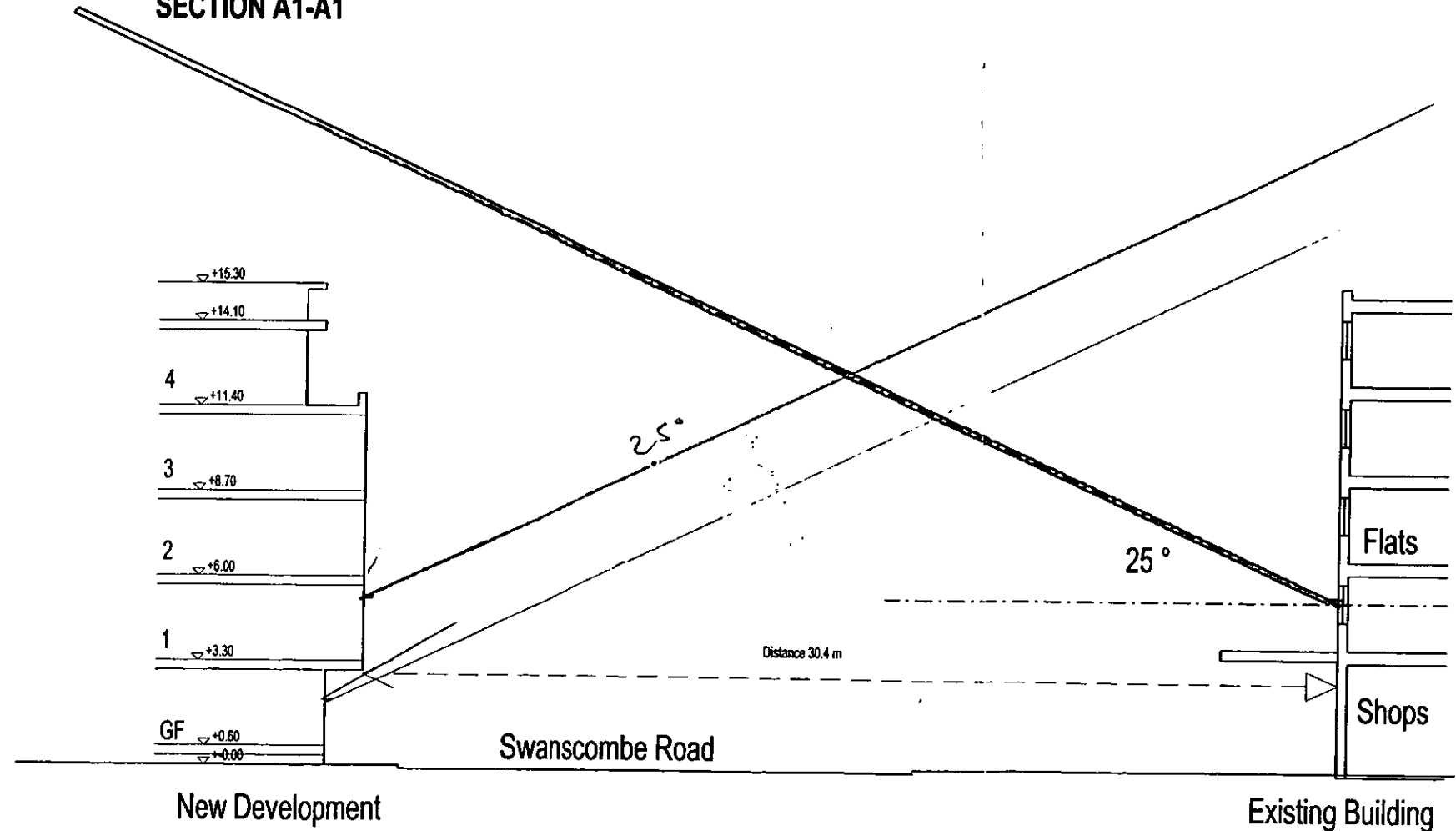
**SUPERSEDED DRAWINGS **



rev	dated	note
25		



SECTION A1-A1



SECTION A2-A2

**7 SWANSCOMBE ROAD,
W11 LONDON**

ALTERNATIVE B

drawing
LIGHT ANGLE STUDY
SECTION A-A

scale /size
1 / 200 (@ A3)

date
FEB 2002

drawing no / revision
0112-GA-018

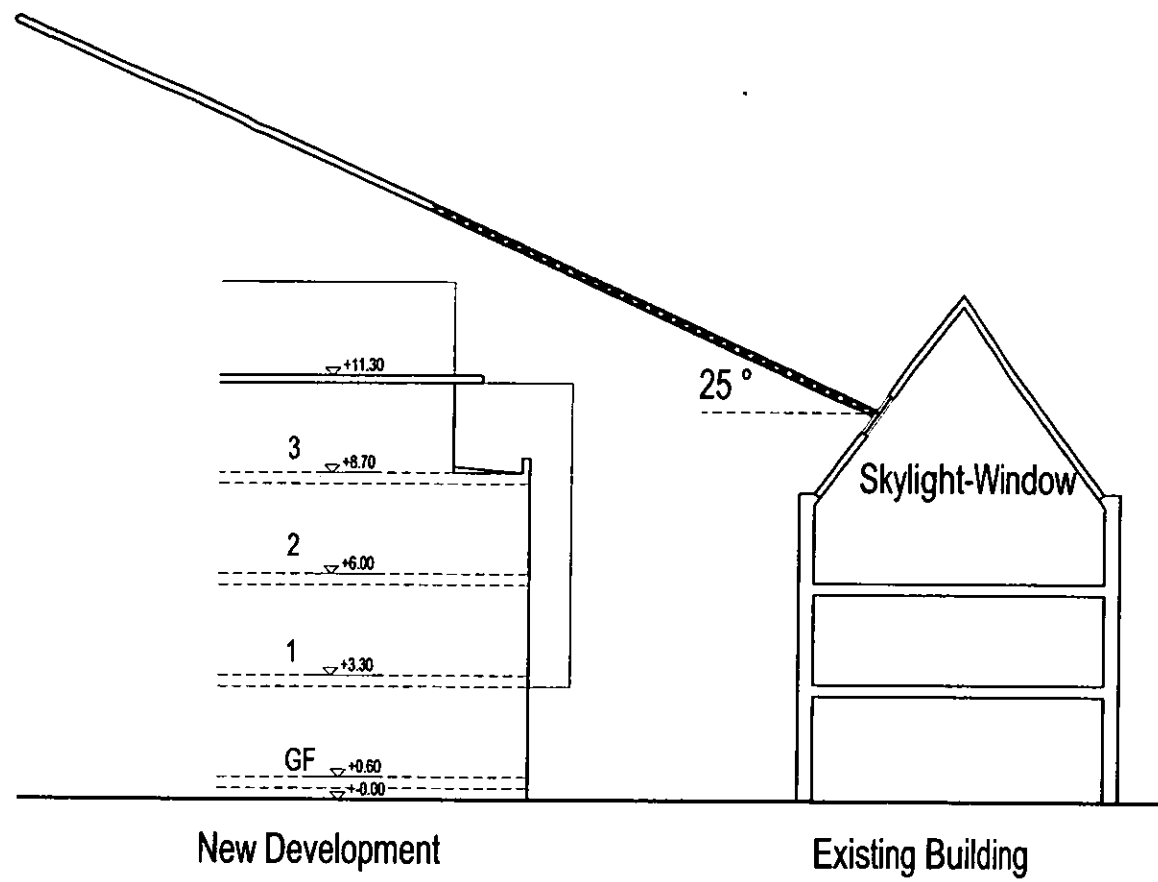
status
PRELIMINARY
FOR DISCUSSION
ONLY

REFERENCE FILES
0112-LIGHT-STUDY-SEC-A-A
0112-LIGHT-STUDY-SEC-A2-A2

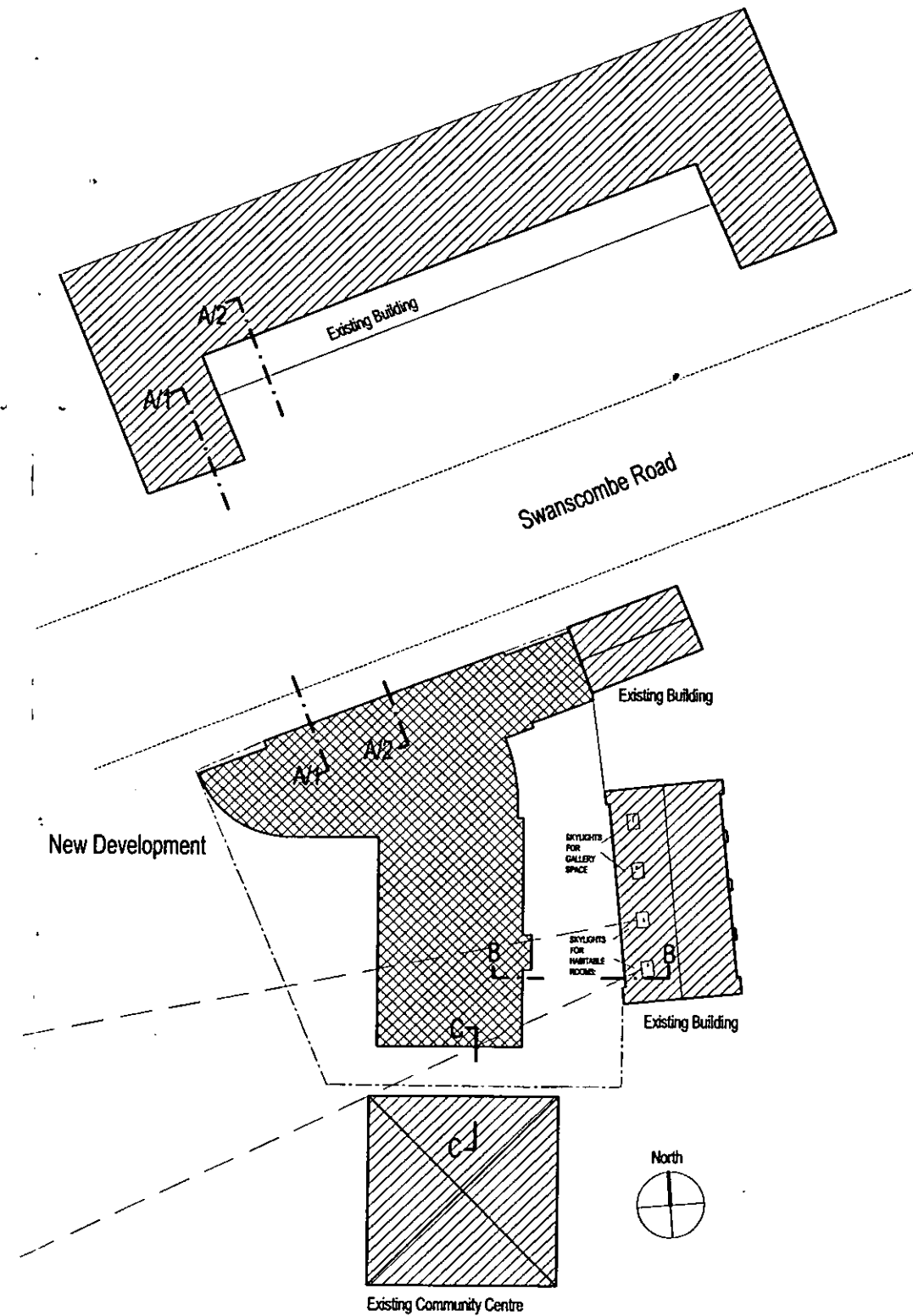
© avanti architects

1 Torriano Mews
London NW5 2RZ
t 020 7284 1616
f 020 7284 1555
aa@avantiarchitects.co.uk

rev	dated	note
		25



SECTION B-B (1-200)



SITEPLAN (1-500)

7 SWANSCOMBE ROAD,
W11 LONDON

ALTERNATIVE B

drawing
LIGHT ANGLE STUDY
SECTION B-B

scale /size

1 / 200 (@ A3)

1 / 500 (@ A3)

date

FEB 2002

drawing no / revision

0112-GA-019

status

PRELIMINARY
FOR DISCUSSION
ONLY

REFERENCE FILES

0112-LIGHT-STUDY-SEC-B-B

0112-LIGHT-STUDY-SEC-C-C

© avanti architects

1 Torriano Mews
London NW5 2RZ

t 020 7284 1616

f 020 7284 1555

aa@avantiarchitects.co.uk