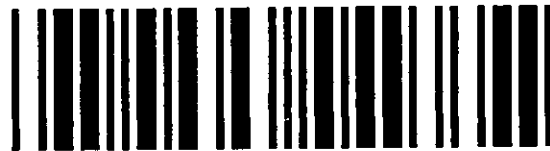
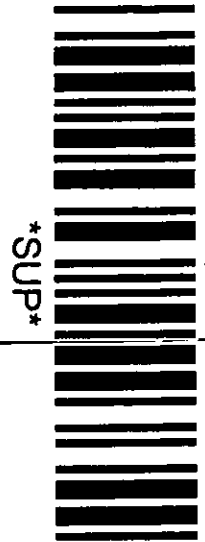


**ROYAL BOROUGH
OF
KENSINGTON & CHELSEA**

DOCUMENT SEPARATOR

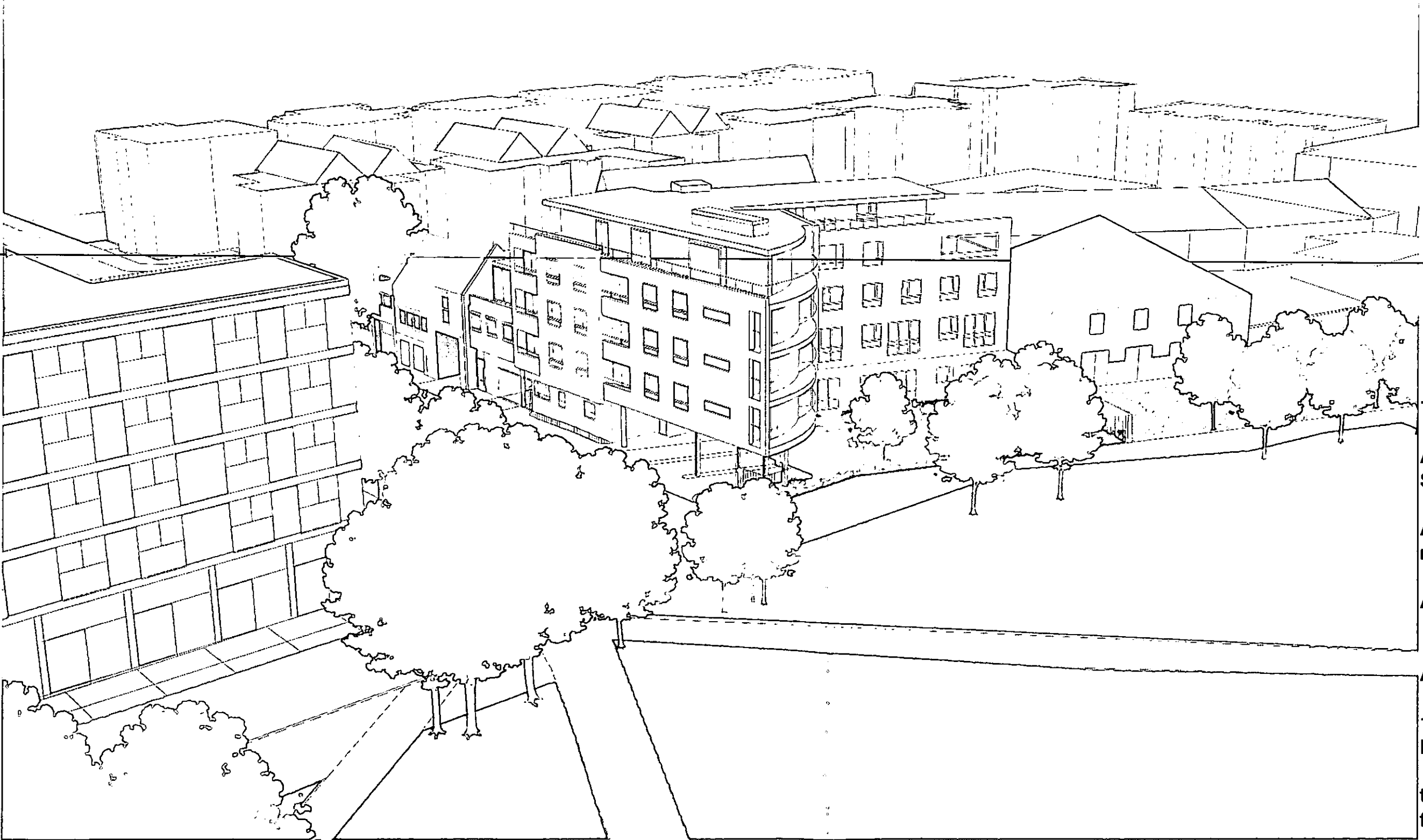
DOCUMENT TYPE:

SUPERSEDED DRAWINGS 3



SUP

41



7 Swanscombe Road W11

**Aerial view towards
St Ann's Road**

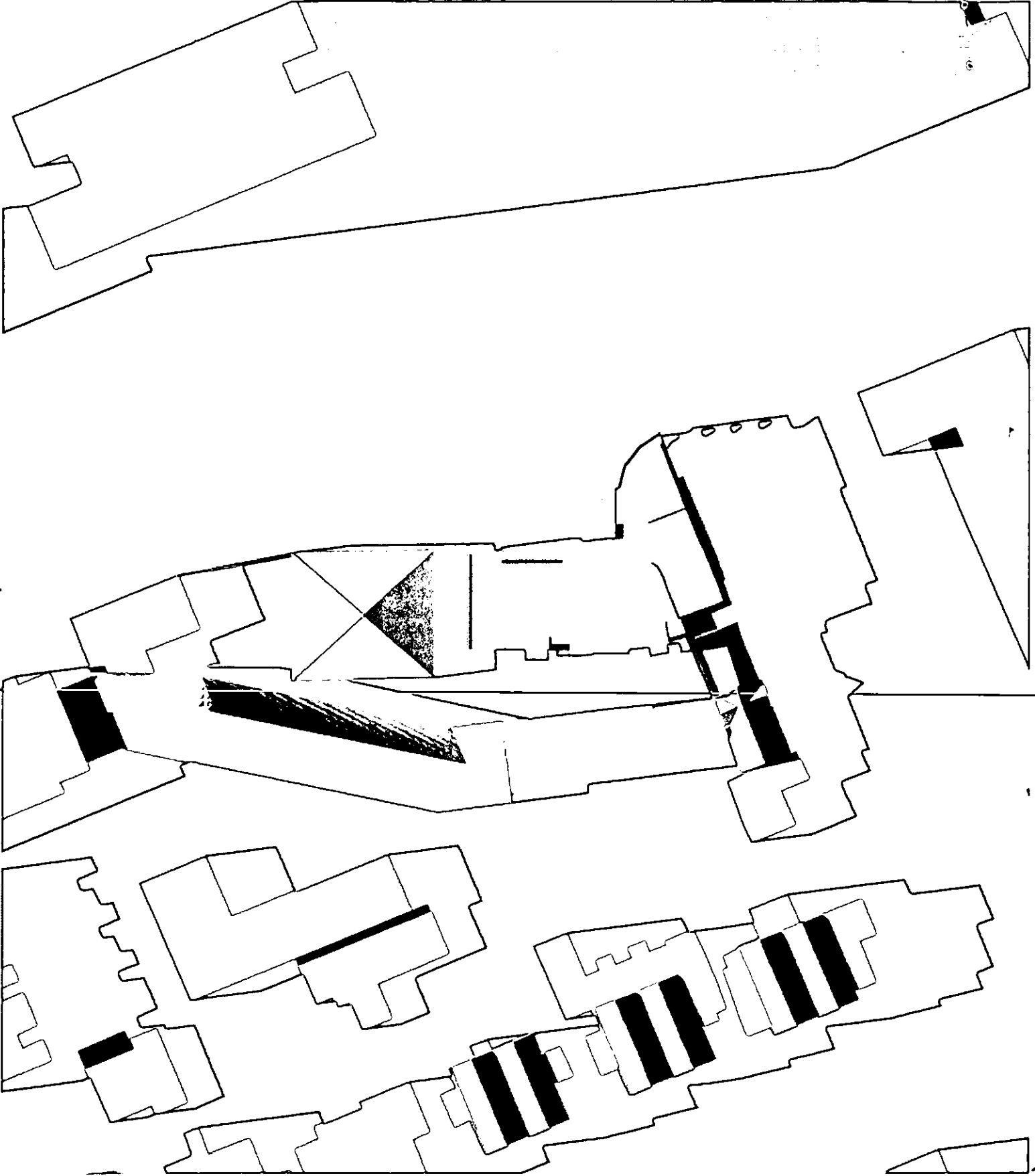
**A new development of
mixed housing by NHHO**

August 2002

Avanti Architects Ltd

**1 Torriano Mews
London NW5 2RZ**

**tel 020 7284 1616
fax 020 7284 1555**



7 SWANSCOMBE
ROAD

LIGHT STUDY:

21 MARCH
12:00 pm

COMMENTS:

NO OVER-
SHADOWING OF
ADJOINING
PROPERTIES

52

7 SWANSCOMBE
ROAD

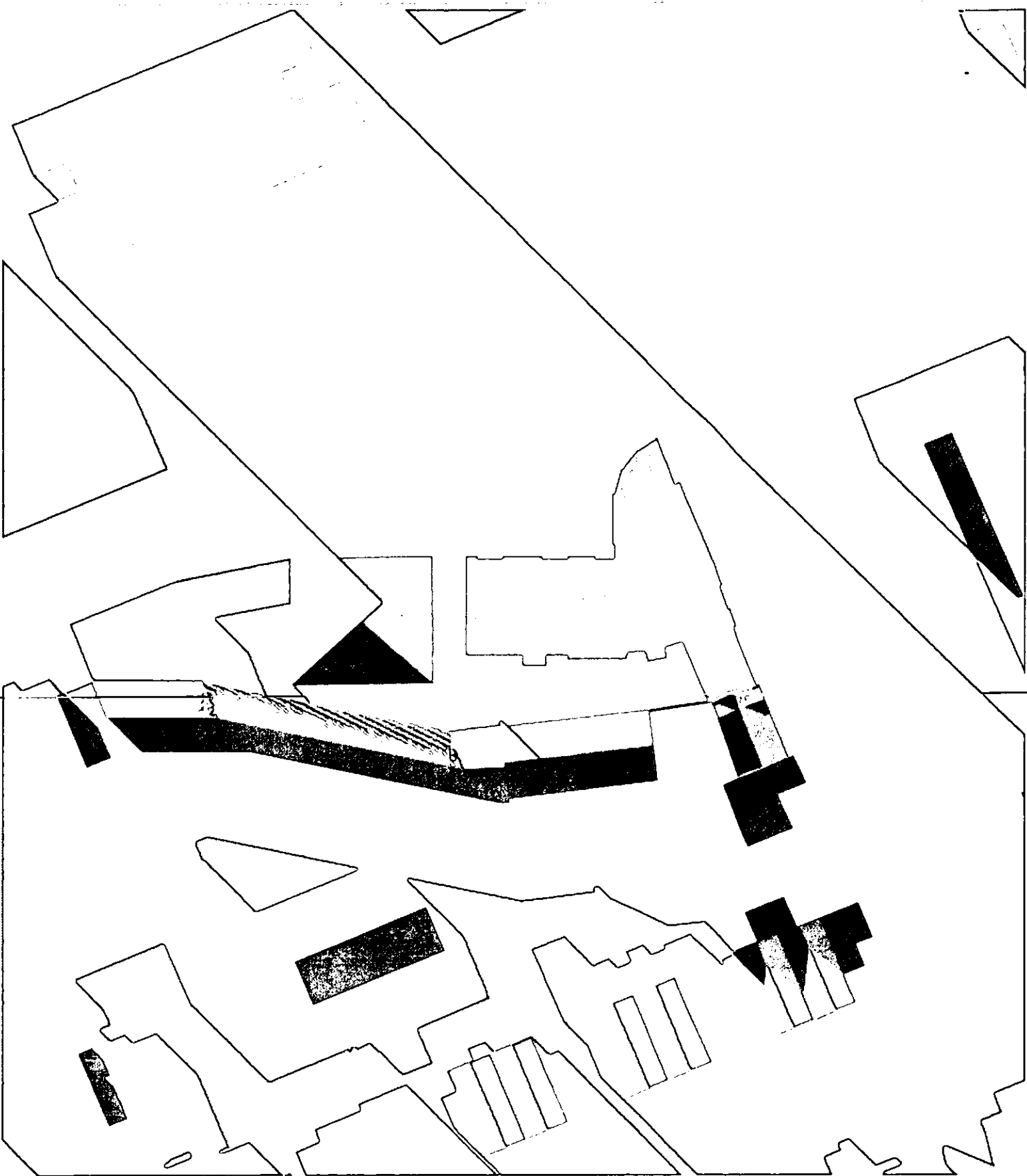
LIGHT STUDY:

21 MARCH
15.00 pm

COMMENTS:

SITE IN SHADOW
OF TOWER
BLOCK OF
EDWARD WOODS
ESTATE

53



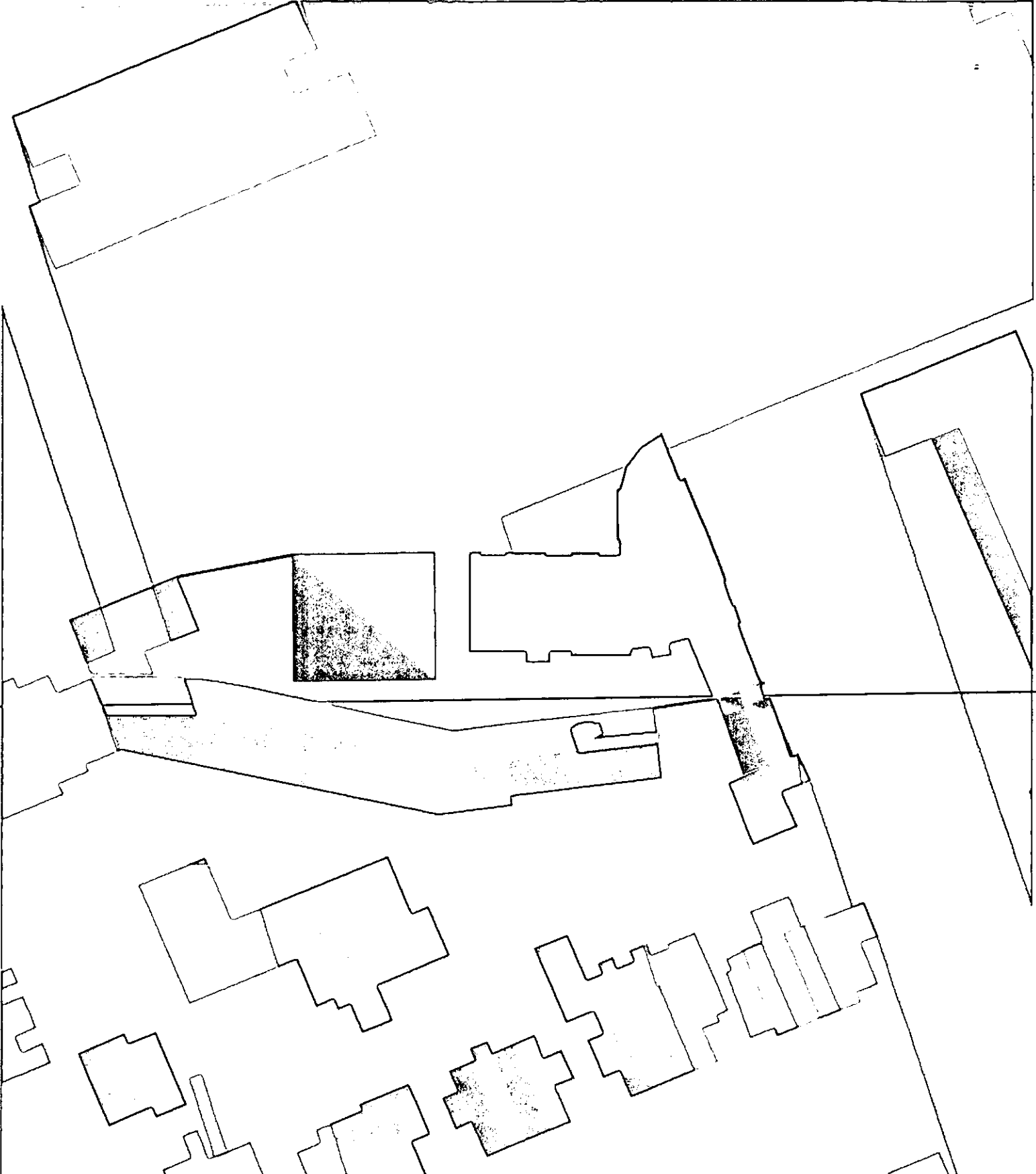
7 SWANSCOMBE
ROAD

LIGHT STUDY:

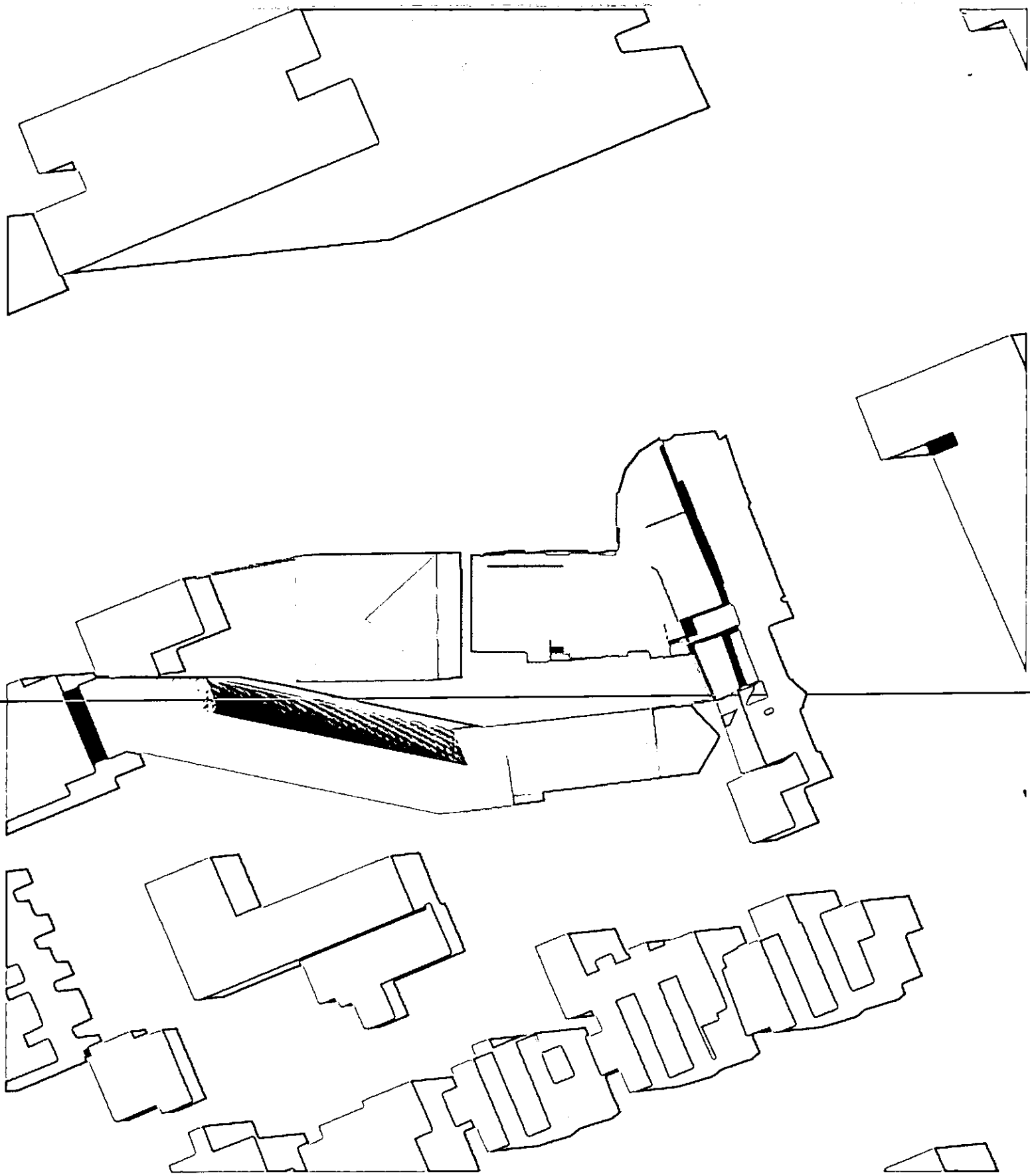
21 MARCH
17.00 pm

COMMENTS:

SHADOW CAST
ON ROOF OF
ORGAN
FACTORY.



54



7 SWANSCOMBE
ROAD

LIGHT STUDY:

21 JUNE
12.00 pm

COMMENTS:

NO OVER-
SHADOWING OF
ADJOINING
PROPERTIES

55