

# REVISED DRAWINGS

Please Index As

File Number

TP/98/2127

Jan. Feb. Mch. Apl. May June Jul Aug Sept Oct **Nov** Dec

**Part 1**

Part 11

Part 2

Part 12

Part 3

Part 13

Part 4

Part 14

Part 5

Part 15

Part 6

Part 16

Part 7

Part 17

Part 8

Part 18

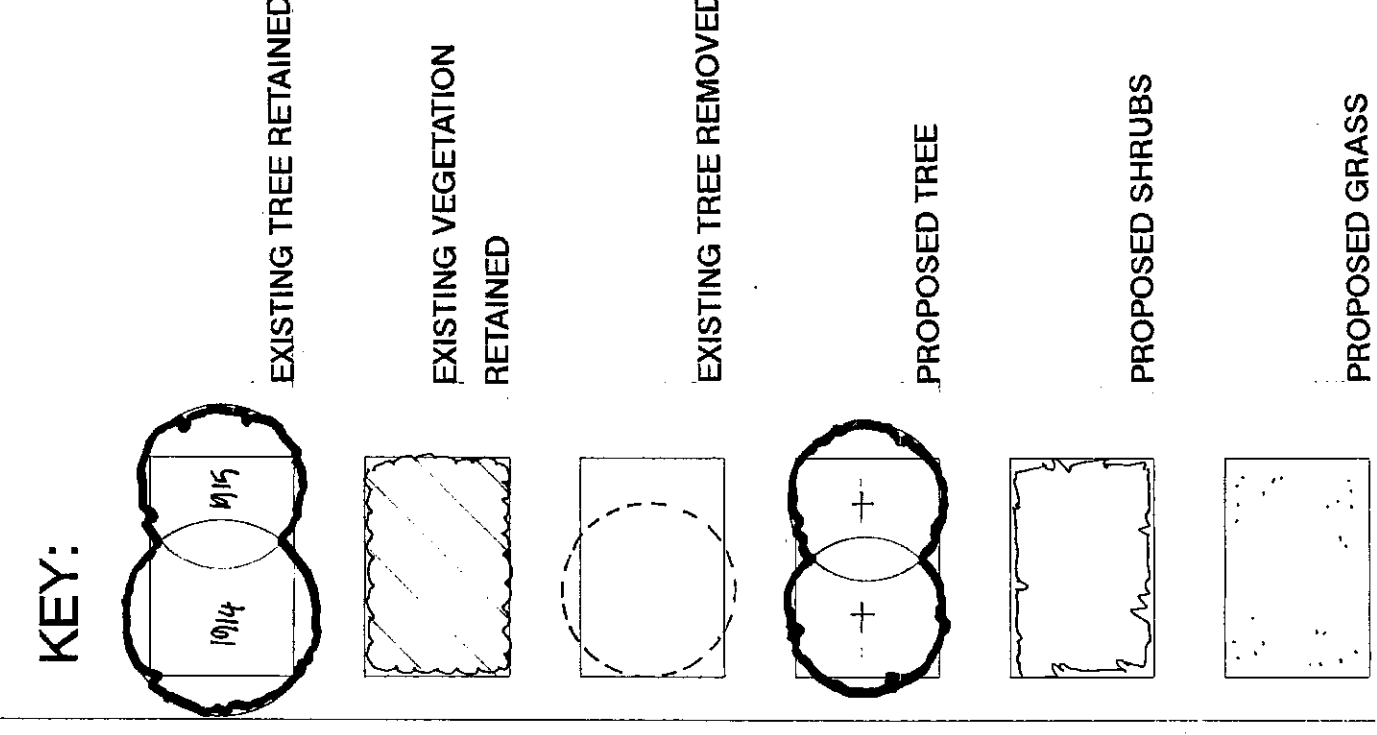
Part 9

Part 19

Part 10

Part 20

19/06/2027  
 CONTRACTORS ARE NOT TO SCALE  
 DIMENSIONS FROM THIS DRAWING



A SCHEME AMENDED TO NEW BUILDING  
 ARRANGEMENTS 20.10.98



**BROADWAY MALAYAN  
 LANDSCAPE**  
 Broadway Malayan Landscape Limited

Weybridge, Wokingham Hill, Addlestone  
 Weybridge, Surrey, KT15 2QA  
 Telephone: 01332 845269 Fax: 01332 846445  
 LONDON: 115, Tottenham Court Road  
 Telephone: 01753 830855 Fax: 01753 830856  
 Reading: Lux House, 10 High Street  
 The Priory, Reading, RG1 1AA  
 Telephone: 01332 845269 Fax: 01332 8461  
 Southampton: 8 Southampton Street  
 Southampton, Hampshire SO1 2ED  
 Telephone: 01703 530855 Fax: 01703 530856  
 Manchester: 4 King Street  
 Manchester, M2 6BA  
 Telephone: 0161 819 2277 Fax: 0161 819 2332

ST. JAMES HOMES

6 NOV 1998

RECEIVED

AUBREY WALK

CAMPDEN HILL

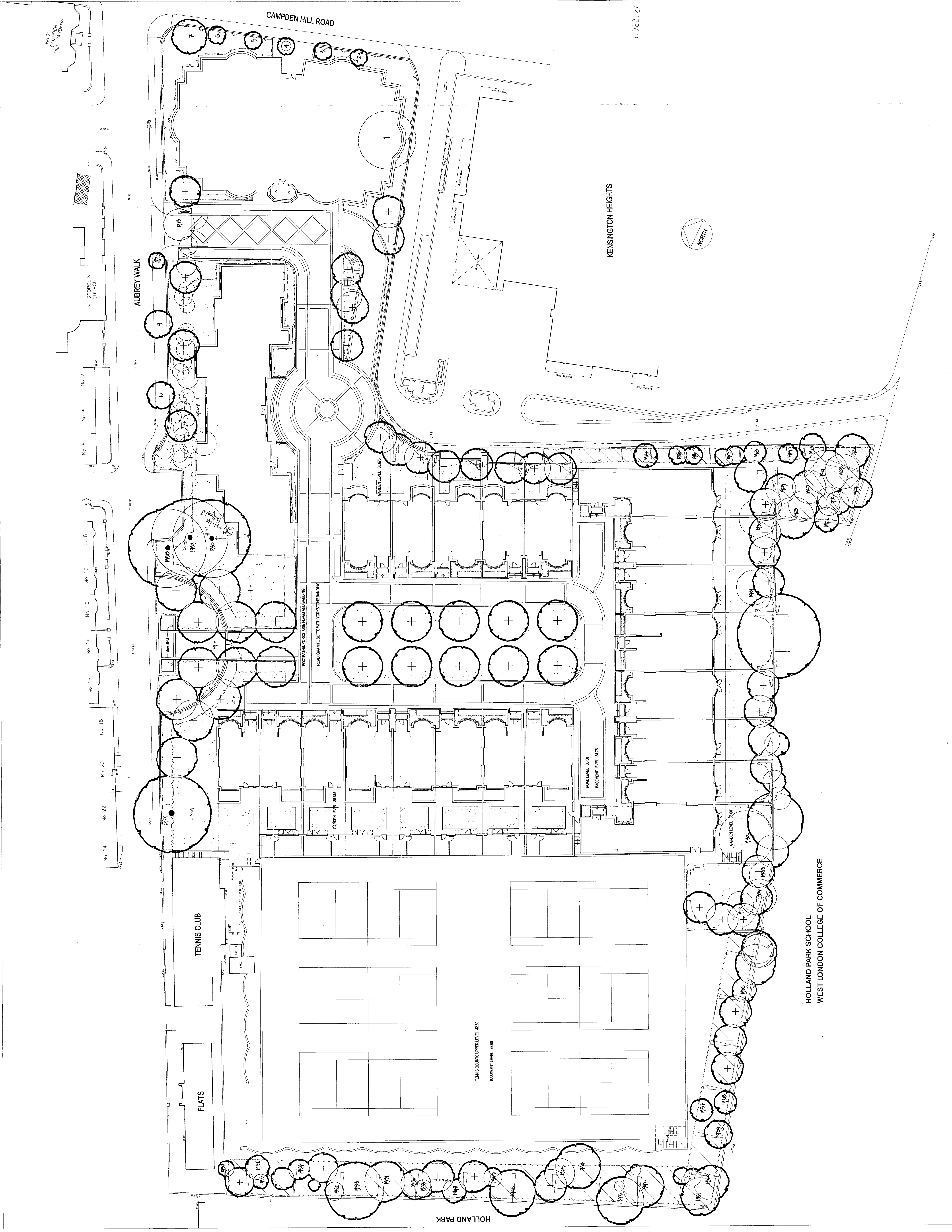
RESERVOIR

LANDSCAPE

PROPOSALS

Scale: 1:200 Date: SEPT 98 Drawn: SA  
 Job no: 10337-100 Drawing no: 10337-100  
 Revision: A

Copyright © 1998 Broadway Malayan Landscape Limited  
 All Rights Reserved



HOLLAND PARK SCHOOL  
 WEST LONDON COLLEGE OF COMMERCE