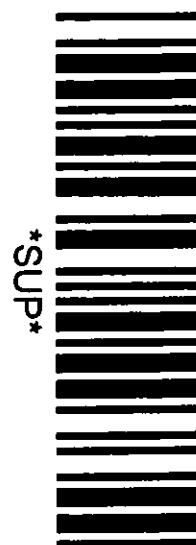


**ROYAL BOROUGH
OF
KENSINGTON & CHELSEA**

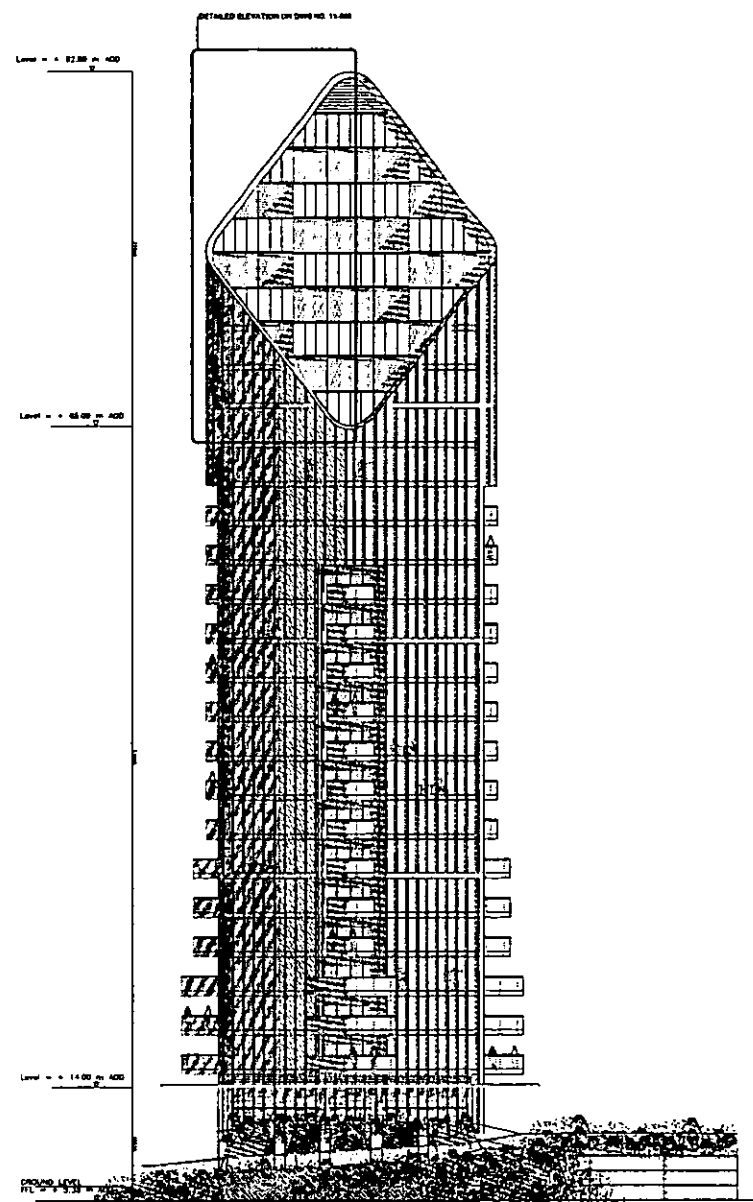
DOCUMENT SEPARATOR

DOCUMENT TYPE:

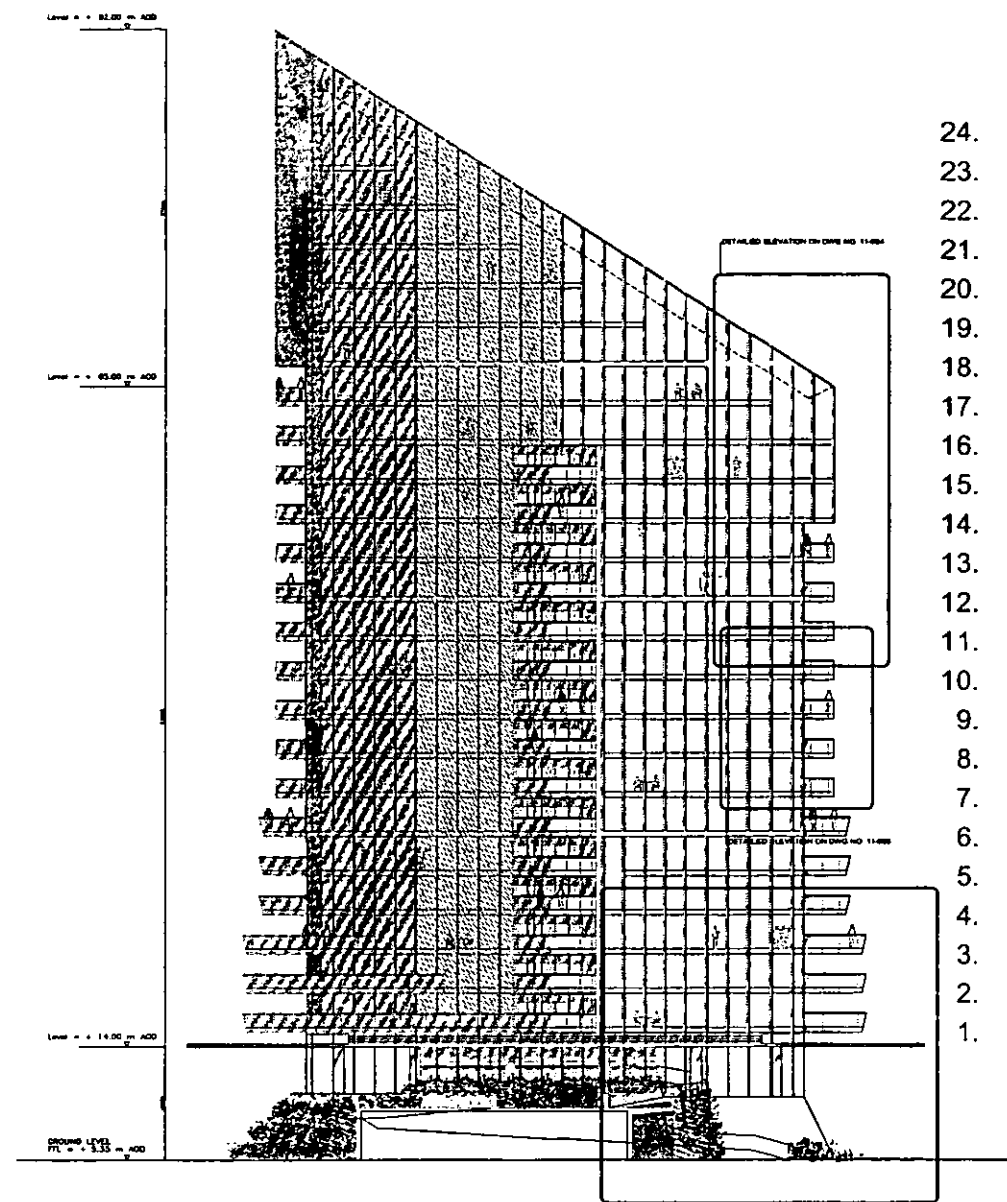
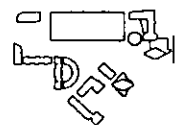
SUPERSEDED DRAWINGS



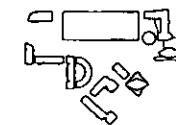
148



BLOCK KC1
EAST-ELEVATION



BLOCK KC1
SOUTH-ELEVATION



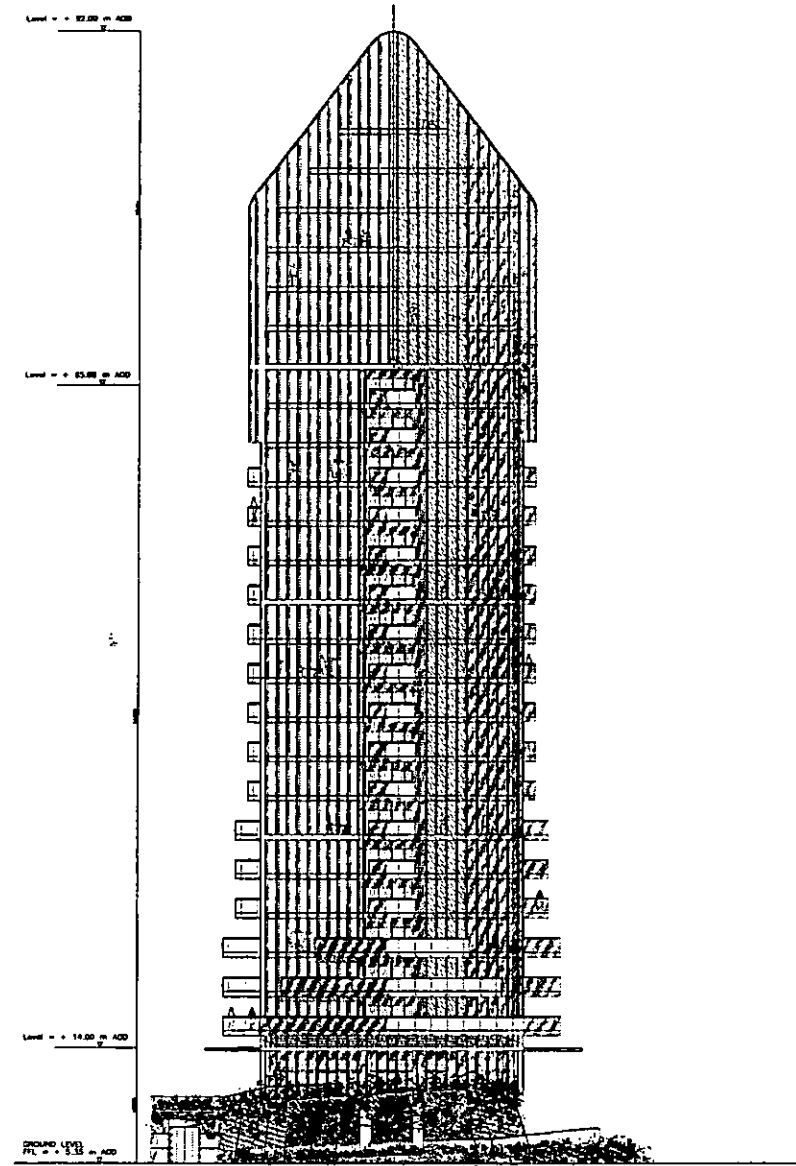
LOTS ROAD POWERSTATION AND LAND AT THAMES AVENUE DEVELOPMENT

BLOCK KC1: BUILDING ELEVATIONS
OCTOBER 2004

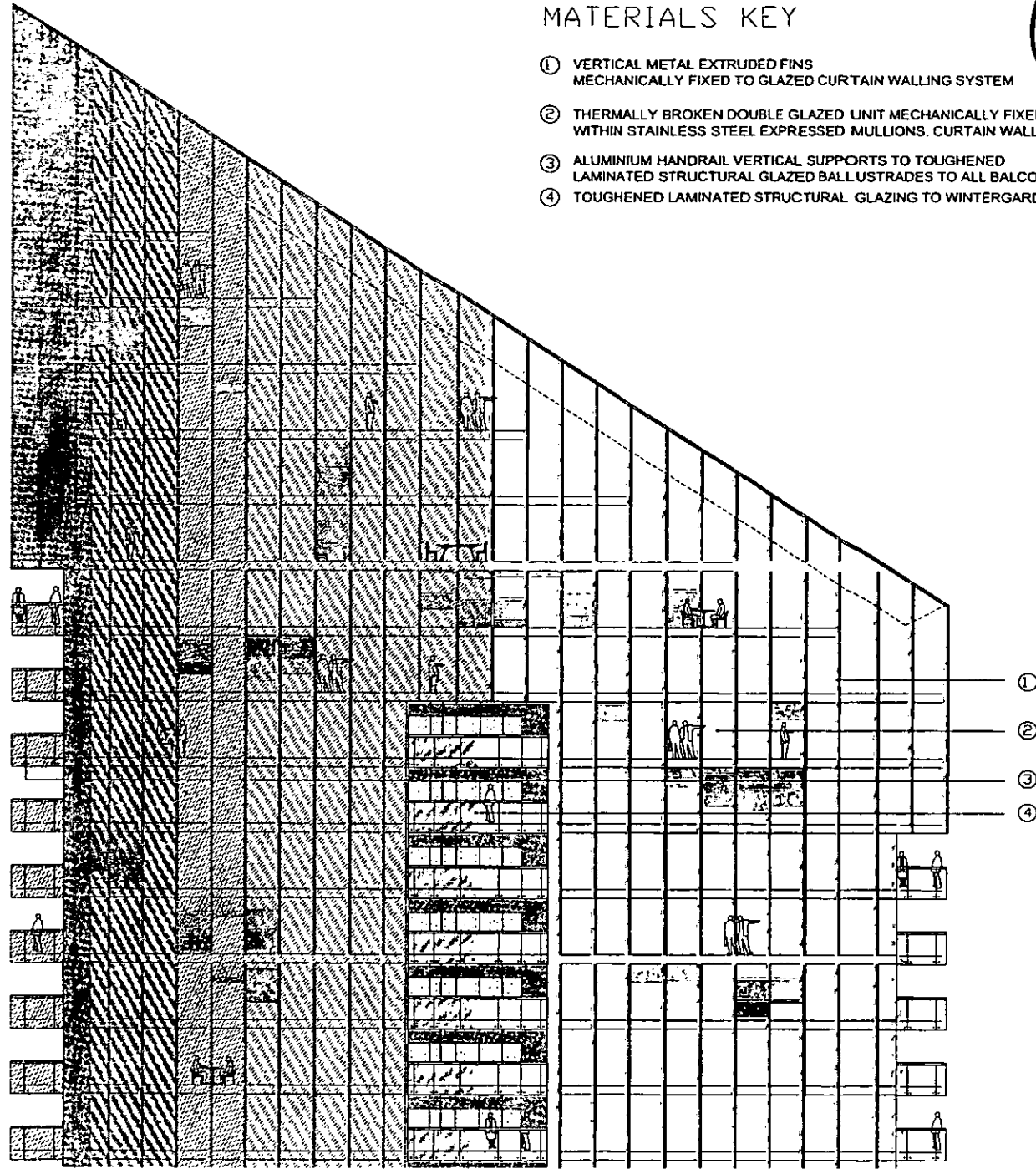
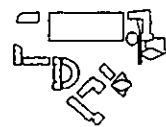
149

MATERIALS KEY

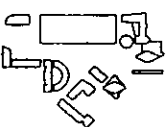
- ① VERTICAL METAL EXTRUDED FINNS
MECHANICALLY FIXED TO GLAZED CURTAIN WALLING SYSTEM
- ② THERMALLY BROKEN DOUBLE GLAZED UNIT MECHANICALLY FIXED
WITHIN STAINLESS STEEL EXPRESSED MULLIONS. CURTAIN WALLING
- ③ ALUMINIUM HANDRAIL VERTICAL SUPPORTS TO TOUGHENED
LAMINATED STRUCTURAL GLAZED BALUSTRADES TO ALL BALCONIES
- ④ TOUGHENED LAMINATED STRUCTURAL GLAZING TO WINTERGARDEN

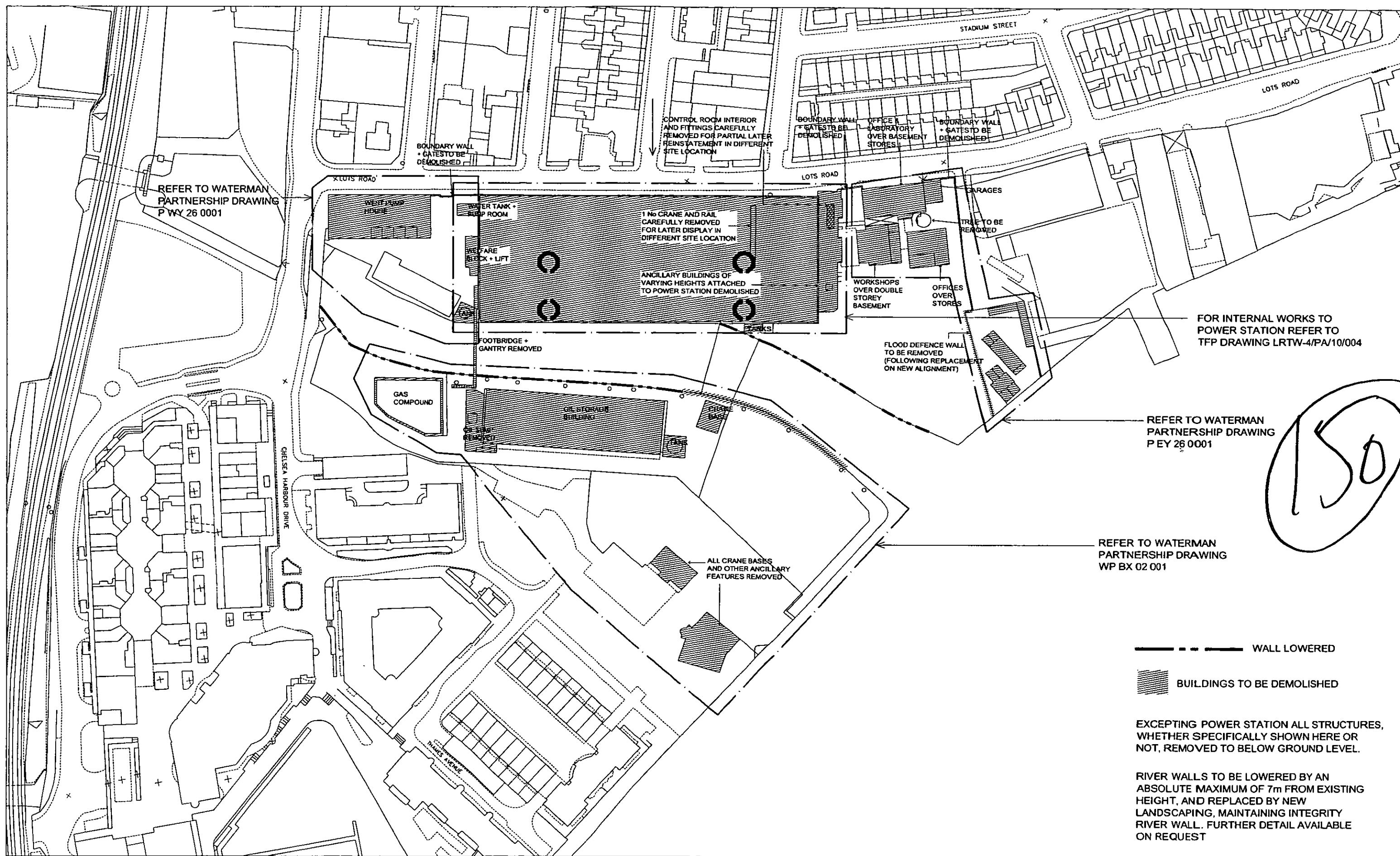


BLOCK KC1
WEST-ELEVATION



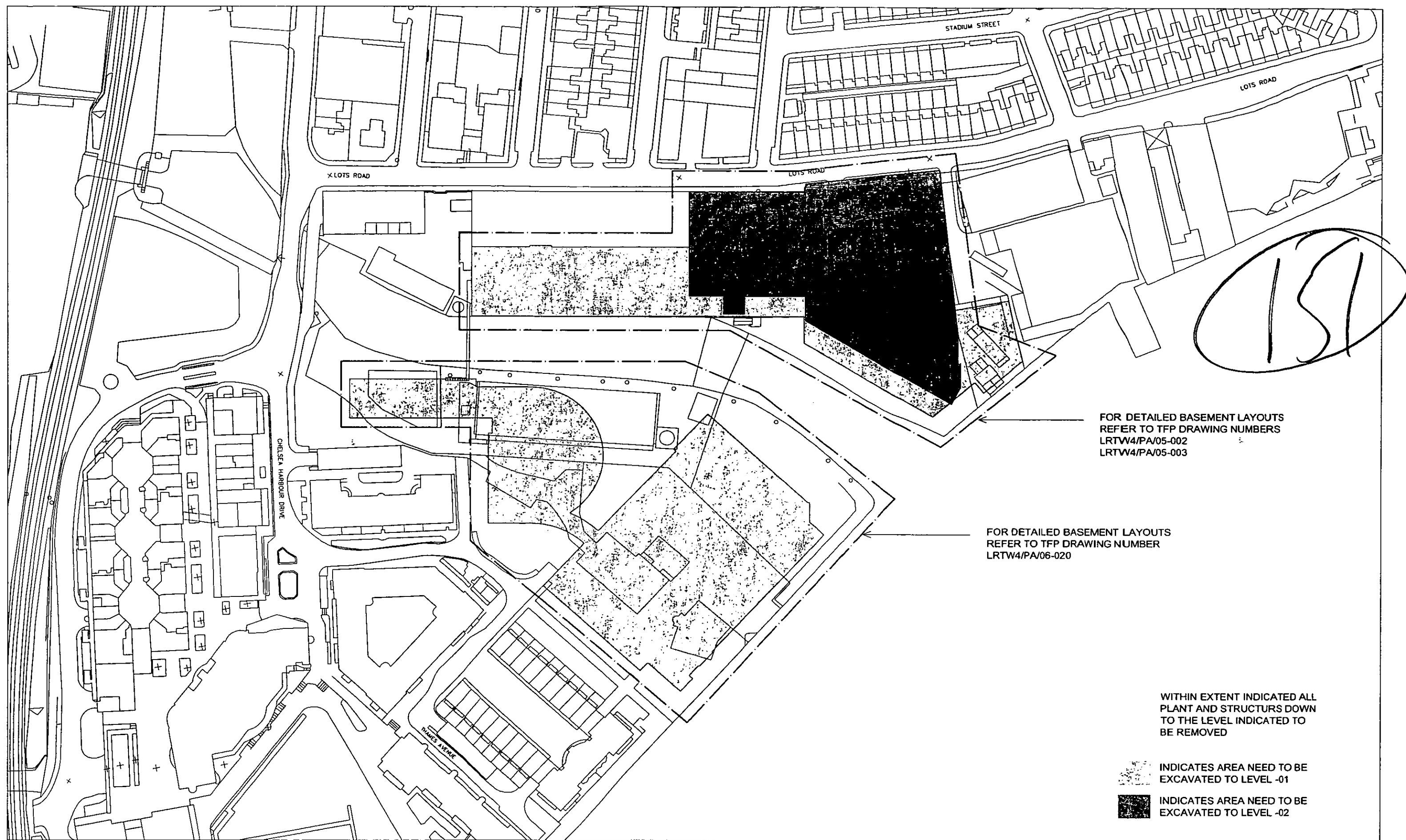
- ①
- ②
- ③
- ④





LOTS ROAD POWERSTATION AND LAND AT THAMES AVENUE DEVELOPMENT
DEMOLITION SCOPE OF WORKS

SCALE 1/500 @ A0
LRTW-4-PA-10-001-B



LOTS ROAD POWERSTATION AND LAND AT THAMES AVENUE DEVELOPMENT
BASEMENT STRUCTURES TO BE REMOVED / EXTENT OF EXCAVATION

SCALE 1/500 @ A0
LRTW-4-PA-10-002-B

REFER TO WATERMAN
ENVIRONMENTAL
DRAWINGS FOR PLANT
REMOVAL

152

REFER WATERMAN
PARTNERSHIP DRAWING
FOR BUILDINGS AND
STRUCTURES IN EAST
YARD

ANCILLARY BUILDINGS
OF VARYING HEIGHTS
ATTACHED TO POWER
STATION DEMOLISHED

BOUNDARY
WALL AND
GATES
DEMOLISHED

REFER WATERMAN
PARTNERSHIP DRAWING
FOR BUILDINGS AND
STRUCTURES IN WEST
YARD

WELFARE BLOCK AND
LIFT DEMOLISHED

NORTH ELEVATION TO LOTS ROAD

EAST ELEVATION

ANCILLARY BUILDINGS
OF VARYING HEIGHTS
ATTACHED TO POWER
STATION DEMOLISHED

REFER WATERMAN
PARTNERSHIP DRAWING
FOR BUILDINGS AND
STRUCTURES IN WEST
YARD

WELFARE BLOCK AND
LIFT DEMOLISHED

REFER SUBMITTED PLAN
LRTW4/PA/10/004 FOR
OPENINGS IN RETAINED
CHIMNEYS

REFER SUBMITTED PLAN
LRTW4/PA/10/004 FOR
OPENINGS IN RETAINED
CHIMNEYS

RECESSED ROUND SECTION OF
TERRACOTTA FRIEZE TO BE REMOVED.
WHILST EVERY POSSIBLE EFFORT
WILL BE MADE TO RETAIN SURROUNDING
WORK, ALLOW FOR COMPLETE REMOVAL
OF FRIEZE (AND REPLACEMENT WITH
NEW MATCHING MATERIAL)

ANCILLARY BUILDINGS
OF VARYING HEIGHTS
ATTACHED TO POWER
STATION DEMOLISHED

REFER WATERMAN
PARTNERSHIP DRAWING
FOR BUILDINGS AND
STRUCTURES IN EAST
YARD

WELFARE BLOCK AND
LIFT DEMOLISHED

SOUTH ELEVATION TO CHELSEA CREEK

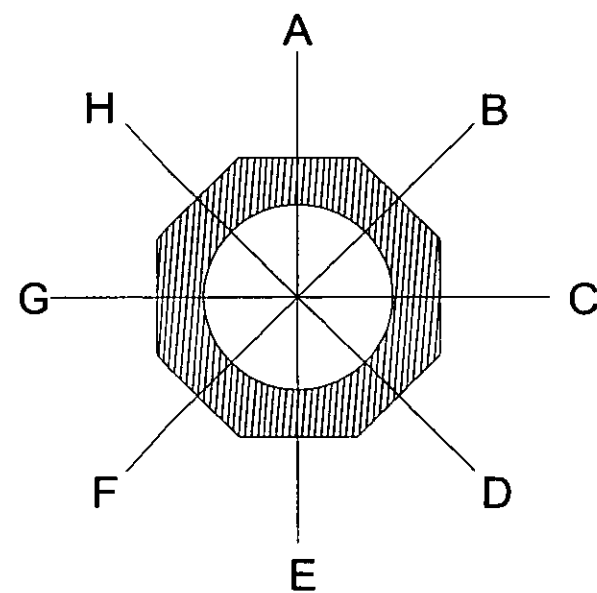
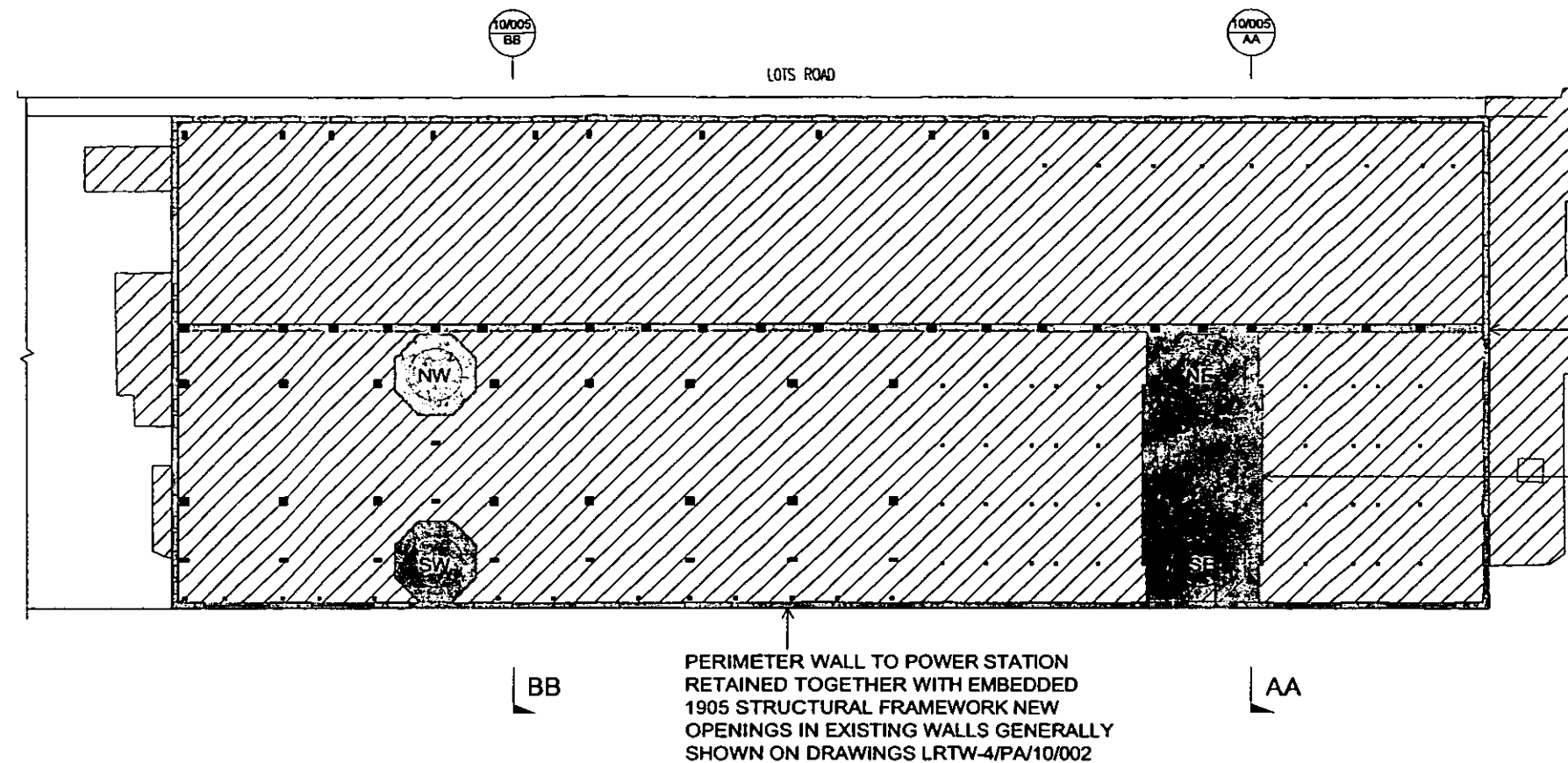
WEST ELEVATION

AREA OF DEMOLITION

ALL EXISTING WINDOWS AND DOORS TO BE REMOVED

LOTS ROAD POWERSTATION AND LAND AT THAMES AVENUE DEVELOPMENT

ELEVATIONS SHOWING REMOVED WORK
OCTOBER 2004



KEY PLAN OF CHIMNEY OPENINGS
- REFER TO TABLE FOR LOCATION AND LEVEL

CHIMNEY OPENINGS

1.5m WIDTH x 2.5m HEIGHT OPENINGS FORMED IN CHIMNEYS IN LOCATIONS AT LEVELS SHOWN

LEVELS	CHIMNEY NW	CHIMNEY NE	CHIMNEY SW	CHIMNEY SE
-02		E		
-01	E	E	CG	
00	E	E	AE	AE
01			ADEF *	
02			ADEF *	
03			ADEF *	
04			ADEF *	
05			ADEF *	
06			ADEF *	
07			DFH	
08			BDFH	
09			CG	CG
10			ADEF *	
11			ADEF *	ADEF *
12			A	A

* DENOTES OPENINGS AT LOCATION 'E' ARE 0.5m WIDTH X 2.5m HEIGHT

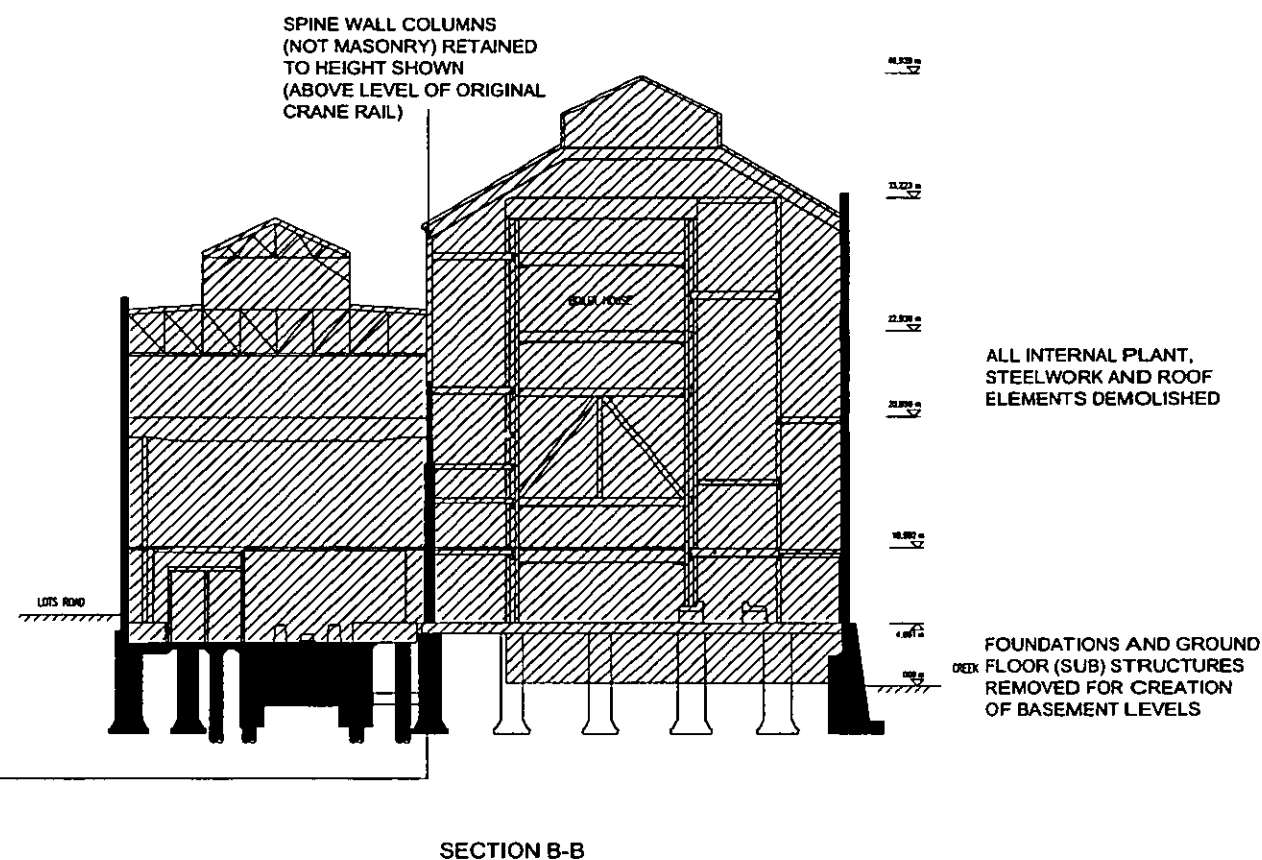
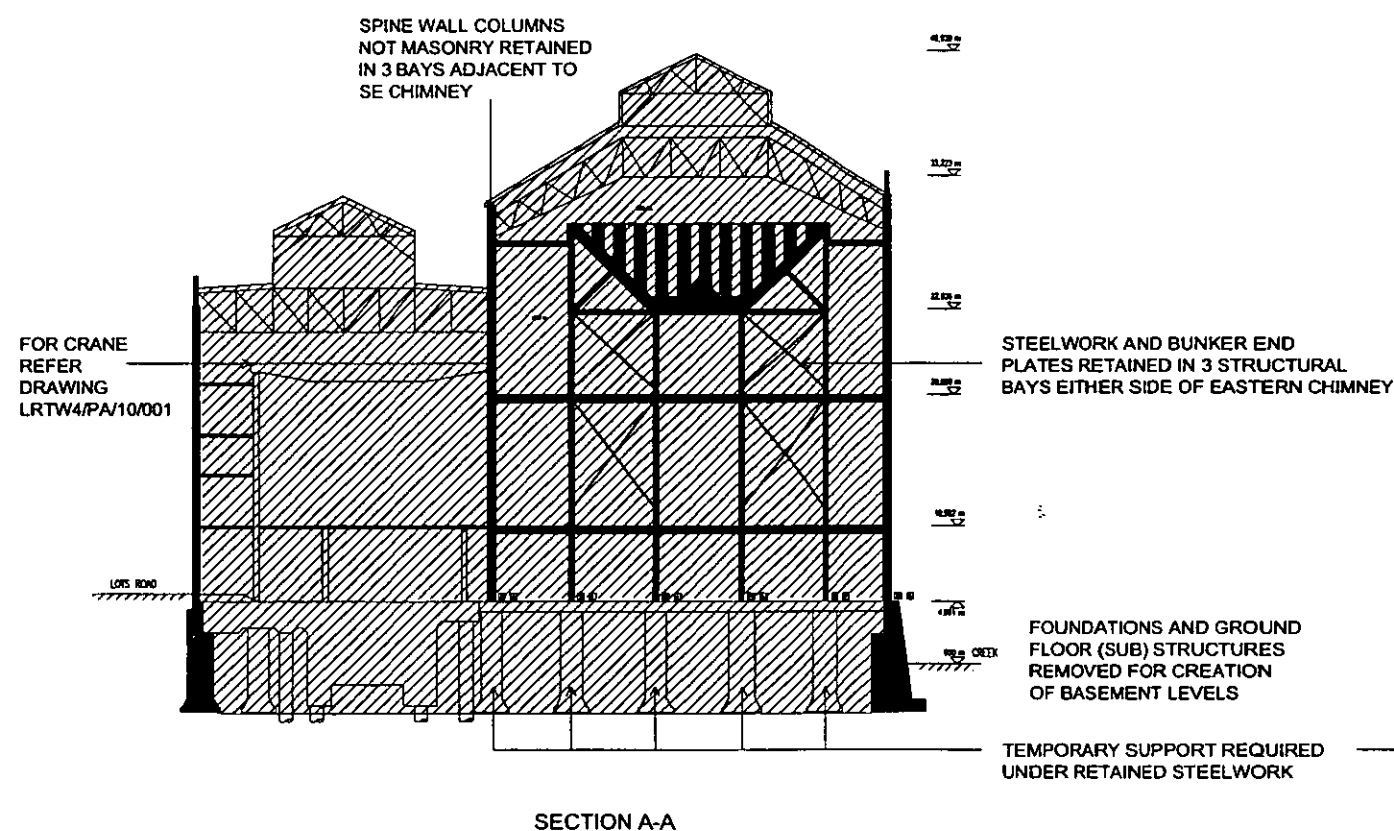
REFER TO WATERMAN ENVIRONMENTAL DRAWINGS FOR PLANT REMOVAL



LOTS ROAD POWERSTATION AND LAND AT THAMES AVENUE DEVELOPMENT

DEMOLITION PLAN FOR POWER STATION INTERIOR

OCTOBER 2004

154



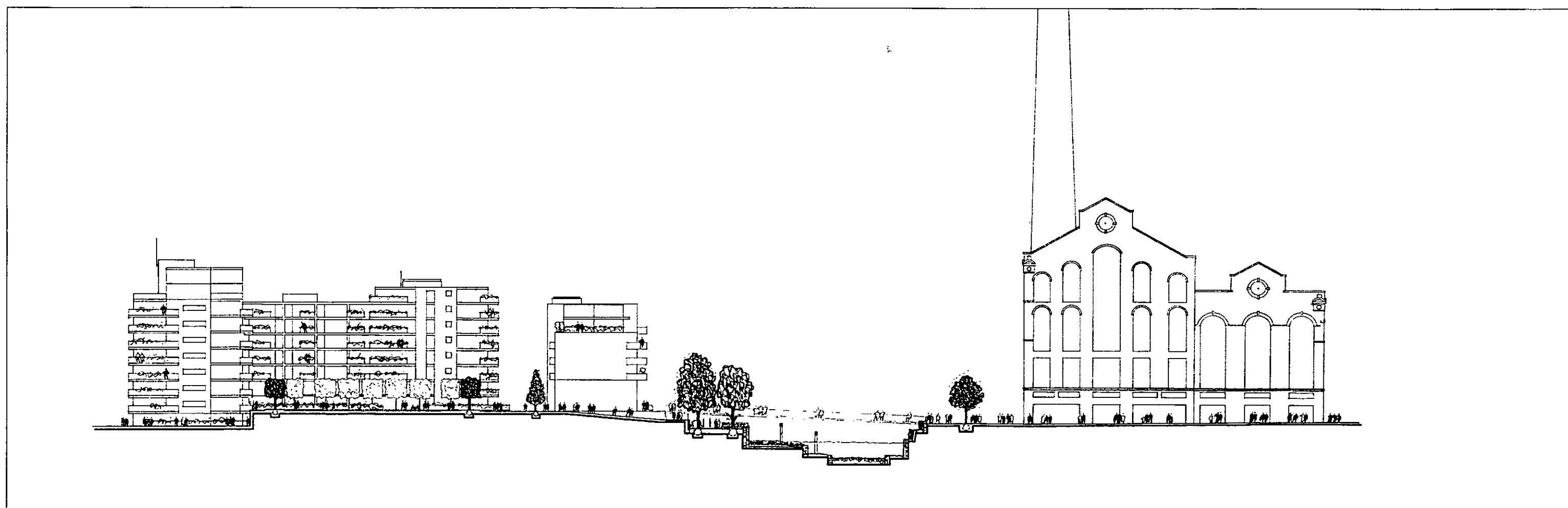
 AREA TO BE DEMOLISHED
 AREA TO BE RETAINED

CHIMNEYS NOT SHOWN FOR CLARITY, BUT RETAINED IN THEIR ENTIRETY. REFER DRAWING LRTW-4/PA/10/004 FOR NEW OPENINGS IN CHIMNEYS

REFER TO WATERMAN ENVIRONMENTAL DRAWINGS FOR PLANT REMOVAL

REFER TO TFP DRAWING LRTW-4/PA/07-007 FOR HEIGHT OF SPINE WALL COLUMNS

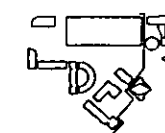
155



LOTS ROAD POWERSTATION AND LAND AT THAMES AVENUE DEVELOPMENT

SUPPLEMENTARY DRAWING: LONG SECTION EAST
OCTOBER 2004

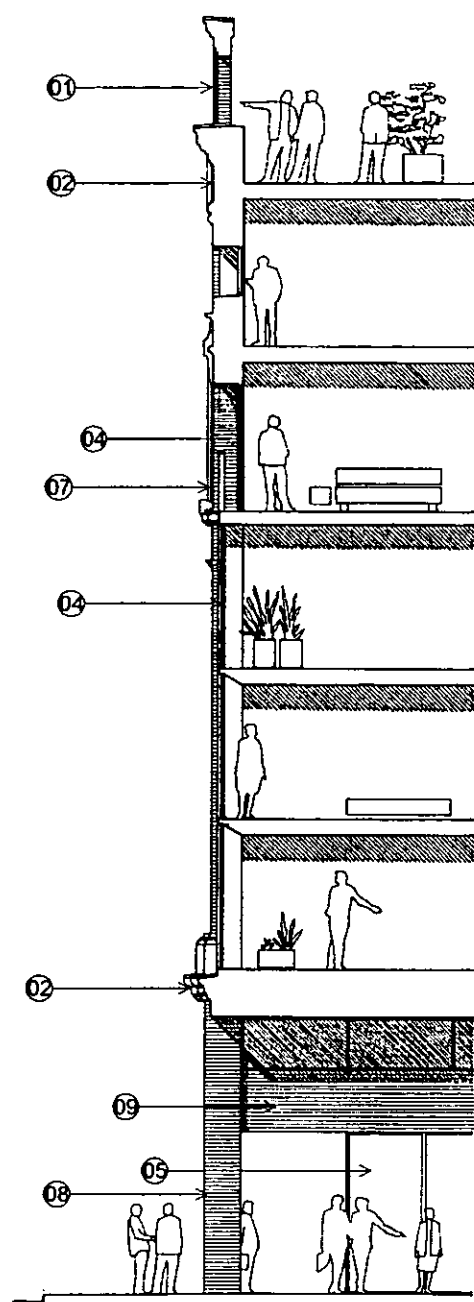
CIRCADIAN Ltd.



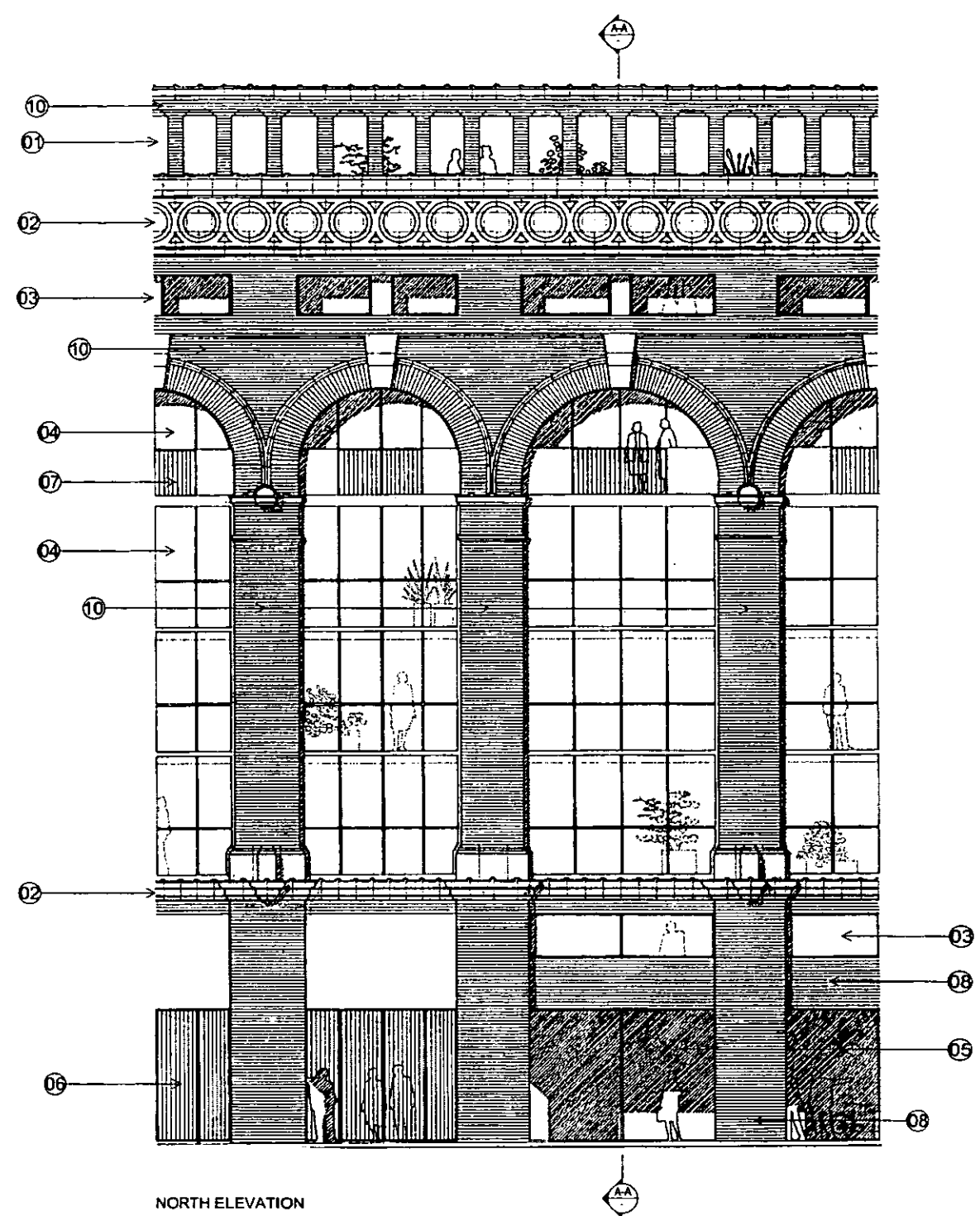
SCALE 1/500 @ A0
LRTW-4/PA/04/008 -A



156



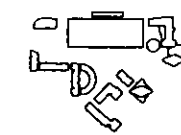
SECTION A-A

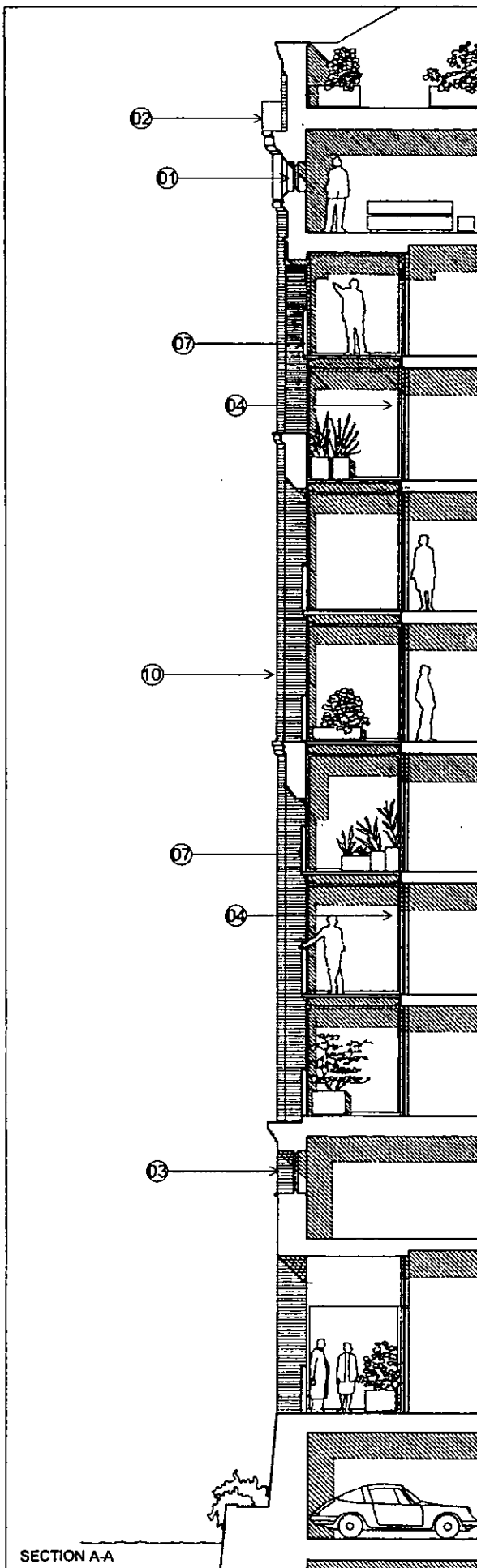


NORTH ELEVATION

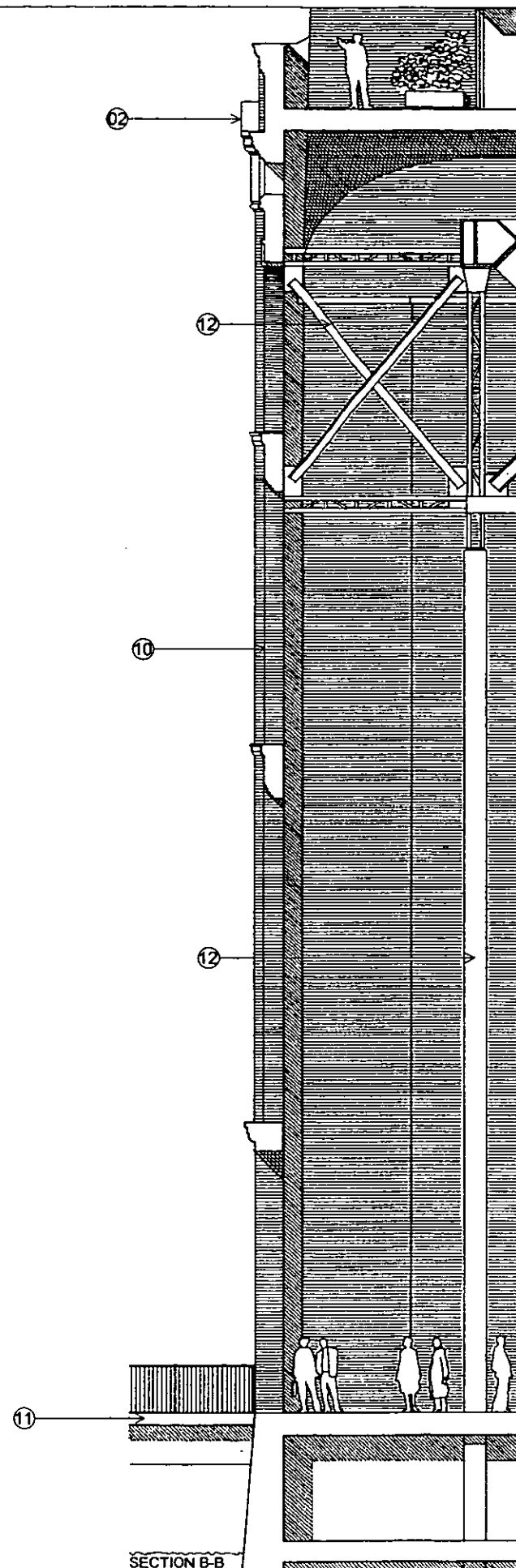
- KEY
- 01 KNOCK OUT BRICKWORK. LINE WITH SUPPORTING PROFILE STRUCTURE.
 - 02 TERRACOTTA FEATURES CLEANED.
 - 03 ADDITIONAL APERTURES IN WALL. ALUMINIUM FRAMED WINDOWS WITH OPENING LIGHTS FOR VENTILATION.
 - 04 ALUMINIUM FRAME CURTAIN WALLING SYSTEM WITH OPENING LIGHTS FOR NATURAL VENTILATION.
 - 05 ALUMINIUM FRAME CURTAIN WALLING SYSTEM WITH SAFETY GLASS.
 - 06 STEEL GATES.
 - 07 STEEL RAILING.
 - 08 RE-BUILT BRICKWORK.
 - 09 NEW BRICKWORK.
 - 10 CLEANED BRICKWORK.

LOTS ROAD POWERSTATION AND LAND AT THAMES AVENUE DEVELOPMENT
POWERSTATION ELEVATION AND SECTION
OCTOBER 2004

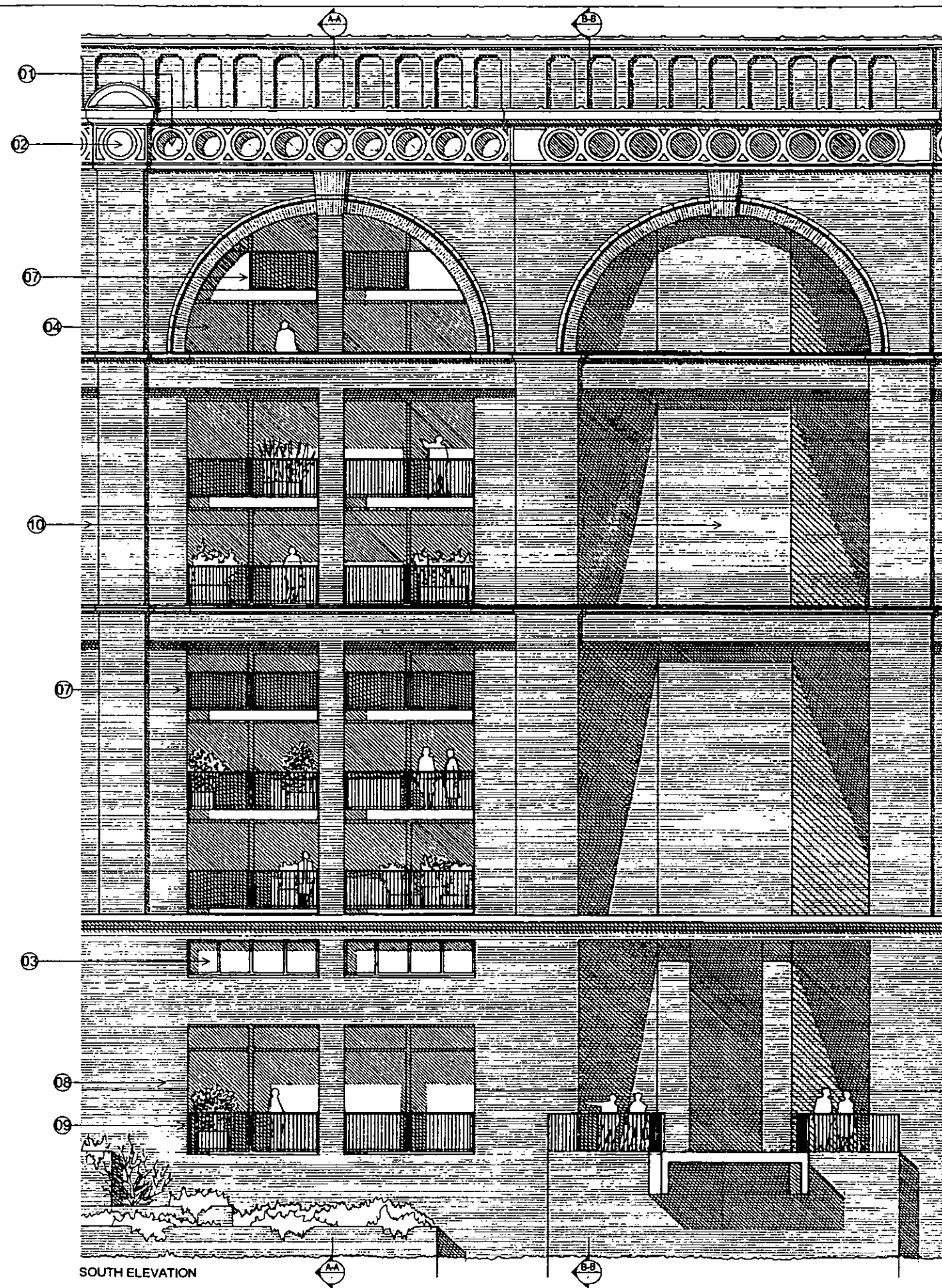




SECTION A-A



SECTION B-B



SOUTH ELEVATION

- KEY
- 01 KNOCK OUT TERRACOTTA. LINE WITH SUPPORTING PROFILE STRUCTURE.
 - 02 TERRACOTTA FEATURES CLEANED.
 - 03 ADDITIONAL APERTURES IN WALL. ALUMINIUM FRAMED WINDOWS WITH OPENING LIGHTS FOR VENTILATION.
 - 04 ALUMINIUM FRAME CURTAIN WALLING SYSTEM WITH OPENING LIGHTS FOR NATURAL VENTILATION.
 - 05 ALUMINIUM FRAME CURTAIN WALLING SYSTEM WITH SAFETY GLASS.
 - 06 STEEL GATES.
 - 07 STEEL RAILING.
 - 08 RE-BUILT BRICKWORK.
 - 09 NEW BRICKWORK.
 - 10 CLEANED BRICKWORK.
 - 11 BRIDGE
 - 12 EXISTING 'HERITAGE' STEELWORK

157

LOTS ROAD POWERSTATION AND LAND AT THAMES AVENUE DEVELOPMENT