

# Embassy Signs Limited

83 BELLENDEN ROAD  
PECKHAM  
LONDON SE15 4QJ

Telephone: 020 7732 1055  
Facsimile: 020 7732 4163

www.embassysigns.co.uk

email@embassysigns.co.uk

DEJ/PNM  
28 July 2006

The Royal Borough of Kensington & Chelsea  
Third Floor  
Town Hall  
Hornton Street  
London W8 7NX

EX DIR	HDC	TP	CAC	AD	CLU	AO AP
R.B. K.C.	04 AUG 2006			PLANNING		
	C	S		ADD	IC	REC
HE				DS		EST

46

For the attention of Hilary Bell -Planning

Dear Hilary

Following your advice, I have recommended to our client that the sign above the main entrance door would be the best option.

Please find enclosed our scale drawing showing our proposals for which I would be obliged to receive your comments prior to us submitting our planning application.

I realise that your department is under pressure, but our client is pushing us to react, as the hotel will be opening shortly.

I look forward to hearing from you.

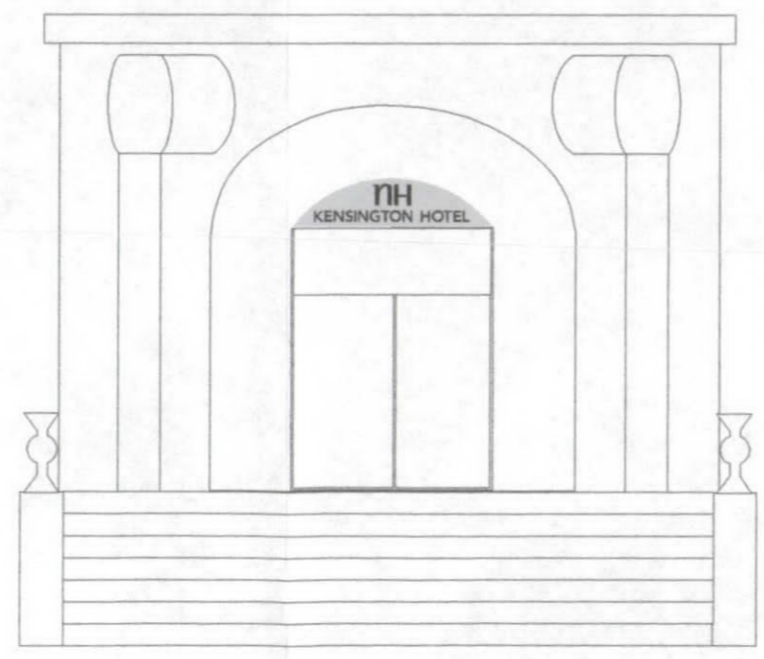
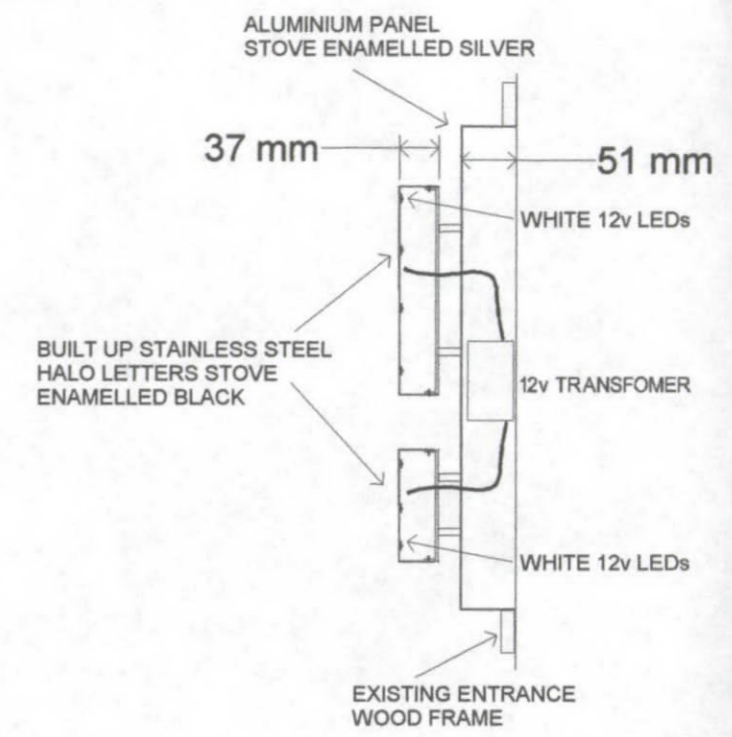
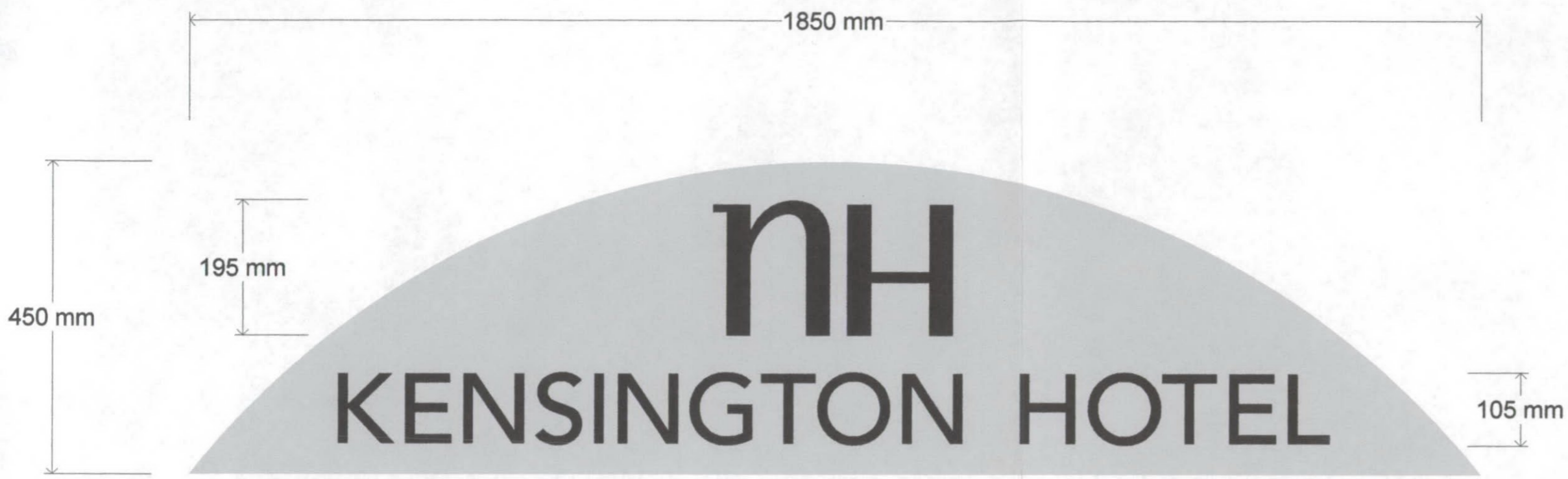
Yours sincerely,

  
David Jones  
Director

7/8/06.

Phoned and advised that only one above door entrance would be considered ok given the works undertaken to restore the facade.

*E. Howard*



EXTERIOR ENTRANCE SIGN CONSISTING OF BUILT UP STAINLESS STEEL LETTERS STOVE ENAMELLED BLACK WITH HALO ILLUMINATION FROM 12v LEDs IN REAR, MOUNTED ON ALUMINIUM BACK PANEL STOVE ENAMELLED SILVER.

EX	HDC	TP	CAC	AD	CLU	AC
DIR						AK
R.B.	04 AUG 2006			PLANNING		
K.C.				APP	IO	REC
N	C	S		ARB	PLN	DES
HBS						FEE

THIS IS A CARRIER SHEET. The EDM Group, Britain's leading document ,management company. For more information call 01902 459 907 or visit [www.theedmgroup.co.uk](http://www.theedmgroup.co.uk)

THIS IS A CARRIER SHEET. The EDM Group, Britain's leading document ,management company. For more information call 01902 459 907 or visit [www.theedmgroup.co.uk](http://www.theedmgroup.co.uk)

THIS IS A CARRIER SHEET. For more information call 01902 459 907 or visit [www.theedmgroup.co.uk](http://www.theedmgroup.co.uk)

THIS IS A CARRIER SHEET. For more information call 01902 459 907 or visit [www.theedmgroup.co.uk](http://www.theedmgroup.co.uk)

THIS IS A CARRIER SHEET. For more information call 01902 459 907 or visit [www.theedmgroup.co.uk](http://www.theedmgroup.co.uk)

THIS IS A CARRIER SHEET. For more information call 01902 459 907 or visit [www.theedmgroup.co.uk](http://www.theedmgroup.co.uk)

THIS IS A CARRIER SHEET. For more information call 01902 459 907 or visit [www.theedmgroup.co.uk](http://www.theedmgroup.co.uk)

THIS IS A CARRIER SHEET. For more information call 01902 459 907 or visit [www.theedmgroup.co.uk](http://www.theedmgroup.co.uk)

THIS IS A CARRIER SHEET. The EDM Group, Britain's leading document ,management company. For more information call 01902 459 907 or visit [www.theedmgroup.co.uk](http://www.theedmgroup.co.uk)

THIS IS A CARRIER SHEET. For more information call 01902 459 907 or visit [www.theedmgroup.co.uk](http://www.theedmgroup.co.uk)

THIS IS A CARRIER SHEET. For more information call 01902 459 907 or visit [www.theedmgroup.co.uk](http://www.theedmgroup.co.uk)

THIS IS A CARRIER SHEET. For more information call 01902 459 907 or visit [www.theedmgroup.co.uk](http://www.theedmgroup.co.uk)

THIS IS A CARRIER SHEET. For more information call 01902 459 907 or visit [www.theedmgroup.co.uk](http://www.theedmgroup.co.uk)

THIS IS A CARRIER SHEET. For more information call 01902 459 907 or visit [www.theedmgroup.co.uk](http://www.theedmgroup.co.uk)

THIS IS A CARRIER SHEET. For more information call 01902 459 907 or visit [www.theedmgroup.co.uk](http://www.theedmgroup.co.uk)

THIS IS A CARRIER SHEET. For more information call 01902 459 907 or visit [www.theedmgroup.co.uk](http://www.theedmgroup.co.uk)

THIS IS A CARRIER SHEET. The EDM Group, Britain's leading document ,management company. For more information call 01902 459 907 or visit [www.theedmgroup.co.uk](http://www.theedmgroup.co.uk)

THIS IS A CARRIER SHEET. The EDM Group, Britain's leading document ,management company. For more information call 01902 459 907 or visit [www.theedmgroup.co.uk](http://www.theedmgroup.co.uk)

THIS IS A CARRIER SHEET. The EDM Group, Britain's leading document ,management company. For more information call 01902 459 907 or visit [www.theedmgroup.co.uk](http://www.theedmgroup.co.uk)

THIS IS A CARRIER SHEET. The EDM Group, Britain's leading document ,management company. For more information call 01902 459 907 or visit [www.theedmgroup.co.uk](http://www.theedmgroup.co.uk)

ment ,management  
[theedmgroup.co.uk](http://www.theedmgroup.co.uk)

ment ,management  
[theedmgroup.co.uk](http://www.theedmgroup.co.uk)

ment ,management  
[theedmgroup.co.uk](http://www.theedmgroup.co.uk)

ment ,management  
[theedmgroup.co.uk](http://www.theedmgroup.co.uk)

ment ,management  
[theedmgroup.co.uk](http://www.theedmgroup.co.uk)

ment ,management  
[theedmgroup.co.uk](http://www.theedmgroup.co.uk)

ment ,management  
[www.theedmgroup.co.uk](http://www.theedmgroup.co.uk)

ment ,management  
[theedmgroup.co.uk](http://www.theedmgroup.co.uk)

ment ,management  
[theedmgroup.co.uk](http://www.theedmgroup.co.uk)

ment ,management  
[theedmgroup.co.uk](http://www.theedmgroup.co.uk)

ment ,management  
[theedmgroup.co.uk](http://www.theedmgroup.co.uk)

ment ,management  
[theedmgroup.co.uk](http://www.theedmgroup.co.uk)

ment ,management  
[theedmgroup.co.uk](http://www.theedmgroup.co.uk)

ment ,management  
[www.theedmgroup.co.uk](http://www.theedmgroup.co.uk)

*Phone call*



*Embassy Signs*  
*Alan Bell*

*Terry - JFK June*

*0208 679 5428*

*#H Kensington Hotel*

*202-220 Cromwell Rd*

*3 news week*

# Embassy Signs Limited

83 BELLENDEN ROAD  
PECKHAM  
LONDON SE15 4QJ

Telephone: 020 7732 1055  
Facsimile: 020 7732 4163

www.embassysigns.co.uk

email@embassysigns.co.uk

DEJ/PNM  
22 June 2006

The Royal Borough of Kensington & Chelsea  
Third Floor  
Town Hall  
Hornton Street  
London W8 7NX

✓ 27/6

EX DIR	HDC	TP	CAC	AD	CLU	AO AK
R.B. K.C.	27 JUN 2006				PLANNING	
N	C	S		APP	IO	REC
HBS			ARB	FPLN	DES.	FRES

⑧

Dear Sirs,

Re: 220, Cromwell Road, London SW5 0SW

I have been requested to supply external signage for the above building that is an hotel.

I believe this building is a listed building and would seek your advice as to what type of sign would be acceptable.

We have been requested to supply a sign using halo illuminated lettering in black on a silver background.

I enclose a photograph of the building entrance for which we have four options.

1. Free standing sign in garden areas both sides of entrance approximately 2500mm high x 800mm wide.
2. Top of entrance above windows.  
Panel approximately 7m x 83cm in silver with black halo illuminated lettering **NH KENSINGTON HOTEL**
3. Balcony railings, panel installed in front of railings  
6m x 60cm panel in silver with black halo illuminated lettering **NH KENSINGTON HOTEL.**
4. Curved door panel in entrance frame 1850mm span x 450mm height in the centre to read.

**NH  
KENSINGTON  
HOTEL**

Your advice would be appreciated.

Yours faithfully,

  
D. E. Jones  
Director



N.H. KENSINGTON HOTEL 2

3

4

1

OLYMPIA

FURNITURE LIMITED

Bedroom & Dining Room

N.H. KENSINGTON HOTEL

202

220