





E/00/5141W











E/02/5225W







E/98/5288 W  
14/15 Chulds P1





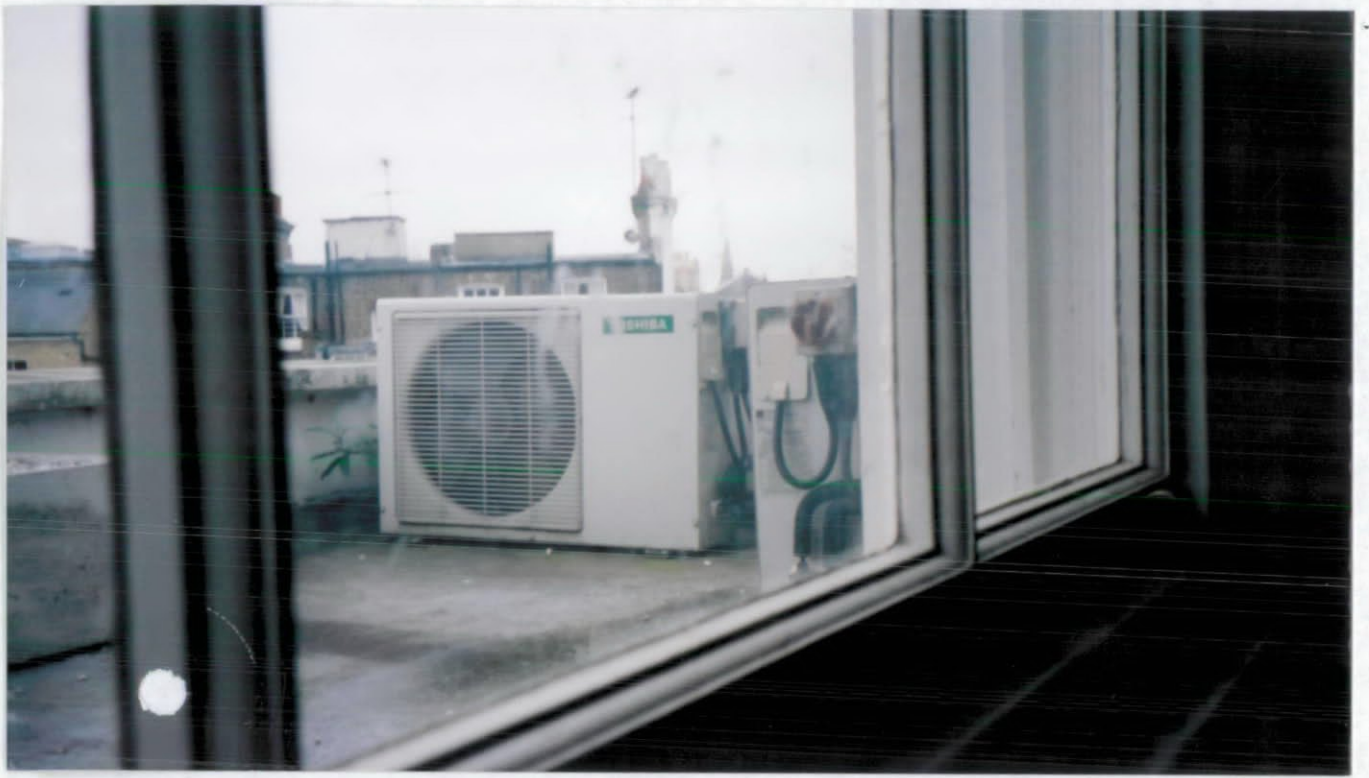


15 The Boltens



E/99/SISIW







15 The Boltens







15 The Baltens











15 The Boltens







15 The Bolton





15 The Boltens







E/005251W  
30 Barlston Gdns









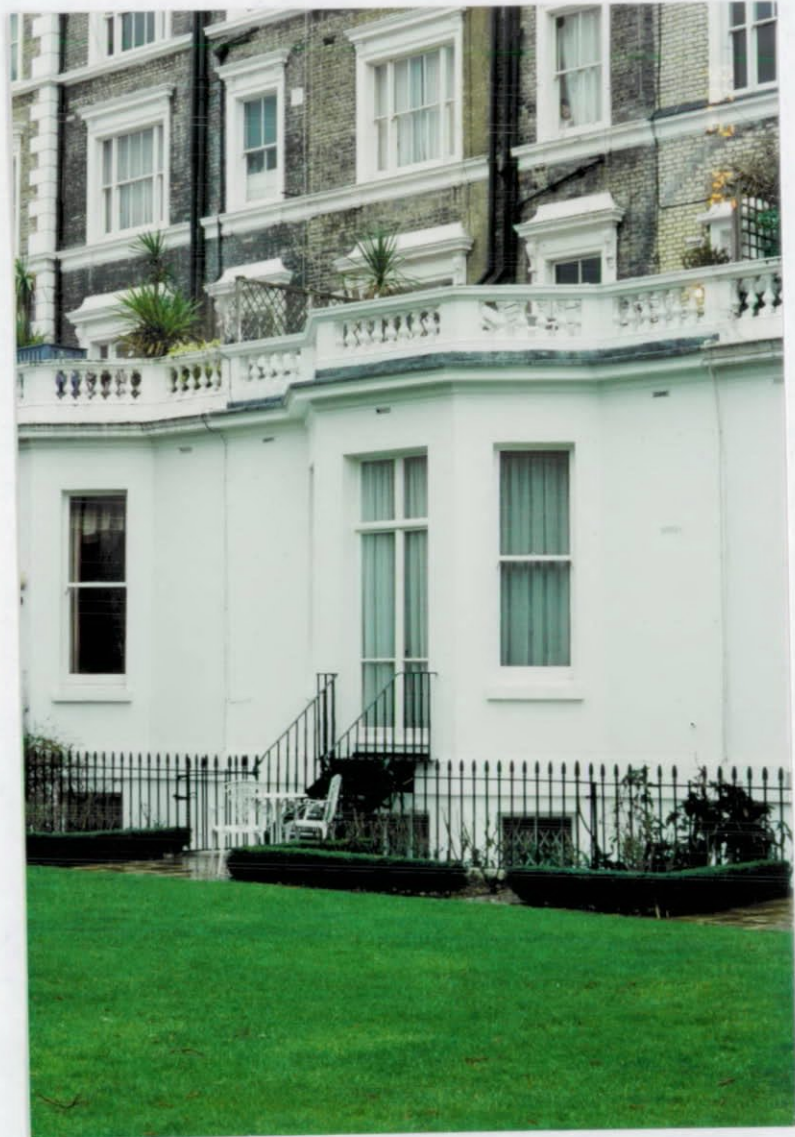






F/00/5227W  
86 Onslow Gardens













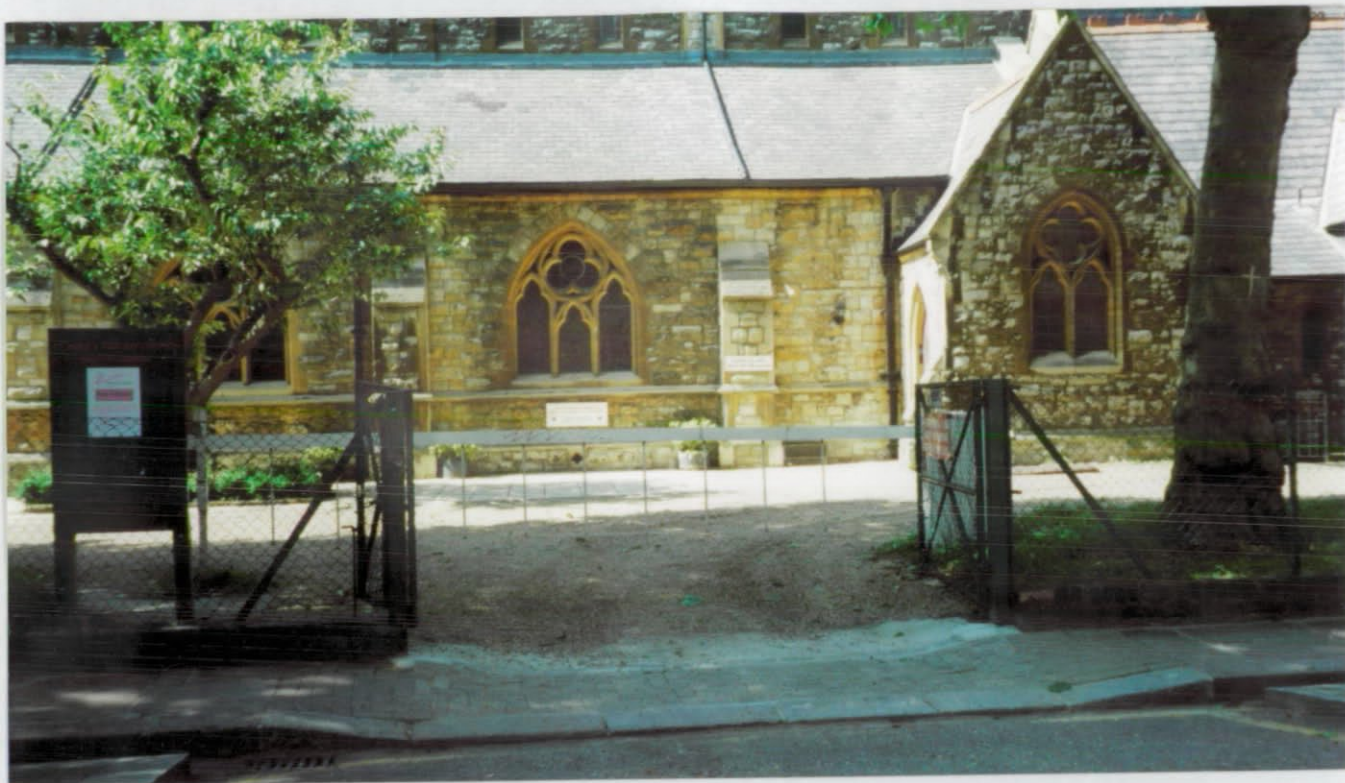




E/00/5146 W

Redcliffe Sq  
St Luke's Church





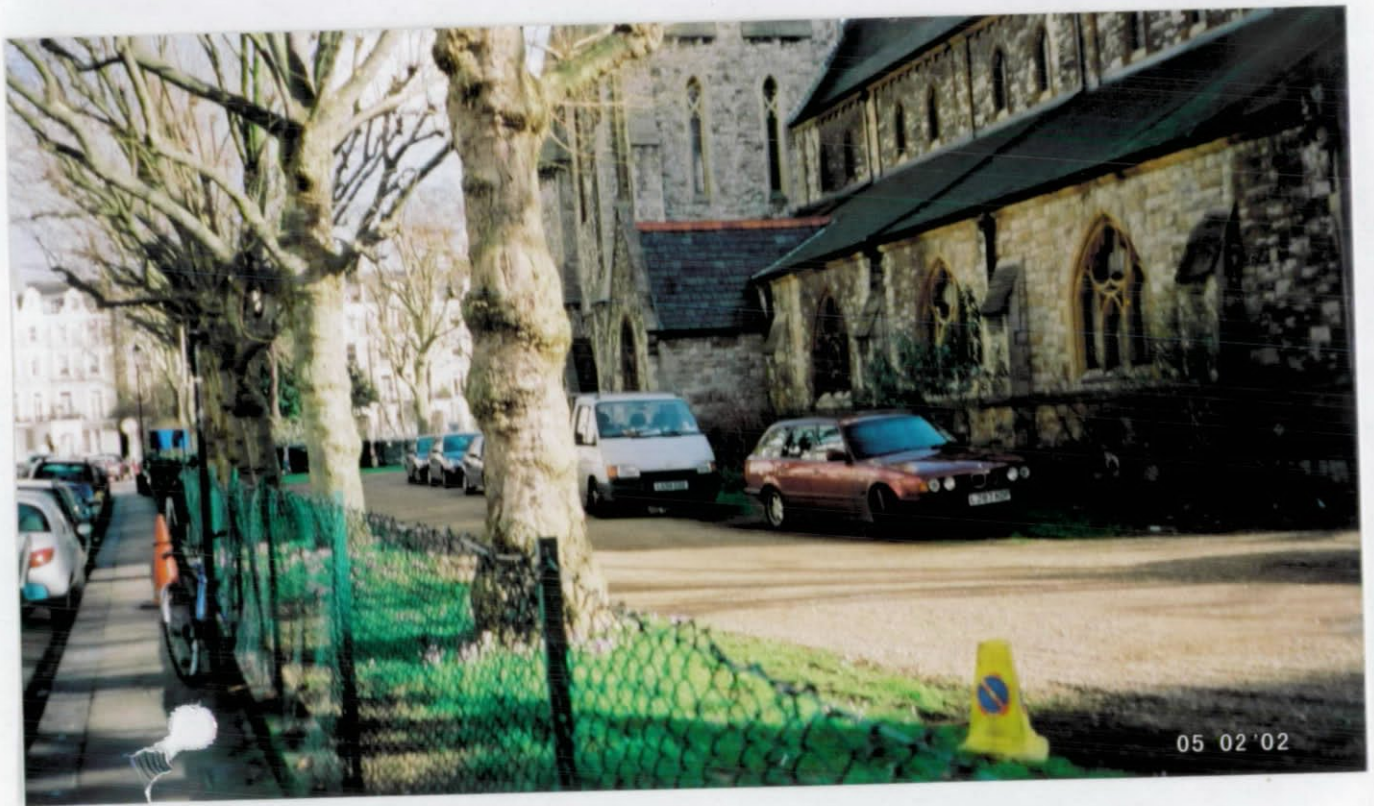
















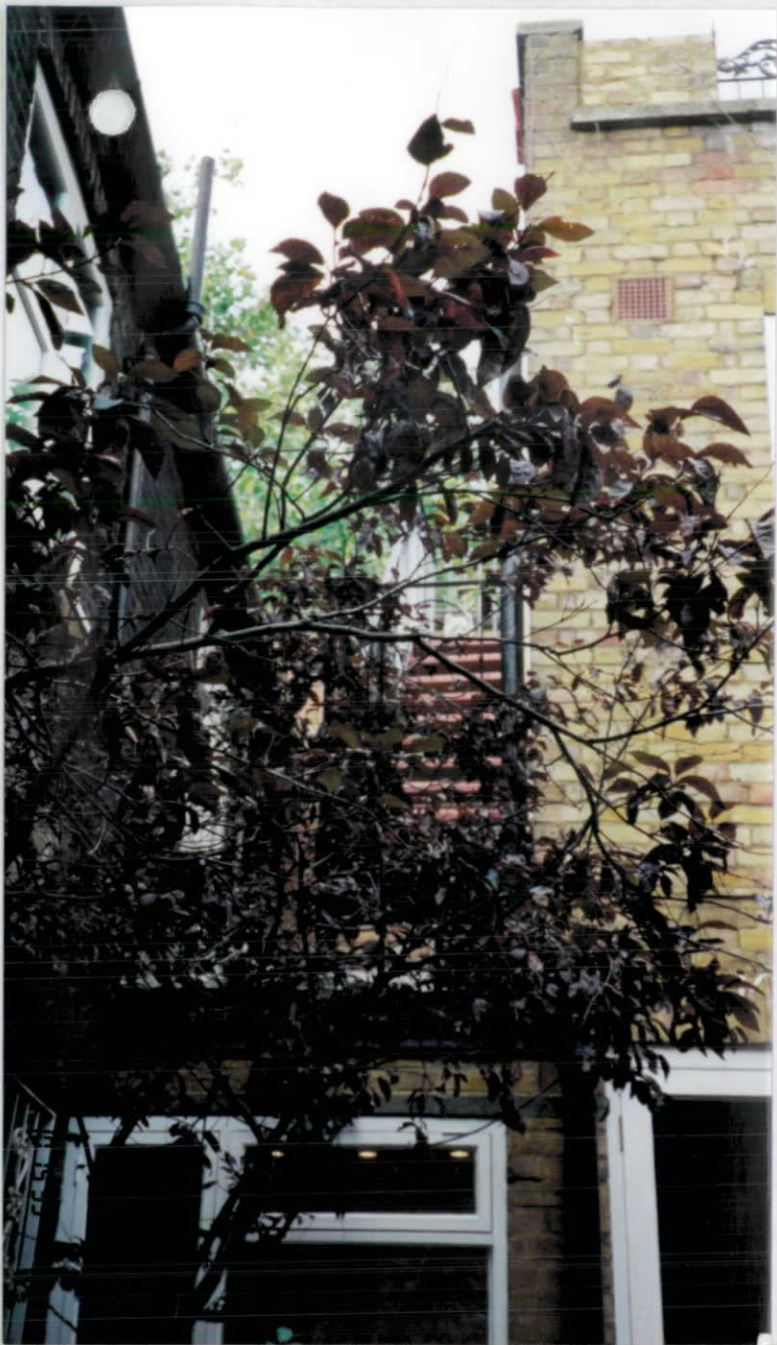


E/99/5204/W

8 Apollo Place











































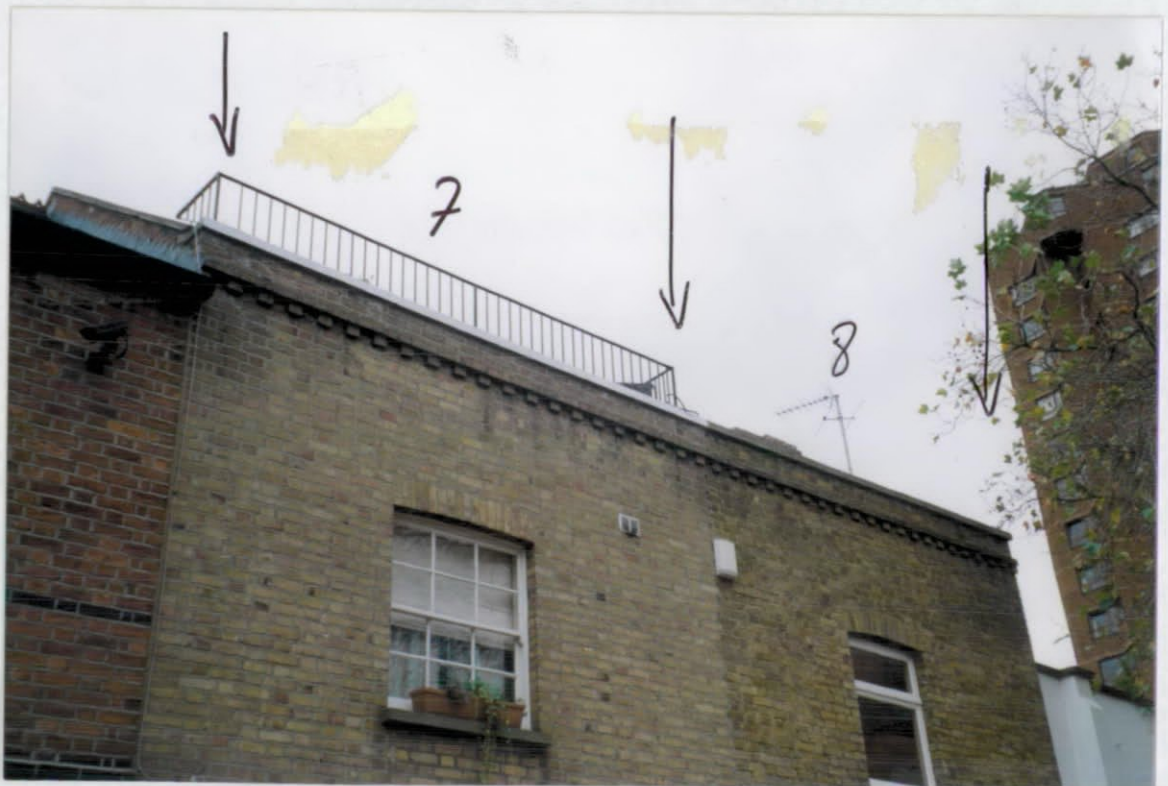










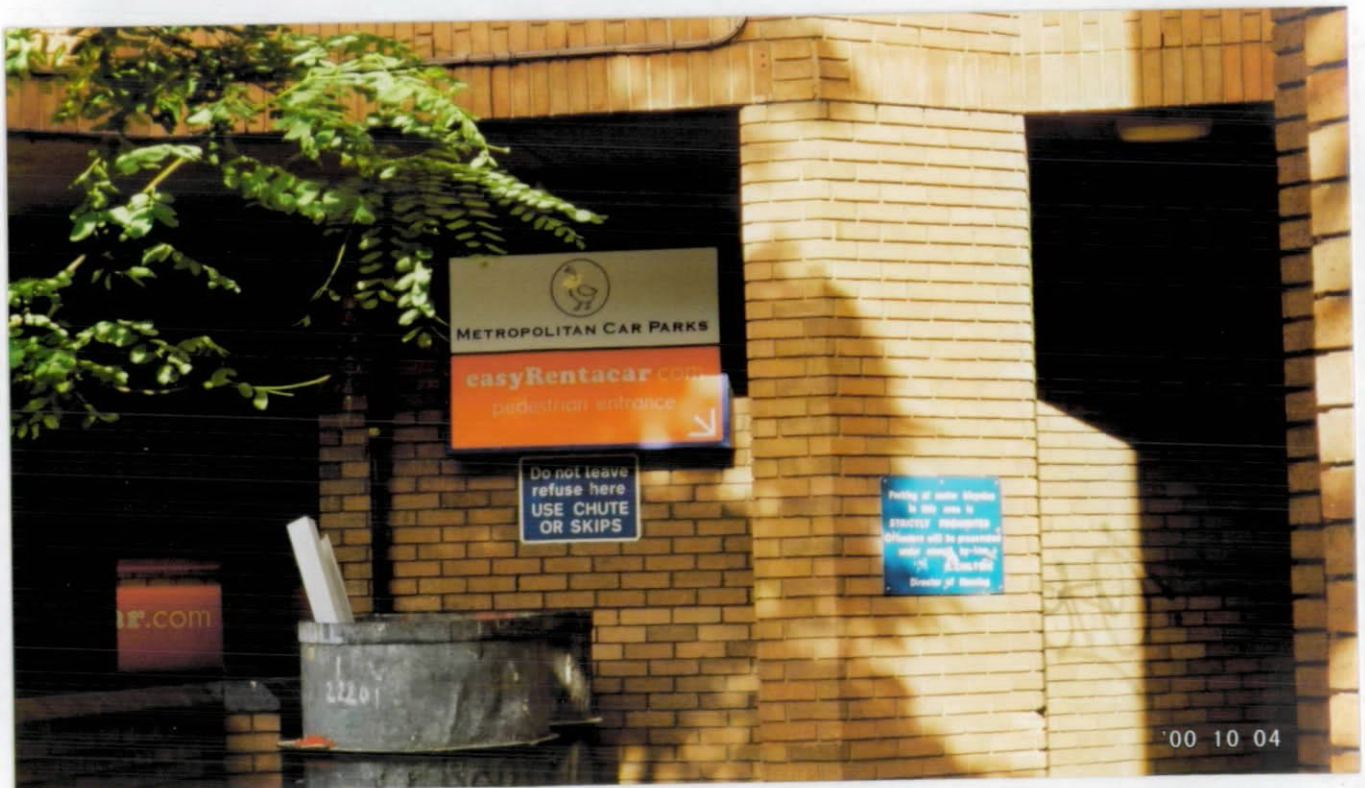






E/09/5259 W

Edith Yard Car Park





E/01/5071 W

**REAR OF 1-3 TREBOVIR ROAD, SW5 IN DECEMBER**  
**1999. WINDOW IN RECESS REMOVED AND AIR**  
**CONDITIONING UNIT INSTALLED**





REAR OF 1-3 TREBOVIR ROAD, SW5 IN MARCH 1994.  
WINDOW IN RECESS NOTED BUT NO AIR  
CONDITIONING UNIT IS INSTALLED





SW

R.B.K. & C.  
TOWN PLANNING  
28 AUG 1997  
RECEIVED

No. 15



TP/97/2254

1. Typical view along Hereford Square.



Hatched area proposed to be renewed to match exty.

R.B. K. & C.  
TOWN PLANNING  
28 AUG 1997  
RECEIVED



2. 15 Hereford Square. Front Elevation, identifying areas where render is to be renewed.

TP/97/2254



R.B.K. & C.  
TOWN PLANNING  
28 AUG 1997  
RECEIVED



3. A typical property in Hereford Square where lead flashings have been used.

TP/97/2254